



MAGNI
TELESCOPIC HANDLERS

HTH

MAGNI: EXPERIENCE, RELIABILITY and VERSATILITY

MAGNI's expertise has been applauded as the industry leader for the development of a specific range of heavy-duty machines: the HTH RANGE.

The technical features of all HTH models have been specifically designed to make these machines the best choice in quarries, mining, oil & gas plants and also the heavy lift industry, thanks to their lifting capacity from 22,046 to 99,200 lbs.

In addition, a specific range of attachments have been developed, giving customers the ability to choose the best solution for their needs.



LIFT CAPACITY
FROM **22,046 lbs** TO
99,200 lbs
BEST LOAD CHARTS AVAILABLE



MAX. LIFTING
HEIGHT
31-46 feet



26,450 lbs (26 feet)
CAPACITY IN LBS
AT MAX. REACH



1.2 / 1.8 feet
GROUND
CLEARANCE ON TIRES



HTH 10.10

HTH 16.10

HTH 20.10

HTH 24.11

HTH 27.11

HTH 30.12



HTH 35.12

HTH 50.14



CABIN



PATENTED DESIGN & FULL-VISIBILITY CAB

The innovative design of the MAGNI cab has been developed to grant maximum comfort and safety for the operator. It is, in fact, certified FOPS/ROPS and is equipped with a protection grid on the top to always ensure safety.

The cabin has full-visibility: the wide windshield from the bottom to the top allows the operator to look at the load even when it is suspended above his head or when the boom is completely lowered. The seat tilts back 15° to optimize operator visibility when delivering materials.

The cabin is also fully enclosed and airtight, pressurized and provided with 100% inlet air filtration. Heating and air conditioning are part of the standard equipment for all models.

The cabin is equipped with a touch screen display for the control of the entire machine. With a movable steering column, which allows the operator to get in and out very easily and achieve a comfortable driving position.

Inside the cabin you will also find a cup holder for both hot and cold beverages.

Also installed as standard in the cabin is a USB socket for charging tablets and smartphones.



100% air filtration



Pressurized cab
FOPS/ROPS



Heating
Air conditioning



Cup holder

MAGNI CONTROL PANEL

The display has been designed to control all the functions of the machines in the most simplistic and intuitive manner. In case an error occurs, the software communicates with the operator with written messages available in 8 different languages.

All the information of the machines is efficiently organized on the display and can be selected with the touch of a finger.

INTEGRATED DIAGNOSTIC PANEL

A complete integrated diagnostic panel is available that, in the case of electronic and software failures, reduces after sales costs, machine downtime and allows remote assistance via the internet.



CONTROL PANEL



STANDARD TOUCH SCREEN

All HTH models are equipped with a 7" touch screen display. The software installed for the management of the whole machine is optimized to collect all usage data and conveys that in 3 pages, neatly arranged. Browsing the pages is extremely easy and intuitive even for new users.



XL TOUCH SCREEN

As an option it is possible to ask for a wider and even more powerful 10" touch screen. The Linux operating system installed on the display makes browsing through pages faster and smoother even in prolonged use.

The larger screen provides an enhanced view of the load charts and an easier selection of icons and buttons during use. It also allows for faster and easier software updates when needed and ensures enhanced operational ease and intuitiveness.

REMOTE CONTROL TYPES

The HTH range can be equipped with two radio remote controls. One will allow the operator to perform all the hydraulic movements of the machine. The more advanced version of the two will allow the operator to drive the machine up to a speed of 3mph from a distance of 100 meters. The joysticks of the radio controls are electro-proportional like those present in the cab: they consistently reproduce the same precision in the execution of the commands.



MCTS

MAGNI COMBI TOUCH SYSTEM

MCTS represents a totally new concept for machine management. It is easy to use for both novice and expert operators thanks to its intuitive style with icons. The system is divided into 3 main pages each dedicated to different functions of the machine. You can easily select each page using the joystick selector, the icons will guide you through your selection. The correct page comes on when a function is performed. This ensures a safe operation by the operator.



1



COMMAND PAGE

The upper part is reserved for the basic controls of the cab (i.e. temperature and ventilation), the central part is dedicated to the lights of the machine, while the lower part is dedicated to the various options available and to switch from the cab control to the radio control.

2



LOADING DIAGRAM PAGE

MAGNI uses the "Load Moment Indicator" system, responding to all crane regulations. The display shows a dynamic load diagram that allows you to see the load center move according to the real movements that the operator performs.

3



CUSTOMIZATION PAGE

This screen allows the operator to set the limitations of the working height and hydraulic speed of the movements: up-down and extension-return of the arm, tilting of the forks and also all the functions of the accessories for dangerous or repetitive maneuvers.

KEY CHARACTERISTICS



BEST LIFTING PERFORMANCE

BEST LIFTING PERFORMANCE



LIFT CAPACITY FROM **22,046 lbs** TO **99,200 lbs**
BEST LOAD CHARTS AVAILABLE



MAX. LIFTING HEIGHT
31-46 feet



CAPACITY IN LBS AT MAX. REACH

HTH 10.10	5,730 lbs	16.5 feet
HTH 16.10	9,260 lbs	16.5 feet
HTH 20.10	12,100 lbs	17.0 feet
HTH 24.11	16,000 lbs	18.5 feet
HTH 27.11	16,530 lbs	21.3 feet
HTH 30.12	17,630 lbs	22.5 feet
HTH 35.12	19,850 lbs	22.5 feet
HTH 50.14	26,450 lbs	26.0 feet



GROUND CLEARANCE



HTH 10.10	14.7 in	HTH 27.11	20.8 in
HTH 16.10	17.3 in	HTH 30.12	21.5 in
HTH 20.10	15.74 in	HTH 35.12	21.5 in
HTH 24.11	17.0 in	HTH 50.14	27.2 in

PERFORMANCE ON TYRES

LEVELING SYSTEM ON TIRES

The leveling system on the tires is standard for all HTH models. This makes it possible to adapt to any uneven ground while working providing a safer environment to the operator.

This system is particularly useful during procedures involving heavy material handling with forks and container lifting.

FROM +/-5° TO +/-10°



0°



FROM +/-5° TO +/-10°



OFF-ROAD

This feature is particularly important when working operations have to take place on unstable ground conditions, such as in mines and quarries, or when you have heavy loads to increase adherence on the ground. The 4WD

provides optimal traction on difficult terrains (e.g. sand, mud or pebbles). Also, the high ground clearance makes this machines highly suitable and safe for uneven grounds.



GRADEABILITY

The machine provide excellent safety while working on slopes or very steep terrains. All HTH are proved to also work easily on gradeability from 34° to 58°.

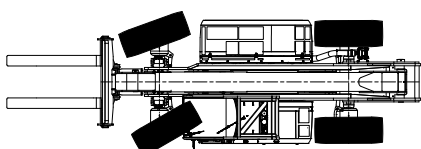
DRAWBAR PULL

From 88 kN to 390 kN.

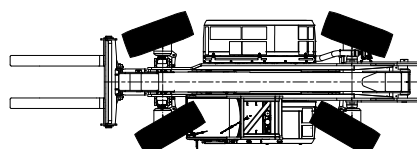
3 TYPES OF STEERING

The possibility to choose the best movement according to the working space is a fundamental feature. On all HTH machines it is possible to choose the steering type that best suits your tasks:

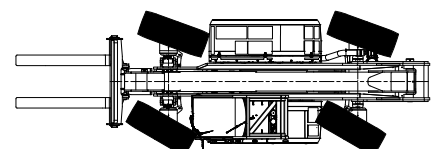
- **Front:** best choice for on-road driving or even ground
- **All wheel:** offers an improved turning radius for moving in tight spaces
- **Crab:** offers the ability to approach from the side



Front



All wheel



Crab



HTH30.12

TECHNICAL SPECIFICATIONS

TRANSMISSION

On each model the transmission has been optimized to provide the best possible performance.

The **HTH 30.12** and **HTH 35.12** are equipped with a transmission that is a heavy duty automatic shift box type power shift with 3 speeds electronically synchronized. It is a 2WD transmission with automatic engagement of 4WD in case of slippery conditions.

For **HTH 24.11** and **HTH 27.11**, the transmission is hydrostatic and electronically controlled with a central self-locking differential, to prevent slips and problem with adherence to the ground.

For **HTH 10.10**, **HTH 16.10** and **HTH 20.10** the transmission is hydrostatic and electronically controlled made of a variable displacement pump for an accurate handling of the load.

HTH 30.12 - HTH 35.12



HTH 24.11 - HTH 27.11



HTH 10.10 - HTH 16.10 -
HTH 20.10



ENGINE

Each model is matched with an engine that provides optimal lifting and driving performance. From Deutz 100 kW, for the small HTH 10.10, to Mercedes 260 kW, for the biggest models HTH 50.14, HTH 35.12 and HTH 30.12.

The engine compartment is designed for easy access to facilitate inspection and maintenance.

AXLES

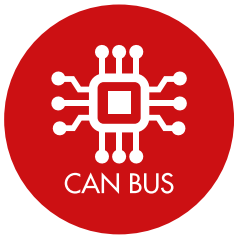
The machines are equipped with heavy duty axles with a hydraulic servo-assisted multidisc brake in an oil bath, with heavy duty 4 stage epicyclic reduction.





HYDRAULIC CIRCUIT

The hydraulic circuit is Load Sensing with 350 bars of working pressure. It is composed by a 11s high precision pump, two electro proportional joysticks and a SIL 2 main valve. The system responds to the European regulation EN13489 regarding the electrical controls. The electronic management of the hydraulic circuit automatically selects the best engine rpm to provide the best performance. This results in a reduction in fuel consumption on long working cycles. With the Magni software it is possible to manage the flow sharing, therefore ensuring safety and precision while performing up to 4 hydraulic movements simultaneously.



ELECTRIC CIRCUIT

The electric circuit is IP67 and is protected from infiltrations of water and dust. The circuit is 24V and CAN BUS: this means that the system can easily collect all details of electric and electronic components. All the data is then organized on the screen in the cab and can be viewed neatly by the operator. CAN BUS technology requires 1/3 less cables, this reduces the risk of failure on the circuit and increases the reliability of the machine.



TECHNICAL SPECIFICATIONS

BOOM

Made of high resistance steel, the boom is extremely durable and rigid, but at the same time is very light, increasing the load capacity and avoiding the deflection on the outreach. The hydraulic hoses are completely inserted inside the boom, to protect them from any breakdown due to accidental collision.

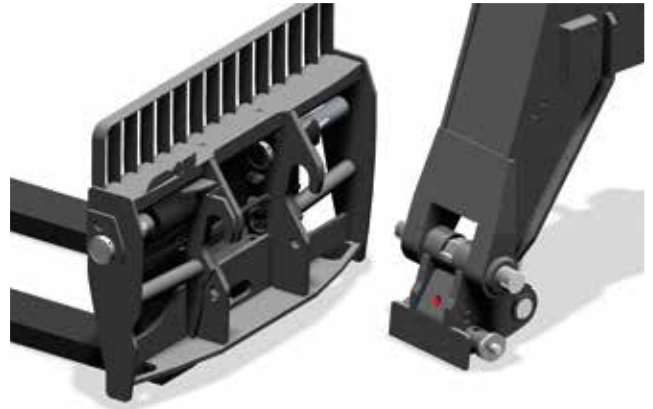
The 3-block-hoses, 3 + 3, prevents friction between them, contributing to a drastic reduction of damages. The sliding guides are fixed on steel blocks, which are secured to the arm to avoid breaks in case of excessive rubbing.





AUTOMATIC ATTACHMENT RECOGNITION

The automatic attachment recognition system - RFID - is available on every model of the HTH range. The attachment, once mounted on the machine, is automatically recognized by the machine and automatically shows up on the touch screen displaying the correct load diagram and prepares the load limitation system. The Q-fit, thanks to its low weight, improves lifting performance. This system on HTH models is much safer and prevents the risk of choosing a wrong attachment.



TECHNICAL SPECIFICATIONS

LOAD MOMENT INDICATOR (LMI)

All MAGNI telehandlers are equipped with a load limiting system that automatically loads the diagrams for each attachment and continuously analyzes the position of the load in space in each operation. The touch screen display in the cab dynamically shows the position of the load according to the operator movements.

If an overload occurs, the system interrupts the movement immediately, allowing only the retraction and lowering of the boom.



A



Potentiometer for angle and length of boom detection with redundant safety.

B



Detection of load weight through 4 pressure transducers: 2 placed on lifting cylinders and 2 on compensation cylinder.

C



Flashing beacon.

D



Dynamic representation of all the collected data on the touch screen for the operator.





A

C

B

D

MAGNI

HTH35.12

M

	HTH 10.10	HTH 16.10	HTH 20.10	HTH 24.11
LIFT CAPACITY	22,046 lbs at 1.96 ft load center	35,273 lbs at 1.96 ft load center	44,090 at 600 mm load center	52,910 lbs at 2.95 ft load center
MAXIMUM LIFTING HEIGHT	31.2 ft	31.1 ft	32.0 ft	34.6 ft
MAXIMUM REACH	16.5 ft	16.5 ft	17.0 ft	18.5 ft
CAB	FOPS-ROPS tested hermetic cab with protectors	FOPS-ROPS tested hermetic cab with protectors	FOPS-ROPS tested hermetic cab with protectors	FOPS-ROPS tested hermetic cab with protectors
	Front, rear and upper wiper	Front, rear and upper wiper	Front, rear and upper wiper	Front, rear and upper wiper
	Headlights for road circulation, flashing beacon	Headlights for road circulation, flashing beacon	Headlights for road circulation, flashing beacon	Headlights for road circulation, flashing beacon
	Rear view mirrors	Rear view mirrors	Rear view mirrors	Rear view mirrors
	Heating - Air conditioning	Heating - Air conditioning	Heating - Air conditioning	Heating - Air conditioning
CONTROLS	Multi-function electro proportional joystick	Multi-function electro proportional joystick	Multi-function electro proportional joystick	Multi-function electro proportional joystick
BRAKE SYSTEM	Hydraulic servo-assisted multidisc brake in oil bath on both axles, with double circuit	Hydraulic servo-assisted multidisc brake in oil bath on both axles, with double circuit	Hydraulic servo-assisted multidisc brake in oil bath on both axles, with double circuit	Hydraulic servo-assisted multidisc brake in oil bath on both axles, with double circuit
	Negative parking brake	Negative parking brake	Negative parking brake	Negative parking brake
ENGINE	Deutz TCD 3.6 L4 - Stage IV	Mercedes OM 934 LA Stage IV	Mercedes OM 934 LA Stage IV	Mercedes OM 934 LA Stage IV
	Turbo intercooler	Turbo intercooler	Turbo intercooler	Turbo intercooler
	4 cylinders / 3.600 cm ³	4 cylinders / 5.130 cm ³	4 cylinders / 5.130 cm ³	4 cylinders / 5.130 cm ³
	Power 100 kW - 136 HP	Power 129 kW - 175 HP	Power 129 kW - 175 HP	Power 150 kW - 204 HP
	Max rpm = 2,300	Max rpm = 2,200	Max rpm = 2,200	Max rpm = 2,200
	Max torque 500 Nm at 1.400 rpm	Max torque 750 Nm at 1.200-1.600 rpm	Max torque 750 Nm at 1.200-1.600 rpm	Max torque 800 Nm at 1.200-1.600 rpm
	Electronic injection (single pump for each injector) Diesel turbo	Electronic injection (single pump for each injector) Diesel turbo	Electronic injection (single pump for each injector) Diesel turbo	Electronic injection (single pump for each injector) Diesel turbo
Liquid cooling system	Liquid cooling system	Liquid cooling system	Liquid cooling system	
AXLES	Heavy Duty with epicyclic reduction	Heavy Duty with 2-stage epicyclic reduction	Heavy Duty with 2-stage epicyclic reduction	Heavy Duty with 4-stage epicyclic reduction
	One steering cylinder each axle	One steering cylinder each axle	One steering cylinder each axle	One steering cylinder each axle
	Leveling correction front axle at + 8° on the right and + 8° on the left	Leveling correction front axle at + 8° on the right and + 8° on the left	Leveling correction front axle at + 8° on the right and + 8° on the left	Leveling correction front axle at + 5° on the right and + 5° on the left
	3 types of steering: - Front steering - All Wheel steering - Crab steering	3 types of steering: - Front steering - All Wheel steering - Crab steering	3 types of steering: - Front steering - All Wheel steering - Crab steering	3 types of steering: - Front steering - All Wheel steering - Crab steering
	Tilting rear axle	Tilting rear axle	Tilting rear axle	Tilting rear axle
PERFORMANCE	Max. travel speed: 25 Mph	Max. travel speed: 15 Mph	Max. travel speed: 15 Mph	Max. travel speed: 15 Mph
	Drawbar pull: 88 kN	Drawbar pull: 180 kN	Drawbar pull: 180 kN	Drawbar pull: 180 kN
	Gradeability: 35%	Gradeability: 34%	Gradeability: 34%	Gradeability: 34%
	Turning radius (end wheels): 15.5 ft	Turning radius (end wheels): 17.71 ft	Turning radius (end wheels): 17.71 ft	Turning radius (end wheels): 17.71 ft
WEIGHTS	Total unladen: 30,645 lbs	Total unladen: 45,195 lbs	Total unladen: 52,911 lbs	Total unladen: 65,477 lbs
	Front axle unladen (boom retracted and lowered): 13,890 lbs	Front axle unladen (boom retracted and lowered): 19,840 lbs	Front axle unladen (boom retracted and lowered): 17,637 lbs	Front axle unladen (boom retracted and lowered): 20,282 lbs
	Rear axle unladen (boom retracted and lowered): 16,755 lbs	Rear axle unladen (boom retracted and lowered): 25,355 lbs	Rear axle unladen (boom retracted and lowered): 35,274 lbs	Rear axle unladen (boom retracted and lowered): 45,195 lbs
TRANSMISSION	Rexroth hydrostatics	Rexroth hydrostatics	Rexroth hydrostatics	Rexroth hydrostatics
	Variable displacement hydrostatic pump with electronic control	Variable displacement hydrostatic pump with electronic control	Variable displacement hydrostatic pump with electronic control	Variable displacement hydrostatic pump with electronic control
	One variable displacement hydrostatic motor	One variable displacement hydrostatic motor	One variable displacement hydrostatic motor	One variable displacement hydrostatic motor
HYDRAULIC CIRCUIT	Hydraulic gearbox with 2 speeds forward / reverse	Hydraulic gearbox with 2 speeds forward / reverse. Differential hydraulic locking	Hydraulic gearbox with 2 speeds forward / reverse. Differential hydraulic locking	Hydraulic gearbox with 2 speeds forward / reverse. Differential hydraulic locking
	Load sensing piston pump	Load sensing piston pump	Load sensing piston pump	Load sensing piston pump
	Circuit at 350 bar	Circuit at 350 bar	Circuit at 350 bar	Circuit at 350 bar
	Rexroth Proportional hydraulic distributor	Rexroth Proportional hydraulic distributor	Rexroth Proportional hydraulic distributor	Rexroth Proportional hydraulic distributor
	Suction and return line filters	Suction and return line filters	Suction and return line filters	Suction and return line filters
TANKS CAPACITIES	High pressure flexible hoses	High pressure flexible hoses	High pressure flexible hoses	High pressure flexible hoses
	Engine oil = 2 US gal	Engine oil = 5.4 US gal	Engine oil = 5.4 US gal	Engine oil = 5.4 US gal
	Ad Blue = 2.7 US gal	Ad Blue = 10.5 US gal	Ad Blue = 10.5 US gal	Ad Blue = 10.5 US gal
	Cooling liquid = 6.5 US gal	Cooling liquid = 6.5 US gal	Cooling liquid = 6.5 US gal	Cooling liquid = 6.5 US gal
	Hydraulic oil tank = 55.5 US gal	Hydraulic oil tank = 55.5 US gal	Hydraulic oil tank = 55.5 US gal	Hydraulic oil tank = 55.5 US gal
TIRE DIMENSIONS	Fuel tank = 53 US gal	Fuel tank = 53 US gal	Fuel tank = 53 US gal	Fuel tank = 53 US gal
	18 - R22,5 ** two each axle, driving and steering	16 - R25 ** two each axle, driving and steering	16 - R25 ** two each axle, driving and steering	18 - R25 ** two each axle, driving and steering
SAFETY	Electronic safety system which controls the load with definition of the lifted load, radius and comparison with the diagrams stored.	Electronic safety system which controls the load with definition of the lifted load, radius and comparison with the diagrams stored.	Electronic safety system which controls the load with definition of the lifted load, radius and comparison with the diagrams stored.	Electronic safety system which controls the load with definition of the lifted load, radius and comparison with the diagrams stored.
	Block of aggravating movements of the load.	Block of aggravating movements of the load.	Block of aggravating movements of the load.	Block of aggravating movements of the load.
	Safety valves on cylinders	Safety valves on cylinders	Safety valves on cylinders	Safety valves on cylinders

HTH 27.11	HTH 30.12	HTH 35.12	HTH 50.14
59,524 lbs at 3.93 ft load center	66,138 lbs at 3.93 ft load center	77,161 lbs at 3.93 ft load center	99,208 lbs at 3.93 ft load center
35.5 ft	38.5 ft	38.5 ft	46.0 ft
21.3 ft	22.5 ft	22.5 ft	26.0 ft
FOPS-ROPS tested hermetic cab with protectors	FOPS-ROPS tested hermetic cab with protectors	FOPS-ROPS tested hermetic cab with protectors	FOPS-ROPS tested hermetic cab with protectors
Front, rear and upper wiper	Front, rear and upper wiper	Front, rear and upper wiper	Front, rear and upper wiper
Headlights for road circulation, flashing beacon	Headlights for road circulation, flashing beacon	Headlights for road circulation, flashing beacon	Headlights for road circulation, flashing beacon
Rear view mirrors	Rear view mirrors	Rear view mirrors	Rear view mirrors
Heating - Air conditioning	Heating - Air conditioning	Heating - Air conditioning	Heating - Air conditioning
Multi-function electro proportional joystick	Multi-function electro proportional joystick	Multi-function electro proportional joystick	Multi-function electro proportional joystick
Hydraulic servo-assisted multidisc brake in oil bath on both axles, with double circuit	Hydraulic servo-assisted multidisc brake in oil bath on both axles, with double circuit	Hydraulic servo-assisted multidisc brake in oil bath on both axles, with double circuit	Hydraulic servo-assisted multidisc brake in oil bath on both axles, with double circuit
Negative parking brake	Negative parking brake	Negative parking brake	Negative parking brake
Mercedes OM 934 LA Stage IV	Mercedes OM 936 LA Stage IV	Mercedes OM 936 LA Stage IV	Mercedes OM 936 LA Stage IV
Turbo intercooler	Turbo intercooler	Turbo intercooler	Turbo intercooler
4 cylinders / 5.130 cm ³	6 cylinders / 7.700 cm ³	6 cylinders / 7.700 cm ³	6 cylinders / 7.700 cm ³
Power 150 kW - 204 HP	Power 260 kW - 350 HP	Power 260 kW - 350 HP	Power 260 kW - 350 HP
Max rpm = 2,200	Max rpm = 2,200	Max rpm = 2,200	Max rpm = 2,200
Max torque 800 Nm at 1.200-1.600 rpm	Max torque 1.400 Nm at 1.200 rpm	Max torque 1.400 Nm at 1.200 rpm	Max torque 1.400 Nm at 1.200 rpm
Electronic injection (single pump for each injector) Diesel turbo	Electronic injection (single pump for each injector) Diesel turbo	Electronic injection (single pump for each injector) Diesel turbo	Electronic injection (single pump for each injector) Diesel turbo
Liquid cooling system	Liquid cooling system	Liquid cooling system	Liquid cooling system
Heavy Duty with 2-stage epicyclic reduction	Heavy Duty with 2-stage epicyclic reduction	Heavy Duty with 2-stage epicyclic reduction	Heavy Duty with 2-stage epicyclic reduction
One steering cylinder each axle	Two steering cylinders each axle	Two steering cylinders each axle	Two steering cylinders each axle
Leveling correction front axle at + 5° on the right and + 5° on the left	Leveling correction front axle at + 5° on the right and + 5° on the left	Leveling correction front axle at + 5° on the right and + 5° on the left	Leveling correction front axle at + 5° on the right and + 5° on the left
3 types of steering: - Front steering - All Wheel steering - Crab steering	3 types of steering: - Front steering - All Wheel steering - Crab steering	3 types of steering: - Front steering - All Wheel steering - Crab steering	3 types of steering: - Front steering - All Wheel steering - Crab steering
Tilting rear axle	Tilting rear axle	Tilting rear axle	Tilting rear axle
Max. travel speed: 15 Mph	Max. travel speed: 15 Mph	Max. travel speed: 15 Mph	Max. travel speed: 13 Mph
Drawbar pull: 180 kN	Drawbar pull: 365 kN	Drawbar pull: 365 kN	Drawbar pull: 390 kN
Gradeability: 30%	Gradeability: 58%	Gradeability: 50%	Gradeability: 50%
Turning radius (end wheels): 26.98 ft	Turning radius (end wheels): 26.21 ft	Turning radius (end wheels): 26.21 ft	Turning radius (end wheels): 31.49 ft
Total unladen: 78,265 lbs	Total unladen: 90,170 lbs	Total unladen: 99,208 lbs	Total unladen: 143,300 lbs
Front axle unladen (boom retracted and lowered): 28,000 lbs	Front axle unladen (boom retracted and lowered): 41,225 lbs	Front axle unladen (boom retracted and lowered): 41,668 lbs	Front axle unladen (boom retracted and lowered): 61,729 lbs
Rear axle unladen (boom retracted and lowered): 50,265 lbs	Rear axle unladen (boom retracted and lowered): 48,945 lbs	Rear axle unladen (boom retracted and lowered): 57,540 lbs	Rear axle unladen (boom retracted and lowered): 88,185 lbs
Rexroth hydrostatics	Rexroth hydrostatics	Rexroth hydrostatics	Rexroth hydrostatics
Variable displacement hydrostatic pump with electronic control	Variable displacement hydrostatic pump with electronic control	Variable displacement hydrostatic pump with electronic control	Variable displacement hydrostatic pump with electronic control
One variable displacement hydrostatic motor	One variable displacement hydrostatic motor	One variable displacement hydrostatic motor	One variable displacement hydrostatic motor
Hydraulic gearbox with 2 speeds forward / reverse. Differential hydraulic locking	Hydraulic gearbox with 3 speeds forward / reverse. Differential hydraulic locking	Hydraulic gearbox with 3 speeds forward / reverse. Differential hydraulic locking	Hydraulic gearbox with 3 speeds forward / reverse. Differential hydraulic locking
Load sensing piston pump	Load sensing piston pump	Load sensing piston pump	Load sensing piston pump
Circuit at 350 bar	Circuit at 350 bar	Circuit at 350 bar	Circuit at 350 bar
Rexroth Proportional hydraulic distributor	Rexroth Proportional hydraulic distributor	Rexroth Proportional hydraulic distributor	Rexroth Proportional hydraulic distributor
Suction and return line filters	Suction and return line filters	Suction and return line filters	Suction and return line filters
High pressure flexible hoses	High pressure flexible hoses	High pressure flexible hoses	High pressure flexible hoses
Engine oil = 5.4 US gal	Engine oil = 7.7 US gal	Engine oil = 7.7 US gal	Engine oil = N.D.
Ad Blue = 10.5 US gal	Ad Blue = 10.5 US gal	Ad Blue = 10.5 US gal	Ad Blue = N.D.
Cooling liquid = 6.5 US gal	Cooling liquid = 6.5 US gal	Cooling liquid = 6.5 US gal	Cooling liquid = N.D.
Hydraulic oil tank = 79.5 US gal	Hydraulic oil tank = 79.5 US gal	Hydraulic oil tank = 79.5 US gal	Hydraulic oil tank = N.D.
Fuel tank = 79.5 US gal	Fuel tank = 79.5 US gal	Fuel tank = 79.5 US gal	Fuel tank = N.D.
26,5 - R25 ** two each axle, driving and steering	29,5 - R25 ** two each axle, driving and steering 24.00-35**optional	29,5 - R25 ** two each axle, driving and steering	29,5 - R25 ** two each axle, driving and steering
Electronic safety system which controls the load with definition of the lifted load, radius and comparison with the diagrams stored.	Electronic safety system which controls the load with definition of the lifted load, radius and comparison with the diagrams stored.	Electronic safety system which controls the load with definition of the lifted load, radius and comparison with the diagrams stored.	Electronic safety system which controls the load with definition of the lifted load, radius and comparison with the diagrams stored.
Block of aggravating movements of the load.	Block of aggravating movements of the load.	Block of aggravating movements of the load.	Block of aggravating movements of the load.
Safety valves on cylinders	Safety valves on cylinders	Safety valves on cylinders	Safety valves on cylinders

ATTACHMENTS

The full potential of Magni machines is achieved by choosing the right attachment among all the possible options given.

All attachments are interchangeable which means that one machine can perform multiple tasks.

**FORKS
STANDARD**



**FORKS WITH
POSITIONER**



**FORKS WITH POSITIONER
AND SIDE SHIFT**



WINCHES



HOOK



ELEVATED HOOK



BUCKET



MINING & QUARRIES SPECIAL ATTACHMENTS

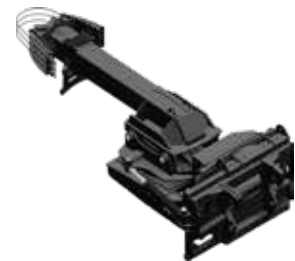
WHEEL HUB HANDLER



CYLINDER CLAMP



**HUB WITH SUSPENSION
CYLINDER HANDLER**



**CONVEYOR BELTS
HANDLER**



TIRES CLAMP



TIRES CLAMP



COILS HANDLER





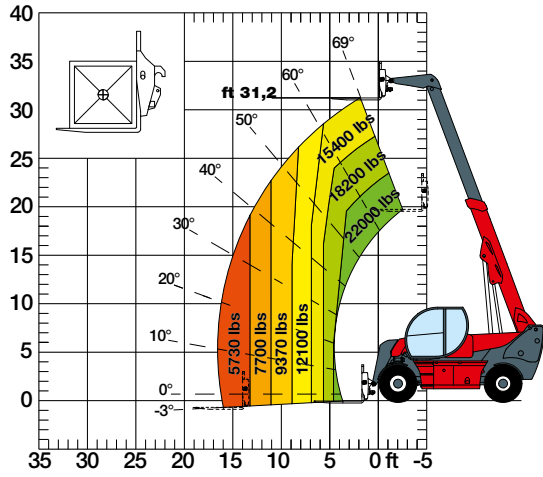
MAGNI

HTH 2511

MAGNI

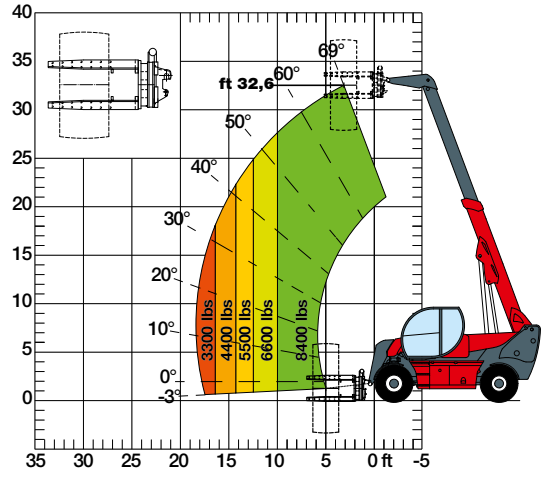
HTH 10.10

LOAD CHART WITH FORKS



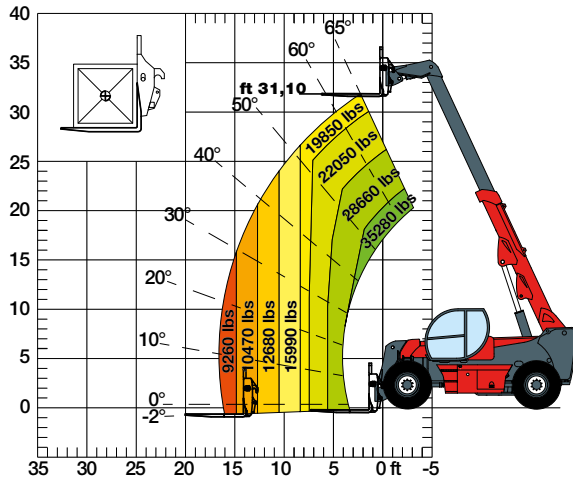
LOAD CHART WITH TIRE CLAMP
MODEL TC3,8-49

HTH 10.10



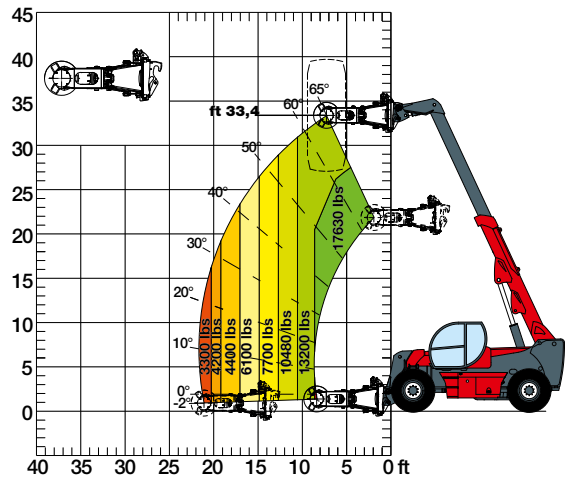
LOAD CHART WITH FORKS

HTH 16.10



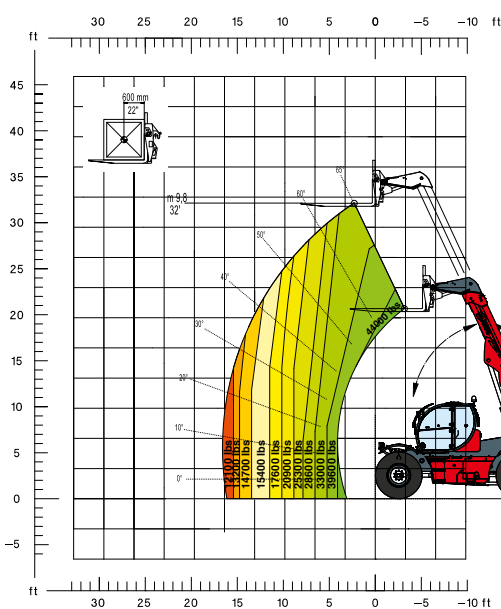
LOAD CHART WITH TIRE CLAMP
MODEL TC 08.63

HTH 16.10



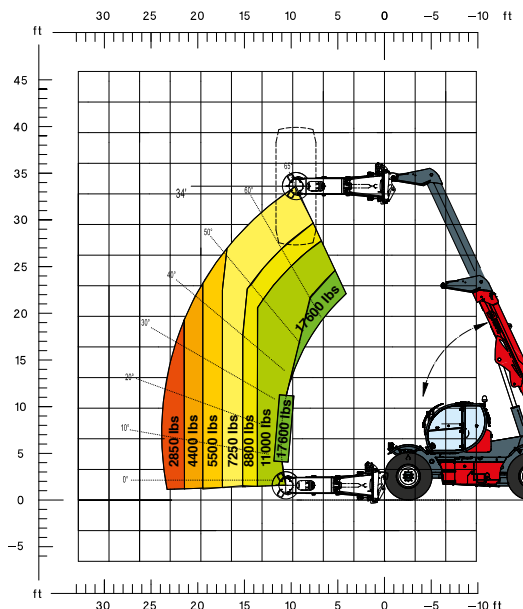
LOAD CHART WITH FORKS

HTH 20.10



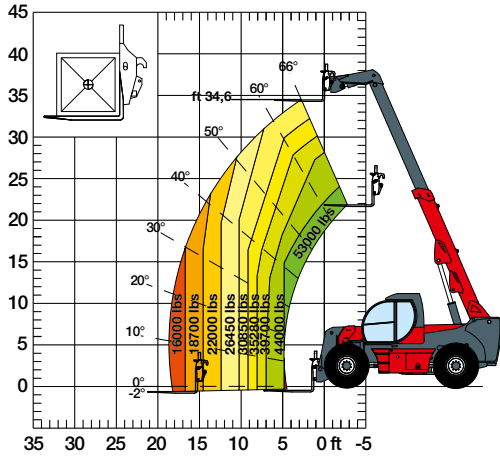
LOAD CHART WITH TIRE CLAMP
MODEL TC 08.63

HTH 20.10



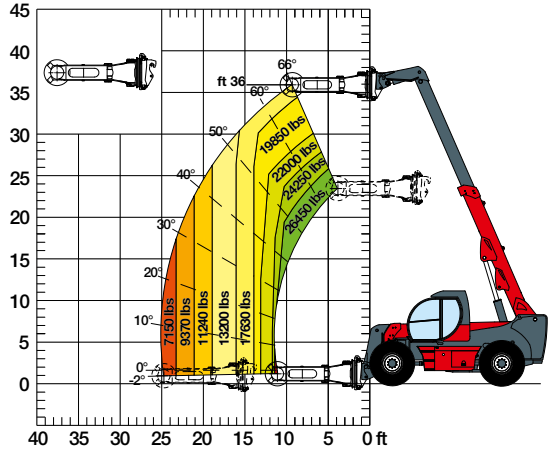
HTH 24.11

LOAD CHART WITH FORKS

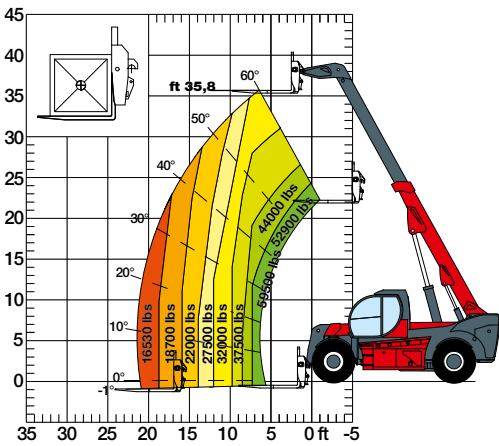


HTH 24.11

LOAD CHART WITH TIRE CLAMP MODEL TC 16.63

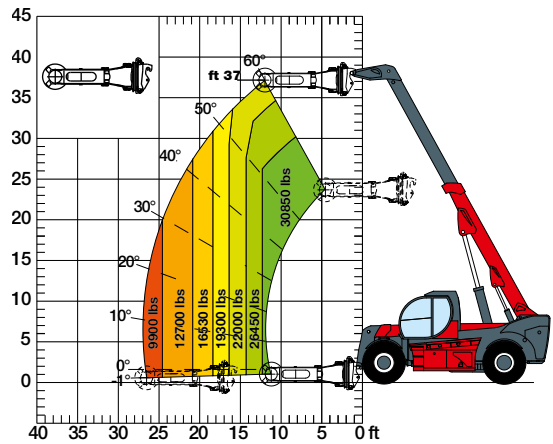


LOAD CHART WITH FORKS



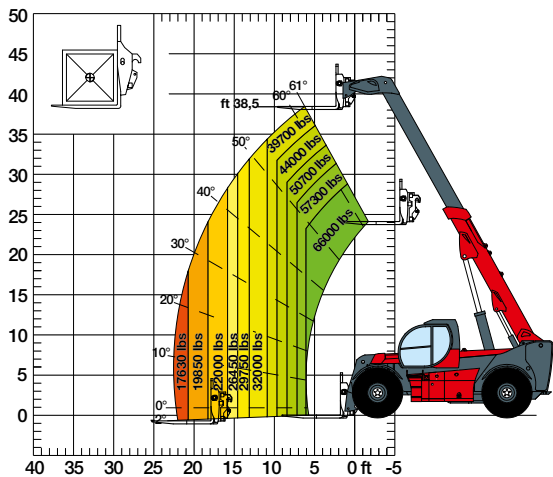
HTH 27.11

LOAD CHART WITH TIRE CLAMP MODEL TC 16.63



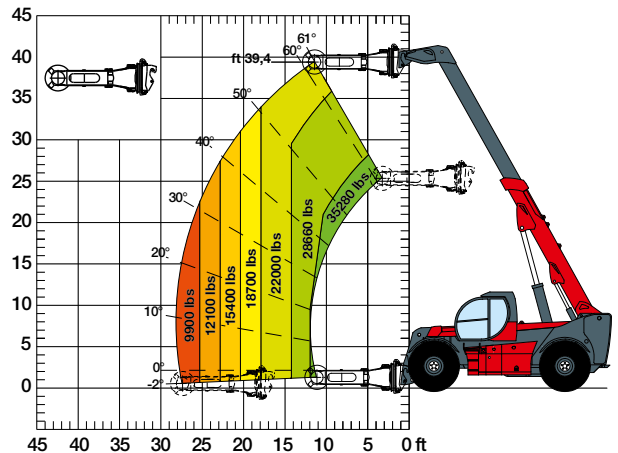
HTH 27.11

LOAD CHART WITH FORKS



HTH 30.12

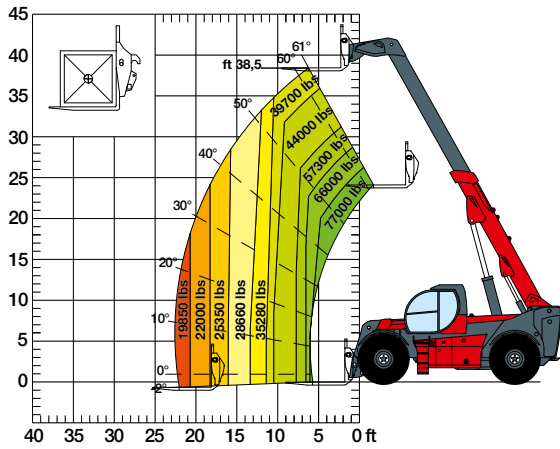
LOAD CHART WITH TIRE CLAMP MODEL TC 16.63



HTH 30.12

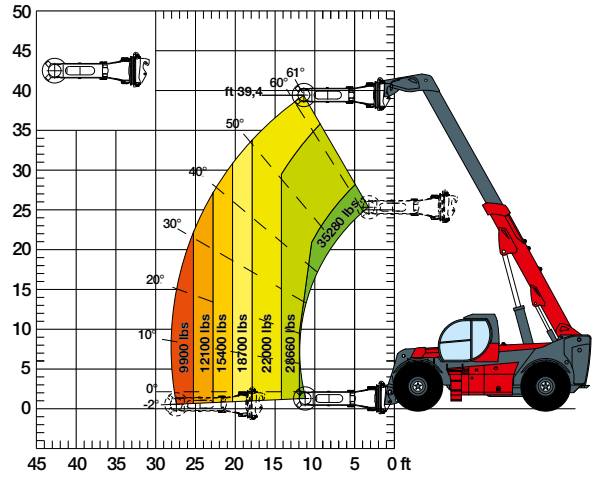
LOAD CHART WITH FORKS

HTH 35.12



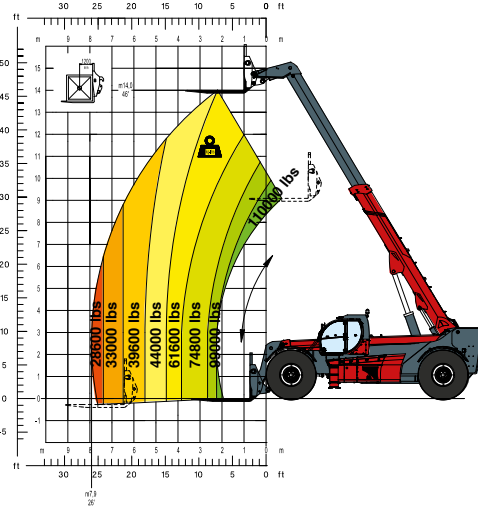
LOAD CHART WITH TIRE CLAMP MODEL TC 16.63

HTH 35.12



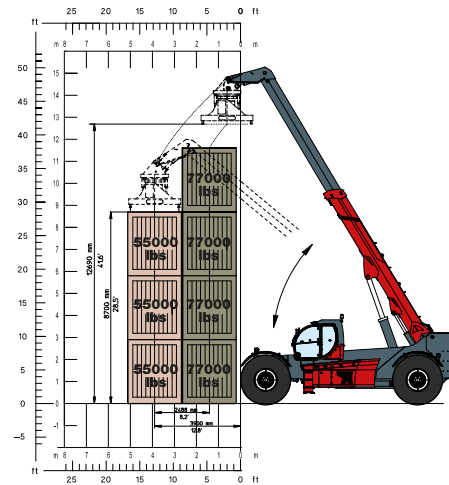
LOAD CHART WITH FORKS

HTH 50.14

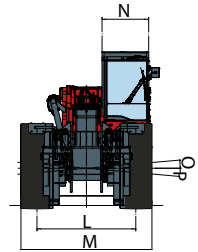
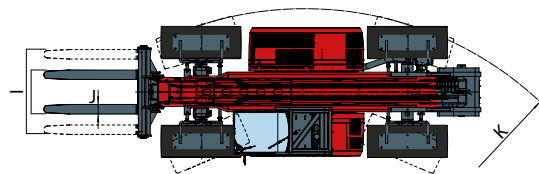
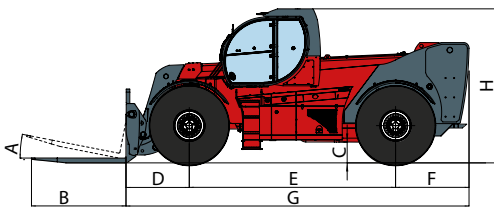


LOAD CHART WITH CONTAINER SPREADER 20"-40"

HTH 50.14



DIMENSIONS



HTH	10.10	16.10	20.10	24.11	27.11	30.12	35.12	50.14
A	14°	12°	12°	12°	11°	11°	11°	11°
B (in)	59.1"	59"	59.05"	70.9"	94.4"	94.4"	94.4"	95.0"
C (in)	14.7"	17.3"	15.74"	17"	20.8"	21.5"	21.5"	27.2"
D (in)	39.3"	45.3"	33.7"	50"	52.7"	56.7"	56.7"	73.0"
E (in)	129.9"	157.5"	157.5"	157.5"	177.1"	188.9"	188.9"	272.0"
F (in)	53.9"	48.4"	50.19"	65"	67.3"	67.3"	67.3"	67.0"
G (in)	222.8"	251.2"	241.37"	272.5"	297.2"	312.9"	312.9"	412.0"
H (in)	117.7"	122"	124.13"	118.1"	138.5"	141.7"	141.7"	150.0"
I (in)	Max 68.5" Min 32.28"	Max 78.74" Min 45.66"	max 79.0" min 45.66"	Max 78.34" Min 49.21"	Max 94.48" Min 56.29"	Max 78.34" Min 53.52"	Max 79.92" Min 55.11"	on request
J (in)	7.87"	7.87"	7.87"	9.84"	11.81"	11.81"	12.60"	on request
K (in)	161.4"	199.2"	225.55"	209.5"	335.4"	382.2"	382.2"	378.0"
L (in)	81.5"	79.5"	80.70"	94.5"	87.8"	88.5"	88.5"	116.5"
M (in)	100.4"	100.4"	100.4"	116.6"	117.1"	118.1"	118.1"	145.6"
N (in)	40.16"	40.16"	42.71"	40.16"	40.16"	40.16"	40.16"	40.5"
O	8°	8°	5°	10°	5°	5°	5°	5°
P	8°	8°	5°	10°	5°	5°	5°	5°



M



HEADQUARTERS

Magni Telescopic Handlers Srl

Via Magellano 22, 41013 Castelfranco Emilia (Modena), Italy
Tel. +39 059 8630811- Fax +39 059 8638012
commerciale@magnith.com

Magni Americas, LLC

616 West 1st Avenue, Roselle, NJ 07203
Toll Free +1 844-2ROTATE - Fax +1 908-634-1000
sales@magniamerica.com

Magni Americas, INC

9154 Woodend Rd Ste H Edwardsville, KS 66111
Tel. +1 816-604-9574
masales@magnith.com

www.magnith.com