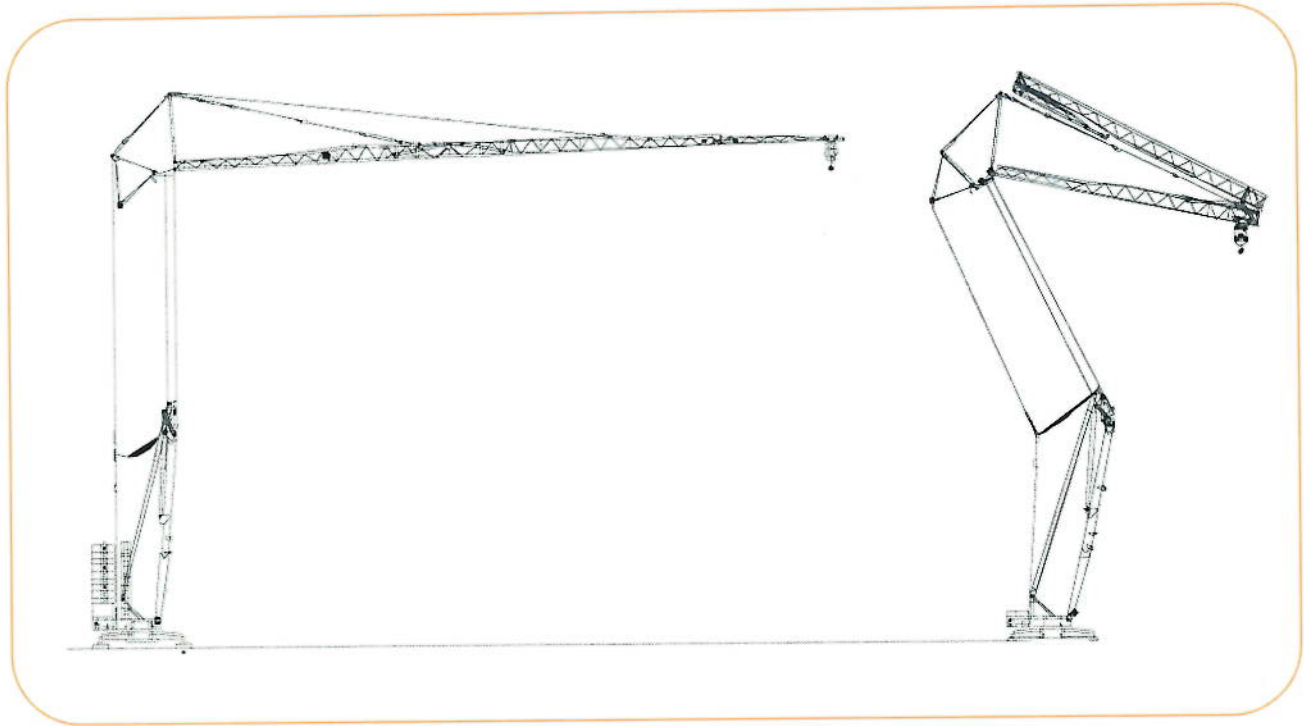




## Fast Self-Erecting Cranes



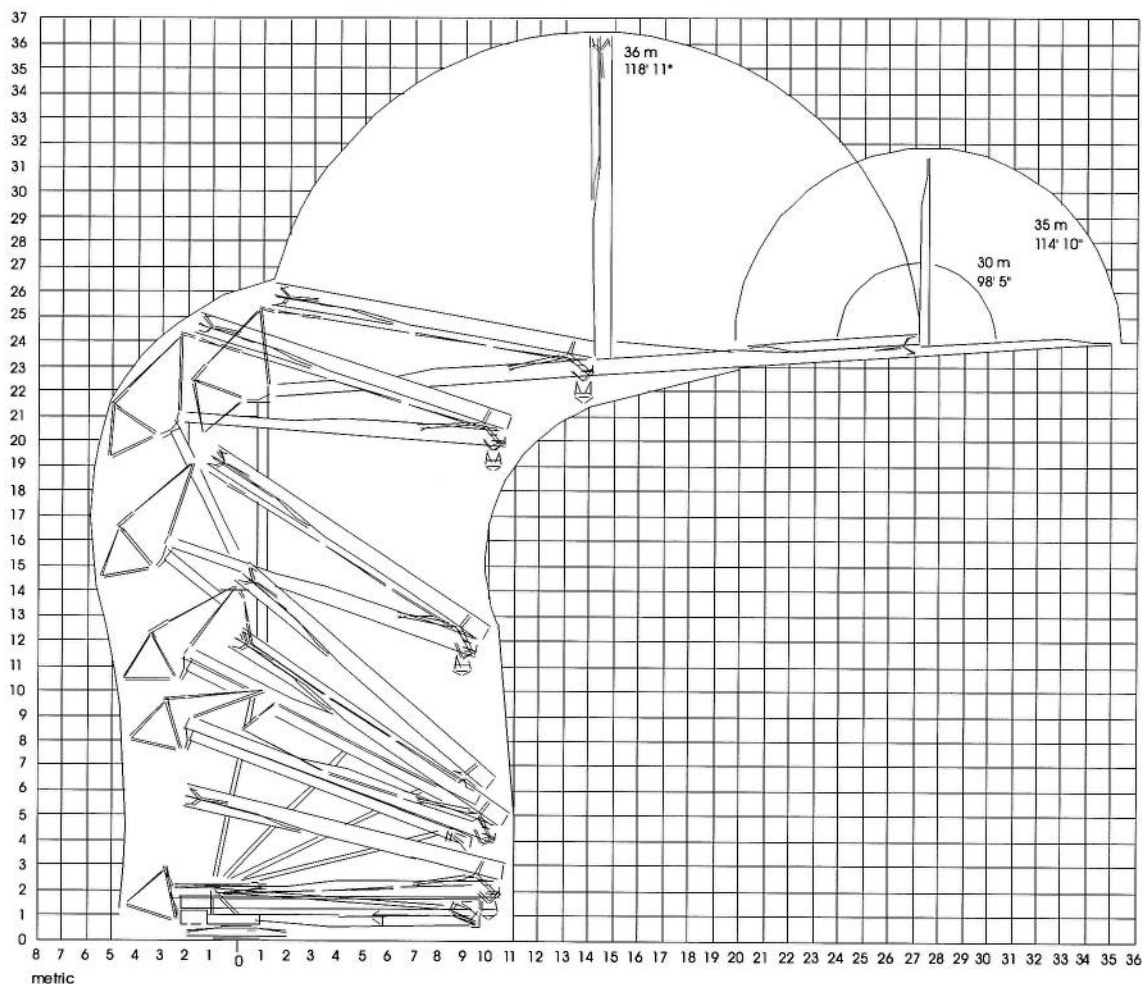
- Self-erect cranes have been designed to facilitate the ease and timeliness of transport, mobilization and operation.
- Alternate installations include rail travel or stationary positioning.
- Luffing jib position is a standard option and changeable at any time.
- Automatic frequency shift radio remote controls are standard.
- Designed with safety, convenience and cost control as priorities.
- Available with an acoustic sensitive electrical generator.

MANUFACTURED IN CONFORMITY WITH INTERNATIONAL STANDARDS BY

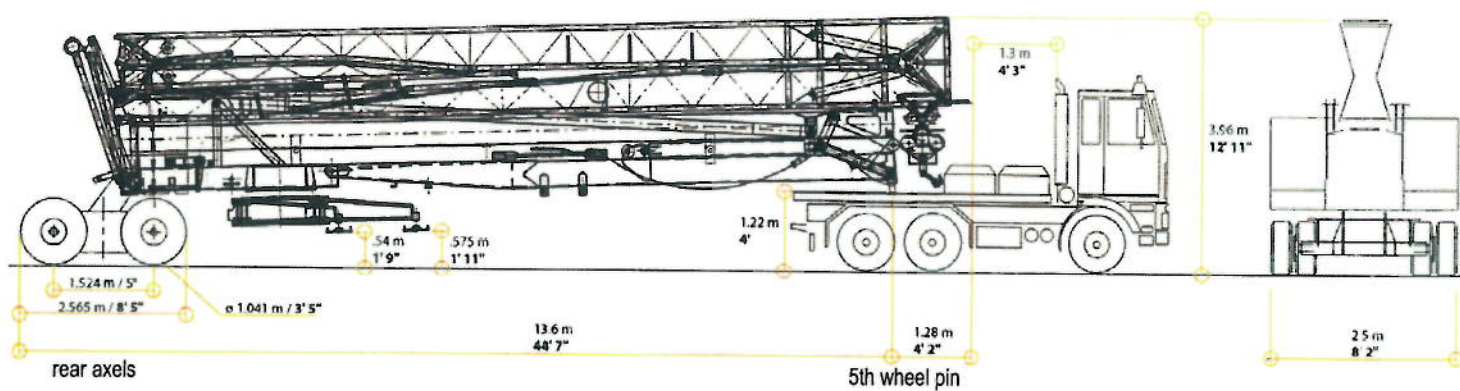




## Erection

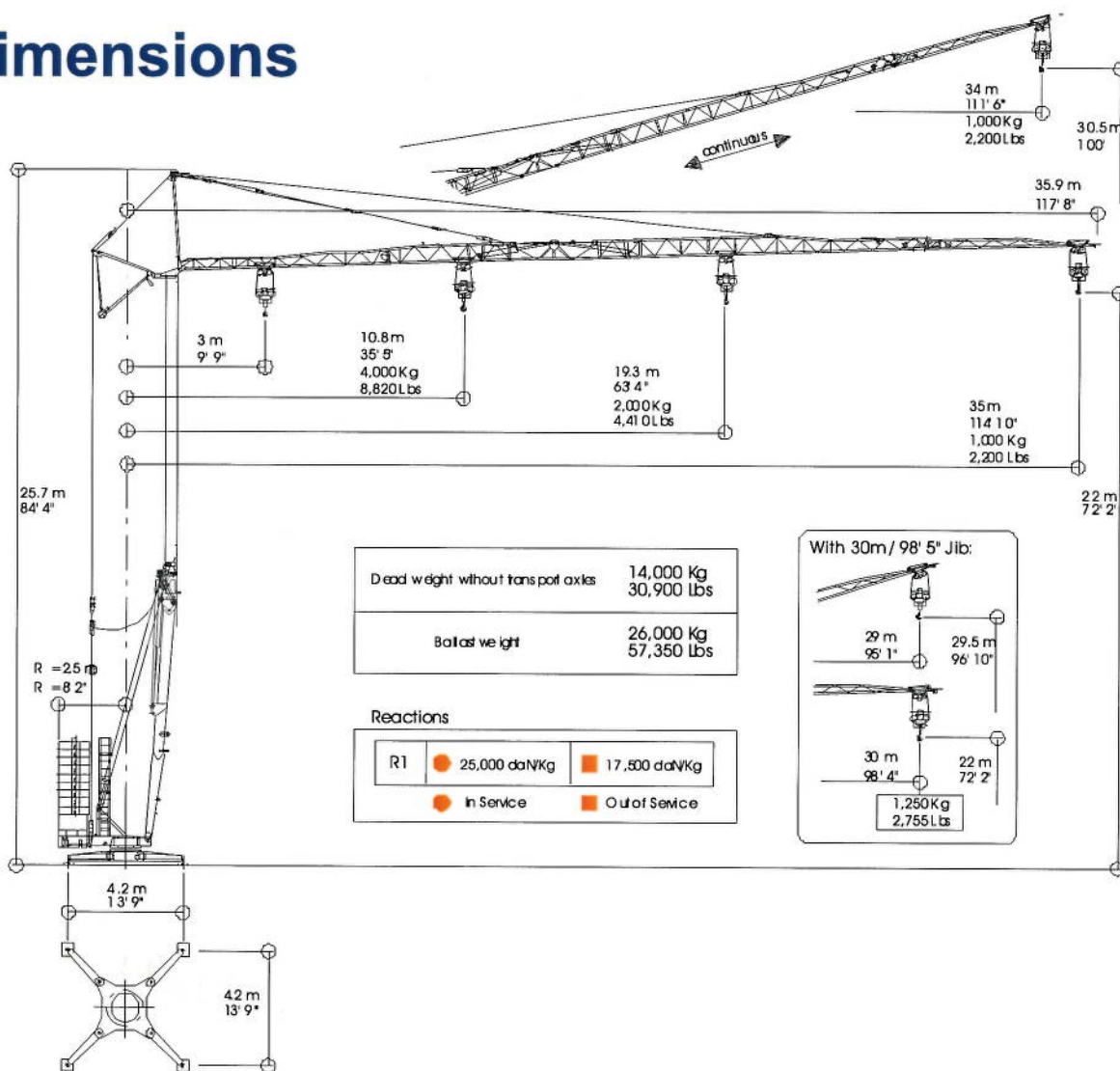


## Transport






## Dimensions



## Load Diagrams






		- Luffing jib -																- Continuous load chart -																1,000 Kg / 2,200 Lbs	
		2-Part Line																																	
Jib Length	Max Capacity @ Hook Radius	ft	35.5	39.4	45.9	52.5	59.0	65.6	72.1	78.7	85.3	91.8	98.4	105	114.8																				
115 ft	4,410 lbs - 63.3 ft	m	10.8	12.0	14.0	16.0	18.0	20.0	22.0	24.0	26.0	28.0	30.0	32.0	35.0																				
35 m	2,000 kg - 19.3 m	lbs	4,410	4,410	4,410	4,410	4,410	4,210	3,750	3,395	3,085	2,820	2,600	2,400	2,200																				
98.5 ft	4,410 lbs - 66.3 ft	kg	2,000	2,000	2,000	2,000	2,000	1,910	1,700	1,540	1,400	1,280	1,180	1,090	1,000																				
30 m	2,000 kg - 20.2 m	lbs	4,410	4,410	4,410	4,410	4,410	4,210	3,970	3,640	3,260	2,975	2,755																						
		kg	2,000	2,000	2,000	2,000	2,000	2,000	1,800	1,620	1,480	1,350	1,250																						
		4-Part Line																																	
115 ft	8,820 lbs - 35.5 ft	lbs	8,820	7,670	6,350	5,380	4,650	4,650	3,640	3,285	2,975	2,710	2,490	2,292	2,095																				
35 m	4,000 kg - 10.8 m	kg	4,000	3,480	2,880	2,440	2,000	2,110	1,650	1,490	1,350	1,230	1,130	1,040	950																				
98.5 ft	8,820 lbs - 36.7 ft	lbs	8,820	8,090	6,680	4,410	5,660	4,910	3,860	3,460	3,130	2,865	2,645																						
30 m	4,000 kg - 11.2 m	kg	4,000	3,670	3,030	2,000	2,570	2,230	1,750	1,570	1,420	1,300	1,200																						

*All specifications are subject to change. Measurements are rounded to the nearest inch.*

*For confirmation and further information, please contact Mega Cranes.*



## Specifications

				Speed	Capacity	Power
Hoisting Specifications	▲ ● ▼	A  two part	A1	6 m/min 19'8" /min	2,000 Kg 4,410 Lbs	16.8/14.4/3.6 HP 12.4/10.6/2.6 KW
			A2	25.2 m/min 82' 8" /min	2,000 Kg 4,410 Lbs	
			A3	50.5 m/min 165' /min	1,000 Kg 2,205 Lbs	
		B  four part	B1	3 m/min 9' 10" /min	4,000 Kg 8,820 Lbs	16.8/14.4/3.6 HP 12.4/10.6/2.6 KW
			B2	12.6 m/min 41' /min	4,000 Kg 8,820 Lbs	
			B3	25.2 m/min 82' 7" /min	2,000 Kg 4,410 Lbs	
Trolley Specifications	◀ ■ ▶	C 	C1	20 m/min 65' 7" /min	1,000 Kg 2,205 Lbs	4 HP 3 KW
		D 	D1	20 m/min 65' 7" /min	4,000 Kg 8,820 Lbs	
			D2	40 m/min 131' /min	4,000 Kg 8,820 Lbs	
Slewing Specifications				0 - 0.8 rpm		2.2 KW 3 HP
Power Requirement						480 V 60 Hz 30 KVA
In compliance with the EEC 87/405 instruction on noise level						DIN 15018



Mega Cranes Ltd.  
6330 - 148th Street  
Surrey, BC V3S 3C4  
Ph. 604-599-4200 • Fax 604-599-5250



Surrey  
Tel: 604 599-4200  
Fax: 604 599-5250

Blackfalds  
Tel: 403 885-4292  
Fax: 403 885-4269

Toronto  
Tel: 905 625-4200  
Fax: 905 625-7685

Toll Free:

1-877-699-4200

6330 - 148th Street, Surrey, BC V3S 3C4  
Box 68, Blackfalds, AB T0M 0J0  
Suite 206, 5080 Timberlea Blvd., Mississauga, ON L4W 4M2