

Lifting your dreams

GR-1200XL

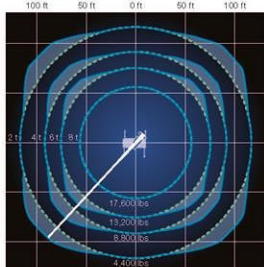
120 TON CAPACITY (110.0 metric tons)
Longer Rounded Boom and Compact Carrier
Compact carrier

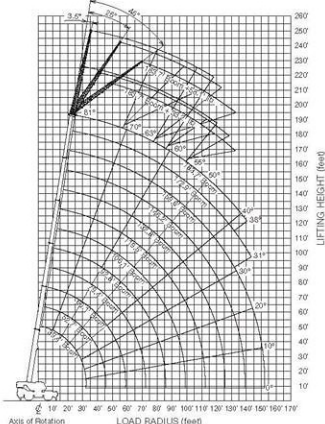
The GR-1200XL has a compact carrier whose size is almost the same as Tadano's GR-1000XL. This compactness provides high maneuverability and easy transportability.


 Overall length:
approx. 47' 4-7/8" (14,450 mm)
 Overall width:
approx. 10' 10-1/2" (3,315 mm)
 Overall height:
approx. 12' 5-3/8" (3,795 mm)

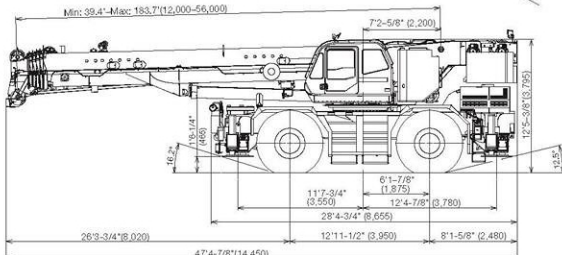
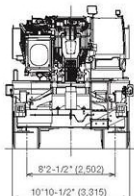
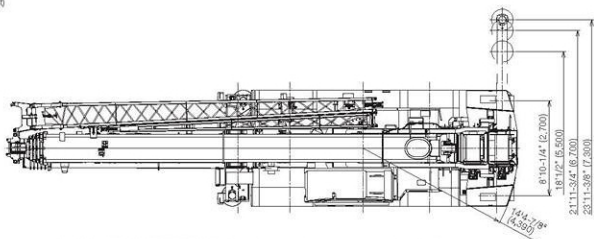
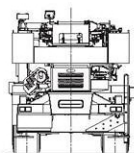
Smart Chart system

Tadano's newly developed Smart Chart taps the potential of a crane by expanding the conventional circular working area into a square one, improving work safety and efficiency.


33.2 ft / 58.1 ft (10.1 m / 17.7 m)
Longer boom and larger capacity
39.4 ft - 183.7 ft (12.0 m - 56.0 m)
Carrier length: 28' 4-3/4" (8,655 mm)
Max. lifting height:
184.0 ft (56.1 m) [Boom only]
241.4 ft (73.6 m) [Boom + Jib]
Max. working radius:
144.3 ft (44.0 m) [Boom only]
153.8 ft (46.9 m) [Boom + Jib]

MODEL: GR-1200XL
WORKING RANGE


Max. lifting capacity	120 US tons (110 metric tons)	
Max. lifting height	Boom only	184.0 ft (56.1 m)
	Boom + Jib	241.4 ft (73.6 m)
Max. working radius	Boom only	144.3 ft (44.0 m)
	Boom + Jib	153.8 ft (46.9 m)
Boom length	39.4 ft - 183.7 ft (12.0 m - 56.0 m)	
Jib length	33.2 ft / 58.1 ft (10.1 m / 17.7 m)	

DIMENSIONS**

 **Dimension is with boom angle at -1.5 degree. () Reference dimensions in mm.
 Note: Some specifications are subject to change.
