



5.24

TELESCOPIC HANDLERS



MAIN SECTORS



INDUSTRY

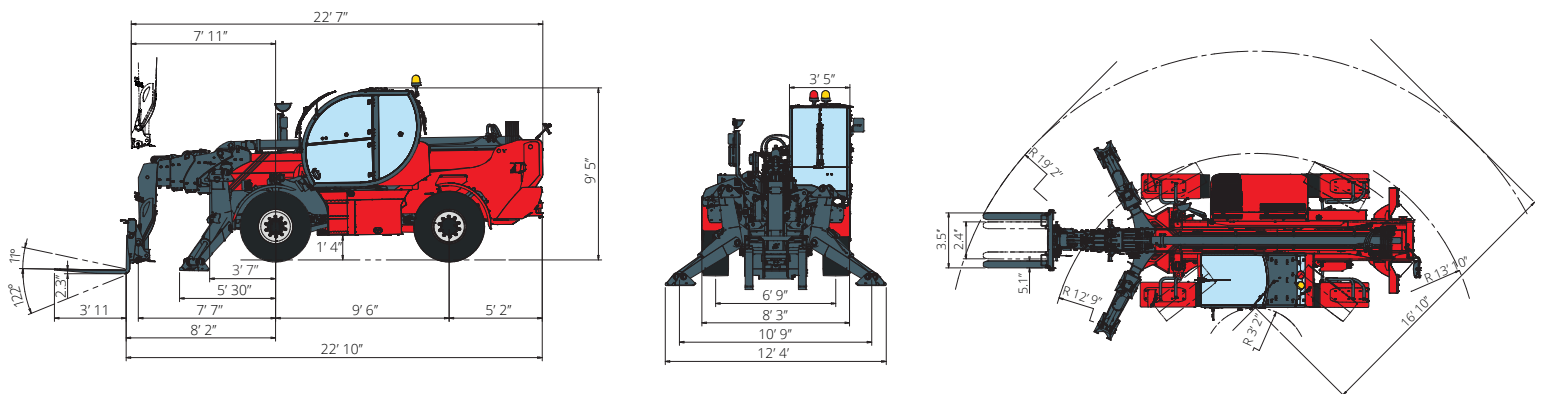


CONSTRUCTION

Maximum lifting height: 78' 5"
Maximum reach: 62' 7"
Electronically controlled hydrostatic transmission
Automatic leveling device
Pivoting stabilizers

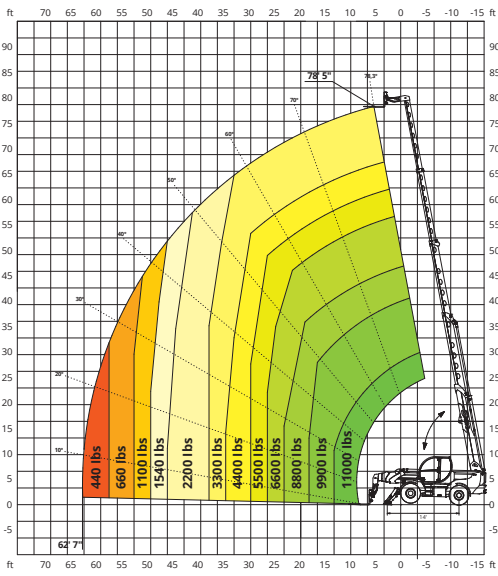
MACHINE MODEL	Rotating telescopic handler	TH 5.24
	Maximum lifting capacity	11,000 lbs (center of gravity 24 in)
	Maximum lifting height	78' 5"
ENGINE	Type	Deutz TCD 3,6 L4 Tier 4f
	Rated power	100 kW (134 HP) @ 2,200 rpm
	Maximum torque	500 Nm @ 1,600 rpm
	Displacement	0.95 US gal
	Cylinders	4 in line
	Engine configuration	Turbocharged direct injection diesel
	Cooling system	Water - intercooler
TRANSMISSION	Type	Hydrostatic
	Model	Danfoss / Rexroth
	Maximum pressure	480 bar
	Displacements	Electronically controlled Variable displacement pump Variable displacement motor
	Gear box	Dropbox, 2 speeds forward-reverse
AXLES AND BRAKES	Type	Axles with planetary gearboxes
	Rear axle	Steering and oscillating with hydraulic locking
	Front axle	Steering, oscillating, shifting +/-5°
	Service brake	Hydraulically operated wet multi-disk brakes on each axle
	Parking brake	Hydraulic with negative action
	Tyres dimensions	445/65 R22,5
PERFORMANCE	Max. travel speed	25 Mph
	Drawbar pull	72 kN
	Gradeability	47%
	Turning radius (end of forks)	230"
WEIGHTS	Total unladen	34,170 lbs
	Front axle unladen (boom retracted and lowered)	15,100 lbs
	Rear axle unladen (boom retracted and lowered)	19,070 lbs
TANK AND SYSTEM CAPACITIES	Fuel tank	40 US gal
	AdBlue	2.6 US gal
	Hydraulic oil tank	37 US gal
	Engine oil tank	2.4 US gal
	Cooling liquid	5.3 US gal
HYDRAULIC CIRCUIT FOR MOVEMENTS	Max. operating system pressure	350 bar
	Circuit type	Load sensing
	Service pump	Danfoss / Rexroth - Variable displacement
	Controls for boom and turret movements	Danfoss - SIL 2 electro-proportional valve
	Controls for stabilizers	Bosch Rexroth - Electro-hydraulics controls
Movements control	1 joystick Danfoss with FNR switch and dead man safety device - Management with CAN bus technology	
STANDARDS MET	EN 1459-1: concerning standards for variable-reach trucks EN 13000: concerning standards for hydraulic cranes EN 280: concerning standards for mobile elevating work platforms FOPS/ROPS EU 2016/1628: concerning engine emissions standards	

The data in this brochure are informative and subject to change without notice



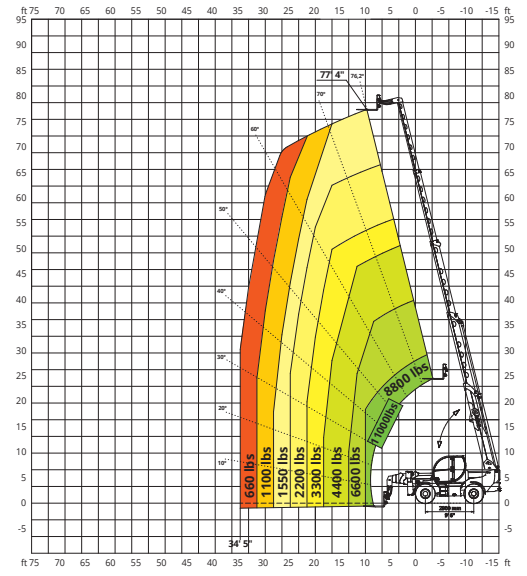
ON STABILIZERS

LOAD CHART ON EXTENDED STABILIZERS



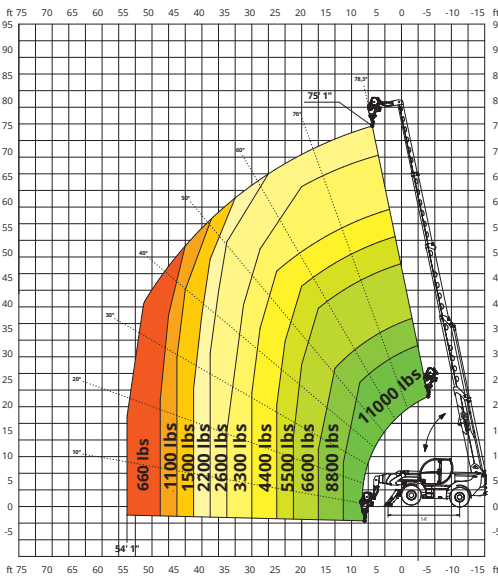
ON TIRES

FRONT LOAD CHART ON TIRES



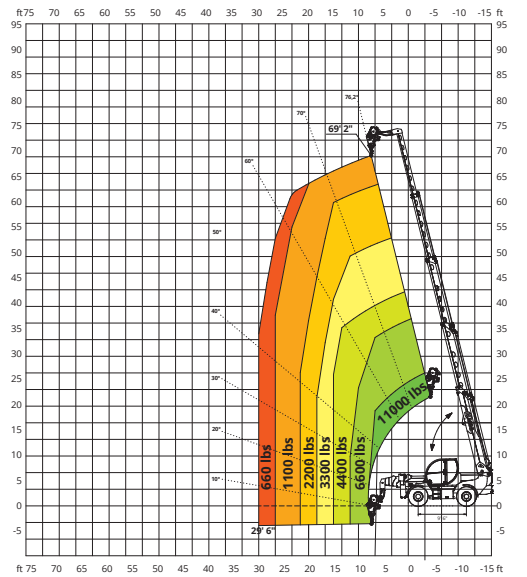
W 5

WINCH 11,000 lbs ON STABILIZERS



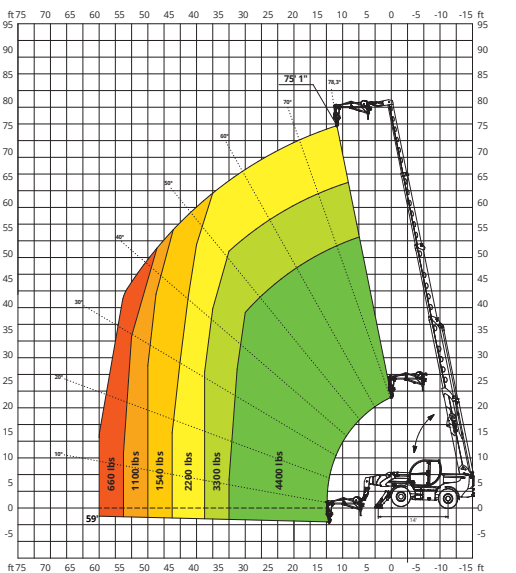
W 5

WINCH 11,000 lbs ON TIRES



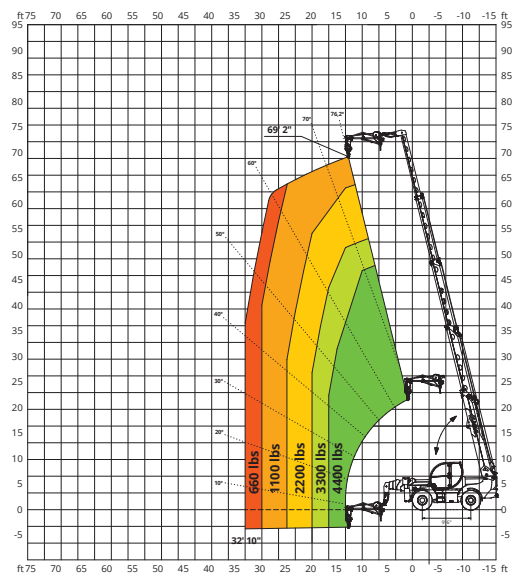
JW 2000

JIB WINCH 4,400 lbs ON STABILIZERS

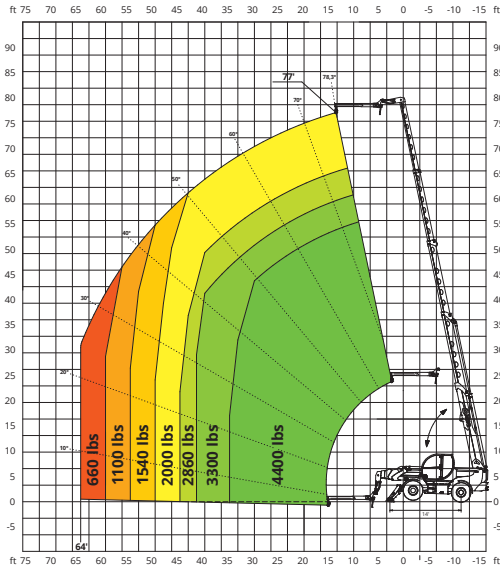


JW 2000

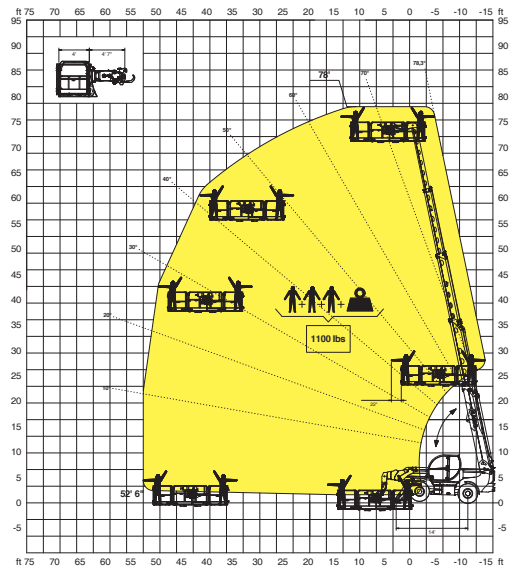
JIB WINCH 4,400 lbs ON TIRES



JIB **4,400 lbs**



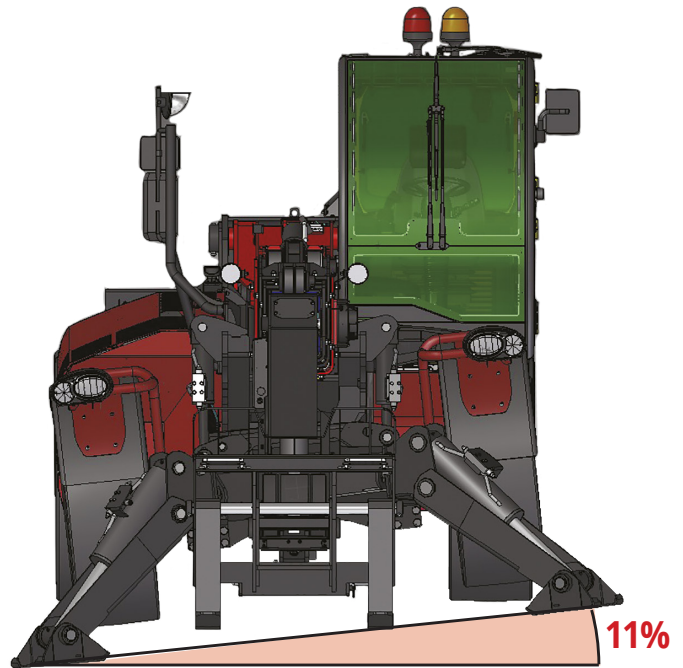
ROTATING EXTENDABLE BASKET **1,100 lbs**



LATERAL SHIFTING SYSTEM

This telehandler is equipped with a lateral shifting system that permits to move sideways the rear part of the chassis and, with it, the telescopic boom relative to the longitudinal axis of the machine to correct the load position without the need to move the machine.

This system, in fact, allow a shifting of +/- 5° that corresponds to a shift of +/- 5' with the boom completely extended, independently from which attachment is equipped.



Leveling works both on wheels and on stabilizers as the front axle is coupled with the stabilizers