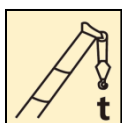


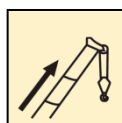
XCT25L5_Y汽车起重机 / Truck Crane

产品简介

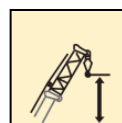
Brief introduction



25 t



40.5 m



48.1 m



XCT25L5_Y广泛适用于建筑工地、城市改造、交通运输、港口、桥梁、油田、矿场等场所和其它复杂的作业环境

XCT25L5_Y Truck crane is widely used for the lifting operations in general engineering projects, such as construction site, urban renewal, communication and transportation, ports, bridge, oilfields and mine, and complex working environments.



XCT25L5_Y

- 五节“U型”40.5米主臂，最大起重能力：25吨，最大起升高度：48.1米，最大工作半径：38.4米，性能全面领先
- 5-section boom of 40 m with U-type profile is adopted; the max. lifting load is 25 t; the max. lifting height is 48.1 m; the max. working radius is 38.4 m; ; all capacities take the lead in its class.
- 丰富的工况适应性配置，为用户提供更为多样的个性化需求；
- Abundant configurations suitable for various working conditions, meet more diverse personalized requirements;
- 整机适应多雨、高温湿热的作业环境，50℃高温环境持续作业不停机。
- Suitable for applications in rainy, high temperature and humidity working environments and can continuously work without downtime in ambient temperature of 50℃.
- 操纵形式、副臂形式的多样性配置，可满足不同客户的需求。
- Abundant configurations of operating methods and jib types can meet the requirements of different customers.









回转机构

Slewing mechanism

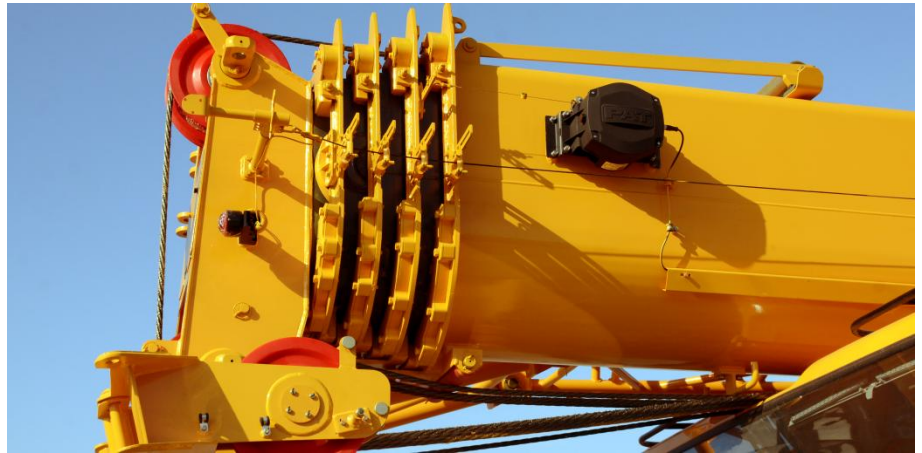
- 单排四点接触球外齿式回转支承，360度回转
- Single-row four-point ball contact external tooth slewing ring, may continuously slew 360°.
- 具有动力控制或自由回转的功能，可无级调速
- Power control or free slewing function is available, and the slewing speed may be infinitely regulated
- 回转速度为0-3r/min
- Slewing speed: 0-3 r/min



超强起重性能

Super lifting performance

- 行业最长五节 40.5米“U型”主臂，主吊钩最大 10倍率，性能领先同类产品 20%。
- 5-section boom of 40.5 m with U-type profile, best-in-class boom length. The max. parts of line for the main hook block is 10. The crane has capacities of 20% higher than that of the competitive cranes.
- 创新单板臂头与紧凑式臂尾结构，搭接比行业最大，吊臂承载力更强。
- Innovative single-plate boom head and compact boom tail structure, best overlapping ratio in its class and stronger boom load-bearing capacity.
- 选配腹置副臂，更好地适应狭窄地区作业
- An optional under lung jib is available to facilitate operation in confined site.



新型节能液压系统

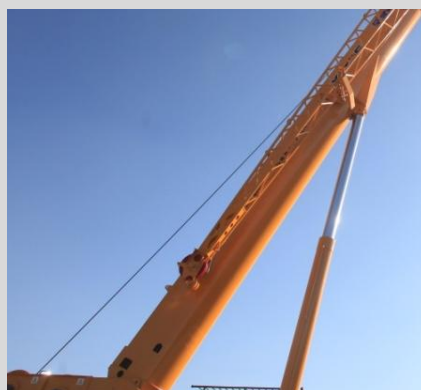
New energy-saving hydraulic system

- 回转最低稳定速度达到 $0.1^{\circ}/s$ ，起升最低稳定速度（卷筒处） $2.5m/min$ ，起吊精准，更加适合精准吊装作业；
- The min. stable slewing speed of $0.1^{\circ}/s$ and min. stable lifting speed (at drum) of $2.5 m/min$ contribute to precise and safe lifting operations;
- 双泵分合流控制技术，复合动作性能行业最高，作业高效；
- Dual-pump confluent control technology brings higher combined movement performance in its class, higher working efficiency.

起升机构

Hoisting system

- 定量泵-变量马达开式液压系统
- Open type hydraulic system with variable displacement pump and constant displacement motor equipped
- 行星齿轮减速器、常闭式制动器
- Planetary gear reducer, normally closed brake
- 最大单绳拉力为30KN
- Max. single line pull is 30 KN
- 最大起升速度135m/min
- Max. hoisting speed is 135 m/min



变幅机构

Elevating system

- 单变幅油缸，可靠性高
- Single elevating cylinder, high reliability
- 使用带负载补偿功能的变幅平衡阀
- Elevating balance valve with load compensation function



动力传动系统

Power transmission system

- 上柴发动机（右驾机型国三排放，左驾机型国五排放）
- Shanghai diesel engine (Right-hand drive, China III compliant engine ; Left-hand drive, China V compliant engine)
- 陕齿8档机械变速箱，软轴操纵，全同步器
- Eight-speed, mechanical transmission made by Shaanxi Gear Factory, operated through a flexible shaft, with a synchronizer fitted
- 最高车速85Km/h，最大爬坡能力39%
- Max. travel speed is 85 km/h, max. grade ability is 39%





低速大扭矩动力传动系统

Low-speed large-torque power transmission system

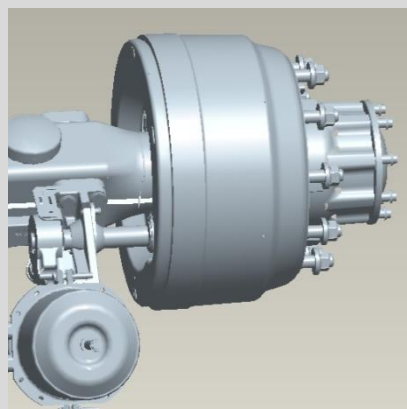
- 以低速大扭矩发动机和大速比变速箱为核心的全新动力平台，驱动性能强，承载能力高，稳定性好；
- The new power system consists of a low speed large torque engine and a transmission with high speed ratio contributes to strong driving performance, high load-bearing capacity and better stability.
- 实现了高动力性能与低油耗完美融合，行驶油耗降低6%，动力性能提高3%，作业状态综合油耗降低15%；
- High power performance and low fuel consumption are perfectly integrated, resulting in reduction by 6% in driving fuel consumption, improvement by 3% in power performance and reduction by 15% in comprehensive fuel consumption during operation.



悬挂系统

Suspension system

- 前悬架采用少片变截面钢板弹簧
- Less leaf springs with tapered cross-section are adopted for front suspensions
- 右驾机型后悬架采用橡胶悬架，V型推力杆结构
- Chassis with right-hand drive cab is equipped with rubber rear suspensions with V-type push rods.
- 左驾机型后悬架采用钢板弹簧平衡梁加V型推力杆结构
- Chassis with left-hand drive cab is equipped with leaf spring balance suspension with V-type push rods.



制动系统

Braking system

- 脚踏板操纵的双回路气压制动。鼓式制动器
- Foot pedal operated double-circuit air pressure brake. Drum brake.
- 驻车制动：放气制动，作用于2、3轴车轮。
- Parking brake: spring-loaded brake, acting on the wheels of axles 2 and 3.
- 辅助制动：发动机排气制动
- Auxiliary brake: engine exhaust brake.



工况自动规划技术

Automatic planning technology of working conditions

- 自动推荐最优工况
- Automatically recommend the most proper working conditions
- 简化查询与设置工况过程
- Simplified procedure of inquiry and setting of working condition





新型外观造型与人性化设计

New appearance and humanized design

- 新一代外观设计，整机刚劲有力，时尚的操纵室新外观，层次感与力量感完美结合；全面的人体工程学分析，人性化细节处理，打造驾驶轻松、操纵舒适，维护便捷的内在品质
- A new generation appearance design presents power and vigor, such as the appearance of operator's cab, delivering the feeling of perfect combination of streamlining and strength; with ergonomic analysis and personalized consideration of details integrated, a quality product is created that is convenient to maintain, easy to drive and comfortable to operate.



立体空调风道

Three dimensional air vents

- 立体式送风，流速更细腻，避免冷热不均。
- Three dimensional air supply, optimized flow rate, avoiding uneven heating and cooling.

软轴拨销机构，操纵室内即可完成回转锁止操作。

With flexible shaft pin puller device, slewing lock operation is available in operator's cab.

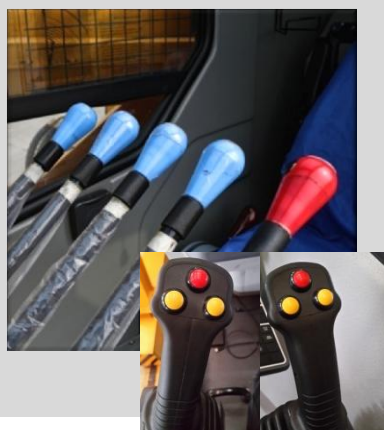


锁止
Slew



操纵室标配大功率制冷空调，提升空调制冷效果。

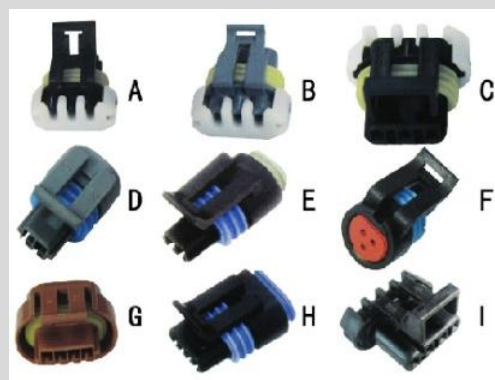
High-power air conditioner is available in the operator's cab with improved cooling effect.



人性化操纵系统

Ergonomic design of controls

- 机械机型采用机械操纵杆，可选装操纵杆加长节，人体工程学设计。
- Mechanical control levers, ergonomically designed control lever extensions are available for option.
- 先导机型采用先导液比操纵手柄，无级调速，反应灵敏，操纵自如。
- Pilot hydraulic proportional control levers, sensitive and easy to operate.



新型外观造型与人性化设计

New appearance and humanized design

- 全覆盖式走台板，铝合金型材，品质感强，独立式轮包，层次丰富；
- Fully covered aluminum alloy deck, strong sense of quality; independent wheel fender, sense of plentiful layers;
- 铝型材防护栏，表面质量高、防腐性能强；
- Guard rails made of aluminum alloy, high quality and strong anti-corrosion capacity;
- 全新人机设计把手和扶梯，精良考究工艺制造，攀爬方便可靠。
- Ergonomically designed hand holds and hand rails, made by fine manufacture process, convenient and reliable for climbing.



高可靠性元器件

More reliable component

- 防水插接件，接插件内部带橡胶护套，防水性能极佳，防护等级达到IP67，行业最高。
- Waterproof components, with protection level of IP67.



东南亚地区适应性提升

Improved adaptation for

Southeast Asia region

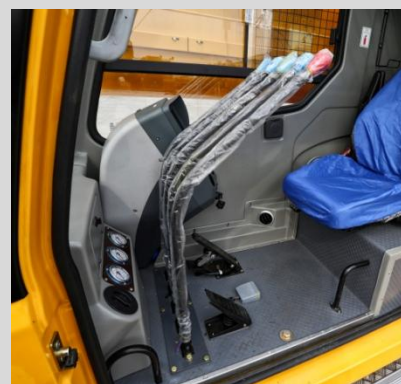
- 不锈钢膨胀水箱
- Stainless steel expansion tank
- 大功率散热器
- Large power radiator
- 铝合金燃油箱
- Aluminum alloy fuel tank
- 铝合金贮气筒
- Aluminum alloy reservoir



驾驶室

Driver's cab

- 钢结构全宽豪华驾驶室，全封闭，密封性好，防腐蚀、软化内饰，装备豪华舒适。
- New full-dimension steel enclosed cab, luxury and comfort. It is designed to be leakproof, anti-corrosive and shockproof.
- 配置收放机、可调式座椅、简易卧铺、方向盘、安全玻璃、3只雨刷器、电动后视镜、电动门窗升降器、杂物箱。
- It is equipped with radio-cassette player, adjustable seats, simple sleeper, steering wheel, safety glass, 3 wipers, electrical adjustable mirrors, electrically operated door window lifters and glove box.



徐工人机交互系统

XCMG man-machine interactive system

- 人机交互系统，实现了操作人员与起重机的友好对话。轻松掌控起重作业的各种状态信息，操纵更轻松、便捷
- Man-machine interactive system provides various working information for operator through establishing a friendly dialogue between operator and the crane, making the operation easier and convenient



操纵室

Operator's cab

- 全人机工学工作空间设计,作业更舒适,安全
- Ergonomically designed working space makes operation safer and more comfortable
- 5.7寸真彩色屏,提供卓越的视觉操作体验
- 5.7-inch color touch screen displays, provide excellent visual operation experience



- 安全保护、吊装动作、操纵环境三个区域,控制便捷
- Three control areas for safety protection, lifting operation and operating environment make control easier and more convenient



地址：中国江苏徐州市铜山路165号

Add : No.165 Tongshan Road Xuzhou Jiangsu China

电话(Tel) : +86-516-83462242/83462350

质量监督电话(Quality Inquiry Tel) : +86-516-87888268

备件电话(Spare Parts Tel) : +86-516-83461542

邮编(Post Code) : 221004

网址(Web) : www.xcmg.com/qizhongji

服务热线 Service Tel

400-110-9999

400-001-5678



本印刷品不属于合同。出于产品不断改进的需要，我们保留对产品型号、参数、配置进行变更的权利，恕不另行通知。图片仅供参考，具体产品以实物为准。图片中产品可能并非标准配置，部分部件可能需要另行购置。办理牌照和上路行驶需遵守当地法规。

This print does not belong to the contract. We reserve the right to modify the design (such as product model, parameters and configuration) without notice for improvement. The pictures are just for reference. The product in the picture may not be standard configuration. Some parts need to be purchased separately. Conform to the local laws for license application and road traveling.