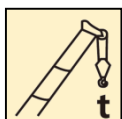


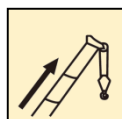
XCT50_M 汽车起重机 / Truck Crane

技术规格书

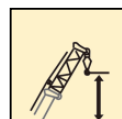
Technical specifications



50 t



43.5 m



59.5 m

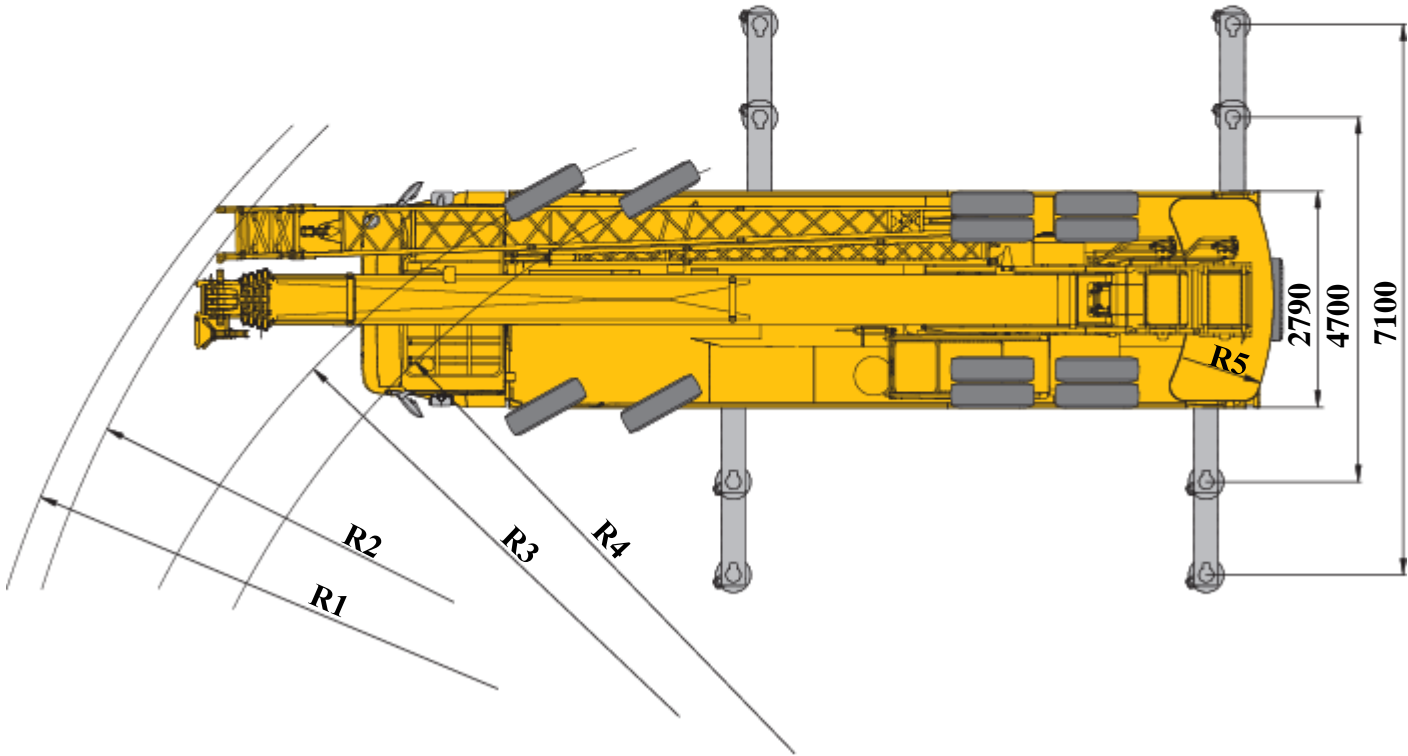
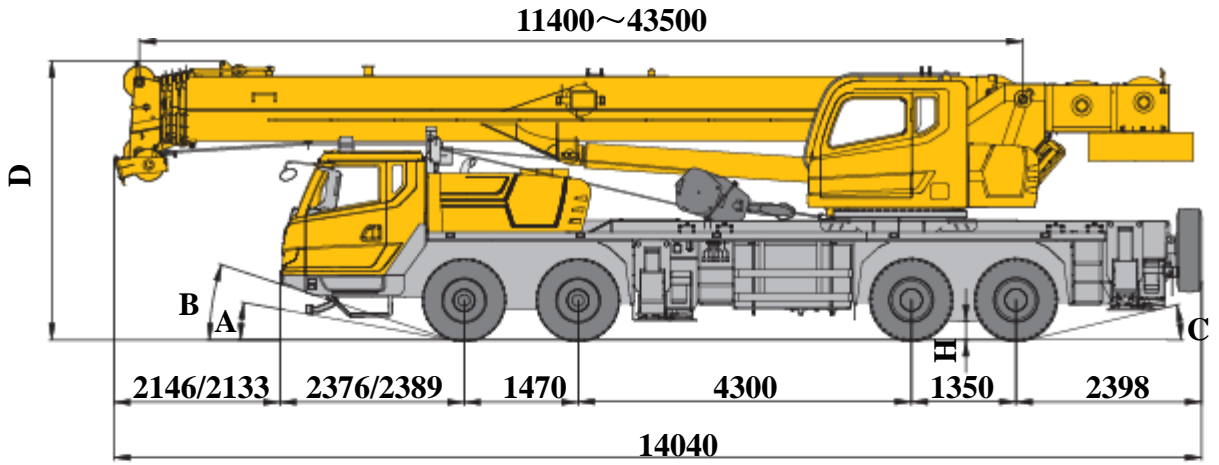


目录

Contents

目录 Contents	
尺寸参数 Dimensions	3
技术规格 Technical specifications	4-7
重量/作业速度 Weight / Working speeds	8
臂架组合方案 Boom / Jib combinations	9
主臂 Boom	10-12
副臂 Jib	13-14
符号标识 Description of symbols	15
注意事项 Notes	16
主要技术参数表 Table of main technical parameters	17-18


尺寸参数 Dimensions



	A	B	C	D	H	R1	R2	R3	R4	R5
315/80 R22.5	10°	18°	13°	3630	250	14720	14270	12000	11270	3800

技术规格


Technical specifications

 底盘	配置
车架	徐工设计、制造，全覆盖式走台板，防扭转箱型结构，高强度钢材制造。 ●
支腿	4支腿。纵向H形布置，操作杆控制液压动作。可由底盘任意一侧同时或单独控制各支腿的动作，设有水平仪。支腿油缸均设有单向阀，且垂直支腿带有双向液压锁。 支脚盘尺寸：φ450mm 最大起重量时支腿反力：580KN ●
发动机	中国重型汽车集团，直列、水冷、四冲程、增压中冷、高压共轨；WD615.334，额定功率247kW/2200rpm，最大扭矩1350Nm/1100-1600rpm，国三排放标准。 燃油箱容积：320L。 ●
变速箱	采用陕齿9JS135TA机械式变速箱，手动远距离软轴操纵，全同步器；9个前进档，1个倒档，工作稳定、可靠。 ●
车桥	高强度桥，引进国外先进技术，名牌厂家制造，性能可靠。 ●
悬挂	后悬挂系统，采用V型推力杆结构、钢板弹簧悬架，增加底盘行驶稳定性，减少轮胎的磨损。 ●
轮胎	315/80R22.5-22PR，无内胎轮胎，重量轻，散热好，行驶噪音低，承载力强，使用寿命长。 ●


制动	行车制动：脚踏板操纵的双回路气压制动。第一回路作用于一、二轴车轮上，第二回路作用于三、四轴车轮上。 驻车制动：弹簧储能制动，作用于三、四轴车轮； 辅助制动：发动机缸内制动、排气制动，安全可靠，延长制动摩擦片使用寿命。 ●
转向	机械式转向机构，带有液压助力。 ●
驾驶室	豪华驾驶室。配备电动升降器的安全玻璃、可调式座椅、电动调节后视镜、可调节高度及角度方向盘、液晶显示器和CD音响等。 2公斤灭火器。 标配冷暖空调。 ●
电气系统	直流24伏特，串联12伏特的电池组2个。 发电机：28.5±0.3伏特，70安培。 ●
安全装置	液压双向锁 ●
	排气管安全防火罩 ○
	ABS ○

技术规格

Technical specifications

 上车	配置
结构 徐工设计、制造，高强度钢材制造。	●
液压系统 专用节流装置匹配阀后补偿负载敏感设计，系统最低流量更稳定，系统刚度更合理，作业微动性、平顺性更突出；采用分合流技术，起升、变幅、伸缩双泵合流；风冷式液压油散热器； 液压油箱容积：800L	●
操纵方式 机械操纵。	●
主起升机构 液压控制调速，装有双折线绳槽卷筒，由液压马达通过行星齿轮减速器驱动，内置常闭式制动器并带有平衡阀。 具有轻载高速、重载低速的特点。	●
副起升机构 液压控制调速，装有双折线绳槽卷筒，由液压马达通过行星齿轮减速器驱动，内置常闭式制动器并带有平衡阀。 具有轻载高速、重载低速的特点。	●
回转机构 四点接触球式回转支承，由液压马达通过行星齿轮回转机构驱动，可连续回转360°；具有动力控制或自由回转的功能，可无级调速。	●
变幅机构 单支双作用前置液压变幅油缸，带有平衡阀。	●
吊钩 60t吊钩	●
35t吊钩	○
4.5t吊钩	●
平衡重 固定平衡重4t	●
操纵室 新型钢制操纵室，装有安全玻璃，车窗装有遮阳帘，外开式车门，座椅靠背可倾斜定位。 前窗顶窗装有雨刮器，标准的操纵控制件和指示器。 配备单冷空调。	●
空调制暖装置	○

安全装置	配置
液压平衡阀；液压溢流阀；力矩限制器；操纵杆弹簧式回中系统；三圈保护器，防止钢丝绳过放；臂头设置高度限位，防止钢丝绳过卷。	●
风速仪	○
卷扬监视装置	○
三色报警灯	○

 臂架系统	配置
主臂 由1节基本臂和4节伸缩臂组成，采用抗扭曲设计，高强度结构钢制造。双缸绳排伸缩机构。 主臂长度：11.4m~43.5m。	●
副臂 2节桁架式焊接结构，具有0°、15°、30°三种固定副臂安装角 固定副臂长度：9.5m/16m	●
臂端单滑轮 单滑轮，安装在主臂顶端用于单股钢丝绳起重作业，起重性能与主臂相同，但最大起重量不超过4500kg。	●


产品各部件明细如上所述，具体部件明细请参照产品报价单

符号说明：

- —— 表示标准配置；
- —— 表示选装配置。

技术规格


Technical specifications

 Chassis		
Frame	Designed and manufactured by XCMG, it is made of high strength steel with fully covered walking surface and anti-torsion box-typed structure.	●
Outriggers	Four outriggers arranged in H-shape are hydraulically controlled by control levers. There is an outrigger control station located at each side of the chassis, and there is a level gauge on each control station. The outrigger movements can be simultaneously or separately controlled at any side of the chassis. Each jack cylinder is equipped with a double-way hydraulic valve. Outrigger float diameter: $\phi 450$ mm Reaction force of outrigger at max. lifting load: 490 KN	●
Engine	WD615.334, in-line, six-cylinder, water-cooled, four-stroke, supercharging, high pressure common rail engine, manufactured by Sinotruk Group, with rated power of 247 kW /2200 rpm and max. torque of 1350 Nm / 1100-1600 rpm, compliant to China III emission standard. Fuel tank capacity : 320 L	●
Transmission	Mechanical transmission 9JS135TA, made by Shaanxi Fast Gear Co., Ltd., manual flexible shaft control, 9-forward speed and 1-reverse speed with a synchronizer.	●
Axles	High strength axles, made by famous makers through adoption of foreign advanced technology, with reliable performance.	●
Suspensions	Leaf spring suspensions with V-type push rods are adopted, leading to improved chassis stability and reduced tire wear.	●
Tires	315/80R22.5-22PR , tubeless tire, light weight, good heat dissipation, low noise, strong bearing capacity, long service life.	●


Brakes	Service brake: controlled by foot pedal, double-circuit air pressure brake. The first circuit acts on the wheels of axles 1 and 2, and the second circuit acts on the wheels of axles 3 and 4. Parking brake: spring-loaded brake, acting on the wheels of axles 3 and 4. Auxiliary brake: engine compression brake, engine exhaust brake, safe and reliable, and will prolong the service life of brake lining.	●
Steering	Mechanically steering mechanism with a hydraulic booster.	●
Driver's cab	Luxurious cab, equipped with adjustable seats, safety glass, electrically operated door window lifters, electric-adjustable mirrors, steering wheel adjustable in height and angle, liquid crystal display and CD player, etc. A fire extinguisher of 2 kg is available. Heater and air conditioner are standard.	●
Electrical system	DC 24 V, two sets of 12 V battery in series. Generator: 28.5 ± 0.3 V, 70 A	●
Safety devices	Double-way hydraulic valve	●
	Fireproof cover of exhaust pipe	○
	ABS	○

技术规格

Technical specifications

 Superstructure		
Frame	Designed and manufactured by XCMG, made of high-strength steel	●
Hydraulic system	Load sensitive design of compensation at the rear of valve with special throttling device matched, more stable system minimum flow, more reasonable system rigidity, more prominent fine-control and smoothness; confluence technology for lifting, elevating and telescoping double-pump confluence; air-cooled hydraulic oil cooler is fitted. Oil tank capacity: 800 L	●
Operating mode	Mechanical control	●
Main winch system	Hydraulic control is used for speed regulation. The system is driven by a hydraulic motor through a planetary gear reducer, with a normally closed brake, a balance valve and a grooved drum equipped. It has features of high speed with a light load and low speed with a heavy load.	●
Auxiliary winch system	Hydraulic control is used for speed regulation. The system is driven by a hydraulic motor through a planetary gear reducer, with a normally closed brake, a balance valve and a grooved drum equipped. It has features of high speed with a light load and low speed with a heavy load.	●
Slewing system	A single-row, four-point contact-ball slewing ring is driven by the planetary gear reducer of slewing mechanism, which is driven by a hydraulic motor, and may continuously slew 360°. Power control and free slewing function as well as stepless speed regulation are available.	●
Elevating system	A front support hydraulic cylinder is equipped for elevating operation, with a balance valve fitted.	●
Hook block	60t Hook block	●
	35t Hook block	○
	4.5t Hook block	●
Counter Weight	Fixed counterweight of 4t	●

Operator's cab	New steel cab. Safety glass and sun shield are used for windows. A swing-out door is equipped. The cab features a new ergonomic seat design with backrest adjustment. Wipers are fitted for the windshield and roof window; standard controls and indicators are ergonomically arranged in the cab. Air conditioner is standard. Heater	● ○
Safety devices	Hydraulic balance valve, hydraulic relief valve, LMI, spring centering system for control levers, lowering limiter for preventing wire rope from over-releasing, anti-two block at boom head for preventing wire rope from over-winding.	●
	Anemometer	○
	Winch monitoring device	○
	Tri colored light bar	○

 Boom and jib system		
Boom	Comprised of one basic boom and four telescoping boom sections, the boom adopts anti-distortion design and is made of high strength structural steel. Double hydraulic cylinders plus wire ropes mechanism is used to telescope the boom. Main boom length: 11.4 m ~ 43.5 m	●
Jib	Two-section, lattice, welded structure; three offset angles of 0°, 15° and 30°. Fixed jib length: 9.5 m/16 m	●
Single top	Fitted at boom head, used for single line operation. Its lifting performance is the same as that for boom, but the maximum lifting load does not exceed 4500kg.	●

Product parts list is as mentioned above. Please refer to the product quotation for specific parts.

Symbol explanation:

- —it means the standard configuration;
- —it means the optional configuration.

重量 Weight






车桥 Axle	1	2	3	4	总重量 Total weight
t	8.265	8.265	11.90	11.90	40.33





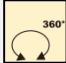


吊钩 Hook	倍率 Parts of line	吊钩重量 Weight (kg)	吊钩尺寸 Dimensions (mm)	备注 Remarks
60 t	12	517	537×544×1326	单钩 Single hook , 标配 Standard
35 t	10	403	460×544×1334	单钩 Single hook , 选配 Optional
4.5 t	1	100	300×300×356	单钩 Single hook , 标配 Standard

作业速度 Working speeds



		
315/80R22.5	2.5 ~ 90	38%



作业机构 Drive	作业速度 Working speed	最大单绳拉力 Max. single line pull	钢丝绳直径/长度 Rope diameter/ length
	0-130 m/min, 单绳, 第四层 m/min, single line, 4th layer	50 kN	18 mm/190 m
	0-130 m/min, 单绳, 第四层 m/min, single line, 4th layer	50 kN	18 mm/128 m
	0-2r/min		
	从-1°抬起至81°约40s Approx. 40 s for boom elevation from -1° to 81°		
	从11.4m伸出至43.5m约90s Approx. 90 s for boom extension from 11.4 m to 43.5 m		

臂架组合方案

Boom / Jib combinations

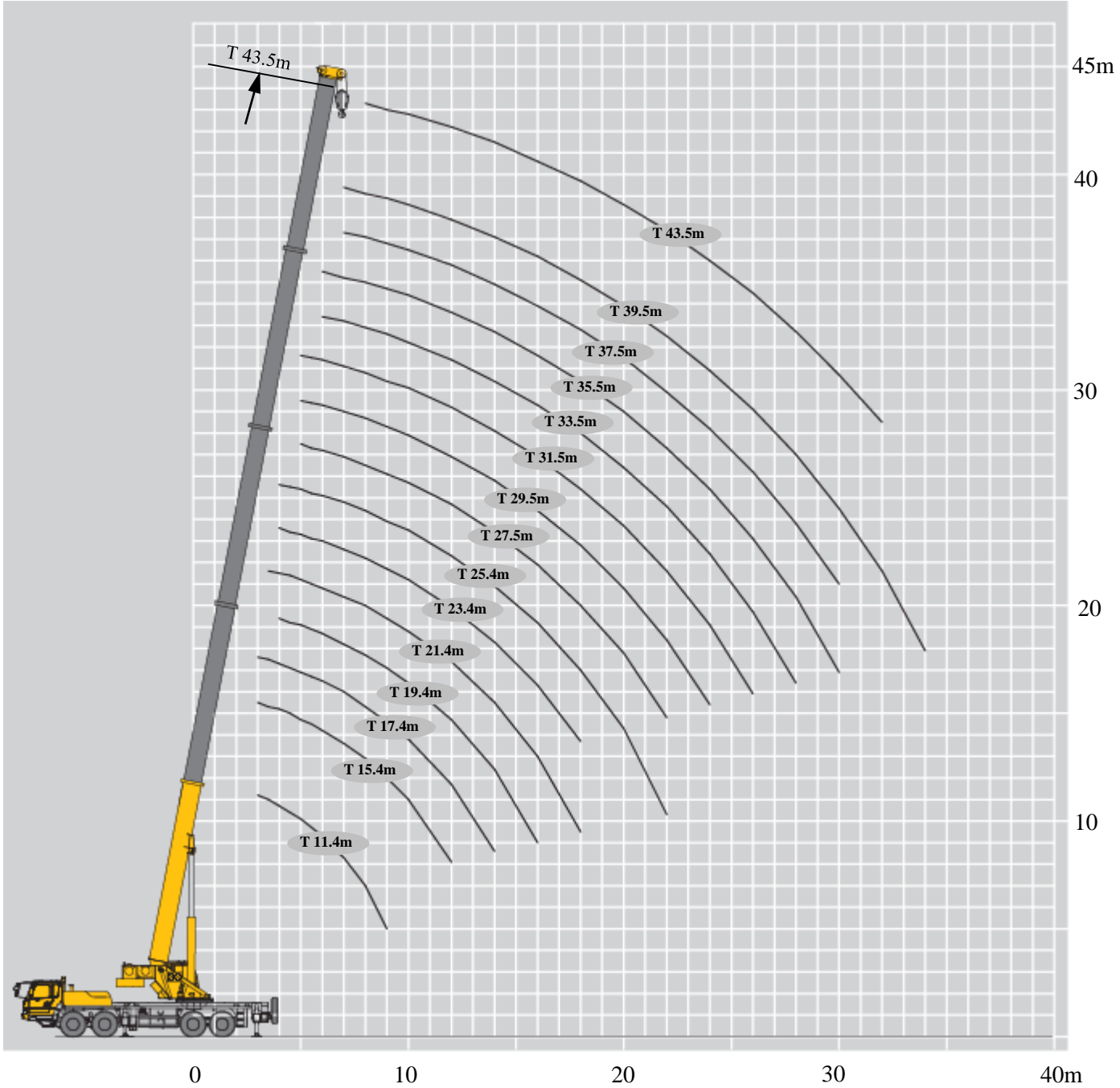


主臂
Telescopic boom

T : 11.4~43.5m

副臂
Jib

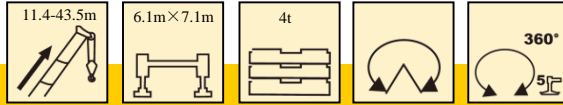
T : 43.5m
J : 9.5~16 m





起重性能表

Lifting capacities

T 11.4~43.5m

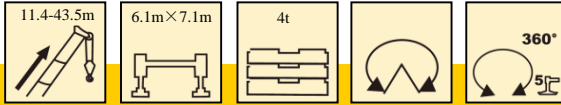


 m	11.4m	15.4m	19.4m	25.4m	31.5m	37.5m	43.5m	 m
3	50000	45000						3
3.5	50000	45000						3.5
4	48000	45000	35000	25000				4
4.5	45000	42900	32100	25000				4.5
5	41000	39600	29900	25000	18500			5
5.5	36500	36000	28100	24000	18500			5.5
6	33000	32500	26300	22700	18100			6
7	26200	25800	23400	20300	16600	13100		7
8	19900	19500	19300	18300	15200	12300	9000	8
9	15600	15300	15000	16200	14100	11500	8500	9
10		12100	11900	13000	13000	10700	8200	10
12		8100	7900	8900	9500	9400	7500	12
14			5400	6400	7000	7400	6800	14
16			3700	4700	5200	5600	5900	16
18				3400	4000	4300	4600	18
20				2500	3000	3300	3600	20
22				1700	2200	2600	2800	22
24					1600	2000	2200	24
26					1100	1500	1700	26
28						1100	1300	28
30						700	900	30
32							600	32

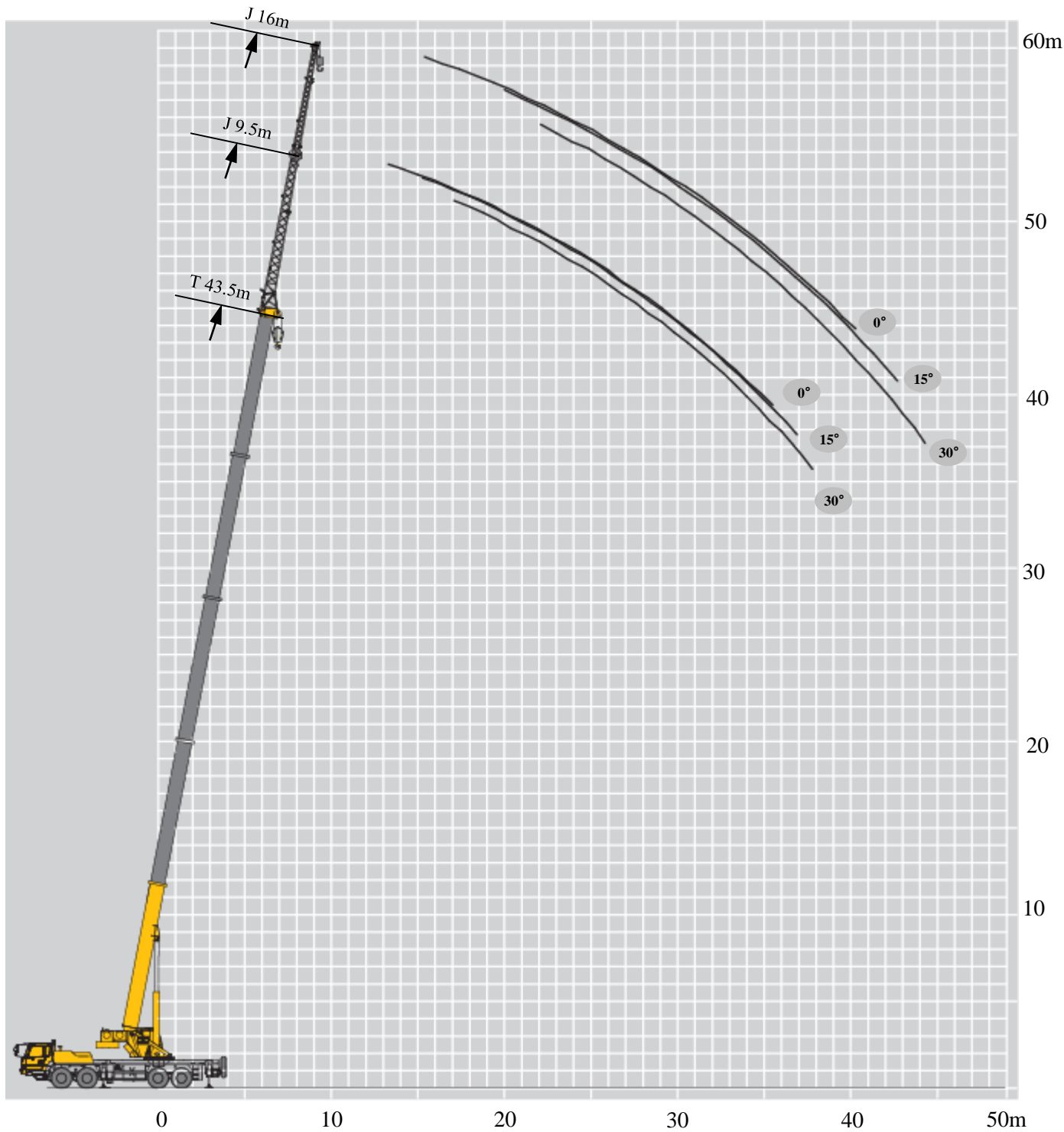
起重性能表

Lifting capacities

T 11.4~43.5m



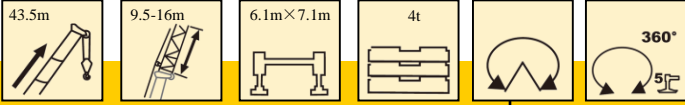
m	17.4m	23.4m	29.5m	35.5m	21.4m	27.5m	33.5m	39.5m	m
3	27000								3
3.5	27000				27000				3.5
4	27000	27000			27000				4
4.5	27000	25700			27000				4.5
5	27000	24700	16600		27000	24000			5
5.5	27000	23750	15800		27000	24000			5.5
6	27000	22800	15000	11600	27000	23400	14800		6
7	27000	21200	13600	10800	27000	21900	13700	10100	7
8	21500	19800	12400	10000	20900	20600	12800	9600	8
9	17200	17900	11300	9300	16600	17400	11900	9100	9
10	13900	14600	10500	8700	13400	14100	11000	8600	10
12	9800	10400	9100	7500	9300	9900	9600	7700	12
14	7200	7700	7900	6500	6700	7300	7700	6800	14
16		6000	6300	5800	5000	5500	5900	6000	16
18		4700	5000	5200	3700	4300	4600	4900	18
20			4000	4200		3300	3600	3900	20
22			3200	3400		2500	2900	3100	22
24			2600	2800			2300	2500	24
26				2300			1800	2000	26
28				1900			1300	1600	28
30				1500				1200	30
32								900	32
34								600	34



起重性能表

Lifting capacities

T 43.5m



°	9.5 m			16 m			°
	0°	15°	30°	0°	15°	30°	
78	4500	3000	2500	2800	1500	1200	78
75	4100	2800	2400	2400	1400	1100	75
72	3800	2600	2300	2000	1200	1000	72
70	3500	2500	2200	1900	1200	950	70
65	2300	2100	1900	1700	1000	850	65
60	1400	1300	1200	1000	900	750	60
55	800	800	700	500	400	400	55
50	400	400	300	100	100	100	50

符号标识

Description of symbols

常规标识

General symbols

	上车 Superstructure		底盘 Chassis
	臂架系统 Boom system		车桥 Axle
	起重能力 Lifting capacity		行驶速度 Driving speed
	吊臂长度 Boom length		爬坡能力 Grade ability
	工作幅度 Radius		轮胎 Tires
	吊臂仰角 Boom angle		支腿 Outriggers
	主臂起升高度 Hoist height with boom		吊钩 Hook block
	固定副臂长度 Fixed jib length		平衡重 Counterweight
	副臂安装角 Jib offset angle		卷扬 Winch
	副臂起升高度 Hoist height with jib		使用第五支腿360°全回转 360° operation of the boom with 5th jack down
	不使用第五支腿侧后方作业 Boom over side or over rear of the crane without 5th jack		

注意事项

Notes

1. 表中额定总起重量值，是在平整的坚固地面上本起重机能够保证的最大总起重量，包括吊钩和吊具的重量，所以为了估算重物重量，必须减去上述的装置重量。
2. 表中的工作幅度为起吊重物离地时起重物到起重机回转轴线的水平距离，是包括起重臂变形量在内的实际值，因而起吊前应考虑起重臂变形量。
3. 只允许在5级(瞬时风速14.1m/s，风压125N/m²)风以下进行作业。
4. 吊重前操作者必须对物体的重量和工作范围了解后选择合适的作业工况，严禁超出表中的数值。幅度及臂长在相邻两个数值之间时，应依据两个数值中较小值确定起重作业。
5. 应按主臂仰角范围作业，即使是空载，也不应使主臂仰角处于范围外，谨防整机倾翻。
6. 表中的主臂长度应要按照每节臂的伸缩要求进行伸出。

1. The total rated loads given in the rated load charts are the maximum lifting capacity when the crane is set up on firm and level ground, which includes the weight of the hook block and slings. The weight of above-mentioned devices should be deducted from the rated lifting load.
2. The working radius shown in the rated load charts is the radius when the load is lifted off the ground, and it is the actual value including loaded boom deflection. Take boom deflection into consideration before beginning a lifting operation.
3. A lifting operation is permissible only when the wind force is below grade 5 (instantaneous wind speed is 14.1 m/s, wind pressure is 125 N/m²).
4. Before beginning lifting operation, the operator should know the weight of the load to be lifted and its working range, and then select proper working conditions. Never operate the crane beyond the limit shown in the chart. Use the lower value from the chart when the boom length or working radius is between the range of values.
5. Observe the boom angle limit. Never operate the crane with the boom angle beyond the recommended limit even if a load is not being carried. Otherwise, the crane will tip.
6. The boom should be extended according to the telescoping code shown by percentage (or digits, which means the percentage of boom sections extended).

主要技术参数表

Table of main technical parameters

类别 Category	项目 Item	单位 Unit	参数 Parameter	
尺寸参数 Dimensions	外形尺寸 (长×宽×高) Dimensions (length×width×height)	mm	14040×2790×3630	
	轴距 Wheel base	mm	1470/4300/1350	
	轮距 (前/后) Track (Front/ Rear)	mm	2304/2079	
	前悬/后悬 Front/ Rear overhang	mm	2376/2398或2389/2398 2376/2398 or 2389/2398	
	前伸/后伸 Front/ Rear extension	mm	2146/0或2133/0 2146/0 or 2133/0	
重量参数 Weight	最大允许总质量 Total vehicle mass in travel configuration	kg	40330	
	轴荷 Axle load	一轴、二轴 1st and 2nd axle	kg	16530
		三轴、四轴 3rd and 4th axle	kg	23800
动力参数 Power	发动机型号 Engine model	—	WD615.334	
	额定功率/转速 Engine rated power/rpm	kW/(r/min)	247/2200	
	最大净功率/转速 Max. net power/rpm	kW/(r/min)	245/2200	
	最大输出扭矩/转速 Max. output torque/rpm	N.m/(r/min)	1350/1100-1600	
行驶参数 Travel	最高车速 Max. travel speed	km/h	90	
	最低稳定车速 Min. stable travel speed	km/h	2.5 ~ 3	
	最小转弯直径 Min. turning diameter	m	24	
	臂头最小转弯直径 Min. turning diameter at boom tip	m	29.44	
	最小离地间隙 Min. ground clearance	mm	250	
	接近角 Approach angle	°	18/10 (前防护) 18/10 (front protective device included)	
	离去角 Departure angle	°	13	
	制动距离 (制动初速度为30km/h) Braking distance (at 30 km/h)	m	≤10	
	最大爬坡能力 Max. grade ability	%	38	
	百公里油耗 Fuel consumption per 100 km	L	35	
噪音 Noise	加速行驶机外噪声 Exterior noise level	dB(A)	≤88	
	驾驶员耳旁噪声 Noise level at seated position	dB(A)	≤90	

主要技术参数表

Table of main technical parameters

类别 Category	项目 Item		单位 Unit	参数 Parameter	
主要性能参数 Main performance	最大额定总起重量 Max. total rated lifting capacity		t	50	
	最小额定工作幅度 Min. rated working radius		m	3	
	转台尾部回转半径 Turning radius at turntable tail		mm	3800	
	最大起重力矩 Max. load moment	基本臂 Base boom		kN.m	2009
		最长主臂 Fully-extended boom		kN.m	933
		最长主臂+副臂 Fully-extended boom + Jib		kN.m	696
	支腿跨距 Outrigger span	纵向 Longitudinal		m	6.1
		横向 Lateral		m	7.1
	起升高度 Hoist height	基本臂 Base boom		m	11.2
		最长主臂 Fully-extended boom		m	43.3
		最长主臂+副臂 Fully-extended boom + Jib		m	59.5
	起重臂长度 Boom length	基本臂 Base boom		m	11.4
		最长主臂 Fully-extended boom		m	43.5
最长主臂+副臂 Fully-extended boom + Jib		m	59.5		
副臂安装角 Jib offset angle			°	0、15、30	
工作速度参数 Working speed	起重臂起臂时间 Boom raising time		s	≤40	
	起重臂全伸时间 Boom fully extending time		s	≤90	
	最大回转速度 Max. slewing speed		r/min	≥2.0	
	支腿收放时间 Outrigger extending and retracting time	水平支腿 Outrigger beam	收 Retracting	s	≤30
			放 Extending	s	≤35
		垂直支腿 Outrigger jack	收 Retracting	s	≤35
			放 Extending	s	≤40
	起升速度 (单绳,第四层,空载) Hoisting speed (single line, 4th layer, no load)	主起升机构 Main winch		m/min	≥130
副起升机构 Auxiliary winch		m/min	≥130		
噪声 Noise	机外辐射 Exterior noise level		dB (A)	≤122	
	司机位置处 Noise level at seated position		dB (A)	≤90	



地址：江苏省徐州市经济技术开发区高新路68号

Add : No. 68, Gaoxin Road, Economic Development

Zone, Xuzhou, Jiangsu Province, China

电话(Tel) : +86-516-83462242/83462350

质量监督电话(Quality Inquiry Tel) : +86-516-87888268

备件电话(Spare Parts Tel) : +86-516-83461542

邮编(Post Code) : 221004

网址(Web) : www.xcmg.com/qizhongji

服务热线 Service Tel

400-110-9999

400-001-5678



本印刷品不属于合同。出于产品不断改进的需要，我们保留对产品型号、参数、配置进行变更的权利，恕不另行通知。图片仅供参考，具体产品以实物为准。图片中产品可能并非标准配置，部分部件可能需要另行购置。办理牌照和上路行驶需遵守当地法规。

This print does not belong to the contract. We reserve the right to modify the design (such as product model, parameters and configuration) without notice for improvement. The pictures are just for reference. The product in the picture may not be standard configuration. Some parts need to be purchased separately. Conform to the local laws for license application and road traveling.