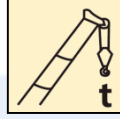
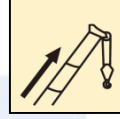


汽车起重机 / Truck Crane

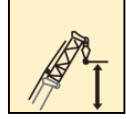
XCT75



75t



48m



74m

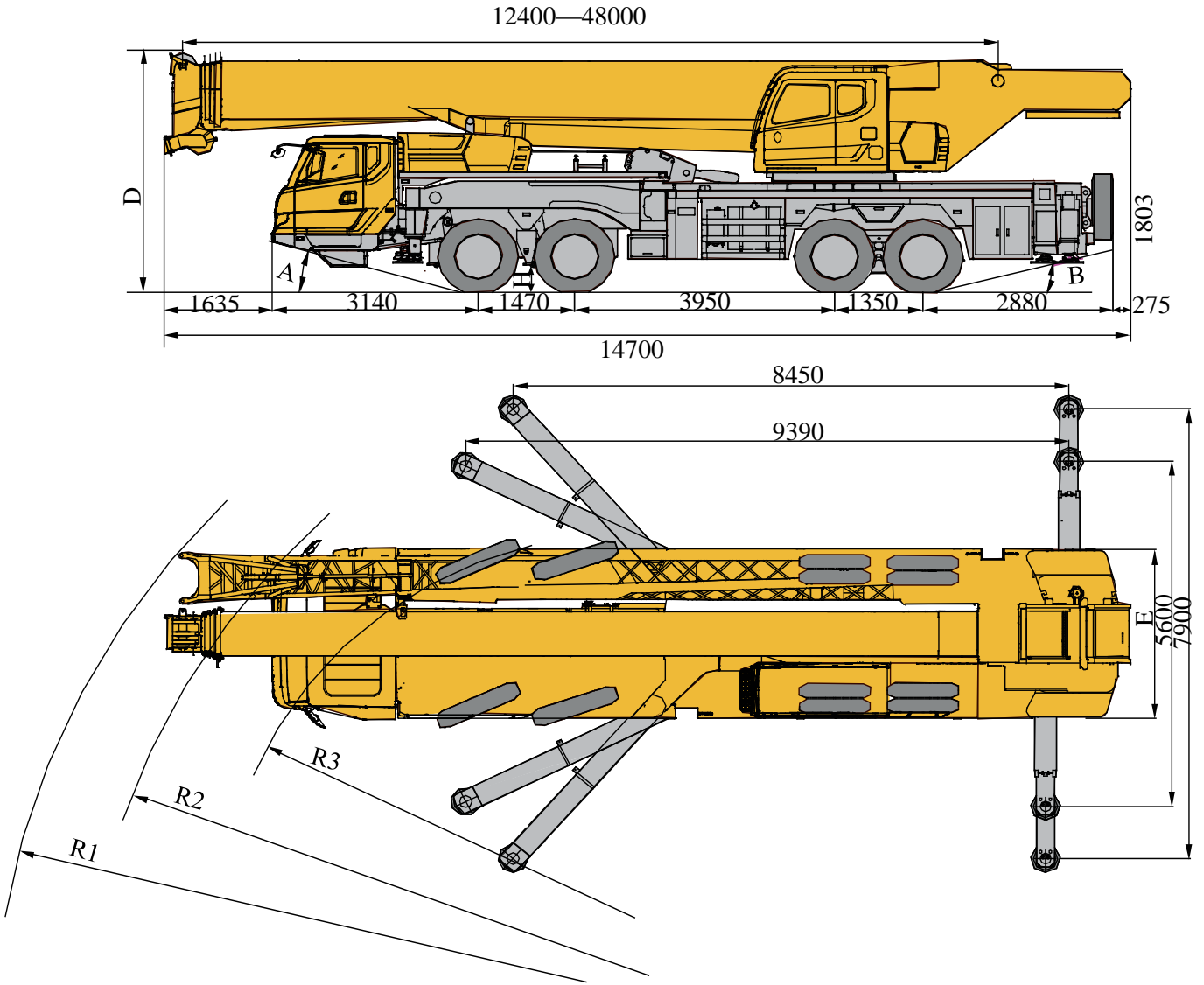


目录

Content

目录 Content	
尺寸参数 Dimensions	3
技术规格 Product Specifications	4-5
重量/作业速度 Weight / Working speeds	6
平衡重 Counterweight	7
臂架组合方案 Boom / Jib combinations	8-9
主臂 Boom	10-12
副臂 Jib	13-14
符号标识 Description of symbols	15
注意事项 Notes	16

尺寸参数 Dimensions





	A	B	D	E	R1	R2	R3	H
12.00R24-20PR	16°	13.5°	3910	2750	14950	14050	12000	305

技术规格

Technical specifications

	底盘
车架	徐工设计、制造，全覆盖式走台板，防扭转箱型结构，高强度钢材制造。
支腿	4支腿，K形布置，后活动支腿采用双级水平支腿，水平伸缩和垂直伸缩由液压控制，底盘两侧装有支腿操纵机构，水平仪、照明灯和调速按钮，支腿油缸均设有单向阀，且垂直支腿带有双向液压锁。 支脚盘尺寸：Φ450mm 最大起重量时支腿反力：730KN
发动机	MC11.36-50，直列六缸水冷电控柴油发动机，中国重汽制造，额定功率268kW/1900rpm，最大扭矩1800Nm/1000-1400rpm，国V排放标准。 燃油箱容积：320L。
变速箱	陕齿手动变速箱，10个前进档，2个倒档。
车桥	徐州美驰高强度车桥，1、2桥转向，3、4桥驱动。
悬挂	前悬挂为钢板弹簧，后悬挂为橡胶悬挂。
轮胎	12个轮胎，1个备胎，1、2桥均装单胎，3、4桥均装双胎。 轮胎规格：12.00R24-20PR★
制动	行车制动：双回路气压制动，作用于所有车轮。 驻车制动：弹簧贮能制动，作用于2、3、4轴车轮。 辅助制动：发动机排气制动和缸内缓速制动。
转向	1、2桥机械转向+液压助力。
驾驶室	豪华驾驶室。配备电动升降器的安全玻璃、可调式座椅、电动调节后视镜、可调节高度及角度方向盘、液晶显示器和收音机等。2公斤灭火器。 标配冷暖空调。
电气系统	直流24伏特，串联12伏特的电池组2个。 发电机：28伏特-80安培。

	臂架系统
主臂	5节，“U”形截面的筒形焊接结构。双缸绳排伸缩机构 主臂长度：12.4m~48m。
臂端单滑轮	单滑轮，安装在主臂顶端用于单股钢丝绳起重作业，起重性能与主臂相同，但最大起重量不超过6.5t。
固定副臂	2节桁架式焊接结构，具有0°、15°、30°三种固定副臂安装角 固定副臂长度：10.5m/17.5m

	上车
结构	徐工设计、制造，高强度钢材制造。
液压系统	底盘发动机驱动变量柱塞泵，用于起升、变幅、伸缩。负载敏感式比例多路换向阀，带有抗冲击阀、防气蚀阀；风冷式液压油散热器； 液压油箱容积：1022L
操纵方式	液控先导操纵系统，由左右2个操纵手柄控制，由液压泵和比例阀进行液压先导式控制起重机的全部动作
主起升机构	液压控制调速，装有双折线绳槽卷筒，由液压马达通过行星齿轮减速器驱动，内置常闭式制动器并带有平衡阀；
回转机构	四点接触球式回转支承，由液压马达驱动行星齿轮回转机构减速器驱动，可连续回转360°；具有动力控制或自由回转的功能，可无级调速；回转杆设有鸣响开关；
变幅机构	单支双作用前置液压变幅油缸，带有平衡阀
操纵室	新型钢制操纵室，装有无视野死角的前景窗，安全玻璃，车窗装有遮阳板，推拉式车门，座椅靠背可倾斜定位，操纵杆安装在座椅两侧的扶手台上；带推拉踏板；前窗顶窗装有雨刮器；标配单冷空调；
安全装置	液压平衡阀；液压溢流阀；液压双向锁；力矩限制器；三圈保护器，防止钢丝绳过放；臂头设置高度限位，防止钢丝绳过卷；三色报警灯；
组合配重	总重15t，有15t、10.5t、6t和1.5t四种组合。

选装配置

平衡重	4.5t
主臂加长节	桁架式焊接结构，9m。
安全装置	风速仪
底盘发动机	1、SC10E360Q5，直列六缸水冷电控柴油发动机，上柴制造，额定功率265kW/1900rpm，最大扭矩1700Nm/1000-1400rpm，国V排放标准。 2、MC11.35-30，直列六缸水冷电控柴油发动机，中国重汽制造，额定功率260kW/1900rpm，最大扭矩1750Nm/1000-1400rpm，国III排放标准。

产品各部件明细如上所述，具体部件明细请参照产品报价单

技术规格

Technical specifications



Chassis

Frame	Designed and manufactured by XCMG, with all covered walking surface, anti-torsion box structure and optimal load-bearing structure design, made of imported high strength steel.
Outrigger	4 outriggers, K-shaped arrangement, rear lateral outrigger are two stage , lateral and vertical outrigger controlled by the hydraulic control. Both sides of the chassis equip-ed with outrigger operating system, lighting and speed buttons; outrigger cylinders equipped with one-way valve, and the vertical outrigger has two-way hydraulic lock. Scale of outrigger float:Φ450 Most force on outrigger:730KN.
Engine	MC11.36-50, in-line six-cylinder water-cooled EFI diesel engine, manufactured by CNHTC, rated power 268kW /1900rpm, max torque 1800Nm / 1000-1400rpm, the national V emission standards.
Gearbox	Mechanical transmission manufactured by Fast, with 10 forw-ard gears and 2 reverse gears available
Alxes	High strength axle with reliable performance, manufactured by xuzhou Meritor,1&2 alxes sreering,3&4 alxes driving.
Suspension	Front suspension is steel spring,rear suspension is rubber spring.
Tires	12 tires and 1 spare tire, 1&2 axles are equipped with single tire,3&4 axles are equipped with double tire. Tire specifications:12.00R24-20PR★
Brakes	Service brake: double-circuit air pressure brake, acting on all wheels. Parking brake: spring energy brake, acting on wheels of 2&3&4 axles. Auxiliary brake: engine retarded brake,
Steer	1&2 alxes sreering, mechanical steer with hydraulic assist
Cab	Luxurious cab,equiped with electronic control glass,seat can be adjusted, electronic control mirror, LCD and CD player,2 kilograms fire extinguisher. Cold-warm air-condition is equipped.
Electric	24V(DC),2 battery in series. Generator:24V,80A

Boom system

Boom	5-section, U-shape cross section, welding str-ucture Boom length:12.4m ~ 48m.
Boom Single top	Boom single top is installed on the top of boom and used for lifting operation of single line wire rope. The lifting performance of boom single top is the same with boom, but max. load capacity cannot exceed 6500kg.
Jib	It is stowed beside the boom, consisted of a connecting bracket, a rotating bracket and two lattice bi-fold jibs with jib offset angle: 0°,15°,30 Jib length 10.5m/17.5m.



Superstructure

Frame	Designed and manufactured by XCMG; made of high-strength steel
Hydraulic system	The variable plunger pump driven by engine is used to control hoisting, elevating and telescoping; and the gear pump is used for slewing operations. Load sensitive proportional multi-way change valve, Air-cooled hydraulic oil radiator; Volume of hydraulic oil tank: 1000L
Operating mode	Hydraulic pilot control of all crane movements using two control levers. All crane movements are controlled by hydraulic pump and proportional valve.
Main winch system	Hydraulic controlled speed regulation, groove drum is equipped, driven by hydraulic motor through planetary gear reducer, and built-in normally closed brake and counterbalance valve are available.
Auxiliary winch system	Hydraulic controlled speed regulation, groove drum is equipped, driven by hydraulic motor through planetary gear reducer, and built-in normally closed brake and counterbalance valve are available.
Slewing system	Single-row four-point contact ball type with external slewing ring, planetary gear slewing reducer is driven by hydraulic motor which can slew 360° continuously. It has functions of power control or free slewing and stepless speed regulation is available.
Elevating System	A single-cylinder with balance valve equipped is used for front support elevation.
Operator's cab	New fully-enclosed steel tiltable cab with a full-view front window. Safety glass and sun shield are used for windows. Wipers are fitted for the windshield and roof window. The cab features a new ergonomic seat design with backrest adjustment and armrests with joysticks fitted. A sliding door and a pull-out step are available. Air conditioner are available. Fire extinguisher 2kg
Safety devices	Hydraulic balance valve; Hydraulic relief valve; Double-way hydraulic valve; LMI; spring aligning device for joystick; Lowering limiter for preventing wire rope from over-releasing; Anti-two block at boom head for preventing wire rope from over-winding; tri-color warning lamp.
Combined counterweight	Total weight is 15 t. Counterweight configurations: 15 t,10 .5t,6t,1.5t.

Additional equipment

counterweight	The optional weight is 4.5 t.
Boom extension	Lattice welding structure 9m.
Safety devices	Anemometer, winch monitor device; level gauge.
Engine	1、 SC10E340Q5, in-line six-cylinder water-cooled EFI diesel engine, manufactured by SDEC, rated power 251kW /1900rpm, max torque 1600Nm / 1100-1500rpm, the national V emission standards. 2、 MC11.35-30, in-line six-cylinder water-cooled EFI diesel engine, manufactured by CNHTC, rated power 260kW /1900rpm, max torque 1750Nm / 1000-1400rpm, the national V emission standards..

Product parts list is as mentioned above, please refer to the product quotation for specific parts.

重量 Weight



车桥 Axle	1	2	3	4	总重量 Total weight
t	10	10	13	13	46





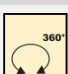


吊钩 Hook	倍率 No. of lines	吊钩重量 Weight kg	吊钩尺寸 Dimensions mm	备注 Remarks
80t	12	700	1735×554×520	单钩 Single hook , 标配 Standard
55t	8	470	1600×520×370	单钩 Single hook , 选配 Optional
7t	1	210	717×370×370	单钩 Single hook , 标配 Standard

作业速度 Working speeds

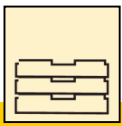
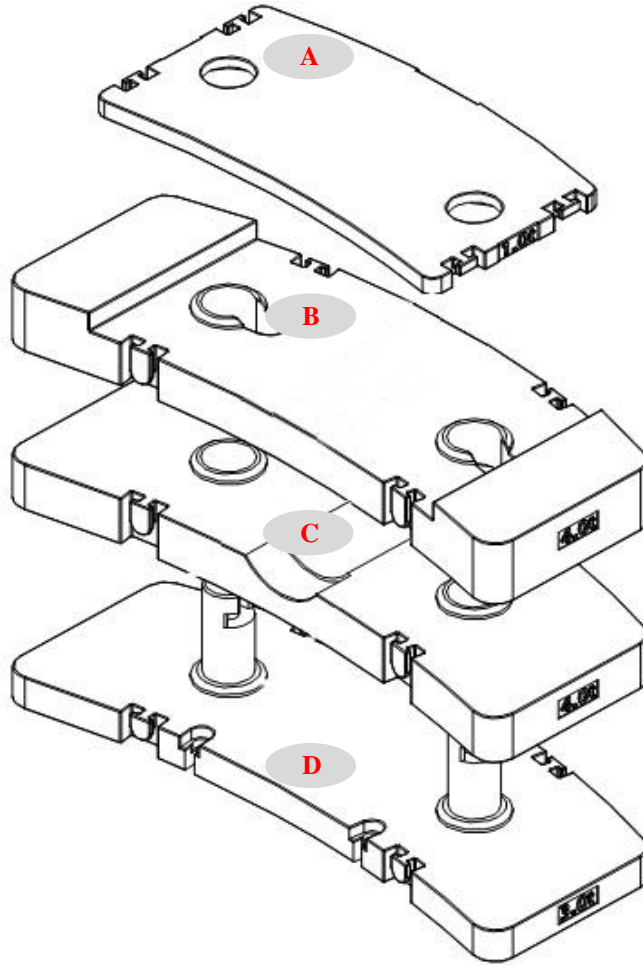


		
12.00R24	1 ~ 90	45%



作业机构 Drive	作业速度 Working speed	最大单绳拉力 Max. single line pull	钢丝绳直径/长度 Rope diameter/ length
	0-145 m/min, 单绳, 第四层 m/min, single line, 4th layer	6.54t	20 mm/240m
	0-90 m/min, 单绳, 第四层 m/min, single line, 4th layer	6.5t	20 mm/180 m
	0-2 r/min		
	从-2°抬起至81°约55s Approx. 55s for boom elevation from -2 ° to 81°		
	从12.4m伸出至48m约110s Approx. 500s for boom extension from 12.4m to 48m		

平衡重 Counterweight

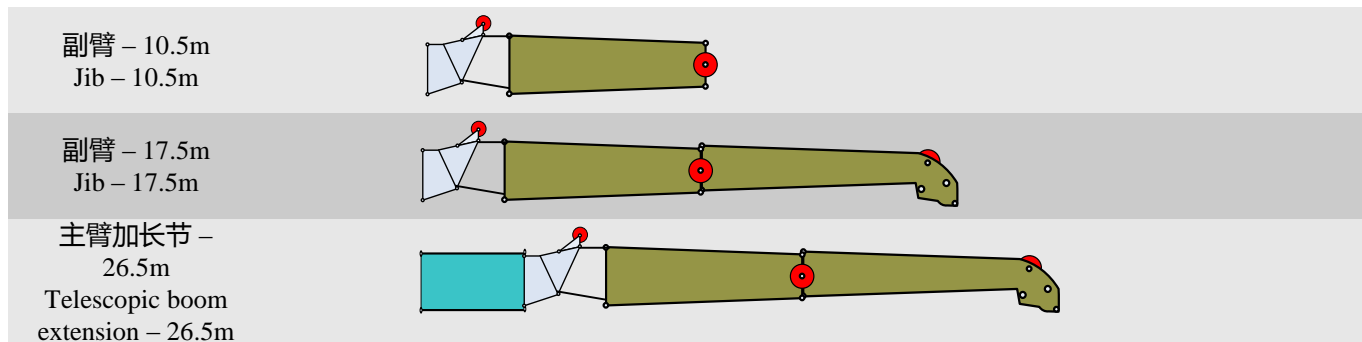


平衡重 Counterweight	A	B	C	D
尺寸 (长×宽×高) m Size (L×W×H) m	1890×1300 ×110	2700×1490×300	2700×1490×270	2700×1490×620
重量 t Weight t	1.5	4.5	4.5	4.5

工况模式 Working mode	1.5t	6t	10.5t	15t
组合形式 Combinations	A	A+D	A+C+D	A+B+C+D

臂架组合方案

Boom / Jib combinations



部件 Component	结构形式 Structure	尺寸 (长×宽×高) mm Size (L×W×H) mm	重量 kg Weight kg
连接架 Connection bracket		1910×740×1050	221
主臂加长节 Telescopic boom extension		9000×830×1400	600
一节副臂总成 First jib section assembly		9340×620×900	567
二节副臂总成 Second jib section assembly		6520×300×430	259

臂架组合方案

Boom / Jib combinations



主臂
Telescopic boom

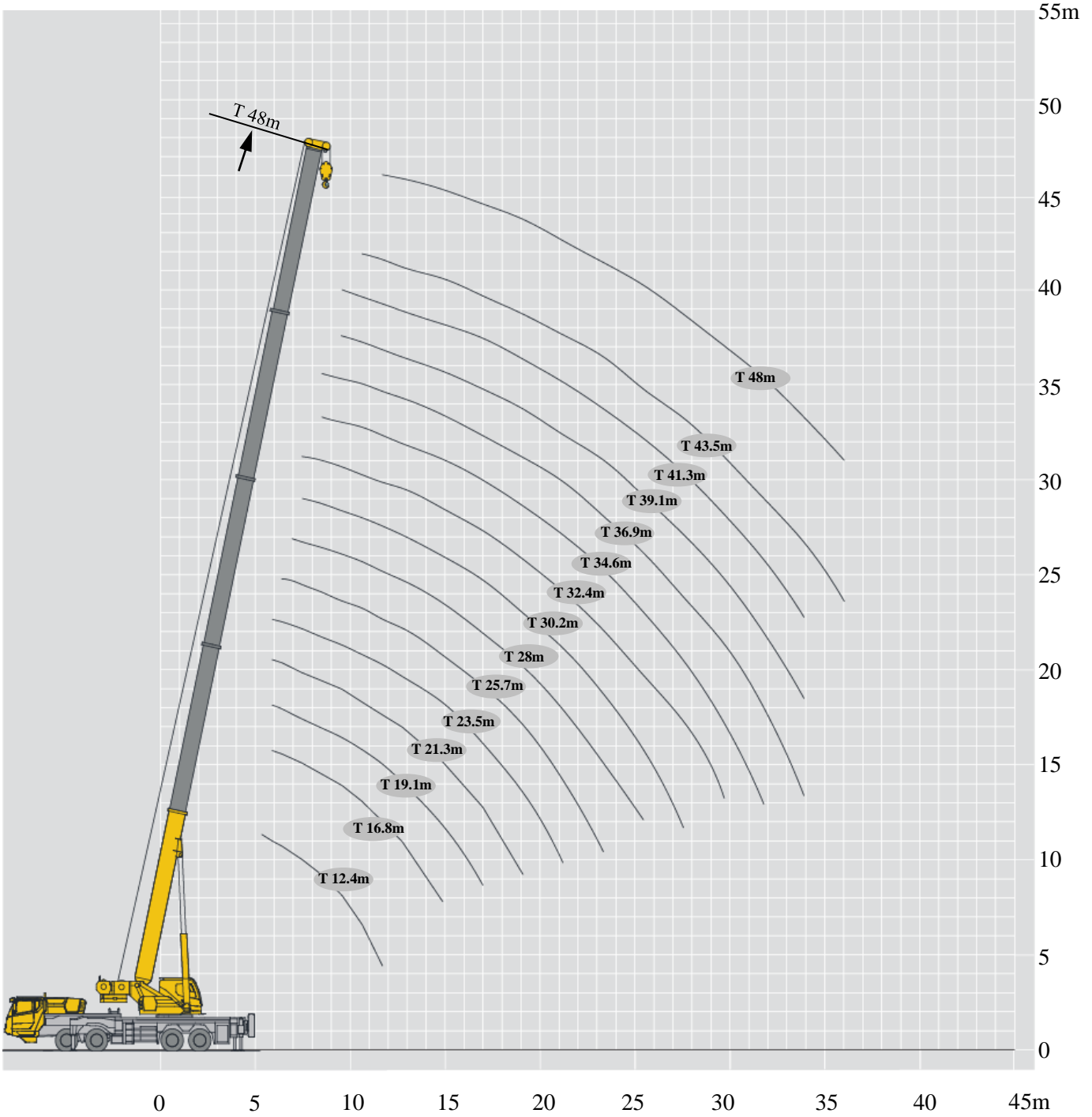
T : 12.4~48m

副臂
Jib

T : 48m
J : 10.5~17.5 m

主臂加长节
Telescopic boom extension

T : 48m
I : 9m
J : 10.5~17.5m



起重性能表

Lifting capacities

T 12.4~48m


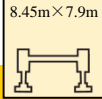

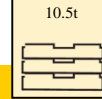
	12.4-48m		8.45m×7.9m		360°		1.5t									
	12.4m	16.8m	19.1m	21.3m	23.5m	25.7m	28m	30.2m	32.4m	34.6m	36.9m	39.1m	41.3 m	43.5	48m	
3	75															3
3.5	75															3.5
4	75	63.3	37.1	46.0												4
5	62	58	34.5	45.0	36.5	29.5	35.0									5
6	49.3	48.6	32.3	40.0	34.5	27.2	34.7	32.4	23.8							6
7	34	33.4	30.5	33.0	32.6	25.1	31.9	29.7	22.2	25.4						7
8	25.3	24.8	27.6	24.4	26.8	23.6	26.2	27.9	20.9	23.3	20.5	14.3	19.6			8
9	19.7	19.3	21.8	18.9	21.1	22.4	20.5	22.1	19.6	21.5	19.6	13.8	18.2	13.1		9
10		15.4	17.8	15.1	17.1	18.7	16.6	18.0	18.4	17.5	17.8	13.2	17.2	13.0	12.7	10
12		10.2	12.5	9.9	11.9	13.4	11.4	12.8	13.9	12.2	13.3	12.1	12.8	12.5	11.7	12
14			9.1	6.7	8.5	9.9	8.0	9.3	10.4	8.8	9.8	10.7	9.4	10.2	9.7	14
16				4.5	6.2	7.6	5.8	7.0	8.0	6.5	7.5	8.3	7.0	7.8	7.4	16
18					4.6	5.9	4.1	5.3	6.3	4.9	5.8	6.6	5.4	6.1	5.7	18
20						4.6	2.9	4.1	5.0	3.6	4.5	5.3	4.1	4.8	4.5	20
22							2.0	3.1	4.0	2.7	3.6	4.3	3.2	3.9	3.5	22
24								2.3	3.3	1.9	2.8	3.5	2.4	3.1	2.7	24
26									2.6	1.3	2.1	2.8	1.7	2.4	2.0	26
28										0.8	1.6	2.3	1.2	1.9	1.5	28
30											1.1	1.8	0.8	1.2	1.0	30


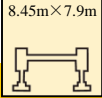

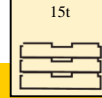
	12.4-48m		8.45m×7.9m		360°		6t									
	12.4m	16.8m	19.1m	21.3m	23.5m	25.7m	28m	30.2m	32.4m	34.6m	36.9m	39.1m	41.3 m	43.5	48m	
3	75															3
3.5	75															3.5
4	75	63.3	37.1	46.0												4
5	62	58	34.5	45.0	36.5	29.5	35.0									5
6	54	50	32.3	40.0	34.5	27.2	34.7	32.4	23.8							6
7	41.5	40.8	30.5	38.0	32.6	25.1	31.9	29.7	22.2	25.4						7
8	31.2	30.6	28.8	30.2	31.0	23.6	29.5	27.9	20.9	23.3	20.5	14.3	19.6			8
9	24.5	24	26.6	23.7	25.9	22.4	25.3	26.7	19.6	21.9	19.6	13.8	18.2	13.1		9
10		19.4	21.9	19.1	21.2	21.2	20.6	22.1	18.4	20.5	17.8	13.2	17.2	13.0	12.7	10
12		13.4	15.7	13.1	15.0	16.5	14.5	15.9	16.2	15.4	16.0	12.1	15.9	12.5	11.7	12
14			11.8	9.4	11.2	12.6	10.7	12.0	13.0	11.5	12.5	10.7	12.0	12.0	11.4	14
16				6.7	8.5	9.9	8.1	9.3	10.3	8.8	9.8	9.6	9.4	10.1	9.7	16
18					6.5	7.9	6.1	7.3	8.3	6.8	7.8	8.5	7.3	8.1	7.7	18
20						6.4	4.6	5.8	6.8	5.4	6.3	7.0	5.8	6.6	6.2	20
22							3.5	4.6	5.6	4.2	5.1	5.8	4.7	5.4	5.0	22
24								3.7	4.6	3.3	4.1	4.9	3.7	4.4	4.1	24
26									3.8	2.5	3.4	4.1	3.0	3.7	3.3	26
28										1.9	2.7	3.4	2.3	3.0	2.6	28
30											2.2	2.9	1.8	2.4	2.1	30
32												2.4	1.3	2.0	1.6	32
34														1.6	1.2	34
36															0.8	36

起重性能表

Lifting capacities

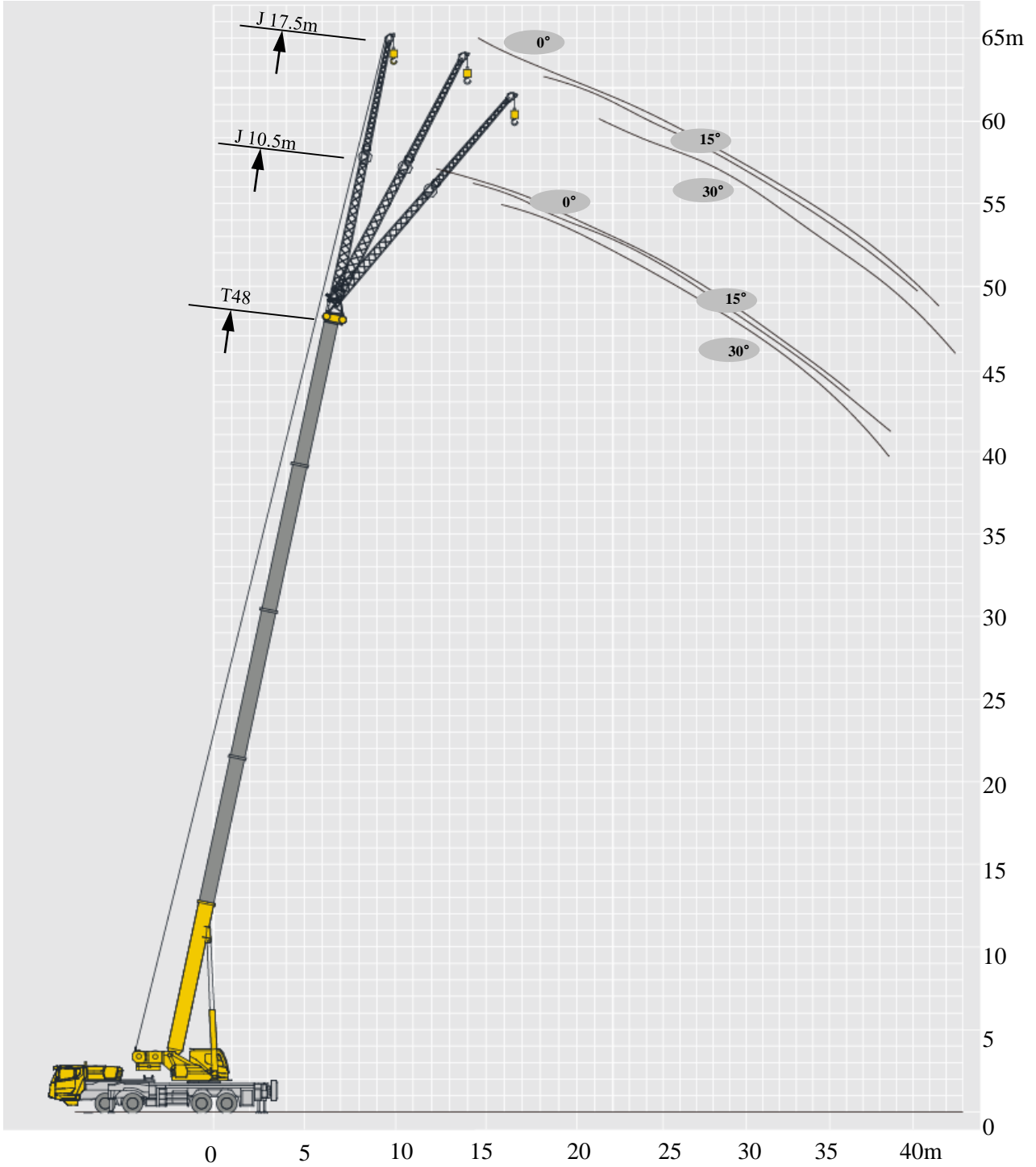
T 12.4~48m

																							
		12.4m	16.8m	19.1m	21.3m	23.5m	25.7m	28m	30.2m	32.4m	34.6m	36.9m	39.1m	41.3m	43.5	48m							
3	75																	3					
3.5	75																	3.5					
4	75	63.3	37.1	46.0														4					
5	62	58	34.5	45.0	36.5	29.5	35.0											5					
6	54	50	32.3	40.0	34.5	27.2	34.7	32.4	23.8									6					
7	45	44	30.5	38.0	32.6	25.1	31.9	29.7	22.2	25.4								7					
8	36.4	35.8	28.8	35.5	31.0	23.6	29.5	27.9	20.9	23.3	20.5	14.3	19.6					8					
9	28.8	28.3	27.4	28.0	29.6	22.4	27.5	26.7	19.6	21.9	19.6	13.8	18.2	13.1				9					
10		23.1	24.8	22.7	24.8	21.2	24.3	25.3	18.4	20.5	17.8	13.2	17.2	13.0	12.7			10					
12		16.2	18.5	15.9	17.8	19.2	17.3	18.7	16.2	18.2	16.0	12.1	16.6	12.5	11.7			12					
14			14.1	11.7	13.4	14.9	13.0	14.3	14.4	13.8	14.3	10.7	14.3	12.0	11.4			14					
16				8.8	10.5	11.8	10.0	11.2	12.2	10.8	11.7	9.6	11.3	10.6	10.3			16					
18					8.3	9.6	7.9	9	10	8.6	9.5	8.5	9.1	9.5	9.1			18					
20						7.9	6.2	7.4	8.3	7.0	7.8	7.7	7.4	8.1	7.7			20					
22							4.9	6.1	7.0	5.6	6.5	7.06	6.1	6.8	6.4			22					
24								5.0	5.9	4.6	5.4	6.2	5	5.7	5.4			24					
26									5.0	3.7	4.5	5.3	4.1	4.8	4.5			26					
28										2.9	3.8	4.5	3.4	4.1	3.7			28					
30											3.2	3.9	2.8	3.4	3.1			30					
32												3.3	2.2	2.9	2.5			32					
34														2.4	2.1			34					
36															1.7			36					

																							
		12.4m	16.8m	19.1m	21.3m	23.5m	25.7m	28m	30.2m	32.4m	34.6m	36.9m	39.1m	41.3m	43.5	48m							
3	75																	3					
3.5	75																	3.5					
4	75	63.3	37.1	46.0														4					
5	62	58	34.5	45.0	36.5	29.5	35.0											5					
6	54	50	32.3	40.0	34.5	27.2	34.7	32.4	23.8									6					
7	45	44	30.5	38.0	32.6	25.1	31.9	29.7	22.2	25.4								7					
8	38	38	28.8	36.4	31.0	23.6	29.5	27.9	20.9	23.3	20.5	14.3	19.6					8					
9	32	32	27.4	32.3	29.6	22.4	27.5	26.7	19.6	21.9	19.6	13.8	18.2	13.1				9					
10		26.7	24.8	26.4	27.8	21.2	25.6	25.3	18.4	20.5	17.8	13.2	17.2	13.0	12.7			10					
12		19	21.3	18.7	20.6	19.2	20.1	21.5	16.2	18.3	16.0	12.1	16.6	12.5	11.7			12					
14			16.3	14.0	15.7	17.1	15.3	16.5	14.4	16.0	14.3	10.7	14.4	12.0	11.4			14					
16				10.7	12.4	13.7	11.9	13.1	12.9	12.7	12.9	9.6	12.6	10.6	10.3			16					
18					10.0	11.3	9.5	10.7	11.64	10.3	11.2	8.5	10.7	9.5	9.1			18					
20						9.4	7.7	8.8	9.8	8.4	9.3	7.7	8.9	8.5	8.2			20					
22							6.3	7.4	8.3	6.9	7.8	7.06	7.4	7.8	7.4			22					
24								6.2	7.1	5.8	6.6	6.4	6.2	6.9	6.5			24					
26										6.1	4.8	5.6	5.9	5.3	5.6			26					
28											4.0	4.8	5.4	4.4	5.1	4.7		28					
30												4.1	4.8	3.7	4.4	4.0		30					
32													4.2	3.1	3.8	3.4		32					
34															3.3	2.9		34					
36																2.5		36					

起升高度曲线图 Lifting heights

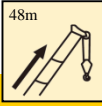

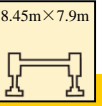
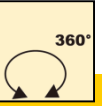
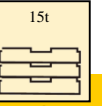
副臂
Jib

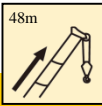
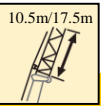
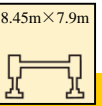

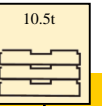


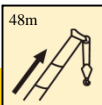
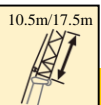
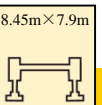

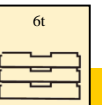
起重性能表

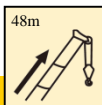
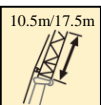
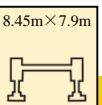
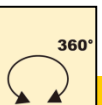
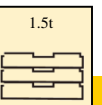
Lifting capacities

J 10.5m/17.5m

	    						
	10.5m			17.5m			
	0°	15°	30°	0°	15°	30°	
80	6.5	4.6	4.4	4.0	2.5	1.8	80
78	6.3	4.5	4.3	3.7	2.2	1.7	78
75	6.0	4.1	3.8	3.2	2.0	1.6	75
72	5.2	3.8	3.6	2.7	1.8	1.5	72
70	4.8	3.6	3.5	2.5	1.7	1.5	70
65	4.0	3.3	3.1	1.9	1.5	1.3	65
60	3.2	2.9	2.6	1.7	1.4	1.3	60
55	2.4	2.2	2.1	1.4	1.3	1.2	55
50	1.5	1.4	1.4				50

	    						
	10.5m			17.5m			
	0°	15°	30°	0°	15°	30°	
80	6.5	4.6	4.4	4.0	2.5	1.8	80
78	6.3	4.5	4.3	3.7	2.2	1.7	78
75	6.0	4.1	3.8	3.2	2.0	1.6	75
72	5.2	3.8	3.6	2.7	1.8	1.5	72
70	4.8	3.6	3.5	2.5	1.7	1.5	70
65	3.7	3.3	3.1	1.9	1.5	1.3	65
60	2.5	2.3	2.2	1.7	1.4	1.3	60
55	1.7	1.6	1.5	1.1	1.0	0.9	55
50	1.0	0.9	0.8				50

	    						
	10.5m			17.5m			
	0°	15°	30°	0°	15°	30°	
80	6.5	4.6	4.4	4.0	2.5	1.8	80
78	6.3	4.5	4.3	3.7	2.2	1.7	78
75	6.0	4.1	3.8	3.2	2.0	1.6	75
72	5.2	3.8	3.6	2.7	1.8	1.5	72
70	4.5	3.6	3.5	2.5	1.7	1.5	70
65	2.8	2.6	2.4	1.9	1.5	1.3	65
60	1.8	1.7	1.6	1.1	1.0	0.9	60
55	0.9	0.8	0.8				55

	    						
	10.5m			17.5m			
	0°	15°	30°	0°	15°	30°	
80	6.5	4.6	4.4	4.0	2.5	1.8	80
78	6.3	4.5	4.3	3.7	2.2	1.7	78
75	5.9	4.1	3.8	3.2	2.0	1.6	75
72	4.2	3.6	3.2	2.7	1.8	1.5	72
70	3.4	2.9	2.7	2.5	1.7	1.5	70
65	1.9	1.7	1.6	1.3	1.0	0.9	65
60	0.9	0.8	0.7				60

符号标识

Description of symbols

常规标识

General symbols

	上车 Superstructure		底盘 Chassis
	起重能力 lifting capacity		车桥 Axle
	吊臂长度 Boom length		行驶速度 Driving speed
	工作幅度 Radius		爬坡能力 Grade ability
	吊臂仰角 Boom angle		轮胎 Tires
	主臂起升高度 Hoist height with Boom		支腿 Outriggers
	固定副臂长度 Fixed jib length		吊钩 Hook block
	副臂安装角 Jib offset angle		平衡重 Counterweight
	副臂起升高度 Hoist height with jib		卷扬 Winch
	主臂加长节 Boom extension		360°全回转 360° rotation
	带载行驶 Travel with load		

注意事项

Notes

1. 表中额定总起重量值，是在平整的坚固地面上本起重机能够保证的最大总起重量，包括吊钩和吊具的重量，所以为了估算重物重量，必须减去上述的装置重量。
2. 表中的工作幅度为起吊重物离地时起重物到起重机回转轴线的水平距离，是包括起重臂变形量在内的实际值，因而起吊前应考虑起重臂变形量。
3. 只允许在5级(瞬时风速14.1m/s，风压125N/m²)风以下进行作业。
4. 吊重前操作者必须对物体的重量和工作范围了解后选择合适的作业工况，严禁超出表中的数值。幅度及臂长在相邻两个数值之间时，应依据两个数值中较小值确定起重作业。
5. 应按主臂仰角范围作业，即使是空载，也不应使主臂仰角处于范围外，谨防整机倾翻。
6. 表中的主臂长度应要按照每节臂的伸缩要求进行伸出。

1. The total rated loads given in the rated load charts are the maximum lifting capacity when the crane is set up on firm and level ground, which includes the weight of the hook block and slings. The weight of above-mentioned devices should be deducted to correctly calculate the load weight.
2. The working radius shown in the rated load charts is the radius when the load is lifted off the ground, and it is the actual value including loaded boom deflection.
3. A lifting operation is permissible only when the wind force is below grade 5 (instantaneous wind speed is 14.1 m/s, wind pressure is 125 N/m²).
4. Before beginning lifting operation, the operator should know the weight of the load to be lifted and its working range, and then select proper working conditions. Never operate the crane beyond the limit shown in the chart. Use the lower value from the chart when the boom length or working radius is between the range of values.
5. Observe the boom angle limit. Never operate the crane with the boom angle beyond the recommended limit even if a load is not being carried. Otherwise, the crane will tip.
6. The boom length given in the rated load charts should accord with the telescoping code of boom sections .



地址：中国江苏徐州市铜山路165号

Add : No.165 Tongshan Road Xuzhou Jiangsu China

电话(Tel) : +86-516-83462242/83462350

质量监督电话(Quality Inquiry Tel) : +86-516-87888268

备件电话(Spare Parts Tel) : +86-516-83461542

邮编(Post Code) : 221004

网址(Web) : www.xcmg.com/qizhongji

服务热线 Service Tel

400-110-9999

400-001-5678



本印刷品不属于合同。出于产品不断改进的需要，我们保留对产品型号、参数、配置进行变更的权利，恕不另行通知。图片仅供参考，具体产品以实物为准。图片中产品可能并非标准配置，部分部件可能需要另行购置。办理牌照和上路行驶需遵守当地法规。

This print does not belong to the contract. We reserve the right to modify the design (such as product model, parameters and configuration) without notice for improvement. The pictures are just for reference. The product in the picture may not be standard configuration. Some parts need to be purchased separately. Conform to the local laws for license application and road traveling.