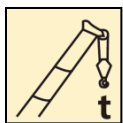


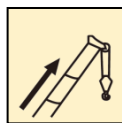
XCT100 汽车起重机 / Truck Crane

技术规格书

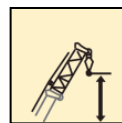
Technical specifications



100 t



64 m



92.6 m

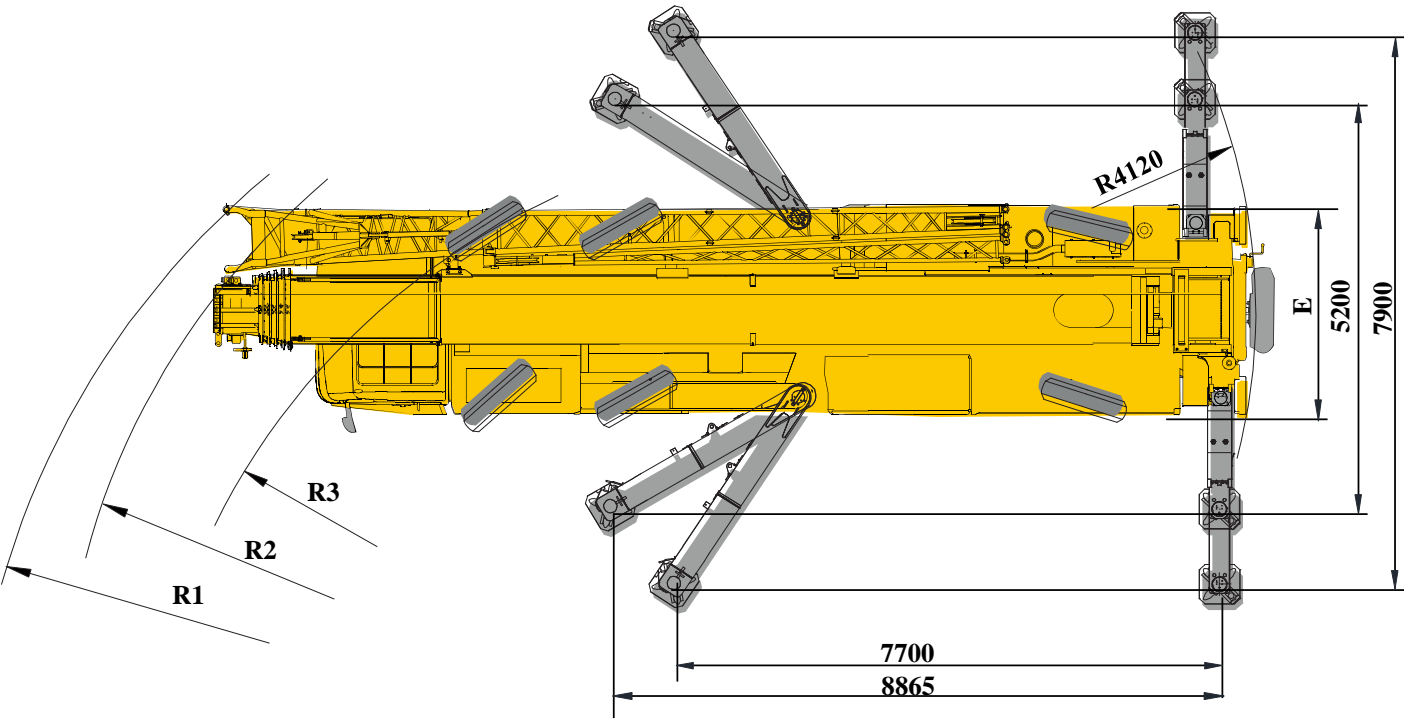
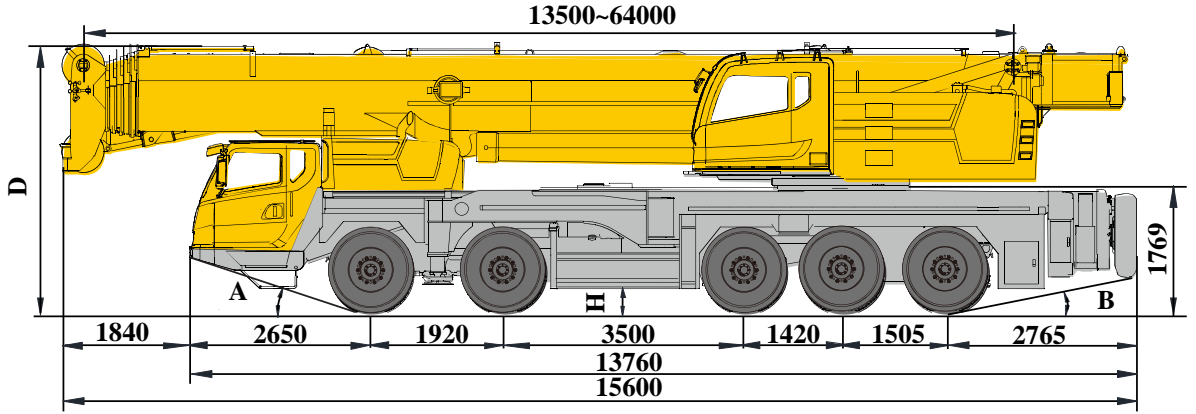


目录

Content

目录 Content	
尺寸参数 Dimensions	3
技术规格 Product Specifications	4-6
重量/作业速度 Weight / Working speeds	7
平衡重 Counterweight	8
运输部件尺寸 Transportation components dimension	9
臂架组合方案 Boom / Jib combinations	10-11
主臂 Boom	12-16
副臂 Jib	17-19
主臂加长节 Telescopic boom extension	20-21
符号标识 Description of symbols	23
主要技术参数表 Table of Main Technical Parameters	24-25
注意事项 Notes	26

尺寸参数 Dimensions



	A	B	D	E	R1	R2	R3	H
12.00R24-20PR*	18°	13°	3870	3000	14300	13400	11500	326

技术规格

Technical specifications



底盘

车架	徐工设计、制造，全覆盖式走台板，防扭转箱型结构，高强度钢材制造。
支腿	4支腿，K形布置，采用双级水平支腿，水平伸缩和垂直伸缩由液压控制，底盘两侧装有电控操纵控制台，控制台板装有水平仪、照明灯和调速按钮，支腿油缸均设有单向阀，且垂直支腿带有双向液压锁。 支脚盘尺寸：473mm×608mm 最大起重量时支腿反力：872KN
发动机	WP12.430E50，直列六缸水冷电控柴油发动机，潍柴制造，额定功率316kW/1900rpm，最大扭矩2060Nm/1000-1400rpm，国V排放标准。 燃油箱容积：360L。
变速箱	美国艾利逊自动变速箱或双特自动变速箱，6个前进档，1个倒档。
分动箱	凯斯兰分动箱或株齿分动箱，带高低档，带差速锁。
车桥	高强度桥，四桥驱动：10×8。
悬挂	前悬架采用板簧平衡悬架，后悬架采用双纵臂板簧平衡悬架结构。
轮胎	14个轮胎，1个备胎，1,2,5桥单胎，3,4桥双胎。 轮胎规格：12.00R24-20PR*
制动	行车制动：双回路气压制动，作用于所有车轮。 驻车制动：弹簧贮能制动，作用于2-5轴车轮。 辅助制动：发动机排气制动和缓速制动。
转向	1、2桥机械转向+液压助力，5桥液控随动转向
驾驶室	新型复合结构全宽驾驶室，全封闭、装备豪华舒适；配置大视野的前挡风安全玻璃、后视镜，电控洗涤器，电子门窗升降器，带有除霜风挡的室内空气加热器，冷暖空调，收放音机等；主驾采用空气悬浮座椅，副驾采用简易卧铺；
电气系统	直流24伏特，串联12伏特的电池组2个。 发电机：28伏特-80安培。



上车

结构	徐工设计、制造，高强度钢材制造。
发动机	WP6G240E330，直列六缸水冷高压共轨柴油发动机，潍柴制造，额定功率176kW/2300rpm，最大扭矩860Nm/1200-1700rpm，国III排放标准； 燃油箱容积：280L。
液压系统	上车发动机驱动变量柱塞泵和齿轮泵用于起升、变幅、伸缩、回转；电比例先导液压油控制的负荷敏感式比例多路换向阀； 液压油箱有效容积：1100L
操纵方式	电比例先导操纵，由左右2个操纵手柄控制采用PLC集成智能控制技术，CAN-BUS总线的控制网络，除常规控制功能外，还具有系统实时监测、故障自动诊断、智能臂架控制、单缸插销控制
主起升机构	液压控制调速，装有绳槽卷筒，由液压马达通过行星齿轮减速器驱动，内置常闭式制动器并带有平衡阀。
回转机构	单排四点接触球外齿式回转支承，由液压马达驱动行星齿轮驱动回转减速机，可连续回转360°；具有动力控制或自由回转的功能，可无级调速。
变幅机构	单变幅油缸，带有自补偿功能的电比例控制平衡阀。
操纵室	新型钢制操纵室，装有无视野死角的前景窗，安全玻璃，车窗装有遮阳板，推拉式车门，操纵员座椅靠背可倾斜定位，操纵杆安装在座椅两侧的扶手上。带推拉踏板，方便人员进出。前窗、顶窗装有雨刮器。操纵室内采用人机交互系统控制面板，操纵室可向上翻转约20°，标配冷暖空调。
安全装置	液压平衡阀；液压溢流阀；液压双向锁；力矩限制器；操纵杆弹簧式回中系统；三圈保护器，防止钢丝绳过放；臂头设置高度限位，防止钢丝绳过卷；风速仪
组合配重	总重40t，有0t、12t、19t、30t和40t共五种组合方式。

技术规格

Technical specifications



臂架系统

主臂	6节，“U”形截面的筒形焊接结构。单缸插销伸缩机构 主臂长度：13.5m~64m。
臂端单滑轮	单滑轮，安装在主臂顶端用于单股钢丝绳起重作业，起重性能与主臂相同，但最大起重量不超过7t。
固定副臂	两节侧置挂接桁架结构副臂，具有0°、15°、30°三种固定副臂安装角，收存在主臂旁。 固定副臂长度：10.6m/18.1m

选装配置

主臂加长节	选装2节7m主臂加长节
独立臂头	桁架式焊接结构，固定角度。 独立臂头长度：2.9m，
上车发动机	OM906LA.E3A/2，直列六缸水冷电控柴油发动机，戴姆勒制造，额定功率190kW/2200rpm，最大扭矩1000N.m/1200-1600rpm，国III排放标准。
底盘发动机	西安康明斯ISM11E5 440，直列六缸柴油发动机，额定功率/转速：324kw/1900rpm 最大输出扭矩/转速：2080N.m/1200rpm，国V排放标准。
底盘发动机	WP12.430N，直列六缸水冷电控柴油发动机，潍柴动力，额定功率316kW/1900rpm，最大扭矩2060Nm/1000-1400rpm，国III排放标准。
无线遥控装置	可对起重机配重挂接动作进行远程操作，提高操作的方便性及安全性。

产品各部件明细如上所述，具体部件明细请参照产品报价单




Chassis

Frame	Designed and manufactured by XCMG, with all covered walking surface, anti-torsion box structure and optimal load-bearing structure design, made of imported high strength steel.
Outrigger	4 outriggers, K-shaped arrangement, lateral and vertical outrigger controlled by the hydraulic control. Both sides of the chassis equipped with electronic control console, the console installed with luminous level, lighting and speed buttons; outrigger cylinders equipped with one-way valve, and the vertical outrigger has two-way hydraulic lock. Float dimension: 473mm×608mm Reaction force of outrigger at max. lifting load:872KN
Engine	WP12.430E50, in-line six-cylinder water-cooled EFI diesel engine, manufactured by WEICHAI POWER, rated power 316kW /1900rpm, max. torque 2060N.m / 1000-1400rpm, the national V emission standards. Fuel tank capacity : 360L
Transmission	Automatic transmission made by ALLISON American or Xi'an FC Intelligence Transmission Co., Ltd. , 6 forward gears and 1 reverse gears.
Transfer case	High performance transfer box made by KESSLER Germany or ZHUZHOU GEAR, with high and low gear ,with differential lock.
Alxes	High-strength axles, four axles for driving: 10×8.
Suspension	Leaf-spring balance suspension is used for front axles; Leaf-spring balance suspension with double longitudinal arms is used for rear axles.
Tires	14 tires and 1 spare tire; Tire specifications:12.00R24-20PR*
Brakes	Service brake: double-circuit air pressure brake, acting on all wheels. Parking brake: spring energy brake, acting on wheels of 2-5 axles. Auxiliary brake: engine retarded brake.
Steering system	1st and 2nd axles are mechanically steered plus fifth axial hydraulic servo
Cab	New full-dimension enclosed cab, luxury and comfort. It is designed to be leakproof, anti-corrosive and shockproof. It is equipped with a windshield offering outstanding visibility, rear mirrors, electric control washer, electronic lifters of doors and windows, indoor air humidifier with windscreen defroster, air conditioner, radio cassette player, etc.
Electric	24V DC, negative ground, 2 batteries.


技术规格

Technical specifications

	Superstructure
Frame	Designed and manufactured by XCMG; Full-covered walking platform, made of high-strength steel
Engine	WP6G240E330, Inline six-cylinder water-cooled and high pressure common rail diesel engine, manufactured by Weichai, rated power 176kW / 2300rpm, the maximum torque of 860Nm / 1200-1700rpm, state III emission standards; Fuel tank capacity : 280L.
Hydraulic system	Hydraulic pump: variable pump and gear pump driven by superstructure engine, used for hoisting, elevating, telescoping and slewing operation; Control valve: Load-sensitive proportional multi-way change valve, controlled by electric proportional pilot hydraulic oil. Oil tank capacity: about 1100 L.
Operating mode	All the movements of the crane is controlled by two control levers at left and right. Pilot electric-proportional control is used for controlling the superstructure with PLC integrated intelligent control technology and CAN-BUS control network. Besides normal control functions, it also has the functions such as real-time monitoring, fault automatic diagnosis, intelligent boom control, single-cylinder pinning control
Main winch system	Hydraulic control is used for speed regulation. The system is driven by a hydraulic motor through a planetary gear reducer, with a normally closed brake, balance valve and a grooved drum equipped.
Slewing system	Single-row four-point ball contact external tooth slewing ring is driven by the planetary gear reducer of slewing mechanism driven by a hydraulic motor, may continuously slew 360°. Power control or free slewing function is available, and the slewing speed may be infinitely regulated.
Elevating system	Single-cylinder elevating with boom gravity fall mode to save fuel.
Operator's cab	New fully-enclosed steel cab has better sealing and anti-corrosive properties and it's safe and comfortable to use. It is equipped with a full-view front window. Safety glass and sun shield are used for windows. The cab features a new ergonomic seat design with backrest adjustment and armrests with joysticks fitted. A sliding door and a pull-out step are available to make it easy and safe as access and egress the cab. Wipers are fitted for the windshield and roof window. Control panel with human-machine interactive system is used in operator's cab. The cab can be tilted up to 20°. Heating & air conditioning are available.

Safety devices	Hydraulic system: hydraulic balance valve, hydraulic relief valve, double-way hydraulic valve, etc. are available to make hydraulic system safe and stable. The safety system includes displayer, central controller, length/angle sensor, over-winding switch, oil pressure sensor, etc. Lowering limiter switch can make the drum maintain three circles of wire ropes at least. Height limiter switch can make the lifting height within the max. limit.
Combined counterweight	Total weight is 40t. Counterweights of 0t, 12t, 19t, 30t, and 40t are available.

Boom system

Boom	6-section boom with U-shaped cross-section, welded structure. Boom length: 13.5m ~ 64m.
 Single top	Fitted at boom head, used for single line operation.
Jib	Two lattice jibs are stored besides the boom with 0°, 15° and 30° jib offset angles available. Jib length: 10.6m/18.1m

Additional equipment

Telescopic boom extension	two boom extension of 7m
independent jib head	independent jib head of 2.9m
Superstructure engine	OM906LA.E3A/2, Inline six-cylinder water-cooled EFI diesel engine, manufactured by Benz, rated power 190kW / 2200rpm, the maximum torque of 1000Nm / 1200-1600rpm, state III emission standards.
Chassis engine	Cummins (Xi'an)ISM11E5 440, 6 cylinders, diesel. Rated power/rpm: 324 kw/1900 rpm. Rated torque/rpm: 2080 N.m/1200 rpm. Emission standard: China V
Chassis Engine	WP12.430N, in-line six-cylinder water-cooled EFI diesel engine, manufactured by WEICHAI POWER, rated power 316kW /1900rpm, max. torque 2060Nm / 1000-1400rpm, China III emission standards.
Wireless control device	wireless remote control counterweight erection.

Product parts details As mentioned above, please refer to the product quotation for specific parts.

重量 Weight






车桥 Axle	1	2	3	4	5	总重量 Total weight
t	9.99	10	13	13	9	54.99








吊钩 Hook	倍率 No. of lines	吊钩重量 Weight kg	吊钩尺寸 Dimension mm	备注 Remarks
110t	12	1017	1785×730×560	双钩 Double hook , 标配 Standard
60t	6	500	1514×730×306	单钩 Single hook , 标配 Standard
7t	1	256	731×426×426	单钩 Single hook , 标配 Standard

作业速度 Working speeds

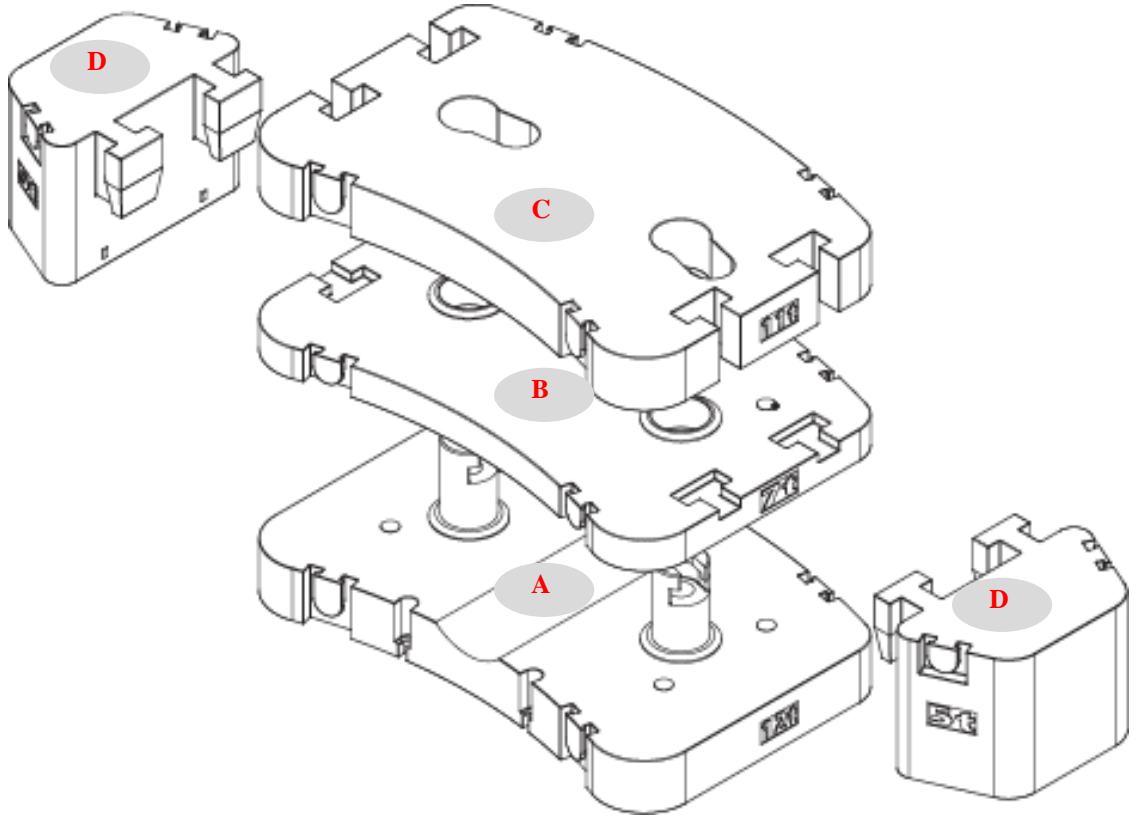


		
12.00R24-20PR	3 ~ 90	45%



作业机构 Drive	作业速度 Working speed	最大单绳拉力 Max. single line pull	钢丝绳直径/长度 Rope diameter/ length
	0-135 m/min , 单绳 , 第四层 m/min, single line, 4th layer	104 kN	22 mm/265 m
	0-105 m/min , 单绳 , 第四层 m/min, single line, 4th layer	74 kN	22 mm/210 m
	0-2.0 r/min		
	从-1°抬起至81°约60s Approx. 60s for boom elevation from -1° to 81°		
	从13.5m伸出至64m约480s Approx. 480s for boom extension from 13.5m to 64m		

平衡重 Counterweight



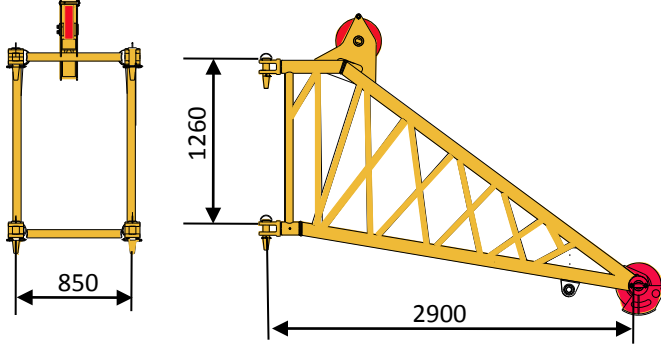
平衡重 Counterweight	A	B	C	D
尺寸 (长×宽×高) m Size (L×W×H) m	2995×2119×333	2995×2119×201	2995×2119×347	1459×960×881
重量 t Weight t	12	7	11	5

工况模式 Working mode	40t	30t	19t	12t	0t
组合形式 Combinations	A+B+C+D×2	A+B+C	A+B	A	0

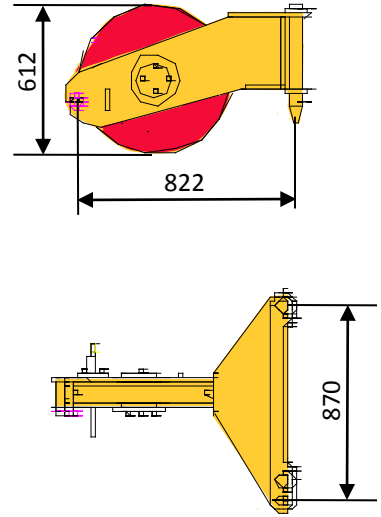
运输部件尺寸

Transportation components dimension

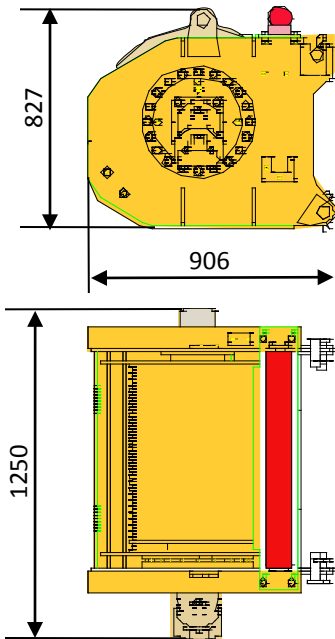
独立臂头 (选装) 431kg
Independent jib head (optional)



臂端单滑轮 107kg
Single top



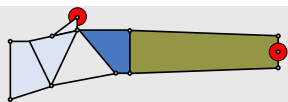
副起升机构 (含钢丝绳) 1920kg
Auxiliary winch (rope included)



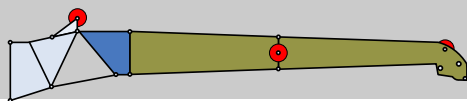
臂架组合方案

Boom / Jib combinations

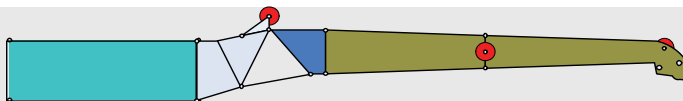
副臂 – 10.6m
Jib – 10.6m



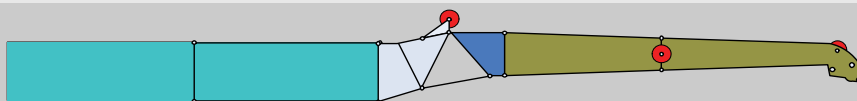
副臂 – 18.1m
Jib – 18.1m

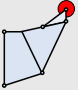
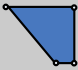





主臂加长节 – 25.1m
Telescopic boom extension – 25.1m



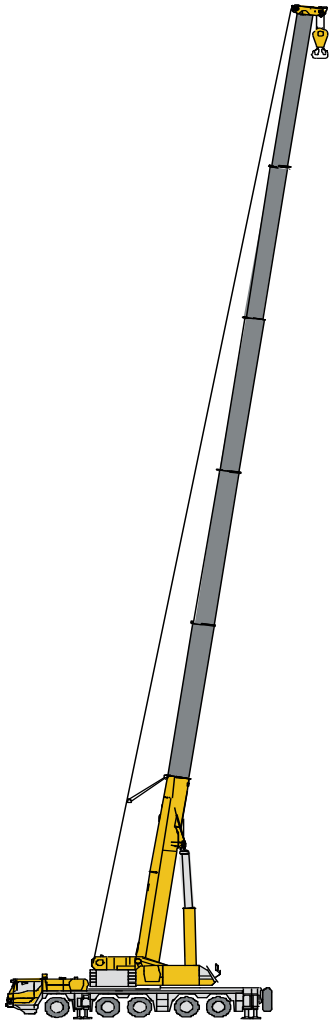
主臂加长节 – 32.1m
Telescopic boom extension – 32.1m



部件 Component	结构形式 Structure	尺寸 (长×宽×高) mm Size (L×W×H) mm	重量 kg Weight kg
连接架 Connection bracket		1887×850×1260	320
旋转架 Swinging bracket		2750×700×1250	229
主臂加长节 Telescopic boom extension		7000×850×1260	516
一节副臂总成 First jib section assembly		7385×550×750	430
二节副臂总成 Second jib section assembly		6690×310×410	289

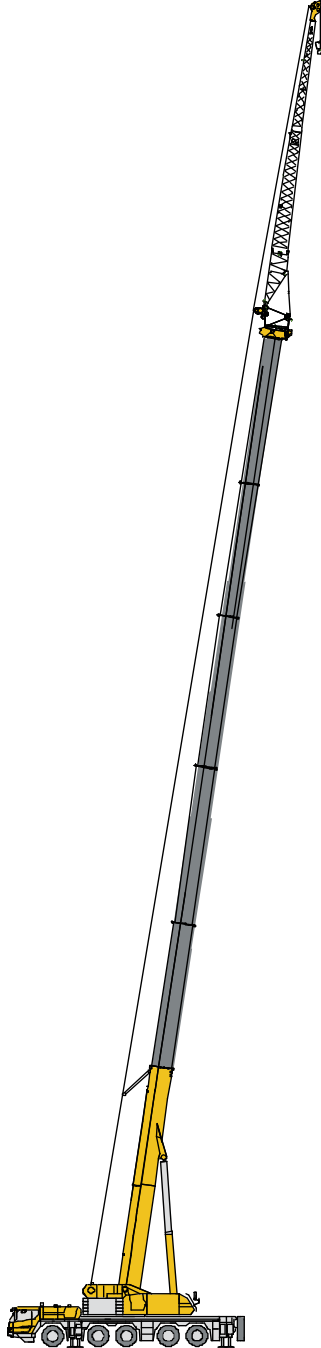
臂架组合方案

Boom / Jib combinations



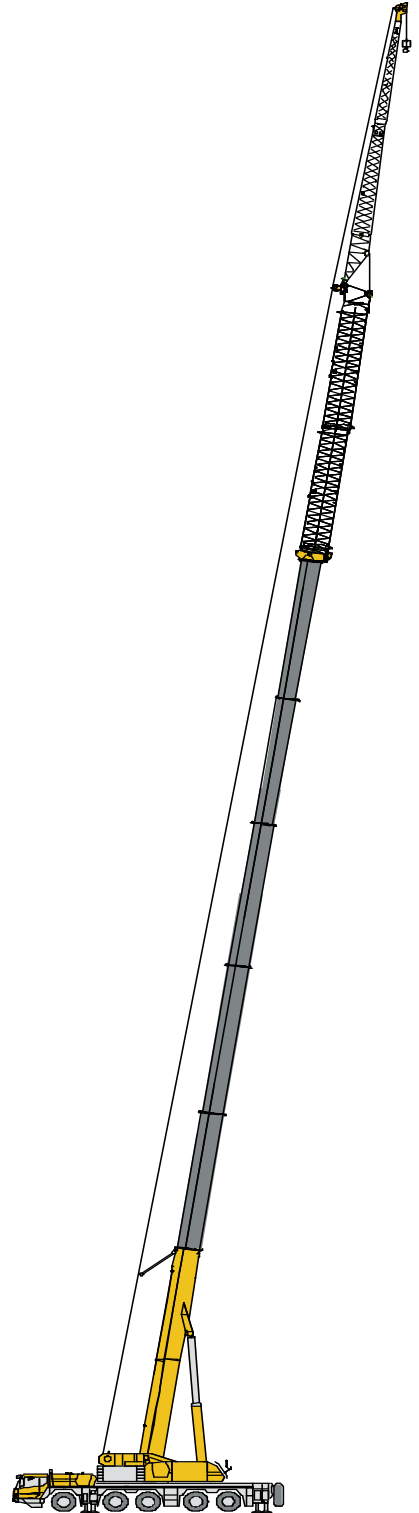
主臂
Telescopic boom

T : 13.5~64m



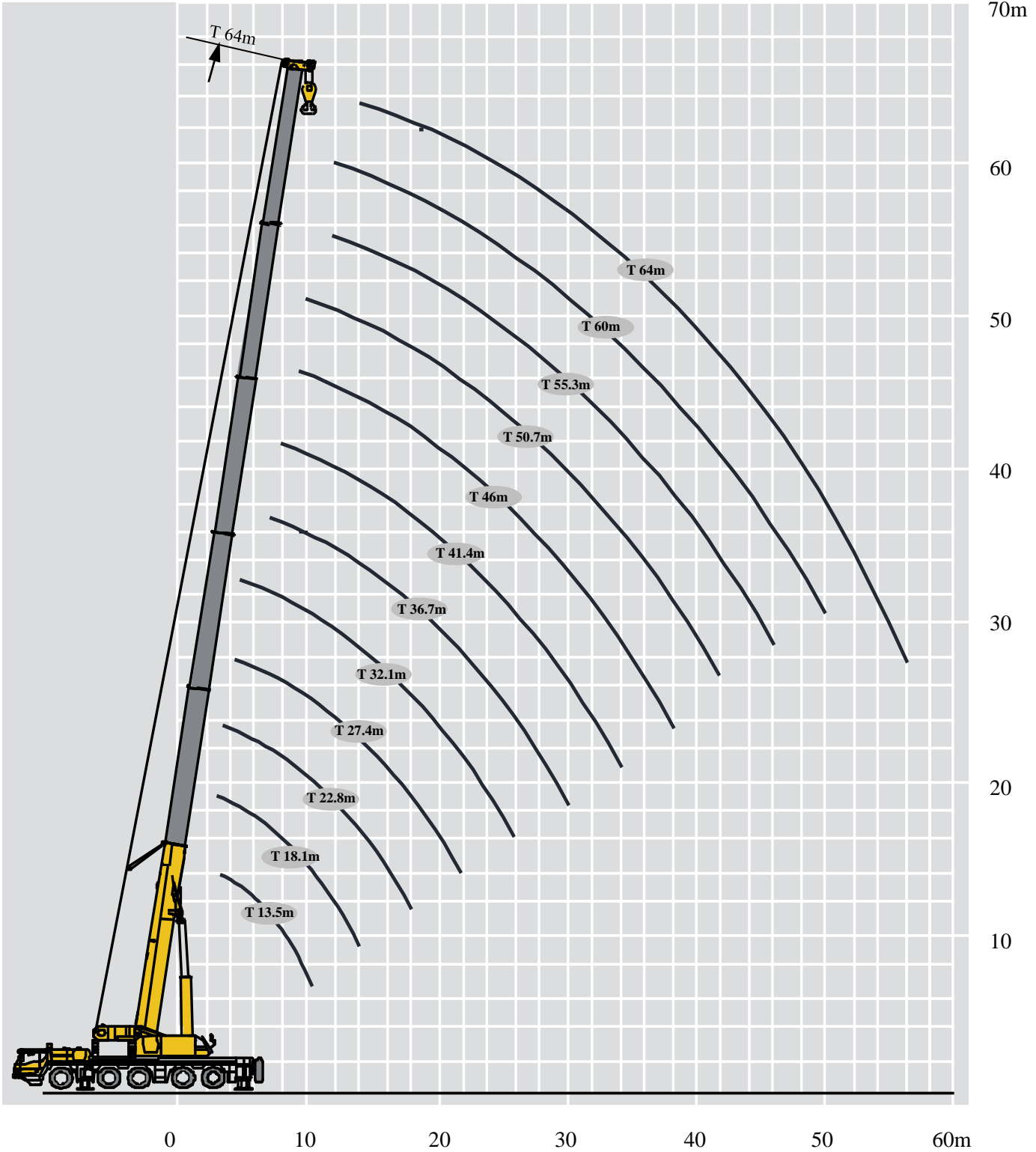
副臂
Jib

T : 55.3~64m
J : 10.6m/18.1 m



主臂加长节
Telescopic boom extension

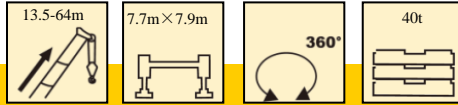
T : 55.3~64m
I : 7m/14m
J : 18.1m



起重性能表

Lifting capacities

T 13.5~64m





	13.5m	18.1m	18.1m	18.1m	22.8m	22.8m	22.8m	27.4m	27.4m	27.4m	
3	100.0	62.0	98	100							3
3.5	100.0	60.0	90	96	62.0	88.0	88.0				3.5
4	100.0	56.0	85	91	60.0	84.0	85.0	62.0	70.0	70.0	4
4.5	96.0	54.0	80	86	58.0	78.0	80.0	60.0	70.0	70.0	4.5
5	92.0	52.0	75	80	56.0	72.0	74.0	58.0	68.0	70.0	5
6	80.0	47.0	69	71	51.0	63.0	65.0	54.0	60.0	62.0	6
7	67.0	43.0	64	66	48.0	58.0	60.0	50.0	55.0	59.0	7
8	58.0	40.0	57	58	45.0	54.0	54.0	46.0	50.0	53.0	8
9	50.0	38.0	51	50	42.0	52.0	50.0	43.0	45.0	48.0	9
10	45.0	35.0	45	42	39.0	44.0	43.0	40.0	42.0	45.0	10
12		32.0	36.0	34.0	34.0	35.0	34.0	35.0	37.0	36.0	12
14		29.0	30.0	27.0	29.0	28.0	27.0	30.0	28.0	27.0	14
16					25.0	23.0	22.0	25.0	23.0	23.3	16
18					22.0	19.0	18.0	21.0	19.0	19.0	18
20								18.5	15.5	16.0	20
22								16.0	14.0	13.0	22
组合	00000	00001	00100	01000	00011	01100	11000	00111	02100	11100	组合

	32.1m	32.1m	32.1m	36.7m	36.7m	36.7m	41.4m	41.4m	41.4m	
5	60.0	60.0	53.0							5
6	55.0	60.0	48.0							6
7	50.0	55.0	45.0	44.0	45.5	45.5				7
8	45.0	50.0	42.0	40.0	45.5	42.0	33.0	37.0	37.0	8
9	44.0	46.0	40.0	36.5	43.0	40.0	31.0	35.5	36.0	9
10	40.0	42.0	37.0	34.0	41.0	37.0	29.0	33.5	34.0	10
12	39.0	37.0	34.0	30.0	37.0	32.0	26.3	30.0	30.5	12
14	32.0	30.0	29.0	26.0	31.0	28.0	23.8	26.5	27.0	14
16	26.0	24.5	23.0	23.0	25.0	23.0	21.6	24.0	23.5	16
18	21.8	20.0	19.0	21.0	20.5	19.5	19.5	21.0	20.5	18
20	18.5	17.0	15.9	18.0	17.5	16.5	18.0	17.5	17.0	20
22	16.0	14.5	13.4	15.5	15.0	14.0	16.0	15.0	14.5	22
24	14.0	12.5	11.4	13.5	13.0	12.0	13.5	13.0	12.5	24
26	12.3	10.9	9.7	12.0	11.5	10.0	12.0	11.5	11.0	26
28				10.5	10.0	8.5	10.5	10.0	9.5	28
30				9.4	9.0	7.7	9.5	8.9	8.4	30
32							8.5	7.5	7.0	32
34							7.3	6.8	6.5	34
组合	01111	11110	21100	02111	11111	21110	11112	12111	21111	组合

起重性能表

Lifting capacities

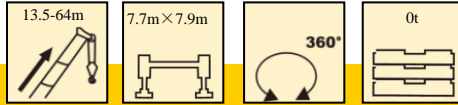
T 13.5~64m

	46m	46m	46m	50.7m	50.7m	50.7m	55.3m	55.3m	60m	64m	
9	25.0	30.0	30.0								9
10	24.6	28.0	27.5	22.5	24.5	25.0					10
12	22.0	26.0	25.5	21.0	23.5	24.0	19.0	19.0	17.0		12
14	19.8	24.5	24.0	19.0	21.0	21.5	18.0	18.5	16.0	13.0	14
16	17.9	22.0	21.7	17.5	19.0	19.5	16.9	17.6	15.0	12.5	16
18	16.4	19.8	19.4	16.0	17.0	17.5	15.1	15.7	14.1	12.0	18
20	15.0	17.9	17.3	14.5	15.0	15.5	13.6	14.0	12.7	11.0	20
22	13.9	15.4	14.8	13.5	14.0	14.3	12.5	12.7	11.5	10.0	22
24	12.9	13.4	12.8	12.5	12.8	13.0	11.3	11.5	10.5	9.5	24
26	12.0	11.7	11.1	11.8	11.6	11.0	10.4	10.5	9.6	8.7	26
28	11.1	10.3	9.6	10.5	10.0	9.5	9.6	9.6	8.8	8.0	28
30	9.8	9.0	8.4	9.8	9.0	8.5	8.9	8.8	8.1	7.3	30
32	8.8	7.9	7.3	8.5	8.0	7.5	8.2	7.8	7.5	6.7	32
34	7.8	7.0	6.4	7.8	7.0	6.5	7.6	6.9	6.8	6.2	34
36	7.0	6.2	5.6	7.0	6.5	5.5	6.9	6.1	6.4	5.7	36
38	6.3	5.5	4.9	6.4	5.5	5.0	6.2	5.4	5.8	5.3	38
40				5.7	5.2	4.5	5.6	4.8	5.2	4.9	40
42				5.2	4.6	3.9	5.0	4.2	4.6	4.5	42
44							4.5	3.7	4.1	4.1	44
46							4.0	3.3	3.6	3.7	46
48									3.2	3.3	48
50									2.8	2.9	50
52										2.5	52
54										2.2	54
组合	11122	12211	22111	11222	12221	22211	12222	22221	22222	33333	组合

起重性能表

Lifting capacities

T 13.5~64m



	13.5m	18.1m	18.1m	18.1m	22.8m	22.8m	22.8m	27.4m	27.4m	27.4m	
3	100.0	62.0	95.0	90.0							3
3.5	100.0	60.0	85.0	80.0	62.0	88.0	88.0				3.5
4	90.0	56.0	80.0	75.0	60.0	84.0	85.0	62.0	70.0	70.0	4
4.5	85.0	54.0	75.0	70.0	58.0	78.0	80.0	60.0	70.0	70.0	4.5
5	82.5	52.0	70.0	65.0	56.0	72.0	74.0	58.0	68.0	70.0	5
6	49.7	47.0	51.2	50.1	51.0	51.2	48.9	54.0	51.1	50.0	6
7	34.7	37.3	35.9	34.9	38.3	35.9	33.9	38.5	35.8	34.9	7
8	23.5	26.5	24.9	23.8	27.8	24.9	22.7	28.0	24.8	23.8	8
9	17.1	19.7	18.3	17.3	20.8	18.3	16.4	20.9	18.3	17.3	9
10	12.9	15.4	14.1	13.2	16.3	14.0	12.3	16.5	14.0	13.2	10
12		10.0	8.9	8.2	10.9	8.9	7.4	11.1	8.8	8.2	12
14		7.0	5.9	5.2	7.7	6.0	4.5	7.8	5.9	5.2	14
16					5.7	3.9	2.6	5.8	3.9	3.3	16
18					4.3	2.6	1.3	4.3	2.6	2.0	18
20								3.2	1.5	0.9	20
22								2.4			22
组合	00000	00001	00100	01000	00011	01100	11000	00111	02100	11100	组合

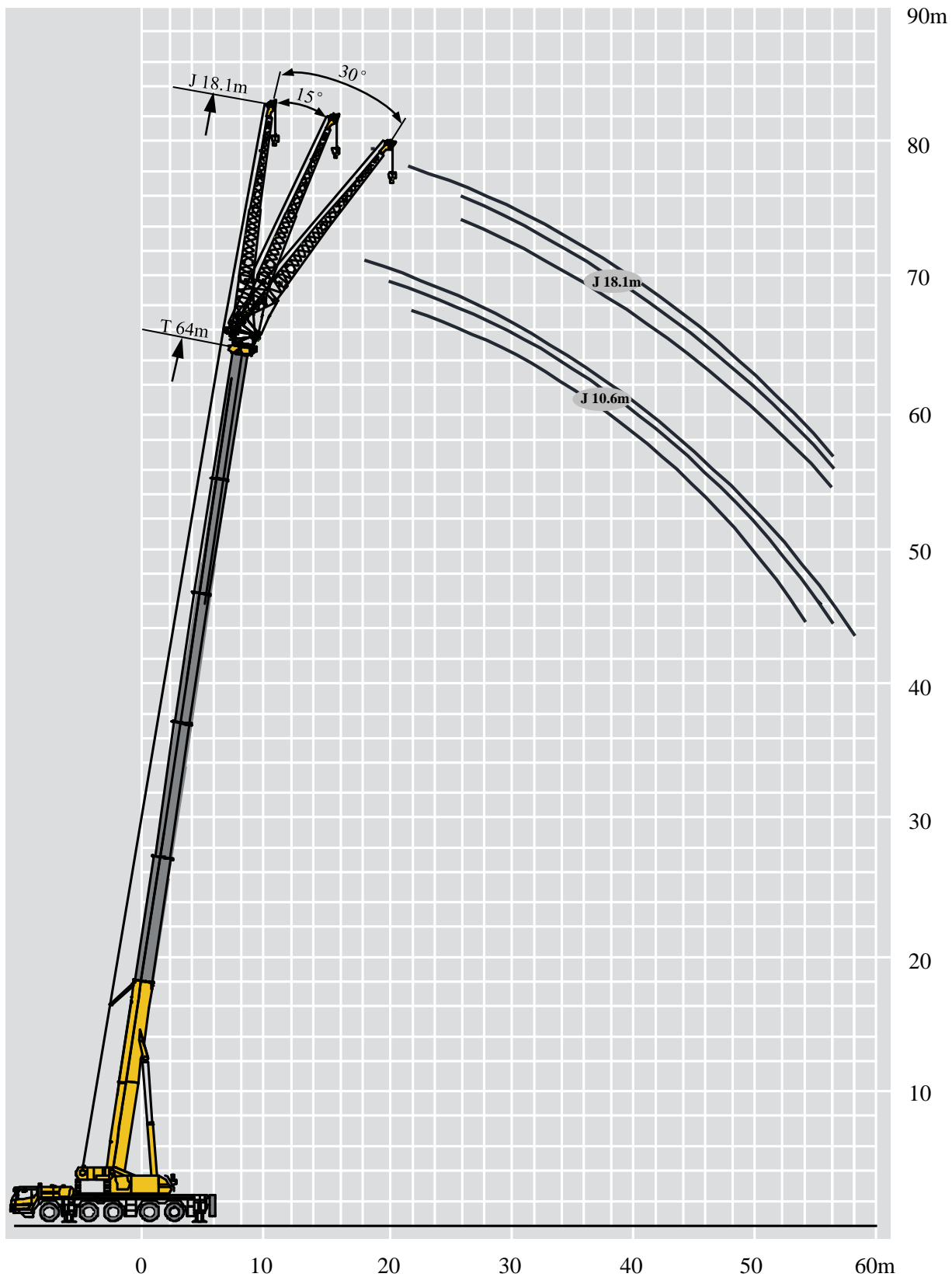
	32.1m	32.1m	32.1m	36.7m	36.7m	36.7m	41.4m	41.4m	41.4m	
5	60.0	60.0	53.0							5
6	53.8	51.3	48.0							6
7	38.1	36.0	34.2	37.7	37.1	35.2				7
8	27.5	25.1	23.0	27.1	26.3	24.1	27.3	26.1	25.4	8
9	20.6	18.4	16.7	20.2	19.6	17.7	20.4	19.4	18.8	9
10	16.1	14.2	12.6	15.8	15.1	13.5	16.0	15.0	14.5	10
12	10.7	9.0	7.7	10.5	9.9	8.4	10.5	9.8	9.3	12
14	7.6	6.0	4.8	7.3	6.8	5.4	7.5	6.7	6.3	14
16	5.5	4.1	2.8	5.3	4.8	3.6	5.4	4.7	4.3	16
18	4.1	2.6	1.5	3.8	3.4	2.2	3.9	3.3	2.9	18
20	3.0	1.6		2.7	2.3	1.2	2.9	2.2	1.9	20
22	2.1			2.0	1.5		2.0	1.4	1.0	22
24	1.4			1.3			1.4			24
组合	01111	11110	21100	02111	11111	21110	11112	12111	21111	组合

起重性能表

Lifting capacities

T 13.5~64m

	46m	46m	46m	50.7m	50.7m	50.7m	55.3m	55.3m	60m	64m	
9	20.8	19.6	18.7								9
10	16.3	15.2	14.4	16.4	15.6	14.6					10
12	11.0	9.9	9.2	11.0	10.4	9.4	10.8	9.9	10.3		12
14	7.7	6.9	6.2	7.8	7.2	6.4	7.7	6.8	7.2	7.2	14
16	5.7	4.8	4.3	5.8	5.2	4.4	5.6	4.8	5.2	5.2	16
18	4.3	3.4	2.8	4.3	3.7	3.0	4.2	3.3	3.7	3.7	18
20	3.1	2.4	1.8	3.2	2.6	2.0	3.1	2.3	2.6	2.7	20
22	2.3	1.5	1.0	2.4	1.9	1.2	2.2	1.4	1.8	1.9	22
24	1.6			1.7	1.2		1.5		1.2	1.2	24
26	1.1			1.1			1.0				26
组合	11122	12211	22111	11222	12221	22211	12222	22221	22222	33333	组合



起重性能表

Lifting capacities

J 10.6m/18.1 m

	55.3-64m			10.6m			7.7m×7.9m			360°			40t			
	55.3m			60 m			64 m									
	0°	15°	30°	0°	15°	30°	0°	15°	30°	0°	15°	30°	0°	15°	30°	
16	7.0															16
18	7.0	5.5		7.0						6.8						18
20	6.5	5.2	3.6	6.5	5.1					6.5	5.0					20
22	6.0	4.9	3.3	6.0	4.8	3.3				6.0	4.8	3.3				22
24	5.7	4.7	3.3	5.6	4.6	3.2				5.5	4.6	3.2				24
26	5.5	4.4	3.2	5.5	4.4	3.2				5.4	4.4	3.2				26
28	5.2	4.2	3.2	5.2	4.2	3.2				5.2	4.2	3.2				28
30	5.0	4.0	3.0	5.0	4.0	3.0				5.0	4.0	3.0				30
32	4.6	3.9	3.0	4.6	3.8	3.0				4.5	3.8	3.0				32
34	4.4	3.7	2.8	4.2	3.6	2.8				4.4	3.6	2.8				34
36	4.1	3.6	2.8	4.0	3.6	2.8				4.0	3.6	2.8				36
38	4.0	3.5	2.7	3.9	3.5	2.6				3.8	3.5	2.6				38
40	3.8	3.4	2.7	3.6	3.4	2.6				3.5	3.4	2.6				40
42	3.6	3.3	2.7	3.5	3.2	2.6				3.2	3.1	2.5				42
44	3.3	3.2	2.5	3.3	3.2	2.5				2.9	2.8	2.5				44
46	3.2	3.1	2.5	3.0	2.9	2.5				2.6	2.5	2.3				46
48	3.0	3.0	2.5	2.8	2.7	2.4				2.3	2.2	2.1				48
50	2.6	2.7	2.4	2.5	2.4	2.2				2.1	2.0	1.8				50
52	2.2	2.4	2.3	2.3	2.2	2.0				1.9	1.8	1.6				52
54	1.9	2.0	2.0	2.1	1.9	1.7				1.7	1.6	1.4				54
56				1.9	1.7	1.5				1.5	1.3					56
58				1.6	1.5	1.3				1.2						58
组合	22221			22222			33333			组合						

	55.3-64m			18.1m			7.7m×7.9m			360°			40t			
	55.3m			60 m			64 m									
	0°	15°	30°	0°	15°	30°	0°	15°	30°	0°	15°	30°	0°	15°	30°	
20	3.6			3.5												20
22	3.3	2.8		3.3						3.2						22
24	3.2	2.7		3.2	2.7					3.2						24
26	3.0	2.5	1.9	3.0	2.6					3.0	2.6					26
28	3.0	2.4	1.8	2.8	2.5	1.8				2.8	2.5	1.8				28
30	2.8	2.3	1.8	2.6	2.3	1.8				2.6	2.4	1.8				30
32	2.6	2.2	1.7	2.6	2.2	1.7				2.5	2.2	1.7				32
34	2.4	2.0	1.6	2.4	2.0	1.7				2.4	2.0	1.7				34
36	2.4	2.0	1.6	2.4	2.0	1.6				2.3	1.8	1.6				36
38	2.2	2.0	1.6	2.2	1.8	1.6				2.2	1.8	1.6				38
40	2.2	1.8	1.5	2.2	1.8	1.5				2.2	1.8	1.6				40
42	2.2	1.8	1.5	2.0	1.8	1.5				2.2	1.8	1.5				42
44	2.2	1.7	1.4	2.0	1.8	1.5				2.0	1.8	1.5				44
46	2.0	1.7	1.4	2.0	1.7	1.5				2.0	1.6	1.5				46
48	2.0	1.6	1.4	2.0	1.6	1.4				2.0	1.6	1.4				48
50	1.9	1.6	1.4	1.8	1.6	1.4				1.8	1.6	1.4				50
52	1.9	1.5	1.4	1.8	1.6	1.4				1.8	1.6	1.4				52
54	1.8	1.5	1.3	1.8	1.6	1.4				1.6	1.6	1.4				54
56	1.7	1.5	1.3	1.8	1.5	1.4				1.4	1.4	1.3				56
58	1.7	1.4	1.3	1.6	1.5	1.3										58
60	1.5	1.4	1.3	1.5	1.4	1.3										60
62	1.3	1.4	1.3	1.3	1.2											62
组合	22221			22222			33333			组合						

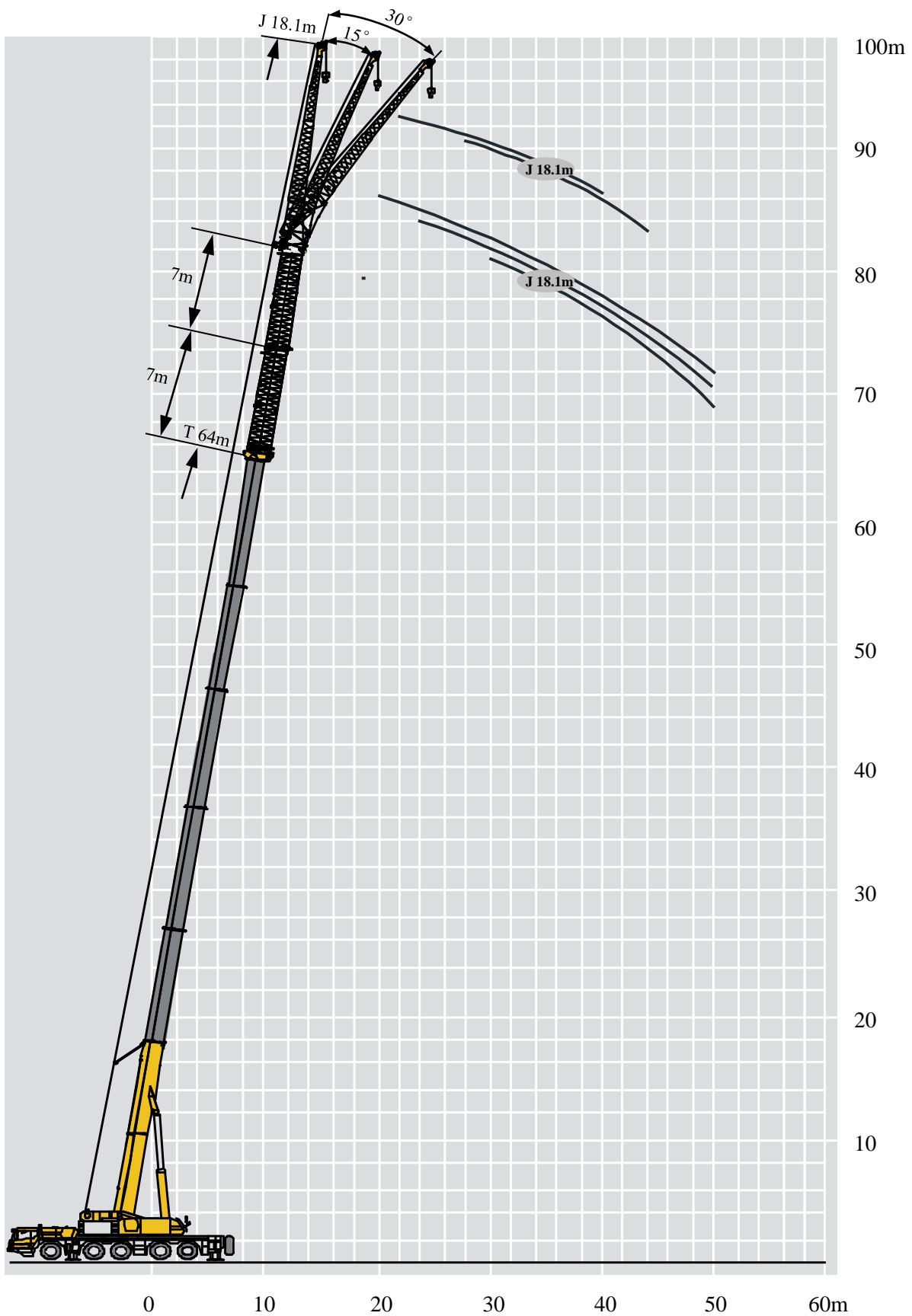
起重性能表

Lifting capacities

J 10.6m/18.1 m

	55.3-64m			10.6m			7.7m×7.9m			360°			19t			
	55.3m			60 m			64 m									
	0°	15°	30°	0°	15°	30°	0°	15°	30°	0°	15°	30°	0°	15°	30°	
16	7.0															16
18	7.0	5.5		7.0						6.8						18
20	6.5	5.2	3.6	6.5	5.1					6.5	5.0					20
22	6.0	4.9	3.3	6.0	4.8	3.3				6.0	4.8	3.3				22
24	5.7	4.7	3.3	5.6	4.6	3.2				5.5	4.6	3.2				24
26	5.2	4.4	3.2	5.5	4.4	3.2				5.4	4.4	3.2				26
28	4.3	4.2	3.2	4.6	4.2	3.2				4.5	4.2	3.2				28
30	3.6	4.0	3.0	3.9	4.0	3.0				3.8	4.0	3.0				30
32	3.0	3.3	3.0	3.2	3.5	3.0				3.2	3.5	3.0				32
34	2.4	2.7	2.8	2.7	3.0	2.8				2.6	2.9	2.8				34
36	2.0	2.3	2.4	2.2	2.4	2.7				2.2	2.4	2.7				36
38	1.5	1.8	2.0	1.8	2.0	2.3				1.7	2.0	2.2				38
40	1.2	1.4	1.5	1.4	1.6	1.8				1.4	1.6	1.8				40
42		1.0	1.2	1.1	1.3	1.4				1.0	1.3	1.4				42
44						1.1						1.1				44
组合	22221			22222			33333			组合						

	55.3-64m			18.1m			7.7m×7.9m			360°			19t			
	55.3m			60 m			64 m									
	0°	15°	30°	0°	15°	30°	0°	15°	30°	0°	15°	30°	0°	15°	30°	
20	3.6			3.5												20
22	3.3	2.8		3.3						3.2						22
24	3.2	2.7		3.2	2.7					3.2						24
26	3.0	2.5	1.9	3.0	2.6					3.0	2.6					26
28	3.0	2.4	1.8	2.8	2.5	1.8				2.8	2.5	1.8				28
30	2.8	2.3	1.8	2.6	2.3	1.8				2.6	2.4	1.8				30
32	2.6	2.2	1.7	2.6	2.2	1.7				2.5	2.2	1.7				32
34	2.4	2.0	1.6	2.4	2.0	1.7				2.4	2.0	1.7				34
36	2.3	2.0	1.6	2.4	2.0	1.6				2.3	1.8	1.6				36
38	1.9	2.0	1.6	2.1	1.8	1.6				2.1	1.8	1.6				38
40	1.5	1.8	1.5	1.7	1.8	1.5				1.6	1.8	1.6				40
42	1.2	1.6	1.5	1.4	1.8	1.5				1.4	1.7	1.5				42
44		1.3	1.4	1.1	1.4	1.5				1.0	1.4	1.5				44
46		1.0	1.3		1.1	1.4					1.1	1.4				46
48						1.1						1.1				48
组合	22221			22222			33333			组合						



起重性能表

Lifting capacities

I 7m/14m

	55.3-64m			60+7 m			64+7 m			
	0°	15°	30°	0°	15°	30°	0°	15°	30°	
16	2.6									16
18	2.5			2.4						18
20	2.3			2.2			2.2			20
22	2.2			2.1			2.1			22
24	2.2	2.2		2.1	2.0		2.0	2.2		24
26	2.1	2.0		2.0	2.0		2.0	2.0		26
28	2.1	2.0		2.0	2.0		2.0	2.0		28
30	2.1	2.0	1.8	2.0	2.0	1.8	1.8	2.0	1.8	30
32	2.0	2.0	1.7	1.8	1.8	1.8	1.8	2.0	1.7	32
34	1.8	1.8	1.7	1.8	1.8	1.7	1.8	1.8	1.7	34
36	1.8	1.8	1.7	1.8	1.8	1.7	1.6	1.8	1.7	36
38	1.8	1.8	1.6	1.6	1.6	1.6	1.6	1.8	1.6	38
40	1.6	1.6	1.6	1.6	1.6	1.6	1.6	1.6	1.6	40
42	1.6	1.6	1.5	1.6	1.6	1.6	1.4	1.6	1.6	42
44	1.6	1.6	1.5	1.4	1.6	1.4	1.4	1.6	1.4	44
46	1.4	1.4	1.4	1.4	1.4	1.4	1.4	1.4	1.4	46
48	1.4	1.4	1.4	1.4	1.4	1.2	1.2	1.4	1.5	48
50	1.4	1.4	1.2	1.2	1.2	1.2	1.2	1.4	1.2	50
52	1.2	1.2	1.2	1.2	1.2	1.2				52
54	1.2	1.2	1.2	1.2	1.2	1.0				54
56	1.2	1.2	1.0	1.0	1.0					56
58	1.0	1.0	1.0							58
60	1.0	1.0	1.0							60
62	1.0									62
组合	22221			22222			33333			组合

	55.3-14m			60+14 m			64+14 m			
	0°	15°	30°	0°	15°	30°	0°	15°	30°	
20	1.7									20
22	1.6			1.6			1.5			22
24	1.6			1.5			1.5			24
26	1.4	1.4		1.4	1.3		1.4			26
28	1.4	1.2		1.4	1.2		1.4	1.2		28
30	1.4	1.2		1.4	1.2		1.2	1.1		30
32	1.2	1.2		1.2	1.1		1.2	1.1		32
34	1.2	1.1		1.2	1.1		1.2	1.1		34
36	1.2	1.1		1.2	1.1		1.0	1.1		36
38	1.2	1.1		1.0	1.1		1.0	1.0		38
40	1.0	1.1		1.0	1.0		1.0	1.0		40
42	1.0	1.0		1.0	1.0			1.0		42
44	1.0	1.0			1.0			1.0		44
46		1.0								46
组合	22221			22222			33333			组合

起重性能表

Lifting capacities

I 7m/14m

	55.3-64m 18.1m			7.7m×7.9m			360°			19t		
	55.3+7 m			60+7 m			64+7 m					
	0°	15°	30°	0°	15°	30°	0°	15°	30°	0°	15°	30°
16	2.6											
18	2.5			2.4								
20	2.3			2.2				2.2				
22	2.2			2.1				2.1				
24	2.2	2.2		2.1	2.0			2.0	2.2			
26	2.1	2.0		2.0	2.0			2.0	2.0			
28	2.1	2.0		2.0	2.0			2.0	2.0			
30	2.1	2.0	1.8	2.0	2.0	1.8	1.8	2.0	1.8			
32	2.0	2.0	1.7	1.8	1.8	1.8	1.8	2.0	1.7			
34	1.8	1.8	1.7	1.8	1.8	1.7	1.8	1.8	1.7			
36	1.8	1.8	1.7	1.8	1.8	1.7	1.6	1.8	1.7			
38	1.8	1.8	1.6	1.6	1.6	1.6	1.6	1.8	1.6			
40	1.6	1.6	1.6	1.6	1.6	1.6	1.6	1.6	1.6			
42	1.5	1.6	1.5	1.6	1.6	1.6	1.4	1.6	1.6			
44	1.3	1.6	1.5	1.4	1.6	1.4	1.3	1.6	1.4			
46		1.3	1.4	1.1	1.4	1.4	1.0	1.4	1.4			
48		1.0	1.3		1.1	1.2		1.1	1.4			
50			1.0			1.1			1.1			
组合	22221			22222			33333			组合		

	55.3-64m 18.1m			7.7m×7.9m			360°			19t		
	55.3+14m			60+14 m			64+14 m					
	0°	15°	30°	0°	15°	30°	0°	15°	30°	0°	15°	30°
20	1.7											
22	1.6			1.6				1.5				
24	1.6			1.5				1.5				
26	1.4	1.4		1.4	1.3			1.4				
28	1.4	1.2		1.4	1.2			1.4	1.2			
30	1.4	1.2		1.4	1.2			1.2	1.1			
32	1.2	1.2		1.2	1.1			1.2	1.1			
34	1.2	1.1		1.2	1.1			1.2	1.1			
36	1.2	1.1		1.2	1.1			1.0	1.1			
38	1.2	1.1		1.0	1.1			1.0	1.0			
40	1.0	1.1		1.0	1.0			1.0	1.0			
42	1.0	1.0		1.0	1.0			1.0	1.0			
44	1.0	1.0			1.0				1.0			
46		1.0										
组合	22221			22222			33333			组合		

符号标识

Description of symbols

常规标识

General symbols

	上车 Superstructure		底盘 Chassis
	起重能力 lifting capacity		车桥 Axle
	吊臂长度 Boom length		行驶速度 Driving speed
	工作幅度 Radius		爬坡能力 Gradability
	吊臂仰角 Boom position		轮胎 Tyres
	主臂起升高度 Hoist height with Boom		支腿 Outriggers
	固定副臂长度 Fixed jib length		吊钩 Hook block
	副臂安装角 Jib offset angle		平衡重 Counterweight
	副臂起升高度 Hoist height with jib		卷扬 Winch
	主臂加长节 Boom extension		360°全回转 360° rotation

主要技术参数表

Table of Main Technical Parameters

类别 Category	项目 Item	单位 Unit	参数 Parameter		
尺寸参数 Dimensions	外形尺寸 (长×宽×高) Outline size (length×width×height)	mm	15600×3000×3870		
	轴距 Wheel base	mm	1920+3500+1420+1505		
	轮距 (前/后) Track (Front/ Rear)	mm	2449/2449/2315/2315/2449		
	前悬/后悬 Front/ Rear overhang	mm	2650/2765		
	前伸/后伸 Front/ Rear extension	mm	1840/0		
重量参数 Weight	最大允许总质量	kg	54990		
	轴荷	一轴 1st axle	kg	9990	
		二轴 2nd axle	kg	10000	
		三轴 3rd axle	kg	13000	
		四轴 4th axle	kg	13000	
	五轴 5th axle	kg	9000		
动力参数 Power	发动机型号 Engine model	—	WP12.430E50	ISM11E5 440	WP12.430N
	额定功率/转速 Engine rated power/rpm	kW/(r/min)	316/1900	324/1900	316/1900
	最大净功率/转速 Max. net power/rpm	kW/(r/min)	311/1900	318/1900	311/1900
	最大输出扭矩/转速 Engine rated torque/rpm	N.m/(r/min)	2060/1000-1400	2080/1200	2060/1000-1400
行驶参数 Travel	最高车速 Max. travel speed	km/h	≥90		
	最低稳定车速 Min. travel speed	km/h	3		
	最小转弯直径 Min. turning diameter	m	≤23		
	臂头最小转弯直径 Min. turning diameter at boom tip	m	≤26		
	最小离地间隙 Min. ground clearance	mm	326		
	接近角 Approach angle	°	18		
	离去角 Departure angle	°	13		
	制动距离 (制动初速度为30km/h) Braking distance (at 30 km/h)	m	≤10		
	最大爬坡能力 Max. grade ability	%	≥45		
	百公里油耗 Fuel consumption per 100 km	L	70	65	70
噪音 Noise	加速行驶机外噪声 Exterior noise level	dB(A)	≤88		
	驾驶员耳旁噪声 Noise level at seated position	dB(A)	≤90		

主要技术参数表

Table of Main Technical Parameters

类别 Category	项目 Item		单位 Unit	参数 Parameter	
主要性能参数 Main performance	最大额定总起重量 Max. total rated lifting capacity		t	100	
	最小额定工作幅度 Min. rated working radius		m	3	
	转台尾部回转半径 Turning radius at turntable tail	平衡重处 Counterweight	mm	4970	
		副卷处 Auxiliary winch	mm	4980	
	最大起重力矩 Max. load moment	基本臂 Base boom	kN.m	4704	
		最长主臂 Fully-extended boom	kN.m	2233	
		最长主臂+副臂 Fully-extended boom + Jib	kN.m	840	
	支腿跨距 Outrigger span	纵向 Longitudinal	m	7.7	
		横向 Lateral	m	7.9	
	起升高度 Hoist height	基本臂 Base boom	m	13.9	
		最长主臂 Fully-extended boom	m	63.3	
		最长主臂+副臂 Fully-extended boom + Jib	m	92.6	
	起重臂长度 Boom length	基本臂 Base boom	m	13.5	
		最长主臂 Fully-extended boom	m	64	
		最长主臂+副臂 Fully-extended boom + Jib	m	96.1	
副臂安装角 Jib offset angle		°	0、15、30		
工作速度参数 Working speed	起重臂起臂时间 Boom raising time		s	≤60	
	起重臂全伸时间 Boom fully extended time		s	≤480	
	最大回转速度 Max. slewing speed		r/min	≥2.0	
	支腿收放时间 Outrigger extending and retracting time	水平支腿 Outrigger beam	收 Retracting	s	≤20
			放 Extending	s	≤20
		垂直支腿 Outrigger jack	收 Retracting	s	≤50
			放 Extending	s	≤50
起升速度 (单绳,第四层,空载) Hoisting speed (single line, 4th layer, no load)	主起升机构 Main winch		m/min	≥135	
	副起升机构 Auxiliary winch		m/min	≥105	
噪声 Noise	机外辐射 Exterior noise level		dB (A)	≤122	
	司机位置处 Noise level at seated position		dB (A)	≤90	

注意事项

Notes

1. 表中额定总起重量值，是在平整的坚固地面上本起重机能够保证的最大总起重量，包括吊钩和吊具的重量，所以为了估算重物重量，必须减去上述的装置重量。
2. 表中的工作幅度为起吊重物离地时起重物到起重机回转轴线的水平距离，是包括起重臂变形量在内的实际值，因而起吊前应考虑起重臂变形量。
3. 只允许在5级(瞬时风速14.1m/s，风压125N/m²)风以下进行作业。
4. 吊重前操作者必须对物体的重量和工作范围了解后选择合适的作业工况，严禁超出表中的数值。幅度及臂长在相邻两个数值之间时，应依据两个数值中较小值确定起重作业。
5. 应按主臂仰角范围作业，即使是空载，也不应使主臂仰角处于范围外，谨防整机倾翻。
6. 表中的主臂长度应要按照每节臂的伸缩要求进行伸出。

1. The total rated loads given in the rated load charts are the maximum lifting capacity when the crane is set up on firm and level ground, which includes the weight of the hook block and slings. The weight of above-mentioned devices should be deducted from the rated lifting load.
2. The working radius shown in the rated load charts is the radius when the load is lifted off the ground, and it is the actual value including loaded boom deflection. Take boom deflection into consideration before beginning a lifting operation.
3. A lifting operation is permissible only when the wind force is below grade 5 (instantaneous wind speed is 14.1 m/s, wind pressure is 125 N/m²).
4. Before beginning lifting operation, the operator should know the weight of the load to be lifted and its working range, and then select proper working conditions. Never operate the crane beyond the limit shown in the chart. Use the lower value from the chart when the boom length or working radius is between the range of values.
5. Observe the boom angle limit. Never operate the crane with the boom angle beyond the recommended limit even if a load is not being carried. Otherwise, the crane will tip.
6. The boom should be extended according to the telescoping code shown by digits, which means the percentage of boom sections extended.



地址：江苏省徐州市经济技术开发区高新路68号

Add : No. 68, Gaoxin Road, Economic Development
Zone, Xuzhou, Jiangsu Province, China

电话(Tel) : +86-516-83462242/83462350

质量监督电话(Quality Inquiry Tel) : +86-516-87888268

备件电话(Spare Parts Tel) : +86-516-83461542

邮编(Post Code) : 221004

网址(Web) : www.xcmg.com/qizhongji

服务热线 Service Tel

400-110-9999

400-001-5678



本印刷品不属于合同。出于产品不断改进的需要，我们保留对产品型号、参数、配置进行变更的权利，恕不另行通知。图片仅供参考，具体产品以实物为准。图片中产品可能并非标准配置，部分部件可能需要另行购置。办理牌照和上路行驶需遵守当地法规。

This print does not belong to the contract. We reserve the right to modify the design (such as product model, parameters and configuration) without notice for improvement. The pictures are just for reference. The product in the picture may not be standard configuration. Some parts need to be purchased separately. Conform to the local laws for license application and road traveling.