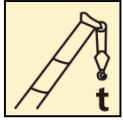
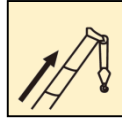


# 汽车起重机 / Truck Crane

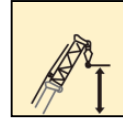
## XCT130\_M



130 t



73 m



96.4 m



# XCT130\_M

XCT130\_M广泛适用于建筑工地、城市改造、交通运输、港口、桥梁、油田、矿场等场所和其它复杂的作业环境

XCT130\_M Truck crane is widely used for the lifting operations in general engineering projects, such as construction site, urban renewal, communication and transportation, ports, bridge, oilfields and mine, and complex working environments.





# XCT130\_M

# XCT130\_M

- 七节“U型”73米主臂，最大起重能力：130吨，最大起升高度：96.4米，最大工作半径：60米，性能全面领先
- 7-section boom of 73 m with U-type profile is adopted; the max. lifting load is 130 t; the max. lifting height is 96.4 m; the max. working radius is 60m; The performance takes the lead comprehensively.
- 低速大扭矩动力系统，实现最佳动力与最优经济性的完美结合，综合燃油消耗降低12%以上，爬坡能力提高10%以上
- Low speed large torque power transmission system, contributes to perfect combination of optimal power and optimal economical efficiency, leading to more than 12% reduction in fuel consumption and 10% improvement in grade ability.
- 底盘后轴液控随动转向技术，实现公路行驶及小转弯两种转向模式，保证整车高速行驶稳定可靠，低速行驶机动灵活
- Chassis rear hydraulic controlled follow-up steering technology, realize highway and small turning two steering modes, ensure stable and reliable of vehicle at high speed, travelling at lower speed is flexible.











## 回转机构

### Slewing mechanism

- 单排四点接触球外齿式回转支承，360度回转
- Single-row four-point ball contact external tooth slewing ring, may continuously slew 360°.
- 定量泵-低速大扭矩定量马达液压系统
- A constant displacement pump and a low speed large torque motor with mature slewing buffering technology adopted
- 具有动力控制或自由回转的功能，可无级调速
- Power control and free-sliding function are available, and speed may be infinitely regulated
- 回转速度为0-2r/min
- Slewing speed 0-2r/min



## 超强起重性能

### Super lifting performance

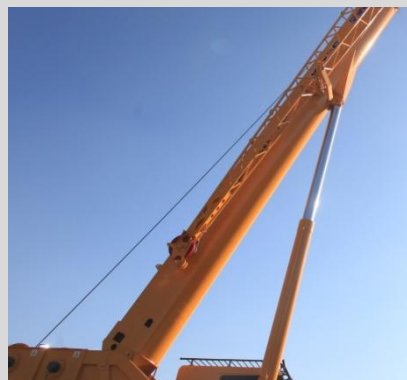
- 行业最长七节 73米“U型”主臂，主吊钩最大 12 倍率，性能领先同类产品 15%，新型单缸插销伸缩机构，伸缩可靠性更高；
- 7-section boom of 73m with U-type profile is the longest of the same class in the industry; the max. parts of line is 12 for the main hook block. The performance is 15% higher than that of the competitors. New single-cylinder pinning telescoping system brings higher telescoping reliability;
- 创新单板臂头与紧凑型臂尾结构，搭接比行业最大，吊臂承载力更强。
- Innovative single-plate boom head and compact boom tail structure, best overlapping ratio in its class and stronger boom load-bearing capacity;



## 起升机构

### Hoisting mechanism

- 变量泵-变量马达开式液压系统
- The open winch hydraulic system consisting of variable displacement pumps and variable displacement motors
- 行星齿轮减速器、常闭式制动器
- Planetary gear reducer, normally closed brake
- 最大单绳拉力为104KN
- Max. single line pull 104KN
- 最大起升速度135m/min
- Max. hoisting 135m/min



## 变幅机构

### Elevating mechanism

- 单变幅油缸，可靠性高
- Single elevating cylinder, high reliability
- 使用带负载补偿功能的变幅平衡阀
- The elevating balance valve with load compensation function
- 采用重力下降模式，节省燃油
- The external-controlled boom gravity fall mode to save fuel

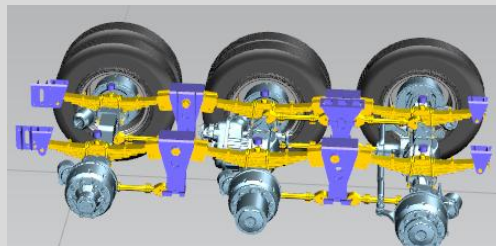




## 动力传动系统

### Drive train

- 康明斯发动机，额定功率324kw，最大输出扭矩2080N.m
- Cummins engine, rated power 324kw, max. torque 2080N.m
- 进口艾利逊自动变速箱
- American Allison 6-speed automatic transmission; steady and reliable.
- 最高车速90Km/h，最大爬坡能力45%
- Max. travel speed 90Km/h, Max. grade ability 45%







## 低速大扭矩动力传动系统

### Low-speed large-torque power drive system

- 以低速大扭矩发动机和大速比、超速档变速箱为核心的全新动力平台，驱动性能强，承载能力高，稳定性好；
- The new power system consists of a low speed large torque engine and a transmission with high speed ratio and over drive contributes to strong driving performance, high load-bearing capacity and better stability.
- 实现了高动力性能与低油耗完美融合，行驶油耗降低12%，动力性能提高15%，作业状态综合油耗降低15%；
- Resulting in perfect combination of high power performance and low fuel consumption, i.e.12% reduction in fuel consumption for driving, 15% for operation, and 15% improvement in power performance.



## 短途转场

### Drive for a short distance

- XCT130\_M短途转场可携带吊钩、副臂、副卷及钢丝绳索具、13t配重，节省用户拖车运输成本。
- XCT130\_M can drive for a short distance with hook block, jib, auxiliary winch & rope, and counterweight of 13t on board, which will save transport cost for users.

## 悬挂系统

### Suspension system

- 前悬架采用钢板弹簧平衡悬架
- Front suspension adopts leaf spring balanced suspension
- 后悬架采用双纵臂板簧平衡悬架
- Rear suspension adopts double trailing arm leaf spring balanced suspension



## 制动系统

### Brake system

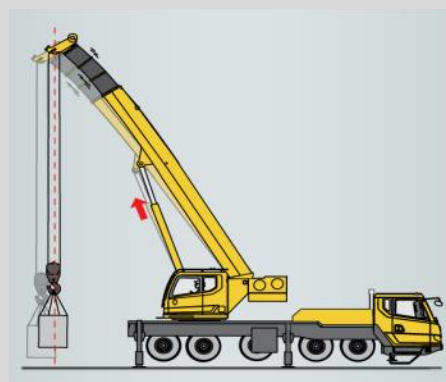
- 脚踏板操纵的双回路气压制动。前轴为盘式制动器，后轴为鼓式制动器
- Foot pedal operated double-circuit air pressure brake. The disc brakes are used for the front axles, drum brakes are used for the rear axles.
- 驻车制动：弹簧储能制动，作用于2,3,4,5轴车轮。
- Parking brake: spring energy brake, acting on wheels of 2,3,4,5axles.
- 辅助制动：发动机排气制动、发动机缸内缓速制动
- Auxiliary brake : engine exhaust brake, engine compression brake.



## 工况自动规划技术

### Automatic working condition planning technology

- 自动推荐最优工况
- Automatically recommend the most proper working conditions
- 简化查询与设置工况过程
- Searching and setting work condition simply



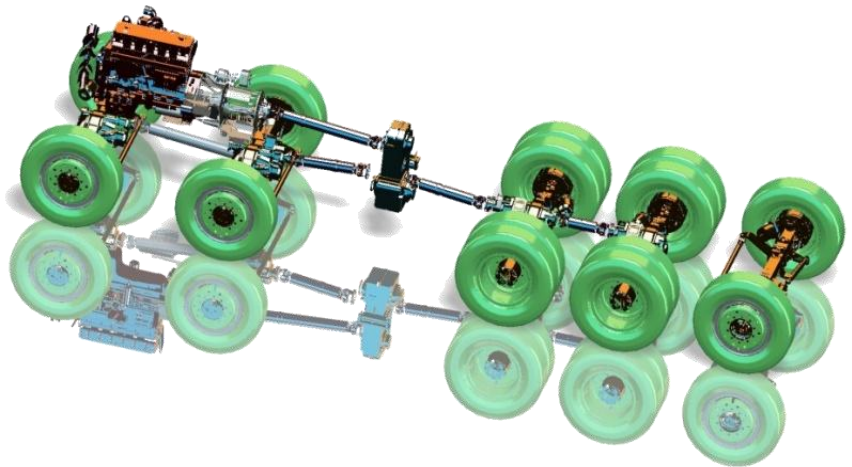




## 后桥随动转向及四桥驱动技术

### Rear follow-up steering and four-axle drive technology

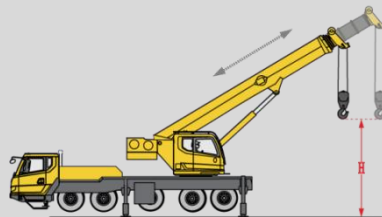
- 底盘后轴液控随动转向技术，实现公路行驶及小转弯两种转向模式，保证整车高速行驶稳定可靠，低速行驶机动灵活；
- Chassis rear hydraulic controlled follow-up steering technology, realize highway and small turning two steering modes, ensure stable and reliable of vehicle at high speed, travelling at lower speed is flexible.
- 国内首款适时四驱汽车起重机，三桥、四桥驱动形式自由切换，底盘行驶更灵活，通过能力更强，满足各种路况需求；
- China's timely four-wheel drive truck crane, three-axle drive and four-axle can free switch, chassis driving are more flexible with stronger go-through ability, meet the demand of various road conditions.



## 起重变幅补偿控制技术

### Automatic elevating compensation technology

- 通过控制起重机变幅角度，自动实现对起落钩时，吊臂变形引起的幅度变化进行补偿。
- With elevation compensation technology applied, elevation compensation caused by boom deformation can be achieved during hook block raising and lowering process through regulating the elevation angle of the crane.



## 卷扬随动控制技术

### Winch servo control technology

- 在伸缩、变幅时，由控制系统自主控制卷扬，节省作业时间40%以上。
- With winch servo control technology applied, winch is automatically managed by control system during telescoping and elevating operation, which saves operation time over 40%.
- 具备变幅地面随动、伸缩地面随动、伸缩臂头随动三种模式
- There are 3 modes : THB, THG, EHG

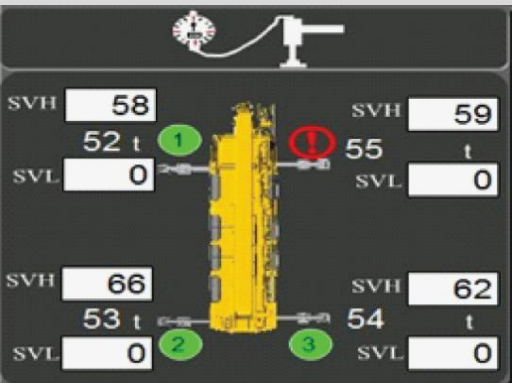




## 支腿压力检测

### Outrigger pressure detection function

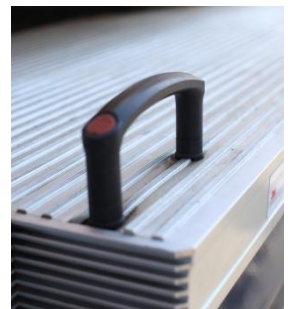
- 实时监控支腿受力情况，作业稳定性不足或超出支腿压力设定范围时紧急报警，防止翻车事故的发生
- Enables to detect outrigger pressure in real time. When the operation stability is insufficient or actual outrigger pressure exceeds the set scope, emergency alarm will sound to prevent tipping-over accident;



## 新型外观造型与人性化设计

### New appearance and humanized design

- 新一代外观设计，整机刚劲有力，时尚的驾驶室与操纵室新外观，层次感与力量感完美结合；全面的人体工程学分析，人性化细节处理，打造驾驶轻松、操纵舒适，维护便捷的内在品质
- A new generation of appearance design makes the whole vehicle powerful and vigorous; Fashionable outlines of driver's cab and operator's cab bring perfect combination of sense of layers and sense of physical strength; ergonomics analysis and humanized details make inherent quality of easy driving comfortable operation and convenient maintenance



## 新型电控支腿操纵面板

### New electric-controlled outrigger control panel

- 新型电控支腿操纵面板，增加远程启动、熄火等功能，更加人性化，增加急停开关，保证安全性
- New electric-controlled outrigger control panel, with remote start, stop functions added to improve humanization, and an emergency stop switch to ensure safety.



## 无线配重挂接（选装）

### Wireless counterweight erection system (optional)

- 无线配重挂接，CAN总线通信，操作方便性高，不受距离限制，手持更方便。
- Wireless counterweight erection system, in which CANBus communication makes operation more convenient, without being limited by distance; and hand-held size offers more convenient operation.



## 驾驶室

### Driver's cab

- 主驾气悬浮座椅，自动调节高度  
An air-floating seat designed for the driver is automatically adjustable in height
- 副驾双座椅，可展开为简易卧铺  
A double-seat designed for the co-driver may be used as a berth for rest.





## 徐工人机交互系统

### XCMG man-machine interactive system

- 行业首发，用轿车级别的人机交互系统，实现了操作人员与车辆的友好对话。轻松掌控车辆行驶、起重作业的各种状态信息，操纵更轻松、便捷
- First launched in the industry man-machine interactive system with the level of a car achieves friendly conversation between operator and crane. Information of every state in driving and lifting operation is administered easily which makes operation easier and more convenient.
- 安全保护、吊装动作、操纵环境三个区域，控制便捷
- Three control areas for safely protection, hoisting operation and operating environment bring convenient control



## 操纵室

### Operator's cab

- 全人机工学工作空间设计，作业更舒适，安全
- Ergonomically designed working space makes operation safer and more comfortable
- 10.4寸真彩色触摸屏
- 10.4 inch color touch screen displays
- 20°可俯仰操纵室
- Operator's cab can be tilted 20° backwards



地址：中国江苏徐州市铜山路165号

Add : No.165 Tongshan Road Xuzhou Jiangsu China

电话(Tel) : +86-516-83462242/83462350

质量监督电话(Quality Inquiry Tel) : +86-516-87888268

备件电话(Spare Parts Tel) : +86-516-83461542

邮编(Post Code) : 221004

网址(Web) : [www.xcmg.com/qizhongji](http://www.xcmg.com/qizhongji)

**服务热线 Service Tel**

**400-110-9999**

**400-001-5678**



本印刷品不属于合同。出于产品不断改进的需要，我们保留对产品型号、参数、配置进行变更的权利，恕不另行通知。图片仅供参考，具体产品以实物为准。图片中产品可能并非标准配置，部分部件可能需要另行购置。办理牌照和上路行驶需遵守当地法规。

This print does not belong to the contract. We reserve the right to modify the design (such as product model, parameters and configuration) without notice for improvement. The pictures are just for reference. The product in the picture may not be standard configuration. Some parts need to be purchased separately. Conform to the local laws for license application and road traveling.