

# XCA180 全地面起重机 / All Terrain Crane

## 产品简介

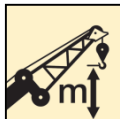
Brief introduction



180t



64m



103m





## 全球首台55吨自重五轴180吨全地面起重机

A five-axle 180 t all terrain crane with leading lifting performance.



64m



11~39.5m



54t



# XCA180



## 动力强劲，行驶性能优越

### Power and traveling performance

- 电控柴油发动机，额定功率356kW，最大输出扭矩 2300N.m
- Electronic diesel engine, rated power 356kW, max. torque 2300N.m
- 12速自动变速箱
- 12-speed automatic gearbox
- 最高车速80Km/h，最大爬坡能力65%（14.00R25）/60%（16.00R25/20.50R25）
- Max. travel speed 80Km/h, Max. grade ability 65%（14.00R25）/60%（16.00R25/20.50R25）

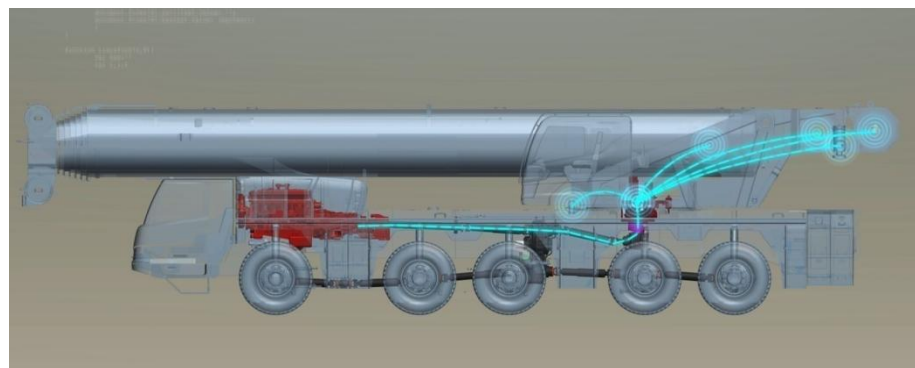




## 大吨位起重机单发动机系统

### Large tonnage crane's single-engine system

- 整车共用底盘发动机，动力通过机械传动传递到上车，为上车提供动力。
- One shared chassis engine is adopted for the whole crane. Power is transmitted to the superstructure mechanically.
- 仅需对底盘单台发动机系统进行维护保养，降低维护工作量。动力系统年维护费用节约40%以上。
- Maintenance is to be carried out only on the single-engine chassis system thus the workload of maintenance is reduced.. The annual maintenance cost of power system is saved by more than 40%.



## 悬挂系统

### Suspension system

- 自动调平、悬架升降、弹性刚性转换等功能
- Functions of automatic leveling, suspension lifting, elastic/rigid state switch-over
- 油缸行程为-130mm ~ 170mm
- Stroke of cylinder -130mm ~ 170mm



## 制动系统

### Braking system

- 双回路气动盘式制动器
- Double-circuit air pressure brake, disc brake
- 2、3、4、5桥弹簧储能制动
- Axles 2<sup>nd</sup>, 3<sup>rd</sup>, 4<sup>th</sup> and 5<sup>th</sup> with spring-loaded brakes.
- 辅助：发动机排气制动、发动机缸内缓速制动、变速箱缓速制动；
- Auxiliary: engine exhaust brake, engine compression brake, transmission retarder brake

# XCA180



## 转向系统

### Steering system

- 1、2轴机械控制+液压助力，3、4、5轴电控液压转向；
- 1<sup>st</sup>, 2<sup>ed</sup> axles employs mechanical control plus hydraulic servo steering, 3<sup>rd</sup>, 4<sup>th</sup> and 5<sup>th</sup> axles are electric-control hydraulic steering.
- 1、2轴带有应急转向助力系统，
- 1<sup>st</sup>, 2<sup>ed</sup> axles have emergency steering booster system located on the transfer case.



## 机动灵活

### High mobility

- 全桥转向，转弯半径小，三桥/四桥驱动自由切换，三驱用于公路行驶，行驶经济性高；四驱适应越野及场地转移，爬坡能力达到65%（14.00R25），行业最高。
- All-axle steering, small turning radius and free changeover of 6WD/8WD are available. 6WD is used to drive on roads, which is more economic. 8WD is suitable for off-road travel and jobsite transfer. Max. grade ability is 65% (14.00R25), taking the lead in the industry.



## 6种转向模式

### 6 steering modes

- 通过旋钮式开关选择转向模式
- Mode selection by a knob switch
- 清晰的控制原理及布局
- Clear arrangement of control elements and displays

# XCA180



## 起升机构

### Winch system

- 行星齿轮减速器、常闭式制动器
- Planetary gear reducer, normally closed brake
- 最大单绳拉力为101kN
- Max. single line pull is 101kN
- 最大起升速度（单绳，空载）135m/min
- Max. hoisting speed (single line, no load) is 135m/min





## 新型高效节能液压系统

### New highly efficient energy-saving hydraulic system

- 新型全闭式节能液压系统，起升采用双变量精细调节系统及控制策略，启动平稳，操控平顺。
- New fully closed hydraulic system for lifting system is available, equipped with double-variable fine control adjusting system and control strategies, contributing to stable and smooth operation.
- 变幅伸缩采用闭式容积调速系统，有效吸收负功率，更节能。
- Closed volumetric speed adjusting system for elevating and telescoping system, which is more energy-efficient.
- 最低起升稳定速度（卷筒处）0.8-1m/min，最低稳定回转速度0.1°/s
- Min. stable lifting speed (at drum) is 0.8-1m/min, and min. stable slewing speed is 0.1°/s.



## 超强起重性能

### Superb lifting performance

- 6节主臂64m，固定副臂11m-18.5m，3节7m主臂加长节。
- Six-section boom of 64m. Fixed jib of 11m-18.5m, and three boom extensions with each length of 7m are available.
- 0°、20°和40°副臂安装角度
- 0°, 20° and 40° jib offset angles

## 变幅机构

### Elevating mechanism

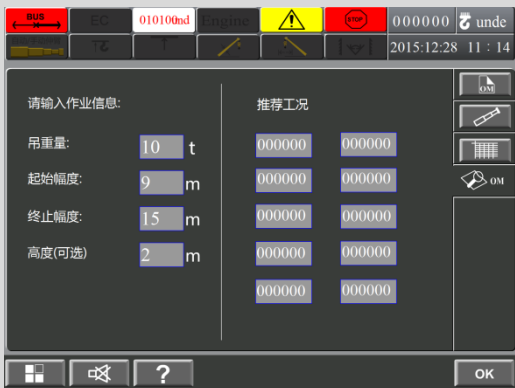
- 单变幅油缸，采用重力+动力下降模式
- Single-stage elevating cylinder, free fall plus power lowering mode.
- 带自补偿功能的电比例平衡阀，更安全
- Safer electric proportional balance valve with self-compensating function



## 回转机构

### Slewing mechanism

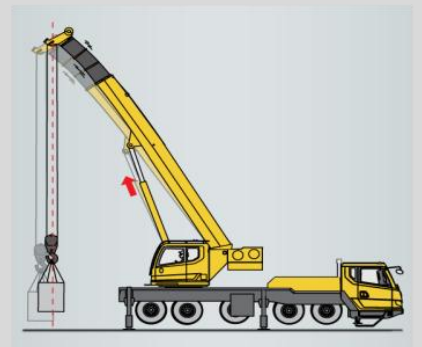
- 行星齿轮减速器、常闭式制动器
- Planetary gear reducer, normally closed brake
- 360°连续回转
- Continuous 360° slewing
- 回转速度为0-1.5r/min
- Slewing speed 0-1.5r/min



## 工况自动规划技术

### Automatic working condition planning technology

- 自动推荐最简便工况
- Automatically recommend the most proper working conditions
- 简化查询与设置工况过程
- Simplify searching and setting of working conditions

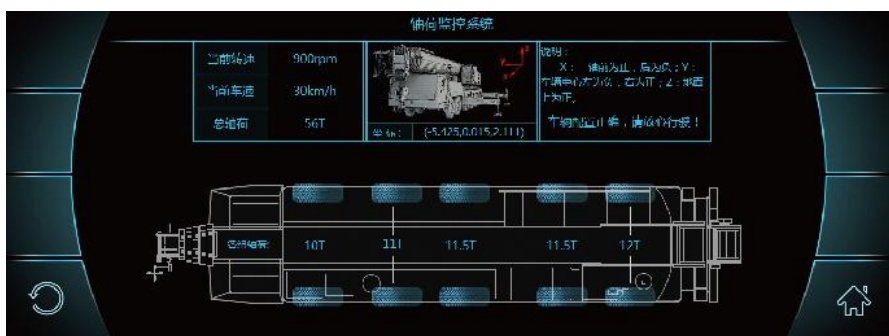




## 行驶智能、越野高效

### Intelligent travel and excellent off-road performance

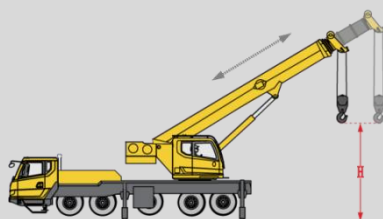
- 城镇道路模式、越野道路模式、高速公路模式、重载转场模式4种模式可供选择，行驶工况适应性更强。
- Four models are available to strengthen the acceptability of different working condition : urban road traver, cross country travel, highway travel and heavy-load site transfer.
- **轴荷监测技术**：匹配徐工自主开发的轴荷监控技术，防止局部车桥过载发生危险，该系统可实时监控整机行驶状态，匹配最安全的行驶控制策略，为驾驶人员行驶安全提供保障。
- With XCMG in-house-designed axle load monitoring technology adopted, real-time monitoring of driving state is available to prevent axle from overloading; with driving safety control strategy matched, driving safety is ensured.



## 起重变幅补偿控制技术

### Automatic elevating compensation technology

- 通过控制起重机变幅角度，自动实现对起落钩时，吊臂变形引起的幅度变化进行补偿。
- With elevation compensation technology applied, elevation compensation caused by boom deformation can be achieved during hook block raising and lowering process through regulating the elevation angle of the crane.



## 卷扬随动控制技术

### Winch servo control technology

- 在伸缩、变幅时，由控制系统自主控制卷扬，节省作业时间40%以上。
- With winch servo control technology applied, winch is automatically managed by control system during telescoping and elevating operation, which saves operation time over 40%.
- 具备变幅地面随动、伸缩地面随动、伸缩臂头随动三种模式
- There are 3 modes: THB, THG, EHG

# XCA180



## 驾驶室

### Driver's cab

- 12.3寸大镜面真彩色显示屏，显示更清晰
- 12.3 inch color display with large mirror surface makes indication clearer
- 主驾气悬浮座椅，自动调节高度
- An air-floating seat designed for the driver is automatically adjustable in height
- 副驾双座椅，可展开为卧铺
- A double-seat designed for the co-driver may be used as a berth for rest.
- 标配冷暖空调
- Heater and air conditioner are available.



## 徐工人机交互系统

### XCMG man-machine interactive system

- 行业首发，用轿车级别的人机交互系统，实现了操作人员与车辆的友好对话。轻松掌控车辆行驶、起重作业的各种状态信息，操纵更轻松、方便。
- First launched in the industry, man-machine interactive system with the level of a car enables friendly dialog between operator and the crane. Information about driving and lifting operations may be accessed easily, contributing to easier and more convenient operation.



## 新型外观造型与人性化设计

### New appearance and humanized design

- 新一代外观设计，整机刚劲有力，时尚的驾驶室与操纵室新外观，层次感与力量感完美结合；全面的人体工程学分析，人性化细节处理，打造驾驶轻松、操纵舒适，维护便捷的内在品质。
- New generation appearance design presents power and vigor, such as the appearance of driver's cab and operator's cab, delivering the feeling of perfect combination of streamlining and strength; with ergonomic analysis and personalized consideration of details integrated, a quality product is created that is convenient to maintain, easy to drive and comfortable to operate.

## 操纵室

### Operator's cab

- 全人机工学工作空间设计，作业更舒适，安全
- Ergonomically designed working space makes operation safer and more comfortable
- 10.4寸真彩色触摸屏
- 10.4-inch color touch screen displays
- 20°可俯仰操纵室
- Operator's cab can be tilted 20° backwards



- 安全保护、吊装动作、操纵环境三个区域，控制便捷
- Three control areas for safety protection, hoisting operation and operating environment bring convenient control



地址：中国江苏徐州市铜山路165号

Add : No.165 Tongshan Road Xuzhou Jiangsu China

电话(Tel) : +86-516-83462242/83462350

质量监督电话(Quality Inquiry Tel) : +86-516-87888268

备件电话(Spare Parts Tel) : +86-516-83461542

邮编(Post Code) : 221004

网址(Web) : [www.xcmg.com/qizhongji](http://www.xcmg.com/qizhongji)

**服务热线 Service Tel**

**400-110-9999**

**400-001-5678**



本印刷品不属于合同。出于产品不断改进的需要，我们保留对产品型号、参数、配置进行变更的权利，恕不另行通知。图片仅供参考，具体产品以实物为准。图片中产品可能并非标准配置，部分部件可能需要另行购置。办理牌照和上路行驶需遵守当地法规。

This print does not belong to the contract. We reserve the right to modify the design (such as product model, parameters and configuration) without notice for improvement. The pictures are just for reference. The product in the picture may not be standard configuration. Some parts need to be purchased separately. Conform to the local laws for license application and road traveling.