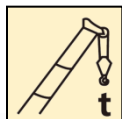


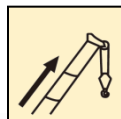
QY70KC汽车起重机 / Truck Crane

技术规格书

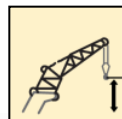
Basic technical specification



70t



48m



64.5m

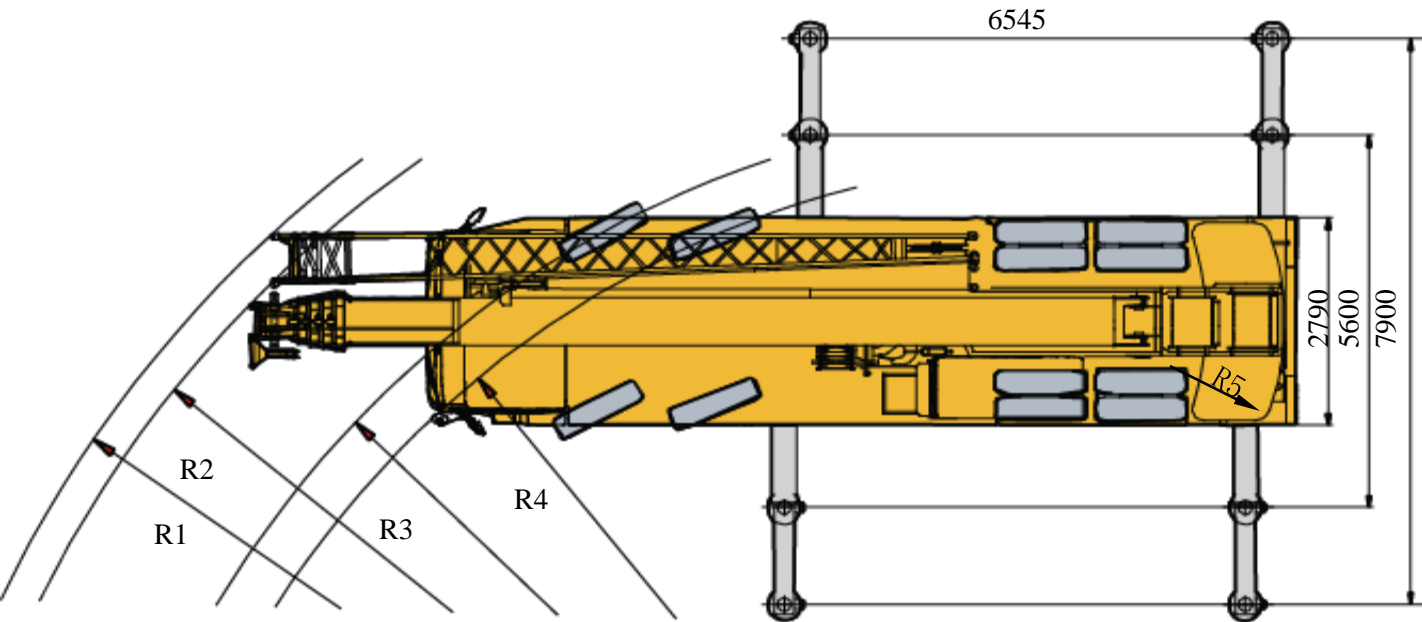
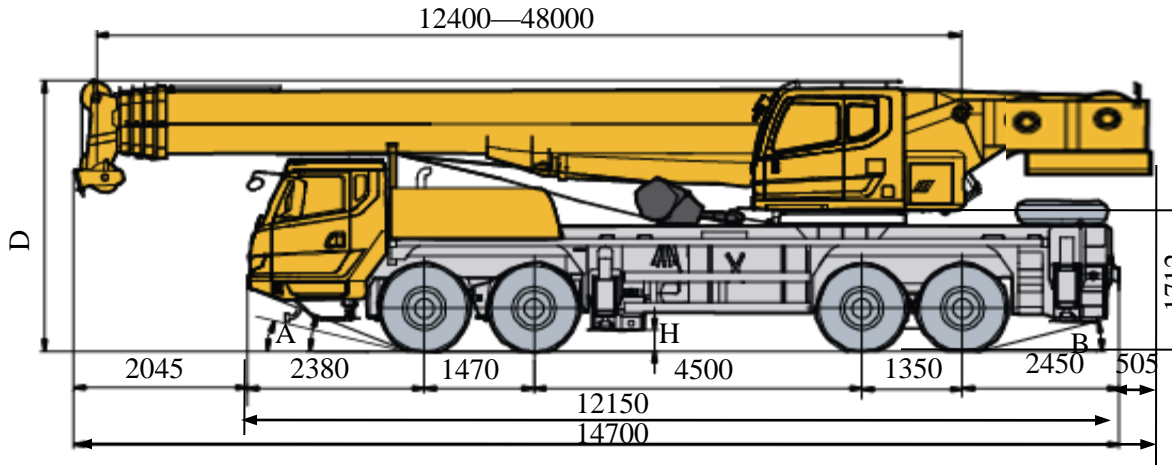


目录

Contents

目录	
Contents	
尺寸参数 Dimensions	3
技术规格 Technical specifications	4-7
重量/作业速度 Weight / Working speeds	8
平衡重 Counterweight	9
臂架组合方案 Boom / Jib combinations	10-11
主臂 Boom	12-15
副臂 Jib	16-17
符号标识 Description of symbols	18
主要技术参数表 Main Technical Data	19-20
注意事项 Notes	21

尺寸参数 Dimensions




	A	B	D	R1	R2	R3	R4	R5	H
12.00R24-20PR	19°	13°	3820	14950	14350	12000	11500	4540	307

技术规格

Technical specifications

	底盘	配置
车架	徐工设计、制造，全覆盖式走台板，防扭转箱型结构，高强度钢材制造。	●
支腿	4支腿，H形布置，采用双级水平支腿，水平伸缩和垂直伸缩由液压控制，底盘两侧装有电控操纵控制台，控制台板装有水平仪、照明灯和调速按钮，支腿油缸均设有单向阀，且垂直支腿带有双向液压锁。 支脚盘尺寸：450×450mm 最大起重量时支腿反力：720kN	●
发动机	D10.38-50，直列六缸水冷电控柴油发动机，重汽，额定功率276kW/1900rpm，最大扭矩1560Nm/1200-1500rpm，国五排放标准。 燃油箱容积：350L。	●
变速箱	陕齿机械式变速箱，9个前进档，1个倒档带同步器。	●
车桥	名牌厂家高强度车桥，1,2桥转向，3,4桥转向驱动。	●
悬挂	桥采用钢板弹簧。中后桥采用橡胶弹簧悬架加V型推力杆结构，增加底盘行驶稳定性，减少轮胎的磨损。	●
轮胎	12个轮胎，1个备胎， 轮胎规格：12.00R24	●
制动	行车制动：双回路气压制动，作用于所有车轮。 驻车制动：弹簧储能制动，作用于2,3,4轴车轮。 辅助制动：发动机排气制动和缓速制动。	●
转向	1、2桥机械转向+液压助力。	●
驾驶室	新型复合结构驾驶室，全封闭、装备豪华舒适。性能上：优越的密封性和防腐蚀、防震设计；配置大视野的前挡风安全玻璃、后视镜，电控洗涤器，电子门窗升降器，带有除霜风挡的室内空气加热器，收音机、丝网地垫等。副驾双座椅，可展开为简易卧铺。 2公斤灭火器；标配冷暖空调。	●
电气系统	直流24伏特，串联12伏特的电池组2个。 发电机，28伏特-80安培。	●

	上车	配置
结构	徐工设计、制造，高强度钢材制造。	●
液压系统	底盘发动机驱动变量柱塞泵，用于起升、变幅、伸缩。负载敏感式比例多路换向阀带有抗冲击阀、防气蚀阀；风冷式液压油散热器； 液压油箱容积：972L	●
操纵方式	液控先导操纵系统，由左右2个操纵手柄控制，由液压泵和比例阀进行液压先导式控制起重机的全部动作	●
主起升机构	液压控制调速，装有双折线绳槽卷筒，由液压马达通过行星齿轮减速器驱动，内置常闭式制动器并带有平衡阀；	●
副起升机构	液压控制调速，由液压马达通过行星齿轮减速器驱动，内置常闭式制动器并带有平衡阀，装有双折线绳槽卷筒。	●
回转机构	四点接触球式回转支承，由液压马达驱动行星齿轮回转机构减速器驱动，可连续回转360°；具有动力控制或自由回转的功能可无级调速；回转杆设有鸣响开关；	●
变幅机构	单支双作用前置液压变幅油缸，带有平衡阀	●
操纵室	新型钢制操纵室，装有无视野死角的前景窗，安全玻璃，车窗装有遮阳板，推拉式车门，座椅靠背可倾斜定位，操纵杆安装在座椅两侧的扶手台上；带推拉踏板；前窗顶窗装有雨刮器；标配冷暖空调；	●
安全装置	液压平衡阀；液压溢流阀；液压双向锁；力矩限制器；三圈保护器，防止钢丝绳过放；臂头设置高度限位，防止钢丝绳过卷三色报警灯；	●
选装配置	上车水平仪	○

技术规格

Technical specifications

 上车	配置
起重钩	70t钩 ●
	35t 钩 ○
	5t钩 ●
组合配重	4.5t ●
	5t ●
	1.5t ●
总重11t, 共有1.5t、6t、11t共3种组合方式。	
 臂架系统	配置
主臂	5节, “U”形截面的筒形焊接结构。 双缸绳排伸缩机构 主臂长度: 12.4m ~ 48m。 ●
副臂	由连接架、旋转架和两节桁架结构折叠式副臂组成, 具有0°、15°、30°三种安装角, 收存于主臂旁。 副臂长度: 9.5m、16m ●
臂端单滑轮	单滑轮, 安装在主臂顶端用于单股钢丝绳 绳起重作业, 起重性能与主臂相同, 但最大起重量不超过5t。 ●


产品各部件明细如上所述, 具体部件明细请参照产品报价单


符号说明:


- —— 表示标准配置;
- —— 表示选装配置。

技术规格

Technical specifications


 Chassis	Configuration
Frame Designed and manufactured by XCMG, with all covered walking surface, anti-torsion box structure and optimal load-bearing structure design, made of imported high strength steel.	●
Outrigger Four outriggers are arranged in H shape longitudinally, with outrigger beams and jacks hydraulically controlled by control levers. Control levers are located on both sides of the chassis, with a luminous level gauge equipped. Check valve is fitted in each outrigger cylinder, and double-way valve is fitted in jack cylinder. Float dimension: 450×450mm Reaction force of outrigger at max. lifting load:720KN	●
Engine D10.38-50, in-line six-cylinder water-cooled EFI diesel engine, manufactured by China National Heavy Duty Truck Group HANGZHOU Engine sales co.LTD, rated power 276kW /2200rpm, max. standatorque 1560Nm/1200-1500rpm, the national V emission rds. Fuel tank capacity : 350L	●
Gearbox Electric controlled transmission imported from SHANXI FAST GEAR Co., Ltd, with mechanism control, equipped with retarded brake, with 9 for-ard gears and 1 reverse gears available	●
Alxes High strength axle with reliable performance, adopted oversea advanced technology and produced by famous company.	●
Suspension Front suspension: leaf spring. Middle and rear axles: rubber spring suspension and V-type upper thrust lever, which will improve chassis driving stability and reduce tire wear.	●
Tires 12.00R24 , ×12 Reserve:12.00R24 , ×1	●
Brakes Service brake.....pedal operated double-circuit air pressure brake. The first circuit acts on wheels of axles 1 and 2; the second circuit acts on wheels of axles 3 and 4. Parking brake.....air-release brake, acting on axles2, 3 and 4 by the spring energy storing air chamber on each axle. Auxiliary brakeengine exhaust brake, which is safe and reliable, and will prolong the service life of brake lining.	●


 Chassis	Configuration
Steering Mechanical steering system with hydraulic boosting device.	●
Cab New enclosed cab, luxury and comfort. It is designed to be leakproof, anti-corrosive and shockproof. It is equipped with a windshield offering outstanding visibility, rear mirrors, electric control washer, electronic lifters of doors and windows, indoor air humidifier with windscreen defroster, air conditioner, radio cassette player, etc. A double-seat designed for the co-driver may be used as a berth for rest. Air conditioner and fire extinguisher of 2 kg are standard.	●
Electric 24V DC, negative ground, 2 batteries.	●

 Superstructure	Configuration
Frame Designed and manufactured by XCMG; Made of high-strength steel	●
Hydraulic system The variable plunger pump driven by engine is used to control hoisting, elevating and telescoping; and the gear pump is used for slewing operations. Load sensitive proportional multi-way change valve, Air-cooled hydraulic oil radiator; Volume of hydraulic oil tank: 972L	●
Operating mode Hydraulic pilot control of all crane movements using two control levers. All crane movements are controlled by hydraulic pump and proportional valve.	●
Main winch system Hydraulic controlled speed regulation, groove drum is equipped, driven by hydraulic motor through planetary gear reducer, and built-in normally closed brake and counterbalance valve are available.	●
Auxiliary winch system Hydraulic controlled speed regulation, groove drum is equipped, driven by hydraulic motor through planetary gear reducer, and built-in normally closed brake and counterbalance valve are available.	●

技术规格

Technical specifications

 Superstructure	Configu- ration
Elevati- ng system	A single-cylinder with balance valve equipped is used for front support elevation. ●
Operat- or's Cab	New fully-enclosed steel tiltable cab with a full-view front window. Safety glass and sun shield are used for windows. Wipers are fitted for the windshield and roof window. The cab features a new ergonomic seat design with backrest adjustment and armrests with joysticks fitted. A sliding door and a pull-out step are available. Air conditioner are available. Fire extinguisher 2kg ●
Hook block	70 t hook block ●
	35 t hook block ○
	5t hook block ●
Safety devices	Double-way hydraulic valve; LMI; spring aligning device for joystick; Lowering limiter for preventing wire rope from over-releasing; Anti-two block at boom head for preventing wire rope from over-winding; tri-color warning lamp. ●
	Level gauge ○
Combin- ed counter- weight	Total weight is 11t. ●
	Including 3 pieces (4.5t, 5t, 1.5t) 4.5t ●
	Counterweight configurations: , 1.5 t, 6 t, 11t. 5t ●
	1.5t ●

 Boom and jib system	Config- uration
Boom	5-section, U-shape cross section, welding str-ucture. Boom length: 12.4m ~ 48m. ●
Jib	It is stowed beside the boom, consisted of a connecting bracket, a rotating bracket and two lattice bi-fold jibs with jib offset angle: 0°, 15°, 30 Jib length 9.5m/16m. ●
Single top	Boom single top is installed on the top of boom and used for lifting operation of single line wire rope. The lifting performance of boom single top is the same with boom, but max. load capacity cannot exceed 5000kg. ●

Product parts list is as mentioned above. Please refer to the product quotation for specific parts.

Symbol explanation:

- —it means the standard configuration;
- —it means the optional configuration.

重量 Weight



车桥 Axle	1	2	3	4	总重量 Total weight
t	9.45	9.45	12.95	12.95	44.8




1) 转台尾部携带1.5吨固定平衡重，其余平衡重不带；主吊钩固定在车架中部，副钩固定在车架尾部；
1) The 1.5 ton Counterweight should be put on the chassis deck, not taking any other counterweight and rearview mirror;
The main block should be fastened in front of the chassis cab, and not taking any other blocks.








吊钩 Hook	倍率 No. of lines	吊钩重量 Weight kg	吊钩尺寸 Dimensions mm	备注 Remarks
70t	12	700	1735×554×520	单钩 Single hook , 标配 Standard
35t	7	370	1600×520×370	单钩 Single hook , 选配 Optional
5t	1	150	717×370×370	单钩 Single hook , 标配 Standard

作业速度 Working speeds

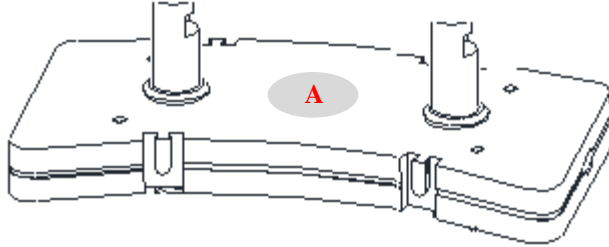
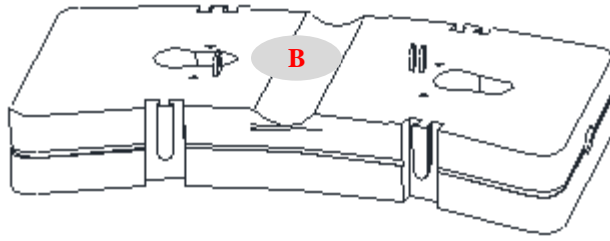
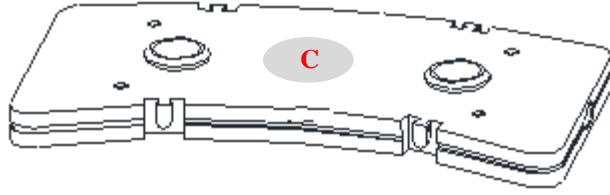


		
12.00 R 24	1 ~ 90 km/h	45%



作业机构 Drive	作业速度 Working speed	最大单绳拉力 Max. single line pull	钢丝绳直径/长度 Rope diameter/ length
	0-135 m/min , 单绳 , 第四层 m/min, single line, 4th layer	6.54t	20 mm/240m
	0-90 m/min , 单绳 , 第四层 m/min, single line, 4th layer	6.5t	20 mm/180 m
	0-2 r/min		
	从-2°抬起至81°约55s Approx. 55s for boom elevation from -2° to 81°		
	从12.4m伸出至48m约110s Approx. 500s for boom extension from 12.4m to 48m		

平衡重 Counterweight



平衡重 Counterweight	A	B	C
尺寸 (长×宽×高) m Size (L×W×H) m	2700×1490×270	2700×1490×300	1890×1300×110
重量 t Weight t	4.5	5	1.5

工况模式 Working mode	11t	6t	1.5t
组合形式 Combinations	A+B+C	A+C	C

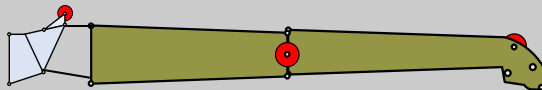
臂架组合方案

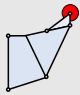


Boom / Jib combinations

副臂 - 9.5m
Jib - 9.5m



副臂 - 16m
Jib - 16m



部件 Component	结构形式 Structure	尺寸 (长×宽×高) mm Size (L×W×H) mm	重量 kg Weight kg
连接架 Connection bracket		1910×740×1050	218
一节副臂总成 First jib section assembly		8820×620×900	484
二节副臂总成 Second jib section assembly		6520×300×430	254

臂架组合方案

Boom / Jib combinations

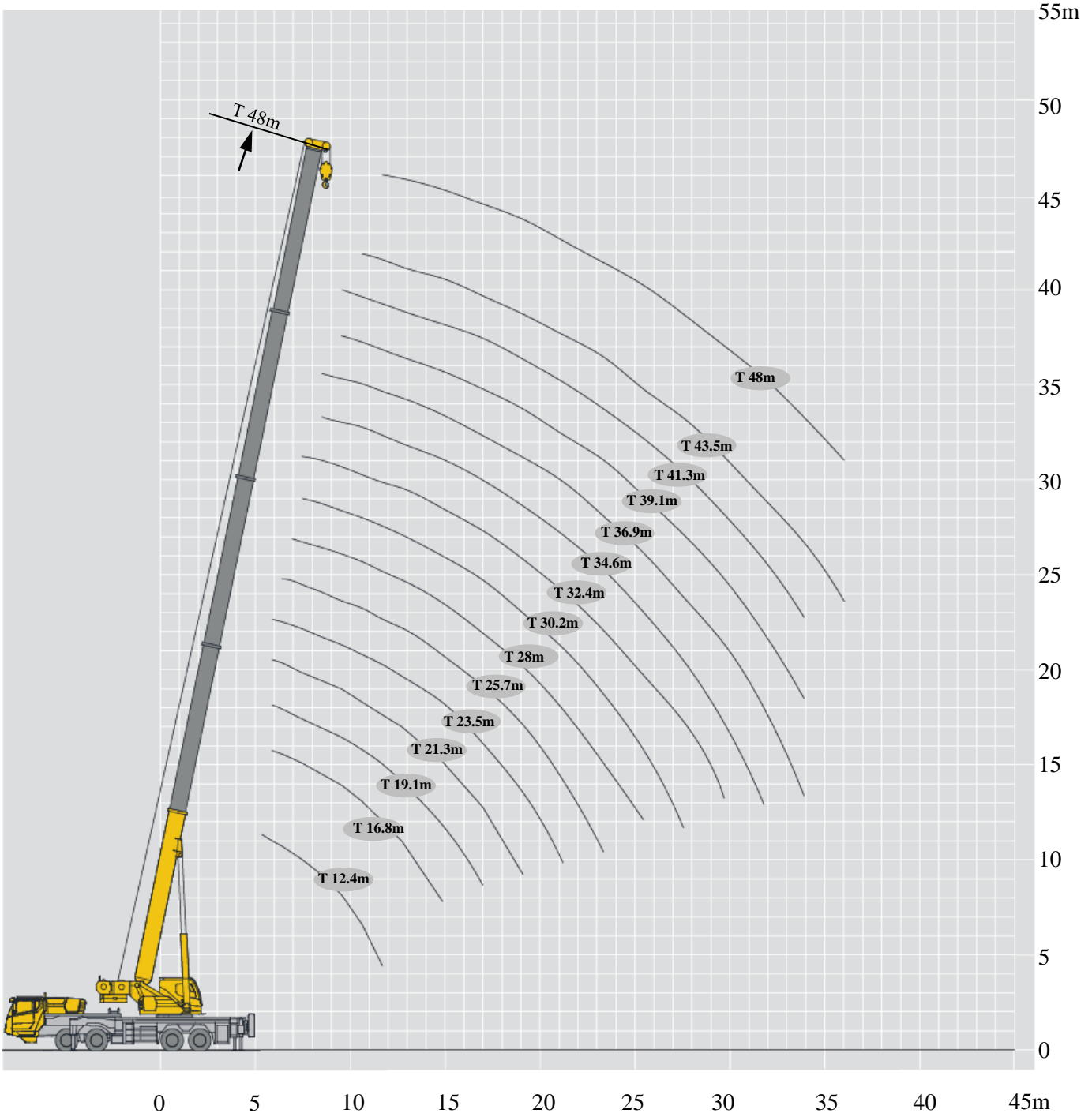


主臂
Telescopic boom

T : 12.4~48m

副臂
Jib

T : 48m
J : 9.5~16 m



起重性能表

Lifting capacities

T 12.4~48m

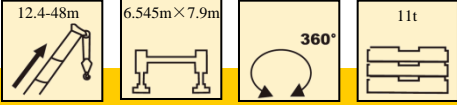
	12.4-48m		6.545m×7.9m		360°		1.5t															
	12.4m	16.8m	19.1m	21.3m	23.5m	25.7m	28m	30.2m	32.4m	34.6m	36.9m	39.1m	41.3 m	43.5	48m							
3	70.0															3						
3.5	70.0															3.5						
4	70.0	63.3	35.0	46.0												4						
5	55.0	58.0	34.5	45.0	36.5	29.1	35.0									5						
6	47.0	46.0	32.3	40.0	34.5	27.2	34.7	28.1	20.1							6						
7	33.5	32.9	30.6	32.4	32.6	25.1	31.9	26.6	18.8	25.4						7						
8	24.9	24.4	27.3	24.0	26.4	23.6	25.8	25.2	17.8	23.3	17.9	14.1	16.1			8						
9	19.4	18.9	21.6	18.5	20.8	22.4	20.2	21.9	16.7	21.3	17.1	13.3	16.1	12.3		9						
10		15.1	17.6	14.7	16.9	18.6	16.3	17.8	15.8	17.3	16.3	12.2	16.1	11.8	11.1	10						
12		10.0	12.4	9.6	11.7	13.3	11.2	12.6	13.8	12.1	13.2	11.1	12.2	11.0	10.5	12						
14			9.0	6.4	8.3	9.9	7.9	9.2	10.4	8.7	9.8	10.2	8.8	9.6	9.3	14						
16				4.3	6.1	7.6	5.6	6.9	8.0	6.4	7.4	8.0	6.5	7.4	7.0	16						
18					4.5	5.9	4.0	5.3	6.3	4.8	5.8	6.3	4.9	5.8	5.4	18						
20						4.6	2.8	4.0	5.0	3.6	4.5	5.0	3.7	4.5	4.2	20						
22							1.9	3.1	4.0	2.6	3.5	4.0	2.8	3.5	3.2	22						
24								2.3	3.3	1.9	2.8	3.2	2.0	2.7	2.4	24						
26									2.6	1.2	2.1	2.5	1.4	2.1	1.8	26						
28										0.8	1.6	2.0	0.8	1.6	1.3	28						
30											1.1	1.5	0.6	0.9	0.8	30						

	12.4-48m		6.545m×7.9m		360°		6t															
	12.4m	16.8m	19.1m	21.3m	23.5m	25.7m	28m	30.2m	32.4m	34.6m	36.9m	39.1m	41.3 m	43.5	48m							
3	70.0															3						
3.5	70.0															3.5						
4	70.0	63.3	35.0	46.0												4						
5	55.0	58.0	34.5	45.0	36.5	29.1	35.0									5						
6	47.0	46.0	32.3	40.0	34.5	27.2	34.7	28.1	20.1							6						
7	40.0	39.3	30.6	38.0	32.6	25.1	31.9	26.6	18.8	25.4						7						
8	30.0	29.4	30.0	29.0	31.0	23.6	29.5	25.2	17.8	23.3	17.9	14.1	16.1			8						
9	23.5	23.1	25.8	22.7	24.9	22.4	24.4	24.0	16.7	21.9	17.1	13.3	16.1	12.3		9						
10		18.6	21.2	18.2	20.4	21.2	19.8	21.4	15.8	20.5	16.3	12.2	16.1	11.8	11.1	10						
12		12.8	15.1	12.5	14.4	16.0	13.9	15.3	14.3	14.8	14.8	11.1	15.1	11.0	10.5	12						
14			11.4	8.9	10.7	12.2	10.3	11.5	12.6	11.1	12.1	10.2	11.2	10.2	10.3	14						
16				6.3	8.2	9.6	7.7	9.0	10.0	8.5	9.5	9.4	8.7	9.6	9.0	16						
18					6.2	7.7	5.8	7.0	8.1	6.6	7.5	8.0	6.7	7.6	7.1	18						
20						6.2	4.4	5.6	6.6	5.1	6.1	6.5	5.3	6.1	5.8	20						
22							3.3	4.4	5.4	4.0	4.9	5.5	4.2	5.0	4.6	22						
24								3.5	4.5	3.1	4.0	4.5	3.3	4.0	3.7	24						
26									3.7	2.4	3.2	3.8	2.6	3.3	2.9	26						
28										1.7	2.6	3.1	2.0	2.7	2.3	28						
30											2.0	2.6	1.4	2.2	1.8	30						
32												2.1	1.0	1.7	1.3	32						
34														1.2	0.9	34						
36															0.7	36						

起重性能表

Lifting capacities

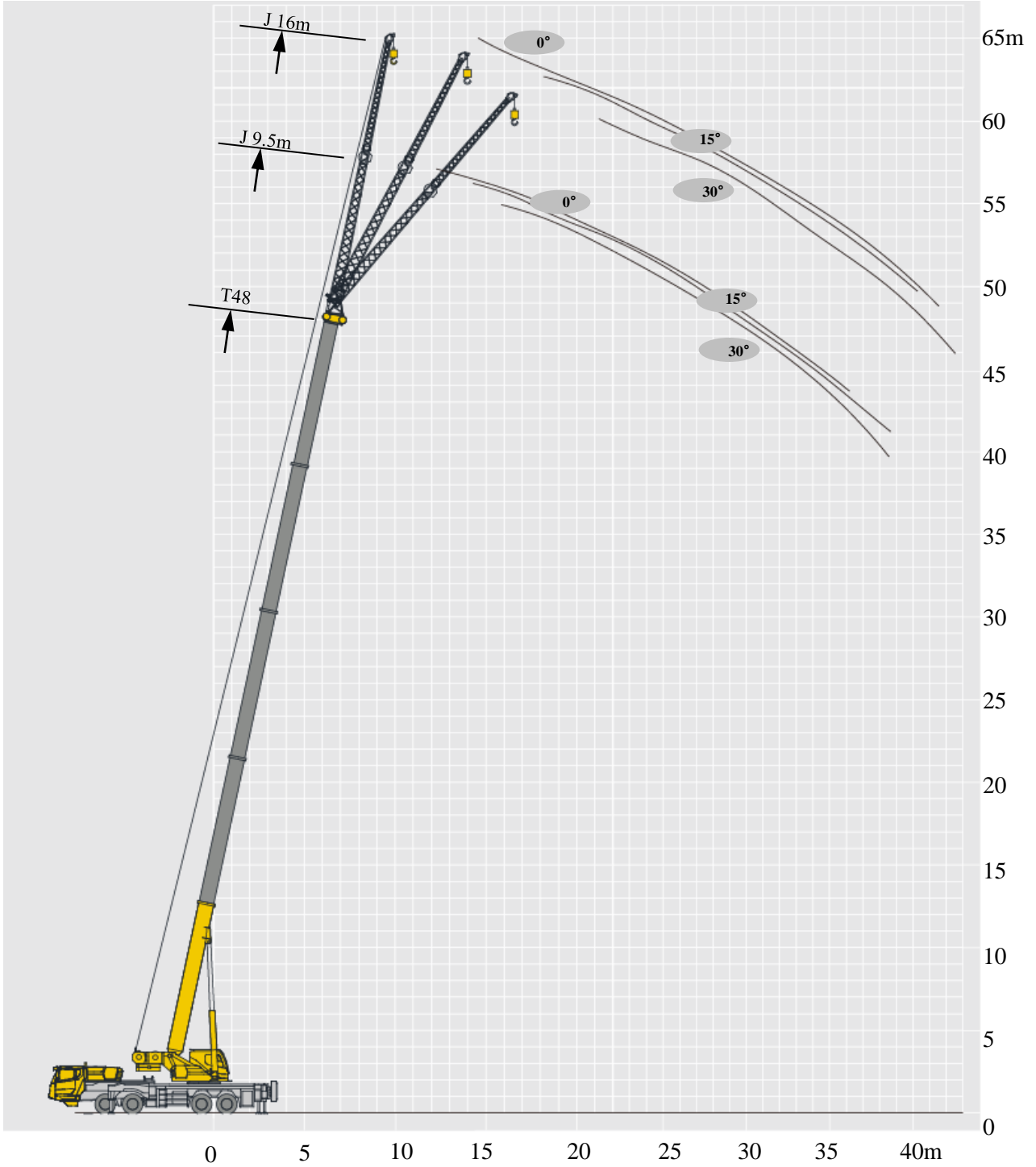
T 12.4~48m



	12.4m	16.8m	19.1m	21.3m	23.5m	25.7m	28m	30.2m	32.4m	34.6m	36.9m	39.1m	41.3 m	43.5	48m	
3	70															3
3.5	70															3.5
4	70	63.3	35	46												4
5	55	58	34.5	45	36.5	29.1	35									5
6	47	46	32.3	40	34.5	27.2	34.7	28.1	20.1							6
7	41	40	30.6	38	32.6	25.1	31.9	26.6	18.8	25.4						7
8	33	33	30	32	31	23.6	29.5	25.2	17.8	23.3	17.9	14.1	16.1			8
9	28	27.7	27.6	27.3	29.5	22.4	27.5	24	16.7	21.9	17.1	13.3	16.1	12.3		9
10		22.5	24.8	22.1	24.3	21.2	23.7	23	15.8	20.5	16.3	12.2	16.1	11.8	11.1	10
12		15.8	18.1	15.5	17.4	19	16.9	18.3	14.3	17.8	14.8	11.1	15.1	11.0	10.5	12
14			13.8	11.3	13.1	14.6	12.7	14	12.7	13.5	13.3	10.2	14.0	10.2	10.3	14
16				8.5	10.2	11.6	9.8	11	11.4	10.6	11.5	9.4	10.8	9.6	9.7	16
18					8.1	9.5	7.7	8.9	9.9	8.4	9.3	8.1	8.6	8.9	9.2	18
20						7.8	6.1	7.2	8.2	6.8	7.7	7.4	7.1	7.7	7.3	20
22							4.8	5.9	6.9	5.5	6.4	6.7	5.9	6.5	6.1	22
24								4.9	5.9	4.5	5.4	5.8	4.9	5.4	5.1	24
26									5	3.6	4.5	5.0	3.9	4.6	4.2	26
28										2.9	3.8	4.1	3.2	3.9	3.5	28
30											3.2	3.6	2.5	3.2	2.9	30
32												3.1	2.0	2.7	2.4	32
34														2.3	1.9	34
36															1.6	36

起升高度曲线图 Lifting heights

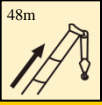

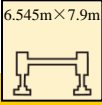

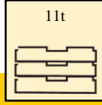
副臂
Jib

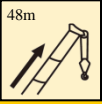

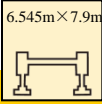

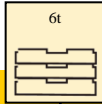


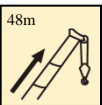
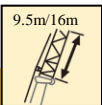
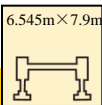
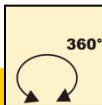
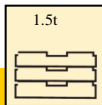
起重性能表

Lifting capacities

J 9.5m/16m

	    						
	9.5m			16m			
	0°	15°	30°	0°	15°	30°	
80	5.0	3.5	3.0	3.2	2.3	1.6	80
78	5.0	3.5	3.0	3.2	2.3	1.4	78
76	5.0	3.5	2.8	3.1	2.1	1.3	76
74	4.9	3.4	2.7	3.0	2.1	1.2	74
72	4.5	3.1	2.6	3.0	2.0	1.2	72
70	4.1	3.0	2.5	2.8	1.8	1.1	70
68	4.0	3.0	2.4	2.6	1.6	1.1	68
66	3.7	3.0	2.3	2.4	1.6	1.0	66
64	3.3	2.7	2.2	2.2	1.5	1.0	64
62	2.9	2.5	2.2	2.0	1.5	0.8	62
60	2.5	2.3	2.1	1.8	1.4	0.8	60
58	2.2	2.0	1.9	1.7	1.4		58
56	1.9	1.8	1.6	1.6	1.3		56
54	1.6	1.5	1.3	1.3	1.2		54
52	1.4	1.3	1.2	1.1	1.1		52
50	1.0	0.9	0.8	0.9	0.9		50

	    						
	9.5m			16m			
	0°	15°	30°	0°	15°	30°	
80	5.0	3.5	3.0	3.2	2.3	1.6	80
78	5.0	3.5	3.0	3.2	2.3	1.4	78
76	5.0	3.5	2.8	3.1	2.1	1.3	76
74	4.9	3.4	2.7	3.0	2.1	1.2	74
72	4.5	3.1	2.6	3.0	2.0	1.2	72
70	3.9	3.0	2.5	2.8	1.8	1.1	70
68	3.3	3.0	2.4	2.6	1.6	1.1	68
66	3.1	2.5	2.3	2.4	1.6	1.0	66
64	2.7	2.1	2.0	1.9	1.5	1.0	64
62	2.2	2.0	1.7	1.6	1.3	0.8	62
60	1.8	1.6	1.5	1.5	1.1	0.8	60
58	1.4	1.3	1.4	1.3	1.1		58
56	1.2	1.1	1.0	1.0	0.9		56

	    						
	9.5m			16m			
	0°	15°	30°	0°	15°	30°	
80	5.0	3.5	3.0	3.2	2.3	1.6	80
78	5.0	3.5	3.0	3.2	2.3	1.4	78
76	5.0	3.5	2.8	3.1	2.1	1.3	76
74	4.9	3.4	2.7	3.0	2.1	1.2	74
72	4.2	3.1	2.6	3.0	2.0	1.2	72
70	3.4	2.5	2.5	2.6	1.8	1.1	70
68	2.7	2.3	2.2	2.1	1.6	1.1	68
66	2.1	1.8	1.7	1.7	1.4	1.0	66
64	1.5	1.4	1.3	1.3	1.0	0.9	64
62	1.1	1.1	1.0	1.0	0.9	0.8	62
60	0.8	0.8	0.7	0.8	0.7	0.6	60

符号标识

Description of symbols

	上车 Superstructure		底盘 Chassis
	起重能力 lifting capacity		车桥 Axle
	吊臂长度 Boom length		行驶速度 Driving speed
	工作幅度 Radius		爬坡能力 Gradability
	吊臂仰角 Boom position		轮胎 Tyres
	主臂起升高度 Hoist height with Boom		支腿 Outriggers
	固定副臂长度 Fixed jib length		吊钩 Hook block
	副臂安装角 Jib offset angle		平衡重 Counterweight
	副臂起升高度 Hoist height with jib		卷扬 Winch
	独立臂头 Independent jib head		360°全回转 360° rotation

主要技术参数

Main Technical Data

类别 Category	项目 Item	单位 Unit	参数 Parameter	
尺寸参数 Dimensions	外形尺寸 (长×宽×高) Outline size (length× width× height)	mm	14700×2790×3820	
	轴距 Wheel base	mm	1470+4500+1350	
	轮距 (前/后) Track (Front/ Rear)	mm	2353/2325(美驰) , 2291(大江)	
	前悬/后悬 Front/ Rear overhang	mm	2380/2450	
	前伸/后伸 Front/ Rear extension	mm	2045/505	
重量参数 Weight	最大允许总质量 Total vehicle mass in travel configuration	kg	44800	
	轴荷 Axle load	一轴 1st axle	kg	9450
		二轴 2nd axle	kg	9450
		三轴 3rd axle	kg	12950
		四轴 4th axle	kg	12950
动力参数 Power	发动机型号 Engine model	—	D10.38-50	
	额定功率/转速 Engine rated power/rpm	kW/(r/min)	276/1900	
	最大净功率/转速 Max. net power/rpm	kW/(r/min)	274/1900	
	最大输出扭矩/转速 Engine rated torque/rpm	N.m/(r/min)	1560/1200-1500	
行驶参数 Travel	最高车速 Max. travel speed	km/h	≥90	
	最低稳定车速 Min. travel speed	km/h	1.7 ~ 3	
	最小转弯直径 Min. turning diameter	m	≤24	
	臂头最小转弯直径 Min. turning diameter at boom tip	m	≤25.2	
	最小离地间隙 Min. ground clearance	mm	307	
	接近角 Approach angle	°	19	
	离去角 Departure angle	°	13	
	制动距离 (制动初速度为30km/h) Braking distance (at 30 km/h)	m	≤10	
	最大爬坡能力 Max. grade ability	%	41	
	百公里油耗 Fuel consumption per 100 km	L	43	
噪音 Noise	加速行驶机外噪声 Exterior noise level	dB(A)	≤84	
	驾驶员耳旁噪声 Noise level at seated position	dB(A)	≤90	

主要技术参数

Main Technical Data

类别 Category	项目 Item		单位 Unit	参数 Parameter	
主要性能参数 Main performance	最大额定总起重量 Max. total rated lifting capacity		t	70	
	最小额定工作幅度 Min. rated working radius		m	3.0	
	转台尾部回转半径 Turning radius at turntable tail	平衡重处 Counterweight	mm	4350	
		副卷处 Auxiliary winch	mm	4545	
	最大起重力矩 Max. load moment	基本臂 Base boom	kN.m	2812	
		最长主臂 Fully-extended boom	kN.m	1622	
		最长主臂+副臂 Fully-extended boom + Jib	kN.m	554	
	支腿跨距 Outrigger span	纵向 Longitudinal	m	6.545	
		横向 Lateral	m	7.9 (5.6)	
	起升高度 Hoist height	基本臂 Base boom	m	12.4	
		最长主臂 Fully-extended boom	m	55.4	
		最长主臂+副臂 Fully-extended boom + Jib	m	70.0	
	起重臂长度 Boom length	基本臂 Base boom	m	12.7	
		最长主臂 Fully-extended boom	m	48	
		最长主臂+副臂 Fully-extended boom + Jib	m	64.5	
	副臂安装角 Jib offset angle		°	0、15、30	
工作速度参数 Working speed	起重臂起臂时间 Boom raising time		s	≤55	
	起重臂全伸时间 Boom fully extended time		s	≤110	
	最大回转速度 Max. slewing speed		r/min	≥2.0	
	支腿收放时间 Outrigger extending and retracting time	水平支腿 Outrigger beam	收 Retracting	s	30
			放 Extending	s	30
		垂直支腿 Outrigger jack	收 Retracting	s	30
			放 Extending	s	40
起升速度 (单绳, 第四层, 空载) Hoisting speed (single line, 4th layer, no load)	主起升机构 Main winch		m/min	135	
	副起升机构 Auxiliary winch		m/min	90	
噪声 Noise	机外辐射 Exterior noise level		dB (A)	109	
	司机位置处 Noise level at seated position		dB (A)	85	

注意事项

Notes

1. 表中额定总起重量值，是在平整的坚固地面上本起重机能够保证的最大总起重量，包括吊钩和吊具的重量，所以为了估算重物重量，必须减去上述的装置重量。
2. 表中的工作幅度为起吊重物离地时起重物到起重机回转轴线的水平距离，是包括起重臂变形量在内的实际值，因而起吊前应考虑起重臂变形量。
3. 只允许在5级(瞬时风速14.1m/s，风压125N/m²)风以下进行作业。
4. 吊重前操作者必须对物体的重量和工作范围了解后选择合适的作业工况，严禁超出表中的数值。幅度及臂长在相邻两个数值之间时，应依据两个数值中较小值确定起重作业。
5. 应按主臂仰角范围作业，即使是空载，也不应使主臂仰角处于范围外，谨防整机倾翻。
6. 表中的主臂长度应要按照每节臂的伸缩要求进行伸出。

1. The total rated loads given in the rated load charts are the maximum lifting capacity when the crane is set up on firm and level ground, which includes the weight of the hook block and slings. The weight of above-mentioned devices should be deducted from the rated lifting load.
2. The working radius shown in the rated load charts is the radius when the load is lifted off the ground, and it is the actual value including loaded boom deflection. Take boom deflection into consideration before beginning a lifting operation.
3. A lifting operation is permissible only when the wind force is below grade 5 (instantaneous wind speed is 14.1 m/s, wind pressure is 125 N/m²).
4. Before beginning lifting operation, the operator should know the weight of the load to be lifted and its working range, and then select proper working conditions. Never operate the crane beyond the limit shown in the chart. Use the lower value from the chart when the boom length or working radius is between the range of values.
5. Observe the boom angle limit. Never operate the crane with the boom angle beyond the recommended limit even if a load is not being carried. Otherwise, the crane will tip.
6. The boom should be extended according to the telescoping code shown by digits, which means the percentage of boom sections extended.



地址：江苏省徐州市经济技术开发区高新路68号
Add : No. 68 Gaoxin Road,
Economic and Technological Development Zone,
Xuzhou, Jiangsu, China
电话(Tel) : +86-516-83462242/83462350
质量监督电话(Quality Inquiry Tel) : +86-516-
87888268
备件电话(Spare Parts Tel) : +86-516-83461542
邮编(Post Code) : 221004
网址(Web) : www.xcmg.com/qizhongji

服务热线 Service Tel

400-110-9999

400-001-5678



本印刷品不属于合同。出于产品不断改进的需要，我们保留对产品型号、参数、配置进行变更的权利，恕不另行通知。图片仅供参考，具体产品以实物为准。图片中产品可能并非标准配置，部分部件可能需要另行购置。办理牌照和上路行驶需遵守当地法规。

This print does not belong to the contract. We reserve the right to modify the design (such as product model, parameters and configuration) without notice for improvement. The pictures are just for reference. The product in the picture may not be standard configuration. Some parts need to be purchased separately. Conform to the local laws for license application and road traveling.