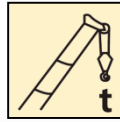


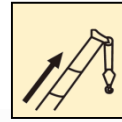
QY70KC 汽车起重机 / Truck Crane

产品简介

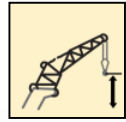
Brief introduction



70t



48m



64.5m



QY70KC广泛适用于建筑工地、城市改造、交通运输、港口、桥梁、油田、矿场等场所和其它复杂的作业环境

QY70KC Truck crane is widely used for the lifting operations in general engineering projects, such as construction site, urban renewal, communication and transportation, ports, bridge, oilfields and mine, and complex working environments.



- 48m超强主臂，高频工况性能更强劲
 48 m super boom, stronger performance in high-frequent use working conditions
 五节48m主臂，起重性能领先行业同吨级新品8%，中长臂、全伸臂高频工况性能领先10-15%。
 Five-section boom of 48 m has the lifting performance of 8% over the cranes in its class and 10-15% higher when the boom is partially and fully extended and used frequently.
- 黄金动力传动系统，动力更澎湃
 Optimal power transmission system
 越野型四桥专用G类底盘，搭载低速大扭矩动力传动系统，兼顾车辆低速爬坡性能和高速转场性能，最大爬坡能力41%，最高行驶车速90km/h。
 Off-road specialized four-axle G-class chassis with low speed large torque power transmission system equipped, features higher climbing capacity at lower speeds and job site transfer capacity at higher speeds, i.e. maximum grade ability 41% and a maximum travel speed of 90 km/h.
- 专有复合操控技术，效率更高
 Exclusive control technology of simultaneous movements, more efficient
 G一代双变量泵+阀后补偿负载敏感系统，吊装作业微动性及操作平顺性优异，作业效率行业领先，实现经济高效与精准操控的完美结合。
 G1 generation double-variable pump along with after-valve compensation load-sensitive system contributes to fine control of lifting operation, smooth operation and industry-leading working efficiency, leading to economical, efficient and precise control.
- 高等级电气防护，作业更可靠
 High grade electrical protection, more reliable operation
 电气系统可靠性全面提升：防水防尘插接件、线束分支金属分线器防护、耐高温150℃闭口波纹管，防护等级达到IP67
 Improved electrical system reliability: waterproof and dustproof inserts, high temperature-resistant corrugated pipes, special wire harness closure sleeves and rubber sleeves are used, excellent dust protection, protection level up to IP67.
- 精雕细琢，细节更精美
 Every detail is crafted
 整机外观涂装全新升级，驾驶室内饰全面提升：精工高光金属拉丝质感装饰、真皮触感软包仪表台、阻燃防滑易除尘精品地垫、热压成型封边无纺布顶棚；
 Upgraded appearance coating and improved decoration in driver's cab: artistic decoration, soft packaging instrument station, flameproof, antiskid and easy to clean floor mats, and hot press molding ceiling.
- 贴心人性化，使用更便捷
 Consideration for humanized details, easier and faster operation
 高光LED支腿照明灯，亮度提升40%，寿命提升五倍；大视野卷扬监视镜，卷扬工作更安全；副臂双尖销轴设计，穿轴更方便；
 High-luminance LED outrigger working lamps, 40% increase in brightness, five-times improvement in service life; Wide view winch monitoring mirror, safer winch operation; Double-cone pins designed for jib, easier to insert pins;





QY70KC



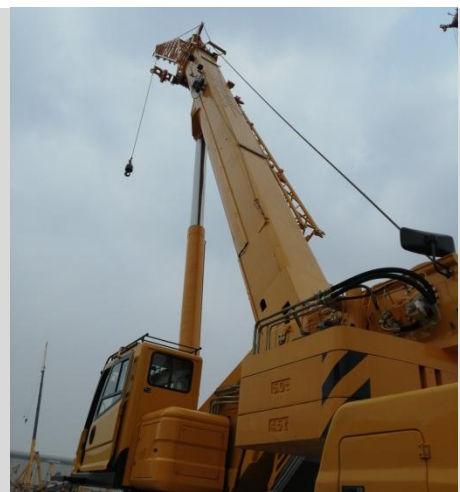
QY70KC



主起重臂：

Boom:

- 5节U型主臂+双缸动力同步伸缩
- 5-section U-shape telescoping boom with double-cylinder plus rope telescoping system
- 主臂全伸臂长48m
- Maximum boom length of 48m.





超强起重性能

Super lifting performance

- 五节 48 米 “U 型” 主臂，主吊钩最大12倍率，性能领先同类产品 8%，中长臂、全伸臂高频工况性能领先10-15%。
- 5-section boom of 48 m with U-type profile; the max. parts of line is 12 for the main hook block. The performance is 8% higher than that of the competitors. the performance of medium-long boom and full boom is 10-15% higher than the competitors;
- 创新单板臂头与紧凑式臂尾结构，搭接比行业最大，吊臂承载力更强。
- Innovative single-plate boom head and compact boom tail structure, best overlapping ratio in its class and stronger boom load-bearing capacity;



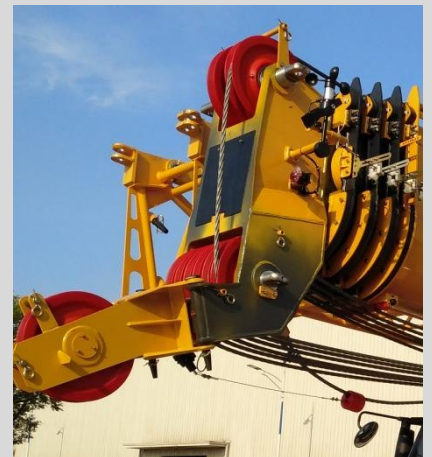
副起重臂：

Jib：

- 两节桁架式副起重臂
- Two-section lattice jib
- 副臂长度9.5m/16m
- Jib length of 9.5/16m

臂端单滑轮

Single top



QY70KC



回转机构

Slewing mechanism

- 单排四点接触球外齿式回转支承，360度回转
- Single-row four-point ball contact external tooth slewing ring, may continuously slew 360°.
- 定量泵-低速大扭矩定量马达液压系统
- A constant displacement pump and a low speed large torque motor with mature slewing buffering technology adopted
- 具有动力控制或自由回转的功能，可无级调速
- Power control and free-sliding function are available, and speed may be infinitely regulated
- 回转速度为0-2.5r/min
- Slewing speed 0-2.5r/min
- 超大卷扬后视镜,卷扬监视更清晰、视野更开阔；
- Widened winch rearview mirror brings clearer winch monitoring and wider vision





新型节能液压系统

New energy-saving hydraulic system

- 回转最低稳定速度达到 $0.1^\circ/s$ ，起升最低稳定速度（卷筒处） $2.5m/min$ ，起吊精准，更加适合精准吊装作业；
- The min. stable slewing speed is $0.1^\circ/s$. The min. stable lifting speed (drum) is $2.5m/min$. Precise and safe lifting movements can be realized.
- 双泵分合流控制技术，复合动作性能行业最高，作业高效；
- Dual-pump separate and confluent control technology brings higher compound movement performance in the industry with higher working efficiency.
- 液压系统热平衡温度在 $80^\circ C$ 以下，高温环境下持续作业不停机，吊装作业安全可靠。
- the thermal balance temperature of the hydraulic system below $80^\circ C$. It can work normally in the high temperature environment and thus the hoisting operation is safe and reliable.



起升机构

Hoisting mechanism

- 变量泵-定量马达开式液压系统
- The open winch hydraulic system consisting of variable displacement pumps and constant displacement motors
- 行星齿轮减速器、常闭式制动器
- Planetary gear reducer, normally closed brake
- 最大单绳拉力为 $64.1kN$
- Max. single line pull $64.1kN$
- 最大起升速度 $135m/min$
- Max. hoisting $135m/min$



变幅机构

Elevating mechanism

- 单变幅油缸，可靠性高
- Single elevating cylinder, high reliability
- 使用带负载补偿功能的变幅平衡阀
- The elevating balance valve with load compensation function
- 采用平衡阀外控式重力+动力下降方式
- The external-controlled boom gravity fall combined with power lowering boom

QY70KC



动力传动系统

Drive train

- 重汽发动机，额定功率276kw，最大输出扭矩1500N.m
- CHINA Nation Heavy man diesel engine, rated power 276kw, max. torque 1500N.m
- 陕齿机械变速箱，软轴操纵，全同步器
- Mechanical transmission made by Shanxi Gear Factory, with synchronizer. It is manually operated through flexible shaft.
- 最高车速90km/h，最大爬坡能力41%
- Max. travel speed 90km/h, Max. grade ability 41%





低速大扭矩动力传动系统

Low-speed large-torque power drive system

- 以低速大扭矩发动机和大速比、超速档变速箱为核心的全新动力平台，驱动性能强，承载能力高，稳定性好；
- The new power system consists of a low speed large torque engine and a transmission with high speed ratio and over drive contributes to strong driving performance, high load-bearing capacity and better stability.
- 实现了高动力性能与低油耗完美融合，行驶油耗降低12%，作业状态综合油耗降低15%；
- Resulting in perfect combination of high power performance and low fuel consumption, i.e.12% reduction in fuel consumption for driving, 15% for operation.



悬挂系统

Suspension system

- 前悬架采用少片变截面钢板弹簧
- The front suspension consists of tapered cross-section and less leaf springs
- 后悬架采用橡胶悬架，V型推力杆
- Rubber suspension with V-type push rod for rear suspensions



制动系统

Braking system

- 脚踏板操纵的双回路气压制动。前、后轴为鼓式制动器
- Foot pedal operated double-circuit air pressure brake. drum brakes are used for axles 1, 2, 3 and 4.
- 驻车制动：弹簧储能制动，作用于2、3、4轴车轮。
- Parking brake: spring energy brake, acting on wheels of 2,3,4 axles.
- 辅助制动：发动机排气制动、发动机缸内缓速制动
- Auxiliary brake: engine exhaust brake+ engine compression brake.

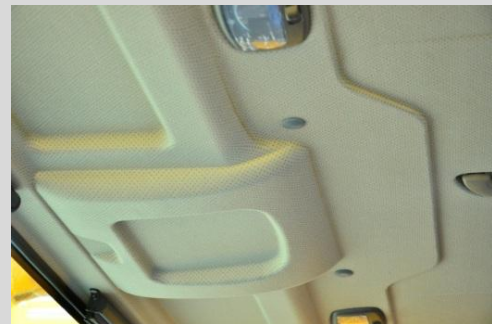
QY70KC



驾驶室

Driver's cab

- 精工高光金属拉丝质感装饰、真皮触感软包仪表台
- Precisely treated bright trim with brushed metal texture and instrument panel with leather texture.
- 阻燃防滑，易除尘精品地垫、
- Flame retardant and skid-proof carpet that is easy to clean.
- 副驾双座椅，可展开为简易卧铺
- A double-seat designed for the co-driver may be used as a berth for rest
- 标配冷暖空调
- Heater and air conditioner are standard





- 防尘降噪高密封性两室,两室耳旁噪音从82.3分贝降低至78.3分贝,减少3分贝
Cabs with high air tightness, 3 dB(A) noise reduction in noise level at seated position from 82.3 dB(A) to 78.3 dB(A)



- 优化玻璃胶施工工艺,加大涂胶面积,杜绝漏雨
Optimized construction technology of glass glue, increased glue coating area, no leakage of rain

- 钣金工艺孔增加贴片封堵,避免漏风
Sealing to sheet metal processing holes, no leakage of wind



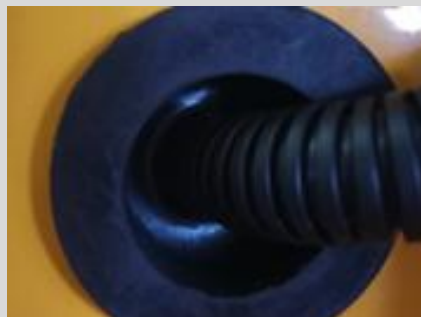
驾驶室高品质体验提升

Improvement in driver comfort

- 六项高品质体验提升,打造豪华舒适的驾乘与操作体验:防尘降噪高密封性两室、精工高光金属拉丝质感装饰、真皮触感软包仪表盘、阻燃防滑,易除尘精品地垫、热压成型封边无纺布顶棚;
- Six improvements, offering luxurious and comfortable driving and operating experience: cabs with high air tightness, artistic decoration, soft packaging instrument station, flameproof, antiskid and easy to clean floor mats, and hot press molding ceiling

- 热压成型封边无纺布顶棚(两室),材质柔和,接缝紧凑,表面平整,精细化程度高

Hot press molding ceiling (two cabs), made of soft material, with compact joints and smooth surface



- 线束及管路护套结构优化,减少串风
Optimized structure of harness and pipeline sleeves, reduced leakage of wind

QY70KC



- 年款全新涂装
New coating
- 全新高精度长度角度传感器
New length/angle sensor with high precision
- 抗氧化臂头接线盒
Antioxidant junction box





新型外观造型与人性化设计 New appearance and humanized design

- 新一代外观设计，整机刚劲有力，时尚的驾驶室与操纵室新外观，层次感与力量感完美结合；全面的人体工程学分析，人性化细节处理，打造驾驶轻松、操纵舒适，维护便捷的内在品质
- New generation appearance design presents power and vigor, such as the appearance of driver's cab and operator's cab, delivering the feeling of perfect combination of streamlining and strength; with ergonomic analysis and personalized consideration of details integrated, a quality product is created that is convenient to maintain, easy to drive and comfortable to operate.
- 7项整机外观细节全新设计，塑造顶级起重机高端品质。
- New design of seven appearance details, creating high quality of class-leading cranes



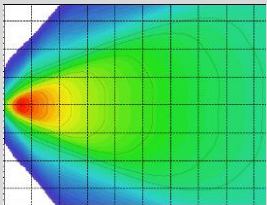
- 全新设计开发，注塑工艺灯支架
Newly designed lamp holder, made by using injection molding process
- 支腿操纵盒支架
Bracket of outrigger control box



融入蜂巢等元素，打造徐工专属设计
XCMG 's exclusive design, with honeycomb elements integrated

- 密封堵
Sealing plug
- 回转防护罩
Protective cover of slewing reducer

QY70KC



- 支腿LED作业灯，亮度提升40%；寿命由6000小时提升三万小时；功耗由35W降低至4w
- LED outrigger working lamp , Brightness is improved by 40%; service life is increased from 6,000 hours to 30,000 hours; power consumption is decreased from 35w to 4w.



3项暖心人性化细节，安心便捷

Three items for consideration of humanized details, easier and faster operation

- 高光LED支腿照明灯，亮度提升40%，寿命提升五倍；大视野卷扬监视镜，卷扬工作更安全；副臂双尖销轴设计，穿轴更方便。
- High-luminance LED outrigger working lamps, 40% increase in brightness, five-times improvement in service life
- Wide view winch monitoring mirror, safer winch operation;
- Double cone pins designed for jib, easier to insert pins.



- 副臂双尖销轴，方便副臂穿轴
- Double cone pins are used for jib. It is more convenient to insert the jib pin.



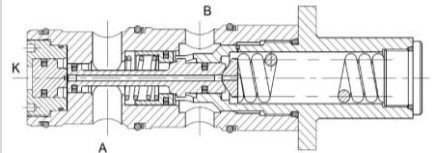
- 配重重量标识，操作更安全
- Weight sign is added on the counterweight with improved operation safety.

QY70KC



- 伸缩平衡阀可靠性提升，仅需1处金属密封，内泄量小，密封性能提升60%以上，安全性更高。

- The reliability of telescoping balance valve is improved, i.e. only one metal seal is required, leading to less inner leakage, 60% improvement in sealing performance and higher safety.



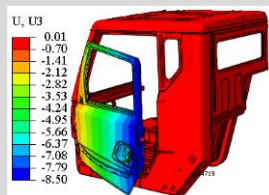
- 百余项精心升级-可靠耐用
- High reliability and top quality
- 全新门锁设计，开关更自如，寿命更长久
- Intelligent manufacturing of structural components, flexible assembly line, online monitoring of products of all series, online calibration of hydraulic system parameters and linearized debugging and monitoring to ensure consistent and stable product quality.
- 集成电源控制盒、全封闭防水线束、线束分支金属分线器全方位提升产品使用可靠性，使用寿命更长。
- Integrated PS control box, enclosed water-proof harness, metal splitter of harness branch, to enhance product reliability and prolong service life.



线束防护和插件

Harness protection

- 线束分支金属分线器防护、耐高温150℃闭口波纹管
- High temperature-resistant corrugated pipes, special wire harness closure sleeves and rubber sleeves are used, excellent dust protection, protection level up to IP67.



全新门锁设计

Brand-new door lock

- 10万次疲劳试验、5万次抨击强化试验，产品市场反馈率由2.68%降至0%。
- 100,000 fatigue tests and 50,000 reinforced shock tests, market feedback reduced from 2.68% to 0%.



地址：江苏省徐州市经济技术开发区高新路68号

Add : No. 68, Gaoxin Road, Economic Development

Zone, Xuzhou, Jiangsu Province, China

电话(Tel) : +86-516-83462242/83462350

质量监督电话(Quality Inquiry Tel) : +86-516-87888268

备件电话(Spare Parts Tel) : +86-516-83461542

邮编(Post Code) : 221004

网址(Web) : www.xcmg.com/qizhongji

服务热线 Service Tel

400-110-9999

400-001-5678



本印刷品不属于合同。出于产品不断改进的需要，我们保留对产品型号、参数、配置进行变更的权利，恕不另行通知。图片仅供参考，具体产品以实物为准。图片中产品可能并非标准配置，部分部件可能需要另行购置。办理牌照和上路行驶需遵守当地法规。

This print does not belong to the contract. We reserve the right to modify the design (such as product model, parameters and configuration) without notice for improvement. The pictures are just for reference. The product in the picture may not be standard configuration. Some parts need to be purchased separately. Conform to the local laws for license application and road traveling.

XCMG—QY70KC