

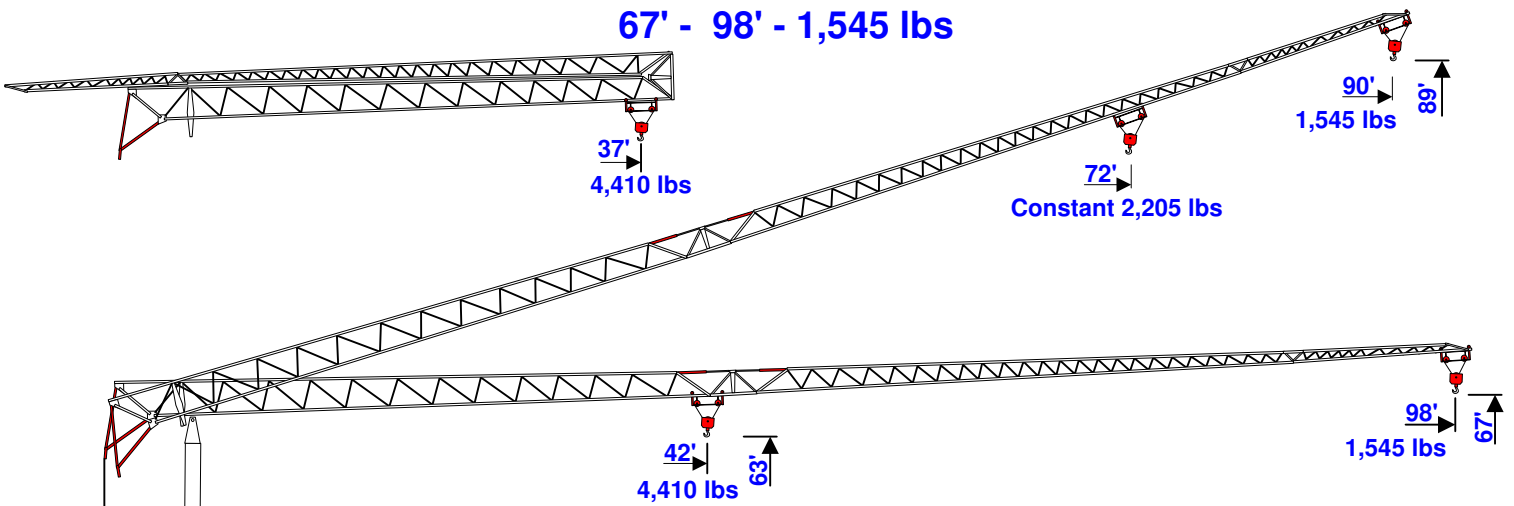
benazzato

Self-Erecting Crane

1.201-SC

Self-Contained

67' - 98' - 1,545 lbs



Self-Contained

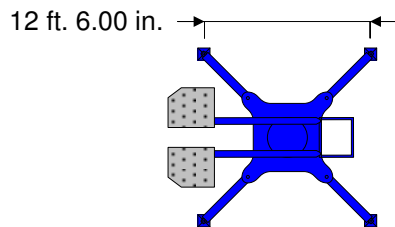
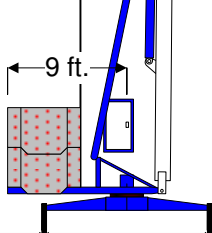
Travels With Full Ballast

Legal In All States

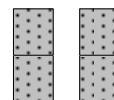
Power Requirements

Single Phase OR Three Phase

240V or 480V



Ballast Blocks X 2 6,100 lbs
 Ballast Blocks X 2 8,800 lbs
 Total Ballast: 29,800 lbs
 Crane Weight: 21,100 lbs
 Total Erected Weight: 50,900 lbs



Hook	ft.	40	46	52	59	66	72	79	85	92	98
Radius	meters	12.2	14	16.0	18.0	20.0	22.0	24.0	26.0	28.0	30.0
Maximum	lbs.	4,410	3,771	3,241	2,822	2,492	2,227	2,029	1,830	1,676	1,544
Capacities	tonnes	2.00	1.71	1.47	1.28	1.13	1.01	0.92	0.83	0.76	0.70