

**35 YEARS
IN THE
MIDDLE EAST
MARKET**

**BUSINESS
PROFILE
2025**

**DERRICK
EARTHMOVING
FORMWORKS**

**TOWER
CRANES
ESPECIALIZED**

**PASSENGER /
MATERIAL HOISTS
PLATFORMS &
CRADLES**





Al Rana Equip. & Machinery Trading LLC.

INTRODUCTION

Greetings! We would like to take this opportunity and introduce ourselves to you hoping that we would get into a mutual business relationship and cooperation.

AL RANA EQUIPMENT AND MACHINERY TRADING LLC (**AREMATES**) was established in 1990 by Engineer Bassam Nowfal as a privately held company in Sharjah – United Arab Emirates. Our main area of expertise is tower cranes, sales, rental and all related services. We focus on the U.A.E market, but we also cater to clients in other countries in the lower Gulf Region, Asia and Africa.

AREMATES is a Sole Agent of one of the most reputable European manufacturers of tower cranes, **COMANSA**. **AREMATES** is also a distributor of TEREX-COMEDIL. We maintain a large inventory of brand new and used models ranging from flat-top to Luffing jib tower cranes, which we offer to our clients for purchase (buy back option is available) or rental basis. Our tower cranes are well maintained and always kept in top condition and are ready for immediate delivery.

In the year 2006, we opened a new branch in Sharjah, Hamriyah Free Zone with an additional 25,000 square meters of space as part of our expansion plan. Our new location includes newly built offices and service center with a large warehouse for spare parts.

In addition to our **COMANSA** and **TEREX**/COMEDIL tower cranes, we also offer a wide range of used Liebherr & Potain tower cranes and ZENIT passenger/material hoist (our own brand), suspended working platforms, concrete placing booms and other related construction products.

Our services include repairs, maintenance, erection and dismantling. We also offer technical support services in order to save our client's downtime. Annual/service contracts are also available to suit clients' operational requirements". And as a trading company, we try to cater, support and provide our clients requirement and offer them with suitable solution



Al Rana Equip. & Machinery Trading LLC

After he earned his Bachelor's Degree in Mechanical Engineering and many **years of working in the field**, he founded Al Rana Equipment & Equipment & Machines Trading Establishment in May, 1990.

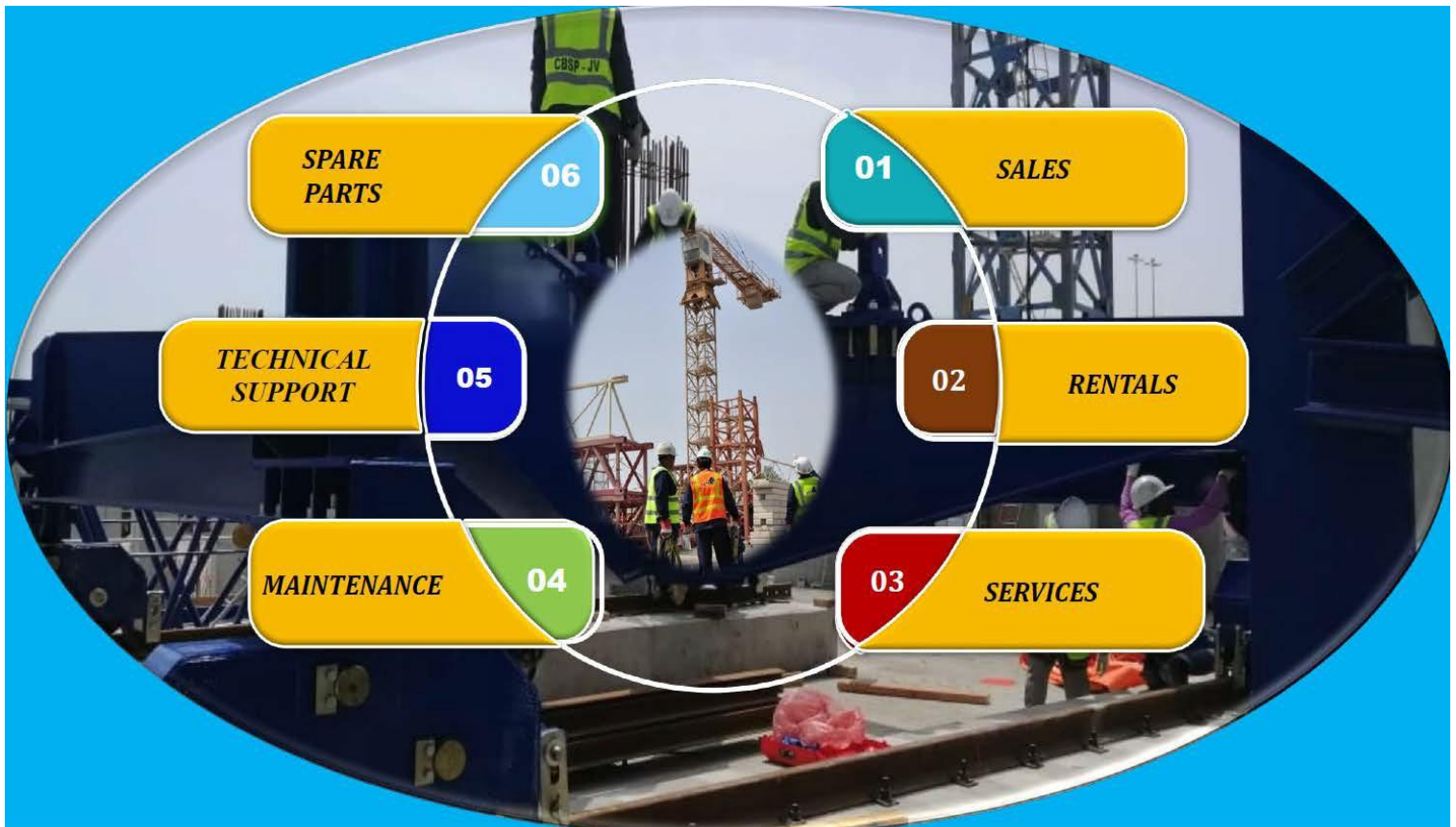
He built the company's reputation and his success in the market through his commitment to provide his clients the best possible service to meet/exceed their expectations.

He believes that continued success can only be achieved through dedication, high work ethics, integrity and passion to always find ways to improve the company's services and do things better.



Engr. Bassam Nowfal
Managing Director/Owner

BUSINESS SCOPE





Al Rana Equip. & Machinery Trading LLC





Al Rana Equip. & Machinery Trading LLC

OUR PRODUCTS



Luffing Jib Tower Cranes



Passenger/Material Hoists



Tower Crane Driver's Cabin



Schwing Concrete Pump, 42 radius



Masts Passenger/Material Hoists



Schwing Concrete Pump, 56 radius



12 tons Terex & 2 tons Chinese Derrick Crane



POWER PLUS BULLDOZER



LUFFING JIB TOWER CRANES



FORMWORKS



POWER PLUS ARTICULATED DUMP TRUCK



FORMWORKS



TOWER CRANES



LUFFING JIB

Luffing jib tower cranes are specially designed for urban use. They feature outstanding reach requiring little room for slewing motions – a special advantage if many cranes are working at the same time on high-rise buildings and power plant sites.

“FEATURES”

- *Quality manufacturing designed for reliable Performance hour after hour.
- *Easy maintenance access and built-in safety features to keep downtime to a minimum.
- *Ergonomic cabs provide the comfort required for long hours in the job.

ELAT TOPS

Designed for fast & easy erection. It is perfect condition for compression and deflection.

“FEATURES”

- *Reliable & Generous Performance
- *Equipped with safety devices
- *State of the art control technology





TOWER CRANES



HAMMERHEAD

They're well suited for heavy lifting and placement duties on the most challenging jobsites. And they can also help you save time on other jobsite duties by easily moving materials from one area to another.

FEATURES:

- *Quality manufacturing designed for reliable performance hour after hour.
- *Easy maintenance access and built-in safety Features to keep downtime to a minimum.
- *Ergonomic cabs provide the comfort required for long hours on the job.
- *The SK series includes cranes with maximum Capacity from 16 to 32t and jib lengths up to 80m

SELF ERECTING CRANE

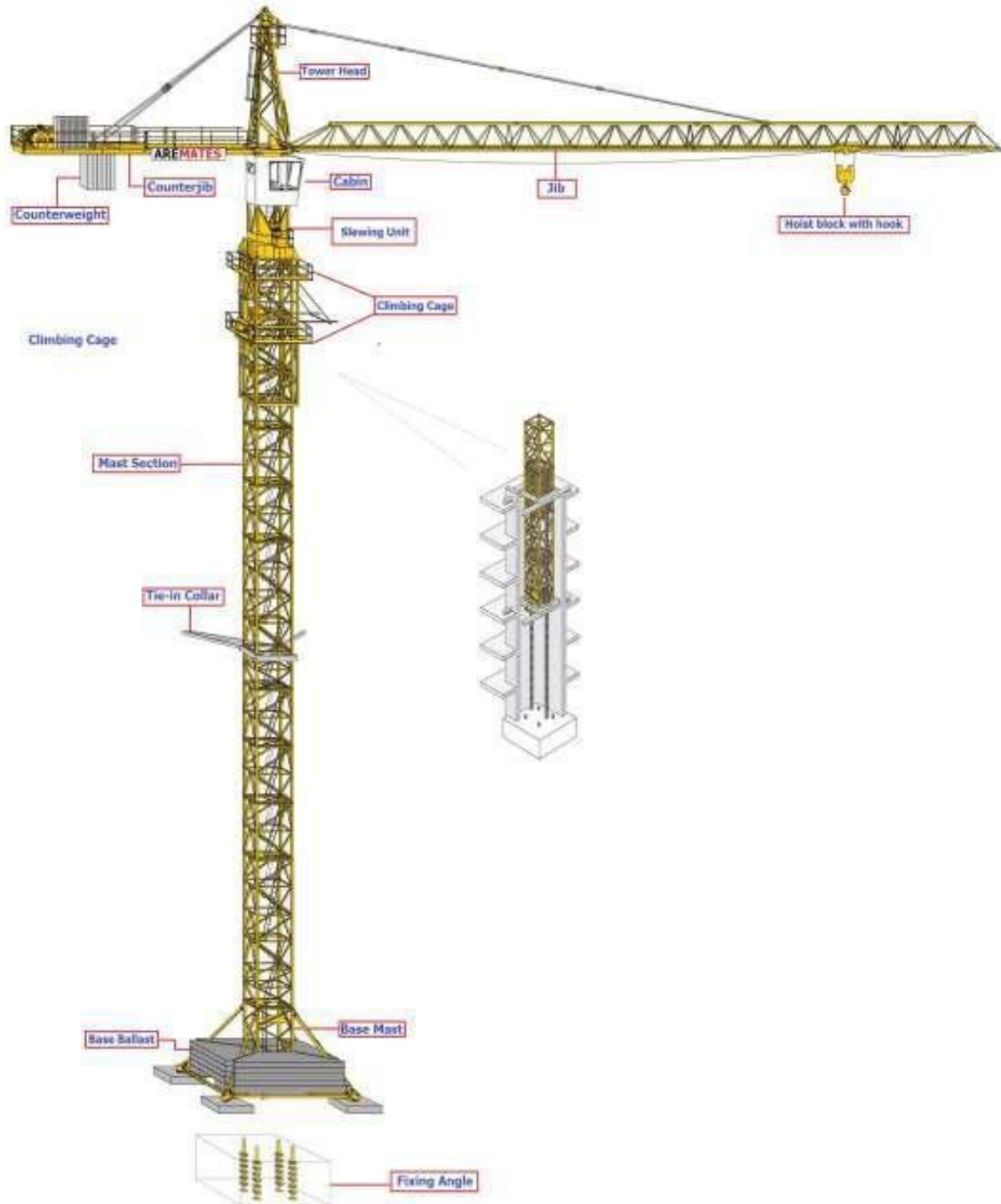
*Reliability, quality and safety are the reasons for the success of TEREX CBR self erecting cranes all over the world and for the widespread favorable answer of the market.

FEATURES:

- *The self-erecting range with 16 to 40 ton capacity and jib lengths up to 40m is the result of a constant technological research.
- *They are cranes suitable for both road and containerized transport.
- *The erection is quick, carried out with simple and automated systems.
- *First – rate quality components, variable frequency control drive assemblies, full galvanization of the structure make this range a landmark in the field.



Anatomy of a Tower Crane



Anatomy of a Tower Crane



Al Rana Equip. & Machinery Trading LLC

Accessories of Tower Crane



MAST SECTIONS



Mast Section Sizes:

- 2m x 2m
- 1.6m x 1.6m
- 4.14m
- 2.5 m



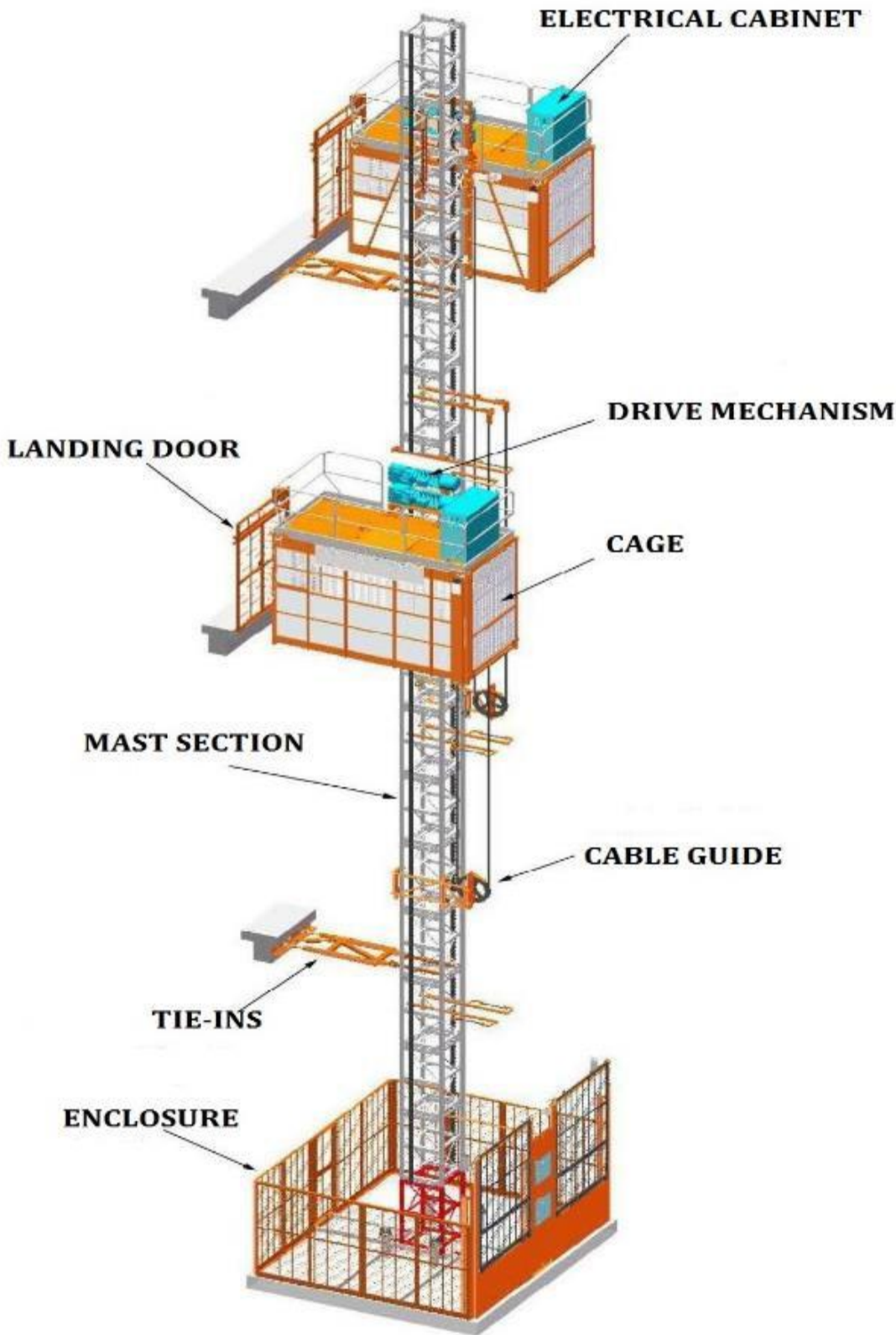


This collage displays a wide variety of industrial and electronic components, organized in a grid. The components include:

- Top Row:** Cables, connectors, sensors, actuators, and various electronic modules.
- Second Row:** Motors, actuators, and various electronic modules.
- Third Row:** A large image of a warehouse or storage area, and various electronic modules.
- Fourth Row:** Various electronic modules, sensors, and actuators.
- Fifth Row:** Various electronic modules, sensors, and actuators.
- Sixth Row:** Various electronic modules, sensors, and actuators.
- Seventh Row:** Various electronic modules, sensors, and actuators.
- Eighth Row:** Various electronic modules, sensors, and actuators.
- Ninth Row:** Various electronic modules, sensors, and actuators.
- Tenth Row:** Various electronic modules, sensors, and actuators.



ANATOMY OF PASSENGER/MATERIAL HOIST





Passenger/Material Hoist



DOUBLE CABIN , 2,000 KGS. EACH CABIN



DOUBLE CABIN , 3,200 KGS. EACH CABIN

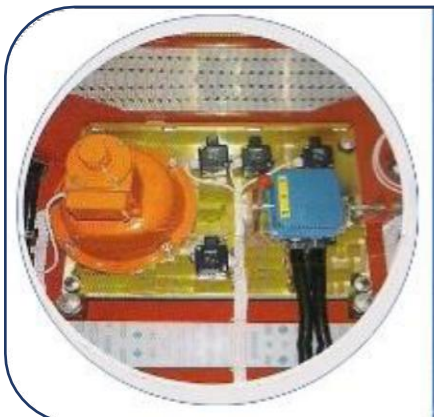
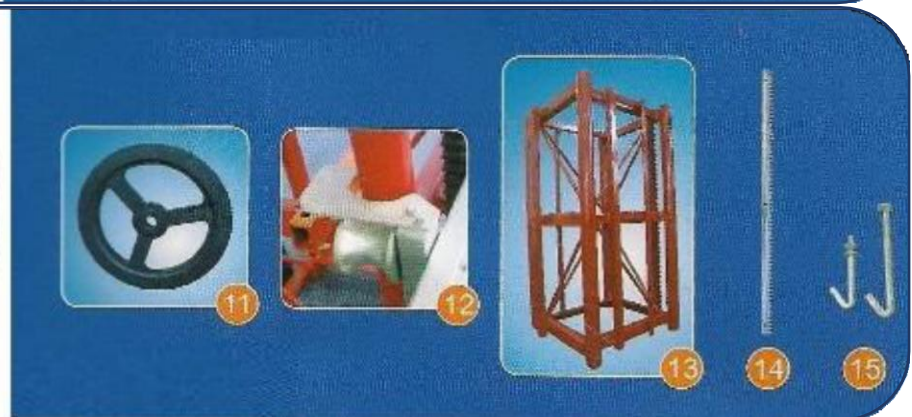


These are available for sale or for hire based on client's requirements.

Since we were the first company to introduce quality Chinese Passenger/Material Hoist to the United Arab Emirates market, we have been able to work closely with the manufacturers in order to continuously improve the performance and the overall quality of the hoist.



ACCESSORIES/PARTS OF PASSENGER/MATERIAL HOIST





Al Rana Equip. & Machinery Trading LLC

SOME OF OUR MAJOR CLIENTS

AL ALI CONSTRUCTION & DEVELOPMENT

AL BUHAIRA CONTRACTING LLC

AL ASHRAM CONTRACTING

ALEC ENGINEERING & CONTG LLC

AL NABOODAH NATIONAL PLANT

ARABIAN CONSTRUCTION CO.

AL ROSTAMANI PEGEL

AL SAHEL CONTRACTING

DUBAI DAWN DISTINGUISHED CONSTRUCTION

FIBREX LLC

CONSOLIDATED CONTRACTORS INTERNATIONAL COMPANY

FUJSENG CONSTRUCTION LLC

GUNAL CONSTRUCTION TRADING & INDUSTRY CO.

LAMPRELL ENERGY LTD

MCDERMOTT MIDDLE EAST, INC.

SUN ENGINEERING CONT'G

S.S LOOTAH GROUP

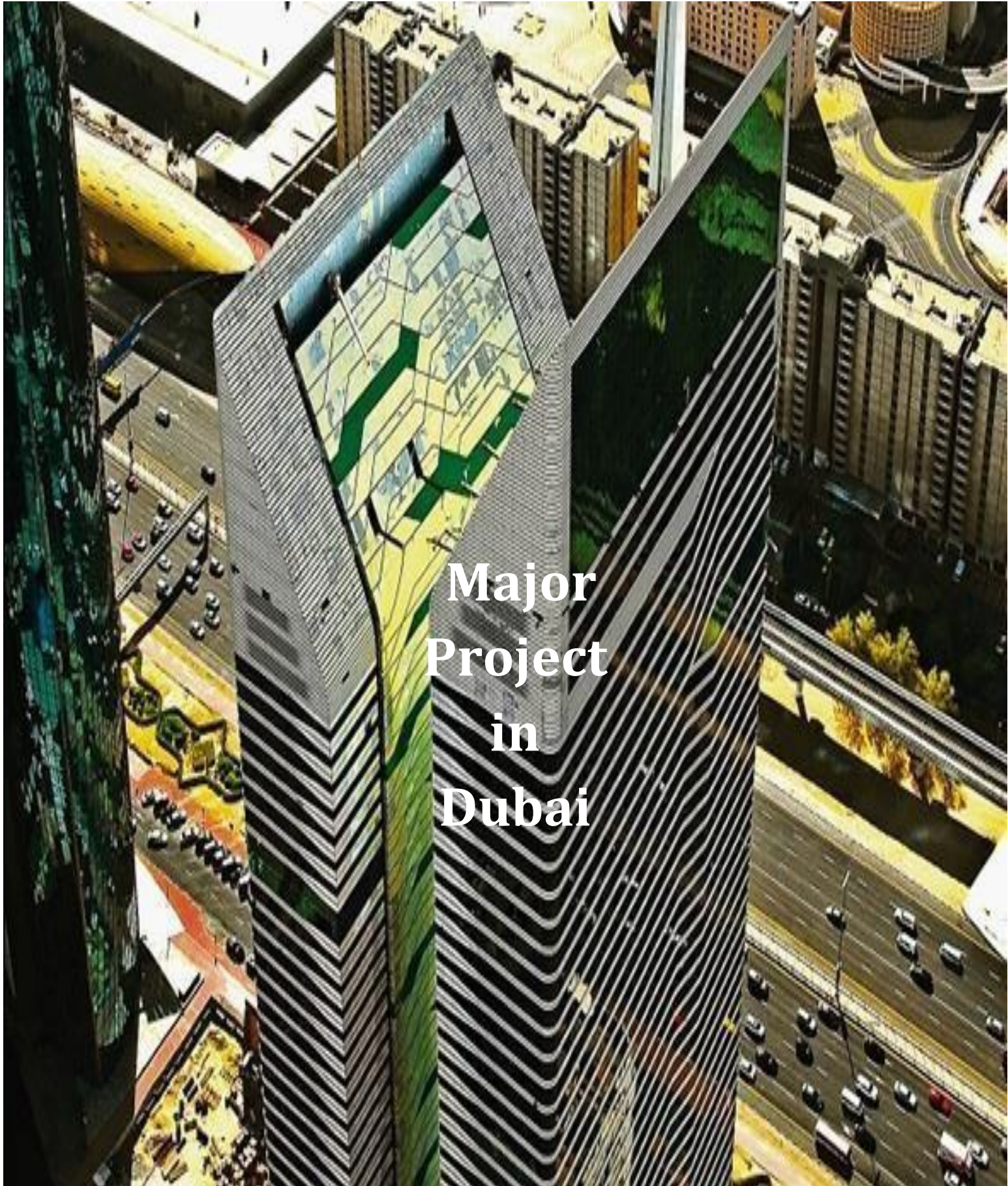
SHAPOORJI PALLONJI MIDEAST LLC

**TAV TEPE AKFEN INVESTMENT CONSTRUCTION AND OPERATIONS
- DUBAI BRANCH**

Our client's list would be too long, if we were to list every client we are serving , however, we have selected some as references .



Al Rana Equip. & Machinery Trading LLC



**Major
Project
in
Dubai**



Al Rana Equip. & Machinery Trading LLC

AIRE Tower in Jumeirah Al Wasl Dubai by DDDC (DUBAI DAWN DISTINGUISHED CONSTRUCTION)



AIRE TOWER, 71 stories is developed by Alta Real Estate Development .

It is located at next to Sheikh Zayed Road- it just 9 minutes drive to Dubai Mall – it has an strategic location.

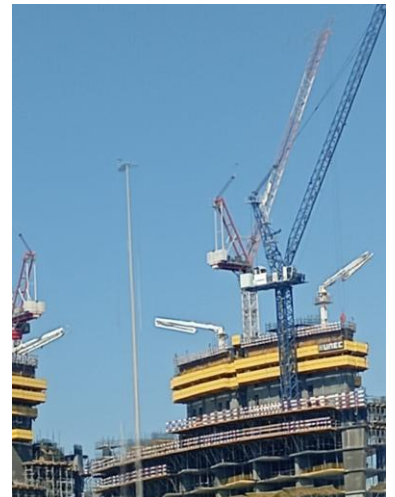
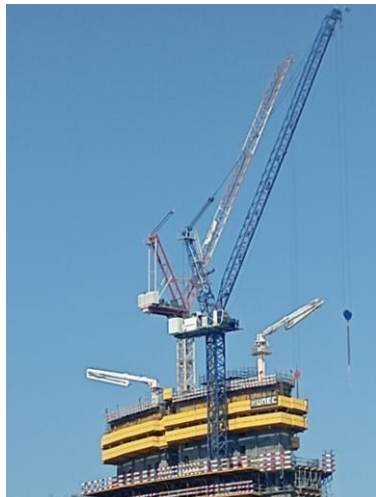
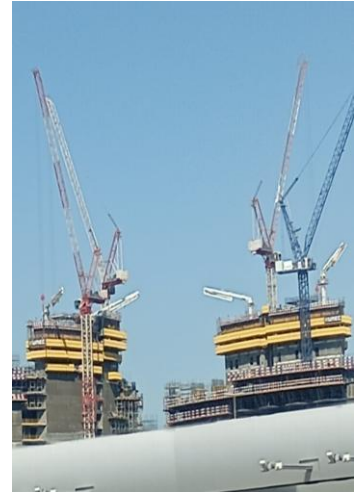
**We supplied TEREX LUFFING JIB type CTL 282 – 18 tons & Tower Crane Luffing CTL 140 -10 tons .
All services , maintenance & spare parts were all provided. It is an ongoing project.**



Al Rana Equip. & Machinery Trading LLC

SAFA ONE DE GRISOGONO BY DAMAC, SHAIKH ZAYED ROAD

by **UNEC** (United Engineering Construction)



SAFA ONE DE GRISOGONO BY renowned **DAMAC** Properties is located at the heart of Dubai 56JX+VC6-AL SAFA-DUBAI. The 2 Tower has 40th to 61st floors storey

We supplied 4 x Tower Cranes' TEREX LUFFING JIB type CTL 260 – 18 tons and new Tower Crane **Luffing COMANSA CML280-18 tons** .. All services , maintenance & spare parts were all provided. It is an ongoing project.



Al Rana Equip. & Machinery Trading LLC

Reve Beachfront Apartment Azizi Riviera by Gardinia Building Contracting LLC



Reve Azizi Riviera , 3 basement + 21 storeys by Azizi Development is located at the Maydan One – Nad Al Sheba 1- Dubai (Mohammed Bin Rashid City).

We supplied 4 nos. TEREX LUFFING JIB type CTL 140 – 10 tons . All services , maintenance & spare parts are all provided. It is ongoing project.



Al Rana Equip. & Machinery Trading LLC

ZUHA RESIDENTIAL VILLAS (ZAYA Developer) :
H&N INNOVATIVE SYSTEM CONTRACTING LLC



Zuha Residential Villas Resort located at The World ISLANDS, a giant man made archipelago in a shape of a world map in Dubai.

We supplied TEREX FLAT TOP 8 TONS / 16 TONS . All services , maintenance & spare parts are all provided. It is an ongoing project.



Al Rana Equip. & Machinery Trading LLC

Za-abeel One Towers by : Alec Engineering



2016-2022



One Za'abeel consist of two towers linked by a suspended bridge 125m in the air – having a 225m long structure of steel & glass with the world's longest cantilever. These towers standing at 304m & 241m height respectively.

We supplied 1 brand new TEREX LUFFING JIB type CTL 260 – 18 tons and rented 2 Tower Cranes Luffing Terex CTL630- 32 tons & Potain MD1100 – 50tons. All services , maintenance & spare parts were all provided.



IL PRIMO LOT A4A1B By: TAV Tefe Akfen Construction



2017-2021



Il Primo Tower is located nearby Opera House & Burj Khalifa . The Tower has 77 storey structure with Podium & six levels of basement and parking.

We supplied 1 brand new TEREX LUFFING JIB type CTL 260 – 18 tons and rented 2 Tower Cranes Luffing Terex CTL630- 32 tons & Potain MD1100 – 50tons. All services , maintenance & spare parts were all provided.



Al Rana Equip. & Machinery Trading LLC

A2A3A1a THE ADDRESS by: TAV Tefe Akfen Construction



2016-2022



The Address Towers is located nearby Opera House & Burj Khalifa as well. The A2 & A3 are having a height of 260m & 230m respectively.

We supplied 4nos. **ZENIT Passenger/Material Hoists** SC270/270GZ, 2.7 tons each cabin, brand new. We provided all the services, maintenance & spare parts for their Terex Luffing Cranes 2x CTL140-10 tons, CTL 260- 18 tons, Potain MR225 & Pega Hoist 3240 TD VFS.



Al Rana Equip. & Machinery Trading LLC

FORM WORKS Dubai Project by Saleh Construction



We supplied rentals for Terex Luffing CTL 140- 10 tons, supply of FORMWORKS. Plus 2 nos. JANE CONCRETE PLACING BOOM , 32 RADIUS . We provided all the services, maintenance & spare parts for all the supplied equipment.



Al Rana Equip. & Machinery Trading LLC

THE PLOT 18 CREEKSIDE DUBAI UAE AL NABOODAH CONTRACTING



2016-2022



The Creekside 18 Towers is located Dubai Creek Harbor Development . A 37 storey 2 towers each with residential & commercial units .

We supplied rentals 2 nos. ZENIT Passenger/Material Hoists SC320/320GZ, 3.2 tons each cabin, brand new along with all brand new 18 tons TEREX LUFFING JIB CRANE CTL 260, 4 units. We provided all the services, maintenance & spare parts for all the supplied equipment.



Al Rana Equip. & Machinery Trading LLC

THE Plot No. 317-1080 Mankhool Project, DUBAI UAE AL NABOODAH



2016-2020



The project involves construction of a mixed use development consist of 4 buildings including a commercial, a hotel apartment and a residential building comprising 3 basement levels, a ground floor and 23 additional floors.

We supplied rentals 2 nos. ZENIT Passenger/Material Hoists SC320/320GZ, 3.2 tons each cabin, brand new along with all brand new 18 tons Tower crane TEREX LUFFING JIB CRANE CTL 260, 4 units. We provided all the services, maintenance & spare parts for all the supplied equipment.



Al Rana Equip. & Machinery Trading LLC

WAFI MALL EXPANSION
AL FARA'A GEN. CONTRACTING CO.



AREMATES supplied of 2 nos. of BRAND NEW **LUFFING JIB LINDEN COMANSA MODEL LCL280-18t** and Flat Top 21LC 550-25 tons plus **TEREX Flat Top Tower Crane CTT561-32 tons & CTT561-24 tons** . Provided all the services such as erection, dismantling, maintenance, supplied accessories and spare parts.



Al Rana Equip. & Machinery Trading LLC

BURJ VISTA TOWER

Consolidated Contractors International Company



A twin tower residential development offering one 65-storey tower and the other, 20 storey, Burj Vista features lavish terraces opening up to unparalleled views of Burj Khalifa.

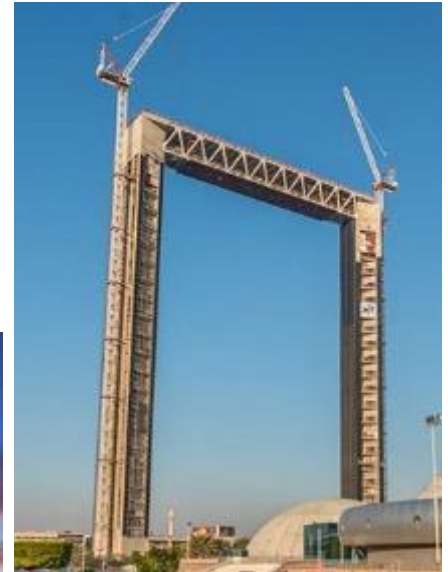
AREMATES supplied of 3 nos. of BRAND NEW LUFFING JIB CRANE MODEL CTL260-18t and 2nos. **LUFFING JIB COMANSA MODEL LCL280-24t** and also provided all services such as maintenance, supplied accessories and spare parts.



Al Rana Equip. & Machinery Trading LLC

DUBAI FRAME

Al Rostamani Pegel LLC



2016-2019

The project is the construction of an iconic Structure in Zabeel Park with a simple rectangular form consisting of 150m high Concrete (core) legs connected by a 93m long steel Bridge at the top level. The Bridge serves as an observatory providing uninterrupted views the “New Dubai” and “Old Dubai”. The Ground floor within the concrete legs is to accommodate two lifts for the vertical movement of people and a stair case for emergency access and egress.

AREMATES supplied of 2 nos. of LUFFING JIB CRANE MODEL CTL180-18t also provides services such as maintenance, supplied accessories and spare parts .

©<http://www.alrostamanigroup.ae/sites/en/pages/project.aspx?ListName=PegelRunningProjects&Key=Running%20Projects&ParentCompany=Al%20Rostamani%20Pegel>



Al Rana Equip. & Machinery Trading LLC.

The WOW HOTEL

GUNAL CONSTRUCTION TRADING & INDUSTRY CO. INC.



2017-2019



Located somewhere in Business Bay Dubai besides Paramount Hotel , Wow Hotel & Hotel Apartments Tower is an 80 storey with 184,778m² in size project. It has health and fitness club7 , swimming pool & SPA 8 , café and global restaurants.

We supplied brand new Terex Tower Crane 2x CTL 140-10tons & CTL260-18 tons including some rentals of Terex CTL180-16 tons & Terex Flat Top 181- 8 tons during the first stage of construction.



Al Rana Equip. & Machinery Trading LLC.

The PARAMOUNT HOTEL & RESIDENCE

TAV TEFE AKFEN COMPANY



2016-2019



Located at the celebrated Burj Khalifa district, Damac Towers by Paramount is a hotel and residences focused mixed-use development project consisting of 4 towers with 2 basements, a ground floor, 8 podium floors and 54 floors reaching a height of 279 meters. In addition to a luxury hotel operated by Paramount with 250 keys, three of these towers are identical with luxurious residences.

AREMATES, provides all the services, maintenance, spare parts & and some of rental accessories of all their TEREX LUFFING JIB CRANE MODEL CTL250-16t, 3nos. LUFFING JIB CRANE MODEL CTL140-10t, LUFFING JIB CRANE MODEL CTL260-18t, 1 no. & Comansa Luffing LCL165-12 tons.



Al Rana Equip. & Machinery Trading LLC.

DUBAI OPERA HOUSE

CONSOLIDATED CONTRACTORS INTERNATIONAL COMPANY



2014-2019



The project calls for construction of a 2,000 seats multi-format venue for opera, theatre, concerts, art exhibitions, orchestra, films, sports events and seasonal program, within the Opera District in Downtown Dubai.

AREMATES - supplied 3 nos. of LUFFING JIB CRANE MODEL CTL400-24t, LUFFING JIB CRANE MODEL CTL430-24t, & big capacity TEREX Luffing Ctl 630-32 tons and also provides services such as maintenance, supplied accessories and spare parts.



Al Rana Equip. & Machinery Trading LLC.

The Hotel & Mut Twin Towers Nikko Hotel Dubai **ACICO INTERNATIONAL CONTRACTING**



2005-2010



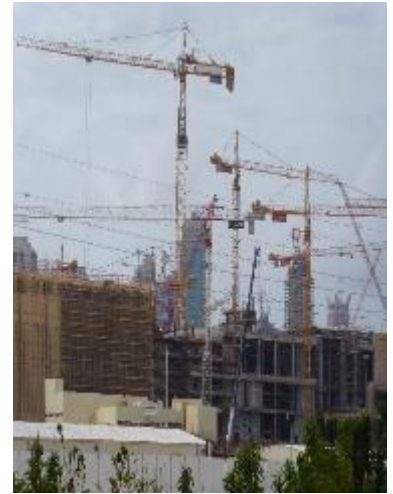
Located on the main throughfare in Shaikh Zayed Road, this includes "The Hotel Jal Tower/ Nikko Hotel" having a 269 meters height with an area of 66,451 sqm., it is one of the taller skyscrapers in Dubai .

Supplied 2 nos. brand new Terex Luffing Tower Crane CTL 140- 10 tons + 1 x Liebherr Tower Crane plus Passenger Material Hoist SC270/270G.



Al Rana Equip. & Machinery Trading LLC.

The DUBAI MALL
CONSOLIDATED CONTRACTORS INTERNATIONAL COMPANY



2005-2008

The mall was built by a joint venture of Dutco Balfour Beatty, Al Ghandi/CCC and Turner Construction for Emaar Properties, claiming the size of 50 "international-sized football (soccer) pitches". The Largest mall in the world with total area of 1,124,000 m².

Supplied of 28no. Liebherr 180EC-H & 280EC-H; 1no. of LUFFING JIB CRANE MODEL CTL400-24t, 1no. LUFFING JIB CRANE MODEL CTL430-24t, and also provides services such as maintenance, supplied accessories and spare parts.



Al Rana Equip. & Machinery Trading LLC.

**SAMPLE
OF
MAJOR
PROJECT
SHARJAH
&
Northern Emirates**



Al Rana Equip. & Machinery Trading LLC.

**The PLOT NUMBER 0820, AL NAKHEEL 02 AJMAN
SADHANA CONTRACTING LLC**



PROVIDE SERVICES SUCH DISMANTLING OF THEIR LIEBHERR TOWER CRANE 112ECH from height of 100m with jib 55m with 4 collar ties and re-erected at 45m height . A residential / commercial building in Ajman (B+G+M+5P+ 17 STOREY).



Al Rana Equip. & Machinery Trading LLC.

FUJAIRAH INVESTMENT TWIN TOWER –FUJAIRAH **Fukseng Construction Company LLC.**



Provides services for their own 2nos. Terex Flat Top CTT 181-8 tons such as erection, maintenance , spare parts & Dismantling.

The ZAHIA MALL -SHARJAH

CONSOLIDATED CONSTRUCTION INTERNATIONAL COMPANY



2018-2019

Located in Sharjah , around 136,200 sqm., one of the largest mall in the Northern. Supplied 1 no. rental Liebherr Tower Crane 280ECH



Al Rana Equip. & Machinery Trading LLC.

The Movinpec Hotel Project, RAK - UAE

Al Ali Construction Company.



Provide services for their own Tower Crane such as erection, maintenance , spare parts & dismantling & the rental of Passenger / Material Hoist SC200/200

The SAHARA MALL SHARJAH



Supply 3 nos. of Tower Crane Chinese & provide services such as erection, maintenance , spare parts & dismantling



Al Rana Equip. & Machinery Trading LLC.

The ASAS Towers -SHARJAH **AL QABDAH CONTRACTING LLC**



Located in Al Khan Corniche- Sharjah , ASAS PROJECT SITE G+5P+ 5 OFFICES + HC +43 TYPICAL FLOOR + PENT HOUSE.

Supplied 2 nos. brand new Liebherr Tower Crane 224ECH + 1 x Chinese Tower Crane R14/16 plus Passenger Material Hoist SC200/200G.



Al Rana Equip. & Machinery Trading LLC.

AL MAJAZ TOWER 2 PROJECT, SHARJAH CITY ENGINEERING CONTRACTING



Supplied 2 nos. brand new TEREX TOWER CRANE LUFFING CTL 180-16 tons & CTL 140-10 tons & Material Hoist SC200/200.



Al Rana Equip. & Machinery Trading LLC.

Al Malak Tower Bldg.- SHARJAH

Danat Al Sharjah Contracting Co.



Supplied 1x brand new TEREX CTT181- 8 tons , 1x Potain Tower Crane MD235 & Passenger/Material Hoist SC200/200

AL NAKLAH TOWER 3 PROJECT – AL QASBAH SHARJAH **S.S LOOTAH CONTRACTING**



Supplied 2 brand new TEREX CTL 180- 16 tons

AL NAOMI TOWERS & OTHER PROJECTS – AJMAN **ZAMALEK GEN. CONTRACTING**



Supplied 6 nos. LIEBHERR TOWER CRANES 112ECH & 2x91EC
13 nos. ZENIT HOISTS SC200/200TD / SC120TD



Al Rana Equip. & Machinery Trading LLC.

The RAS LAFFAN PROJECT, AJMAN
SIX CONSTRUCT JV HIGGS & HILL CONSTRUCTION



AREMATES supplied 8nos. TEREX FLAT TOP TOWER CRANE CTT331-16 tons & 1no. of LUFFING JIB CRANE MODEL CTL400-24t, and also provides services , maintenance and spare parts for all these rental cranes .

The Al Mamzar Bldg. Project -Sharjah
DARWISH ENGINEERING



AREMATES supplied PASSENGER / MATERIAL HOIST SC200/200TD & provides the services



Al Rana Equip. & Machinery Trading LLC.

**SAMPLE
OF MAJOR
PROJECT
IN
ABU DHABI & Al Ain**



Al Rana Equip. & Machinery Trading LLC.

Al Ain Stadium Phase II

by : BAM INTERNATIONAL



AREMATES supplied rentals of Terex Comedil Tower Crane Model CTT181-8t plus their own purchased TEREX CTT 181-8tons & provide services such as erection, maintenance, supplied accessories, spare parts & dismantling till the project end.

Al Ain Stadium Phase II

by : AL NASR CONTRACTING CO. LLC



Supplied rental of 2 nos. of Terex Comedil Tower Crane Model CTT331-16t & provide services such as erection, maintenance, supplied accessories and spare parts & dismantling.



Al Rana Equip. & Machinery Trading LLC.

Al Ain Stadium Phase I

by : **BAM INTERNATIONAL**



2011-2012



The scope of work included construction of multi-functional stadium with a gross floor area of 45,000 m². The construction of the stadium is a combination of structure steel and reinforced concrete on piled foundations (by others) with aluminum and composite external cladding and a palm bowl envelope.

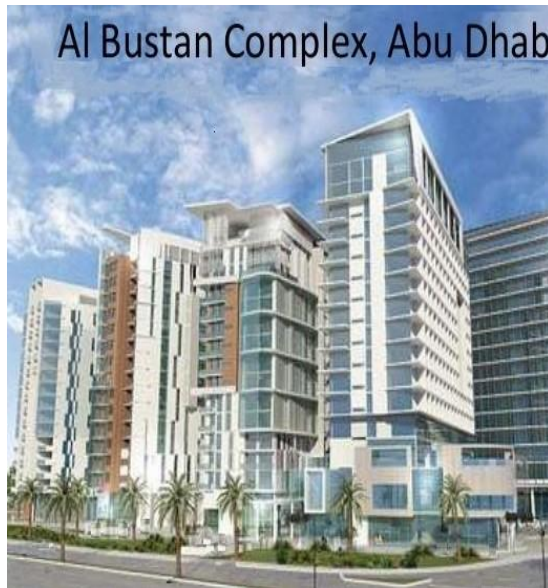
AREMATES supplied rental of 4 nos. of Terex Comedil Tower Crane Model CTT331-16t and 2 nos. Terex Comedil Tower Crane Model CTT231-12t provides services such as maintenance, supplied accessories and spare parts.



Al Rana Equip. & Machinery Trading LLC.

Al Bustan Complex project #279 sector E35

Al Habtoor Engineering Enterprises Co. L.L.C.



2006-2007



Al Bustan mixed use development in Abu Dhabi includes construction of five 17-storey towers above a five-level car park. The towers will be four-star hotel, an office tower, a tower of 250 serviced apartments and two residential towers with a total of 450 apartments.

AREMATES supplied rental of 1 no. of Terex Comedil Luffing Jib Type Model CTL400-24t, 1 no. of Terex Comedil Luffing Jib Type Model CTL260-18t and 1 no. of Terex Comedil Luffing Jib Type Model CTL180-16t, also provides services such as maintenance, supplied accessories and spare parts.



Al Rana Equip. & Machinery Trading LLC.

CAPITAL GATE,ADNEC Phase 3 project #275

Al Habtoor Engineering Enterprises Co. L.L.C.



2016-2019



The project scope of work also included the relocation of existing services which run through the site, and the excavation, shoring and dewatering of the basement. Designed to be 160 meters high with 35 floors of varying sizes, the tower consists of a basement level, a ground floor, a mezzanine level, 16 levels of office suites and 16 levels of hotel accommodation, covering a total built-up area of 50,000 m2.



Al Rana Equip. & Machinery Trading LLC.

PREMIER INN Abu Dhabi

Bam International



2009-2010



The Three-star Premier Inn Hotel is the first major hotel within the Abu Dhabi Airport complex on a building area of 14,000 m² and is linked to Terminal 1 and 3 by a retail corridor. The six-story hotel features 300 guest rooms, a restaurant, bar, coffee outlet and several meeting rooms. The design of the new Premier Inn Hotel showcases contemporary architecture, with the building appearing as two intersecting masses.

AREMATES supplied rental of 1 no. of Terex Comedil Flat top Type Model CTT331-16t and also provide services such as erection, maintenance, supplied accessories , spare parts & dismantling.



Al Rana Equip. & Machinery Trading LLC.

Al Zeina Project, Al Raha Beach

Al Dar - Laing O' Rourke



2008-2009

The project built alongside 5.2 million of natural beach front, the Al Raha Beach development is a mix world-class residential, commercial, and cultural, entertainment and public facilities, which ultimately house up to 120,000 residents. Al Raha is located on the beach side of the main highway leading Abu Dhabi from Dubai; the development consists of three precincts, each with their own distinct personality and appeal.

Supplied rental of 4 nos. of Terex Comedil Flattop Type Model CTT331-16t and also provides services such as maintenance, supplied accessories and spare parts.



Al Rana Equip. & Machinery Trading LLC.

Al Raha Beach **INTERBETON- Al Dar**



The project Al Raha Beach development Aldar/Laing O'Rourke Company for a major infrastructural package at its 500 hectare mixed-use waterfront project, Al Raha Beach. In addition to these resources, Al Raha Beach Development (ARBD) has an abundance of dining choices, landscaped lawns and peaceful water fountains, that have been designed to relax and appease the residents. The environment suits all manner of people- modern families, first-time buyers, retired workers and expatriates; a community for all. It is currently home to 120,000 people.



Al Rana Equip. & Machinery Trading LLC.

Capital Plaza Project, A.D

Arabian Construction Company



2007-2011

The Capital Plaza is comprised five high rise tower buildings with a shared podium. This project contains a 5-star, 250 room hotel tower, 25,000 m2 of office space, luxury apartments including 21 sky villas and six rooftop villa apartments located in three towers, the podium is a 7-floor retail space on top of four storeys of underground parking. This mixed use development ranges in height from 30 to 45 floors on a seven floor retail podium and four basement car parks.

Supplied 1 no. of Terex Comedil Luffing Jib Type Model CTL180-16t and also provides services such as maintenance, supplied accessories and spare parts.



Al Rana Equip. & Machinery Trading LLC.

PARK ROTANA PROJECT A.D

TERNA S.A GEC GROUP



The scope of work integrated a contemporary mixed use business and residential complex, the 5-star Park Rotana Mixed Use Development provides a combination of deluxe accommodation, diverse culinary experiences with signature dining venues, state of the art meeting and recreational facilities.

Supplied 6 nos. of brand new Chinese Tower Cranes FO/23B – 10 tons and also provides services such as maintenance & spare parts.



Al Rana Equip. & Machinery Trading LLC.

HODARIYAT BRIDGE PROJECT A.D

VSL INTERNATIONAL CONST. CO.



2 nos. TEREX-COMEDIL CTT181-8, H20 at Hodariyat Bridge Projects Abu Dhabi-UAE



The 1.3km long bridge provides a 29m vertical clearance for the 170m wide navigation channel. The superstructure carries six lanes of traffic and two walkways. It consists of a 36.3m wide single cell precast segmental concrete box girder with stiffening struts inside and outside the box. The 200m long main span is supported by a single plane of stay cables within the bridge median. The foundations consist of 1.2m and 1.5m diameter drilled shafts socketed into the bedrock. The 55m long approach spans are built by incremental launching from the abutments, while the main spans are built in balanced cantilever with precast concrete segments.

AREMATES supplied of 2nos. Terex Flat Top Comedil CTT181-8t, and also provides services such as maintenance, supplied accessories and spare parts.

2011-2012



Al Rana Equip. & Machinery Trading LLC.

The background of the slide features a blue silhouette of a world map centered on the Atlantic Ocean. Behind the map is a faint, light blue illustration of a city skyline with several tall skyscrapers. The text "new photo" is faintly visible in the center of the map.

**SOME PHOTOS
OF OUR
INTERNATIONAL
PROJECTS**



Al Rana Equip. & Machinery Trading LLC.

UNICRANE PTE LTD. (SINGAPORE)

MIXED PROJECTS



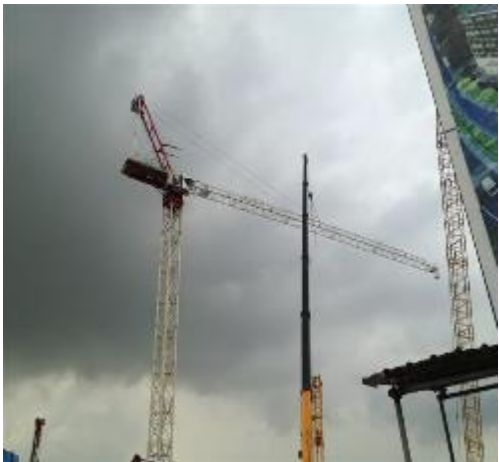
TEREX LUFFING CTL 430-24 tons



TEREX FLAT TOP CTT 331-16 tons



COMANSA CM550-25 tons



TEREX LUFFING CTL 180-16 tons



TEREX LUFFING CTL 140-10 tons



TEREX LUFFING CTL 430-24 tons



COMANSA CM550-25 tons



TEREX LUFFING CTL 260-18 tons



TEREX FLAT TOP CTT 331-16 tons



Al Rana Equip. & Machinery Trading LLC.

UNICRANE PTE LTD. (SINGAPORE) MIXED PROJECTS



COMANSA CM550-25 tons



TEREX FLAT TOP CTT 331-16 tons



TEREX FLAT TOP CTT 331-16 tons



TEREX FLAT TOP CTT 331-16 tons



TEREX LUFFING CTL 180-16 tons



TEREX LUFFING CTL 260-18 tons



COMANSA FLAT TOP 21CM550-



TEREX LUFFING CTL 430-24 tons



COMANSA FLAT TOP



Al Rana Equip. & Machinery Trading LLC.

SELECT PLANT (LONDON- UK)
MIXED PROJECTS (5nos. CTL 430-24 tons)



TEREX LUFFING CTL 430-24 tons



TEREX LUFFING CTL 430-24 tons



TEREX LUFFING CTL 430-24 tons

(BAHRAIN) MIXED PROJECTS



COMANSA FLAT TOP 21CM550-25 tons



COMANSA FLAT TOP 21CM550-25 tons



COMANSA FLAT TOP 21CM450-25t

(KUWAIT) MIXED PROJECTS



TEREX LUFFING CTL180-16 tons



Liebherr Luffing 112HCL



Liebherr Luffing 224EC-H



Al Rana Equip. & Machinery Trading LLC.

NHAT TAN BRIDGE (Vietnam)

By: Sumitomo Mitsui Construction



This project pathway has 8 lane road, four for each direction, crosses the Red River. To save its 1,200 meters of width, a project of a spectacular cable stayed bridge and approach viaduct of 3.080 meters in total length.

The main part of the bridge, 1,500 meters in length, will feature five A-shaped concrete pylons, to which the clamping cables will be tied. The construction of these pylons, located every 300 meters along the bridge, has been done by five nos. of Comansa Linden Tower Crane Model 21LC550-18t, supplied to Sumitomo Mitsui Construction in collaboration with UNICRANE PTE LTD., Singapore a subsidiary of AREMATES.



Al Rana Equip. & Machinery Trading LLC.

KING ABDULLAH FINANCIAL DISTRICT (K.S.A)

By: Construction Company



This project consists of 59 towers in an area of 1.6 million square meters. It will provide more than 3 million square meters of space of various uses 62,000 parking spaces and accommodation for 12,000 residents. The king Abdullah Financial District is an incredible & ambitious project which will enrich the economy and reputation of Saudi Arabia's capital city.

AREMATES supplied of 7nos. Passenger/material Hoist Model SC200/200TD, and also provides services such as maintenance, supplied accessories and spare parts.



Al Rana Equip. & Machinery Trading LLC.

(DOHA QATAR) MIXED PROJECTS

2006-2008



3x TEREX LUFFING CTL 180-16 tons



TEREX FLAT TOP CTT181-8 tons



5x TEREX FLAT TOP CTL250-16 tons



LIEBHERR TOWER CRANES 280ECH-12 tons



LIEBHERR TOWER CRANES 280ECH-16tons



LIEBHERR TOWER CRANES ECH-16tons

(OMAN) MIXED PROJECTS

2011-2012



TEREX Flat Top CTT181-8 tons



TEREX FLAT TOP CTT181-8 tons



TEREX FLAT TOP CTT181-8 tons



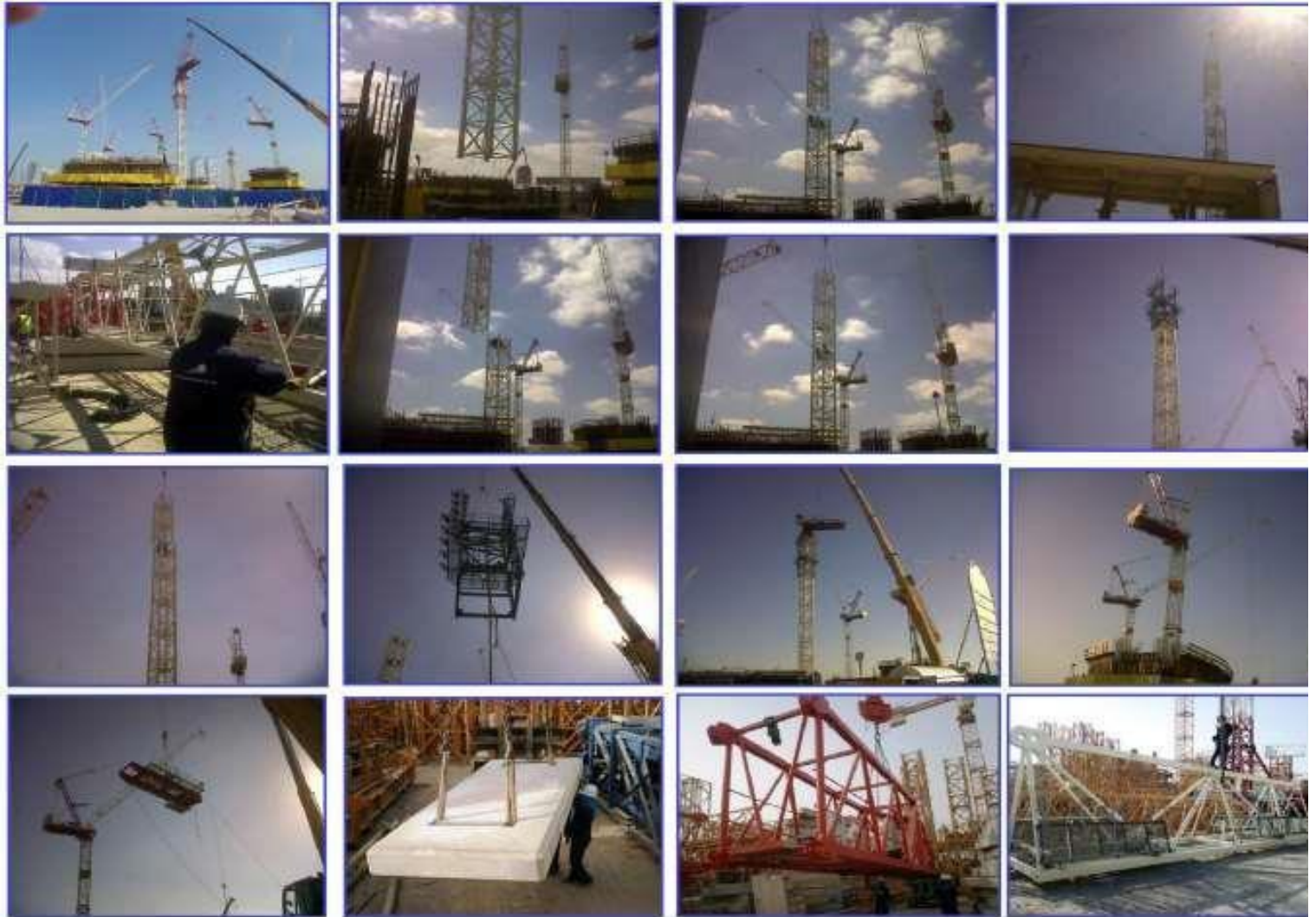
Al Rana Equip. & Machinery Trading LLC.





Al Rana Equip. & Machinery Trading LLC.

OPERATION & MAINTENANCE



In order to satisfy the growing needs of our clients in terms of expert technical knowledge, quick service availability for problems needing immediate attention, for repairs and upkeep of high-tech EOT Cranes, we provide crane repair services that included preventive maintenance and upkeep solutions for the complete assembly.

We take on the responsibility of maintaining the client's material handling equipment and machinery by way of a preventive maintenance contract which is aimed at the prevention of breakdowns and failures of equipment before it actually occurs.

We provide our technical expertise and ready manpower for erection, revamping, overhauling and dismantling services for your entire range of heavy engineering material handling and shifting equipment. You can bank on us for your strategic modification designing and shut down operations since we always maintain an inventory of spare parts and reserved man power for immediate action.



Al Rana Equip. & Machinery Trading LLC.

TESTIMONIAL



BAM International Abu Dhabi LLC

P.O. Box 47100, Abu Dhabi, U.A.E.
Telephone +971 2 644 4100, Fax +971 2 644 0588

Date 17 February 2014

Our reference L-BAM-TP-1535

From Maged Fares

E-mail m.fares@baminternational.com

Page 1 of 1

Subject Appreciation Letter – Al Ain Stadium & Mixed Use Development Project

AI RANA EQUIP. & MACHINES TRDG. EST.
P.O.Box – 22817
Sharjah
United Arab Emirates
Tel. No.: +971 6 543 1415

Attn: Mr. Maher Ounah

To Whom It May Concern


We take this opportunity to appreciate Al Rana Equip. & Machines Trading. Est. for their support and the excellent job they did with the eight (8) tower cranes working on this project during the entire rental period.

Al Rana Equip. & Machines Trading. Est. worked very closely with us from the initial planning stage, preparation of all Method Statements, erection, around the clock service, seven day a week and completing the work with the dismantling.

The quality of services, response to our queries, professional approach and the experience of Al Rana Equip. & Machines Trading. Est. deserves great appreciation.

We certainly look forward to avail your services in our other Projects.

Kind regards,
For Bam International Abu Dhabi LLC


Maged Fares
Project Director





Al Rana Equip. & Machinery Trading LLC.

QUALITY ASSURANCE

Certificate CH18/1275.00



The management system of

Al Rana Equip & Machines Trdg. Est.

P.O Box 22817, Industrial Area #3, AREMATES Bldg, Ground Floor, Sharjah, United Arab Emirates.

has been assessed and certified as meeting the requirements of

ISO 9001:2015

For the following activities:

Import/ Export/ Trading of new and used heavy equipment, sales, rentals, services, spare parts, maintenance for heavy equipment specialized in tower cranes, Earth moving machines, passenger hoists, platforms etc. and form works building system.

This certificate is valid from 24 January 2022 until 20 December 2024 and remains valid subject to satisfactory surveillance audits. Recertification audit due a minimum of 60 days before the expiration date. Issue 2. Certified since December 2015.

This is a multi-site certification.

Additional site details are listed on subsequent pages.

Authorized by

S. Ben D. Willemijn

SGS Société Générale de Surveillance SA
Technoparkstrasse 1 8005 Zurich Switzerland
T +41 (0)44 445-16-90 F +41 (0)44 445-16-98 www.sgs.com



Page 1 of 2



This document is issued by the Company subject to its General Conditions of Certification Services accessible at www.sgs.com/terms_and_conditions.htm. Attention is drawn to the limitations of liability, indemnification and jurisdictional issues established therein. The authenticity of this document may be verified at <http://www.sgs.com/certification-services-and-consulting/certified-client-verify.htm>. Any unauthorized alteration, forgery or falsification of the content or appearance of this document is unlawful and offenders may be prosecuted to the fullest extent of the law.

Certificate CH18/1275.00, continued



Al Rana Equip. & Machines Trdg. Est.

ISO 9001:2015

Issue 2

Additional facilities

Al Rana Equip & Machines Trdg. FZE

P.O. Box No. 42462, Block 2F-03, Hamriyah Free Zone, Sharjah, United Arab Emirates.



Page 2 of 2

This document is issued by the Company subject to its General Conditions of Certification Services accessible at www.sgs.com/terms_and_conditions.htm. Attention is drawn to the limitations of liability, indemnification and jurisdictional issues established therein. The authenticity of this document may be verified at <http://www.sgs.com/certification-services-and-consulting/certified-client-verify.htm>. Any unauthorized alteration, forgery or falsification of the content or appearance of this document is unlawful and offenders may be prosecuted to the fullest extent of the law.

Certificate CH21/0189.00



The management system of

Al Rana Equip & Machines Trdg. Est.

P.O Box 22817, Industrial Area #3, AREMATES Bldg, Ground Floor, Sharjah, United Arab Emirates.

has been assessed and certified as meeting the requirements of

ISO 45001:2018

For the following activities:

Import/ Export/ Trading of new and used heavy equipment, sales, rentals, services, spare parts, maintenance for heavy equipment specialized in tower cranes, Earth moving machines, passenger hoists, platforms etc. and form works building system.

This certificate is valid from 24 January 2022 until 20 December 2024 and remains valid subject to satisfactory surveillance audits. Recertification audit due a minimum of 60 days before the expiration date. Issue 2. Certified since February 2021.

This Organization was previously certified against OHSAS 18001 since December 2015.

This is a multi-site certification.

Additional site details are listed on the subsequent page.

Authorized by

S. Ben D. Willemijn

SGS Société Générale de Surveillance SA
Technoparkstrasse 1 8005 Zurich Switzerland
T +41 (0)44 445-16-90 F +41 (0)44 445-16-98 www.sgs.com



Page 1 of 2



This document is issued by the Company subject to its General Conditions of Certification Services accessible at www.sgs.com/terms_and_conditions.htm. Attention is drawn to the limitations of liability, indemnification and jurisdictional issues established therein. The authenticity of this document may be verified at <http://www.sgs.com/certification-services-and-consulting/certified-client-verify.htm>. Any unauthorized alteration, forgery or falsification of the content or appearance of this document is unlawful and offenders may be prosecuted to the fullest extent of the law.

Certificate CH21/0189.00, continued



Al Rana Equip. & Machines Trdg. Est.

ISO 45001:2018

Issue 2

Additional facilities

Al Rana Equip & Machines Trdg. FZE

P.O. Box No. 42462, Block 2F-03, Hamriyah Free Zone, Sharjah, United Arab Emirates.



Page 2 of 2

This document is issued by the Company subject to its General Conditions of Certification Services accessible at www.sgs.com/terms_and_conditions.htm. Attention is drawn to the limitations of liability, indemnification and jurisdictional issues established therein. The authenticity of this document may be verified at <http://www.sgs.com/certification-services-and-consulting/certified-client-verify.htm>. Any unauthorized alteration, forgery or falsification of the content or appearance of this document is unlawful and offenders may be prosecuted to the fullest extent of the law.



Al Rana Equip. & Machinery Trading LLC.

**AL RANA EQUIP. &
MACHINERY TRDG. LLC**
BUSINESS TOWER # 2701-2702
AL BUHAIRAH CORNICHE, P. O BOX
22817,
SHARJAH, UNITED ARAB EMIRATES
TEL. 009716 5431416 , FAX
009716 5431415
e-mail: aremates@eim.ae /
info@aremates.ae
Website: www.aremates.com

OFFICE TIMING : From Saturday to
Thursday =8:00am – 1:00pm /
2:00pm – 5:45pm



