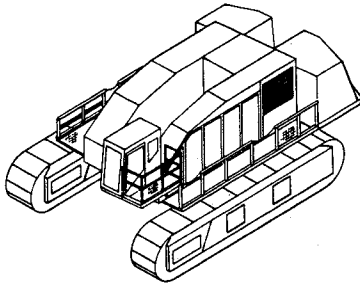
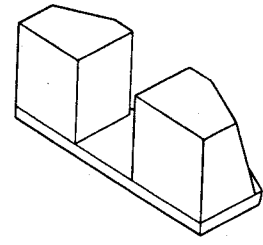


Weights for transporting — approximate

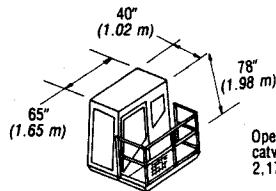
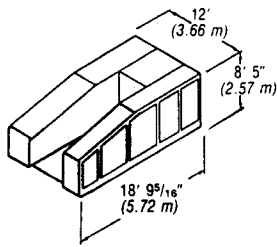
GENERAL INFORMATION ONLY



Complete basic machine including retractable gantry (2,500 lbs. — 1,134 kg) and gantry backstays (1,036 lbs. — 470 kg) counterweight cylinder (900 lbs. — 408 kg), boom stops (1,670 lbs. — 757 kg), 18-part boomhoist bail (1,450 — 658 kg), front and rear drum with 2 1/4" (0.54 m) smooth laggings, load lowering clutches, and drum locking pawls, 1,655' (504 m) of 1 1/4" (31.75 mm) wire rope (4,782 lbs. — 2,169 kg) on one drum, catwalks both sides, and "AB" counterweight:
 With 50" (1.27 m) shoes—385,300 lbs. (174,772 kg)
 With 60" (1.52 m) shoes—395,900 lbs. (179,580 kg)

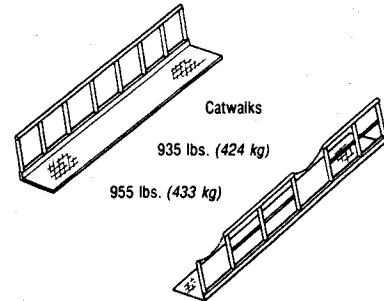


"A" counterweight 60,000 lbs. (27,216 kg)
 "AB" counterweight 134,500 lbs. (61,009 kg)

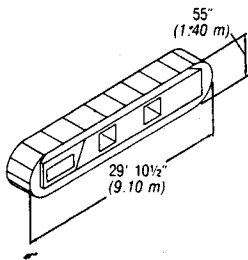


Operator's cab with catwalks and support — 2,170 lbs. (984 kg)

Basic upper with front and rear drums with load lowering clutches and drum locking pawls but no laggings or wire rope; with turntable bearing disconnect mechanism; without boom stops, retractable gantry and gantry backstays, and 18-part boomhoist bail:
 73,100 lbs. (33,158 kg)

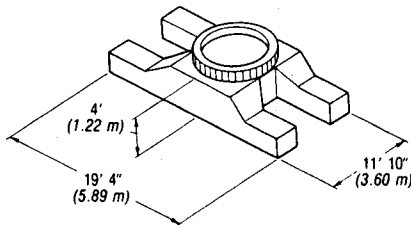
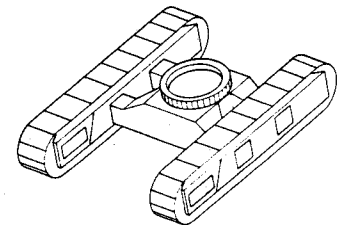


Catwalks
 935 lbs. (424 kg)
 955 lbs. (433 kg)



One crawler side frame
 With 50" (1.27 m) shoes — 57,160 lbs. (25,928 kg)
 With 60" (1.52 m) shoes — 62,460 lbs. (28,332 kg)

Complete crawler mounting with turntable bearing
 50" (1.27 m) shoes — 158,040 lbs. (71,687 kg)
 60" (1.52 m) shoes — 168,460 lbs. (76,413 kg)



Lower frame with turntable bearing
 43,720 lbs. (19,831 kg)

	Pounds	kg
35' (10.67 m) heavy duty and/or long range boom base section complete with deflector roller, 4 connecting pins, and boom angle indicator	6,500	2 948
35' (10.67 m) heavy duty boom top section complete with deflector rollers, 6 head sheaves with wire rope guards, and basic boom suspension pendants	9,350	4 241
50' (15.24 m) jib for heavy duty boom, including jib mast and staylines	4,210	1 910
120' (36.58 m) jib for heavy duty boom, including jib mast and staylines	6,910	3 134
20' (6.10 m) long range boom mid-section	1,794	814
45' (13.72 m) long range boom top section complete with deflector rollers, 2 head sheaves with wire rope guards, and basic boom suspension pendants	5,840	2 649
30' (9.14 m) jib for long range boom, including jib mast and staylines	2,010	912
100' (30.48 m) jib for long range boom, including jib mast and staylines	3,900	1 769
Boom live mast complete with boomhoist bridle and 18-part, 1,065' (325 m) boomhoist wire rope	9,550	4 331
Fairleader	2,460	1 116
Tagline winder with mounting plate and 200' (60.96 m) tagline wire rope	1,450	658

Machine working weights — approximate

Machine with 70' (21.34 m) heavy duty boom, boom live mast, 50" (1.27 m) shoes, and "AB" counterweight	410,700 lbs. (186 294 kg)
Machine with 100' (30.48 m) long range boom, boom live mast, 50" (1.27 m) shoes, and "AB" counterweight	409,000 lbs. (185 522 kg)