



TAYLOR MACHINE WORKS, INC.

# TX-550RC

REMOVABLE COUNTERWEIGHT  
36 OR 48-IN. LOAD CENTER MACHINES

you  
can  
depend  
on

*Big Red*



## TX-550RC Model and Capacities

- 55,000-lbs (25,000 kg) at 36-in (915 mm) Load Center
- 48,000-lbs (21,800 kg) at 48-in (1,220 mm) Load Center
- 144-in. (3,683 mm) Wheelbase
- 30,000-lbs (13,608 kg) Removable Counterweight
- 46,000-lbs (20,866 kg) Vehicle Transport Weight w/o Counterweight

ENGINEERING DONE RIGHT THROUGH  
**FAITH VISION WORK**

\*Featured truck is shown with available options.



# TX-550RC

Taylor Machine Works was built on the premise, "We engineer and build what you need." This is just as true today as it was in 1927. We can design, engineer, and manufacture equipment tailored specifically to meet the material handling needs of your business.

Taylor Machine Works is acknowledged to be one of the top lift truck manufacturers in the world today, and reaffirming that reputation is the TX-550RC (Removable Counterweight).



The TX-550RC features the most dependable mast and carriage in its class. Known for their innovative design, this mast and carriage gives you the confidence in knowing it will work every time you need it. Even when maintenance is required you can feel safe knowing our engineers have designed our mast and carriage to be as easy to maintain and repair as possible.

The standard 10-ft, full 62-in. (1,575 mm) free lift, direct-lift mast features a nested channel design with two lifting eyes and bolt-on caps, permitting safe and easy removal.

The "C" type carriage has a high strength-to-weight ratio with Forks that are pin-mounted and fully adjustable from 100-in. (2,540 mm) outside to 2-in. (51 mm) inside the center brace. The main rollers have shielded, tapered, roller bearings, while the chain rollers are shielded ball bearing construction. The carriage side rollers are adjustable to compensate for wear. All rollers can be lubricated.

The TX-550RC lift truck has a lift capacity of 55,000-lbs at a 36-in load center. The removable counterweight is a simple added feature that allows the truck to be lifted into a ship's hull or other space that doesn't allow for drive-in access. The 4 removable pins and 4 lifting eyes make it easy to remove and install the counterweight.\*

\*Caution should always be taken when moving any load. Please refer to manual for proper procedures before removing the counterweight.



The pin-mounted forks are hammer forged from heat treated steel with increased thickness in critical heel sections. The forks are fully adjustable from full width of carriage to +/-2-in. Lengths and widths vary depending on your particular needs and model type.



The mast and carriage main rollers are common and use Timken® tapered roller bearings. Chain rollers use sealed ball bearings. Common, cast nylon, side thrust pads are adjustable to compensate for wear.

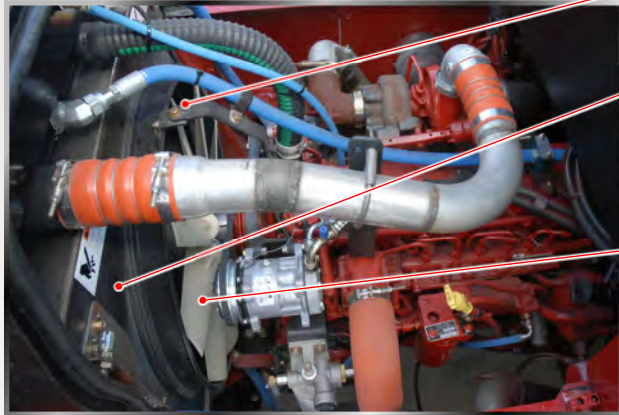


**The 4 removable pins and 4 lifting eyes make it easy to remove and install the counterweight.\***

\*Caution should always be taken when moving any load. Please refer to manual for proper procedures before removing the counterweight.



# TX-550RC

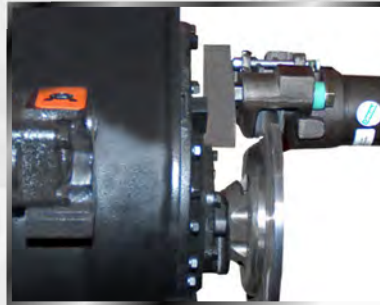


**Engine mounted sealed fan shroud insures maximum air flow**

**Cooling includes:**

- engine charge air cooler
- engine coolant air cooler
- transmission oil air cooler
- separate wet disc and hydraulic oil air cooler.

**High-output pusher fan**



**Transmission output shaft disc mounted, parking brake Spring on – Hydraulic off Instrument panel mounted control**



**Bolted Fuel Tank -**

- 93 gallon capacity
- easily removable
- heavy gauge steel wall
- integral strainer



**Dual element air cleaner with restriction indicator**

**ENGINE**

- Tier Certified Cummins electronic, low emissions (see specification sheet for engine detail)
- Lower fan speed and engine speed for less noise
- Electronic diagnostics on engine with fault code history for easy diagnostics and repair
- Built-in emergency shut-down system for engine and transmission
- All service and daily checks can be made easily from the running boards
- High capacity charge air, engine coolant, transmission coolant and hydraulic oil cooling system
- Easily serviceable, bolted, 3-section cooling system

**TRANSMISSION**

- Heavy-duty 3-speed Powershift transmission
- High capacity 12-plate clutch system for added durability
- Operator controlled hydraulic inching for precise vehicle position control
- Automatic Powershift Control (APC)
- Full directional modulation for soft directional changes
- Transmission oil cooler is part of the bolted, 3-section cooling system
- Cooler has wide fin spacing to resist plugging
- Remote mounted filter to reduce oil spills
- Flex-plate drive
- Full width transmission mount goes from rail to rail in chassis for a more stable drivetrain



**Heavy-duty steer axle** is a single hydraulic cylinder design with heavy-duty links from the cylinder ram directly to tapered roller bearing mounted spindles.

**Sliding engine hood**

Easily removable for greater access (All service and daily checks can be made easily from running boards)

**Counterweight lifting eyes**

**Chassis lifting eyes**



**A simple manual cab tilt pump is standard** with an optional powered cab tilt pump available



**Positive rim mountings**

**Bolted Hydraulic Tank -**

- easily removable
- heavy gauge steel wall
- serviceable filter element
- remote mounted breather
- internal suction screen
- 82-gallon capacity

**Full flow, in-tank, 10-Micron return filtration**



**RELIABLE PERFORMANCE**

The TX-550RC line of industrial pneumatic lift trucks are designed and engineered with the operator and service personnel in mind. Each TX-550RC lift truck uses a Tier Certified Cummins® electronic turbocharged, charge air aftercooled (air to air) diesel engine. Standard engine features include electronic diagnostic and maintenance monitor, fuel/water separator and engine/transmission protection systems, improved fuel economy, and reduced emissions.

The TX-550RC comes standard with top of the line features such as:

- TIER certified high output engine
- High capacity cooling system
- Heavy-duty transmission
- Heavy-duty planetary drive axle
- Heavy-duty, proven steer axle
- TICS (Taylor Integrated Control System)
- All-welded steel chassis



Mast lifting eyes

Manual cab tilt - standard  
Optional powered tilt

Outboard mounted heat  
shielded muffler with  
vertical stack

Internal, force-cooled  
hydraulic actuated  
service brakes

Heavy-duty bolted planetary  
drive axle  
6 planetary pin, force-cooled  
wet disc brakes

# TX-550RC



**Two brake pedals**  
left – brakes and inching  
right – brakes only



**Comfortable adjustable arm rest**  
with fingertip joystick control for  
smooth precise handling



**Spacious uncluttered cab**  
with tilt steering, hinge-down dash,  
climate controls and adjustable  
seating  
Premium vinyl or cloth seat that  
rotates 15° left and 20° right



**Easy to understand diagnostic display.** TICS (Taylor Integrated Control System) using CANbus technology is standard on the TX-550RC

The TX-550RC features a spacious, all steel cab with increased leg and head room, sound deadening rubber mat flooring, tilt steering wheel, simple T-shaped dash with hinge down instrument panel, fingertip electric joystick controls, and optional climate control system for operator comfort and convenience.

The tilt steering column and the adjustable full-suspension air-ride seat places your operator in the utmost comfort. The right-side armrest's adjustment capabilities allows even the most demanding operator to place the truck's controls within easy reach. The fingertip controls, on the the low effort joystick, allow the operator to control the mast and carriage with ease and comfort.

This blend of ergonomics and technology will help your operator be more efficient with the job at hand... handling materials.



**Dual panoramic interior rear view mirrors** standard  
Dual external side view mirrors standard  
Optional pedestrian camera and monitor



**FEATURES...**



**FEATURES...**



**FEATURES...**

## COMFORT & SAFETY

# 36 OR 48-IN. LOAD CENTER MACHINES



**Key-switch actuated  
amber strobe light**



**Highly audible air horns**



**Forward activated alarm**

**Unobstructed rear view**  
The air snorkel and shielded exhaust are mounted on the corners of the cab to keep the view open.

**Climate control system**  
Option shown

**Overhead work lights**  
for improved safety and  
visibility

**External side view  
mirrors standard**

**Sliding engine hood**

**Removable counterweight**

**Multiple lifting eyes**

**Reverse activated alarm**  
**Sloped counterweights**  
for improved rear visibility

**Self cleaning, anti-slip, steps**  
3-point mounting and dismounting



**QUALITY ASSURED AND**



# The Best Support In The World!



No-one can match our record for service and reliability.

Worldwide customer service, backed by over 83 years of Taylor® customer satisfaction and trust.



**Sudden Service, Inc.**  
649 N. Church Ave.  
Louisville, MS 39339-2022  
Phone (662) 773-8056  
Fax (662) 773-9157  
[suddenserviceinc.com](http://suddenserviceinc.com)

you can depend on

“*Big Red*”

is a personal and collective commitment from the Taylor "Big Red" Team® to every customer. Customer needs and expectations are the main priorities for Taylor® engineering, manufacturing, marketing, and service organizations. Sudden Service, Inc.® and our worldwide Taylor® dealer network are ready to respond to your requests for support twenty-four hours a day, seven days a week!

Genuine Parts • Unbeatable Service • Trusted Support



**Taylor Machine Works, Inc.**  
650 North Church Avenue  
Louisville, Mississippi 39339-2017  
Phone (662) 773-3421 Fax (662) 773-9146  
[taylorbigred.com](http://taylorbigred.com)

TMW-BR-109 10/1/10