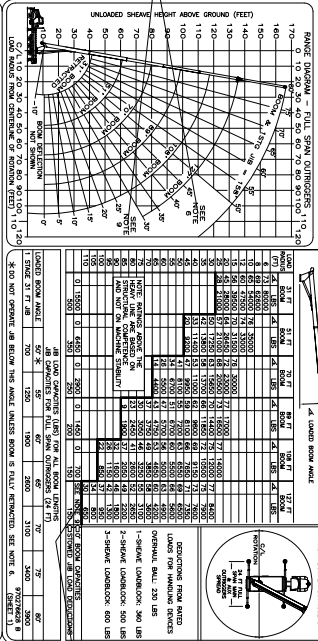


REVISIONS			
NO.	DESCRIPTION	DATE	BY
A	REVISION		
B	ADD SHEET FROM PLACING		

"ALTEC" AND MODEL LETTERING TO BE WHITE ON BLACK BACKGROUND BORDER

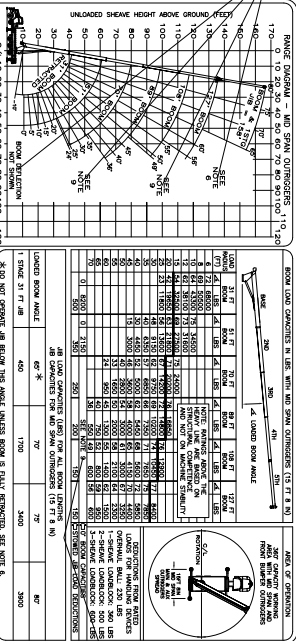
MODEL-NMC-AC40-127S-HL

BLACK COLOR TEXT ON YELLOW BACKGROUND



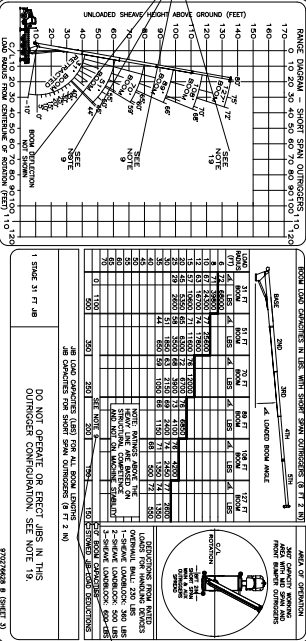
7.53
BLACK COLOR TEXT WITH YELLOW BACKGROUND IN THIS BOX

BLACK COLOR TEXT ON YELLOW BACKGROUND



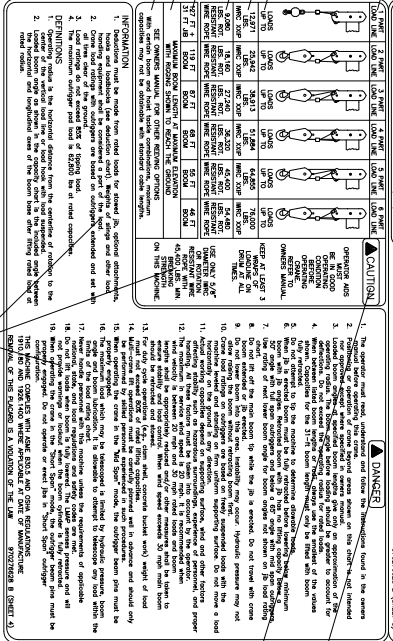
6.74
BLACK COLOR TEXT WITH YELLOW BACKGROUND IN THIS BOX

BLACK COLOR TEXT ON YELLOW BACKGROUND



6.74
BLACK COLOR TEXT WITH YELLOW BACKGROUND IN THIS BOX

BLACK COLOR TEXT ON WHITE BACKGROUND



8.26
SEE NOTE 3 FOR COLORING

BLACK COLOR TEXT ON YELLOW BACKGROUND

- NOTES:
1. BLACK COLOR LINENWORK AND LETTERS ON WHITE BACKGROUND EXCEPT WHERE NOTED.
 2. "DANGER" AND EXCLAMATION MARK TO BE WHITE COLOR ON A RED COLOR BACKGROUND AS INDICATED BY BORDER OUTLINE ON DRAWING.
 3. "CAUTION" AND EXCLAMATION MARK TO BE YELLOW COLOR ON A BLACK BACKGROUND AS INDICATED BY BORDER OUTLINE ON DRAWING.
 4. PART TO BE PRODUCED IN ACCORDANCE WITH ALTEC STANDARD STS-0002 (TYPE 2A) LEXAN LAMINANT FILM.
 5. ALL TEXT TO BE SOLID FILL.
 6. THE PLACARD SHOULD BE SPLIT INTO (4) INDIVIDUAL PARTS PER DIMENSIONS SHOWN.

SCALE: NONE

DATE: 11/04/2010

SCALE: NONE WEIGHT: NONE SIZE: NONE NUMBER: 5 REV: 970276628

FILE: PLACARD, BOOM CAPACITY, NMC-AC40-127S-HL

Sheet 1 of 5