



FOR NEW EQUIPMENT SALES, CALL
800.958.2555
TO SPEAK WITH AN ALTEC REPRESENTATIVE
or visit us online at altec.com

 **Altec**[®]
ARTICULATING TELESCOPIC
AERIAL DEVICE

Courtesy of Crane.Market

AH 75A/85A/100A

FEATURES

- Articulating and Telescoping Lower and Upper Booms
- 2100 lbs (953 kg) Total Boom-tip Capacity in Any Boom Position
- Fiberglass Platform
 - » 1300 lbs (590 kg) 40 x 60 x 42 in
 - » End Mounted Rotating Platform
- Material Handling System
 - » Up to 1500 lbs (680 kg) jib capacity in any boom position
 - » Hydraulically Extending and Articulating Jib
 - » 180 Degree Horizontal Rotation of Jib Assembly (Manual)
- Automatic Hydraulic Platform Leveling
- Single Handle Upper Control with Safety Interlock
- Category A Upgradeable - Standard Configuration Includes:
 - » Corona Ring
 - » Lower Conductive Shield
 - » Pre-wired for Leakage Monitor
- Two Hydraulic Tool Circuits at Boom Tip
- Radial Outriggers
- Outrigger Boom Interlock System
- Secondary Stowage System
- Outrigger Motion Alarm
- Back-Up Alarm

OPTIONS

- Platforms
 - » Aluminum 2100 lbs capacity 36 x 70 x 42 in
 - » Aluminum 2100 lbs capacity 36 x 96 x 42 in
 - » Fiberglass 800 lbs capacity 24 x 48 x 42 in
- Current Leakage Monitor
- Hydraulic Intensifier at Platform
- Fall Protection System
- Platform Liner
- Outrigger Pads
- Wheel Chocks

Recommended safety equipment, available through Altec Supply, include a platform liner, fall protection system, wheel chocks and outrigger pads.



LIGHTWEIGHT DESIGN

The lightweight boom design maximizes payload and increases options for chassis configuration.



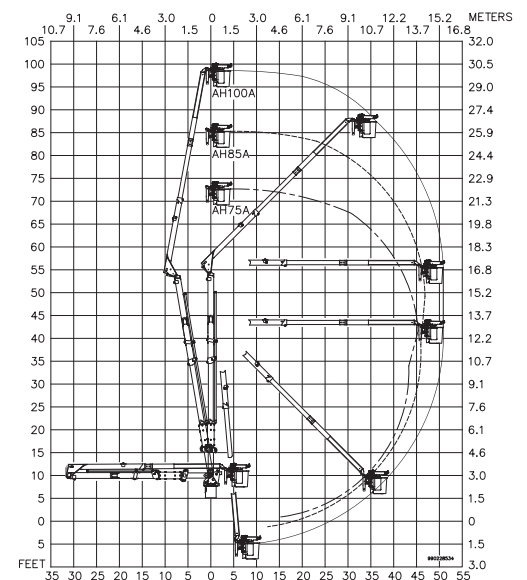
PLATFORM CAPACITY

The fiberglass platform capacity holds up to 1300 lbs for increased productivity.

CONFIGURATIONS

	AH75A	AH85A	AH100A
Ground to Bottom of Platform*	68.0 ft (20.7 m)	80.0 ft (24.4 m)	95.0 ft (29.0 m)
Working Height*	73.0 ft (22.3 m)	85.0 ft (26.0 m)	100.0 ft (30.5 m)
Maximum Side Reach	46.0 ft (13.7 m)	48.0 ft (14.6 m)	50.5 ft (15.4 m)
Stowed Travel Height*	12.2 ft (3.8 m)	12.5 ft (3.8 m)	12.5 ft (3.8 m)
Upper Boom Isolation	14.0 ft (4.3 m)	14.0 ft (4.3 m)	14.0 ft (4.3 m)
Lower Boom Isolation	18.0 in (457 mm)	18.0 in (457 mm)	18.0 in (457 mm)
Platform Capacity	1300 lb (590 kg)	1300 lb (590 kg)	1300 lb (590 kg)
Max. Boom Dielectric Rating	500 kV	500 kV	500 kV
Upper Boom Articulation	0° - 160°	0° - 160°	0° - 160°
Upper Boom Telescopic Extension	5.0 ft (1.5 m)	7.0 ft (2.1 m)	11.0 ft (3.4 m)
Lower Boom Articulation	0° - 105°	0° - 95°	0° - 90°
Lower Boom Telescopic Extension	8.0 ft (2.4 m)	11.0 ft (3.4 m)	14.0 ft (4.3 m)
Rotation	Continuous	Continuous	Continuous

*Based on a 40 in (1016 mm) chassis frame height in compliance with ANSI A92.2.



For more complete information on Altec products and services, visit us on the web at www.altec.com. Material and specifications are subject to change without notice. Featured units in photos may include optional features. Please contact an Altec representative for all available options. Altec® and the Altec logo are registered trademarks of Altec Inc. in the United States and various other countries and may not be used without permission.

© 2016 Altec Inc. All Rights Reserved. AIOSAH7585100A-0716-v1-r3