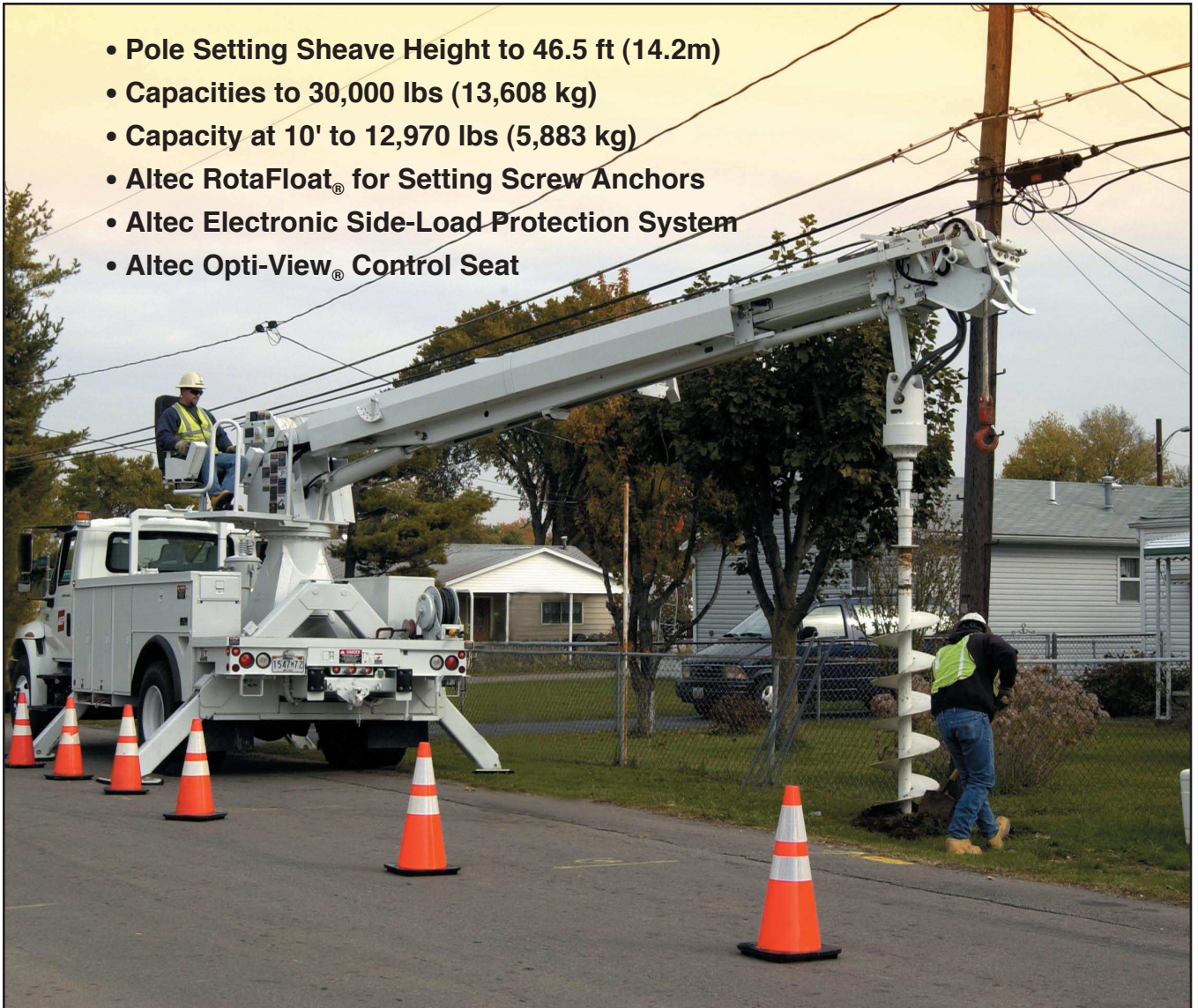




- Pole Setting Sheave Height to 46.5 ft (14.2m)
- Capacities to 30,000 lbs (13,608 kg)
- Capacity at 10' to 12,970 lbs (5,883 kg)
- Altec RotaFloat<sup>®</sup> for Setting Screw Anchors
- Altec Electronic Side-Load Protection System
- Altec Opti-View<sup>®</sup> Control Seat





## STANDARD FEATURES

- Hydraulically Extending Full Capacity Fiberglass Upper Boom
- Continuous Rotation with High Capacity Worm Drive Gearbox
- Outrigger Controls with Motion Alarms and Tool Circuit at Tailshelf
- Operator Main Control Panel with Multi-Lever Controls
- Emergency Stop Switch on Main Control Panel(s)
- Five Function Hydraulic Overload Protection System
- Hydraulic Side Load and Boom Storage Protection Systems
- 15,000 lbs Capacity Turntable Winch with Rope/Cable Guides
- Fiberglass Boom Tip and Transferable Steel Flares for Pole Setting
- Hydraulically Tilting Pole Guides with Pole Guide Interlock
- Insulated per ANSI "46 kV and below" Dielectric Rating
- Altec Proportional Control System
- Painted White with the Altec Powder Coat Paint Process
- Designed and Manufactured in Facilities Certified to ISO 9001
- Outrigger Boom Interlock System
- Back Up Alarm

## OPTIONS

- Behind Cab and Corner Mount
- Boom Tip Winch
- High Speed (12,000 lbs) Winch
- Traditional Control Seat
- Altec Opti-View® Control Seat
- Engine Foot Throttle
- Control and Platform Covers
- Radio Remote Main Control Panel
- Radio Remote Upper Controls
- Platform
- Altec RotaFloat®
- Hydraulic Upper Controls
- Altec Electronic Side Load Protection

## RECOMMENDED FEATURES

- Fall Protection System
- Platform Liner
- Wheel Chocks
- Outrigger Pads

## GENERAL SPECIFICATIONS

	DM45		DM47		DL42		DL45	
Maximum Lift Capacity	30,000 lb	13,608 kg	30,000 lb	13,608 kg	30,000 lb	13,608 kg	30,000 lb	13,608 kg
Maximum Capacity at 10' Radius (Without Options)	12,970 lb	5883 kg	12,340 lb	5597 kg	10,280 lb	4663 kg	9,850 lb	4468 kg
Pole Setting Sheave Height	44.4 ft	13.5 m	46.4 ft	14.2 m	41.4 ft	12.6 m	44.3 ft	13.5 m
Reach from Centerline of Rotation	35.0 ft	10.6 m	37.0 ft	11.3 m	31.6 ft	9.6 m	34.6 ft	10.5 m
Dig radius from Centerline of Rotation								
Minimum	16.0 ft	4.8 m	17.9 ft	5.5 m	14.2 ft	4.3 m	15.7 ft	4.8 m
Maximum	24.8 ft	7.5 m	26.7 ft	8.1 m	21.5 ft	6.5 m	24.5 ft	7.4 m
Boom Articulation, degrees	-20 to 80		-20 to 80		-18 to 84		-18 to 84	
Rotation	Continuous		Continuous		Continuous		Continuous	
Travel Height, approximate*	11.9 ft	3.6 m	11.9 ft	3.6 m	11.9 ft	3.6 m	11.9 ft	3.6 m

\* Based on chassis frame height of 40 inches (1016 mm) per ANSI A10.31-1995.

Altec Digger Derricks meet or exceed all applicable ANSI Standards as of the date of manufacture. Altec reserves the right to improve models and change specifications without notice or obligation.



*Altec Opti-View® Control Seat increases operator comfort and provides a full view of the work area.*

Altec Sales and Service



Manufacturing and Service Facilities Located  
Throughout the United States and Canada  
[www.altec.com](http://www.altec.com)

**Altec Industries, Inc.**

Post Office Box 10264  
Birmingham, Alabama 35202  
Phone 205/991-7733  
Fax 205/991-9993