



FOR NEW EQUIPMENT SALES, CALL
800.958.2555
TO SPEAK WITH AN ALTEC REPRESENTATIVE
or visit us online at altec.com

 **Altec**
TELECOMMUNICATIONS
CABLE PLACING AERIAL DEVICE

T40P

FEATURES

- Telescopic Non-Insulating Cable Placing Aerial Device with Boom Rest
- Two-Stage Hydraulic Boom Extension
- Pendant Lower Controls
- Hydraulic Platform Leveling System
- Single Handle Proportional Controls at Platform
- Engine Start/Stop at Upper and Lower Controls
- Manual Lowering Valve
- Closed Center Hydraulic System
- 120 VAC Circuit at Boom Tip with GFI Outlet in the Platform
- Fixed Mounted Arms for Optional Pulling Eye and Fairlead
- Two-Way Voice Communication System
- Tool boxes for the Platform
- Minimum Chassis Requirements of 26,000 lb (11,793 kg) 84 in CA or a 33,000 lb (14,982 kg) 114 in CA

OPTIONS

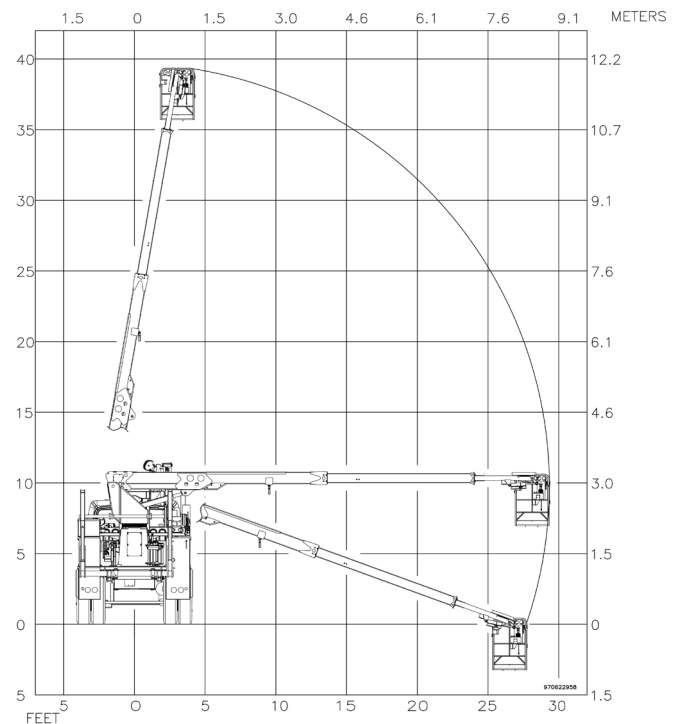
- Fairlead at the Platform
- Secondary Stowage System
- Reel Lifter/Driver with Automatic Engaging Hydraulic Drive
- 6,000 lb (2,724 kg) Reel Lifter/Driver
- 6,000 lb (2,724 kg) Reel Lifter/Driver with Brakes
- Cable Stringing Bull Wheel System with Towline (Requires Different Boom Rest)
- Pre-Lashing Package (Includes Lasher and Controls)
- 2,000 lb (908 kg) Strand Carrier
- 2,000 lb (908 kg) Strand Carrier with Brakes
- Lifting Chain for Strand Loading
- Capstan Winch Mounted on Curbside Reel Lifter Arm
- Pendant Foot Controller for Capstan Winch
- Platform Covers
- Platform Heater
- D-Block Storage Bins
- Inverter for 110V Power
- Steel and Fiberglass Body Configurations Available

Additional accessories available through Altec Supply include a fall protection system and wheel chocks.

SPECIFICATIONS	Ground to Bottom of Platform	35.7 ft (10.8 m)
	Working Height*	40.7 ft (12.4 m)
	Maximum Side Reach (at Platform Height)	29.4 ft (8.9 m) 7.0 ft (2.1 m)
	Stowed Travel Height*	11.5 ft (3.5 m)
	Platform Capacity	500 lb (227 kg)
	Platform Dimensions (End-Mount, Nominal with Pulling Eye)	29 x 29 x 43 in (737 x 737 x 1,092 mm)
	Lower Boom Articulation	-20 to 80°
	Side Load Capacity (with Boom Fully Extended)	600 lb (272 kg)
	Lower Boom Lifting Eye	2,000 lb (907 kg)
	Rotation	Non-Continuous, 370°

*Based on a 40 in (1016 mm) chassis frame height.

REACH DIAGRAM



PROPORTIONAL JOYSTICK PLATFORM CONTROLS



REEL LIFTER/DRIVER WITH AUTOMATIC ENGAGING HYDRAULIC BI-DIRECTIONAL DRIVE



PENDANT MOUNTED CAPSTAN CONTROLS FOR SAFE EFFICIENT CAPSTAN OPERATION



For more complete information on Altec products and services, visit us on the web at www.altec.com. Material and specifications are subject to change without notice. Featured units in photos may include optional features. Please contact an Altec representative for all available options. Altec® and the Altec logo are registered trademarks of Altec Inc. in the United States and various other countries and may not be used without permission. © 2015 Altec Inc. All Rights Reserved. AIOST40P-0215-v1