



FOR NEW EQUIPMENT SALES, CALL
800.958.2555
TO SPEAK WITH AN ALTEC REPRESENTATIVE
or visit us online at altec.com

 **Altec**
BACKYARD
AERIAL DEVICE

Courtesy of Crane.Market

TDA58

FEATURES

- Altec ISO-Grip® Control System
- Independent Controls for Two Lower Arms
- Radio Remote Controller
- Outrigger Controls with Motion Alarms
- Outrigger Boom Interlock System
- Insulating, ANSI Category C
- Track-Driven Carrier with Retractable Tracks to 34 in (863.6 mm)
- 24 x 24 in (610 x 610 mm) Platform with 400 lb (181.4 kg) Capacity - Includes Liner and Platform Cover
- 7.5 PSI (.5 bar) Ground Pressure
- Handheld Pendant Ground Drive Controls
- Drive/Outrigger and Aerial Device Selector Switch
- Carrier Speed - 2mph (3.2 kph)

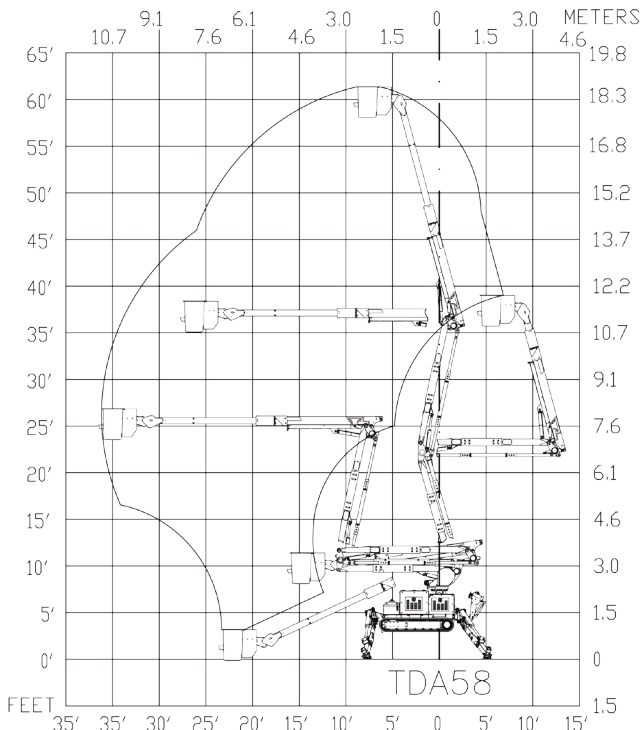
OPTIONS

- Remote Start/Stop
- Remote Start/Stop with Secondary Stowage
- Platform Throttle Control
- Auto Oil Warming System
- 21,000 lb (9,513 kg) GVWR Tilt-Deck Trailer (Tri-Axle)
- Non-Marking Tracks
- 24 x 30 in (610 x 762 mm) Platform with 450 lb (204.1 kg) Capacity
- Extended Warranty

| | | | |
|-----------------------------------------------------------------|-------------------------------------------|--------------------------------|----------------------|
| SPECIFICATIONS | Ground to Bottom of Platform | 58.0 ft (17.7 m) | |
| | Working Height | 63.0 ft (19.2 m) | |
| | Maximum Reach from Centerline of Rotation | 36.2 ft (11 m) | |
| | Platform Capacity | 400 lb (181.4 kg) | |
| | Articulating Arm Articulation (Lower) | 0 to 74° | |
| | Articulating Arm Articulation (Upper) | 0 to 75° | |
| | Upper Boom Articulation | -25 to 75° | |
| | Upper Boom Telescopic Extension | 111.5 in (2,832 mm) | |
| | Stowed Travel Height* | 9.8 ft (3.0 m) | |
| | Stowed Travel Length | 21.2 ft (6.5 m) | |
| | Boom Isolation Gap | Minimum (When Fully Retracted) | 32.3 in (819.2 mm) |
| | | Maximum (When Fully Extended) | 45.9 in (1,166.6 mm) |
| | Articulating Arm Isolation Gap | 19 in (482.6 mm) | |
| | Lowest Insulation Point | 14.2 ft (4.3 m) | |
| Fuel Tank | 12 gal (45.4 L) | | |
| Rotation | Continuous | | |
| Maximum Track Extension Width | 47 in (1,193.8 mm) | | |
| Minimum Track Retraction Width | 34 in (863.6 mm) | | |
| Track Length | 96 in (2,438 mm) | | |
| Maximum Drive Slope | 20° Front to Back | | |
| | 16° Side to Side | | |
| Weight of Machine (Including Aerial Device and Tracked Carrier) | 13,820 lb (6,260 kg) | | |
| TRAILER SPECIFICATIONS | | | |
| Minimum GVWR | 21,000 lb (9,513 kg) | | |
| Weight of Trailer | 4,590 lb (2,079 kg) | | |
| Height on Trailer | 12.4 ft (3.76 m) | | |

Additional accessories available through Altec Supply include platform liners, fall protection systems, and outrigger pads.

REACH DIAGRAM



HYDRAULIC POWERED TELESCOPING RADIAL OUTRIGGERS



RETRACTS TO 35 INCHES TO ALLOW PASSAGE THROUGH GATES



PRESSURE SENSING, SWIVEL FOOT ALLOWS EASY SET-UP



TILT STYLE TRAILER ELIMINATES RAMPS



For more complete information on Altec products and services, visit us on the web at www.altec.com. Material and specifications are subject to change without notice. Featured units in photos may include optional features. Please contact an Altec representative for all available options. Altec® and the Altec logo are registered trademarks of Altec Inc. in the United States and various other countries and may not be used without permission.

© 2016 Altec Inc. All Rights Reserved. AIOSTDA58-0916-v3