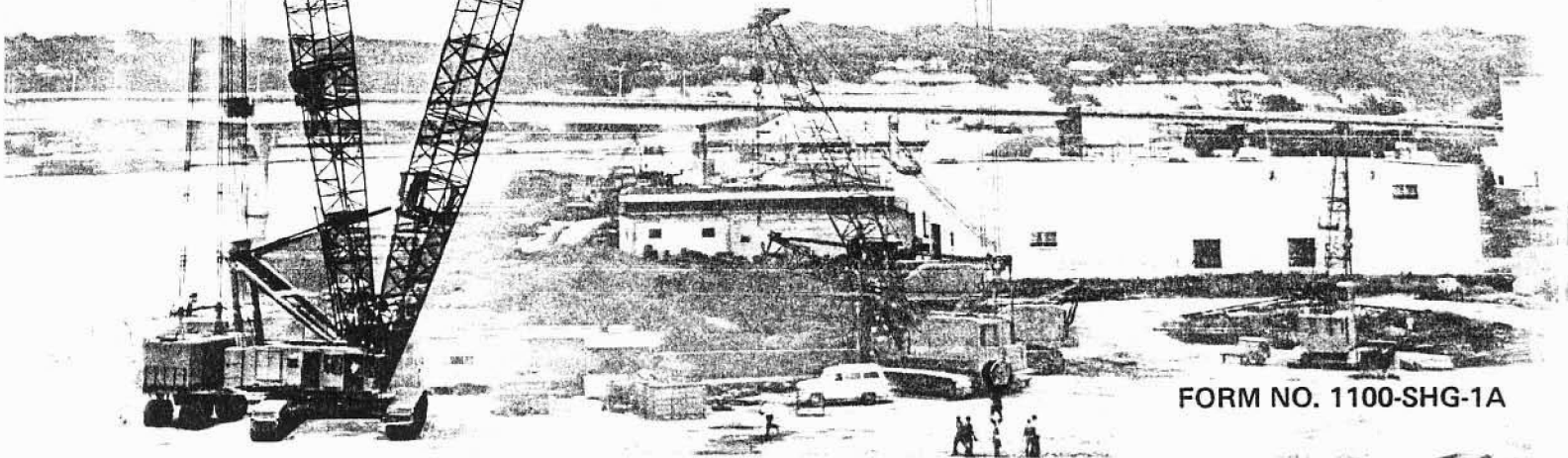
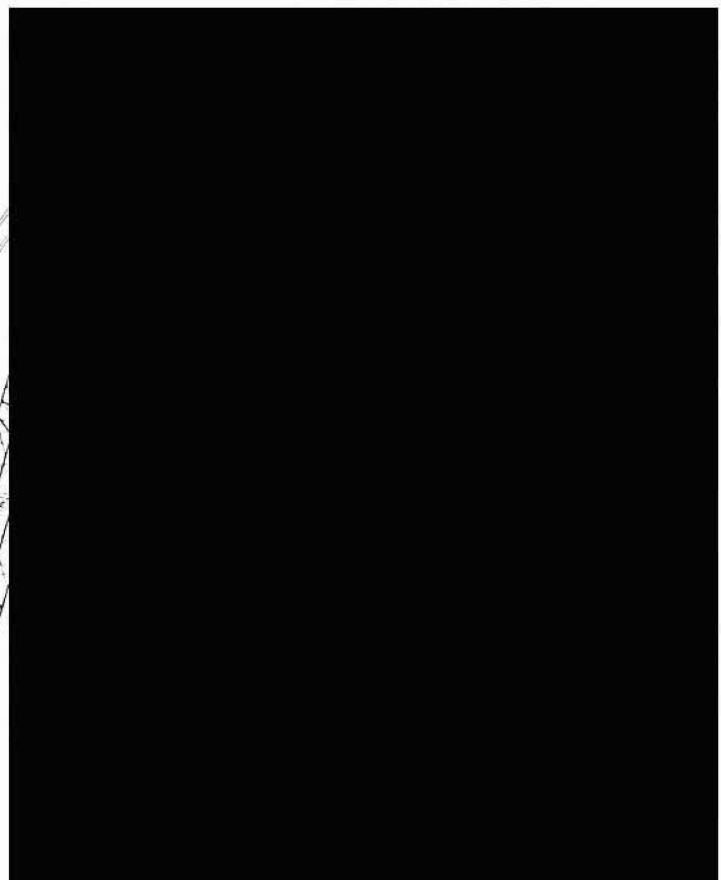
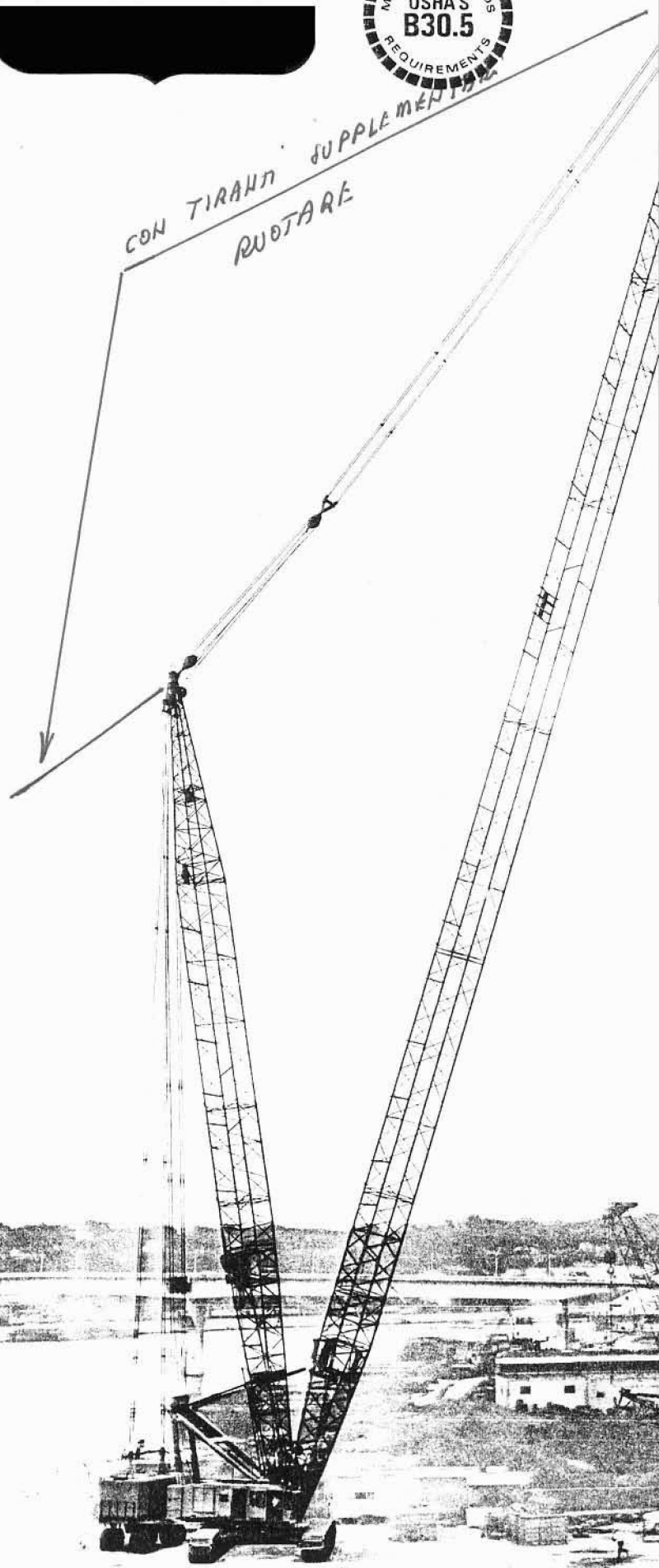


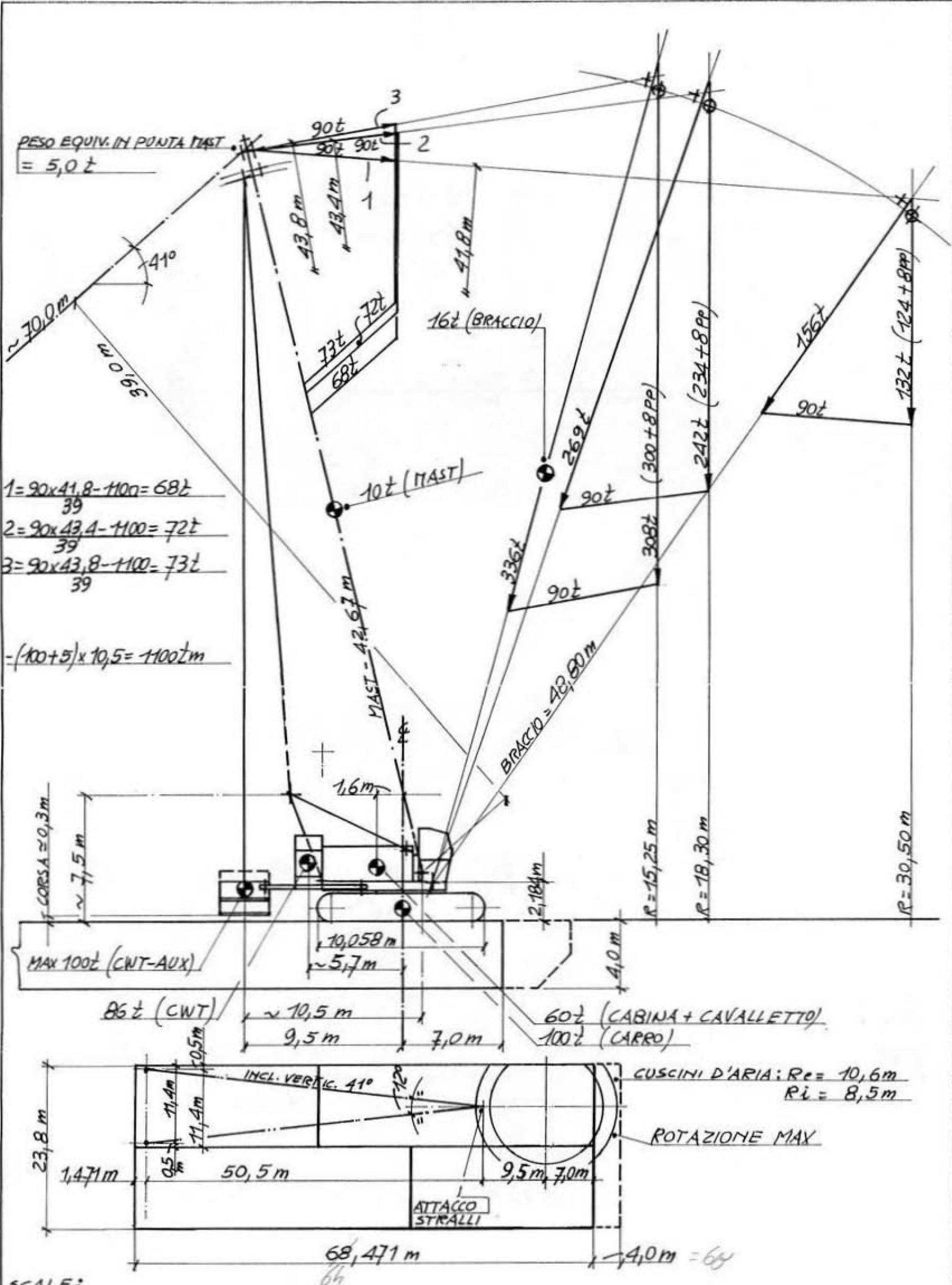
AMERICAN®



CON TIRANTI SUPPLEMENTARI
RUOTARE



FORM NO. 1100-SHG-1A



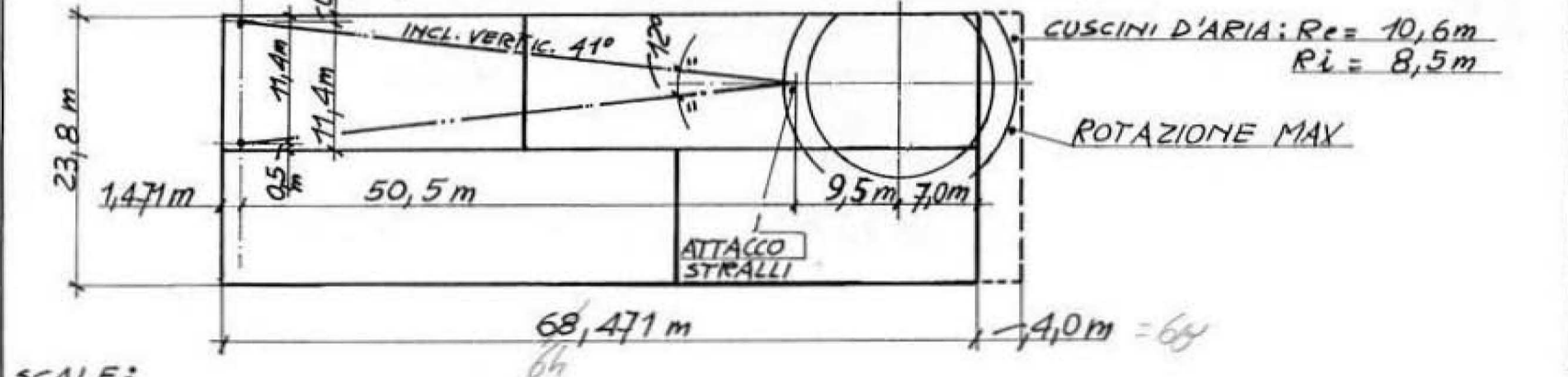
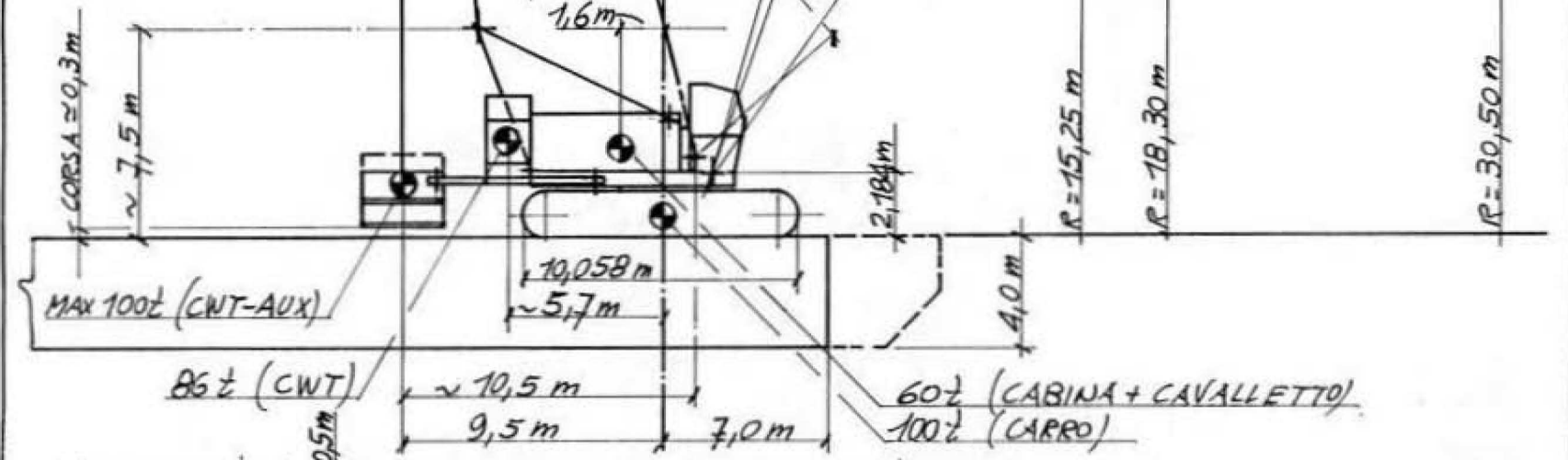
PESO EQUIV. IN PUNTA MAST
= 5,0 t

$$1 = \frac{90 \times 41,8 - 1100}{39} = 68t$$

$$2 = \frac{90 \times 43,4 - 1100}{39} = 72t$$

$$3 = \frac{90 \times 43,8 - 1100}{39} = 73t$$

$$-(100 + 5) \times 10,5 = -1102tm$$



SCALE:
1cm = 2m
1cm = 20t

DB - ALLESTIMENTO SPECIALE TIPO "GUY DERRIK"

Lg: MAST = 42,67 m - BRACCIO = 48,80 m

