



500 SERIES MODEL 5299A CRAWLER CRANE WITH 46HR BOOM

RATINGS IN POUNDS

With 46HR Angle Chord Lattice Boom and "S-S" Counterweight (34,500 Lbs.)

Boom Length	Radius In Feet	Boom Angle Degrees	Lift Ratings	Ft. From Boom Point
40 feet	10	80.9	120000	45
	12	77.9	100000	44
	15	73.5	80000	44
	20	65.9	51710	42
	25	57.7	37730	39
	30	48.8	29500	35
	35	38.4	24100	30
40	24.6	20290	22	
50 feet	12	80.4	99930	54
	15	76.9	79950	54
	20	70.9	51580	52
	25	64.7	37590	50
	30	58.2	29340	48
	35	51.2	23920	44
	40	43.4	20120	39
50	22.0	15050	24	
60 feet	14	80.1	85620	64
	15	79.1	79890	64
	20	74.2	51450	63
	25	69.1	37450	61
	30	63.9	29200	59
	35	58.5	23760	56
	40	52.7	19970	53
50	39.4	14900	43	
60	20.1	11690	26	
70 feet	15	80.7	79830	74
	20	76.5	51270	73
	25	72.2	37270	72
	30	67.9	28990	70
	35	63.4	23550	68
	40	58.7	19790	65
	50	48.5	14700	58
60	36.4	11480	47	
70	18.6	9270	27	
80 feet	17	80.4	65660	84
	20	78.2	51140	83
	25	74.5	37140	82
	30	70.8	28850	81
	35	66.9	23410	79
	40	63.0	19650	76
	50	54.6	14560	70
60	45.2	11340	62	
70	34.0	9130	50	
80	17.4	7520	29	
90 feet	18	80.8	59850	94
	20	79.5	50960	94
	25	76.3	36940	93
	30	73.0	28650	91
	35	69.6	23200	90
	40	66.2	19450	87
	50	59.0	14350	82
60	51.2	11130	75	
70	42.5	8920	66	
80	32.0	7300	53	
90	16.4	6080	31	
100 feet	20	80.6	50780	104
	25	77.7	36760	103
	30	74.7	28450	102
	35	71.7	23000	100
	40	68.7	19270	98
	50	62.4	14160	94
	60	55.7	10930	88
70	48.4	8720	80	
80	40.2	7100	70	
90	30.3	5870	56	
100	15.5	4900	32	
110 feet	21	80.9	47000	114
	25	78.8	36560	113
	30	76.1	28250	112
	35	73.4	22780	111
	40	70.7	19050	109
	50	65.1	13940	105
	60	59.2	10720	100
70	52.9	8500	93	

Boom Length	Radius In Feet	Boom Angle Degrees	Lift Ratings	Ft. From Boom Point
110 feet (cont.)	80	46.0	6870	84
	90	38.3	5640	73
	100	28.8	4680	58
	110	14.8	3900	33
120 feet	23	80.7	41070	124
	25	79.8	36390	123
	30	77.3	28080	122
	35	74.9	22600	121
	40	72.4	18890	120
	50	67.3	13760	116
	60	62.0	10540	111
	70	56.4	8320	105
	80	50.5	6690	98
	90	44.0	5460	88
	100	36.6	4490	77
	110	27.6	3710	61
120	14.2	3080	35	
130 feet	24	81.0	38410	134
	25	80.6	36190	133
	30	78.3	27870	132
	35	76.0	22550	131
	40	73.8	18670	130
	50	69.1	13560	127
	60	64.3	10330	122
	70	59.3	8090	117
	80	54.0	6470	110
	90	48.4	5230	102
	100	42.2	4260	92
	110	35.1	3480	80
120	26.5	2840	63	
130	13.6	2320	36	
140 feet	26	80.8	34010	143
	30	79.1	27660	143
	35	77.1	22360	142
	40	74.9	18480	140
	50	70.7	13350	137
	60	66.3	10110	133
	70	61.7	7890	128
	80	56.9	6260	122
	90	51.9	5030	115
	100	46.5	4050	107
	110	40.6	3260	96
	120	33.8	2620	83
130	25.5	2090	65	
140	13.1	1650	37	
150 feet	28	80.7	30340	153
	30	79.9	27450	153
	35	77.9	22150	152
	40	76.0	18270	151
	50	72.0	13130	148
	60	67.9	9890	144
	70	63.8	7660	140
	80	59.4	6030	134
	90	54.9	4790	128
	100	50.0	3820	120
	110	44.8	3030	111
	120	39.1	2390	100
130	32.6	1850	86	
140	24.6	1400	68	
150	12.7	1030	38	
160 feet	29	80.9	28640	163
	30	80.5	27260	163
	35	78.7	21980	162
	40	76.9	18090	161
	50	73.2	12940	158
	60	69.4	9700	155
	70	65.5	7470	151
	80	61.5	5840	146
	90	57.3	4600	140
	100	53.0	3620	133
	110	48.3	2830	125
	120	43.4	2190	115
130	37.8	1650	103	
140	31.6	1190	89	

5299A.15

FORM NO. 5299A-CR-2

RATINGS IN KILOGRAMS

With 46HR Angle Chord Lattice Boom and "S-S" Counterweight (15648 Kgs.)

Boom Length	Radius In Meters	Boom Angle Degrees	Lift Ratings	Meters From Boom Point
12.19 meters	3.1	80.6	54430	13.6
	3.5	78.7	47400	13.5
	4.0	76.3	41460	13.4
	4.5	73.9	36860	13.3
	5.0	71.4		13.1
	6.0	66.4		12.7
	8.0	55.6		11.6
	10.0	43.2		9.9
12.0	26.7		7.1	
15.24 meters	3.5	81.0	47360	16.6
	4.0	79.1	41430	16.5
	4.5	77.2	36840	16.4
	5.0	75.2		16.3
	6.0	71.3		16.0
	7.0	67.3		15.6
	8.0	63.1		15.2
	10.0	54.3		13.9
12.0	44.4		12.2	
14.0	32.2		9.7	
15.0	24.3		7.8	
18.29 meters	4.0	80.9	41400	19.6
	4.5	79.3	36810	19.5
	5.0	77.7		19.4
	6.0	74.5		19.2
	7.0	71.2		18.9
	8.0	67.9		18.5
	10.0	60.9		17.6
	12.0	53.5		16.3
14.0	45.2		14.5	
16.0	35.5		12.2	
18.0	22.6		8.6	
21.34 meters	4.5	80.9	36790	22.6
	5.0	79.5		22.5
	6.0	76.8		22.3
	7.0	74.0		22.1
	8.0	71.2		21.8
	9.0	68.3		21.4
	10.0	65.4		21.0
	12.0	59.3		19.9
14.0	52.8		18.6	
16.0	45.7		16.9	
18.0	37.7		14.6	
20.0	27.7		11.5	
24.38 meters	5.0	80.8	31480	25.6
	5.5	79.6	27120	25.6
	6.0	78.4	23750	25.5
	7.0	76.0	18990	25.2
	8.0	73.6	15730	25.0
	9.0	71.1	13370	24.6
	10.0	68.6	11580	24.3
	12.0	63.5	9100	23.4
14.0	58.1	7400	22.3	
16.0	52.4	6170	20.9	
18.0	46.2	5250	19.2	
20.0	39.2	4540	17.0	
22.0	31.1	3950	14.1	
24.0	20.2	3490	10.0	
27.43 meters	5.5	80.8	27040	28.6
	6.0	79.7	23660	28.6
	7.0	77.6	18910	28.4
	8.0	75.5	15640	28.1
	9.0	73.3	13280	27.8
	10.0	71.1	11490	27.5
	12.0	66.6	9010	26.7
	14.0	62.0	7310	25.8
16.0	57.1	6080	24.6	
18.0	52.0	5160	23.2	
20.0	46.5	4440	21.5	
22.0	40.4	3860	19.3	
24.0	33.4	3390	16.7	
26.0	24.9	2990	13.1	
30.48 meters	5.9	81.0	24190	31.7
	6.0	80.8	23590	31.7
	7.0	78.9	18830	31.5
	8.0	76.9	15560	31.3
	9.0	75.0	13190	31.0
	10.0	73.0	11400	30.7
	12.0	69.1	8930	30.0
	14.0	65.0	7220	29.2
16.0	60.8	6000	28.2	
18.0	56.3	5070	26.9	
20.0	51.7	4350	25.5	
22.0	46.7	3770	23.8	
24.0	41.3	3300	21.7	
26.0	35.3	2900	19.2	
30.0	18.6	2290	11.3	

Boom Length	Radius In Meters	Boom Angle Degrees	Lift Ratings	Meters From Boom Point
33.53 meters	6.4	80.9	21320	34.7
	7.0	79.9	18740	34.6
	8.0	78.1	15460	34.4
	9.0	76.4	13100	34.2
	10.0	74.6	11300	33.9
	12.0	71.0	8830	33.3
	14.0	67.4	7130	32.5
	16.0	63.6	5890	31.6
	18.0	59.8	4970	30.5
	20.0	55.7	4250	29.3
	22.0	51.5	3670	27.8
	24.0	46.9	3190	26.1
	26.0	42.1	2800	24.0
	28.0	36.7	2460	21.6
32.0	22.9	1930	14.6	
36.58 meters	6.9	80.9	19060	37.7
	7.0	80.7	18670	37.7
	8.0	79.1	15390	37.5
	9.0	77.5	13020	37.3
	10.0	75.9	11220	37.0
	12.0	72.7	8750	36.5
	14.0	69.4	7040	35.8
	16.0	66.0	5820	35.0
	18.0	62.5	4890	34.0
	20.0	58.9	4170	32.9
	22.0	55.2	3590	31.6
	24.0	51.3	3110	30.1
	26.0	47.1	2720	28.4
	28.0	42.7	2380	26.4
32.0	32.4	1850	21.2	
36.0	17.5	1440	12.5	
39.62 meters	7.4	80.9	17130	40.7
	8.0	80.0	15300	40.6
	9.0	78.5	12920	40.4
	10.0	77.0	11130	40.2
	12.0	74.0	8660	39.7
	14.0	71.0	6950	39.0
	16.0	67.9	5720	38.3
	18.0	64.8	4790	37.4
	20.0	61.5	4070	36.4
	22.0	58.2	3490	35.2
	24.0	54.7	3010	33.9
	26.0	51.1	2620	32.4
	30.0	43.2	1990	28.7
	34.0	33.9	1520	23.7
38.0	21.4	1170	16.0	
42.67 meters	7.8	81.0	15780	43.7
	8.0	80.7	15210	43.7
	9.0	79.3	12830	43.5
	10.0	78.0	11030	43.3
	12.0	75.2	8570	42.8
	14.0	72.4	6860	42.2
	16.0	69.6	5630	41.6
	18.0	66.7	4700	40.8
	20.0	63.7	3970	39.8
	22.0	60.7	3390	38.8
	24.0	57.6	2920	37.6
	26.0	54.3	2520	36.2
	30.0	47.4	1900	33.0
	34.0	39.6	1430	28.8
38.0	30.2	1070	23.0	
42.0	16.0	780	13.8	
45.72 meters	8.3	81.0	14320	46.7
	9.0	80.1	12730	46.6
	10.0	78.8	10930	46.4
	12.0	76.2	8480	46.0
	14.0	73.6	6760	45.4
	16.0	71.0	5520	44.8
	18.0	68.3	4590	44.1
	20.0	65.6	3870	43.2
	22.0	62.8	3290	42.2
	24.0	60.0	2820	41.1
	26.0	57.0	2410	39.9
	28.0	54.0	2080	38.5
	32.0	47.5	1540	35.3
	36.0	40.3	1120	31.1
40.0	31.7	810	25.6	
44.0	20.3	550	17.4	

5299A.15M

CRANE RATING DATA

Load ratings are in pounds (kilograms) with crawler side frames extended and do not exceed 75% of the load which would cause tipping with crane standing level on firm uniformly supporting surface. Clamshell, dragline, and magnet ratings are in accordance with recommended industry standards and should not exceed the rating shown. Safe loads depend on ground conditions, boom length, radius of operation and proper handling, all of which must be taken into consideration by user. Blocks, slings, buckets, and other load carrying devices are considered part of the load. Retractable A-frame must be fully raised position for all ratings. Ratings with side frames retracted are available on request.

Lifting is approved only in those areas for which ratings are shown in the rating chart. Ratings in shaded areas are based on structural limitations rather than stability.

"Radius in feet (meters)" is the horizontal distance at crane base level from center pin to a vertical line through the center of gravity of the suspended load.

Main load line is 7/8 inch (22.2 mm) diameter EIPS with minimum breaking strength of 79,600 lb. (36106 Kg.).

Boom suspension line is 5/8 inch (15.9 mm) diameter with minimum breaking strength of 41,200 lb. (18690 Kg.). Boom suspension pendants are 1 1/8 inch (28.6 mm) diameter with minimum breaking strength of 140,600 lb. (63780 Kg.).

Maximum boom length is 160 ft. (48.8 m) for lift service, 110 ft. (33.5 m) for clamshell, and 70 ft. (21.3 m) for dragline or magnet. Boom lengths and ratings are available in 10 ft. (3.05 m) increments.

Designed and rated to comply with ANSI Code B30.5.

LOAD HOISTING DATA

Maximum Lifting Capacity In Pounds	Minimum Parts of Load Line	Maximum Hoisting Distance		
		RH Drum With Controlled Load Lowering	LH Drum With Indep. Controlled Load Lowering	LH Drum Without Controlled Load Lowering
120,000	6	85 ft.	50 ft.	65 ft.
113,710	5	102 ft.	60 ft.	78 ft.
90,970	4	128 ft.	75 ft.	98 ft.
68,220	3	171 ft.	101 ft.	131 ft.
45,480	2	256 ft.	151 ft.	196 ft.
22,740	1	512 ft.	303 ft.	392 ft.

Based on 7/8" EIPS Rope

46HR BOOM COMPOSITION

Boom Length		20 Ft. (6.1 m)	10 Ft. (3.0 m)	20 Ft. (6.1 m)	40 Ft. (12.2 m)	20 Ft. (6.1 m)
(Feet)	(Meters)	46HR Inner	46HR Center	46HR Center	46HR Center	46HR Outer
40	12.2	1	—	—	—	1
50	15.3	1	1	—	—	1
60	18.3	1	—	1	—	1
70	21.3	1	1	1	—	1
80	24.4	1	—	—	1	1
90	27.4	1	1	—	1	1
100	30.5	1	—	1	1	1
110	33.5	1	1	1	1	1
120	36.6	1	—	—	2	1
130	39.6	1	1	—	2	1
140	42.7	1	—	1	2	1
150	45.7	1	1	1	2	1
160	48.8	1	—	—	3	1

BOOM AND JIB ERECTION*

METRIC

46HR Boom Length In Feet	Maximum No. 9 Jib Length In Feet
160'	20'
150'	40'

46HR Boom Length In Meters	Maximum No. 9 Jib Length In Meters
48.8 m	6.1 m
45.7 m	12.2 m

*Self-erection is over the idler end of the crawlers with A-frame fully raised and tumblers blocked.

WEIGHTS

	Lbs.	Kgs.
5299A Crane with 40 ft. (12.2 m) boom	104,200	47265
Counterweight	34,500	15649
Boom Outer	2,425	1100
Boom Inner	1,820	826
Side Frames with 32" (812.8 mm) shoes (2)	20,300	9208
Crawler Axles (2)	4,800	2177
Axle extensions and torque tubes	1,500	680
50 ton (45.5 mt) crane block	1,200	544

GROUND PRESSURE:

Crane w/40' (12.2 m) boom 36 (914 mm)
7.65 PSI (5378 Kg/M²)

PERFORMANCE

Travel Speed1.0 MPH 1.61 KmPH
Gradeability.....30%
Swing Speed3.5 R.P.M. Max.

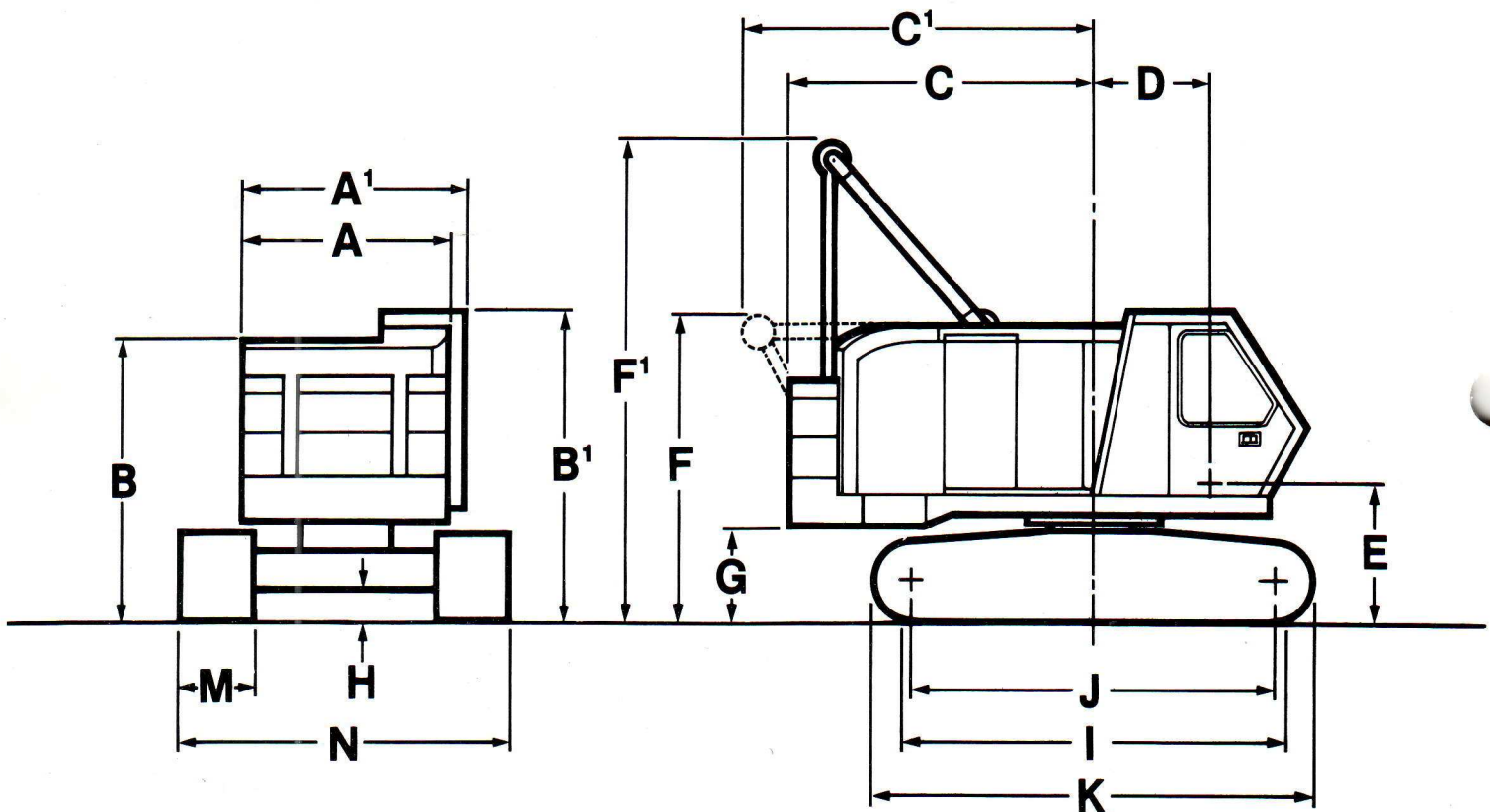
NOTE: In accordance with varying material situations and the Company's policy of constant product improvement these specifications subject to change without notice and without incurring responsibility to units previously sold.

HOISTING PERFORMANCE:

Function	SLP (Pounds) At SLS (Feet per Minute)		SLP (Kilograms) At SLS (Meters per Minute)	
	First Layer	Sixth Layer	First Layer	Sixth Layer
Lifting Crane	5,000 Lbs. @ 331 FPM	5,000 Lbs. @ 443 FPM	2268 Kgs. @ 101 MPM	2268 Kgs. @ 135 MPM
	10,000 Lbs. @ 286 FPM	10,000 Lbs. @ 352 FPM	4536 Kgs. @ 87 MPM	4536 Kgs. @ 107 MPM
	15,000 Lbs. @ 240 FPM	15,000 Lbs. @ 245 FPM	6804 Kgs. @ 73 MPM	6804 Kgs. @ 75 MPM
	20,000 Lbs. @ 183 FPM	20,000 Lbs. @ 173 FPM	9072 Kgs. @ 56 MPM	9072 Kgs. @ 53 MPM
	22,700 Lbs. @ 161 FPM	22,700 Lbs. @ 148 FPM	10,297 Kgs. @ 49 MPM	10,297 Kgs. @ 45 MPM

Performance figures are based on machine equipped with standard engine and torque converter.

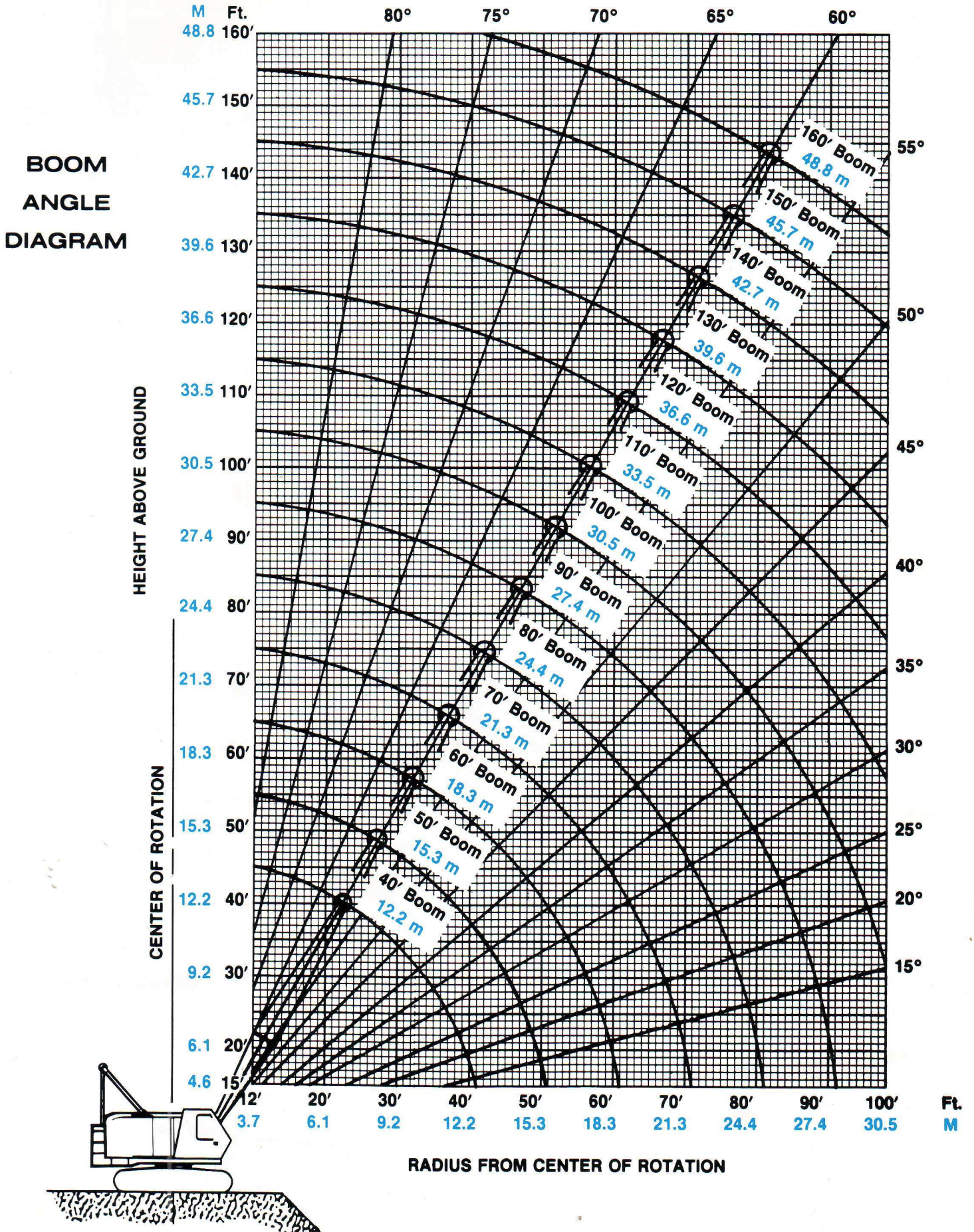
MODEL 5299A CRAWLER CRANE



GENERAL DIMENSIONS

	Ft.	MM		Ft.	MM
A. Width of Machinery Cab	9'0"	2743	G. Ground to bottom of counterweight	3'3¼"	997
A ₁ . Width over Operator's Cab	10'0"	3048	H. Minimum clearance under base	1'2¼"	362
B. Height over Machinery Cab	10'8¾"	3273	I. Crawler bearing length	15'10"	4826
B ₁ . Height over Operator's Cab	10'11"	3327	J. Center to center crawler tumbler	14'11"	4546
C. Tailswing	12'1"	3683	K. Overall length of crawlers	17'6"	5334
C ₁ . Tailswing with A-frame lowered	13'8½"	4178	M. Tread width	36"	914
D. Center of pivot to center crane boom foot	3'7¾"	1111	N. Overall width over crawlers (Extended)		
E. Ground to center crane boom foot	5'1¾"	1568	36" (914 mm) Shoes	14'2"	4318
F. Height over retractable A-frame (Retracted)	11'3¼"	3435	Overall width over crawlers (Retracted)		
F ₁ . Height over retractable A-frame (Raised)	17'10½"	5448	36" (914 mm) Shoes	11'4"	3454

AMERICAN MODEL 5299A WORKING RANGES



Your AMERICAN distributor is with you...all the way.

Service is his middle name. He knows AMERICAN equipment inside and out...what it will do...the options available. This can help you match your equipment to your needs, and that's important.

After the purchase, he has a strong stake in keeping your AMERICAN on the job. So he maintains an inventory of genuine AMERICAN replacement parts... plus the right shop facilities and trained mechanics for speedy maintenance or repair.

Closely supporting him is the AMERICAN district representative in your area, plus a team of home-office specialists...in application engineering, sales, and service. All are deeply committed to one goal — serving you.

That's the AMERICAN way.



3JR891

FORM NO. 5299A-CR-2

PRINTED IN U.S.A.

SOLD & SERVICED BY:



The American Crane Corporation
202 Raleigh Street
Wilmington, North Carolina 28403
AN EQUAL OPPORTUNITY EMPLOYER

A. D. MOODY & SON, INC.
POST OFFICE BOX 5350
4652 PHILLIPS HWY.
JACKSONVILLE, FLORIDA 32207
(904) 737-4401