

new

The 4004EH Series with NexStar™



You've asked for it, and now Auto Crane® has equipped our 4004EH series service cranes with a new extension of our original NexStar™ crane control management system—the first truly proportional truck-mounted crane control technology.

Auto Crane's 4004EH (electric-hydraulic) series with NexStar is engineered specifically for lighter duty mechanics trucks, with all the safety features and performance you'd expect.

NexStar is advanced control technology that enables operators to control multiple functions simultaneously and proportionally—fully independent of each other. With an eight-button remote control, operators have the ability to proportionally operate the crane with 100 percent power at four speed settings. Comprised of a transmitter, receiver and valve bank, NexStar puts ultimate crane control in the palm of your hand.

Available in either tethered remote or our fully featured wireless FM models, NexStar-equipped cranes by Auto Crane are engineered for the way you work.



**AUTO
CRANE®**

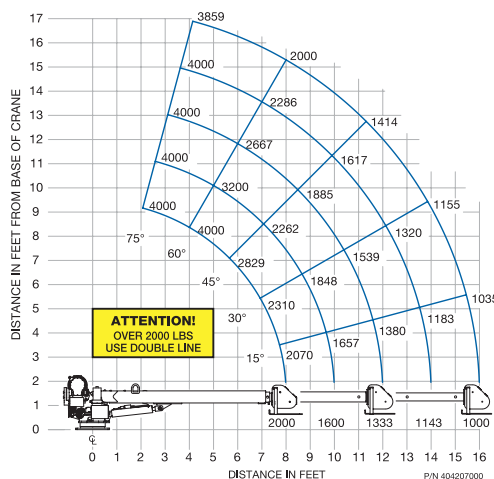
**Engineered First.
Engineered to Last.**

MADE IN THE USA

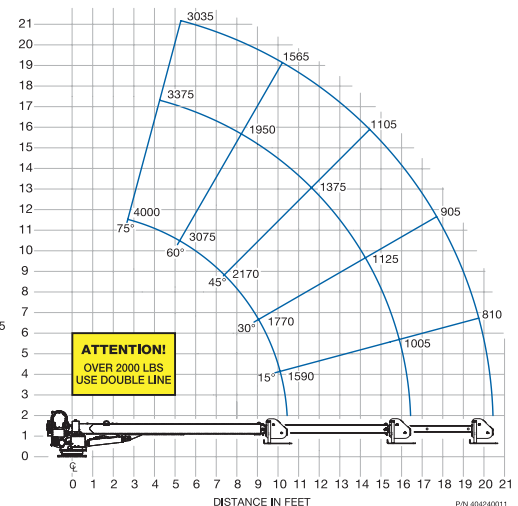
Features and Benefits

- **Equipped with NexStar**
 - Proportional control of multiple functions simultaneously
- **Single-hand operation**
 - A two-man task can be done by a single person
- **Continuous power rotation**
 - 360° movement to quickly position the load
- **80 ft. of 5/16" 9,800 lbs. single line break strength cable**
 - Exceeds standard safety requirements
- **-5° to 75° boom elevation**
 - Greater work area capability with maximum range of working angle limits
- **Tethered or fully featured wireless remote options**
 - Your choice for preferred control method
- **2 year factory warranty**
 - Peace of mind

4004EH - 16' Boom



4004EH - 20' Boom



Note: Weight of load handling devices are part of the load and must be deducted from the capacity.

new

The 4004EH Series with NexStar™



FM Models

- Proportional control
- 8 button transmitter
- LCD diagnostics screen on receiver
- Boom-mounted crane status light
- Level sensors for crane load management



Tethered Models

- Proportional control
- 8 button transmitter
- LED diagnostics panel on receiver

AUTO CRANE®
Engineered First.
Engineered to Last.

MADE IN THE USA

NexStar-equipped cranes by Auto Crane® are the only cranes in their class with load monitoring and load limiting controls, and a visual signal—vital capabilities when safety is paramount. What's more, NexStar is the first truly proportional truck-mounted crane control for the Auto Crane EH series.

Components

- **The Transmitter** is designed for single-hand operation and offers a 70% weight reduction. A 100% proportional push button control provides multiple speed operations on boom up/down, hoist and rotate functions independently.
- **The Receiver** manages the output to the hydraulic valve bank and features a diagnostics display that provides a series of readouts monitoring the overall operation of the crane and percentage of load.
- **The Valve Bank** works in conjunction with the other components to support the total proportional control and individual crane functions.

On board emergency stop for safer operation



Transmitter status lights

Keyboard eliminates the bulky trigger/toggle switch operation enabling single-hand operation

Hoist, Boom Up and Down, and Rotate functions are proportional at 100% power with four different speed settings for better load control

The transmitter is IP66 rated and CE certified for European applications

Estimated 100 hours of crane operation time on just two AA batteries

Available in either tethered or wireless remote control

Auto Crane® is a brand of Auto Crane Company, a wholly owned subsidiary of Ramsey Industries, Inc.

Engineered to be the best, Auto Crane is committed to the ongoing improvement of its products. Auto Crane reserves the right to make changes to our products without notice.

© 2013. All rights reserved.
4004EH_07/13_38722

Courtesy of Crane.Market