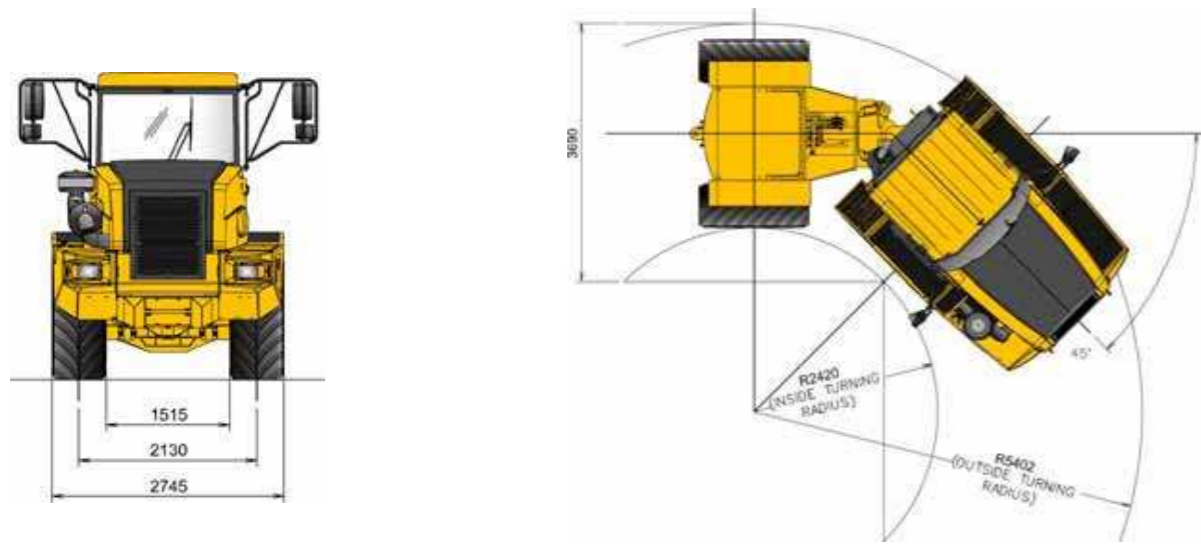


2306D ARTICULATED TRACTOR 4X4 MKVI



2306D ARTICULATED TRACTOR 4X4 MKVI



Features of Articulated Tractors...

- **VALUE:** Bell tractors are not farm tractor derivatives. They are built from the ground up for trouble free operation and maximum durability in full-time heavy duty construction work.
- **PRODUCTIVE:** Powerful built-for hauling ADT drivetrains are well matched for pulling and retarding heavy loads. Nitrogen over oil strut suspension smooths the ride for operator and machine.
- **ECONOMY:** Modern fuel efficient engine, lockup torque converter and planetary transmission deliver more work per unit of fuel used
- **EASY TO OPERATE:** High quality cab is conducive to operator care. Simple to use controls and electronic interfaces protect the machine from accidental misuse.

BELL SOUTH AFRICA : Tel: +27 (0)11-928 9700 • Fax: +27 (0)11-928 9702
 BELL INTERNATIONAL : Tel: +27 (0)35-907 9431 • Fax: +27 (0)35-797 4336
 E-mail: sales@bellequipment.com • www.bellequipment.com

All dimensions are shown in millimetres, unless otherwise stated between brackets. Under our policy of continuous improvement, we reserve the right to change specifications and design without prior notice. Photographs featured in this brochure may include optional equipment.

Strong Reliable Machines
Strong Reliable Support **BELL**

SPEC/766/05/09 - 2306D Articulated Tractor MKVI

- Gross Power : 170 kW (228 hp)
- Gross Torque : 810 kg (596 lbs)
- Gross Weight : 45 300 kg (99,869 lbs)

BELL

2306D 4X4 MKVI

ENGINE

Mercedes Benz OM906LA
 Configuration I-6 with exhaust brake and Engine Valve Brake (EVB)
 Aspiration Turbocharged and intercooled
 Cooling System Liquid cooled with single pass radiator as well as charge air cooler
 Gross power 170 kW (228 hp) @ 2 200 rpm SAE J1349
 Net Power 163 kW (219 hp) @ 2 200 rpm
 Gross torque 810 Nm (596 lbf) @ 1 200 - 1 600 rpm SAE J1349
 Net Torque 780 Nm (574 lbf) @ 1 200 - 1 600 rpm
 Displacement 6,37 litres (389 cu.in)
 Fuel tank capacity 198,5 litres (52.4 US gal)

TRANSMISSION

ZF 6HP592C with integral retarder
 Engine mounted box with rear output
 Gear layout Constant meshing planetary gears, clutch operated
 Gears 6 Forward, 1 Reverse
 Clutch type Hydraulically operated multi-disc
 Control type Electronic
 Torque converter layout Hydrodynamic, with lock-up in all gears

Vehicle speeds
 1st 2nd 3rd 4th 5th 6th R
 7.2 11.8 20.1 28.4 40.3 48.6 8.3 km/h
 4.5 7.3 12.5 17.6 25 30.2 5.2 mph

TRANSFER CASE

VGR 13 200
 Output differential Three in-line helical gears. Interaxle 50/50 proportional differential, pneumatically lockable whilst stationary or on the move.

AXLES

Bell 14T
 Differential type Spiral bevel type with Limited Slip

Final drive type Outboard heavy duty planetary

Housing type Steel fabricated

BRAKING SYSTEM

SERVICE BRAKE Dual circuit, full hydraulic actuation caliper brakes on all wheels
 Maximum brake force 125,62 kN (28,241 lbf)

PARK & EMERGENCY Spring applied, air released driveline-mounted disc.
 Maximum brake force 368,42 kN (82,824 lbf)

AUXILIARY BRAKE Automatic exhaust brake and Engine Valve Brake (EVB)

WHEELS

Standard Tyre Size 23.5X25
 Type SRG
 Optional Tyre Size 620/75R26; Dual 15X34
 Type Traction

SUSPENSION

Front type Semi-independent leading arm type linkages supported by nitrogen/oil struts
 Rear type Rigidly mounted

HYDRAULIC SYSTEM

Full load sensing system serving the prioritized steering, body tipping and brake functions. A ground-driven, load sensing emergency steering pump is integrated into the main system
 Pump Type Variable displacement, load sensing piston
 Application Steering, hydraulic brake charging
 Flow: 84 l/min (48.6 US gal/min)
 Pressure: 25 MPa (3,625 psi)
 Filter: 10 micron

PNEUMATIC SYSTEM

Air drier with heater and integral unloader valve, serving park brake and auxiliary functions
 System pressure 810 kPa (117 psi)

ELECTRICAL SYSTEM

Voltage 24 V
 Battery type Two maintenance free permanently sealed
 Battery capacity 2 x 105 Ah (optional 2 extra batteries)
 Alternator rating 28 V 80 A

STEERING SYSTEM

Hydrostatically actuated by two double acting cylinders, with ground-driven emergency steering pump.
 Angle +/- 45 degrees
 Lock to lock turns 4,1

OPERATING WEIGHTS

Empty: Front 7 970 kg (17 571 lbs)
 Rear 4 710 kg (10 384 lbs)
 Total 12 680 kg (27 955 lbs)

Laden: Front 8 200 kg (18 078 lbs)
 Rear 8 830 kg (19 467 lbs)

Gross Vehicle Mass 17 030 kg (37 545 lbs)
 Gross Combined Mass 56 000 kg (123 459 lbs)

STANDARD EQUIPMENT

ROPS/FOPS certification
 Cab
 • Protective rear window guard • Tilt cab for service access • Gas strut supported door
 • Tinted safety glass • Sliding windows • Rear view mirrors - regular and wide angle • Sun visor
 • Wiper/washer with intermittent control • Tilt and telescoping steering wheel • Adjustable, air suspension seat with retractable seat belt
 • Fold-away trainer seat with retractable seat belt
 • HVAC climate control system with filtered and ducted air • Rotating beacon • 12 V power outlet/12 V cigarette lighter • Ash tray • Drinks holder
 • Cooled/heated lunch box • Sound insulated to 76 dB(A) to ISO 6396 • Radio/CD • Memory Module
 • Fleetmatic Satellite Monitoring System

MDU Features

• Operator / Site selected speed control
 • Tipping counter • Trip timer • Trip distance
 • Transmission gear selection • Fuel Consumption
 • Diagnostics • Intermittent wiper timing control
 • Speedo calibration for alternative tyre sizes
 • Metric /Imperial unit selection • Warning lights with audible buzzer

Gauges

• Engine coolant temperature • Engine oil pressure • Transmission oil temperature
 • Fuel • Tachometer • Battery voltage
 • Hourmeter • Odometer • System air pressure

Retarder

Integral transmission retarder with 6 settings

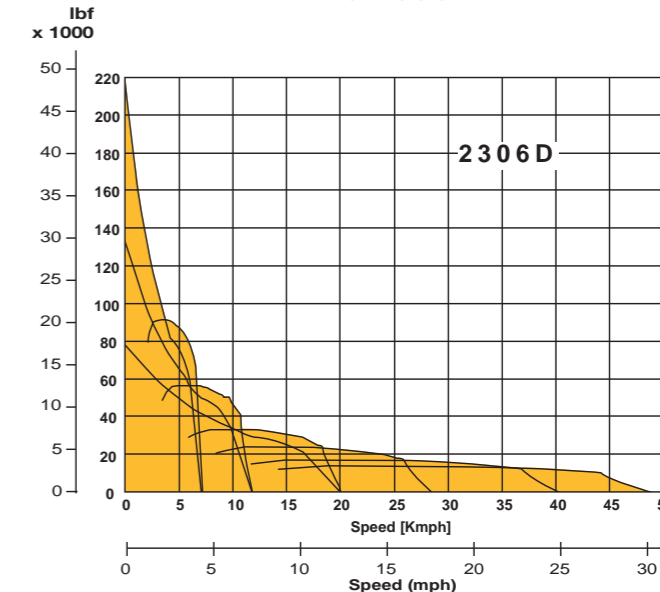
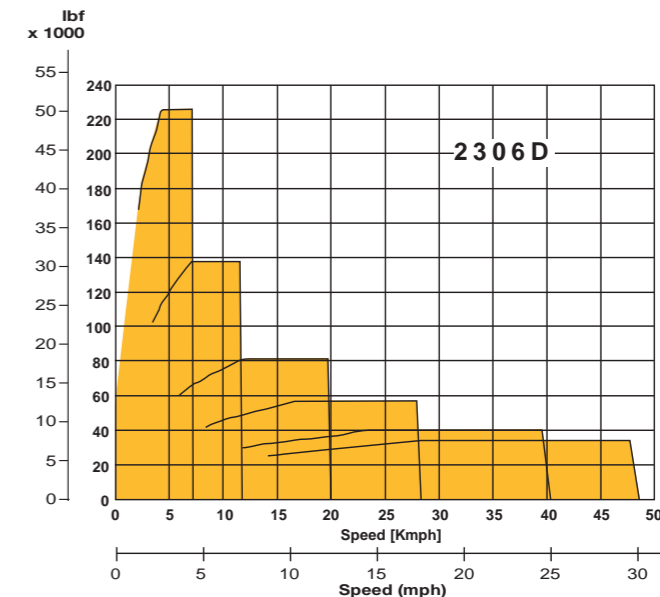
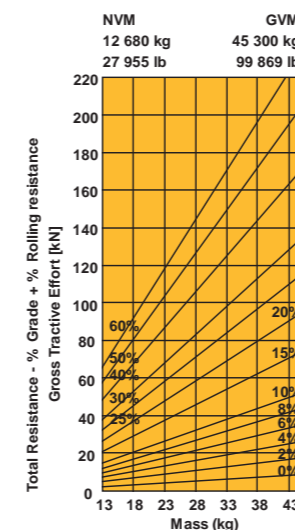
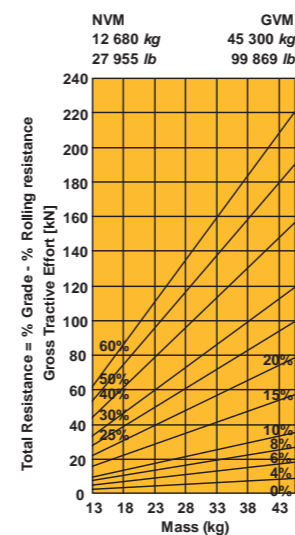
Other

Ground driven emergency steering
 Articulation lock

OPTIONAL EQUIPMENT

(Factory or field installed)
 • On Board Weigh System (OBW)
 • Electrically adjustable rearview mirrors - one per side
 • Retractable sun visor
 • Forward working lights
 • Artic reverse light
 • Fuel heater
 • External windshield visor
 • Headlight protection grills
 • Rear window wiper
 • Antenna mounting bracket
 • System for reverse camera
 • Wiggins quick fuelling system
 • Tyre pressure monitoring
 • Fleetmatic production packages

DRAWBAR PULL GRAPH



LINE DRAWING

