

4206D CONSTRUCTION SCRAPER TRACTOR 4X4 MKVI



What makes the 4206D the Ultimate Scraper Tractor...

- True construction machine heritage.
- Heavy duty drivetrain, transmission and axles designed for 60 ton + gross weight application.
- Supreme driver comfort from a nitrogen over oil strut semi independent suspension system.
- Programmable Hydraulic Control System permitting fine tuning of the Scraper controls.
- Torque converter drive with lock up clutch provides torque multiplication while reducing drivetrain shock loads.
- Lock up clutch provides direct drive economy.

BELL SOUTH AFRICA : Tel: +27 (0)11-928 9700 • Fax: +27 (0)11-928 9702
BELL INTERNATIONAL : Tel: +27 (0)35-907 9431 • Fax: +27 (0)35-797 4336
E-mail: sales@bellequipment.com • www.bellequipment.com

All dimensions are shown in millimetres, unless otherwise stated between brackets.
Under our policy of continuous improvement, we reserve the right to change specifications and design without prior notice. Photographs featured in this brochure may include optional equipment.

Strong Reliable Machines
Strong Reliable Support **BELL**

SPEC/765/05/09 - 4206D Articulated Tractor MKVI

4206D CONSTRUCTION SCRAPER TRACTOR 4X4 MKVI



- Gross Power : 205 kW (275 hp)
- Gross Torque : 1 000 Nm (736 lbft)
- Gross Weight : 12 120 kg (26,712 lbs)

BELL

4206D

CONSTRUCTION SCRAPER TRACTOR
4X4 MKVI

ENGINE Mercedes Benz OM501LA
 Configuration V-6
 Aspiration Turbocharged and intercooled
 Cooling System Liquid cooled with single pass radiator as well as charge air cooler
 Gross power 315 kW (422 hp) @ 1 800 rpm SAE J1349
 Net Power 308 kW (413 hp) @ 1 800 rpm
 Gross torque 2 000 Nm (1,473 lbft) @ 1 080 rpm SAE J1349
 Net Torque 1 974 Nm (1,453 lbft) @ 1 080 rpm
 Displacement 11,95 litres (730 cu.in)
 Fuel tank capacity 485 l (128 US gal)

TRANSMISSION Allison HD 4060
 Layout Engine mounted box with rear output
 Gear layout Constant meshing planetary gears, clutch operated
 Gears 6 Forward, 1 Reverse
 Clutch type Hydraulically operated multi-disc
 Control type Electronic
 Torque converter layout Hydrodynamic, with lock-up in all gears
 Vehicle speeds

	1st	2nd	3rd	4th	5th	6th	R
km/h	7,6	14,0	18,7	26,7	36,2	39,0	5,6
mph	4,7	8,7	11,6	16,6	22,5	24,2	3,5

TRANSFER CASE VGR 17000
 Layout Three in-line helical gears
 Output differential Interaxle differential, pneumatically lockable whilst stationary or on the move.

AXLES
 Differential type Bell 25 tonne
 Final drive type Spiral bevel type with Controlled Traction Differentials (CTD)
 Housing type Outboard heavy duty planetary
 Steel fabricated

BRAKING SYSTEM
SERVICE BRAKE Dual circuit, full hydraulic actuation ventilated dry disc brakes
 Maximum brake force 134 kN (30,124 lbf)

PARK & EMERGENCY
 Maximum brake force Spring applied, air released driveline-mounted disc.
 440 kN (98,920 lbf)
 Auxilliary Brake Automatic exhaust brake and Engine Valve Brake (EVB)

WHEELS
 Tyre Size 875/65R29
 Type Radial Earthmover

SUSPENSION
 Front type Semi-independent leading A-frame supported by nitrogen/oil struts
 Rear type Solid mounted

HYDRAULIC SYSTEM
 Full load sensing system serving the prioritized steering, scraper and brake functions. A ground-driven, load sensing emergency steering pump is integrated into the main system
 Pump Type Variable displacement, loadsensing piston
 Application Steering, scraper operation, hydraulic brake charging and cooling fan drive
 Flow: 300 l/min (79.26 US gal/min)
 Pressure: 20 MPa (2,900 psi)
 Filter: 10 micron

HYDRAULIC SYSTEM (continued)
 Scraper Configurations 2 Scrapers: 3 controls per scraper
 3 Scrapers: 2 controls per scraper

Hydraulic Control Valve - Scrapers The Control Valve is a stackable multi-section, load sensing, pressure compensated, proportional directional valve with port relief valves in the down ports. The valve consists of 6 sections. Coupling is done via 12 female quick couplers situated on the rear of the machine.

Electro Hydr. controls - Scrapers Parker Hydraulics IQAN System. Fully programmable. Hydraulic Flow Rates can be adjusted on Display Module.

PNEUMATIC SYSTEM Air drier with heater and integral unloader valve, serving park brake and auxiliary functions
 System pressure 810 kPa (117 psi)

ELECTRICAL SYSTEM
 Voltage 24 V
 Battery type Two maintenance free permanently sealed
 Battery capacity 2 x 105 Ah (optional 2 extra batteries)
 Alternator rating 28 V 100 A

STEERING SYSTEM Hydrostatically actuated by two double acting cylinders, with ground-driven emergency steering pump.
 Angle +- 42 degrees
 Lock to lock turns 4,7

OPERATING WEIGHTS
 Front 14 540 kg (32,055 lbs)
 Rear 7 600 kg (16,755 lbs)
 Gross Weight 22 140 kg (48,810 lbs)
 GCM 65 850 kg (145,175 lbs)

STANDARD EQUIPMENT Cab ROPS/FOPS certification
 • Handrails on fenders • Tilt cab for service access • Gas strut supported door • Tinted safety glass • Sliding windows • Rearview mirrors- regular and wide angle • Sun visor
 • Wiper/washer with intermittent control
 • Rear window wiper/washer • Tilt and telescoping steering wheel
 • Adjustable, air suspension seat with retractable seat belt, rotated by 15 degrees • HVAC climate control system with filtered and ducted air • Air horn
 • Electrical relays and circuit breakers
 • Ashtray • Drinks holder
 • Cooled/heated lunchbox • Wheel spanner set

MDU Features • Trip timer • Trip distance • Diagnostics • Intermittent wiper timing control • Speedo calibration for alternative tyre sizes
 • Metric /Imperial unit selection
 • Warning lights with audible buzzer
 Tow recovery cable

4206D

CONSTRUCTION SCRAPER TRACTOR
4X4 MKVI

STANDARD EQUIPMENT (continued) Analogue Gauges • Engine coolant temperature • Engine oil pressure
 • System air pressure • Transmission oil temperature • Fuel • Speedometer

LCD Display • Transmission gear selection • Tachometer • Battery voltage • Hourmeter • Odometer

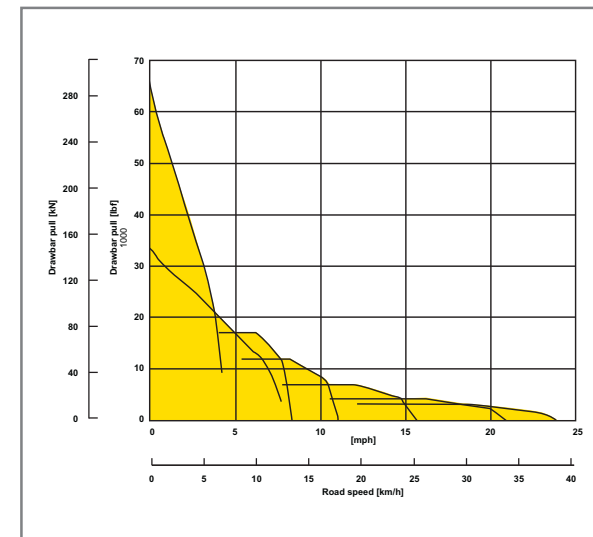
Brakes Vented dry disc calipers on front and rear axles
 Fully hydraulically actuated
 Spring applied air release park brake on rear driveshaft

Other Ground driven emergency steering
 Tow recovery cable
 • Fleetmatic Satellite Monitoring System

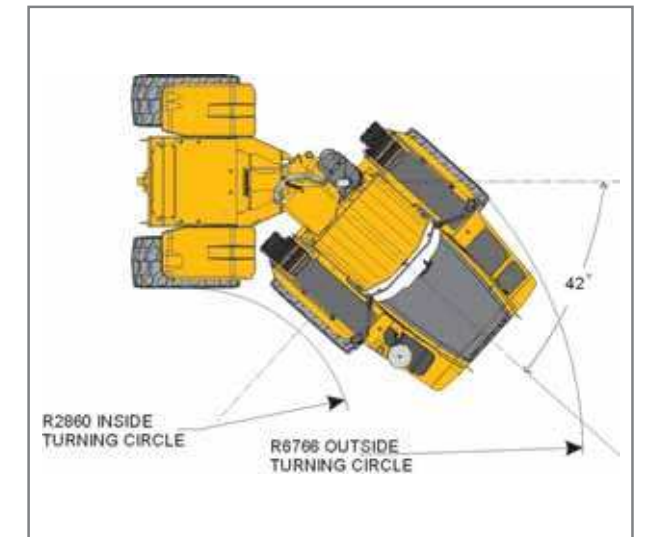
OPTIONAL EQUIPMENT (Factory and field installed)
 • Electrically adjustable rearview mirrors
 • Retractable sun visor
 • Tyre pressure monitoring
 • Fleetmatic product packages
 • 29.5R25 radial earthmover tyres
 • Groeneveld central lubrication system
 • Flashing beacon
 • Work lights
 • Artic reverse light
 • Electrical horn
 • 2 extra batteries
 • Fuel filter heating element
 • Electric adjust and heated mirrors (one per side)
 • Dual circuit oil immersed multidisc brakes on front and rear axles with remote multidisc brake cooler
 • CD/FM Radio

Provision for: Wiggins quick fueling system

DRAWBAR PULL GRAPH



TURNING RADIUS



TURNING RADIUS

