

# 4206D-T

CONSTRUCTION  
SCRAPER  
TRACTOR



Wheeled version shown



What makes the  
4206D the  
Ultimate  
Scraper Tractor...

- True construction machine heritage.
- Heavy duty drivetrain, transmission and axles designed for 60 ton + gross weight application.
- Supreme driver comfort from a nitrogen over oil strut semi independent suspension system.
- Programmable Hydraulic Control System permitting fine tuning of the Scraper controls.
- Torque converter drive with lock up clutch provides torque multiplication while reducing drivetrain shock loads.
- Lock up clutch provides direct drive economy.

BELL EQUIPMENT USA: Georgia • Tel: +1-912-966-2615 Fax: +1-912-964-1594  
HEAD OFFICE: Richards Bay, South Africa • Tel: 27-35-907 9111 Fax: 27-35-797 4323 • www.bellequipment.com

All dimensions are shown in millimetres, unless otherwise stated between brackets. Under our policy of continuous improvement, we reserve the right to change specifications and design without prior notice. Photographs featured in this brochure may include optional equipment.

**Strong Reliable Machines  
Strong Reliable Support**



SPEC/3997/03/05 - 4206D-T tractor

# 4206D-T

CONSTRUCTION  
SCRAPER  
TRACTOR



*key features*

- Gross Power 422 hp
- Gross Torque 1,473 lbft
- Gross Weight 61,380 lbs



# 4206D-T CONSTRUCTION SCRAPER TRACTOR

## ENGINE

Mercedes Benz OM501LA
Gross power 422 hp @ 1 800 rpm
Net Power 413 hp @ 1 800 rpm
Gross torque 1,473 lbft @ 1 080 rpm
Displacement 730 cu.in
Fuel tank capacity 128 US gal

## TRANSMISSION

Allison HD 4060
Gears 6 Forward, 1 Reverse
Clutch type Hydraulically operated multi-disc
Torque converter layout Hydrodynamic, with lock-up in all gears

Vehicle speeds	1st	2nd	3rd	4th	5th	6th
mph	3.9	7.2	9.7	13.8	18.6	21.6

## TRANSFER CASE

VGR 17000
Layout Three in-line helical gears

## AXLES

Bell 25 tonne
Differential type Spiral bevel type with Controlled Traction Differentials
Final drive type Outboard heavy duty planetary

## BRAKING SYSTEM

SERVICE BRAKE	Dual circuit, full hydraulic actuation ventilated dry disc brakes
Maximum brake force	30,124 lbf
PARK & EMERGENCY	Spring applied, air released driveline-mounted disc.
Maximum brake force	98,920 lbf
Auxilliary Brake	Automatic exhaust brake and Engine Valve Brake (EVB)

## TRACK MODULES

ATI Modular Track System
Rubber Track Goodyear 36" Heavy Duty
Dual Accumulator, self tensioning

## SUSPENSION

Front type	Semi-independent leading A-frame supported by nitrogen/oil struts
Rear type	Solid mounted

**HYDRAULIC SYSTEM** Full load sensing system serving the prioritized steering, scraper and brake functions. A ground-driven, load sensing emergency steering pump is integrated into the main system

Pump Type	Variable displacement, loadsensing piston
-----------	---

Application Steering, scraper operation, hydraulic brake charging and cooling fan drive

Flow:	79.26 US gal/min
Pressure:	2,900 psi
Filter:	10 micron

## HYDRAULIC SYSTEM

Scraper Controls  
Scraper Configurations 1,2 or 3 Scrapers: 2 or 3 controls per scraper

Hydraulic Control Valve The Control Valve is a stackable multi-section, load sensing, pressure compensated, proportional directional valve with port relief valves in the down ports.

Electro Hydr. controls Parker Hydraulics IQAN System. Fully programmable to suit conditions.  
- Scrapers

**PNEUMATIC SYSTEM** Air drier with heater and integral unloader valve, serving park brake and auxiliary functions

System pressure 117 psi

## ELECTRICAL SYSTEM

Voltage	24 V
Battery type	Two maintenance free permanently sealed
Battery capacity	2 x 105 Ah (optional 2 extra batteries)
Alternator rating	28 V 100 A

**STEERING SYSTEM** Hydrostatically actuated by two double acting cylinders, with ground-driven emergency steering pump.

## OPERATING WEIGHTS

Front	32,055 lbs
Rear	16,755 lbs
Gross Weight	48,810 lbs

## STANDARD EQUIPMENT

Cab ROPS/FOPS certification  
• Handrails on fenders • Tilt cab for service access • Gas strut supported door • Tinted safety glass • Sliding windows • Heated rearview mirrors  
• Sun visor • Wiper/washer with intermittent control • Rear window

# 4206D-T CONSTRUCTION SCRAPER TRACTOR

## STANDARD EQUIPMENT

wiper/washer • Tilt and telescoping steering wheel • Adjustable, air suspension seat rotated by 15 degrees • Fold-away trainer seat • Overhead console for FM and 2-way radio, compartments for storage, electrical relays and circuit breakers • Work lights • Drinks holder • Cooled/heated lunchbox • Flashing beacon

**MDU Features** • Trip timer • Trip distance • Diagnostics • Intermittent wiper timing control • Speedo calibration for alternative track or tyre sizes

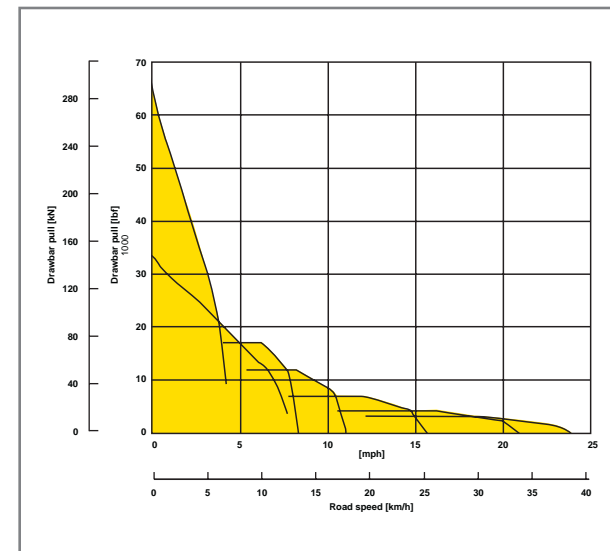
## STANDARD EQUIPMENT

• Metric /Imperial unit selection • Warning lights with audible buzzer • Fuel consumption-actual & timed • Engine loading

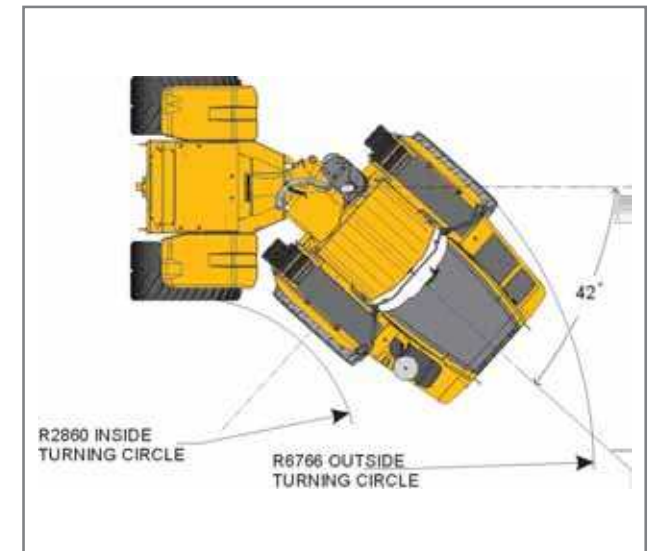
## OPTIONAL EQUIPMENT

Central auto lubrication system  
Artic reverse light  
Electrical horn  
Dual battery kit  
Fuel filter heating element  
Wiggins quick fueling system  
Auxiliary fuel tank

## DRAWBAR PULL GRAPH



## TURNING RADIUS



## TURNING RADIUS

