

# Bronto Skylift S 56 XR

## Data sheet

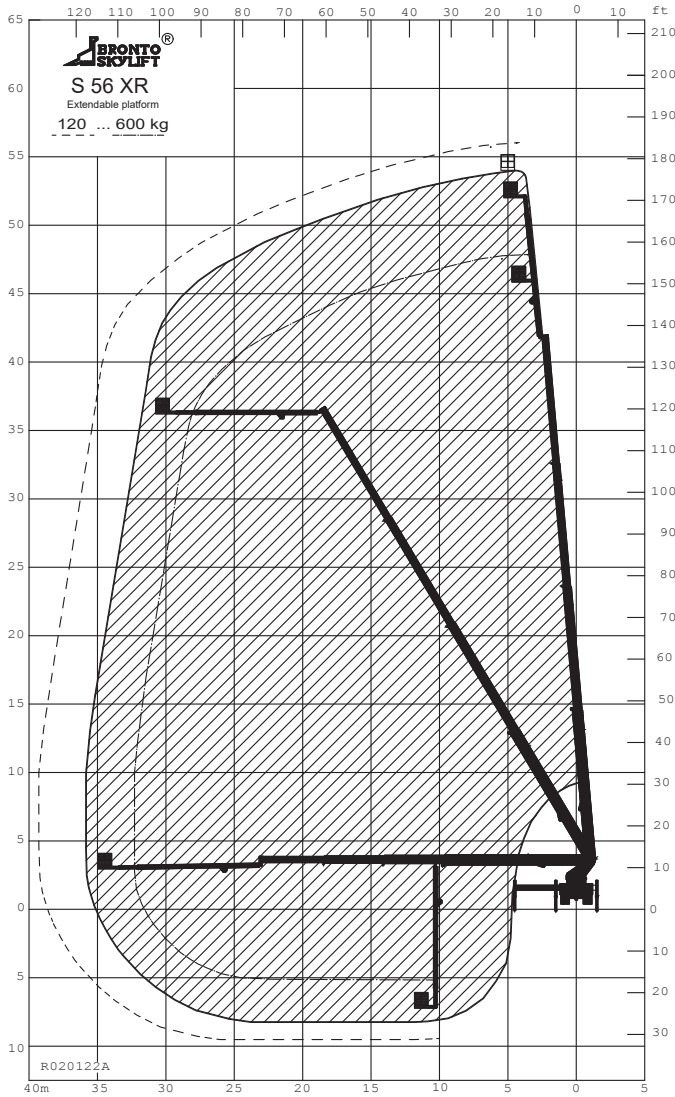


### Technical data

- Max. working height 56 m
- Max. outreach 40 m
- Max. up and over 16 m
- Max. cage load 700 kg  
Extendable cage 600 kg
- Typical chassis GVW 26 t
- Max. permitted wind speed 12,5m/s

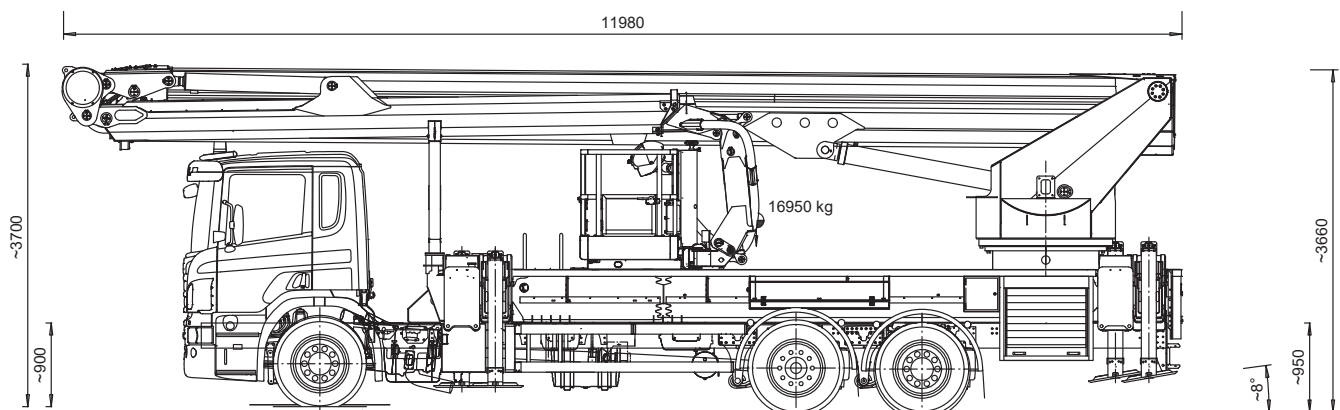
### Features

- Variable jacking
- Automatic levelling
- Easy and precise control system
- Sky jib with automatic and manual operation
- Variety of optional equipment
- Spare parts available for at least 25 years
- [skyliftfleet.com](http://skyliftfleet.com)
- Bronto Compass remote diagnostics



## Optional equipment

- Extendable working cage with hydraulic extension up to 3,7 meters
- CW-400, detachable winch in the working cage 400 kg and winch arm slewing +/- 45 degrees (only for materials).
- BW-1100, boom winch mounted in the end of the 1st boom (mechanical structure, electricity and winch). Capacity 1100 kg. (only for materials)
- Ultrasonic collision guard, 4 sensors
- B-RCC, Rotating camera cage
- Element lifting system. 1pc capacity 150 kg.
- Lighting rig, capacity 300 kg
- B-WRC Wireless Remote Control
- A 6,5 kVA (230 V / 400 V/ 50Hz) hydraulically driven generator.
- Bronto Loadman, portable device for measuring the bearing capacity of ground.
- Electric motor drive for the hydraulics
- Round ground pads



[www.brontoskylift.com](http://www.brontoskylift.com)

e-mail: [sales@brontoskylift.com](mailto:sales@brontoskylift.com)

Technical data and illustrations subject to change without notice