

688G

Series 2 Telescopic Handler



PERFORMANCE SPECS

Rated load capacities*

Max. lift capacity 8,000 lb (3628 kg)

Boom retracted
at max. angle..... 8,000 lb (3628 kg)

Boom extended
at max. angle 7,000 lb (3175 kg)
at max. reach 1,900 lb (862 kg)

Max. lift height 43' (13.1 m)

Max. boom angle 70°

Max. forward reach** 28' (8.5 m)

Max. vertical reach
below grade..... 34" (0.86 m)

Frame leveling (each side) ±12°

Max. reach @ max. height** 52"
(1.3 m)

Turning radius..... 176" (4.6 m)

ENGINE

Model..... Case 4T-390

Type..... 4-cylinder, turbocharged

Displacement..... 239 in³ (3.9 L)

Horsepower –
Gross..... 110 (82 kW) @ 2500 rpm
Net 99 (74 kW) @ 2500 rpm
Peak torque
@ 1500 rpm 293 lb-ft (397 N·m)

POWERTRAIN

Transmission Powershift
w/soft shift

Travel speeds, forward/reverse
1st 0 - 5 mph (0 - 8 km/h)
2nd..... 0 - 15 mph (0 - 24.1 km/h)
3rd 0 - 21 mph (0 - 33.8 km/h)

Steering 2W, 4W and crab
Drive Planetary, 4-wheel drive
Axle oscillation..... ±12°

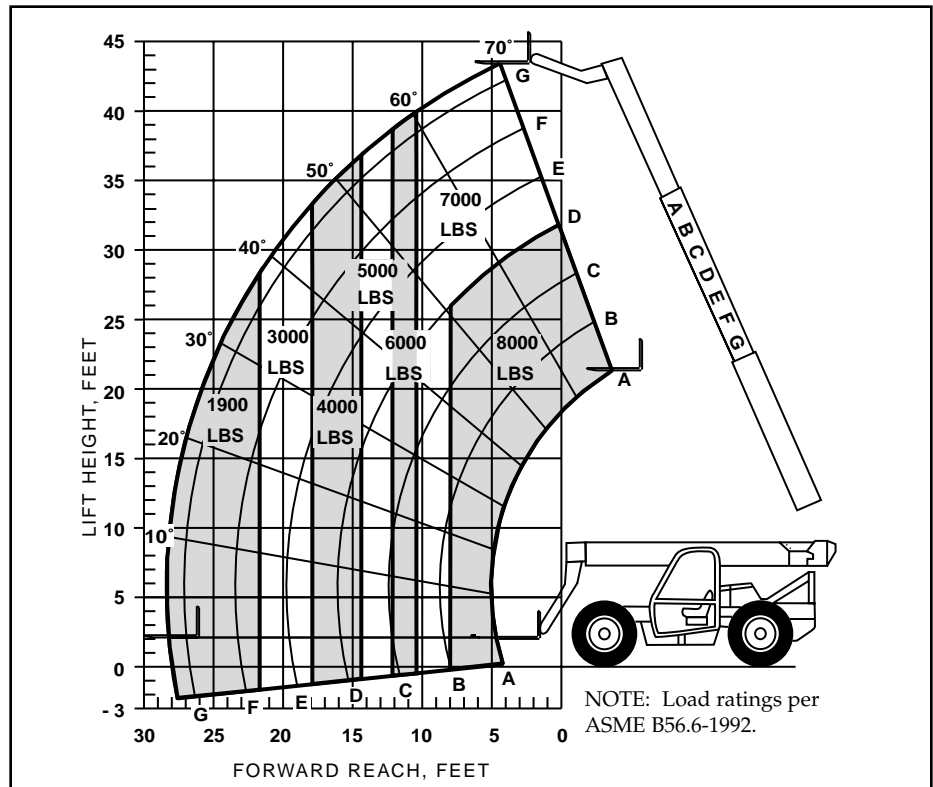
Service brakes..... 4-wheel, internal
power-assisted, enclosed wet disc

Parking brake..... Internal, SAHR

Tires 13.00 x 24 12PR L2/G2

NOTE: *48" (1.22 m), 60" (1.52 m), and 72" (1.83 m) wide quick-attach carriages and 48" (1.22 m) and 60" (1.52 m) side tilt carriages with 2" x 5" x 48" (51 mm x 127 mm x 1.22 m) and 2" x 5" x 60" (51 mm x 127 mm x 1.52 m) standard taper forks; 2" x 1.5" x 45" (51 mm x 38 mm x 1.14 m) block forks; and 1.75" x 7" x 48" (44 mm x 178 mm x 1.22 m), and 1.75" x 7" x 60" (44 mm x 178 mm x 1.52 m) fully tapered forks.

**Measured from front of tires to 24" (610 mm) load center.



BOOM

Type..... 3 stage telescopic
4 plate welded box boom
w/replaceable wear pads
w/wear indicators

Automatic fork leveling

Boom cushion control

Boom angles –
Up..... 70°
Down..... - 6°

Boom head rotation..... 101°

HYDRAULIC SYSTEM

Pump..... Axial piston
load-sensing variable
displacement hydraulic pump

Controls..... Pilot-operated

Pump flow @ rated engine rpm
Total 34 gpm (129 L/min)
@ 2500 rpm

ELECTRICAL SYSTEM

Alternator..... 62 amp

Battery 12 volt, negative ground
900 cold-cranking amps

SERVICE CAPACITIES

Fuel tank..... 35 gal (132.5 L)

Engine oil..... 11.6 qt (11 L)

Radiator 20 qt (18.9 L)

Hydraulic system..... 40 gal (151.4 L)

STANDARD EQUIPMENT

Frame leveling w/indicator

ROPS/FOPS

Unitized frame

Joystick boom controls

Quick-attach coupler

Horn and backup alarm

Rear view mirrors

Carriage..... 48" (1.22 m)
w/2" (51 mm) floating pin
for precise load control

Retractable 2" (51 mm) seat belt

Security engine and battery covers

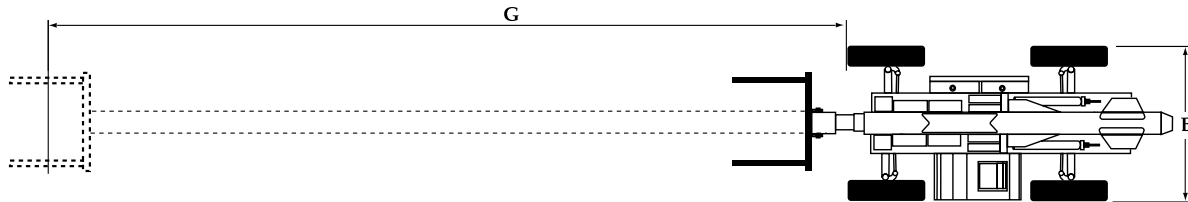
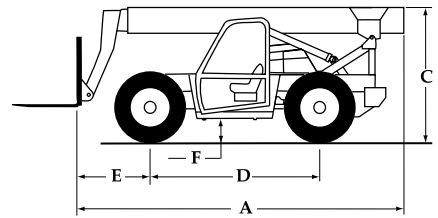
Front, rear and right side windows

DIMENSIONS

- A.** Overall length –
w/o attachment 21'0" (6.4 m)
- B.** Overall width 8'6" (2.6 m)
- C.** Transport height 7'11" (2.4 m)
- D.** Wheelbase 128" (3.2 m)
- E.** Reach –
Drive axle to carriage 56.3"
(1.43 m)

- F.** Ground clearance 16" (406 mm)
- G.** Max. forward reach from front of
tires 28'2" (8.6 m)
- Turning radius[†] 147" (3.7 m)
- Shipping weight[‡] .. 22,813 lb (10 348 kg)

NOTE: [†]Using 4-wheel coordinated steering.
[‡]Excludes attachments.



OPERATOR ENVIRONMENT

- Controls Column mounted,
forward/neutral/reverse
transmission control w/twist grip
1-2-3 speed control. Twin pilot
boom control joysticks
w/simultaneous 4-function ability
- Visibility 360° boom up or down
w/large, well-placed mirrors
- Gauges –
Hourmeter
Voltmeter
Fuel level
Water temperature
Oil pressure
Transmission oil temperature
- Indicators –
Boom angle indicator
Frame level indicator
Air cleaner restriction
Parking brake light
- Accessories –
Backup alarm
Horn

OPTIONS

- All-weather cab w/ heater/defroster
Windshield wiper (front and rear)
Cab dome light
Suspension seat
Auxiliary hydraulics
Ether cold start aid
Engine block heater
Cold weather start aid
Front and rear headlights
Turn signals and 4-way flashers
Rotating beacon
Stabilizers
Vandal protection kit
Tyrlyner*
Foam-filled tires
Yokohama Rock Tread tires

CARRIAGES

- 48" (1.22 m) w/load backrest
60" (1.83 m) w/load backrest
72" (1.83 m) w/load backrest
48" (1.22 m) w/6° side tilt
60" (1.52 m) w/6° side tilt

FORKS

- Pallet forks –
2" x 5" x 48"
(44 mm x 127 mm x 1.22 m)
2" x 5" x 60"
(44 mm x 127 mm x 1.52 m)
- Block forks, set of 6 –
2" x 1.5" x 45"
(44 mm x 38 mm x 1.14 m)
- Fully tapered –
1.75" x 7" x 48"
(44 mm x 178 mm x 1.22 m)
1.75" x 7" x 60"
(44 mm x 178 mm x 1.52 m)

ATTACHMENTS

- Truss boom 12' (3.65 m)
Load capacity 2,000 lb (907 kg)
- Bucket 80" (2.03 m).. 1.75 yd³ (1.34 m³)

NOTE: Case does not approve the use of its telescopic handlers for lifting personnel under any conditions. All specifications are stated in accordance with ASME B56.6 1992 Standards or Recommended Practices, where applicable.

IMPORTANT: Case Corporation reserves the right to change these specifications without notice and without incurring any obligation relating to such change. Case Corporation does not warrant the safety or reliability of attachments from other manufacturers.

*Tyrlyner is a registered trademark of Synair Corp.

© 2000 CASE CORPORATION.
All Rights Reserved.

CASE CONSTRUCTION EQUIPMENT CONTACT INFORMATION

NORTH AMERICA/MEXICO
700 STATE STREET
RACINE, WI 53404 U.S.A.

Form No. CE 218-10-00
Replaces Form No. CE 218-12-99



Visit Case Corporation on the Web at:
<http://www.casece.com>
Printed in U.S.A.