

CASE
CONSTRUCTION

CX B SERIES EXCAVATORS

CX130B | CX160B | CX210B | CX240B | CX290B
CX350B | CX470B | CX700B | CX800B



Case Delivers Full-Service Solutions

EQUIPMENT | FINANCING | PARTS & SERVICE

CX B SERIES EXCAVATORS

**CX130B | CX160B | CX210B | CX240B | CX290B
CX350B | CX470B | CX700B | CX800B**

Meet the next generation of full-sized excavators. Case has raised the bar for the entire industry in terms of fuel efficiency, operator comfort and serviceability with the B Series excavators. Driven by advanced design and engineering, these machines provide efficient, responsive hydraulics and quiet operation. Plus, we stand behind every excavator with a dedicated customer support call center.

A full line of excavators for every need

We know you need to be as productive as possible on the job. Case offers a full line of excavators, from 3,638 pounds up to 80 metric tons, giving you plenty of power and performance to get the job done. Our five compact models offer zero tail swing and a center-swing boom for maximum productivity in the tightest spaces. Our three minimum swing radius models excel at digging and lifting, whether they're working in cramped construction sites or along busy highways. Matched with the nine full-sized B Series excavators, Case brings you a full complement of excavators that are built for the jobs where high performance and durability are important. Your Case dealer can help you choose the right excavator to suit your needs.

Increased fuel efficiency

The common rail fuel injection system on these full-sized excavators, combined with the redesigned hydraulic system, delivers up to seven-percent better fuel efficiency than the competition. That's a huge savings. These machines also provide a substantial increase in productivity, which results in more cubic yards of material per gallon of fuel.

Quiet comfort

The new cab on the B Series excavators features improved operator comfort and ergonomics. Best of all, these machines are among the quietest in the industry, even at full throttle.

Superior serviceability

Case excavators are known for their legendary easy service and maintenance design. These excavators feature improvements that extend equipment life, increase machine utilization and maximize profitability. Grease intervals have been extended for improved productivity and durability. The new hydraulic oil filter provides full, 100-percent continuous flow filtration of all hydraulic oil on the return line.

Keeping you up and running, Case also provides world-class parts and technical support through our extensive dealer network and toll-free customer support call center – 1-866-54CASE6.

CX290B



CX130B



CX160B



CX210B



CX240B





CX350B



CX470B



CX700B



CX800B



CX B SERIES EXCAVATORS

**CX130B | CX160B | CX210B | CX240B | CX290B
CX350B | CX470B | CX700B | CX800B**

A full line of excavators for every need

When it comes to excavators, Case offers a wide variety of sizes, power and versatility to get the project done and move on to the next job site. From light residential or landscape jobs requiring a compact, maneuverable machine, to mass excavation, at a quarry or a bridge project requiring heavy muscle and long reach, Case excavators have you covered day in and day out.

The smallest excavators Case Construction produces are our compact excavators — plenty of large machine features in a small size. Our Minimum Swing Radius (MSR) excavators are designed to deliver the productivity of a full-size machine in a confined space. See the Case Compact and MSR excavator brochures for the full story.

The nine, full size, B Series excavators provide the muscle and finesse to take on whatever comes along. They feature powerful and efficient Case engines, multiple work modes, auto power boost and a climate controlled, isolation-mounted cab for all day operator comfort.

In addition, rest assured that all Case excavators feature our legendary superior service and easy-maintenance design.





Increased fuel efficiency

Featuring electronically controlled, common rail, Tier III-certified Case engines which burn cleaner and more efficiently, Case B Series excavators provide up to a 17-percent increase in horsepower. They also deliver up to a 20-percent increase in fuel efficiency over previous models and the competition. That's a difference in fuel use of about a gallon an hour. Over a year's time, that's a fuel savings of \$5,000 that goes straight to your bottom line.

Not only do these machines deliver increased fuel efficiency and horsepower, they also provide a substantial increase in productivity. In field tests conducted by Case, the B Series excavators easily moved 25-percent more cubic yards of material per gallon of fuel than previous models and the competition.

CX B SERIES EXCAVATORS

CX130B | CX160B | CX210B | CX240B | CX290B
CX350B | CX470B | CX700B | CX800B



Optional configurations

For specialty work, select B Series excavators are available in long reach (CX210B and CX240B), long carriage (CX130B) and narrow undercarriage (CX210B) configurations.



Auxiliary hydraulic flow patterns

B Series excavators store up to 10 auxiliary hydraulic flow patterns to let you quickly adapt between attachment changes.



Room to work

The wide doorway and lift-up left control console make for easy cab entry and exit. The seat accommodates operators of all sizes and builds and a built-in lumbar support helps reduce operator fatigue.



Increased visibility

The new cab is equipped with 24 percent more front glass than earlier models. Whether you're positioning for work alongside a trench or boarding a trailer, the lower right window makes it easier with a clear view to the inside of the right track.





Power under the hood

At the heart of each Case B Series excavator is a turbocharged diesel engine with charge-air cooling designed and built for outstanding productivity, reliability and economy.



Fuel efficiency and performance

The 24-valve cylinder head in the Case engine features centered fuel injection, which improves combustion and produces better low end torque and response. Electronic fuel injection in the Case B Series excavator supplies higher injection pressure for better fuel atomization, resulting in a cleaner burn, superior fuel economy and outstanding engine performance.



Lubricated bushings

Impregnated bushings in all boom, arm and bucket-pin locations extend the grease intervals—1,000 hours on the boom and arm and 250 hours on the bucket—which improve productivity and durability.



Service panels

True to Case engineering, flip-open service panels provide easy access to all key components.

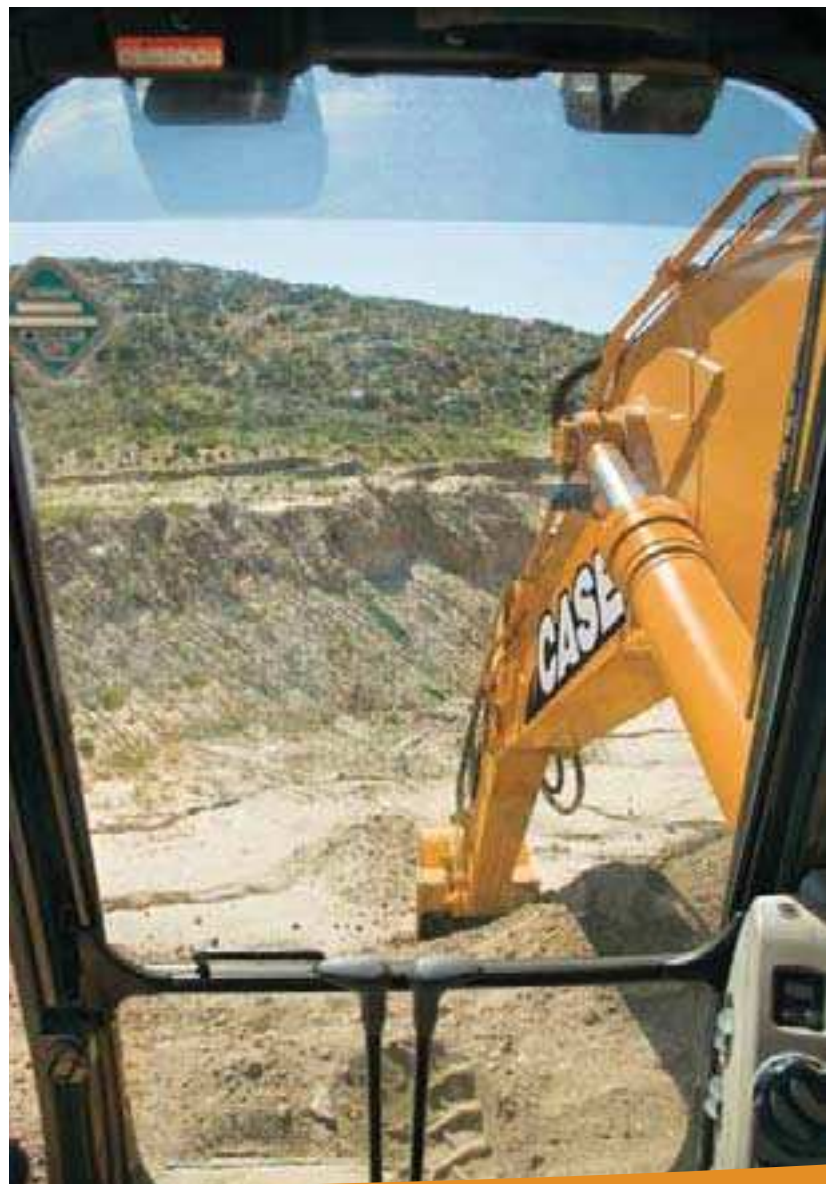


Remote oil filters

The pump house location of the vertically mounted fuel and oil filters allows for easy changes without going underneath the machine.

CX B SERIES EXCAVATORS

**CX130B | CX160B | CX210B | CX240B | CX290B
CX350B | CX470B | CX700B | CX800B**



Quiet comfort

Case increased the power and performance of the B Series excavators without increasing noise levels. At 68.5 dBA, the ultra low sound level inside the isolation-mounted cab is among the quietest in the industry. A quiet cab means a more comfortable operator and that means greater productivity. Reinforced tubular structures dampen vibrations, further reducing noise and operator fatigue.

The cabs on these machines feature a seat that adjusts independently of the joystick controls for improved operator comfort and ergonomics, as well as a memorized operator adjustment, which automatically adjusts to the last settings selected by the operator. An optional air seat provides even greater operator comfort.

The left and right-hand consoles provide convenient reach to key functions. The left-hand console features a memorized operator adjustment setting. When the operator needs to silence the radio to take a phone call or instructions from outside the cab, the operator can use the radio mute button on the joystick.

The narrower, reinforced posts on the corners of the cab provide more glass and a broader view to the job site. The right-hand window provides clear, unobstructed viewing to the trench. An optional see-through skylight further enhances visibility.



Superior serviceability

Case B Series excavators lead the industry with a 39-percent improvement in maintainability and serviceability, as measured by the SAE maintenance specifications. In fact, these machines earned 14,917 points, well below the SAE target of 16,000. Case excavators feature improvements that simplify maintenance, extend equipment life and increase machine utilization.

Serviceability is improved with innovations like the green plug for an easier, cleaner and greener engine oil change. The hydraulic engine oil filter is located in the pump house for easy changing without going underneath the machine. Grease zerks are ganged together for faster, easier access. And in the hallmark style associated with Case equipment, flip-open service panels provide easy access to virtually all key components.

With all these great service and maintenance features, you'll spend less time and money maintaining a Case excavator than you would with competitive models.

Case provides the support of an extensive dealer network, as well as access to toll-free customer support at 1-866-54CASE6.



CX B SERIES EXCAVATORS

**CX130B | CX160B | CX210B | CX240B | CX290B
CX350B | CX470B | CX700B | CX800B**

Attachments and buckets deliver unbeatable versatility

Case offers a variety of excavator attachments to increase the value of your investment. B Series excavators store up to 10 auxiliary hydraulic flow patterns to let you quickly adapt between attachment changes.

Backed by the full line of buckets, teeth, adapters and accessories offered by Case, you'll be able to dig with confidence in all kinds of applications and soil conditions.

Buckets are designed and built for maximum breakout capacity, fill factors and clean dumping and are available in a variety of widths and capacities. You can choose from general purpose, heavy-duty, severe-duty and ditching buckets.

For quick, convenient changes of buckets and other attachments, outfit your B Series excavator with a hydraulic coupler to get the job done fast.

When equipped with auxiliary hydraulics, a B Series excavator can take on a multitude of available attachments, including a versatile thumb for grasping loose loads like timber and scrap.



Ditching (DTCH)



Hydraulic Coupler



Thumb



General Purpose (STDP)



Heavy-Duty (HDP)



Severe-Duty (SDP)

You can count on Case

You can count on Case and your Case dealer for full-service solutions—productive equipment, expert advice, flexible financing, genuine Case parts and fast service. We're here to provide you with the ultimate ownership experience.

Case pride

You can take pride in the Case name on your machine. It's backed by more than a century of productivity and performance. Case and your Case dealer are here for you, not only when you buy the machine, but also after you put 1,000 or 10,000 hours on it.

A rich, proud history

Case Construction Equipment's heritage spans more than 165 years. Growing from J.I. Case's innovations with steam-powered machinery in the late 1800s, Case developed road-building equipment that helped create early 20th century streets and highways across the world. By 1912, Case was well on its way to establishing itself as a full-line equipment manufacturer. The company continued to expand its construction equipment business over the years.

Celebrating a tradition of innovation

In 1957, Case produced the world's first integrated loader/backhoe made and warranted by one manufacturer. Over the decades and into the 21st century, Case has continued to develop a long line of industry firsts and has taken a leadership role in pioneering new products and solutions. Today, Case produces 15 lines of equipment and more than 90 models to meet your toughest construction challenges. Supported by manufacturing and sales in more than 150 countries, Case serves the needs of our customers worldwide.

Coast-to-coast customer support

In North America, Case equipment is sold and serviced by more than 375 dealer locations. No matter where you work, we're here to support and protect your investment and exceed your expectations.

To locate a Case dealer or learn more about Case equipment or customer service, go to www.casece.com or call 1-866-54CASE6.

It all adds up. You can count on Case.

Case Delivers Full-Service Solutions

EQUIPMENT | FINANCING | PARTS & SERVICE



CX B SERIES EXCAVATORS

	CX130B	CX160B	CX210B
Engine	95 hp (71 kW)	120 hp (89.5 kW)	157 hp (117 kW)
Dig depth	19 ft 10 in (6.1 m)	21 ft 4 in (6.5 m)	21 ft 10 in (6.7 m)
Operating weight	27,800 lb (12 610 kg)	37,700 lb (17 100 kg)	47,400 lb (21 500 kg)
Biodiesel rating	B5 approved	B5 approved	B5 approved

	CX240B	CX290B	CX350B
Engine	177 hp (132 kW)	207 hp (154 kW)	271 hp (202 kW)
Dig depth	24 ft 4 in (7.4 m)	24 ft 11 in (7.6 m)	26 ft 8 in (8.1 m)
Operating weight	55,120 lb (25 002 kg)	65,697 lb (29 800 kg)	79,065 lb (35 863 kg)
Biodiesel rating	B5 approved	B5 approved	B5 approved

	CX470B	CX700B	CX800B
Engine	362 hp (270 kW)	463 hp (345 kW)	532 hp (397 kW)
Dig depth	27 ft 4 in (8.3 m)	32 ft 4 in (9.9 m)	35 ft 0 in (10.7 m)
Operating weight	103,800 lb (47 083 kg)	153,400 lb (69 581 kg)	178,575 lb (81 500 kg)
Biodiesel rating	B5 approved	B5 approved	B5 approved



CX130B



CX160B



CX210B



CX240B



CX290B



CX350B



CX470B



CX700B



CX800B

NOTE: All engines meet current EPA emission regulations.

NOTE: All specifications are stated in accordance with SAE standards or recommended practices, where applicable.

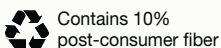
IMPORTANT: Case Construction Equipment Inc. reserves the right to change these specifications without notice and without incurring any obligation relating to such change. Availability of some models and equipment builds vary according to the country in which the equipment is used. The illustrations and text may include optional equipment and accessories and may not include all standard equipment. Your Case dealer/distributor will be able to give you details of the products and their specifications available in your area.



Always read the operator's manual before operating any equipment. Inspect equipment before using it and be sure it is operating properly. Follow the product safety signs and use any safety features provided.

©2008 CNH America LLC. All rights reserved. Case is a registered trademark of CNH America LLC. Any trademarks referred to herein, in association with goods and/or services of companies other than CNH America LLC, are the property of those respective companies. Printed in U.S.A.

Form No. CCE10090802 Replaces Form No. CCE1100806



Case construction equipment is biodiesel friendly.



Looking for product specs, customer testimonials, competitive comparisons, finance offers and more?
Visit us at www.casece.com or call 866-54CASE6