

**D-SERIES CRAWLER EXCAVATORS  
CX750D / CX750D ME**

**CASE**  
CONSTRUCTION



**TIER 4  
FINAL  
EU STAGE IV**

**IT'S TIME  
FOR MORE**

[www.casece.com](http://www.casece.com)  
**EXPERTS FOR THE REAL WORLD  
SINCE 1842**

Courtesy of Machine.Market

# MAIN REASONS TO CHOOSE THE D-SERIES



## POWER TO PERFORM

- 512 hp engine power
- Best-in-class lifting capacity
- New electronically controlled hydraulic pumps for fast working cycles



## HIGH VERSATILITY

- Dedicated model for mass excavation to provide outstanding breakout force performance
- Working modes easily adapt to every work load



## HIGH EFFICIENCY

- Energy saving system to take advantage of all fuel saving opportunities
- High levels of AdBlue autonomy with large AdBlue tank and low additive consumption



## TIER4 FINAL/STAGE IV ENGINE

- Selective Catalytic Reduction after-treatment system and Diesel Oxidation Catalyst
- DPF-free solution saves time and maintenance costs, in addition to delivering a powerful and fuel efficient performance



## HIGH RELIABILITY

- Reliability and durability with the redesigned arm, boom and undercarriage
- CX750D: standard hydrostatic reversible fan to match the real cooling demand, reducing power absorption and reducing maintenance needs thanks to the reversing mode



## SAFE OPERATION

- All filters now located in the pump compartment
- Wider catwalk for a safer maintenance
- Factory fitted travel alarm for greater safety on the jobsite around the machine



## COMFORTABLE CAB

- Extra spacious cab
- Fully adjustable workstation
- New high back seat



## BETTER VISIBILITY

- Standard rear and side cameras
- Optional CASE maximum view monitor (270° rear & side view)
- New LED working light package, is more than three times brighter than its halogen equivalent

## ENGINE

**CX750D**

**CX750D ME**

Model \_\_\_\_\_ ISUZU AH-6WG1X  
 Type \_\_\_\_\_ Water-cooled, 4-cycle diesel, 6-cylinder in line,  
 high pressure common rail system (electric control), Turbocharger with air cooled intercooler,  
 without cooling fan, SCR system

Number of cylinders / Displacement (l) \_\_\_\_\_ 6/15.7

Emissions level \_\_\_\_\_ Tier 4 final / Eu stage IV

Bore & stroke (mm) \_\_\_\_\_ 147 x 154

### Rated flywheel horse power

ISO 14396 (kW / hp) \_\_\_\_\_ 382 / 512 at 1800 min<sup>-1</sup>

With fan pump (kW / hp) \_\_\_\_\_ 343 / 460

### Maximum torque

ISO 14396 (Nm) \_\_\_\_\_ 2200 at 1450 min<sup>-1</sup>

## HYDRAULIC SYSTEM

Main pumps \_\_\_\_\_ 2 variable displacement axial piston pumps  
 with regulating system

Max. oil flow (l/min) \_\_\_\_\_ 2 x 472 at 1800 min<sup>-1</sup>

### Working circuit pressure

Boom/Arm/Bucket (MPa) \_\_\_\_\_ 31.4

With auto power boost (MPa) \_\_\_\_\_ 34.3

Swing circuit (MPa) \_\_\_\_\_ 27.9

Travel circuit (MPa) \_\_\_\_\_ 34.3

**Pilot pump** \_\_\_\_\_ 1 gear pump

Max. oil flow (l/min) \_\_\_\_\_ 27

Working circuit pressure (MPa) \_\_\_\_\_ 4.4

### Boom Cylinders

Bore (mm) \_\_\_\_\_ 190

Stroke (mm) \_\_\_\_\_ 1805

### Arm Cylinders

Bore (mm) \_\_\_\_\_ 210

Stroke (mm) \_\_\_\_\_ 2055

### Bucket Cylinders

Bore (mm) \_\_\_\_\_ 185 | 200

Stroke (mm) \_\_\_\_\_ 1465 | 1450

## SWING

Maximum swing speed (min<sup>-1</sup>) \_\_\_\_\_ 6.7

Swing torque (kNm) \_\_\_\_\_ 241

## UNDERCARRIAGE

High travel speed (km/h) \_\_\_\_\_ 4.3

Low travel speed (km/h) \_\_\_\_\_ 3.0

Drawbar pull (kN) \_\_\_\_\_ 449

Track shoes \_\_\_\_\_ 650 mm double grouser shoes,  
 750 mm and 900 mm triple grouser shoes

## CIRCUIT AND COMPONENT CAPACITIES

Fuel tank (l) \_\_\_\_\_ 900

Hydraulic system (l) \_\_\_\_\_ 650

Hydraulic reservoir (l) \_\_\_\_\_ 310

Adblue tank (l) \_\_\_\_\_ 152

## SOUND LEVEL

External guaranteed sound level  
 (EU Directive 2000/14/EC) \_\_\_\_\_ LwA 108 dB(A)

Operator cab sound pressure level  
 (ISO 6396) \_\_\_\_\_ LpA 73 dB(A)

## OPERATING WEIGHT AND GROUND PRESSURE

### CX750D

with 3.55 m arm, 2.9 m<sup>3</sup> bucket, 650 mm grouser shoes, operator, lubricant,  
 coolant, full fuel tank

Weight (kg) \_\_\_\_\_ 71400

Ground pressure (MPa) \_\_\_\_\_ 0,105

Counterweight (kg) \_\_\_\_\_ 10400

### CX750D ME

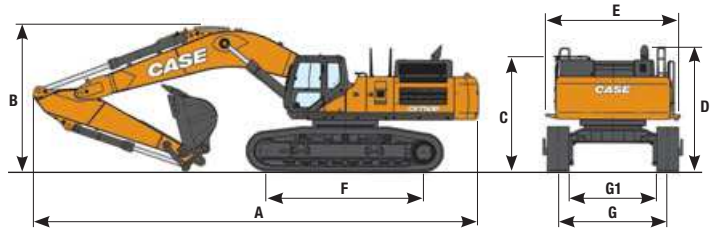
with 3.0 m arm, 4.0 m<sup>3</sup> bucket, 650 mm grouser shoes, operator, lubricant,  
 coolant, full fuel tank

Weight (kg) \_\_\_\_\_ 72000

Ground pressure (MPa) \_\_\_\_\_ 0,106

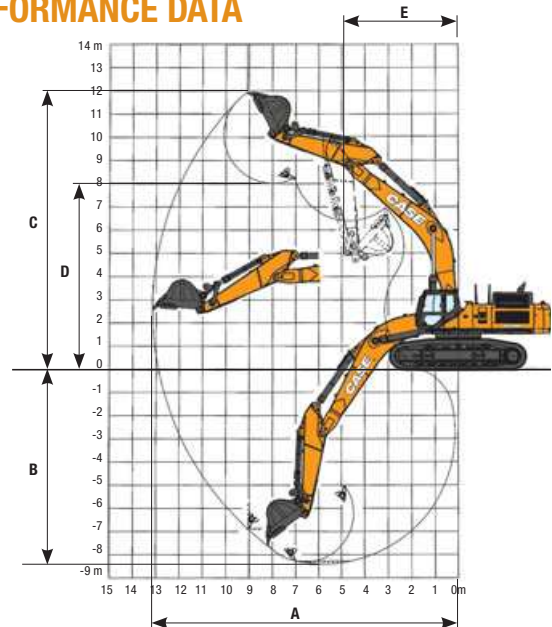
Counterweight (kg) \_\_\_\_\_ 10400

## GENERAL DIMENSIONS



		CX750D arm 3.55 m	CX750D ME arm 3.02 m
A	Overall length (with attachment)	mm 13370	12250
B	Overall height (to top of boom)	mm 4320	4960
C	Cab height	mm 3590	
D	Overall height (to top of guardrail)	mm 3950	
	Upper structure overall width (without catwalk)	mm 3700	
E	Upper structure overall width (with catwalk)	mm 4170	
F	Wheel base (center to center of wheels)	mm 4710	
G	Track gauge (Extended)	mm 3350	
G1	Track gauge (Retracted)	mm 2740	
	Undercarriage overall width (Extended) (with 650 mm shoes)	mm 4000	
	Undercarriage overall width (Retracted) (with 650 mm shoes)	mm 3390	
	Tail swing radius	mm 4050	

## PERFORMANCE DATA



		CX750D	CX750D ME
	Boom length	mm 7700	6580
	Arm length	mm 3550*	3020
A	Maximum reach	mm 13070	11730
B	Max digging depth	mm 8400	7180
C	Max digging height	mm 11630	11060
D	Max dumping height	mm 7810	6990
E	Min. Swing radius	mm 5810	5150

\* Standard HD arm - Optional 3.02 HD, 4.1 and 5.00 m arms

## DIGGING FORCE (ISO 6015)

**CX750D** with 3.55 m HD arm and 2.9 m<sup>3</sup> bucket

Arm digging force	kN 259
with auto power up	kN 283
Bucket digging force	kN 306
with auto power up	kN 334

**CX750D ME** with 3.0 m HD arm and 4.0 m<sup>3</sup> bucket

Arm digging force	kN 281
with auto power up	kN 307
Bucket digging force	kN 335
with auto power up	kN 366

Front. Side	REACH													
	2 m		4 m		6 m		8 m		10 m		12 m		At max reach	

**RTC UNDERCARRIAGE - Super long arm 5.0 m length, 650 mm shoes. Maximum reach 12.40 m**

10.0 m																		10120*	10120*	9.81
8.0 m									11750*	11750*								9640*	9640*	11.07
6.0 m									12330*	11670								9590*	8560	11.86
4.0 m																		9890*	7840	12.27
2.0 m																		10550*	7540	12.34
0 m																		11030	7610	12.08
-2.0 m	10800*	10800*	19940*	19940*	26930*	20550	19270*	13950	14610	10090	11130	7690					11810	8140	11.46	
-4.0 m	19190*	19190*	29900*	29900*	25110*	20540	18550*	13420	13860*	9860							12860*	9360	10.42	
-6.0 m	30330*	30330*	28620*	28620*	20640*	20640*	14910*	13810									12580*	12170	8.81	

**RTC UNDERCARRIAGE - Long arm 4.11 m length, 650 mm shoes. Maximum reach 11.50 m**

10.0 m																		13150*	13150*	8.75
8.0 m																		12440*	11430	10.14
6.0 m																		12390*	9720	11
4.0 m																		12560	8850	11.44
2.0 m																		12170	8510	11.52
0 m																		12440	8660	11.24
-2.0 m	11940*	11940*	21000*	21000*	26700*	20820	19720*	13700	14580	10080							13520	9380	10.57	
-4.0 m	23290*	23290*	32680*	32680*	23800*	21040	17700*	13810									13890*	11120	9.43	
-6.0 m																	12870*	12870*	7.6	

**RTC UNDERCARRIAGE - Standard arm 3.55 m length, 650 mm shoes. Maximum reach 11.00 m**

8.0 m																		14220*	12640	9.49
6.0 m																		14030*	10570	10.41
4.0 m																		13550	9550	10.87
2.0 m																		13120	9180	10.95
0 m																		13460	9370	10.65
-2.0 m																		14740*	10280	9.95
-4.0 m																		14550*	12520	8.73
-6.0 m																		12720*	12720*	6.71

**RTC UNDERCARRIAGE - Short arm 3.0 m length, 650 mm shoes. Maximum reach 10.70 m**

10.0 m																		16360*	16360*	7.58
8.0 m																		15220*	13150	9.16
6.0 m																		14820*	10910	10.1
4.0 m																		14010	9850	10.58
2.0 m																		13580	9490	10.67
0 m																		14020	9760	10.36
-2.0 m																		14670*	10820	9.63
-4.0 m																		13820*	13470	8.36

**RTC UNDERCARRIAGE - ME Short arm 3.0 m length, 650 mm shoes. Maximum reach 9.53 m**

8.0 m																		16730*	16730*	7.78
6.0 m																		16020*	13800	8.88
4.0 m																		16310*	12170	9.42
2.0 m																		16580	11650	9.51
0 m																		17280	12060	9.17
-2.0 m	22530*	22530*	37070*	37070*	26240*	21840	18690*	14520										17350*	13790	8.33
-4.0 m																		15970*	15970*	6.82

\* The above loads (kg) are compliant to the ISO standards and refer to the excavator equipped without bucket. The indicated loads are no more than 87% of hydraulic system lift capacity or 75% of static tipping load. Values marked with an asterisk (\*) are limited by the hydraulic lifting capacity.