

330F

Hydraulic Excavator



Engine

Engine Model	Cat® C7.1 ACERT™	
Net Power – SAE J1349/ISO 9249	175 kW	239 hp

Drive

Maximum Travel Speed	5.1 km/h	3.2 mph
Maximum Drawbar Pull	247 kN	55,528 lbf

Weight

Minimum Operating Weight	29 560 kg	65,169 lb
Maximum Operating Weight	31 707 kg	69,902 lb

Introduction

The 330F is built to keep your production numbers high and your owning and operating costs low. The machine's C7.1 ACERT engine not only meets U.S. EPA Tier 4 Final emission standards, but it does so with all the power, fuel efficiency, and reliability you need to be successful.

Where the real power comes in is through Caterpillar's unparalleled systems integration and state-of-the-art hydraulic system. You can literally move tons of material all day long with tremendous speed and precision. When you add a quiet operator environment that keeps you comfortable and productive, easy-to-reach service points that make routine maintenance simple and fast, and multiple Cat work tools that help you take on a variety of tasks with just one machine, you simply won't find a better, more efficient 29-ton excavator.

If productivity, comfort, versatility, and fuel efficiency are what you want, you need a 330F in your fleet.

Contents

Operator Station.....	4
Engine	6
Hydraulics	8
Structures & Undercarriage	9
Front Linkage	10
Integrated Technologies.....	11
Attachments.....	12
Serviceability.....	14
Safety	15
Complete Customer Care.....	16
Sustainability	17
Specifications.....	18
Standard Equipment.....	33
Optional Equipment.....	34
Notes.....	35





CAT
330F

CAT



Operator Station

Comfort and convenience to keep you productive

A Safe, Quiet Cab

The ROPS cab provides you with a safe working environment. It also contributes to your comfort because it's attached to a reinforced frame with special viscous mounts that limit vibration and unnecessary sound. Add in special roof lining and sealing and you have a cab that's as quiet inside as today's top pickup trucks.

Comfortable Seat Options

The seat range includes air suspension, heated, and air cooled options. All seats include a reclining back, upper and lower slide adjustments, and height and tilt angle adjustments to meet your needs for maximum comfort.

A Cool & Warm Environment

The automatic climate control system features multiple air outlets with filtered ventilation. Air flows on the floor, behind the seat, and in front of you to make your work in either hot or cold weather much more pleasant and productive.

Controls Just For You

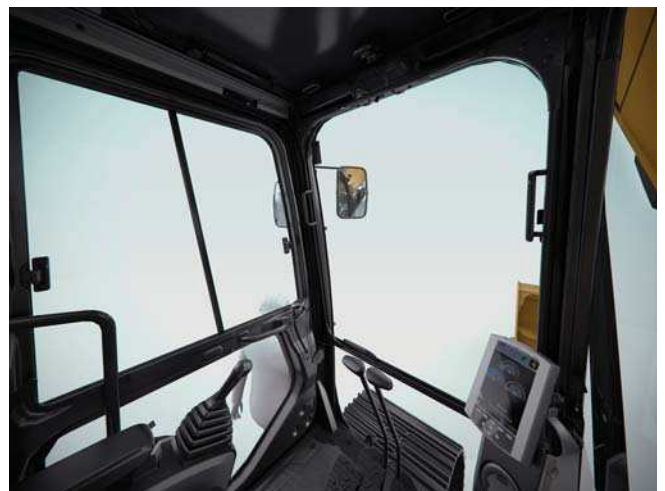
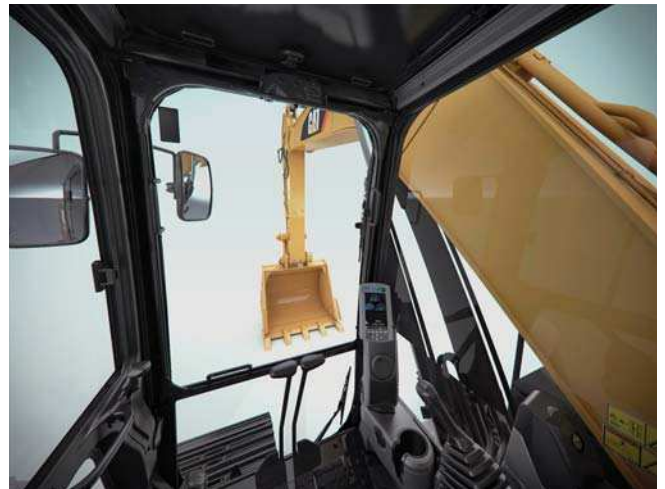
The right and left joystick consoles can be adjusted to improve your comfort and productivity during the course of a day. Also, the right joystick features a button that will reduce engine speed when you are not working to help save fuel. Touch it once and speed reduces; touch it again and speed increases for normal operation.

A Helpful Monitor

The LCD monitor is easy to see and navigate. Programmable in up to 44 languages to meet today's diverse workforce, the monitor clearly displays critical information you need to operate efficiently and effectively. Plus it projects the image from the standard rearview camera to help you see what's going on around you so you can stay safely focused on the job at hand.

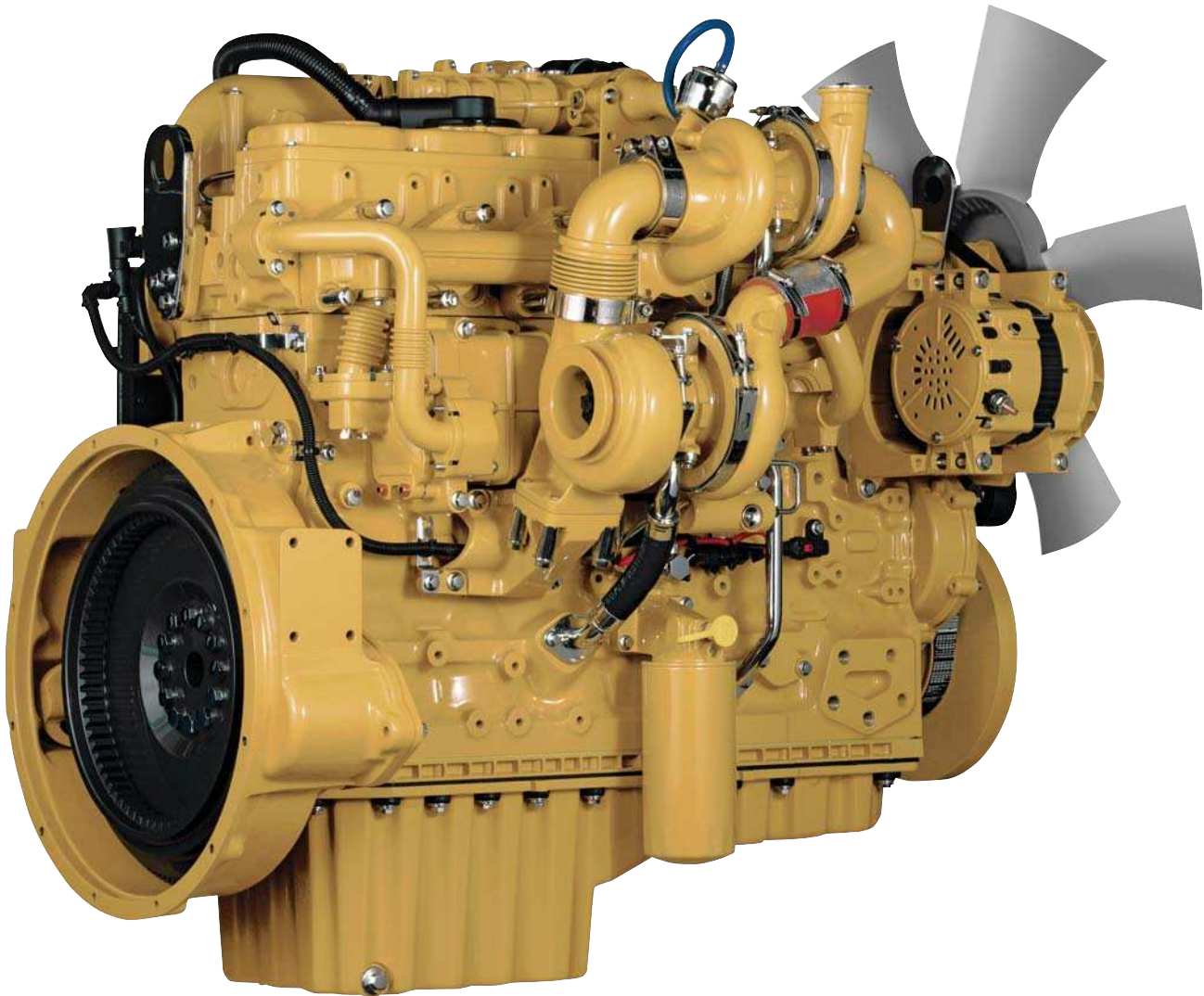
Ample Storage & Auxiliary Power

Storage spaces are located in the front, rear, and side consoles of the cab. A drink holder accommodates a large mug with handle, and a shelf behind the seat stores large lunch or toolboxes. Two 12-volt power supply sockets are conveniently located near the key storage areas for charging your electronic devices like an MP3 player, a cell phone, or a tablet.



Engine

Powerful and fuel efficient to meet your expectations



Proven Technology

Every Tier 4 Final ACERT engine is equipped with a combination of proven electronic, fuel, air, and aftertreatment components. Applying these time-tested technologies lets us meet your high expectations for productivity, fuel efficiency, reliability, and service life. Following are the results you can expect:

- **Improved fluid efficiency of up to 5%** over Tier 4 Interim products, including Diesel Exhaust Fluid (DEF) consumption.
- **High performance** across a variety of applications.
- **Enhanced reliability** through commonality and simplicity of design.
- **Maximized uptime and reduced cost** with world-class Cat dealer support.
- **Minimized impact** on emission systems – with no operator interaction required.
- **Durability** with long service life.
- **Better fuel economy** with minimized maintenance costs.
- **Same great power** and response.

More Powerful, Reliable Engine Electronics

Cat Tier 4 Final engine electronics are more powerful and robust than ever. Features like an over-foam wiring harness enhance your experience and increase quality and reliability through the most demanding applications.

Next Generation Fuel Systems

Injection timing precisely controls the fuel injection process, which provides more control of combustion for the cleanest, most efficient fuel burn. To maximize your value, Caterpillar engineers specified fuel systems based on the power and performance demands for each engine. The high-pressure common rail fuel system with full electronic injection improves precision and control, reducing soot and boosting the engine's performance.

Innovative Air Management

Cat Tier 4 Final engines feature innovative air management systems that optimize airflow and enhance power, efficiency, and reliability. A range of simple, reliable turbocharging solutions based on engine size and application allows us to match turbo performance to rated output for high productivity, excellent fuel efficiency, long life, and low operating costs for you.

Cat NO_x Reduction System

The Cat NO_x Reduction System captures and cools a small quantity of exhaust gas and then routes it back into the combustion chamber to drive down temperatures and reduce NO_x emissions. The result of more than a decade of Caterpillar engineering research into this technology is the most reliable system of its type

Aftertreatment Technologies

Caterpillar designed Tier 4 Interim products with Tier 4 Final standards in mind. By planning ahead, we minimized design changes to deliver the reliability and performance you demand. The aftertreatment solution utilized for Tier 4 Final products is the next evolutionary step for Cat engines with ACERT Technology. To meet the additional 80% reduction in NO_x emissions required by Tier 4 Final emission standards, Caterpillar engineers only needed to add one new system to the already proven aftertreatment solution in use, Selective Catalytic Reduction (SCR).

Diesel Exhaust Fluid (DEF)

Cat engines equipped with an SCR system inject DEF into the exhaust to reduce NO_x emissions. DEF is a precisely mixed solution of 32.5% high purity chemical grade urea and 67.5% de-ionized water. DEF used in Cat SCR systems must meet the requirements outlined in the International Organization for Standardization (ISO) standard 22241-1. ISO 22241-1 requirements are met by many brands of DEF, including those that carry the AdBlue or API certifications.

An Emissions Solution That Works

The Cat C7.1 ACERT engine meets Tier 4 Final emission standards, and it does so without interrupting your job process. Simply turn the engine on and go to work. It will look for opportunities in your work cycle to regenerate itself, and it will give you plenty of power for the task at hand – all to help keep your owning and operating costs to an absolute minimum.

Fuel Savers That Add Up

The 330F consumes less fuel than the previous series model, and the automatic engine speed control contributes by lowering rpm when the machine doesn't need it for work. Automatic engine idle shutdown turns the engine off when it's been idling for more than a specified amount of time that you can set through the monitor. Plus you have a choice of three power modes – high power, standard power, and eco mode. Simply change between modes through the console switch panel to meet the work needs in front of you. Collectively, all of these benefits add up to reduced fuel consumption, reduced exhaust and sound emissions, reduced repair and maintenance costs, and increased engine life for you.

A Cool Design For Any Temperature

A side-by-side cooling system allows you to put the machine to work in extremely hot and cold conditions. The system is completely separated from the engine compartment to reduce noise and heat. Plus it features easy-to-clean cores and an efficient variable-speed fan.

Biodiesel Not A Problem

The C7.1 ACERT engine can run on up to B20 biodiesel that meets ASTM 6751 standards – all to give you more potential fuel-saving flexibility.



A Powerful, Efficient Design

When it comes to moving heavy material quickly and efficiently, you need hydraulic horsepower – the type of ground-breaking power the 330F can deliver. Major hydraulic components like pumps and valves are located close together so shorter tubes and lines can be used. This design leads to less friction loss, reduced pressure drops, and more power to the ground for the work you need to get done.

Hydraulics

Power to move your material with speed and precision

Control Like No Other

Controllability is one of the main attributes of Cat excavators, and one of the key contributors to this is the main control valve. The valve opens slowly when your range of joystick lever movement is small and opens rapidly when movement is high. It puts flow where you need it when you need it, which leads to smoother operation, greater efficiency, and lower fuel consumption.

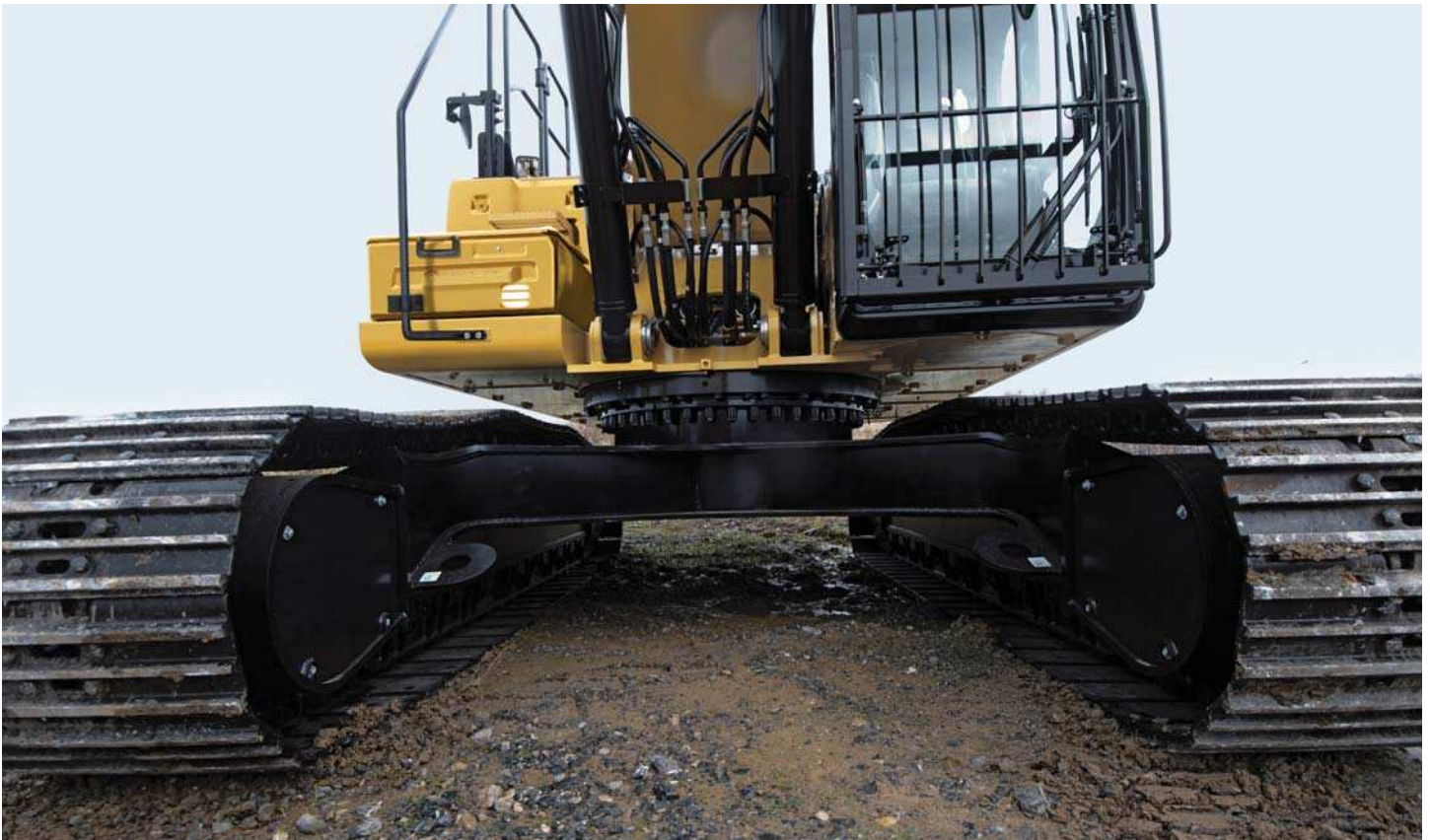
Auxiliary Hydraulics For Added Versatility

Auxiliary hydraulics give you greater tool versatility so you can take on more work with just one machine, and there are several options from which you can choose. A quick coupler circuit, for example, will allow you to switch from one tool to another in a matter of minutes – all from the comfort and convenience of the cab.



Boom & Stick Oil Re-Circulation For Added Efficiency

The 330F regenerates the flow of oil from the head end of the boom and stick cylinders to the rod end of the boom and stick cylinders during the work cycle to save energy and improve fuel efficiency. It's optimized for any dial speed setting you select, which results in less pressure loss for higher controllability, more productivity, and lower operating costs for you.



Structures & Undercarriage

Made to work in your tough applications

Robust Frame

The 330F is a well-built machine designed to give you a very long service life. The upper frame has mountings made specifically to support the heavy-duty cab; it is also reinforced around key areas that take on stress like the boom foot and skirt. Massive bolts are used to attach the track frames to the body, and additional bolts are used to increase the machine's digging force, which leads to more productivity for you.

Durable Undercarriage

The 330F undercarriage contributes significantly to its outstanding stability and durability. Track shoes, links, rollers, idlers, and final drives are all built with long-lasting, high-tensile-strength steel. Cat Grease Lubricated Track 2 (GLT2) track link protects moving parts by keeping water, debris, and dust out and grease sealed in, which delivers longer wear life and reduced noise when traveling. Optional guide guards help maintain track alignment to improve the machine's overall performance – whether you're traveling on a flat, heavy bed of rock or a steep, wet field of mud.

Counterweight Options

Two counterweight options – 5.8 mt (6.3 t) and 6.75 mt (7.4 t) – are available. Both are built with thick steel plates and reinforced fabrications to make them less susceptible to damage, and both have curved surfaces that match the machine's sleek, smooth appearance along with integrated housings to help protect the standard rearview camera.



Front Linkage

Options to take on your far-reaching and up-close tasks

Booms & Sticks

The 330F is offered with a range of booms and sticks. Each is built with internal baffle plates for added durability, and each undergoes ultrasound inspection to ensure weld quality and reliability. Large box-section structures with thick, multi-plate fabrications, castings, and forgings are used in high-stress areas such as the boom nose, boom foot, boom cylinder, and stick foot to improve durability. The boom nose pin is a captured flag design for enhanced durability.

Two Types Available

There are two basic boom options available to meet your work needs: STD and SLR.

STD

This type of boom is best used for reach applications where conditions are optimal such as excavating basements, trenching for utility lines, and working in sewer applications.

SLR = Super Long Reach

This configuration offers reaches to 60 feet. It is perfectly suited for forming slopes and cleaning settlement tanks and ponds.

Sticks are matched to the boom you choose. Longer sticks are better when you need to dig deep or load trucks. Shorter sticks provide greater breakout force and increase your productivity when using hydromechanical work tools.

Talk to your Cat dealer to pick the best front linkage for your line of work.

Integrated Technologies

Monitor, manage, and enhance your job site operations



Cat Connect

The smart use of technology and services will improve your job site efficiency. In fact, using data from technology equipped machines gives you more information and insight into your equipment and operations than ever before.

Cat Connect Technology for Excavators include:

Cat LINK

Cat LINK Technology wirelessly connects you to your equipment, giving you valuable insight into how your machine or fleet is performing. The system tracks location, hours, fuel usage, productivity, idle time, and diagnostic codes through the online VisionLink® interface so you can make timely, fact-based decisions to maximize efficiency, improve productivity, and lower operating costs.

Cat GRADE

Cat GRADE with Depth and Slope combines digital design data and in-cab guidance to help you work more productively and accurately with less rework. Real-time bucket tip positioning and cut and fill data on the standard cab monitor guide you to grade, saving money on fuel and materials.

Attachments

Tools to make you productive and profitable



Get The Most Out Of One Machine

You can easily expand the performance of your machine by utilizing any of the variety of attachments offered by Cat Work Tools.

Change Jobs Quickly

A quick coupler brings the ability to quickly change attachments and switch from job to job. The Cat Pin Grabber coupler is the secure way to decrease downtime and increase job site flexibility and overall productivity.

Dig, Finish, Load & Compact

A wide range of buckets dig everything from top soil to harsh, abrasive material. For finishing and grading work, compact and shallow ditch cleaning buckets fit the need. A Cat compactor prepares the area for the next phase of construction.

Mining, Demolition & Scrap

A hydraulic hammer equips your machine for breaking rock in quarries and preparing trenches on construction sites. Taking down bridge pillars and heavily reinforced concrete is no problem. Multi-processor, pulverizer, and shear attachments take your machine into structure demolition jobs and process the debris for reuse and recycle.

Move & Handle

Add a thumb and you have the ability to move and handle brush, rocks, and debris. For constant material handling, a grapple is your solution. Choose from three different styles for picking, sorting, and loading trash, demolition debris, or recyclables.

Set Up Your Machine For Profitability

Your Cat dealer can install hydraulic kits to properly operate all Cat Work Tool attachments – maximizing the machine's uptime and your profits. All Cat Work Tool attachments are supported by the same Cat dealer network as your Cat machine.

GRAB, SORT, LOAD



Pro Series Hydraulic Thumbs



Stiff Link Thumbs



Demolition & Sorting Grapple



Contractors' Grapples



Trash Grapples

SWAP TOOLS



Pin Grabber Coupler

DIG & PACK



Ditch Cleaning and Tilt Buckets



General Duty Buckets



Heavy Duty Buckets



Severe Duty Buckets



Extreme Duty Buckets



Vibratory Plate Compactors

CUT, CRUSH, BREAK & RIP



Multi-Processors



Scrap & Demolition Shears



Secondary Pulverizers



Hydraulic Hammers



Rippers



Ground-Level Access

You can reach most routine maintenance items like fluid taps and grease points from the safety and convenience of ground level. Not only do compartments feature wide service doors designed to help prevent debris entry, but they also securely latch in place to help make your service work simpler.

Serviceability

Designed to make your maintenance quick and easy



Other Service Benefits

The fuel tank's drain cock makes it easy and simple for you to remove water and sediment during routine maintenance. Plus an integrated fuel level indicator pops up to help you reduce the possibility of fuel tank overfilling.

A Cool Design

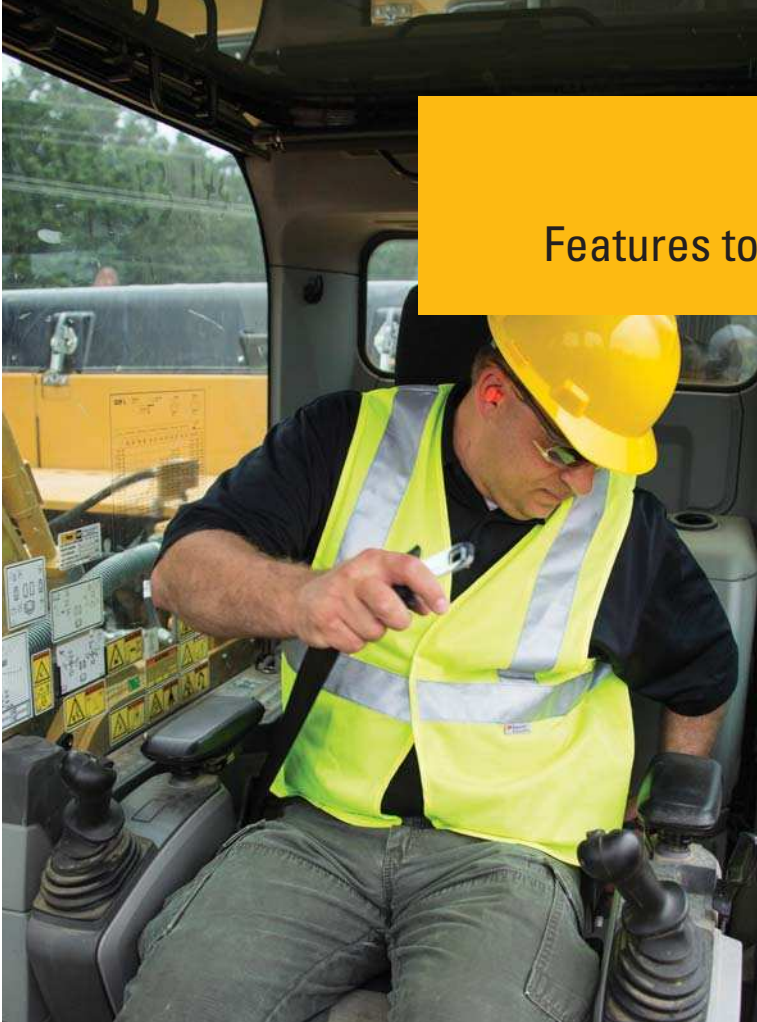
The high-ambient cooling system features a fuel-saving variable-speed fan and a side-by-side-mounted radiator and oil and air coolers for easy cleaning. Wider clearance between the two make blowing off debris easy for you, which can help improve your machine's reliability and performance.

A Fresh Idea

When you select ventilation inside the cab, outside air enters through the fresh air filter. The filter is conveniently located on the side of the cab to make it easy to reach and replace, and it is protected by a lockable door that can be opened with the engine key.

Safety

Features to help protect you day in and day out



A Safe, Quiet Cab

The ROPS cab provides you with a safe working environment when properly seated and belted. It also contributes to your comfort because it's attached to a reinforced frame with special viscous mounts that limit vibration and unnecessary sound. Add in special roof lining and sealing and you have a cab that's as quiet inside as any of today's top pickup trucks.

Secure Contact Points

Multiple large steps get you into the cab as well as a leg up to the compartments. Extended hand and guard rails allow you to safely climb to the upper deck. Anti-skid plates reduce your slipping hazards in all types of weather conditions, and they can be removed for cleaning.

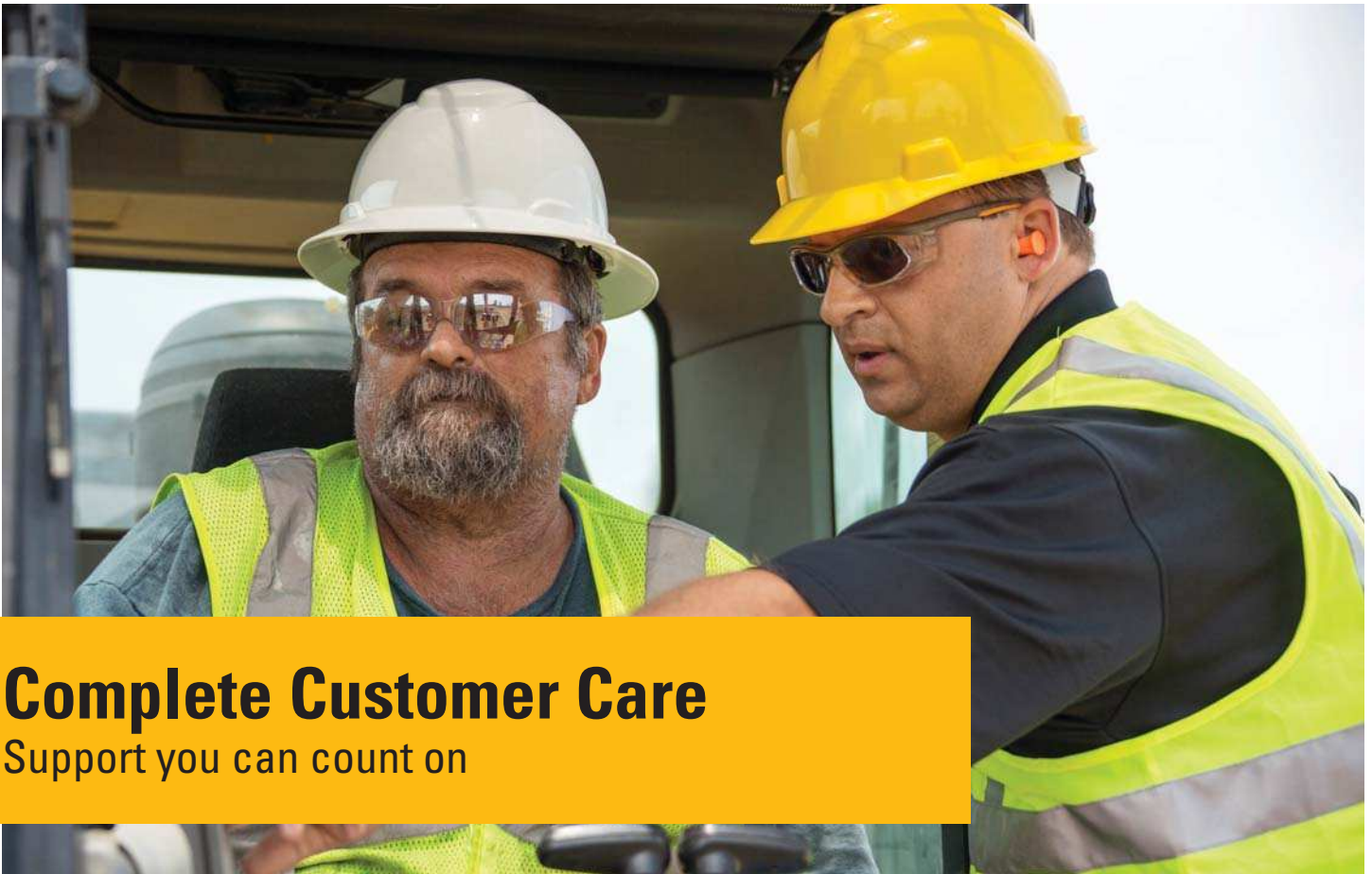
Great Views

Ample glass gives you excellent visibility out front and to the side, and the standard rearview camera gives you a clear field of view behind the machine through the cab monitor. The available split-configuration windshield features an upper window with handles that make it easy to slide and store above you and a lower window that can be removed and stored on the inside wall of the cab. The large skylight also serves as an emergency exit and provides you with enhanced overhead visibility.

Smart Lighting

Halogen lights provide plenty of illumination, and the cab and boom lights can be programmed to stay on for up to 90 seconds after the engine has been turned off to help you safely exit the machine. Optional High Intensity Discharge (HID) lights are available for enhanced night-time visibility.





Complete Customer Care

Support you can count on

Worldwide Parts Availability

Cat dealers utilize a worldwide parts network to maximize your machines' uptime. Plus they can help you save money with Cat remanufactured components.

Advice You Can Trust

What are the job requirements and machine attachments? What production is needed? Your Cat dealer can provide recommendations to help you make the right machine choices.

Financial Options Just For You

Consider financing options and day-to-day operating costs. Look at dealer services that can be included in the machine's cost to yield lower owning and operating costs over time.

Support Agreements To Fit Your Needs

Cat dealers offer a variety of customer support agreements and work with you to develop a plan to meet your specific needs. These plans can cover the entire machine, including attachments, to help protect your investment.

Operating Techniques To Boost Your Profits

Improving operating techniques can boost your profits. Your Cat dealer has videos, literature, and other ideas to help you increase productivity. Caterpillar also offers simulators and certified operator training to help maximize the return on your investment.

What's Best For You Today... And Tomorrow

Repair, rebuild, or replace? Your Cat dealer can help you evaluate the cost involved so you can make the best choice for your business.

Sustainability

Generations ahead in every way



- The C7.1 ACERT engine meets Tier 4 Final emission standards.
- The 330F performs the same amount of work while burning less fuel than the previous E Series model, which means more efficiency, less resources consumed, and fewer CO₂ emissions.
- The 330F has the flexibility of running on either ultra-low-sulfur diesel (ULSD) fuel with 15 ppm of sulfur or less or biodiesel (up to B20) fuel blended with ULSD.
- A ground-level overfill indicator rises when the tank is full to help the operator avoid spilling.
- The QuickEvac™ option ensures fast, easy, and secure changing of engine and hydraulic oil.
- The 330F is built to be rebuilt with major structures and components capable of being remanufactured to reduce waste and replacement costs.
- An engine oil filter eliminates the need for painted metal cans and aluminum top plates. The cartridge-style spin-on housing enables the internal filter to be separated and replaced; the used internal element can be incinerated to help reduce waste.
- The 330F is an efficient, productive machine that's designed to conserve our natural resources for generations ahead.

330F Hydraulic Excavator Specifications

Engine

Engine Model	Cat C7.1 ACERT	
Net Power – SAE J1349/ISO 9249	175 kW	239 hp
Gross Power – SAE J1995	178 kW	242 hp
Bore	105 mm	4.13 in
Stroke	135 mm	5.31 in
Displacement	7.01 L	428 in ³

Weights

Minimum Operating Weight*	29 560 kg	65,169 lb
Maximum Operating Weight**	31 707 kg	69,902 lb

*6.15 m (20'2") Reach Boom, R3.2CB2 (10'6") Stick, 600 mm (24") SG Shoes, 5.8 mt (6.3 t) Counterweight, 1.3 m³ (1.70 yd³) Bucket.

**10.2 m (33'6") SLR Boom, 7.85 m (25'9") Stick, 800 mm (31") TG Shoes, 6.75 mt (7.4 t) Counterweight, 0.53 m³ (0.69 yd³) Bucket.

Hydraulic System

Main System – Maximum Flow (Total)	493 L/min	130 gal/min
Maximum Pressure – Equipment Heavy Lift	38 000 kPa	5,511 psi
Maximum Pressure – Equipment Normal	35 000 kPa	5,076 psi
Maximum Pressure – Travel	37 000 kPa	5,366 psi
Maximum Pressure – Swing	27 400 kPa	3,974 psi
Pilot System – Maximum Flow	23 L/min	6.1 gal/min
Pilot System – Maximum Pressure	4100 kPa	595 psi
Boom Cylinder – Bore	140 mm	6 in
Boom Cylinder – Stroke	1407 mm	55 in
Stick Cylinder – Bore	150 mm	6 in
Stick Cylinder – Stroke	1646 mm	65 in
CB2 Bucket Cylinder – Bore	150 mm	5.9 in
CB2 Bucket Cylinder – Stroke	1151 mm	45.3 in

Drive

Maximum Travel Speed	5.1 km/h	3.2 mph
Maximum Drawbar Pull	247 kN	55,528 lbf

Swing Mechanism

Swing Speed	9.6 rpm	
Swing Torque	82.2 kN·m	60,628 lbf·ft

Service Refill Capacities

Fuel Tank Capacity	520 L	137.4 gal
Cooling System	30 L	7.9 gal
Engine Oil (with filter)	24 L	6.3 gal
Swing Drive (each)	9 L	2.3 gal
Final Drive (each)	6 L	1.6 gal
Hydraulic System (including tank)	310 L	81.9 gal
Hydraulic Tank	175 L	46.2 gal
DEF Tank	41 L	10.8 gal

Track

Number of Shoes (each side)	
Long Undercarriage	50
Number of Track Rollers (each side)	
Long Undercarriage	9
Number of Carrier Rollers (each side)	
Long Undercarriage	2

Sound Performance

ISO 6396	
Operator Noise (Closed)	72 dB(A)
ISO 6395	
Spectator Noise	105 dB(A)

- When properly installed and maintained, the cab offered by Caterpillar, when tested with doors and windows closed according to ANSI/SAE J1166 OCT98, meets OSHA and MSHA requirements for operator sound exposure limits in effect at time of manufacture.
- Hearing protection may be needed when operating with an open operator station and cab (when not properly maintained or doors/windows open) for extended periods or in noisy environment.

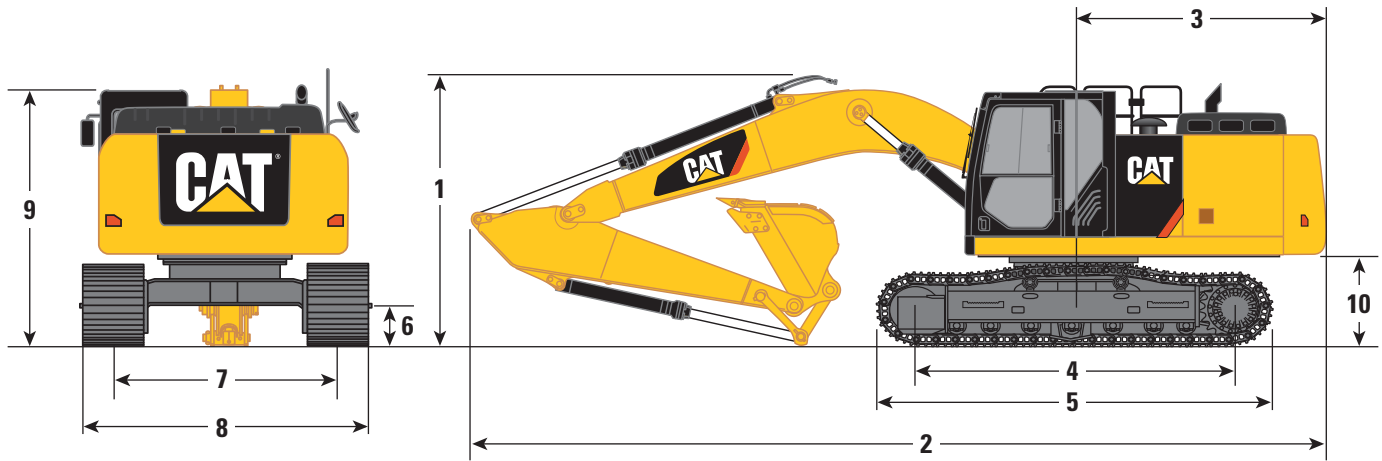
Standards

Brakes	ISO 10265 2008
Cab/FOGS	ISO 10262 1998

330F Hydraulic Excavator Specifications

Dimensions

All dimensions are approximate.



Stick Size	Reach Boom 6.15 m (20'2")		Super Long Reach Boom 10.2 m (33'6")
	R3.75CB2 (12'4")	R3.2CB2 (10'6")	Super Long Reach 7.85 m (25'9")
	mm (ft)	mm (ft)	mm (ft)
1 Shipping Height*	3680 (12'1")	3370 (11'1")	3230 (10'7")
2 Shipping Length	10 380 (34'1")	10 390 (34'1")	14 440 (47'5")
3 Tail Swing Radius	3090 (10'2")	3090 (10'2")	3090 (10'2")
4 Length to Center of Rollers			
Long Undercarriage	3990 (13'1")	3990 (13'1")	3990 (13'1")
5 Track Length			
Long Undercarriage	4860 (15'11")	4860 (15'11")	4860 (15'11")
6 Ground Clearance			
Long Undercarriage	490 (1'7")	490 (1'7")	490 (1'7")
7 Track Gauge			
Long Undercarriage	2590 (8'6")	2590 (8'6")	2590 (8'6")
8 Transport Width			
Long Undercarriage – 600 mm (24") Shoes	3190 (10'6")	3190 (10'6")	3190 (10'6")
Long Undercarriage – 800 mm (32") Shoes	3390 (11'1")	3390 (11'1")	3390 (11'1")
9 Cab Height with Top Guard	3240 (10'8")	3240 (10'8")	3240 (10'8")
10 Counterweight Clearance**	1110 (3'8")	1110 (3'8")	1110 (3'8")
Bucket Type	HD Bucket	HD Bucket	GD Bucket
Capacity	1.33 m ³ (1.74 yd ³)	1.54 m ³ (2.02 yd ³)	0.53 m ³ (0.69 yd ³)
Tip Radius	1650 mm (5'5")	1650 mm (5'5")	1225 mm (4'0")

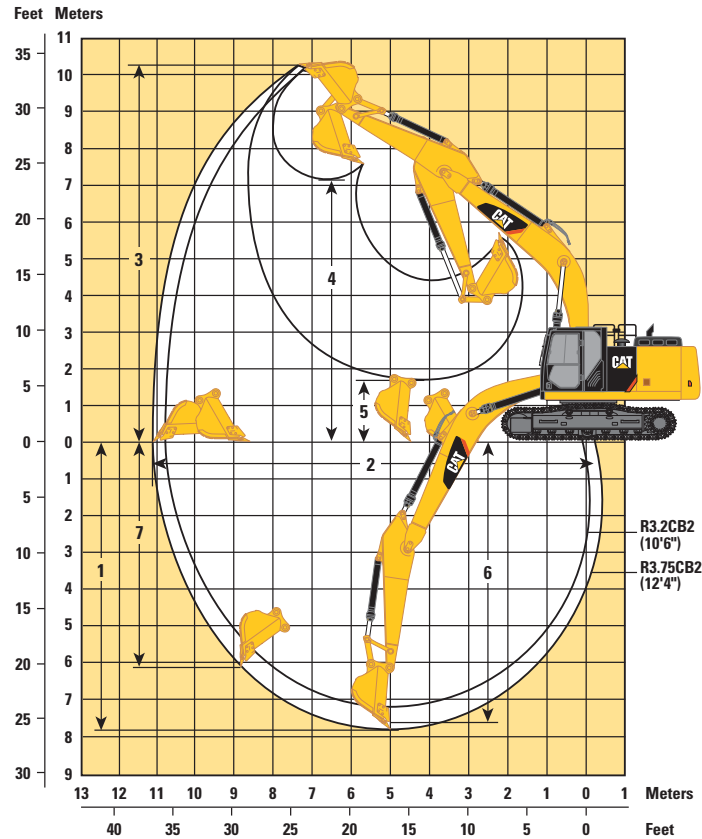
*Including shoe lug height.

**Without shoe lug height.

330F Hydraulic Excavator Specifications

Working Ranges

All dimensions are approximate.

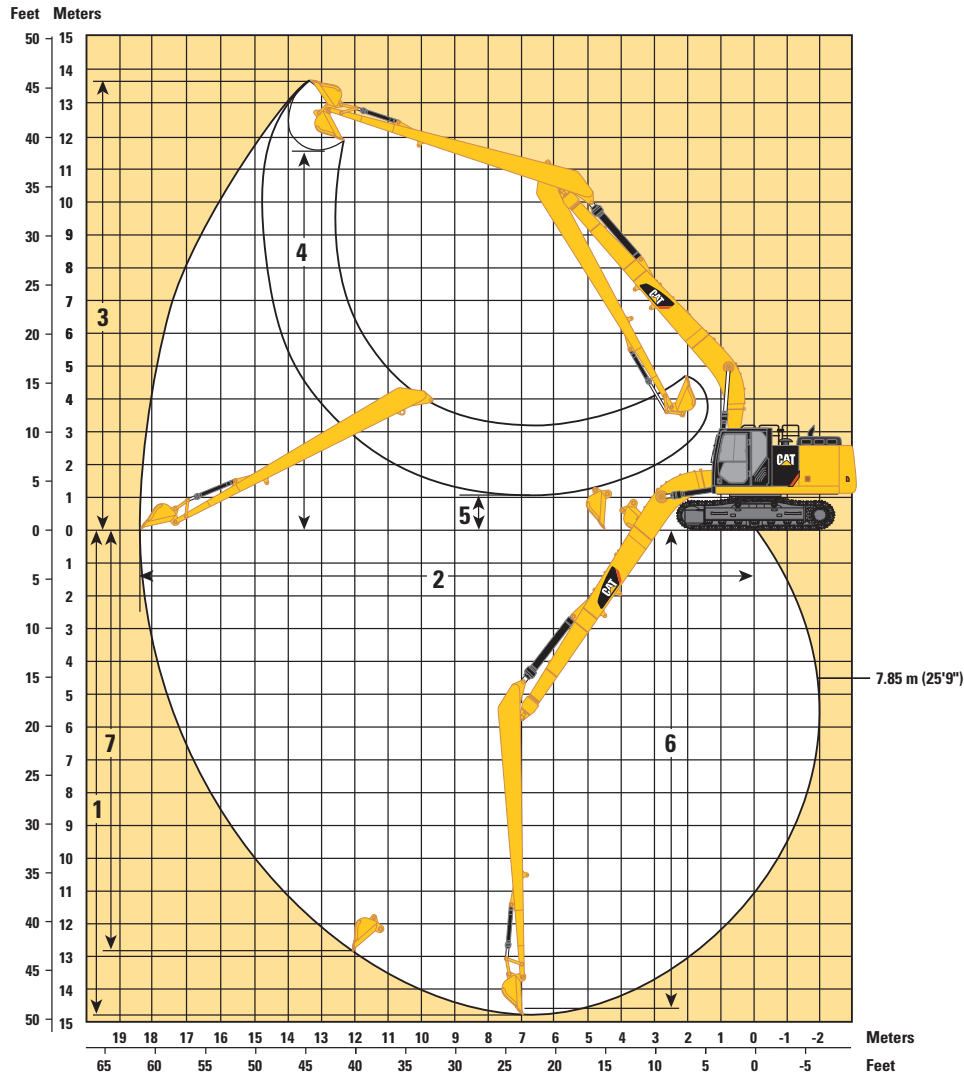


Stick Size	Reach Boom 6.15 m (20'2")	
	R3.75CB2 (12'4")	R3.2CB2 (10'6")
	mm (ft)	mm (ft)
1 Maximum Digging Depth	7800 (25'6")	7250 (23'9")
2 Maximum Reach at Ground Level	11 180 (36'7")	10 680 (35'0")
3 Maximum Cutting Height	10 190 (33'4")	10 010 (32'10")
4 Maximum Loading Height	7140 (23'4")	6950 (22'10")
5 Minimum Loading Height	1740 (5'7")	2290 (7'6")
6 Maximum Depth Cut for 2440 mm (8'0") Level Bottom	7660 (25'1")	7090 (23'3")
7 Maximum Vertical Wall Digging Depth	6420 (21'1")	5980 (19'7")
Bucket Type	HD Bucket	HD Bucket
Capacity	1.33 m ³ (1.74 yd ³)	1.54 m ³ (2.02 yd ³)
Tip Radius	1650 mm (5'5")	1650 mm (5'5")

330F Hydraulic Excavator Specifications

Working Ranges

All dimensions are approximate.



	Super Long Reach Boom 10.2 m (33'6")
Stick Size	Super Long Reach Stick 7.85 m (25'9")
	mm (ft)
1 Maximum Digging Depth	14 750 (48'5")
2 Maximum Reach at Ground Level	18 420 (60'5")
3 Maximum Cutting Height	13 620 (44'8")
4 Maximum Loading Height	11 420 (37'6")
5 Minimum Loading Height	1170 (3'10")
6 Maximum Depth Cut for 2440 mm (8'0") Level Bottom	14 650 (48'1")
7 Maximum Vertical Wall Digging Depth	12 690 (41'8")
Bucket Type	GD Bucket
Capacity	0.53 m ³ (0.69 yd ³)
Tip Radius	1225 mm (4'0")

330F Hydraulic Excavator Specifications

Operating Weight and Ground Pressure

	800 mm (32") Triple Grouser Shoes		600 mm (24") Single Grouser Shoes	
	kg (lb)	kPa (psi)	kg (lb)	kPa (psi)
Long Undercarriage				
Reach Boom – 6.15 m (20'2")				
R3.75CB2 (12'4")	30 412 (67,047)	43.4 (6.3)	29 721 (65,524)	56.5 (8.2)
R3.2CB2 (10'6")	30 335 (66,877)	43.3 (6.3)	29 644 (65,354)	56.4 (8.2)
Super Long Reach Boom – 10.2 m (33'6")				
Super Long Reach – 7.85 m (25'9")	31 639 (69,752)	45.1 (6.5)	–	–

Major Component Weights

	kg	lb
Base Machine (with boom cylinder, without counterweight, front linkage and track)		
Long Undercarriage	8656	19,083
Counterweight		
5.8 mt (6.3 t)	5800	12,787
6.75 mt (7.4 t) SLR model	6750	14,880
Boom (includes lines, pins and stick cylinder)		
Reach Boom – 6.15 m (20'2")	2242	4,943
Super Long Reach – 10.2 m (33'6")	3265	7,198
Stick (includes lines, pins and bucket cylinder)		
R3.75CB2 (12'4")	1342	2,959
R3.2CB2 (10'6")	1181	2,604
Super Long Reach	1512	3,333
Bucket Linkage		
CB2 with Lifting Eye	294	648
A with Lifting Eye	99	218
Track Shoes (Long/per two tracks)		
600 mm (24") Single Grouser	3855	8,499
800 mm (32") Triple Grouser	4546	10,022
Buckets		
CB1 1200HD – 1.33 m ³ (1.74 yd ³)	1047	2,309
CB1 1350HD – 1.54 m ³ (2.02 yd ³)	1131	2,493
A1200DC – 0.57 m ³ (0.75 yd ³)	326	718
A905GD – 0.53 m ³ (0.69 yd ³)	394	869

All weights are rounded up to nearest 10 kg and lb except for buckets. Kg and lb were rounded up separately so some of the kg and lb do not match.

Base machine includes 75 kg (165 lb) operator weight, 90% fuel weight, and undercarriage with center guard.

700 mm (28") triple grouser heavy duty track shoe is not used in the calculation for operating weight and ground pressure.

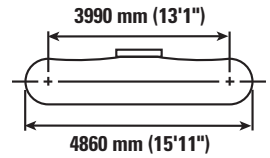
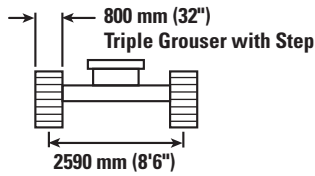
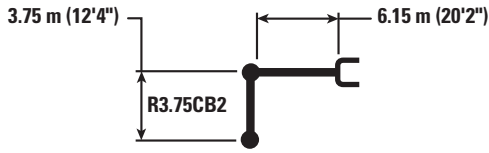
330F Hydraulic Excavator Specifications

Bucket and Stick Forces

Stick Size	Reach Boom 6.15 m (20'2")		Super Long Reach Boom 10.2 m (33'6")
	CB-Family Bucket		A-Family Bucket
	R3.75CB2 (12'4")	R3.2CB2 (10'6")	Super Long Reach 7.85 m (25'9")
	kN (lbf)	kN (lbf)	kN (lbf)
General Duty			
Bucket Digging Force (SAE)	–	161 (36,200)	–
Stick Digging Force (SAE)	–	123 (27,700)	–
Heavy Duty			
Bucket Digging Force (SAE)	158 (35,519)	158 (35,500)	–
Stick Digging Force (SAE)	111 (24,953)	123 (27,700)	–
Severe Duty			
Bucket Digging Force (SAE)	–	158 (35,500)	–
Stick Digging Force (SAE)	–	123 (27,700)	–

330F Hydraulic Excavator Specifications

HD Reach Boom Lift Capacities – Counterweight: 5.8 mt (6.3 t) – without Bucket



		1.5 m/5.0 ft		3.0 m/10.0 ft		4.5 m/15.0 ft		6.0 m/20.0 ft		7.5 m/25.0 ft		9.0 m/30.0 ft		m ft		
7.5 m	kg									*5950	*5950			*4750	*4750	7.89
25.0 ft	lb									*11,950	*11,950			*10,500	*10,500	25.60
6.0 m	kg									*7150	6150			*4550	*4550	8.78
20.0 ft	lb									*15,550	13,250			*10,050	*10,050	28.64
4.5 m	kg									*7700	6000	*6000	4500	*4550	4200	9.34
15.0 ft	lb							*18,100	*18,100	*16,800	12,950	*11,850	9,600	*9,950	9,300	30.57
3.0 m	kg					*12 800	12 450	*9950	8100	*8550	5800	6750	4400	*4650	3950	9.63
10.0 ft	lb					*27,500	26,800	*21,500	17,400	*18,550	12,500	14,500	9,400	*10,200	8,650	31.58
1.5 m	kg					*15 850	11 600	*11 550	7650	8750	5600	6650	4300	*4900	3850	9.68
5.0 ft	lb					*34,150	24,950	*25,000	16,500	18,750	12,000	14,250	9,200	*10,800	8,450	31.77
0 m	kg			*6500	*6500	*17 650	11 100	11 950	7350	8550	5400	6550	4200	*5350	3900	9.50
0 ft	lb			*14,900	*14,900	*38,150	23,900	25,700	15,850	18,350	11,650	14,050	9,000	*11,800	8,550	31.15
-1.5 m	kg	*6400	*6400	*10 250	*10 250	*18 100	10 900	11 750	7200	8400	5300	6500	4150	*6150	4100	9.06
-5.0 ft	lb	*14,250	*14,250	*23,200	*23,200	*39,250	23,450	25,300	15,500	18,100	11,400			*13,550	9,050	29.68
-3.0 m	kg	*10 650	*10 650	*15 300	*15 300	*17 450	10 900	11 750	7200	8400	5300			7300	4650	8.32
-10.0 ft	lb	*23,850	*23,850	*34,750	*34,750	*37,800	23,500	25,250	15,450	18,100	11,400			16,100	10,250	27.20
-4.5 m	kg	*15 850	*15 850	*21 850	*21 850	*15 550	11 100	*11 650	7300					*9000	5750	7.20
-15.0 ft	lb			*47,050	*47,050	*33,450	23,850	*24,900	15,700					*19,850	12,800	23.41
-6.0 m	kg					*11 350	*11 350							*8850	8700	5.45
-20.0 ft	lb					*23,650	*23,650							*21,350	*21,350	16.32



ISO 10567



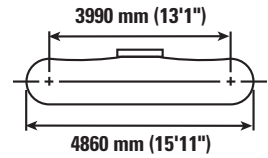
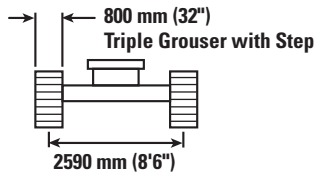
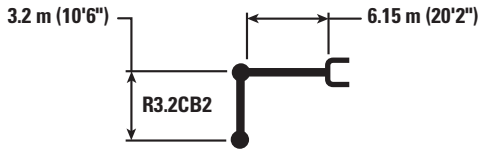
*Indicates that the load is limited by hydraulic lifting capacity rather than tipping load. The above loads are in compliance with hydraulic excavator lift capacity standard ISO 10567:2007. They do not exceed 87% of hydraulic lifting capacity or 75% of tipping load. Weight of all lifting accessories must be deducted from the above lifting capacities. Lifting capacities are based on the machine standing on a firm, uniform supporting surface. The use of a work tool attachment point to handle/lift objects, could affect the machine lift performance.

Lift capacity stays with ±5% for all available track shoes.

Always refer to the appropriate Operation and Maintenance Manual for specific product information.

330F Hydraulic Excavator Specifications

HD Reach Boom Lift Capacities – Counterweight: 5.8 mt (6.3 t) – without Bucket



		1.5 m/5.0 ft		3.0 m/10.0 ft		4.5 m/15.0 ft		6.0 m/20.0 ft		7.5 m/25.0 ft		9.0 m/30.0 ft		m ft		
7.5 m	kg													*5600	*5600	7.27
25.0 ft	lb													*12,400	*12,400	23.54
6.0 m	kg									*7850	6200			*5350	5300	8.23
20.0 ft	lb									*16,700	13,300			*11,750	*11,750	26.83
4.5 m	kg						*9200	8500	*8350	6100				*5300	4700	8.82
15.0 ft	lb						*19,950	18,350	*18,200	13,050				*11,650	10,350	28.88
3.0 m	kg					*14 150	12 400	*10 750	8150	9050	5900	*6500	4500	*5450	4400	9.13
10.0 ft	lb					*30,450	26,700	*23,250	17,550	19,400	12,650			*12,000	9,650	29.95
1.5 m	kg					*16 900	11 650	*12 200	7750	8800	5700	6750	4400	*5800	4250	9.19
5.0 ft	lb					*36,450	25,100	*26,400	16,750	18,950	12,250	*13,700	9,450	*12,700	9,350	30.15
0 m	kg					*18 150	11 300	12 100	7550	8650	5550			*6350	4350	8.99
0 ft	lb					*39,300	24,300	26,000	16,200	18,600	11,950			*14,000	9,550	29.50
-1.5 m	kg	*6750	*6750	*10 600	*10 600	*18 150	11 200	11 950	7400	8600	5500			7200	4650	8.52
-5.0 ft	lb	*15,050	*15,050	*24,050	*24,050	*39,350	24,100	25,700	15,950	18,450	11,800			15,800	10,250	27.93
-3.0 m	kg	*12 100	*12 100	*17 150	*17 150	*17 050	11 250	12 000	7450	8600	5500			8250	5300	7.74
-10.0 ft	lb	*27,150	*27,150	*38,900	*38,900	*36,900	24,250	25,750	16,000	18,600	11,900			18,300	11,750	25.28
-4.5 m	kg			*19 750	*19 750	*14 500	11 500	*10 750	7600					*9400	6850	6.51
-15.0 ft	lb			*42,500	*42,500	*31,150	24,750	*22,750	16,400					*20,700	15,300	21.13



ISO 10567



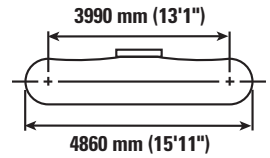
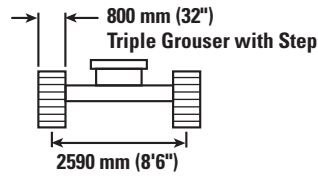
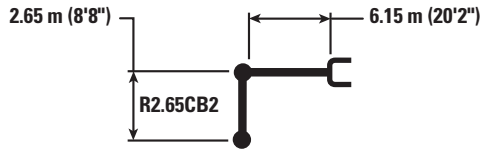
*Indicates that the load is limited by hydraulic lifting capacity rather than tipping load. The above loads are in compliance with hydraulic excavator lift capacity standard ISO 10567:2007. They do not exceed 87% of hydraulic lifting capacity or 75% of tipping load. Weight of all lifting accessories must be deducted from the above lifting capacities. Lifting capacities are based on the machine standing on a firm, uniform supporting surface. The use of a work tool attachment point to handle/lift objects, could affect the machine lift performance.



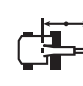

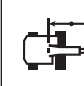

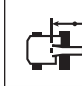

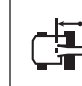

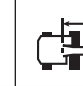
Lift capacity stays with ±5% for all available track shoes.

Always refer to the appropriate Operation and Maintenance Manual for specific product information.

330F Hydraulic Excavator Specifications

HD Reach Boom Lift Capacities – Counterweight: 5.8 mt (6.3 t) – without Bucket



		3.0 m/10.0 ft		4.5 m/15.0 ft		6.0 m/20.0 ft		7.5 m/25.0 ft				m ft
												
7.5 m 25.0 ft	kg lb					*19,150	18,950	*8350	6150	*7350	*7350	6.67 21.52
6.0 m 20.0 ft	kg lb					*19,450	18,800	*15,750	13,200	*6900	*15,250	5900 13,100 25.08
4.5 m 15.0 ft	kg lb			*12 250	*12 250	*10 000	8450	*8950	6050	*6850	5150	8.33 27.26
3.0 m 10.0 ft	kg lb			*15 450	12 200	*11 450	8100	9050	5900	*7000	4750	8.66 28.40
1.5 m 5.0 ft	kg lb			*16 500	11 600	12 350	7800	8850	5750	7100	4650	8.72 28.61
0 m 0 ft	kg lb			*17 550	11 350	12 150	7600	8700	5600	7300	4750	8.51 27.92
-1.5 m -5.0 ft	kg lb	*10 350	*10 350	*17 950	11 350	12 050	7500	8700	5600	7950	5150	8.01 26.26
-3.0 m -10.0 ft	kg lb	*19 400	*19 400	*16 400	11 450	12 150	7600			9350	6000	7.17 23.42
-4.5 m -15.0 ft	kg lb	*17 250	*17 250	*13 100	11 750					*9550	8150	5.83 18.85



ISO 10567



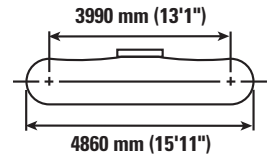
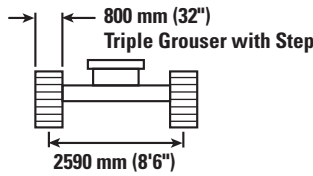
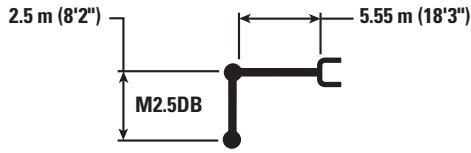
*Indicates that the load is limited by hydraulic lifting capacity rather than tipping load. The above loads are in compliance with hydraulic excavator lift capacity standard ISO 10567:2007. They do not exceed 87% of hydraulic lifting capacity or 75% of tipping load. Weight of all lifting accessories must be deducted from the above lifting capacities. Lifting capacities are based on the machine standing on a firm, uniform supporting surface. The use of a work tool attachment point to handle/lift objects, could affect the machine lift performance.



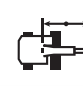

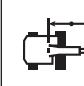

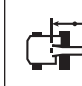

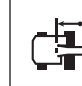

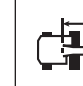
Lift capacity stays with ±5% for all available track shoes.

Always refer to the appropriate Operation and Maintenance Manual for specific product information.

330F Hydraulic Excavator Specifications

Mass Boom Lift Capacities – Counterweight: 5.8 mt (6.3 t) – without Bucket



		3.0 m/10.0 ft		4.5 m/15.0 ft		6.0 m/20.0 ft		7.5 m/25.0 ft				m ft
												
7.5 m 25.0 ft	kg lb									*8650 *19,250	*8650 *19,250	5.49 17.60
6.0 m 20.0 ft	kg lb					*9650 *21,200	8650 18,550			*8050 *17,750	7150 16,050	6.71 21.82
4.5 m 15.0 ft	kg lb			*12 250 *26,450	*12 250 *26,450	*10 400 *22,650	8400 18,100			*8000 *17,600	6000 13,300	7.43 24.31
3.0 m 10.0 ft	kg lb			*15 200 *32,700	12 350 26,600	*11 650 *25,300	8100 17,400	8950 19,250	5800 12,500	*8300 *18,300	5450 12,050	7.80 25.57
1.5 m 5.0 ft	kg lb			*17 550 *37,900	11 700 25,200	12 400 26,600	7750 16,700	8800 18,900	5650 12,200	8200 18,050	5300 11,650	7.87 25.81
0 m 0 ft	kg lb			*18 400 *39,800	11 400 24,500	12 150 26,100	7550 16,300	8700 18,700	5600 12,000	8500 18,700	5450 12,000	7.63 25.04
-1.5 m -5.0 ft	kg lb	*17 350 *39,450	*17 350 *39,450	*17 750 *38,450	11 350 24,400	12 100 26,000	7500 16,150			9450 20,900	6050 13,300	7.08 23.17
-3.0 m -10.0 ft	kg lb	*21 150 *45,750	*21 150 *45,750	*15 550 *33,500	11 500 24,750	*11 200 7650				*10 900 *24,000	7500 16,600	6.10 19.88



ISO 10567



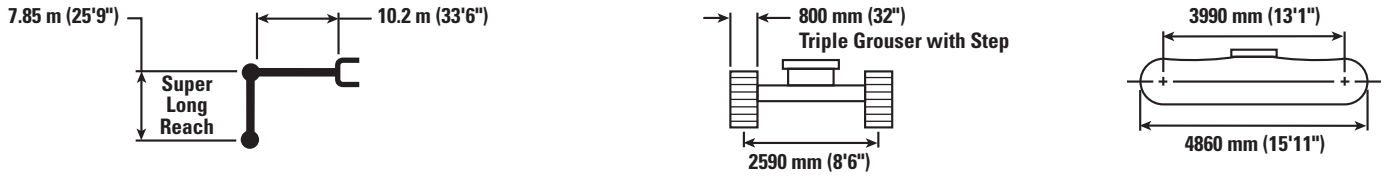
*Indicates that the load is limited by hydraulic lifting capacity rather than tipping load. The above loads are in compliance with hydraulic excavator lift capacity standard ISO 10567:2007. They do not exceed 87% of hydraulic lifting capacity or 75% of tipping load. Weight of all lifting accessories must be deducted from the above lifting capacities. Lifting capacities are based on the machine standing on a firm, uniform supporting surface. The use of a work tool attachment point to handle/lift objects, could affect the machine lift performance.

Lift capacity stays with ±5% for all available track shoes.

Always refer to the appropriate Operation and Maintenance Manual for specific product information.

330F Hydraulic Excavator Specifications

Super Long Reach Boom Lift Capacities – Counterweight: 6.75 mt (7.4 t) – without Bucket



		1.5 m/5.0 ft		3.0 m/10.0 ft		4.5 m/15.0 ft		6.0 m/20.0 ft		7.5 m/25.0 ft		9.0 m/30.0 ft		m ft		
12.0 m	kg													*1350	*1350	14.02
40.0 ft	lb													*2,950	*2,950	45.54
10.5 m	kg													*1300	*1300	15.00
35.0 ft	lb													*2,800	*2,800	48.88
9.0 m	kg													*1250	*1250	15.77
30.0 ft	lb													*2,750	*2,750	51.52
7.5 m	kg													*1250	*1250	16.37
25.0 ft	lb													*2,750	*2,750	53.56
6.0 m	kg													*1250	*1250	16.81
20.0 ft	lb													*2,750	*2,750	55.06
4.5 m	kg													*1300	*1300	17.10
15.0 ft	lb													*2,800	*2,800	56.08
3.0 m	kg			*4150	*4150											
10.0 ft	lb											*4650	*4650	*1350	*1350	17.27
												*10,100	*10,100	*2,900	*2,900	56.63
1.5 m	kg			*1550	*1550	*5200	*5200	*8300	7500	*6400	5600	*5350	4350	*1400	*1400	17.29
5.0 ft	lb			*3,550	*3,550	*12,200	*12,200	*17,800	16,200	*13,850	12,050	*11,550	9,400	*3,000	*3,000	56.74
0 m	kg			*1650	*1650	*3600	*3600	*8250	6750	*7350	5100	*6000	4050	*1450	*1450	17.19
0 ft	lb			*3,750	*3,750	*8,250	*8,250	*19,300	14,600	*15,850	11,050	*12,950	8,700	*3,150	*3,150	56.40
-1.5 m	kg	*1650	*1650	*2150	*2150	*3550	*3550	*6500	6300	7900	4750	6150	3800	*1550	1500	16.95
-5.0 ft	lb	*3,600	*3,600	*4,800	*4,800	*8,000	*8,000	*14,950	13,550	17,050	10,250	13,300	8,100	*3,400	3,250	55.60
-3.0 m	kg	*2250	*2250	*2750	*2750	*3900	*3900	*6250	6050	7650	4550	5950	3600	*1650	1500	16.58
-10.0 ft	lb	*4,950	*4,950	*6,100	*6,100	*8,750	*8,750	*14,250	13,000	16,450	9,750	12,850	7,700	*3,650	3,300	54.34
-4.5 m	kg	*2850	*2850	*3350	*3350	*4450	*4450	*6550	5900	7500	4400	5850	3450	*1850	1600	16.05
-15.0 ft	lb	*6,300	*6,300	*7,500	*7,500	*10,000	*10,000	*14,950	12,700	16,150	9,450	12,550	7,450	*4,050	3,450	52.56
-6.0 m	kg	*3450	*3450	*4050	*4050	*5150	*5150	*7250	5900	7450	4350	5800	3400	*2050	1700	15.36
-20.0 ft	lb	*7,700	*7,700	*9,050	*9,050	*11,650	*11,650	*16,500	12,700	16,050	9,350	12,450	7,350	*4,600	3,700	50.22
-7.5 m	kg	*4150	*4150	*4800	*4800	*6000	*6000	*8250	5950	7500	4350	5800	3400	*2400	1850	14.47
-25.0 ft	lb	*9,250	*9,250	*10,800	*10,800	*13,600	*13,600	*18,800	12,800	16,100	9,400	12,450	7,350	*5,350	4,100	47.23
-9.0 m	kg	*4850	*4850	*5650	*5650	*7050	*7050	*9650	6100	7550	4450	5850	3450	*2950	2100	13.36
-30.0 ft	lb	*10,900	*10,900	*12,750	*12,750	*15,950	*15,950	*22,100	13,150	16,300	9,600	12,600	7,500	*6,600	4,700	43.45
-10.5 m	kg	*5650	*5650	*6650	*6650	*8350	8350	*9950	6300	7750	4600	5950	3600	*3900	2550	11.96
-35.0 ft	lb	*12,700	*12,700	*15,000	*15,000	*19,000	*19,000	*21,300	13,600	16,700	9,950	12,900	7,750	*8,900	5,700	38.66
-12.0 m	kg			*7800	*7800	*10,100	*10,100	*8650	6600	*7050	4850	*5800	3800	*4900	3300	10.15
-40.0 ft	lb			*17,700	*17,700	*23,200	22,050	*18,350	14,300	*14,850	10,500	*12,100	8,250	*10,850	7,550	32.40
-13.5 m	kg													*5550	*5550	7.10



ISO 10567



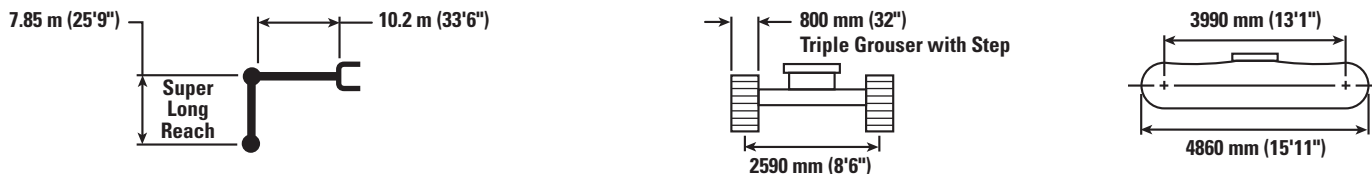
*Indicates that the load is limited by hydraulic lifting capacity rather than tipping load. The above loads are in compliance with hydraulic excavator lift capacity standard ISO 10567:2007. They do not exceed 87% of hydraulic lifting capacity or 75% of tipping load. Weight of all lifting accessories must be deducted from the above lifting capacities. Lifting capacities are based on the machine standing on a firm, uniform supporting surface. The use of a work tool attachment point to handle/lift objects, could affect the machine lift performance.

Lift capacity stays with ±5% for all available track shoes.

Always refer to the appropriate Operation and Maintenance Manual for specific product information.

330F Hydraulic Excavator Specifications

Super Long Reach Boom Lift Capacities – Counterweight: 6.75 mt (7.4 t) – without Bucket



		10.5 m/35.0 ft		12.0 m/40.0 ft		13.5 m/45.0 ft		15.0 m/50.0 ft		16.5 m/55.0 ft		m ft		
12.0 m 40.0 ft	kg lb					*3,350	*3,350					*1350 *2,950	*1350 *2,950	14.02 45.54
10.5 m 35.0 ft	kg lb											*1300 *2,800	*1300 *2,800	15.00 48.88
9.0 m 30.0 ft	kg lb							*2050 *3,950	*2050 *3,950			*1250 *2,750	*1250 *2,750	15.77 51.52
7.5 m 25.0 ft	kg lb					*3000 *6,550	2800 6,000	*2550 *5,150	2300 4,850			*1250 *2,750	*1250 *2,750	16.37 53.56
6.0 m 20.0 ft	kg lb					*3150 *6,900	2750 5,850	*2950 *6,050	2250 4,750	*1700 *2,850	*1700 *2,850	*1250 *2,750	*1250 *2,750	16.81 55.06
4.5 m 15.0 ft	kg lb			*3500 *7,650	3200 6,900	*3350 *7,350	2600 5,600	*3300 *6,850	2150 4,550	*2100 *3,850	1750 3,750	*1300 *2,800	*1300 *2,800	17.10 56.08
3.0 m 10.0 ft	kg lb	*4200 *9,050	3750 8,050	*3850 *8,350	3050 6,500	*3600 *7,850	2500 5,350	3300 7,000	2050 4,400	*2350 *4,500	1700 3,650	*1350 *2,900	*1350 *2,900	17.27 56.63
1.5 m 5.0 ft	kg lb	*4650 *10,100	3500 7,550	*4200 *9,100	2850 6,150	3750 8,050	2350 5,050	3200 6,800	2000 4,200	*2550 *4,800	1650 3,500	*1400 *3,000	*1400 *3,000	17.29 56.74
0 m 0 ft	kg lb	*5150 *11,100	3300 7,050	4300 9,250	2700 5,800	3650 7,800	2250 4,800	3100 6,650	1900 4,050	*2550 *4,800	1600 3,400	*1450 *3,150	*1450 *3,150	17.19 56.40
-1.5 m -5.0 ft	kg lb	5000 10,750	3100 6,600	4150 8,950	2550 5,500	3500 7,550	2150 4,600	3000 6,500	1800 3,900	*2400 *4,150	1550 3,300	*1550 *3,400	1500 3,250	16.95 55.60
-3.0 m -10.0 ft	kg lb	4850 10,400	2950 6,300	4050 8,700	2450 5,250	3450 7,400	2050 4,450	2950 6,350	1750 3,750	*1850	1550	*1650 *3,650	1500 3,300	16.58 54.34
-4.5 m -15.0 ft	kg lb	4750 10,200	2850 6,100	3950 8,500	2350 5,100	3400 7,250	2000 4,300	2950 6,300	1750 3,700			*1850 *4,050	1600 3,450	16.05 52.56
-6.0 m -20.0 ft	kg lb	4700 10,100	2800 6,000	3900 8,450	2350 5,000	3350 7,200	2000 4,300	2950 *4,950	1750 3,750			*2050 *4,600	1700 3,700	15.36 50.22
-7.5 m -25.0 ft	kg lb	4700 10,100	2800 6,000	3950 8,450	2350 5,050	3400 7,300	2000 4,350					*2400 *5,350	1850 4,100	14.47 47.23
-9.0 m -30.0 ft	kg lb	4750 10,200	2850 6,100	4000 8,600	2400 5,150							*2950 *6,600	2100 4,700	13.36 43.45
-10.5 m -35.0 ft	kg lb	4850 10,500	2950 6,400									*3900 *8,900	2550 5,700	11.96 38.66
-12.0 m -40.0 ft	kg lb											*4900 *10,850	3300 7,550	10.15 32.40
-13.5 m	kg											*5550	*5550	7.10



ISO 10567



*Indicates that the load is limited by hydraulic lifting capacity rather than tipping load. The above loads are in compliance with hydraulic excavator lift capacity standard ISO 10567:2007. They do not exceed 87% of hydraulic lifting capacity or 75% of tipping load. Weight of all lifting accessories must be deducted from the above lifting capacities. Lifting capacities are based on the machine standing on a firm, uniform supporting surface. The use of a work tool attachment point to handle/lift objects, could affect the machine lift performance.

Lift capacity stays with ±5% for all available track shoes.

Always refer to the appropriate Operation and Maintenance Manual for specific product information.

330F Hydraulic Excavator Specifications

Work Tool Offering Guide*

Boom Type	Reach Boom	
Stick Size	R3.75 HD	R3.2 HD
Hydraulic Hammer	H120Es H130Es H140Es	H120Es H130Es H140Es
Multi-Processor	MP324 CC Jaw** MP324 D Jaw** MP324 P Jaw*** MP324 S Jaw** MP324 TS Jaw*** MP324 U Jaw***	MP324 CC Jaw MP324 D Jaw MP324 P Jaw** MP324 S Jaw MP324 TS Jaw** MP324 U Jaw
Pulverizer	P225**	P225
Demolition and Sorting Grapple	G320B-D/R*** G325B-D/R***	G320B-D/R G325B-D/R***
Scrap and Demolition Shear	S320B S340B##	S320B S325B*** S340B##
Compactor (Vibratory Plate)	CVP110	CVP110
Contractors' Grapple	G120B – G130B	G120B – G130B
Orange Peel Grapple		
Rippers		
Trash Grapple		
Thumbs		
Rakes		
Pin Grabber Coupler	Cat-PG	
Dedicated Quick Coupler		

These work tools are available for the 330F L.
Consult your Cat dealer for proper match.

* Offerings not available in all areas. Matches are dependent on excavator configurations. Consult your Cat dealer to determine what is offered in your area and for proper work tool match.

** Match; Pin-on or Dedicated Quick Coupler

*** Match; Pin-on only

Match; Boom Mount

330F Hydraulic Excavator Specifications

Bucket Specifications and Compatibility

	Linkage	Width		Capacity		Weight		Fill	Reach Boom		Super Long Reach Boom
		mm	in	m ³	yd ³	kg	lb		%	R3.75 (12'4")	
Without Quick Coupler											
General Duty (GDC)	CB	600	24	0.63	0.83	724	1,595	100%	●	●	
	CB	750	30	0.86	1.13	810	1,785	100%	●	●	
	CB	900	36	1.09	1.43	907	1,998	100%	●	●	
	CB	1050	42	1.34	1.75	979	2,157	100%	●	●	
	CB	1200	48	1.58	2.07	1070	2,358	100%	⊙	●	
	CB	1350	54	1.83	2.40	1164	2,564	100%	⊖	⊙	
Heavy Duty (HD)	CB	600	24	0.52	0.68	763	1,681	100%	●	●	
	CB	750	30	0.71	0.93	847	1,866	100%	●	●	
	CB	900	36	0.91	1.19	935	2,061	100%	●	●	
	CB	1050	42	1.12	1.46	1024	2,256	100%	●	●	
	CB	1200	48	1.33	1.74	1095	2,413	100%	●	●	
	CB	1350	54	1.54	2.02	1188	2,618	100%	⊙	●	
	CB	1500	60	1.76	2.30	1285	2,831	100%	⊖	⊙	
	CB	1650	66	1.97	2.58	1357	2,990	100%	○	⊖	
Severe Duty (SD)	CB	600	24	0.52	0.68	810	1,784	90%	●	●	
	CB	750	30	0.71	0.93	902	1,987	90%	●	●	
	CB	900	36	0.91	1.19	999	2,202	90%	●	●	
	CB	1050	42	1.12	1.46	1097	2,417	90%	●	●	
	CB	1200	48	1.33	1.74	1178	2,595	90%	●	●	
Ditch Cleaning (DC)	A	1200	48	0.57	0.74	388	855	100%			⊖
General Duty (GD)	A	900	36	0.53	0.69	394	869	100%			⊖
Maximum load pin on (payload + bucket)								kg	3937	4417	1288
								lb	8,677	9,735	2,839

The above loads are in compliance with hydraulic excavator standard EN474, they do not exceed 87% of hydraulic lifting capacity or 75% of tipping capacity over the side with front linkage fully extended at ground line with bucket curled.

Capacity based on ISO 7451.

Bucket weight with General Duty tips.

Maximum Material Density:

- 2100 kg/m³ (3,500 lb/yd³)
- ⊙ 1800 kg/m³ (3,000 lb/yd³)
- ⊖ 1500 kg/m³ (2,500 lb/yd³)
- 1200 kg/m³ (2,000 lb/yd³)

Caterpillar recommends using appropriate work tools to maximize the value customers receive from our products. Use of work tools, including buckets, which are outside of Caterpillar's recommendations or specifications for weight, dimensions, flows, pressures, etc. may result in less-than-optimal performance, including but not limited to reductions in production, stability, reliability, and component durability. Improper use of a work tool resulting in sweeping, prying, twisting and/or catching of heavy loads will reduce the life of the boom and stick.

330F Hydraulic Excavator Specifications

Bucket Specifications and Compatibility

	Linkage	Width		Capacity		Weight		Fill	Reach Boom		Super Long Reach Boom
		mm	in	m ³	yd ³	kg	lb		%	R3.75 (12'4")	
With Pin Grabber Coupler											
General Duty (GDC)	CB	600	24	0.63	0.83	724	1,595	100%	●	●	
	CB	750	30	0.86	1.13	810	1,785	100%	●	●	
	CB	900	36	1.09	1.43	907	1,998	100%	●	●	
	CB	1050	42	1.34	1.75	979	2,157	100%	⊙	●	
	CB	1200	48	1.58	2.07	1070	2,358	100%	⊖	⊙	
	CB	1350	54	1.83	2.40	1164	2,564	100%	○	⊖	
Heavy Duty (HD)	CB	600	24	0.52	0.68	763	1,681	100%	●	●	
	CB	750	30	0.71	0.93	847	1,866	100%	●	●	
	CB	900	36	0.91	1.19	935	2,061	100%	●	●	
	CB	1050	42	1.12	1.46	1024	2,256	100%	●	●	
	CB	1200	48	1.33	1.74	1095	2,413	100%	⊙	●	
	CB	1350	54	1.54	2.02	1188	2,618	100%	⊖	⊙	
	CB	1500	60	1.76	2.30	1285	2,831	100%	○	⊖	
	CB	1650	66	1.97	2.58	1357	2,990	100%	◇	○	
Severe Duty (SD)	CB	600	24	0.52	0.68	810	1,784	90%	●	●	
	CB	750	30	0.71	0.93	902	1,987	90%	●	●	
	CB	900	36	0.91	1.19	999	2,202	90%	●	●	
	CB	1050	42	1.12	1.46	1097	2,417	90%	●	●	
	CB	1200	48	1.33	1.74	1178	2,595	90%	⊙	●	
Maximum load pin on (payload + bucket)								kg	3432	3912	730
								lb	7,565	8,623	1,609

Maximum Material Density:

- 2100 kg/m³ (3,500 lb/yd³)
- ⊙ 1800 kg/m³ (3,000 lb/yd³)
- ⊖ 1500 kg/m³ (2,500 lb/yd³)
- 1200 kg/m³ (2,000 lb/yd³)
- ◇ 900 kg/m³ (1,500 lb/yd³)

The above loads are in compliance with hydraulic excavator standard EN474, they do not exceed 87% of hydraulic lifting capacity or 75% of tipping capacity over the side with front linkage fully extended at ground line with bucket curled.

Capacity based on ISO 7451.

Bucket weight with General Duty tips.

Caterpillar recommends using appropriate work tools to maximize the value customers receive from our products. Use of work tools, including buckets, which are outside of Caterpillar's recommendations or specifications for weight, dimensions, flows, pressures, etc. may result in less-than-optimal performance, including but not limited to reductions in production, stability, reliability, and component durability. Improper use of a work tool resulting in sweeping, prying, twisting and/or catching of heavy loads will reduce the life of the boom and stick.

Standard Equipment

Standard equipment may vary. Consult your Cat dealer for details.

ENGINE

- C7.1 ACERT diesel engine
- Biodiesel capable up to B20
- Meets Tier 4 Final emission standards
- 4600 m (15,090 ft) altitude capability
- Electric fuel lifting pump
- Automatic engine speed control
- Standard, economy and high power modes
- Two-speed travel
- Side-by-side cooling system
- Radial seal air filter
- Primary filter with water separator and water separator indicator switch
- Fuel differential indicator switch in fuel line
- 1×4 micron main filters
- 1×10 micron primary fuel line filter

HYDRAULIC SYSTEM

- Electric Boom Regeneration Circuit
- Stick Regeneration Circuit
- Reverse swing dampening valve
- Automatic swing parking brake
- High-performance hydraulic return filter
- Capability of installing HP stackable valve and medium and QC valve
- Capability of installing additional auxiliary pump and circuit
- Capability of installing boom lowering control device and stick lowering check valve
- Capability of installing Cat Bio hydraulic oil

CAB

- Pressurized operator station with positive filtration
- Mirror package
- Sliding upper door window (left-hand cab door)
- Glass-breaking safety hammer
- Removable lower windshield with in cab storage bracket
- Coat hook
- Beverage holder
- Literature holder
- Radio with MP3 auxiliary audio port
- Two stereo speakers
- Storage shelf suitable for lunch or toolbox
- Color LCD display with warning, filter/fluid change, and working hour information
- Adjustable armrest
- Height adjustable joystick consoles
- Neutral lever (lock out) for all controls
- Travel control pedals with removable hand levers
- Capability of installing two additional pedals
- Two power outlets, 10 amp (total)
- Laminated glass front upper window and tempered other windows
- Cab hatch emergency exit
- AM/FM radio

UNDERCARRIAGE

- Grease Lubricated Track GLT2, resin seal
- Towing eye on base frame

ELECTRICAL

- 115 amp alternator
- Circuit breaker
- Capability to electrically connect a beacon

LIGHTS

- Boom light with time delay
- Cab lights with time delay
- Exterior lights integrated into storage box

SECURITY

- Cat one key security system
- Door locks
- Cap locks on fuel and hydraulic tanks
- Lockable external tool/storage box
- Signaling/warning horn
- Secondary engine shutoff switch
- Openable skylight for emergency exit
- Rearview camera

330F Optional Equipment

Optional Equipment

Optional equipment may vary. Consult your Cat dealer for details.

ENGINE

- Starting kit, cold weather, -32° C (-26° F)
- Jump start receptacle
- Quick drains, engine and hydraulic oil

HYDRAULIC SYSTEM

- Control pattern quick-changer, two way
- Additional circuit
- Boom and stick lines
- High-pressure line
- Medium-pressure line
- Cat quick coupler line – high- and medium-pressure capable
- Quick coupler for high pressure
- Tool control system

CAB

- Seat, high-back air suspension with heater and cooling
- Seat, high-back air suspension with heater
- Sunscreen
- Windshield wiper, with washer
- Air pre-filter
- Travel alarm
- Straight travel pedal

UNDERCARRIAGE

- 600 mm (24") single grouser shoes
- 800 mm (32") triple grouser shoes
- Guard, full length for long undercarriage
- Guard, heavy-duty bottom
- Segmented (3 piece) track guiding guard

COUNTERWEIGHT

- 5.8 mt (6.3 t)
- 6.75 mt (7.4 t)

FRONT LINKAGE

- Bucket linkage, CB2 family with lifting eye
- Reach 6.15 m (20'2") boom
- R3.75 m (12'4") stick
- R3.2 m (10'6") stick
- Super Long Reach 10.2 m (33'6") boom
- SLR 7.85 m (25'9") stick

LIGHTS

- Working lights, cab mounted with time delay
- Halogen boom lights

SECURITY

- FOGS, bolt-on
- Guard, cab front, mesh
- Guard, vandalism
- Cat MSS (anti-theft)

TECHNOLOGY

- Cat Grade Control Depth and Slope
- Product Link™

For more complete information on Cat products, dealer services, and industry solutions, visit us on the web at www.cat.com

© 2016 Caterpillar
All rights reserved

Materials and specifications are subject to change without notice. Featured machines in photos may include additional equipment. See your Cat dealer for available options.

CAT, CATERPILLAR, SAFETY.CAT.COM, their respective logos, "Caterpillar Yellow" and the "Power Edge" trade dress, as well as corporate and product identity used herein, are trademarks of Caterpillar and may not be used without permission.

VisionLink is a trademark of Trimble Navigation Limited, registered in the United States and in other countries.

AEHQ7637-01 (01-2016)
Replaces AEHQ7637
(North America)



Courtesy of Machine.Market