



Flywheel power ..... 55.2 kW/74 HP  
Operating wt. range ..... 6227 kg/13,700 lb to 7359 kg/16,194 lb  
Backhoe digging depth up to ..... 5545 mm/18'2"  
Stick lift at 6' ..... 2363 kg/5210 lb

# 416B BACKHOE LOADER



# Make More, Save More. With The 416B On

Now you can do more work—and keep more of what you earn—with a truly advanced backhoe loader.

It's more than the best that Caterpillar design, engineering and manufacturing expertise can offer. Much more.

The 416B backhoe loader was designed with input from the world's most demanding business people:

- Owner-operators with 30-plus years under their belts.
- Competitive-make users who know what they like—and don't like.
- Contractors who log thousands of hours, year after year—and simply can't afford downtime.



Now the B-Series is ready. Backhoe loaders that mean business. Your business. Strictly business.

Lift higher, load easier with greater reach. The excavator-style boom enables spill-free truck loading right from the trench—without banging sideboards. You can also work over walls and other obstructions and you'll find it easier to dig under pipes that cross the trench.



Courtesy of MachineMarket

## TECHNICAL DATA

Standard Duty Buckets						
Width		Capacities SAE Rated		Weight		No. of Teeth
mm	in	L	ft <sup>3</sup>	kg	lb	
300	12	70	2.5	110	243	3
450	18	130	4.5	121	267	4
600	24	200	7.0	134	294	4
750	30	260	9.5	149	329	5
900	36	320	11.5	155	342	6

Note: Includes weld-on adapters and replaceable tips.

High Capacity Buckets						
Width		Capacities SAE Rated		Weight		No. of Teeth
mm	in	L	ft <sup>3</sup>	kg	lb	
450	18	180	6.5	149	329	4
600	24	240	9.0	168	369	4
750	30	320	11.0	191	420	5
900	36	380	14.0	207	455	6

Note: Includes weld-on adapters and replaceable tips.

Heavy Duty Buckets						
Width		Capacities SAE Rated		Weight		No. of Teeth
mm	in	L	ft <sup>3</sup>	kg	lb	
300	12	70	2.5	110	243	3
400	16	100	3.5	121	266	3
450	18	130	4.5	126	278	4
600	24	200	7.0	148	326	4
750	30	260	9.5	179	395	5
900	36	320	11.5	190	417	6

Note: Includes weld-on adapters and replaceable tips.

Extreme Service Buckets						
Width		Capacities SAE Rated		Weight		No. of Teeth
mm	in	L	ft <sup>3</sup>	kg	lb	
450	18	100	4.0	147	323	4
600	24	160	6.0	164	360	4

Note: Includes weld-on adapters and replaceable tips.

### Standard Equipment

NOTE: Standard and optional equipment may vary. Consult your Caterpillar dealer for specifics.

Air cleaner, dry-type with pre-cleaner and filter condition indicator.  
 Alternator, 52-amp, 12-volt.  
 Antifreeze (to -20° F).  
 Audible system fault alarm.  
 Backhoe, 4420 mm/14'6" center-pivot excavator style two-lever control.  
 Battery, maintenance free, 700 CCA.  
 Backhoe position footrest.  
 Boom transport lock.  
 Brace, lift cylinder.  
 Brake, parking.  
 Brakes, oil-disc.  
 Bucket level indicator.  
 Differential lock.  
 Engine enclosure.  
 Engine, Cat 3054 with 12-volt electric start.  
 Fan, suction.  
 Fast reversing shuttle, all gears.  
 Fenders, rear.  
 Fender, cover.  
 Flashing hazard/signal lights.  
 Floor mat.  
 Front axle pivot, maintenance free.

Front grill, impact absorbing.  
 Front and rear Halogen working lights (4).  
 Gauges:  
 Coolant temperature.  
 Fuel level.  
 Tachometer.  
 Torque converter oil temperature.  
 Voltmeter.  
 Grouser type stabilizer shoes.  
 Ground line fill fuel tank with 28 gallon capacity.  
 Hydraulic reservoir and cooler.  
 Indicators:  
 Air cleaner service.  
 Brake on.  
 Clock hour meter.  
 Engine coolant.  
 Hydraulic oil level sight gauge.  
 Oil pressure.  
 Instrument panel lights.  
 Key start/stop system with auxiliary position.  
 Loader, self-leveling with Return-to-Dig and transmission disconnect switch on single-lever control.  
 Mirror, rear-view.

Power steering, hydrostatic.  
 ROPS canopy, with dial access.  
 Seat, vinyl suspension, fully adjustable with armrests.  
 Seat belt, retractable (51 mm/2").  
 Spin, on fuel, engine oil, transmission oil filters.  
 Starting system, thermal starting aid.  
 Storage compartment, internal.  
 Stop and tail lights (2).  
 Swing transport lock.  
 Tires:  
 Front 11L-16, (10 PR).  
 Rear 16.9-24 (8 PR).  
 Tool box, external.  
 Torque converter.  
 Throttles, hand and foot.  
 Transmission, four-speed power shuttle with shuttle lever lock.  
 Transmission neutralizer switch.  
 Transport tie-down points.  
 Vandalism protection.  
 Warning horn, front, electric.  
 Water separator.

## Machine Dimensions

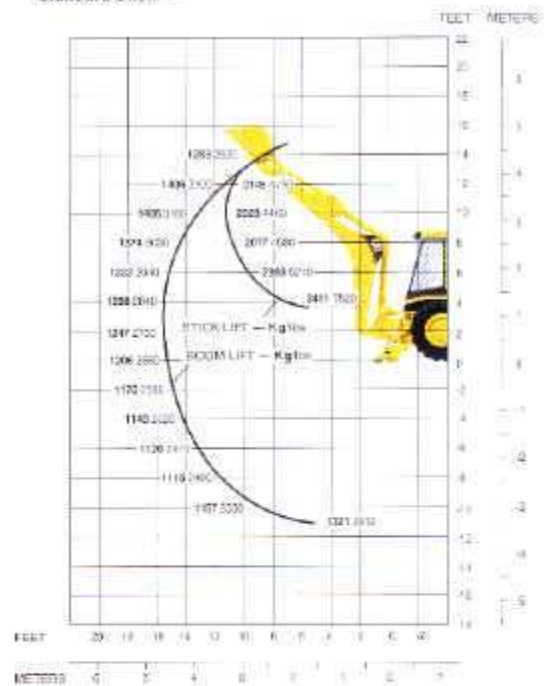
(SAE J49 and J732c)

	mm	ft/in
Overall transport length	6838	22' 5"
Overall length (loader on ground)	6840	22' 6"
Overall transport height	3448	11' 3"
Overall width, with bucket	2262	7' 5"
Height to top of canopy	2719	8' 11"
Height to top of cab	2719	8' 11"
Height to top of exhaust stack	2746	9' 0"
Height to top of steering wheel	1950	6' 5"
Height to loader hinge pin (transport)	368	1' 3"
Ground clearance (machine main frame)	297	1' 2"
Rear axle centerline to front grill	2610	8' 7"
Front wheel tread	1780	5' 10"
Rear wheel tread	1714	5' 7"
Wheel base (2WD)	2100	6' 11"
(4WD)	2067	6' 9"

NOTE: Specifications are based on a machine equipped with 11L-16, 10 PR front tires, 16.9-24, 8 PR rear tires, ROPS canopy, 4420 mm/14'6" backhoe with 600 mm/24" standard duty bucket, loader with 2262 mm/89", 0.76 m<sup>3</sup>/1.0 yd<sup>3</sup> General Purpose bucket and standard equipment unless otherwise specified.

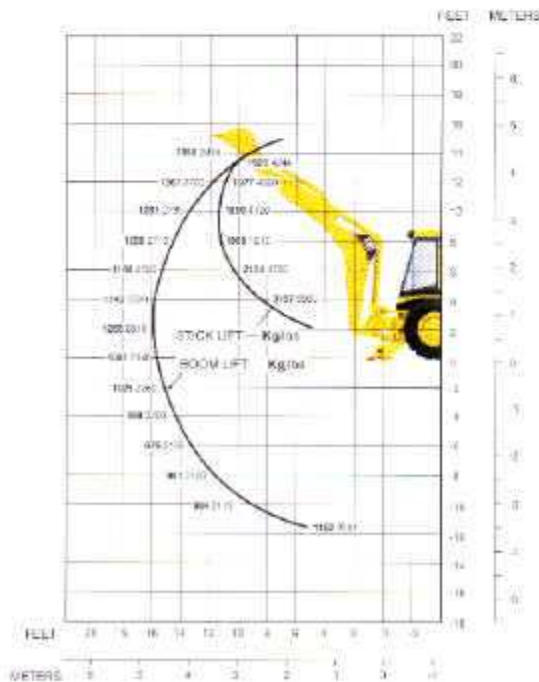
## 416B Backhoe Lift Capacity:

Standard Stick —



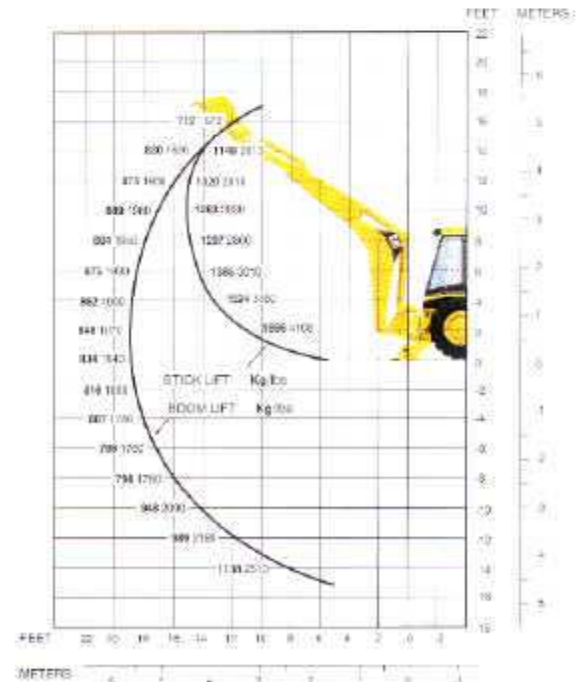
## 416B Backhoe Lift Capacity:

Extendable Stick — Retracted



## 416B Backhoe Lift Capacity:

Extendable Stick — Extended



NOTE: Lift capacities represented comply with SAE J31.

# TECHNICAL DATA

## Loader Bucket Dimensions and Performance

## Loader Dimensions

Bucket Type		General Purpose	Multi-Purpose
Width	(mm/in)	2262/89"	2262/89"
Heaped capacity	(m <sup>3</sup> /yd <sup>3</sup> )	0.76/1.00	0.76/1.00
Lift capacity at full height	(kg/lb)	2622/5780	2265/4993
Breakout force	(kN/lb)	40/8900	41/9300
Hinge pin height	(mm/ft/in)	3293/10'9"	3293/10'9"
Dump angle full height		45°	45°
Dump height @-45°	(mm/ft/in)	2637/8'7"	2637/8'7"
Reach at full height/45°	(mm/ft/in)	719/2'4"	651/2'2"
Maximum operating height	(mm/ft/in)	4024/13'2"	4141/13'7"
Maximum rollback at ground		40°	41°
Digging depth	(mm/in)	104/4"	134/5"
Grading angle		112°	99°
Width of dozer cutting edge	(mm/ft/in)	—	2262/7'5"
Clam opening maximum	(mm/ft/in)	—	958/3'1"
Weight	(kg/lb)	367/809	559/1232

## Weights

Standard backhoe loader with additional: 0.76 m<sup>3</sup>/1.0 yd<sup>3</sup> General Purpose loader bucket, 600 mm/24" backhoe bucket, 79 kg/175 lb operator, full fuel tank.

SAE Operating weight ..... 6227 kg/13,700 lb

	kg	lb
Bob .....	257	566
Four-wheel drive .....	106	233
Extendable stick* (excludes CTWT) .....	237	522
Multi-Purpose bucket .....	192	423

\*Includes 16.9-24 10 PR tires.

## Axes

Axle rating, two-wheel drive

**Front axle**  
SAE J43 ..... 7068 kg/15,582 lb  
Dynamic ..... 29 032 kg/64,016 lb

**Rear axle**  
SAE J43 ..... 5535 kg/12,203 lb  
Dynamic ..... 22 460 kg/49,524 lb

**Rear Axle**  
Heavy duty axle with inboard planetary reduction and differential lock.

**Front Axle**  
Oscillation 11" each direction from centerline. Switch on instrument panel engages four-wheel drive, on-the-go, in any gear, forward and reverse.

Drive from differential to front wheels via planetary reduction in each wheel. On-the-go shifting up or down in all gears is retained in four-wheel drive.

## Steering

Steering unit provides emergency steering capability in case of power failure.

Type ..... Front Wheel  
Power Steering ..... Hydrostatic  
Cylinder (1) ..... double-acting, bore 76 mm/3" stroke 220 mm/8.7", rod diameter 48 mm/1.9"

Turning radius (wheels not braked):  
two-wheel drive ..... 3914 mm/12'10"  
four-wheel drive engaged ..... 3914 mm/12'10"

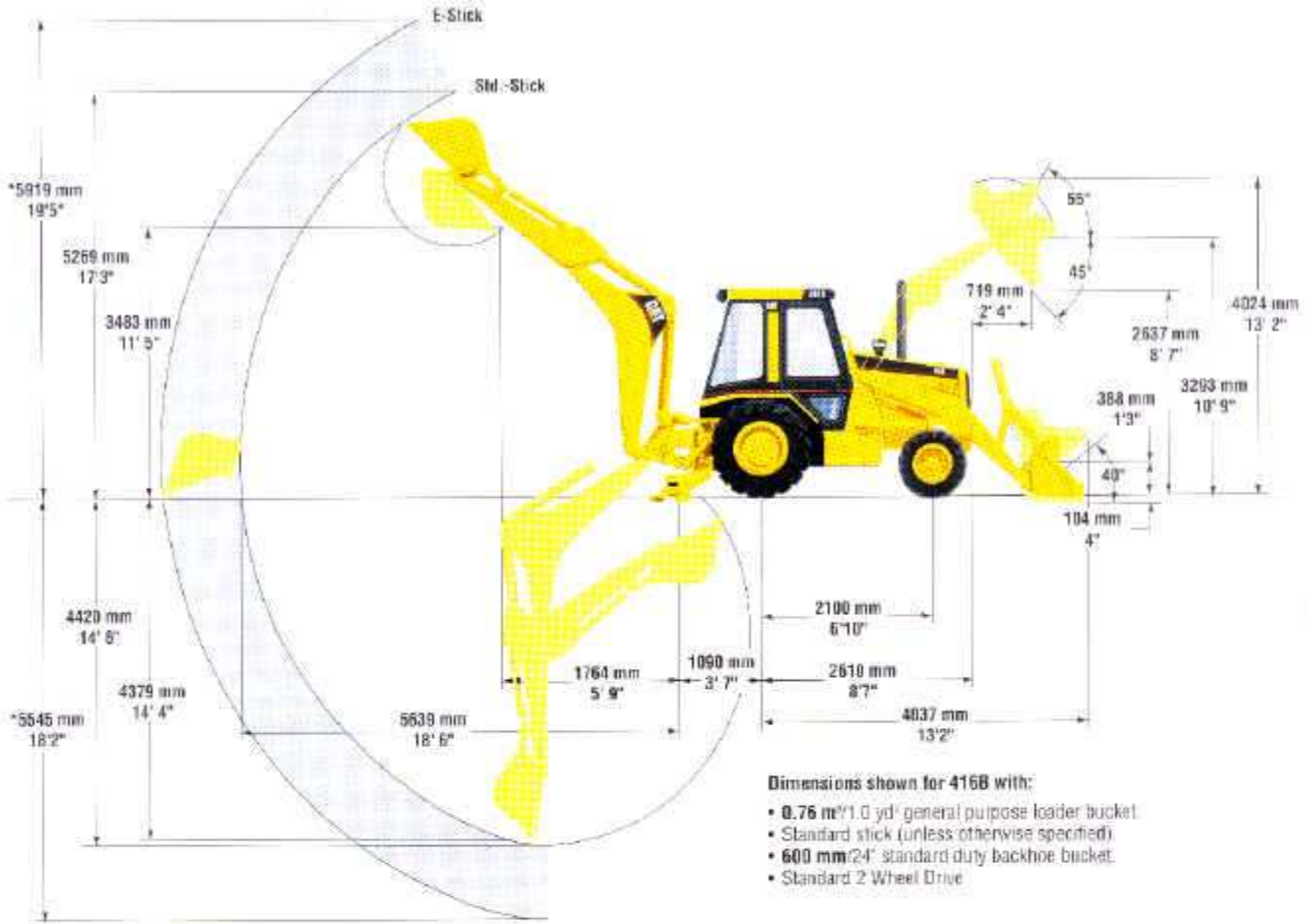
## Service Refill Capacities

	Liters	U.S. Gallons
Cooling System .....	21	5.5
Fuel Tank .....	106	28
Engine Oil with Filter .....	8	2.1
Transmission .....	10	2.6
Rear Axle .....	18.5	4.9
Hydraulic Reservoir .....	37.9	9.9
Hydraulic System .....	79	20.7
Four-Wheel Drive Front Axle .....	7.5	2.0

## Tires

Type — Front	Size	Ply Rating	Profile
Standard 2wd .....	11L-16	10	Laborer
Optional 2wd .....	11L-16	12	Laborer
Standard 4wd .....	10.5-20	10	Industrial
Optional 4wd .....	12.5/80-18	10	Traction
Optional 4wd .....	12.5/80-18	10	Roading
Type — Rear	Size	Ply Rating	Profile
Standard 2wd .....	16.9-24	8	Industrial
Optional 2wd .....	16.9-24	10	Industrial
Optional 2wd .....	19.5L-24	8	Industrial
Optional 2wd .....	19.5L-24	10	Industrial
Standard 4wd .....	19.5L-24	8	Industrial
Optional 4wd .....	19.5L-24	10	Industrial

## TECHNICAL DATA



Dimensions shown for 416B with:

- 0.76 m<sup>3</sup>/1.0 yd<sup>3</sup> general purpose loader bucket.
- Standard stick (unless otherwise specified).
- 600 mm/24" standard duty backhoe bucket.
- Standard 2 Wheel Drive

\* Extendable Stick

## Backhoe Dimensions and Performance

	Standard Stick	Extendable stick	
		Retracted	Extended
Digging depth — SAE (max)	4420 mm 14'6"	4498 mm 14'9"	5545 mm 18'2"
— 610 mm/24" flat bottom	4379 mm 14'4"	4446 mm 14'7"	5498 mm 18'0"
Overall reach from rear axle centerline at ground line	6729 mm 22'1"	6772 mm 22'3"	7770 mm 25'6"
Overall reach from swing pivot at ground line	5639 mm 18'6"	5682 mm 18'8"	6680 mm 21'11"
Maximum operating height	5269 mm 17'3"	5240 mm 17'2"	5919 mm 19'5"
Loading height	3483 mm 11'5"	3654 mm 12'0"	4223 mm 13'10"
Loading reach	1764 mm 5'9"	1804 mm 5'11"	2706 mm 8'11"
Swing arc	180°	180°	180°
Bucket rotation position #1 and #2	170°	165°	165°
Stabilizer spread operating position	3254 mm 10'8"	3254 mm 10'8"	3254 mm 10'8"
Stabilizer spread transport position	2130 mm 7'0"	2130 mm 7'0"	2130 mm 7'0"
Bucket Digging Force	52.0 kN 11,693 lb	53.6 kN 12,057 lb	53.6 kN 12,057 lb
Stick Digging Force	34.3 kN 7704 lb	34.8 kN 7830 lb	25.0 kN 5631 lb
Leveling angle (maximum slope on which backhoe will make vertical cut)	14°	14°	14°

# 416B BACKHOE LOADER

Gross Power (NA)  
**57.2 kW/77 HP**

Flywheel Power (NA)  
**55.2 kW/74 HP**

Operating Weight Range  
**6227 kg/13,700 lb to  
7359 kg/16,194 lb**

Front Loader  
Bucket capacities  
Multi Purpose  
**0.76 m<sup>3</sup>/1.00 yd<sup>3</sup>**

General Purpose  
**0.76 m<sup>3</sup>/1.00 yd<sup>3</sup>**

Breakout force  
**40 kN/8900 lb**

Backhoe Loader  
Digging depth up to  
**5545 mm/18'2"**

Bucket digging force  
**52.0 kN/11,693 lb**

Stick digging force  
**34.3 kN/7704 lb**



## Engine

Power at 2200 RPM  
SAE J1995 gross ..... **57.2 kW/77 HP**  
SAE J1349 net ..... **55.2 kW/74 HP**  
SAE J1995 gross (Turbo) ..... **61.4 kW/82 HP**  
SAE J1349 net (Turbo) ..... **58.9 kW/79 HP**  
(Kilowatts (kW) is the International System of Units equivalent of horsepower.)

Net power at the flywheel of the machine engine is based on SAE J1349 standard conditions of **25°C/77°F** and **100 kPa/29.61" Hg.** Power is based on using 35° API (15.6°C/60°F) gravity fuel having an LHV of **42 780 kJ/kg** (18,390 Btu/lb) when used at **29.4°C/85°F** and with a density of **838.9 g/L** (7.001 lb U.S. gal). Power rating is adjusted for machine equipped with fan, air cleaner, alternator, water pump, fuel pump, muffler and lubricating oil pump. No derating is required for NA up to **1500 m/5000 ft.** altitude.

These additional ratings also apply at 2200 RPM:

	Naturally Aspirated		Turbocharged	
	kW	HP	kW	HP
ISO 9249 .....	55.8	74.8	59.5	79.8
ISO 3046-2 gross .....	57.8	77.5	62.0	83.1
EEC 80/1269 .....	55.8	74.8	59.5	79.8
BASU 141(a) gross .....	56.7	76.0	60.8	81.5
DIN 70020/6 .....	57.7	77.4	61.7	82.7

Percent torque rise (Net)

Naturally Aspirated .....	16.1
Turbocharged .....	25.2

Caterpillar® 3054 four-stroke-cycle diesel engine with four cylinders, **100 mm/3.94" bore, 127 mm/5.0" stroke** and **4.0 liter/243 cu. in.** displacement.

Dry-type, slip-fit liners — pre-finished for ease of run-in and service replacement.

Cast-iron sump — resists impact damage. Steel-backed aluminum bearings. Heat-treated crankshaft. Pressure lubrication with full flow filtered oil. Dry-type air cleaner with primary and secondary elements and pre-cleaner. Separate fuel filter and water separator. Direct-electric, 12-volt starting system with 52-amp alternator and pre-heat thermal starting aid. Choice of one or two maintenance-free batteries with 700 cold cranking amps.



## Hydraulic system

Variable-flow, closed-center load-sensing hydraulic system provides full hydraulic force to cutting edges at all engine speeds, low fuel consumption and low effort controls.

Type ..... Closed-center  
Pump type ..... Variable-flow, axial-piston  
Pump capacity ..... **157 l/min/41 gpm** at 2200 RPM  
System pressure ..... **27 570 kPa/206 bar/3000 psi**



## ROPS

ROPS canopy is standard.

ROPS (Rollover Protective Structure) offered by Caterpillar for this machine meets ROPS criteria SAE J394, SAE J1040 APR88 and ISO 3471-1986. It also meets FOPS (Falling Object Protective Structure) criteria SAE J231 and ISO 3449-1984.



## Cab

When properly installed and maintained, cab offered by Caterpillar, when tested with doors and windows closed as per work cycle procedures specified in ANSI/SAE J1166 MAY90, results in an operator sound exposure  $L_{eq}$  (equivalent sound pressure level) of 80.5 dB (A).

This operator A-weighted sound exposure level can be used in conjunction with OSHA, MSHA and EEC Occupational Noise Exposure Criteria. Also, when tested as per the static specifications of 86/662/EEC and dynamic specifications of 89/514/EEC, the respective operator sound pressure levels are 79.0 and 81.5 dB (A).



## Transmission

Four speeds forward and reverse power shuttle — full synchronesh in all gears. Constant-mesh gears on all ratios permit on-the-go shifting of all gears — up or down. Neutral start provision prevents starting machine while shuttle is engaged.

### Transmission Disconnect

Hand-operated power disconnect (no clutch) for on-the-go shifting and full engine RPM for faster cycle times.

### Torque Converter

Single stage, 2.21:1 stall ratio.

### Forward/Reverse Power Shuttle

Conveniently placed, hand-operated lever provides instant on-the-go direction changes between forward and reverse with power hydraulic clutches.

### Travel Speeds

Travel speeds of two-wheel drive backhoe loader at full throttle when equipped with 16.9-24" rear tires.

	1st	2nd	3rd	4th
Forward Km/H	6.2	11.4	21.5	32.4
MPH	3.9	7.0	13.3	20.1
Reverse Km/H	6.2	11.5	21.6	32.6
MPH	3.9	7.1	13.4	20.3



## Brakes

**Service** — Two fully enclosed, hydraulically applied oil-disc brakes on final drive input shaft. Foot-operated, brake pedals can be interlocked for loading or used independently in working applications.

**Parking-secondary** — Independent system from the service brakes. Caliper type disk brake on the input shaft. Brake is mechanically applied through hand lever in the operator compartment.

# ...And In Many Other Different Ways.

## Bringing new meaning to 'versatility,' to expand your business options.

Backhoe buckets have been specially redesigned for more-efficient digging and dumping. And buckets have been beefed up to handle higher digging forces. Bucket sizes from 12 in. to 36 in. (300 mm to 900mm)—and including standard, heavy duty, high capacity and extreme service—expand the industry's broadest line of backhoe bucket options.

You can also choose from a variety of tooth and cutting edge options, to match your business needs.

But these are merely the beginning.

## Over 150 buckets, tools and attachments.

A full range of attachments for both your backhoe and loader is also available through your CAT dealer ...to help you handle many more jobs—easily, quickly and profitably.

Pallet forks, brooms, blades, hydraulic hammers, asphalt cutters, shears, post hole augers, grapples, sweepers, compactors—just some of the choices you have.

Put a Quick Coupler at each end, and you can switch most backhoe or loader attachments without leaving your seat!

And in those cases where extra hydraulics are required, the Caterpillar universal lines group, auxiliary valves and controls—with advice from your CAT dealer—provide an easy answer.

It all adds up to new opportunities for new business profits for you.



Add a Quick Coupler and you can switch most attachments without leaving the operator's seat.



Sweep streets, parking lots and more when your loader bucket's replaced with a hydraulic broom—complete with water system.



Wrist action with a CAT swinger coupler lets you handle slope work with ease and speed.



Break up concrete and handle other demolition work with a hydraulic hammer.



Frozen ground? Rocky soil? Put powerful CAT hydraulics behind a ripper bucket—and get the job done.



# CAT Means Business On The Loader End

Imagine the best loader in its class getting even better.

Then step aboard a CAT B-Series backhoe loader and see for yourself.

Hit the job with 10% greater lift forces and 19% more breakout force; see how those hydraulics help you move smoother, too.

Enjoy the speed and ease of a transmission that acts like it reads your mind.—And fast cycle times with a return-to-dig that does the thinking for you.

It's easy to keep an eye on the bucket, thanks to divergent loader arms—and a single tilt cylinder that also offers fewer service and wear points, with well protected cylinder hoses.

Truck loading, backfilling, line grading—you name it—the loader end of this backhoe loader is all business, too.



# With Ease And Speed.

## Strong, efficient hydraulic power.

CAT load-sensing hydraulics match power to demand for you—without wasted fuel, engine power or typical wear.

You don't have to work quite as hard when you work on a CAT backhoe loader. Nor do your engine, hydraulic pump or other system components.

Unlike competitive open-center systems that have to run full-tilt, full time, CAT closed-center hydraulics can "feel" when and where force is needed. And automatically deliver power on-demand to match that need.

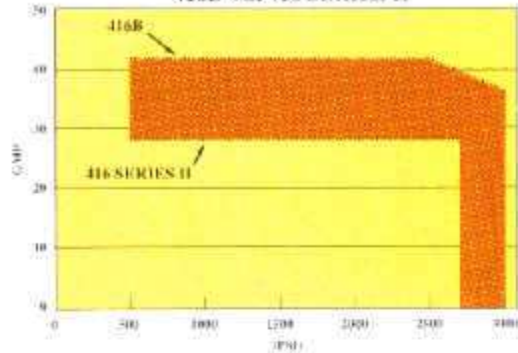
## Full forces at any engine speed.

There's no delay—the power is instant—and you're never short-changed, because oil is already "poised" in the system, ready to respond with the flow and pressure needed, with no waste.

And there's no need to rev up the engine to reach that pressure; it doesn't have to run at full load. You get maximum lift and dig forces at any engine speed.

Other CAT advantages: Your oil stays fresher, longer; runs cleaner. And CAT hydraulic pumps last longer than competitive gear-type pumps.

HYDRAULIC HORSEPOWER  
416B VS. 416 SERIES II



Increased flow and pressure give the 416B 44% more hydraulic power than its Series II forerunner.

## Easy does it; smooth, sure control.

Get your hands on a B-Series backhoe, however, and you'll see what "load sensing" *really* means. Not only will you have smooth, precise control, but more feedback that gives you a better feel for what's happening in the trench.

All this is also ideal when you set pipe or handle other loads, as well as trenching.

In short, if you want the best of both worlds—productivity and efficiency—CAT load-sensing hydraulics make great business sense.



# See More, Do More.

## Nothing tops an office with a view.

If you make your living on a backhoe loader, you'll love making it here.

First and foremost, you can see what you're doing. Easily, clearly. With the narrow boom that's been reduced in width by 35%. And with new silicone window joints that enhance visibility.

Here, man and machine can truly work together, thanks to ergonomic considerations incorporated into everything from seat design to location of controls, almost effortless handling and more.

There's the quiet cab, air conditioned if you wish, with adjustable upper/lower window panels that work independently.

With cab or canopy, front and rear roof extensions provide improved rain protection.

The new, 8-way adjustable seat has a ball-bearing turntable for fast, smooth actuation. And attention to detail is evident everywhere, from exterior striping and color schemes to classy interior black and grey—even the easy-to-clean floor mat.

After all, you deserve no less.



Lights like never before: Optional front and rear arrays on B-Series units double lighting capability, for nighttime visibility where and when you need it most; and roof extensions provide improved rain protection and help protect lights.

From backhoe to loader or anywhere in-between, quick and easy single-lever seat adjustment is close at hand. New seat adjusts 8-ways; and the ball-bearing turntable provides fast, smooth actuation.



# Discover The Difference In Savings.

There's a "flip side" to getting more work done: It's spending less time, effort and money in the process. And here's where you can do it.

## Discover CAT power, engineered for today.

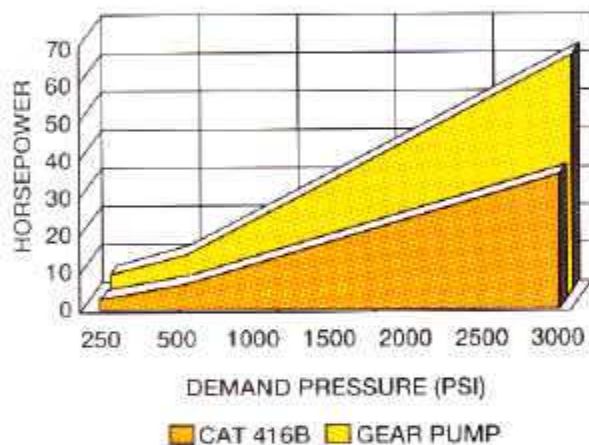
For one, you're running a CAT 3054 engine designed and built to meet specific B-Series requirements. It's an engine designed to improve fuel economy. Reduce smoke and emissions. And reduce sound levels a full 50%.

It's an ideal working partner for the B-Series closed-center hydraulic system.

Unlike competitive, constant-flow hydraulic systems that literally drain away horsepower (see chart), CAT hydraulics automatically match power to work demands. And the variable-flow pump "free wheels" when loads are light, to avoid wasting power and fuel.

What's more, your engine can deliver full hydraulic forces while running at lower rpm. When you add all this up, it's enough to save half a gallon of fuel an hour. And that can add hundreds of dollars a year to your bottom line.

WASTED HORSEPOWER/FUEL (20 GPM)



Competitive backhoe loaders can "burn" an extra 25 hp while trenching. Even though only partial flow is required to do the work, competitive systems always pump full flow at high rpm. This causes wasted power and fuel—keeping fuel bills up and usable horsepower down.

## Long life, low maintenance, better reliability. Everywhere you look.

Fact is, you get many features that help you save even more.

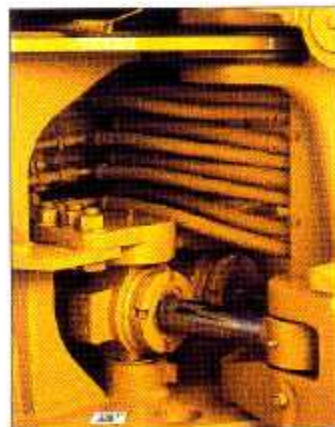
Like 54 fewer hydraulic connections than Series II backhoe loaders—a reduction of almost 25%! The most leak-free backhoe loader in the business just got better. And B-Series backhoe hoses are tucked neatly into the base of the boom. Easy to access. Nicely protected.

And CAT's patented XT hoses can withstand twice the burst pressure of competitors', to virtually eliminate downtime from hose failure. (If one does need replacing, it's fast, easy and requires no special tools.)

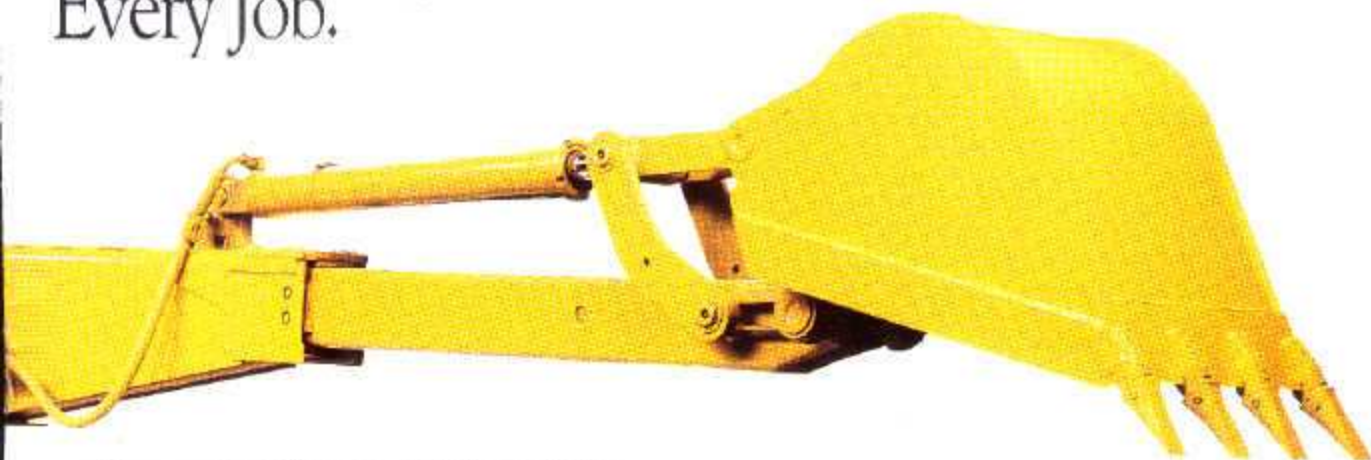
All filters are spin-on type for fast, mess-free changes.

Also, CAT couplings are equipped with rubber O-ring face seals, to further assure a virtually leak-free system.

In total, overall maintenance cost for grease, oil and filters is about 1/2 the cost of other makes.



# Every Job.



**Discover the difference with the exclusive excavator-style backhoe: Nothing else looks like it. Or works like it.**

One glance and you know it's a CAT. This excavator-style backhoe lets you reach further, dig faster and lift more. And you can keep a narrow bucket in sight since boom width is reduced 35%.

**Smooth power to move more material per day.**

You're also commanding more powerful hydraulics—up to 44% more hydraulic power than the 416 Series II backhoe. To give you more digging power, digging speed; greater breakout, greater lift.

And your control is smooth, precise. With special features designed in, that give you better "feedback" in the trench. So you can hit your mark, time after time, without slowing your pace.

**More work, more pay.**

It boils down to more jobs in less time—one way the 416B helps you make the most of every business day...and get the biggest payback for your business.

No more hit-or-miss trenching. Smooth CAT hydraulics give you precise control for working in tight spots. And more powerful hydraulics provide 12% greater bucket forces, increase stick lift 22% and speed cycle times 20%.

Model shown with optional equipment.



# 416B BACKHOE LOADER

## Optional Equipment

(with approximate change in operating weight)

	Kg	Lb		Kg	Lb
Air conditioner	45	99	Hydraulic arrangements:		
Alarm, back up (required in some countries)	1	2	3rd valve, for loader	12	26
Alternator, 90-amp	8	17	Auxiliary valve, backhoe, for stick-mounted attachments	7	15
Backhoe bucket adapter kit	31	68	Auxiliary hydraulic line:		
Backhoe control lever options (each)	9	20	to boom	4	9
Battery group, heavy duty	28	62	Light group (two front, two rear)	3	6
Buckets: backhoe (See charts)			Mirrors, outside mounted	17	37
loader, multi-purpose	142	423	Narrow gauge rear tires	—	—
Cab, ROPS (includes heater defroster and pressurizer)	257	566	Radio installation kit	3	7
Counterweight	102	225	Rotating beacon	5	11
	227	500	Sound suppression:		
	340	750	exterior	11	24
	453	1000	Stabilizer street pads	37	82
Cutting edge, bolt-on (loader bucket)	39	86	Stabilizer street pads, flip-over	88	84
Fan, operator's compartment	2	4	Static seat, vinyl	21	46
Fold over forks for MP bucket	264	582	Stick, extendable	237	522
Four-wheel drive	120	265	Suspension seat, fabric	15	33
Guards:			Teeth, GP or MP loader bucket (includes 8 bolt on unitooth)	9	20
Stabilizer cylinder	59	130	Tires (See tire sec.)		
4wd driveshaft	29	64	Turbocharger	20	45
Hydraulic lines for continuous flow attachments	93	206			

