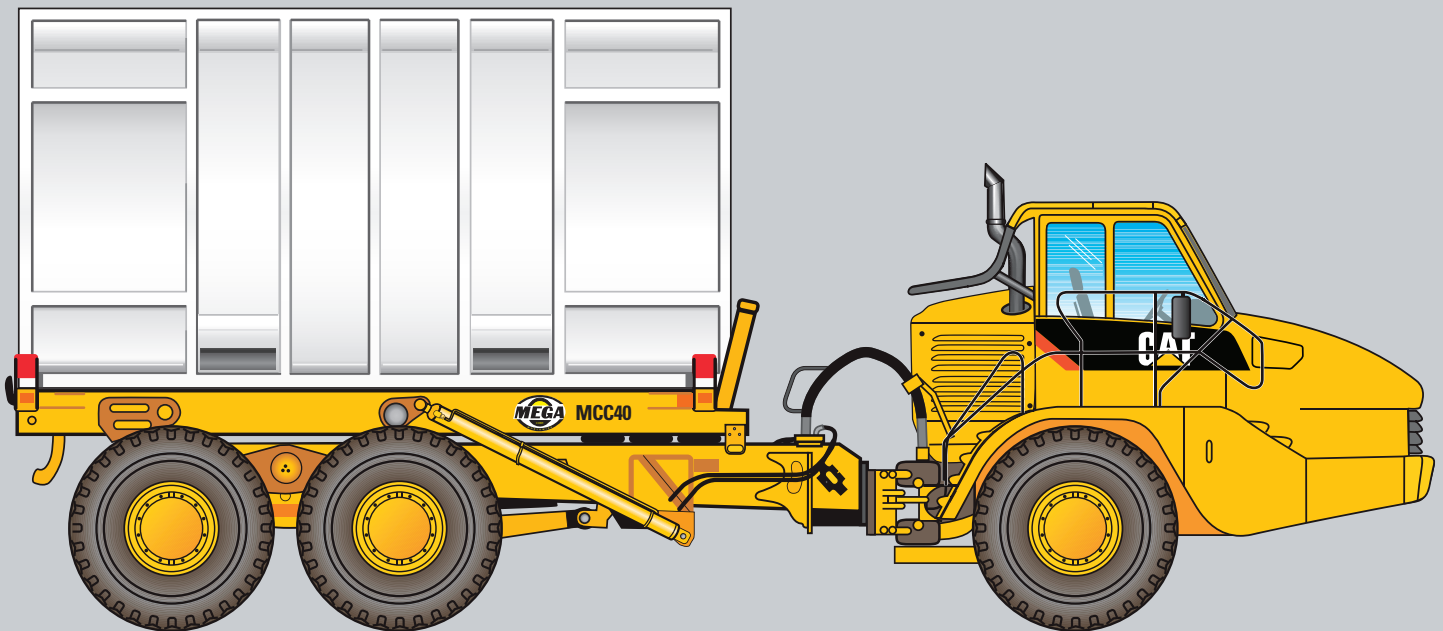


Mega MCC35 and MCC40 Articulated Container Carrier

Designed for Hauling 20 ft ISO Containers



Based on Cat® 735 and 740 Articulated Truck chassis offering proven reliability and durability, high performance and productivity, optimum payload, operator comfort and ease of operation.

ENGINE		MCC35		MCC40	
Cat® C15 ACERT™					
Gross Power — SAE J1995	324 kW	435 hp	341 kW	457 hp	
Net Power — SAE J1349	313 kW	419 hp	325 kW	436 hp	

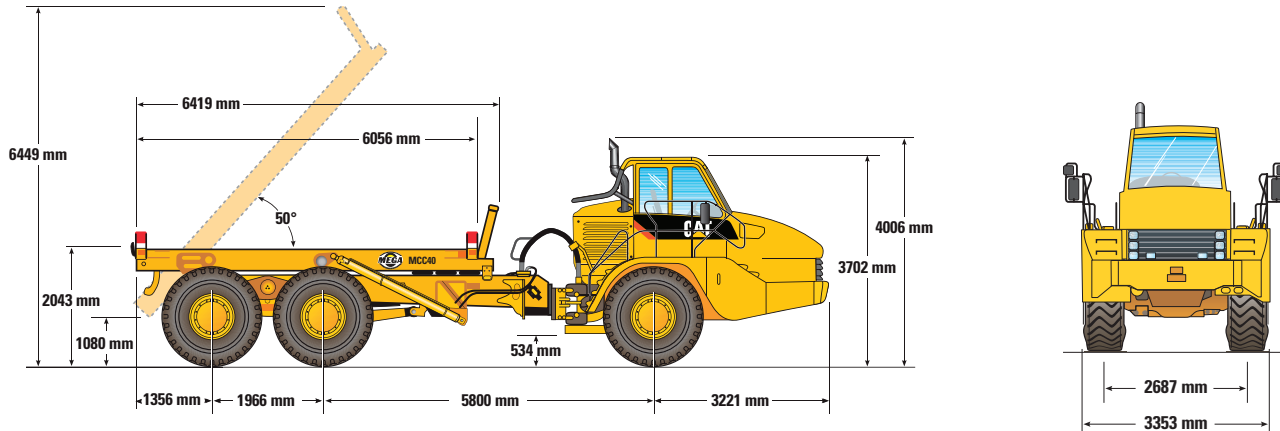
PAYLOAD		MCC35		MCC40	
Rated Payload	32 370 kg	35.7 tons	42 300 kg	46.6 tons	

CATERPILLAR®

Courtesy of Crane.Market

Mega MCC35 and MCC40 Articulated Container Carrier

DIMENSIONS



Performance and Productivity — Power Train

Cat® C15 Engine with ACERT Technology

A combination of proven systems and innovative new technologies, ACERT engines optimize performance while meeting EPA Tier 3 and EU Stage 3a engine exhaust emission regulations.

Electronic Transmission

The Caterpillar seven-speed forward and two-speed reverse, electronically controlled transmission is designed specifically for the articulated truck and its applications. It features anti-hunt shift strategy for speed continuity.

Optimum Payload

Long wheel base rear frame allows maximum axle loading for optimal payload; equates to more material being moved and a more productive and profitable operation.

Suspension and Traction Control

Three-point front suspension and cross-axle differential locking system provide maximum performance in the most adverse conditions.

Operator Comfort and Ease of Operation

Exceptional operator comfort and productivity — large center-mounted cab; excellent, all-around visibility; oscillating front axle; air-suspension seat; full-size trainer seat; and ergonomic design for simple, easy operation.

Container Frame

Safety

- Headboard for container frame
- Interlock to prevent dumping container if all locks not engaged
- Light in dash to confirm all container locks engaged

Ease of Operation:

- Robust container corner guides
- Cab actuated hydraulic container twistlocks reliable in diverse conditions
- Programmable automated lift/pause/dump sequence
- Optional hydraulic tailgate locking mechanism (stinger)

OPERATING WEIGHTS	MCC35		MCC40	
Front Axle — Empty	18 300 kg	40,300 lb	19 600 kg	43,100 lb
Center Axle — Empty	6200 kg	13,600 lb	6800 kg	15,000 lb
Rear Axle — Empty	5600 kg	12,300 lb	6100 kg	13,400 lb
Total — Empty	30 100 kg	66,200 lb	32 500 kg	71,500 lb
Front Axle — Rated Load	3300 kg	7,200 lb	4900 kg	10,800 lb
Center Axle — Rated Load	14 570 kg	32,100 lb	18 700 kg	41,100 lb
Rear Axle — Rated Load	14 500 kg	31,900 lb	18 700 kg	41,100 lb
Total — Rated Load	32 370 kg	71,200 lb	42 300 kg	93,000 lb
Front Axle — Loaded	21 600 kg	47,500 lb	24 500 kg	53,900 lb
Center Axle — Loaded	20 770 kg	45,700 lb	25 500 kg	56,100 lb
Rear Axle — Loaded	20 100 kg	44,200 lb	24 800 kg	54,500 lb
Total — Loaded	62 470 kg	137,400 lb	74 800 kg	164,500 lb

BODY HOIST	MCC35	MCC40
Raise Time	10 seconds	12 seconds
Lower Time	6 seconds	7 seconds

Product Availability

The Mega MCC35 and MCC40 will be sold exclusively through Caterpillar Dealers. These products are tentatively expected to be available for order late 2008. Expected delivery is 2009.

Product Support

Your local Cat dealership will be with you every step of the way with unsurpassed worldwide parts support, trained technicians and customer support agreements.



Mega Corp Inc.®
All rights reserved.
www.megacorpinc.com
1-800-345-8889
505-345-2661