

# Cat<sup>®</sup> 8000

## DRAGLINE RANGE



### Specifications

#### Weights\*

Boom Length	76.2 m	250 ft
Net Weight, domestic, approximate with bucket	1 451 000 kg	3,200,000 lb
Working Weight, approximate with bucket	1 751 000 kg	3,860,000 lb
Ballast Weight, furnished by customer	300 000 kg	660,000 lb
Boom Length	83.8 m	275 ft
Net Weight, domestic, approximate with bucket	1 474 000 kg	3,250,000 lb
Working Weight, approximate with bucket	1 792 000 kg	3,950,000 lb
Ballast Weight, furnished by customer	318 000 kg	700,000 lb
Boom Length	96 m	315 ft
Net Weight, domestic, approximate with bucket	1 587 573 kg	3,500,000 lb
Working Weight, approximate with bucket	1 973 127 kg	4,350,000 lb
Ballast Weight, furnished by customer	385 554 kg	850,000 lb

\*Ballast requirements and net weight of machine varies with boom length and rated suspended load. Shipping weight subject to ±5% variance.

#### Electrical – 15.24 m (50 ft) Base

Hoist Motors	2 × 1230 kW	2 × 1,650 hp
Drag Motors	2 × 1230 kW	2 × 1,650 hp
Swing Motors	2 × 477 kW	2 × 640 hp
Walking Motors	Common shaft clutched off one drag motor	

#### Electrical – 15.6 m (51 ft) Base

Hoist Motors	2 × 1230 kW	2 × 1,650 hp
Drag Motors	2 × 1230 kW	2 × 1,650 hp
Swing Motors	4 × 373 kW	4 × 500 hp
Walking Motors	Common shaft clutched off one drag motor	

#### Base – 15.24 m (50 ft)

Outside Diameter	15.24 m	50 ft
Bearing Area	182.37 m <sup>2</sup>	1,963 ft <sup>2</sup>
Circle Rail Diameter	15.24 m	50 ft
Rollers (average diameter)	254 mm	10 in
Swing Gear (pitch diameter)	12.95 m	42 ft 6 in

#### Base – 15.6 m (51 ft)

Outside Diameter	15.6 m	51 ft
Bearing Area	189.8 m <sup>2</sup>	2,043 ft <sup>2</sup>
Circle Rail Diameter	15.24 m	50 ft
Rollers (average diameter)	260 mm	10.25 in
Swing Gear (pitch diameter)	12.95 m	42 ft 6 in

#### Walking Mounting – 15.24 m (50 ft) Base

Shoe Width and Length	2.7 m × 14.6 m	9 ft × 48 ft
Combined Bearing Area	80.3 m <sup>2</sup>	864 ft <sup>2</sup>
Overall Width Over Shoes	21.6 m	71 ft
Length of Step (approximate)	2.1 m	7 ft

#### Walking Mounting – 15.6 m (51 ft) Base

Shoe Width and Length	2.7 m × 16.8 m	9 ft × 55 ft
Combined Bearing Area	92 m <sup>2</sup>	990 ft <sup>2</sup>
Overall Width Over Shoes	21.6 m	71 ft
Length of Step (approximate)	2.1 m	7 ft

#### Revolving Frame – 15.24 m (50 ft) Base

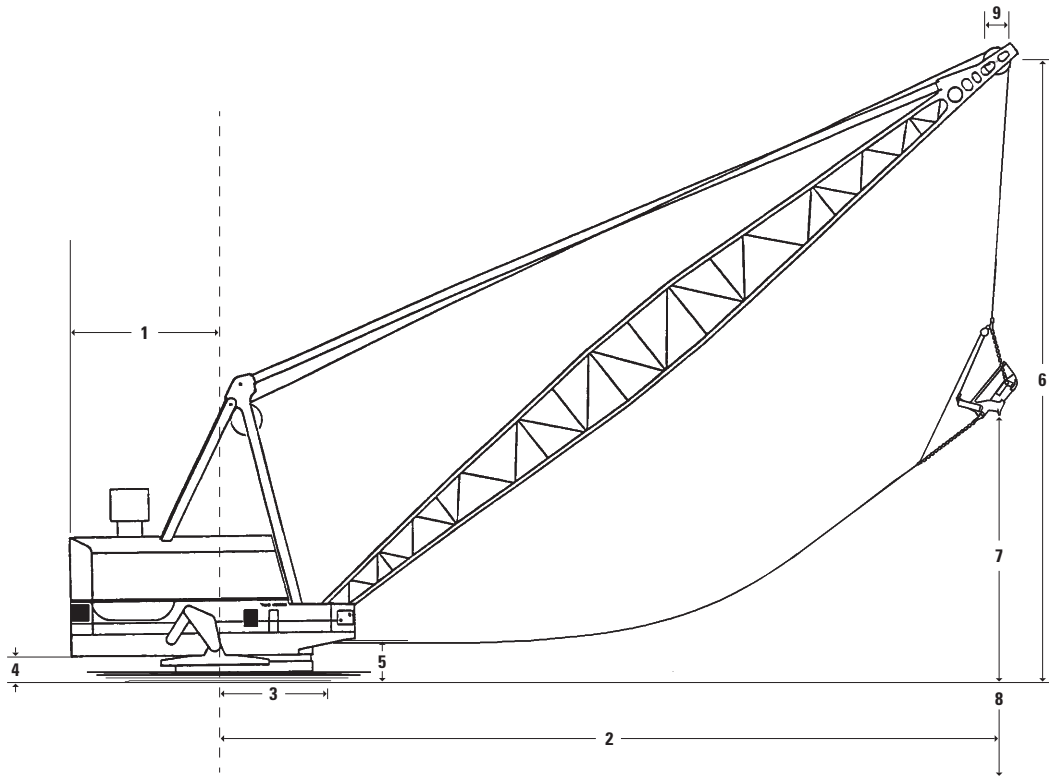
Upper Machinery Frame (width × length)	13.1 m × 22.9 m	43 ft × 75 ft
Girder Depth	2.0 m	6 ft 8 in

#### Revolving Frame – 15.6 m (51 ft) Base

Upper Machinery Frame (width × length)	13.1 m × 23.39 m	43 ft × 76 ft 9 in
Girder Depth	2.0 m	6 ft 8 in



# Dragline – 8000, Dragline Range



**Dimensions** (All dimensions are approximate.)

	15.24 m (50 ft) Base		15.6 m (51 ft) Base	
① Clearance Radius	16.3 m	53 ft 6 in	16.9 m	55 ft 3 in
③ Boom Foot Radius	6.2 m	20 ft 3 in	6.2 m	20 ft 3 in
④ Clearance Height	1.75 m	5 ft 9 in	2.3 m	7 ft 4 in
⑤ Boom Foot Height	4.1 m	13 ft 6 in	4.1 m	13 ft 6 in
⑨ Point Sheave Pitch Diameter	228.6 cm	90 in	228.6 cm	90 in

Boom Length*	Boom Angle	② Operating Radius	Rated Suspension Load	⑥ Boom Point Height		⑦ Dumping Height		⑧ Digging Depth		DRAG				HOIST								
				Rated Suspension Load		Drum Diameter		Rope Diameter		Drum Diameter		Rope Diameter										
				kg	lb	m	ft	m	ft	m	ft	cm	in	cm	in	cm	in	cm	in			
76.20	250	32	71.93	236	95 254	210,000	44.5	146	29.3	96	44.2	145	215.9	85	2	6.985	2.75	215.9	85	2	6.985	2.75
83.82	275	38	73.15	240	93 894	207,000	55.8	183	40.8	134	39.0	128	215.9	85	2	6.985	2.75	215.9	85	2	6.985	2.75
96.00	315	32	88.08	289	79 379	175,000	56.0	184	40.0	131	53.6	176	243.8	96	2	6.985	2.75	243.8	96	2	6.985	2.75

\*Note that the 83.82 m (275 ft) and 96.00 m (315 ft) boom options have a mast.

For more complete information on Cat products, dealer services, and industry solutions, visit us on the web at [www.cat.com](http://www.cat.com)

© 2014 Caterpillar  
All Rights Reserved  
Printed in U.S.A.

Materials and specifications are subject to change without notice. Featured machines in photos may include additional equipment. See your Cat dealer for available options.

CAT, CATERPILLAR, SAFETY.CAT.COM, their respective logos, "Caterpillar Yellow" and the "Power Edge" trade dress, as well as corporate and product identity used herein, are trademarks of Caterpillar and may not be used without permission.

AEHQ6867-02 (01-14)  
Replaces AEHQ6867-01