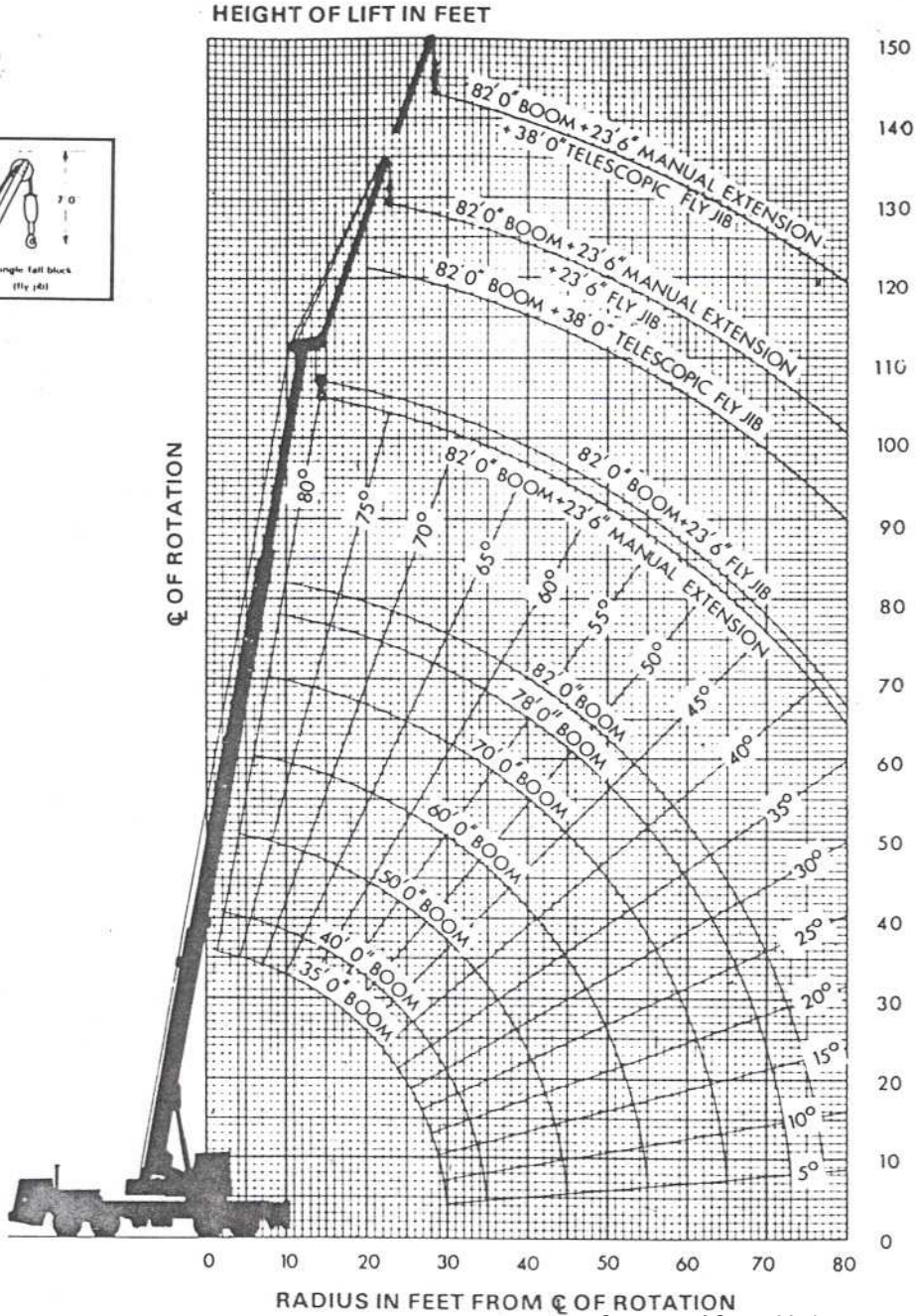
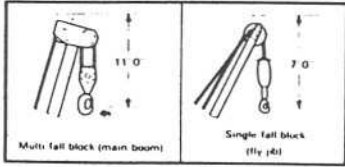
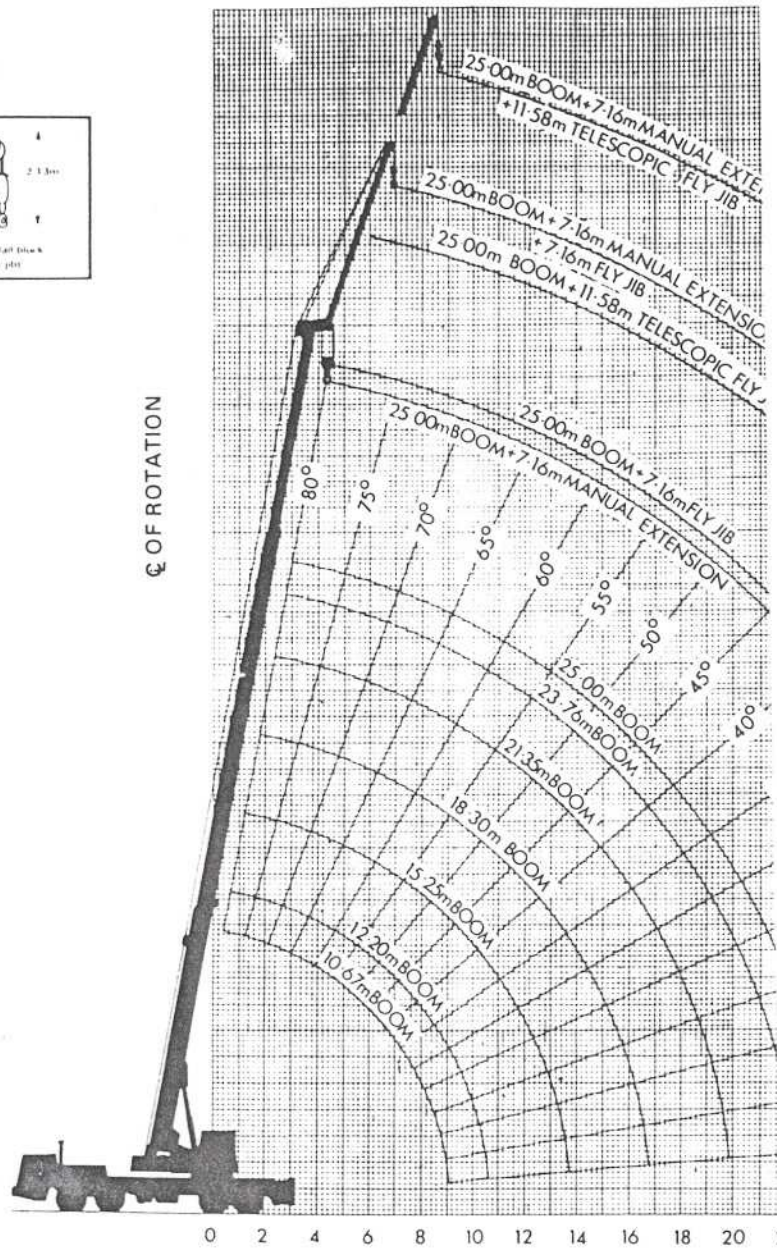
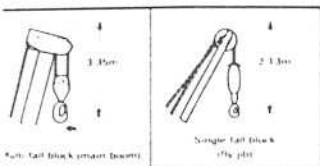


208
-56
-81

Coles 30/35



HEIGHT OF LIFT IN METRES



RADIUS IN METRES FROM C OF ROTATION

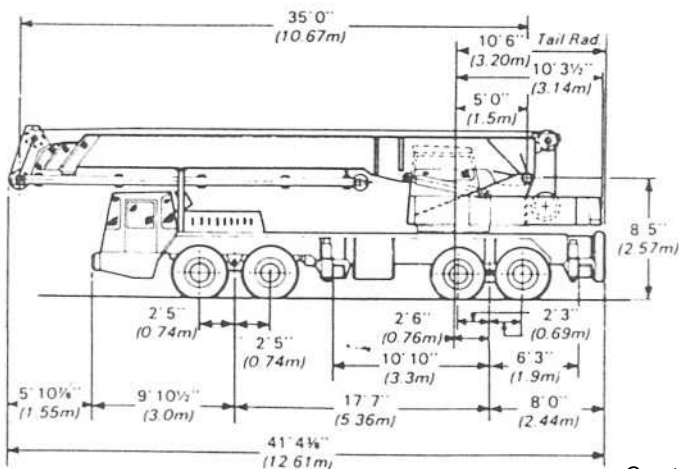
Courtesy of Crane.Market

MAIN BOOM CAPACITIES IN KILOGRAMMES OVER SIDE AND REAR — with outriggers fully extended

Radius in Metres	Boom Length										10.67m—25.0m Boom Fully telescoping Plus 7.16m Extension		
	Manual Extension Section must be fully retracted for these duties												
	10.67m— 12.2m	12.2m— 15.25m	15.25m— 18.3m		18.3m— 21.35m		21.35m— 23.76m		23.76m— 25.00m		over side	over rear	Laden Boom Angle
3.00	30500	27000											
3.50	27000	24500	23000	23000									
4.50	21000	20500	19000	19000	16150	16150							
6.00	15400	15400	15400	15400	13850	13850	10300	10300	8750	8750			
7.50	11250	11250	11250	12430	10720	10720	8250	8250	7220	7220	4380	4380	77°
9.00		7700	7800	10100	7750	7750	7320	7320	6180	6180	4120	4120	74°
10.50		5770	5960	7700	5890	7000	5870	6420	5680	5680	3870	3870	71°
12.00			4520	6120	4520	5790	4520	5630	4520	4910	3580	3580	68°
15.00					2840	4030	2840	4030	2840	3980	2990	2990	62°
18.00							1830	2750	1830	2750	2165	2215	55°
21.00									1150	1830	1490	1540	48°
24.00											1030	1135	40°

FLY JIB CAPACITIES IN KILOGRAMMES OVER SIDE AND REAR — with outriggers fully extended

Radius in Metres	10.67m—25.0m Boom Fully telescoping Plus 7.16m Fly Jib at 10° Offset			17.82m—32.15m Boom Fully telescoping Plus 7.16m Fly Jib at 10° Offset			17.82m—32.15m Boom Fully telescoping Plus 7.16m Telescopic Fly Jib at 10° Offset			17.82m—32.15m Boom Fully telescoping Plus 7.16m Telescopic Fly Jib at 10° Offset		
	over side	over rear	Laden Boom Angle	over side	over rear	Laden Boom Angle	over side	over rear	Laden Boom Angle	over side	over rear	Laden Boom Angle
9.00	4120	4120	76°									
10.50	3810	3810	73°	1800	1800	77°	1800	1800	77°			
12.00	3500	3500	70°	1630	1630	75°	1630	1630	75°			
13.50	3190	3190	67°	1540	1540	73°	1540	1540	73°	1030	1030	76°
15.00	2885	2885	64°	1420	1420	70°	1420	1420	70°	920	920	74°
18.00	2165	2265	57°	1200	1200	65°	1200	1200	56°	770	770	69°
21.00	1440	1645	50°	1100	1100	59°	1100	1100	59°	670	670	64°
24.00	930	1030	32°	975	975	53°	870	870	53°	515	515	59°

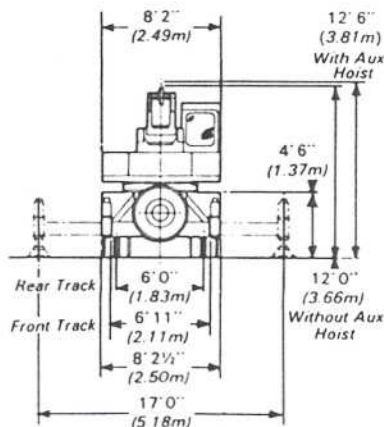


MAIN BOOM CAPACITIES IN TONS OVER SIDE AND REAR — with outriggers fully extended

Radius in Feet	Boom Length										35'0" — 82'0" Boom fully telescoping with 23'6" Extension		
	Manual Extension Section must be fully retracted for these duties												
	35'0" — 40'0"	40'0" — 50'0"	50'0" — 60'0"		60'0" — 70'0"		70'0" — 78'0"		78'0" — 82'0"		over side	over rear	Laden Boom Angle
10'0"	30.00	26.50											
12'0"	25.50	23.50	22.00	22.00									
15'0"	20.50	20.00	18.50	18.50	15.75	15.75							
20'0"	15.00	15.00	15.00	15.00	13.50	13.50	10.00	10.00	8.50	8.50			
25'0"	10.90	10.90	10.90	12.00	10.40	10.40	8.00	8.00	7.00	7.00	4.25	4.25	77°
30'0"		7.40	7.50	9.75	7.35	7.35	7.10	7.10	6.00	6.00	4.00	4.00	74°
35'0"		5.40	5.60	7.35	5.63	6.85	5.63	6.25	5.50	5.50	3.75	3.75	71°
40'0"			4.26	5.85	4.26	5.55	4.26	5.45	4.26	4.75	3.50	3.50	68°
50'0"					2.68	3.85	2.68	3.85	2.68	3.85	2.90	2.90	62°
60'0"							1.72	2.60	1.72	2.60	2.10	2.15	55°
70'0"									1.05	1.70	1.45	1.50	47°
80'0"											1.00	1.10	39°

FLY JIB CAPACITIES IN TONS OVER SIDE AND REAR — with outriggers fully extended

Radius in Feet	35'0" — 82'0" Boom Fully telescoping Plus 23'6" Fly Jib at 10° Offset			58'6" — 105'6" Boom Fully telescoping Plus 23'6" Fly Jib at 10° Offset			58'6" — 105'6" Boom Fully telescoping Plus 23'6" Telescopic Fly Jib at 10° Offset			58'6" — 105'6" Boom Fully telescoping Plus 40'0" Telescopic Fly Jib at 10° Offset		
	over side	over rear	Laden Boom Angle	over side	over rear	Laden Boom Angle	over side	over rear	Laden Boom Angle	over side	over rear	Laden Boom Angle
30'0"	4.00	4.00	76°									
35'0"	3.70	3.70	73°	1.75	1.75	77°	1.75	1.75	77°			
40'0"	3.40	3.40	70°	1.60	1.60	75°	1.60	1.60	75°			
45'0"	3.10	3.10	67°	1.50	1.50	73°	1.50	1.50	73°	1.00	1.00	76°
50'0"	2.80	2.80	64°	1.40	1.40	70°	1.40	1.40	70°	0.90	0.90	74°
60'0"	2.10	2.25	57°	1.20	1.20	65°	1.20	1.20	65°	0.75	0.75	69°
70'0"	1.40	1.40	49°	1.10	1.10	59°	1.10	1.10	59°	0.65	0.65	64°
80'0"	0.90	1.00	30°	0.95	0.95	53°	0.85	0.85	53°	0.50	0.50	59°



P.R. tyres increases heights by 1" (0.02m)