

0344 200 200  
3 1 2 3 4 5 6 7 8 9 10 11 12

# Demag AC 40-1

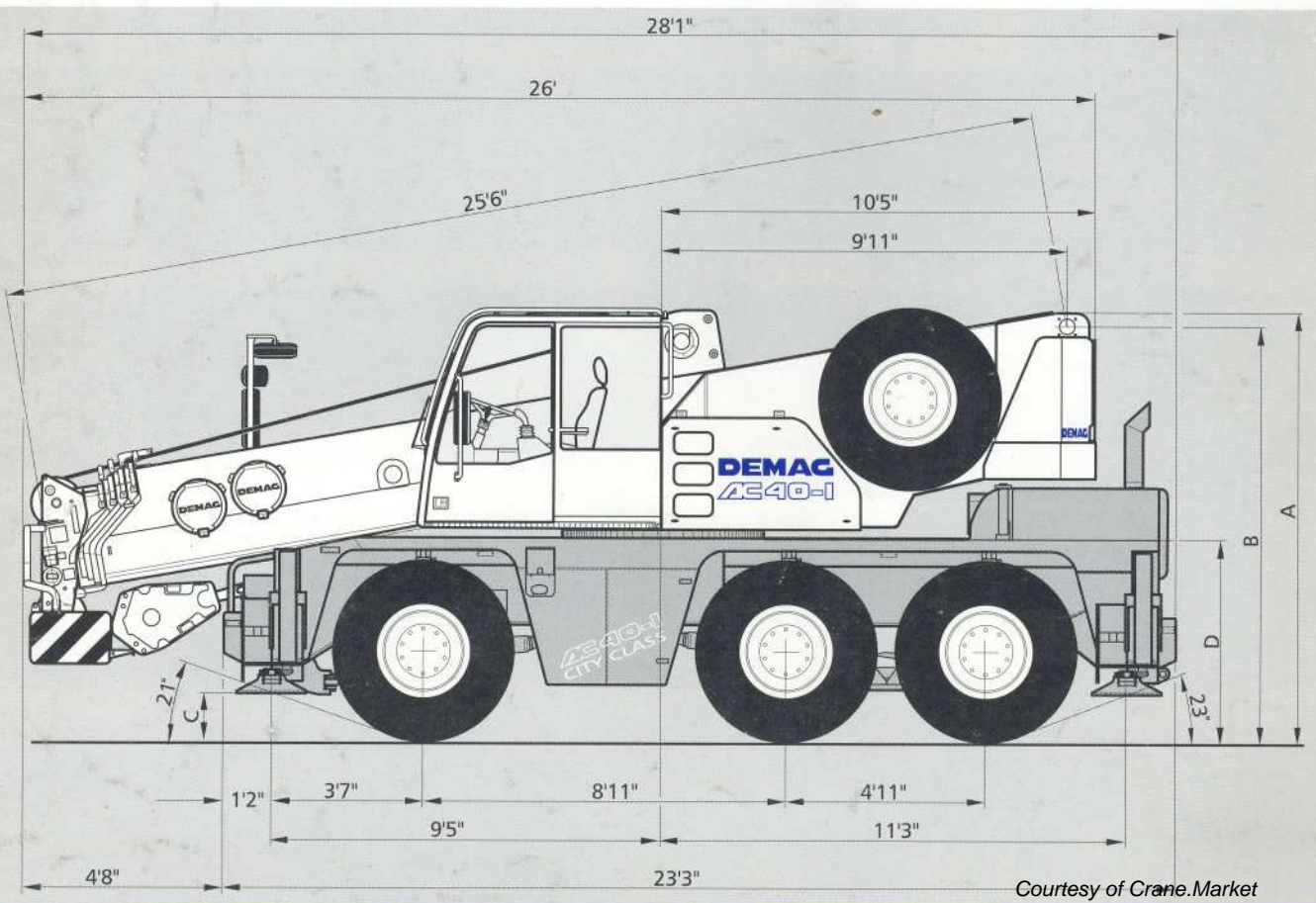
**ABS**  
AS STANDARD

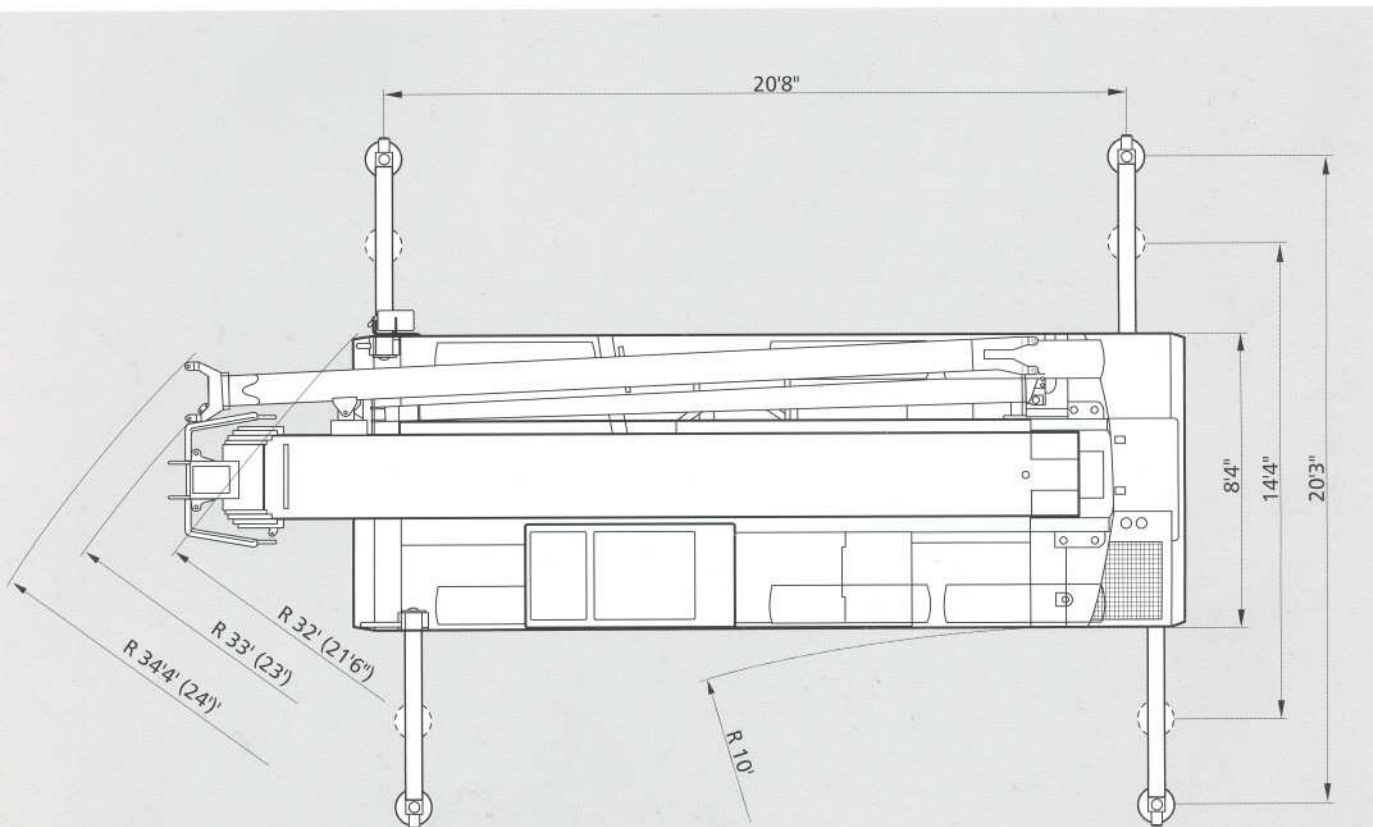
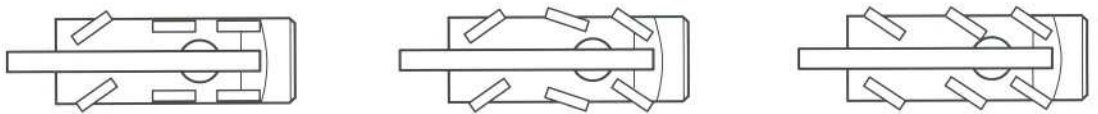


**45t**

# Dimensions

Type of tires	Level	A	B	C	D
14.00	Road	10'5"	10'1"	1'2"	4'9"
14.00	Lowered	10'2"	9'9"	9"	4'6"
445 / 65	Road	10'1"	9'8"	8"	4'5"
445 / 65	Lowered	9'8"	9'5"	5"	4'2"







( ) with independent rear axle steering







# Lifting capacities main boom

		 20'10" x 20'4" 360°							DIN/ISO
		Main boom							
Radius	ft	25.6	35.1	44.6	64.0	83.0	93.2	102.3	
	ft	1,000 lb							
8		90.0*	-	-	-	-	-	-	
10		88.0*	-	-	-	-	-	-	
10		75.2	55.1	46.2	-	-	-	-	
11		72.6	55.1	46.2	-	-	-	-	
13		67.5	55.1	46.2	35.4	-	-	-	
15		53.4	54.7	45.3	35.2	-	-	-	
16		-	53.4	43.9	35.2	-	-	-	
19		-	46.4	40.2	35.2	31.2	-	-	
23		-	37.1	35.2	33.7	29.0	24.4	-	
26		-	-	34.0	31.0	27.0	23.8	19.8	
29		-	-	28.7	27.7	25.0	22.5	19.4	
33		-	-	22.4	22.5	22.5	20.6	18.2	
39		-	-	-	18.0	17.0	16.9	16.2	
46		-	-	-	13.8	12.9	13.2	12.9	
52		-	-	-	11.4	11.1	10.9	10.5	
59		-	-	-	-	9.4	8.8	8.3	
65		-	-	-	-	7.8	7.6	6.9	
72		-	-	-	-	6.6	6.2	5.7	
79		-	-	-	-	-	4.8	4.5	
85		-	-	-	-	-	-	3.7	
92		-	-	-	-	-	-	3.0	
Capacities <sup>1)</sup>		44.0	30.8	19.4	9.9	5.5	3.9	2.4	

		 0°*			DIN/ISO
		Main boom			
Radius	ft	25.6	35.1	44.6	
	ft	1,000 lb			
8		-	-	-	
10		-	-	-	
10		31.6	30.5	32.9	
11		29.4	28.3	30.6	
13		25.5	24.6	26.8	
15		19.6	21.7	23.9	
16		-	20.3	22.5	
19		-	17.2	19.2	
23		-	13.3	15.8	
26		-	-	13.2	
29		-	-	10.9	
33		-	-	9.0	
39		-	-	-	
46		-	-	-	
52		-	-	-	
59		-	-	8.8	
65		-	-	8.3	
72		-	-	7.6	
79		-	-	6.9	
85		-	-	6.2	
92		-	-	5.7	
Capacities <sup>1)</sup>		17.6	8.8	6.6	

		 20'10" x 7'8" 360°				DIN/ISO
		Main boom				
Radius	ft	25.6	35.1	44.6	64.0	
	ft	1,000 lb				
13		26.5	25.0	28.1	28.7	
15		18.5	19.8	22.6	23.3	
16		-	17.7	20.4	21.1	
19		-	13.4	15.7	16.4	
23		-	9.3	11.6	12.1	
26		-	-	9.6	10.0	
29		-	-	8.1	8.6	
33		-	-	6.4	6.9	
39		-	-	-	5.1	
46		-	-	-	3.7	
52		-	-	-	2.9	
Capacities <sup>1)</sup>		17.6	6.1	4.6	-	

		 360°**			DIN/ISO
		Main boom			
Radius	ft	25.6	35.1	44.6	
	ft	1,000 lb			
13		-	-	-	
15		11.1	11.6	14.2	
16		-	10.7	13.2	
19		-	8.4	10.8	
23		-	6.1	8.3	
26		-	-	6.9	
29		-	-	5.9	
33		-	-	4.8	
39		-	-	-	
46		-	-	-	
52		-	-	-	
Capacities <sup>1)</sup>		10.6	4.2	2.9	

## Remarks

- \* 0° over rear
- \*\* only stationary
- 1) with horizontal boom



20'10" x 14'5"

360°

DIN/ISO

Main boom

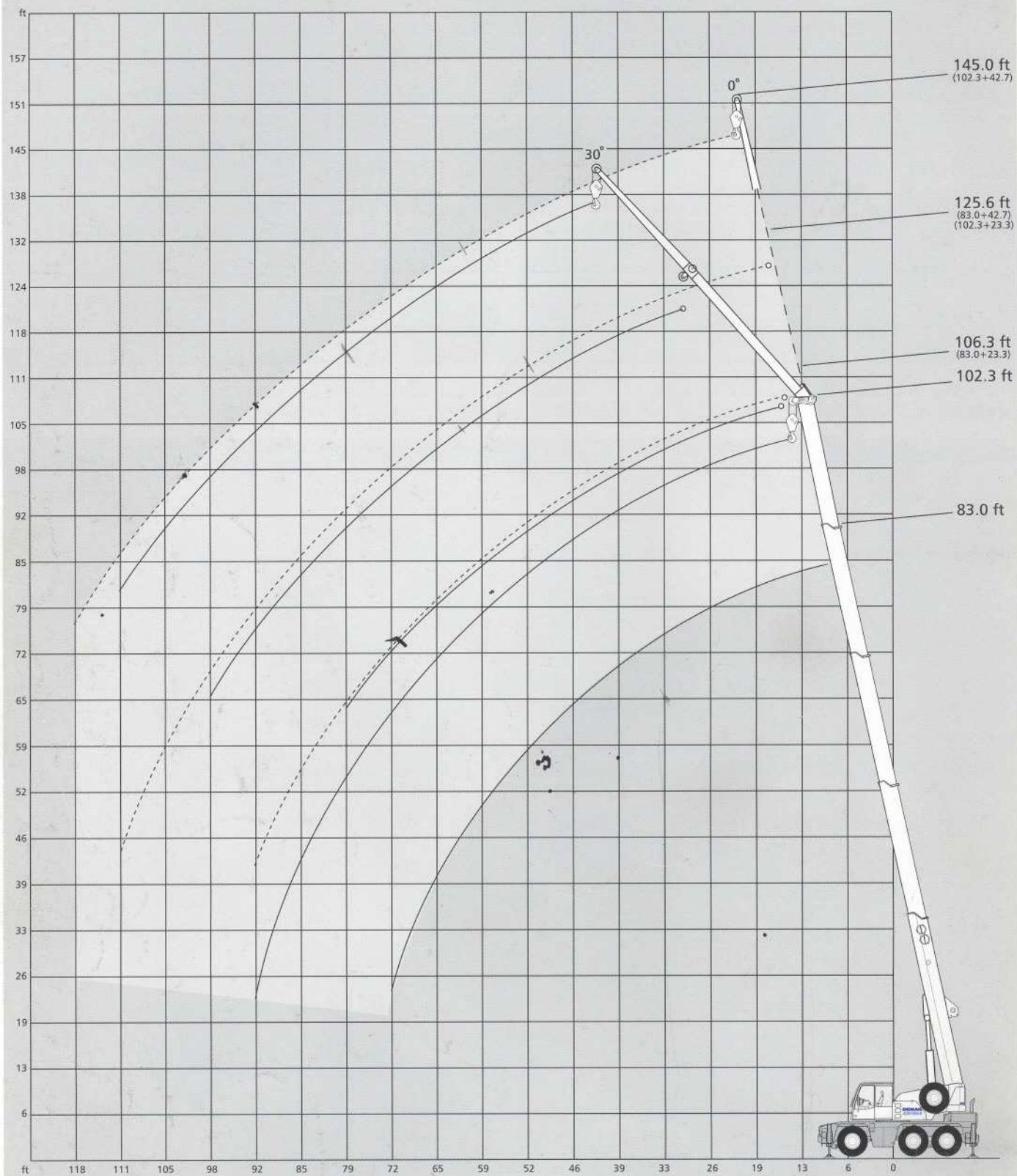
Radius	ft	25.6	35.1	44.6	64.0	83.0	93.2	102.3	Radius
ft					1,000 lb				ft
10		74.9	55.1	46.2	-	-	-	-	10
11		70.7	55.1	46.2	-	-	-	-	11
13		62.8	55.1	46.2	35.4	-	-	-	13
15		44.9	49.2	44.7	35.2	-	-	-	15
16		-	43.0	41.1	35.2	-	-	-	16
19		-	31.1	32.4	32.1	31.2	-	-	19
23		-	21.3	24.4	25.0	23.9	23.7	-	23
26		-	-	19.9	20.6	19.5	19.5	19.6	26
29		-	-	16.6	17.3	17.2	16.8	16.4	29
33		-	-	13.2	14.0	14.2	13.7	13.3	33
39		-	-	-	10.7	11.0	10.5	10.1	39
46		-	-	-	8.1	8.3	7.9	7.4	46
52		-	-	-	6.7	6.7	6.3	6.0	52
59		-	-	-	-	5.5	5.0	4.6	59
65		-	-	-	-	4.7	4.0	3.8	65
72		-	-	-	-	3.7	3.3	2.8	72
79		-	-	-	-	-	2.6	2.1	79
85		-	-	-	-	-	-	1.7	85
92		-	-	-	-	-	-	1.3	92
Capacities <sup>1)</sup>		44.1	15.4	11.4	5.5	3.3	1.7	-	Capacities <sup>1)</sup>

## Remarks

<sup>1)</sup> with horizontal boom



# Working ranges main boom extension



# Lifting capacities main boom extension



20'10" x 20'4"

360°

DIN/ISO



20'10" x 14'5"

360°

DIN/ISO

## 83.0 ft Main boom

Radius ft	23.3 ft		Extension 1,000 lb	42.7 ft	
	0°	30°		0°	30°
	26	14.3	-	-	-
29	13.7	-	-	-	
33	12.9	9.2	7.9	-	
39	11.9	8.8	7.3	-	
46	10.7	8.3	6.6	-	
52	9.9	8.1	6.2	4.8	
59	8.8	7.7	5.7	4.6	
65	7.4	7.5	5.3	4.4	
72	6.2	6.4	5.0	4.1	
79	5.0	5.2	4.6	4.1	
85	4.2	-	4.4	3.9	
92	3.5	-	3.7	3.9	
98	-	-	3.3	3.5	
105	-	-	2.6	-	
111	-	-	2.2	-	

## 83.0 ft Main boom

Radius ft	23.3 ft		Extension 1,000 lb	42.7 ft	
	0°	30°		0°	30°
	26	14.3	-	-	-
29	13.7	-	-	-	
33	12.9	9.2	7.9	-	
39	10.5	8.8	7.3	-	
46	7.9	8.3	6.6	-	
52	6.3	6.9	6.2	4.8	
59	5.0	5.5	5.2	4.6	
65	4.0	4.5	4.2	4.4	
72	3.3	3.5	3.5	4.1	
79	2.6	2.8	2.8	3.5	
85	2.0	-	2.2	2.8	
92	1.5	-	1.7	2.1	
98	-	-	1.3	1.7	
105	-	-	-	-	
111	-	-	-	-	

## 102.3 ft Main boom

33	11.0	-	-	-
39	10.6	8.6	6.6	-
46	10.1	8.1	6.3	-
52	9.7	7.7	6.1	-
59	8.8	7.2	5.9	4.6
65	7.4	6.8	5.5	4.4
72	5.9	6.4	5.2	4.1
79	4.8	5.2	4.8	4.1
85	4.0	4.4	4.2	3.9
92	3.2	3.5	3.5	3.9
98	2.6	2.9	2.9	3.5
105	1.9	-	2.4	2.8
111	1.5	-	2.0	2.2
118	-	-	1.5	-

## 102.3 ft Main boom

33	10.9	-	-	-
39	10.1	8.6	6.6	-
46	7.7	8.1	6.3	-
52	6.2	6.9	6.1	-
59	4.8	5.5	5.0	4.6
65	3.8	4.5	4.0	4.4
72	3.1	3.5	3.3	3.9
79	2.3	2.8	2.6	3.2
85	1.7	2.2	2.0	2.6
92	1.3	1.5	1.5	2.1
98	-	-	-	1.5
105	-	-	-	-
111	-	-	-	-
118	-	-	-	-





# Lifting capacities runner

 20'10" x 20'4" 360°

DIN/ISO

		Main boom							
Radius	ft	25.6	35.1	44.6	64.0	83.0	93.2	102.3	
ft		1,000 lb							ft
10		33.0 <sup>1)</sup>	33.0 <sup>1)</sup>	33.0 <sup>1)</sup>	-	-	-	-	10
11		33.0 <sup>1)</sup>	33.0 <sup>1)</sup>	33.0 <sup>1)</sup>	-	-	-	-	11
13		33.0 <sup>2)</sup>	33.0 <sup>1)</sup>	33.0 <sup>1)</sup>	-	-	-	-	13
15		33.0 <sup>2)</sup>	33.0 <sup>1)</sup>	33.0 <sup>1)</sup>	33.0 <sup>1)</sup>	-	-	-	15
16		33.0 <sup>3)</sup>	33.0 <sup>1)</sup>	33.0 <sup>1)</sup>	33.0 <sup>1)</sup>	-	-	-	16
19		-	33.0 <sup>1)</sup>	33.0 <sup>1)</sup>	32.1 <sup>1)</sup>	-	-	-	19
23		-	33.0 <sup>2)</sup>	33.0 <sup>1)</sup>	29.9 <sup>1)</sup>	26.2 <sup>1)</sup>	-	-	23
26		-	31.2 <sup>3)</sup>	33.0 <sup>1)</sup>	27.7 <sup>1)</sup>	24.4 <sup>1)</sup>	21.7 <sup>1)</sup>	-	26
29		-	-	28.3 <sup>2)</sup>	25.8 <sup>1)</sup>	22.7 <sup>1)</sup>	20.3 <sup>1)</sup>	18.4 <sup>1)</sup>	29
33		-	-	22.4 <sup>2)</sup>	22.5 <sup>1)</sup>	20.8 <sup>1)</sup>	18.8 <sup>1)</sup>	17.1 <sup>1)</sup>	33
39		-	-	-	16.8 <sup>1)</sup>	16.9 <sup>1)</sup>	16.8 <sup>1)</sup>	15.1 <sup>1)</sup>	39
46		-	-	-	13.6 <sup>2)</sup>	12.7 <sup>1)</sup>	12.7 <sup>1)</sup>	12.7 <sup>1)</sup>	46
52		-	-	-	11.2 <sup>3)</sup>	10.1 <sup>1)</sup>	10.7 <sup>1)</sup>	10.3 <sup>1)</sup>	52
59		-	-	-	-	8.8 <sup>2)</sup>	8.6 <sup>1)</sup>	8.1 <sup>1)</sup>	59
65		-	-	-	-	7.6 <sup>2)</sup>	7.2 <sup>2)</sup>	6.5 <sup>1)</sup>	65
72		-	-	-	-	6.4 <sup>3)</sup>	5.7 <sup>2)</sup>	5.1 <sup>2)</sup>	72
79		-	-	-	-	-	4.6 <sup>3)</sup>	4.1 <sup>2)</sup>	79
85		-	-	-	-	-	3.9 <sup>3)</sup>	3.3 <sup>2)</sup>	85
92		-	-	-	-	-	-	2.6 <sup>3)</sup>	92
Capacities <sup>4)</sup>		33.0 <sup>2+3)</sup>	24.2 <sup>2+3)</sup>	16.5 <sup>2+3)</sup>	8.3 <sup>2+3)</sup>	4.8 <sup>2+3)</sup>	3.0 <sup>2+3)</sup>	1.7 <sup>2+3)</sup>	Capacities <sup>4)</sup>

 20'10" x 14'5" 360°

DIN/ISO

		Main boom							
Radius	ft	25.6	35.1	44.6	64.0	83.0	93.2	102.3	
ft		1,000 lb							ft
10		33.0 <sup>1)</sup>	33.0 <sup>1)</sup>	33.0 <sup>1)</sup>	-	-	-	-	10
11		33.0 <sup>1)</sup>	33.0 <sup>1)</sup>	33.0 <sup>1)</sup>	-	-	-	-	11
13		33.0 <sup>2)</sup>	33.0 <sup>1)</sup>	33.0 <sup>1)</sup>	-	-	-	-	13
15		33.0 <sup>2)</sup>	33.0 <sup>1)</sup>	33.0 <sup>1)</sup>	33.0 <sup>1)</sup>	-	-	-	15
16		33.0 <sup>3)</sup>	33.0 <sup>1)</sup>	33.0 <sup>1)</sup>	33.0 <sup>1)</sup>	-	-	-	16
19		-	30.1 <sup>1)</sup>	32.5 <sup>1)</sup>	32.0 <sup>1)</sup>	-	-	-	19
23		-	21.9 <sup>2)</sup>	24.6 <sup>1)</sup>	24.1 <sup>1)</sup>	24.1 <sup>1)</sup>	-	-	23
26		-	17.7 <sup>3)</sup>	20.0 <sup>1)</sup>	20.5 <sup>1)</sup>	19.5 <sup>1)</sup>	19.4 <sup>1)</sup>	-	26
29		-	-	16.8 <sup>2)</sup>	17.3 <sup>1)</sup>	16.4 <sup>1)</sup>	16.5 <sup>1)</sup>	16.2 <sup>1)</sup>	29
33		-	-	13.2 <sup>2)</sup>	14.0 <sup>1)</sup>	14.2 <sup>1)</sup>	13.5 <sup>1)</sup>	13.1 <sup>1)</sup>	33
39		-	-	-	10.5 <sup>1)</sup>	10.7 <sup>1)</sup>	10.3 <sup>1)</sup>	9.6 <sup>1)</sup>	39
46		-	-	-	7.9 <sup>2)</sup>	8.1 <sup>1)</sup>	7.6 <sup>1)</sup>	7.2 <sup>1)</sup>	46
52		-	-	-	6.5 <sup>3)</sup>	6.5 <sup>1)</sup>	6.0 <sup>1)</sup>	5.6 <sup>1)</sup>	52
59		-	-	-	-	5.3 <sup>2)</sup>	4.6 <sup>1)</sup>	4.2 <sup>1)</sup>	59
65		-	-	-	-	4.2 <sup>2)</sup>	3.8 <sup>2)</sup>	3.3 <sup>1)</sup>	65
72		-	-	-	-	3.5 <sup>3)</sup>	2.8 <sup>2)</sup>	2.4 <sup>2)</sup>	72
79		-	-	-	-	-	2.3 <sup>3)</sup>	1.7 <sup>2)</sup>	79
85		-	-	-	-	-	1.7 <sup>3)</sup>	-	85
92		-	-	-	-	-	-	-	92
Capacities <sup>4)</sup>		33.0 <sup>2+3)</sup>	14.9 <sup>2+3)</sup>	10.5 <sup>2+3)</sup>	5.0 <sup>2+3)</sup>	2.6 <sup>2+3)</sup>	-	-	Capacities <sup>4)</sup>

## Remarks

- 1) Working range – max. offset for runner
- 2) Working range – medium offset for runner
- 3) Working range – min. offset for runner
- 4) with horizontal boom