

Denka Lift DL 22N

class 21m-24m



LIGHTEST
IN CLASS



CASE STUDY

Nature of job:

Indoor light fitting

Reason for choosing this Spider Lift:

Narrow, light, can work on finished floors

The 22m Denka was hired out to a company working on the new roof lights of the Velodrome for the 2012 London Olympics. The simple drive system meant the operator could easily move the machine to his next place of work.



Narrow areas and doorways were easy to negotiate due to the Denka's compact size of 0.89m wide x 2.1m high. The Denka DL 22N weighs only 2,350kg which made it suitable for the Velodrome's lightweight floor.



T-Bar handle

Variable jacking

Retractable axles

Outreach

KEY FEATURES

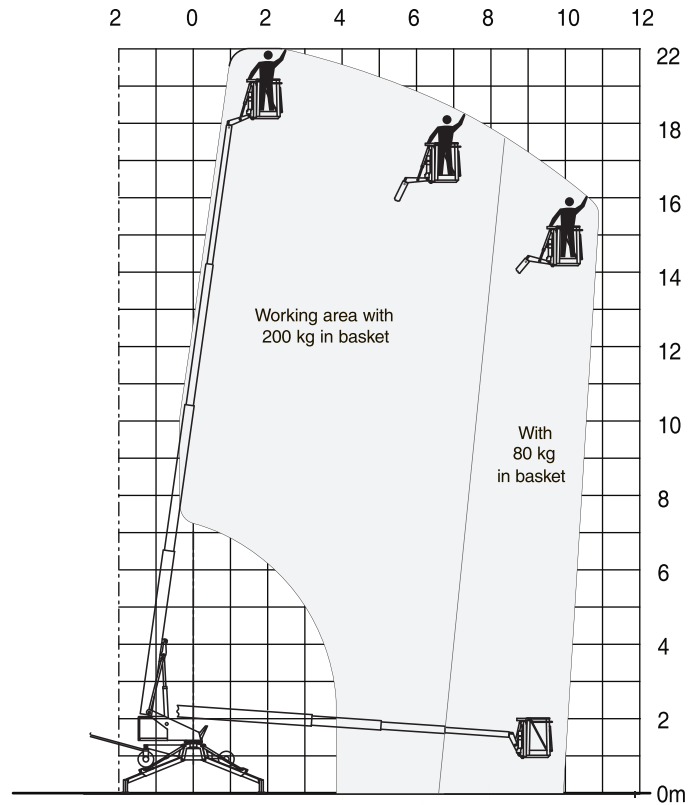
- Variable jacking:** Allows the machine to be set up in a small enclosed area.
- T-Bar handle:** Simple drive system on a T-Bar handle.
- Outreach:** As a telescopic boom this machine has an extensive outreach.
- Retracting axles:** Access to narrow openings improving versatility.

setup time
5:00 battery

WORKING HEIGHT	22.00m
WEIGHT	2,350kg
OUTREACH	12.00m
LENGTH	6.52m
WIDTH	0.89m

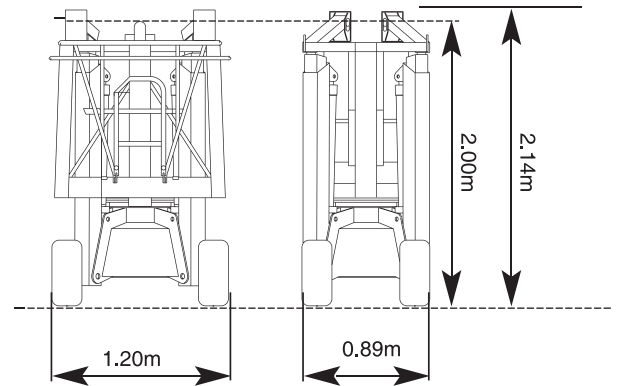
SPECIFICATIONS

Specification		Metric	Imperial
Working Height		22.00m	72ft 2in
Platform Height		19.90m	65ft 3in
Working Outreach		8.30m -12.00m	27ft 3in-39ft 4in
Slew		360°	-
Width	Travelling	0.89m - 1.30m	2ft 11in - 4ft 3in
	Max. Working	4.60 m	15ft 1in
	Min. Working	3.50m	2ft 11in - 4ft 3in
Length	Travelling	6.52m	21ft 5in
	Outrigger	4.10m	13ft 6in
Height		2.14m	7ft
Minimum Weight		2,350kg	5,182lb
Platform Capacity		200kg	440lb
Platform Size		1.20m	47in
Outrigger Plate		Ø0.14m	5.5in
Drive Speed		3.6kph	2.2mph
Maximum Setup Incline		8.75% (5°)	-
Gradeability		21% (12°)	-
No. Outrigger Positions		2	



FLOOR LOADINGS

Surface	Metric	Imperial
Max. Load per Outrigger	1,734kgf	3,822lbf
Front Wheel Surface Pressure	1.46kg/cm ²	2,990lb/ft ²
Rear Wheel Surface Pressure	2.92kg/cm ²	5,981lb/ft ²
Max. Surface Pressure on each Outrigger	11.21kg/cm ²	22,960lb/ft ²



PLUG-IN VOLTAGE



240V, 16Amp
Charges batteries (no engine).

CRANING

The machine can be lifted with a fork truck or slings/chains. There are lifting brackets at the chassis (see illustration). There has to be 4 straps with a length of at least 1 metre.

