



The functional design of the covering boxes for batteries, hydraulic and electric control facilitates and rationalises service and maintenance.



## The DL-series from DENKA LIFT for the professional elevating equipment user

This DL-series is specially constructed for use by rental companies and larger industries that demand safe and user friendly operation as well as large outreach in height and range.

Unfailing quality and strength are the main characteristics of the robust lifting equipment of the DL18/21 series that can be operated with no previous experience.

Setting up and placing the lift correctly can be done quickly and safely – even in narrow, almost unattainable work spaces and with difficult, uneven ground conditions – thanks to the hydraulic support legs with self-adjusting base plates.

An automatic limitation of the load momentum ensures optimum outreach to suit the load in the basket.

### All DENKA LIFTS meet the most stringent safety standards.

The electrical and hydraulic units have double safety devices and the cylinders have hose break valves. All lift movements are controlled by pressure-relief valves.

The telescopic boom is made of specially extruded aluminium sections that guarantee high stability coupled with low lifting equipment weight.

The combination of these positive boom aspects with the "2-speed system" provides the operator in the basket with a safe and highly functional workplace.

DL18/21 is a flexible lift series that is delivered as standard with battery, thus making a connection to the main supply unnecessary. The lift can also be equipped with a diesel engine with or without generator as extra accessory.

The DL18/21 will typically be used for outdoor repair, cleaning or painting works on facades, rooves, windows, trees, etc. as well as for several indoor job tasks.

All Denka lifts are being produced by Denka Lift Denmark A/S



The standard mounted hydraulic self-drive function facilitates manoeuvring procedures.



The rotating basket is delivered as standard with 2 x 45 degrees, thus ensuring an optimum working position on all sides.

# DENKA TRAILER LIFT Model DL18/DL21

## TECHNICAL DATA

Standard model	DL18	DL21
<b>Capacity:</b>		
Max. working height A	18,0 m	21,0 m
Max. working height B	15,5 m	20,0 m
Max. working height C	13,0 m	18,5 m
Max. reach D	11,4 m	10,0 m
Reach E	9,0 m	8,0 m
Max. load in basket	200 kg	200 kg
Slew movement cont	360°	360°
<b>Transport dimension:</b>		
Length L	7350 mm	8050 mm
Height H	2140/2000 mm	2460/2010 mm
Width B	2065/1860 mm	2065/1860 mm
Distance F	950 mm	750 mm
Net weight standard	2100 kg	2500 kg

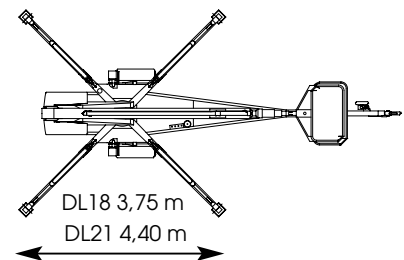
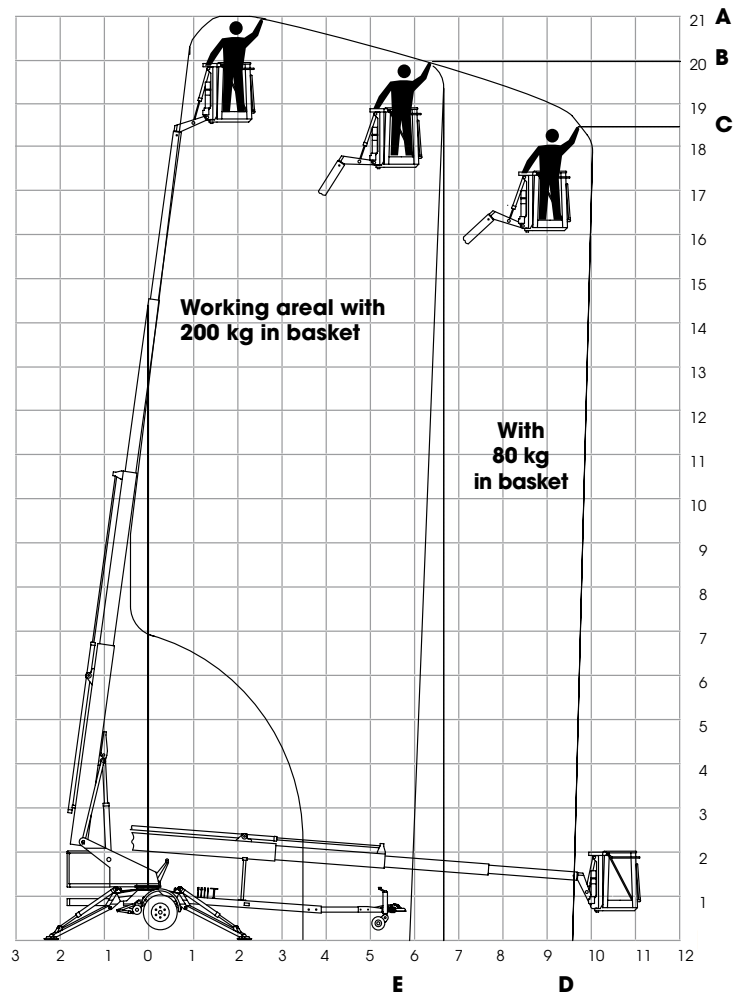
### STANDARD EQUIPMENT:

- Rotating alu basket 1200 mm
- Battery operation
- Proportional control
- Hydraulic outriggers
- Hydraulic wheel drive
- ELCB 30 mA
- Hour counter
- Hydraulic wheel drive from basket
- Adjustable ground level from basket

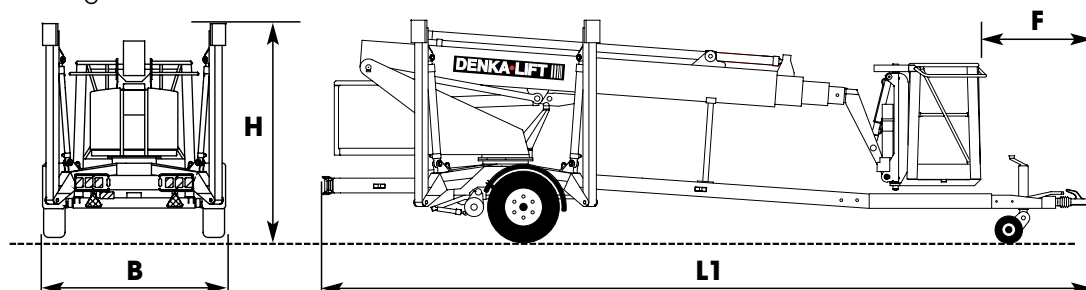
### EXTRA ACCESSORIES:

- Rotating fibreglass basket 1200 mm\*
- Current supply 50 (80) A/24 V\*
- Outlets for Water/air in the basket\*
- Petrol generator\*
- Yellow rotating light
- Height limiting system 2 steps
- D.engine charging generator 230V / 2,2 Kw\*
- Special colours
- Yellow flashing light on outriggers and under basket
- High capacity battery\*
- Biological degradable hydraulic oil
- Adjustable Basket from ground level
- Flashing after customers needs
- Self leveling chassis

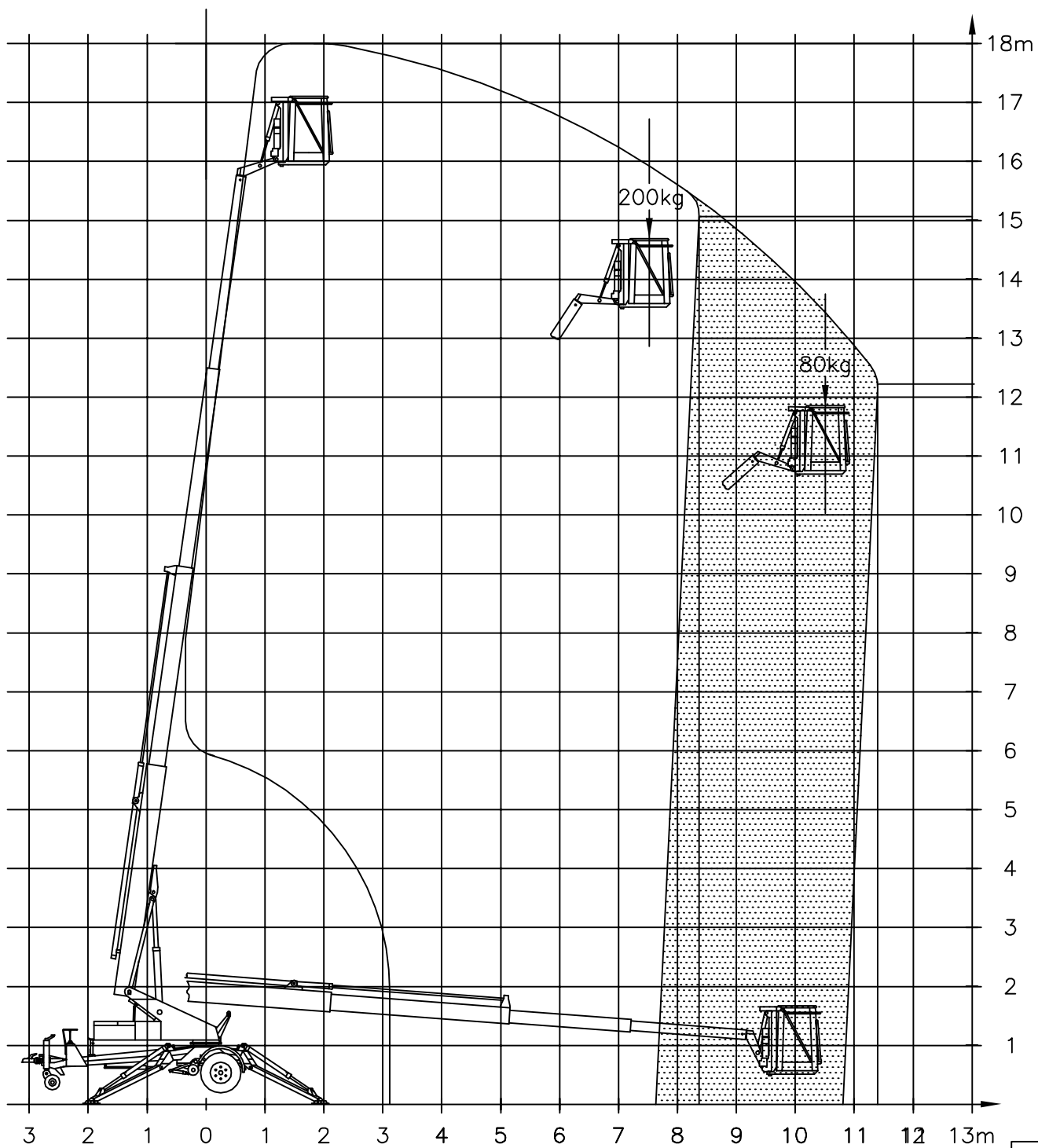
\*increase in weight



Outrigger cross section



DK18



DENKA-LIFT