



DL82N/DL92N DENKA

The Denka BASIC Series

When limited access or weight restrictions prevent the use of standard boom lifts, the DENKA lift series represents a cost efficient, simple and effective solution. With standard features that allow the lift to pass through single door openings, travel and set up on virtually any surface and reach work heights between 72ft to 92ft, the DENKA has become the work horse for facilities around the world with moderate reach requirements and limited access.

As with any ReachMaster product, safety is our number one concern and priority. The DENKA lift series is equipped with an automatic safety system that adjusts reach capacity according to basket load. Double safety devices in combination with break and pressure control systems provide maximum protection for the operator. Proportional controls allow for smooth and pleasant aerial operation.

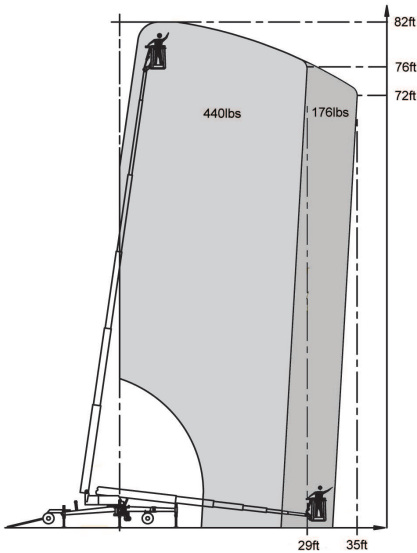
- Available in 3 models from 72ft - 92ft
- Pass through a single or double door opening
- Automatic, double safety and stability system
- Multi position outrigger system (DL72N only)
- Battery operation
- Set up on uneven surfaces
- Lightweight, detachable basket

Model	DL82N	DL92N
Working height	82ft	92ft
Basket height	76ft	86ft
Max outreach	35ft	39ft
Basket load	440lbs	440/264lbs
Basket dims	3'11" x 2'4"	3'11" x 2'4"
Basket rotation	+/-45°	Fixed
Turret rotation (cont)	360°	360°
Height	6ft6in	6ft6in
Length	27ft2in	27ft11in
Width	2ft11in	2ft11in
Gradability	10°/18%	10°/18%
Footprint	12ft10in	12ft10in
Weight (approx)	5,742lbs	5,797lbs
Pressure, front tires	48psi	48psi
Pressure, rear tires	73psi	73psi
Press., round footplate	101psi	101psi
Press., square footplate	18psi	15psi
4 battery pack	Standard	Standard
High Capacity battery	Option	Option

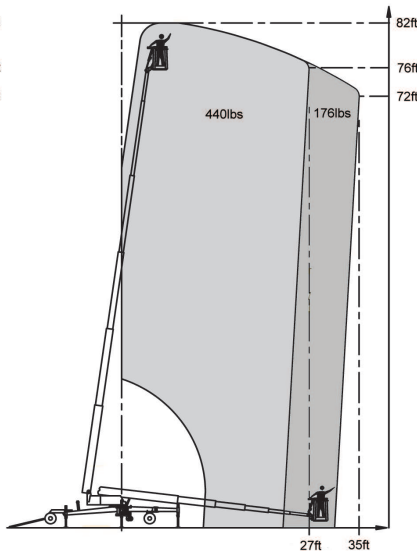
We reserve the right to alterations



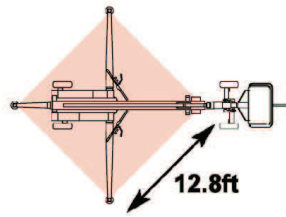
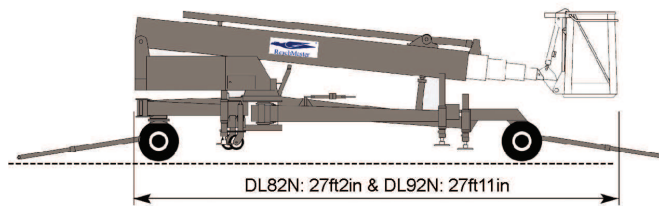
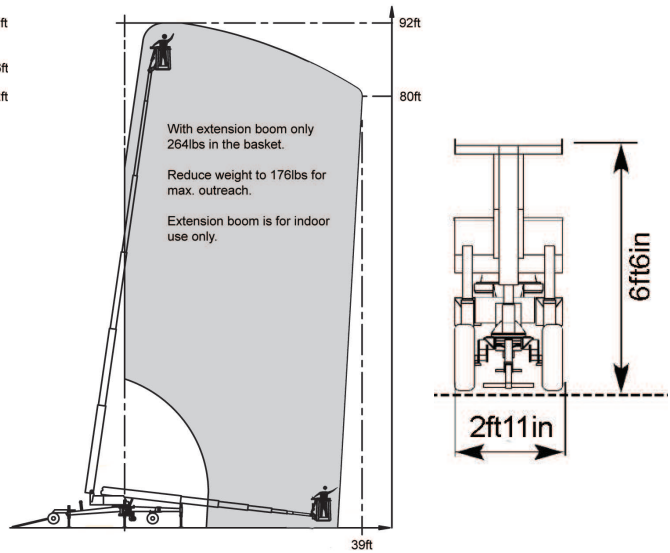
DL82N



DL92N



DL92N w Extension arm



DL82N/DL92N DENKA

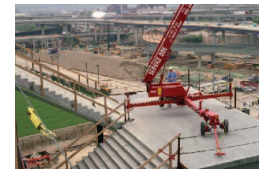
Standard Equipment

- Rotating aluminum basket (DL82N)
- Battery operation
- Preportional control
- Hydraulic outriggers
- Hydraulic wheel drive
- ELCB 30mA
- Hour counter
- Charging key
- Yellow rotating light

Optional Equipment

- Variable outrigger position
- Special colors
- Yellow flashing light on outriggers
- Biological degradable hydraulic oil
- Current supply*
- Outlets for air and water in the basket*
- Height limiting system, 2 steps
- Adjustable basket from ground level
- High capacity battery*

* Increase in weight



ReachMaster

ReachMaster, Inc
 1416D Stonehollow Dr.
 Kingwood, TX 77339
 TF: 1-866-358-7088
 Tel: 281-358-7088
 Fax: 281-359-3500
 www.reachmaster.com

We reserve the right to alterations