

www.dieci.com



DIECI



Dieci S.r.l.
Via E. Majorana, 2-4
42027 - Montecchio Emilia (RE) ITALY
Tel. +39 0522 869611
Fax +39 0522 869798
E-mail: info@dieci.com

APOLLO



25.6

PERFORMANCE	
Maximum capacity (kg)	2.500
Maximum lifting height (m)	5,78
Maximum horizontal outreach (m)	3,25
Outreach at maximum height (m)	0,67
Fork swivelling angle	129°
Pull-out force (daN)	5.700
Towing force (daN)	4.400
Gradeability	40 %
Total weight empty (kg)	4.900
Max speed (km/h)	30 *
* = referred to wheels with maximum admitted diameter	

BOOM	
Times: (in seconds)	
Lifting	7,8
Descent	4,1
Extension	6,1
Retraction	3,4
Forward swivelling	3,5
Reverse swivelling	2,2
Patented compensation system	

HYDRAULIC PLANT	
Gear pump for power steering and movements	
Max flow rate (l/1'):	80
Multigrade mineral oil.	
Maximum operating pressure (bar):	230
Hydraulic control distributor-single joystick with proportional controls.	
Hydraulic socket with quick couplings on boom head.	

DIFFERENTIAL AXLES	
Steering axles: 2, with 4 planetary reduction gears.	
Type of steering: 4 wheels / transversal / 2 wheels.	
Service braking: oil bath on front axle.	
Parking brake: with negative action and electrical control.	

REFUELLING (Litres)	
Hydraulic plant (total)	70
Fuel tank	80

ENGINE	
Manufacturer:	KUBOTA
Type:	V3307-DI-T-E3B
Maximum power kW (HP):	55,4 (74,3) @ 2600 RPM
Maximum torque (Nm):	265 @ 1500 RPM
Intake:	Turbo compressor
Emission level:	Tier IVi / Stage III A
Fueling:	Diesel - Mechanical Injection - 4 Stroke Diesel
No. of cylinders and arrangement:	4 vertical in line
Displacement (cm³):	3.331
Cooling:	Liquid.
Air pre-filtering with dust separator, air pre-heating.	

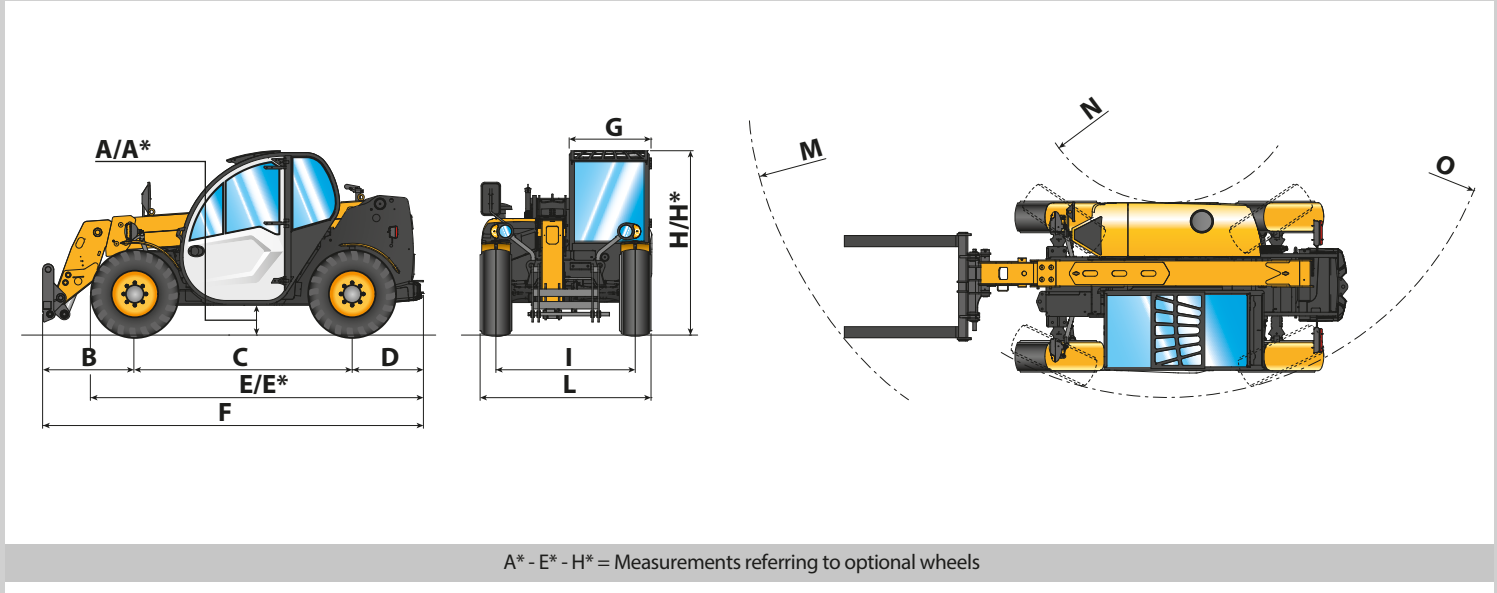
DEVICES AS PER STANDARD	
Anti-tipping device with pejorative movement block.	
Hydraulic socket for any accessories on the boom head.	
Soundproof closed cab, ROPS-FOPS approved, with heater.	
Self-blocking front axle differential (limited slip 45%).	
Tachometer, water temperature gage, fuel level gage, engine oil and water temperature indicator, speedometer, hour meter, clock, LCD display.	

OPTIONALS AND ACCESSORIES	
A/C; Digital tachometer; Water Heaters; Seat pneumatic suspension; Work lights on the cab and on the boom; Quick coupling for accessories; Radio; Anti-theft system; Glass protection, Boom suspension.	
(For further customizations, contact your local dealer)	

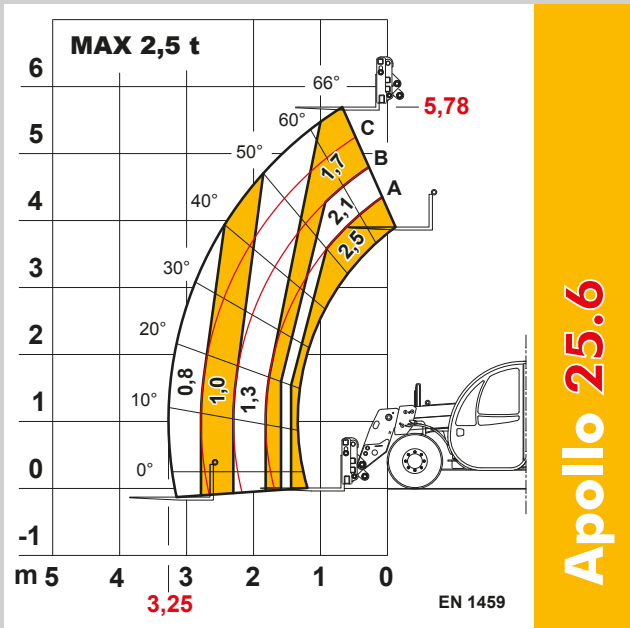
TRANSMISSION	
Single speed Hydrostatic transmission with variable displacement pump.	
Hydraulic motor with continuous automatic adjustment	
Reversing: Electro-hydraulic.	
Pedal inching control for controlled forward movement	

TYRES	
Tyres	12 - 16.5"
Alternative	12.0/75 - 18"

DIMENSIONS	
A/A*	270/320*
B	985
C	2350
D	765
E/E*	3535/3585*
F	4125
G	860
H/H*	1950/2000*
I	1500
L	1850
M	4540
N	1460
O	3555
Measurements expressed in millimetres	
A* - E* - H* = Measurements referring to optional wheels	



A* - E* - H* = Measurements referring to optional wheels



Apollo 25.6