



**555C**  
WHEEL LOADER

**EXTRA**



■ **Net Horsepower**  
319 hp (238 kW)

■ **Bucket Capacity**  
5.5 yd<sup>3</sup> to 11.0 yd<sup>3</sup>  
(4.2 m<sup>3</sup> to 8.4 m<sup>3</sup>)

■ **Operating Weight**  
63,753 lb (28918 kg)

World class loader meeting  
high production requirements

Front frame mounted ROPS Cab provides  
excellent visibility and operator comfort

Torque proportioning differentials provide  
the traction to go through wet,  
muddy or severe ground conditions  
and reduce costly tire spinning

Optional high lift arrangement

Z-bar linkage for excellent breakout  
and digging ability

The automatic boom kick-out and bucket  
leveler provides fast cycles and high  
productivity

Internal, forced oil cooled, maintenance free  
wet disc brakes provide a long, fade resistant life

40° articulation provides a tight turning  
radius for confined areas

# 555C Extra

## designed for durability

Well located standard traveling and working halogen lights and auxiliary front mounted lights

319 hp (238 kW) Cummins QSM11 engine meets EPA Tier 3 emission standards

Hydraulically driven, variable speed fan for high cooling efficiency and greatly reduced blasting of debris against the radiator core

Hydrostatic steering system and tilt/telescopic steering column

Simple, electrically controlled, countershaft, soft shift transmission with 4 speeds forward and reverse

Joystick actuated hydraulic controls for easy, comfortable and precise control of the bucket

Trunnion mounted rear axle oscillates a total of 30°

Sight gauges and ground level servicing provide for quick daily maintenance and check

Widely spaced center hinge pins with double-tapered roller bearings for long life

Heavy duty front and rear frames, designed for tough applications

**y, high productivity and profitability**



New 555C Extra loader, designed for heavy loads and stresses, gives high production and a long trouble free life.

**HEAVY DUTY FRAMES**

**BOOM ARMS**

**PROVEN LOAD LINKAGE**



The front frame with high mount boom cylinder pivots increased lifting ability to the top without sacrificing digging ability. The rear frame features trunion rear axle mountings.



Integral solid boom arms combine a large cross tube and castings to provide a strong structure, which gives excellent stress distribution for the bucket, yet provide extra stiffness during bucket corner loading.



Z-Bar linkage transfers maximum force to the bucket to pry out hard material. All loader linkage pins are sealed out abrasive dust and grit.



ER

## BRAKES



m breakout  
ard packed  
ed to keep



Internal wet disc brakes are forced cooled and enable the loader to be operated in any type of work cycle without overheating. Being sealed from outside contaminants protects the brakes and also extends brake life, especially in very abrasive or caustic environments, encountered in cement or chemical plants.



Dressta buckets are noted for their superior digging ability and load retention abilities that promote a full load every time.

The low mounted bucket hinge points, long bucket floor and sloped side sheets combined with a balanced drivetrain design, let the bucket fully penetrate the bank for full loads with minimum tire spin.



Special applications often require different buckets and tools.

Dressta offers high lift arrangements, log grapples, fork-lift attachments and tool carrier arrangements to meet your needs.

# Specification

## ENGINE

* Make and model .....	Cummins QSM11
Type .....	In-line, 6-cylinder
Aspiration .....	turbocharged and CAC
Fuel system .....	HPI electronic
Gross Horsepower, SAE J1995 .....	335 hp (250 kW)
** Net Flywheel power, SAE J1349/ISO 9249 .....	319 hp (238 kW)
Rated rpm .....	2100 rpm
Maximum torque @ 1400 rpm .....	1,235 lb-ft (1674 Nm)
Displacement .....	660 in <sup>3</sup> (10.8 l)
Bore and stroke .....	4.92" x 5.79" (125 x 147 mm)
Lubrication, full flow filtering .....	full pressure
Air cleaner .....	dry type, dual stage with dust discharge valve

\* Meets EPA Tier 3 emission regulations

\*\* Net Horsepower at the minimum speed of hydraulic fan 330 hp (247 kW)

## TORQUE CONVERTER

Single stage, single phase type, 2.9 to 1 stall ratio.  
Properly matched to engine and transmission for excellent digging ability.

## TRANSMISSION

Electrically controlled, full power shift, countershaft transmission is driven by a double universal joint from the torque converter.  
Single lever control for easy and precise control of gear and direction changes.

## TRAVEL SPEEDS

Gear	Forward and Reverse	
	mph	(km/h)
1 st	4.2	(6.8)
2 nd	7.5	(12.0)
3 rd	12.9	(20.8)
4 th	21.7	(35.0)

## DIFFERENTIALS

Torque proportioning, front and rear.

## AXLES

Heavy-duty type with full-floating axle shafts and planetary final drives. Four wheel drive. Front axle fixed. Trunnion mounted rear axle oscillates a total of 30°. Vertical wheel travel of 22" (559 mm).

## STEERING

Articulated frame. Hydrostatic type providing smooth steering at any engine speed. Tilting and telescoping steering column for operator efficiency.  
Articulation, right or left ..... 40°  
Turning radius outside of tires ..... 21'4" (6.5 m)

## BRAKES

Service - Four wheel, hydraulic applied, sealed, force cooled, internal, multiple wet disc brakes with separate axle-by-axle actuation.  
Parking - Hydraulic release, spring apply, disc type on front axle with indicator light and buzzer.

## TIRES

Standard: 26.5 x 25, 28PR (L-4)

## HYDRAULIC SYSTEM

Type: Closed with pressure control 30 psi (210 kPa) and vacuum relief.  
Reservoir: Cylindrical type with 10  $\mu$  filtration for excellent full flow filtering, suction screen.

Pumps: 2-vane type driven from accessory drive.

Single pump, steering and loader equipment, output 96.4 gpm (365 l/min) at 2100 rpm and 1,000 psi (6.89 MPa).

Double pump: loader equipment secondary pump, output 31.7 gpm (120 l/min) and pilot pump, output 8.7 gpm (33 l/min) at 2100 rpm and 1,000 psi (6.89 MPa).

Main Valves: Two spool, single lever with relief valve.

Relief valve pressure 3,000 psi (20.7 MPa).

Cylinders (double acting), hardened chrome plated piston rods.

Boom-Bore and Stroke (2) ..... 8.0" x 34.7" (203 x 881 mm)

Bucket-Bore and Stroke (1) ..... 8.5" x 26.7" (216 x 678 mm)

Steering-Bore and Stroke (2) ..... 4.5" x 20" (114 x 508 mm)

Raise Boom 6.5 sec. Lower Boom (float) 4.5 sec. Bucket Dump 1.5 sec.

Total: 12.5 sec. hydraulic cycle time.

## REFILL CAPACITIES

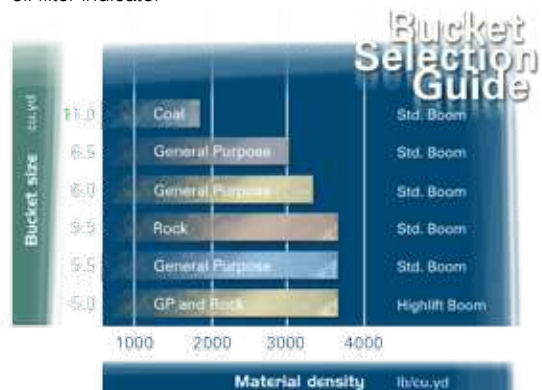
	US gal	(Liter)
Fuel tank	135	(511)
Cooling system	12	(46)
Crankcase w/filter	9	(34)
Transmission system	30.4	(115)
Differential & final drive, each	19.9	(75.3)
Hydraulic reservoir	44	(167)
Hydraulic system	72.6	(275)

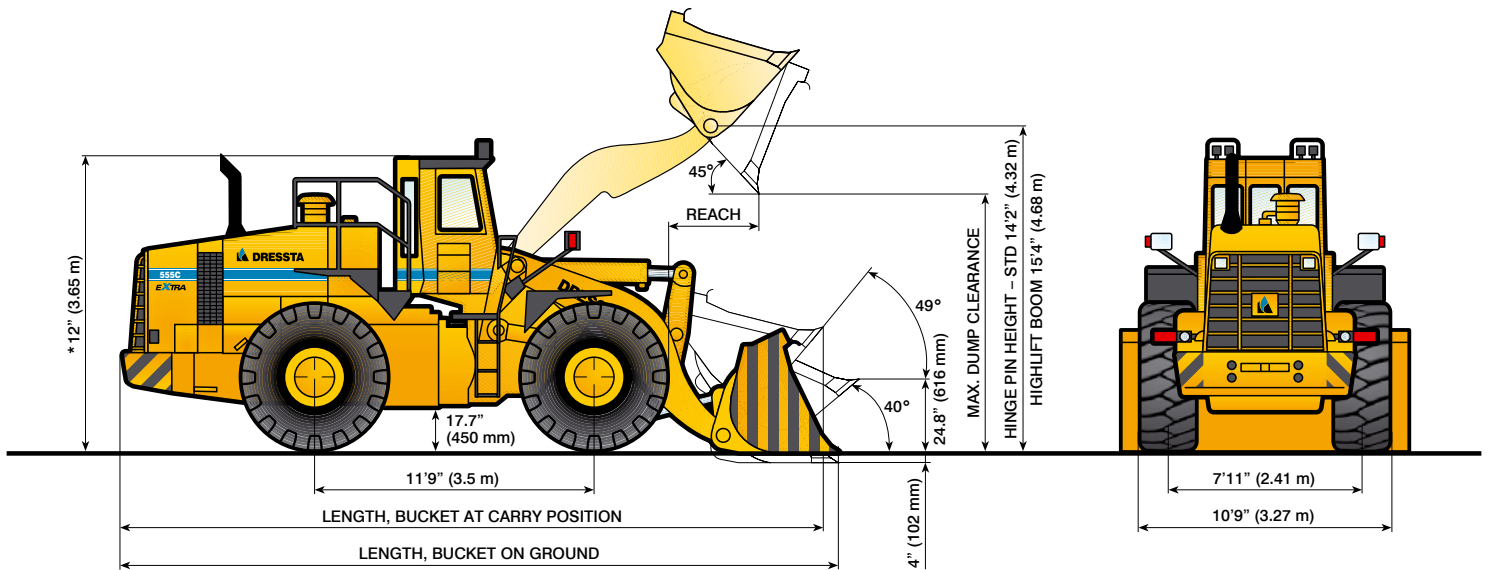
## INSTRUMENTATION

Gauges: engine oil pressure, engine coolant temperature, torque converter oil temperature, fuel level, air cleaner service indicator, hourmeter, voltmeter

Sight gauges: hydraulic oil, coolant, transmission oil, fuel tank, brake oil

Warning lights: engine coolant overheat, low engine oil pressure, torque converter oil temperature, air cleaner restriction, parking brake applied, hydraulic brake warning, transmission and hydraulic oil filter indicator





\* Add 9.5" (240 mm) to overall height if roof mounted lights are used.  
 Dimensions vary with bucket size-refer to chart below.

## STANDARD BOOM

BUCKET SELECTION		General Purpose						Rock		Coal
		Cutting Edge	With Teeth	Cutting Edge	With Teeth	Cutting Edge	With Teeth	Spade Nose with teeth	Spade Nose	Straight Edge
Capacity, SAE	Rated, yd <sup>3</sup> (m <sup>3</sup> )	5.5 (4.2)	5.5 (4.2)	6.0 (4.6)	6.0 (4.6)	6.5 (5.0)	6.5 (5.0)	5.5 (4.2)	5.5 (4.2)	11.0 (8.4)
	Struck, yd <sup>3</sup> (m <sup>3</sup> )	4.4 (3.4)	4.4 (3.4)	5.1 (3.9)	5.1 (3.9)	5.6 (4.3)	5.6 (4.3)	4.6 (3.5)	4.6 (3.5)	9.6 (7.3)
Bucket Width		137" (3.49 m)	137" (3.49 m)	137" (3.49 m)	137" (3.49 m)	137" (3.49 m)	137" (3.49 m)	138" (3.50 m)	138" (3.50 m)	160" (4.06 m)
Dump Clearance @ Max. Height and 45° Dump Angle		10'10" (3.30 m)	10'4" (3.15 m)	10'8" (3.25 m)	10'2" (3.09 m)	10'8" (3.25 m)	10'8" (3.25 m)	9'11" (3.01 m)	10'4" (3.15 m)	9'7" (2.92 m)
Reach @ Max. Height and 45° Dump Angle		4'8" (1.42 m)	5'2" (1.58 m)	4'10" (1.48 m)	5'4" (1.63 m)	4'10" (1.48 m)	4'10" (1.48 m)	5'10" (1.77 m)	5'4" (1.63 m)	6' (1.84 m)
Reach @ 7' (2.13 m) Clearance and 45° Dump Angle		6'8" (2.02 m)	7' (2.13 m)	6'10" (2.07 m)	7'1" (2.17 m)	6'10" (2.07 m)	7'1" (2.17 m)	7'5" (2.27 m)	7'2" (2.18 m)	7'7" (2.31 m)
Overall Length, Bucket @ Carry Position		29'6" (9.00 m)	30' (9.15 m)	29'8" (9.05 m)	30'5" (9.27 m)	29'8" (9.05 m)	30'5" (9.27 m)	30'6" (9.31 m)	30'1" (9.18 m)	30'9" (9.37 m)
Overall Length, Bucket on Ground		29'7" (9.01 m)	30'3" (9.23 m)	29'10" (9.09 m)	30'6" (9.31 m)	29'10" (9.09 m)	30'6" (9.31 m)	31'1" (9.47 m)	30'5" (9.27 m)	31'5" (9.57 m)
Turning Radius, Outside Corner of Bucket @ SAE Carry		23'10" (7.26 m)	24'6" (7.48 m)	23'11" (7.29 m)	24'8" (7.51 m)	23'11" (7.29 m)	24'8" (7.51 m)	24'5" (7.44 m)	23'9" (7.24 m)	25'5" (7.75 m)
Static Tipping Load,	Straight	46,508 lb (21096 kg)	50,062 lb (22708 kg)	46,270 lb (20988 kg)	49,716 lb (22551 kg)	45,807 lb (20778 kg)	49,253 lb (22341 kg)	47,835 lb (21698 kg)	44,950 lb (20389 kg)	40,670 lb (18448 kg)
	Full Turn	39,500 lb (17917 kg)	42,264 lb (19171 kg)	39,330 lb (17840 kg)	42,084 lb (19089 kg)	38,938 lb (17662 kg)	41,691 lb (18911 kg)	40,693 lb (18458 kg)	38,208 lb (17331 kg)	34,597 lb (15693 kg)
Breakout Force		60,010 lb (267 kN)	64,203 lb (285.6 kN)	56,560 lb (251.6 kN)	60,516 lb (269.2 kN)	53,322 lb (237.2 kN)	57,268 lb (254.8 kN)	55,155 lb (247.4 kN)	52,221 lb (232.3 kN)	44,196 lb (196.6 kN)
Operating Weight		63,290 lb (28708 kg)	63,753 lb (28918 kg)	63,475 lb (28792 kg)	63,938 lb (29002 kg)	63,700 lb (28894 kg)	64,163 lb (29104 kg)	64,657 lb (29328 kg)	64,260 lb (29148 kg)	66,380 lb (30110 kg)

Specifications shown include all standard equipment. All values are with standard tires.  
 All dimensions, weights and performance values per SAE J732, where applicable. Machine stability, weight and performance are affected by optional attachments.

## HIGHLIFT ARRANGEMENT

BUCKET SELECTION		General Purpose				Rock	
		Cutting Edge		With Teeth		Spade Nose with teeth	
Capacity, SAE	Rated	5.0 yd <sup>3</sup> (3.8 m <sup>3</sup> )		5.0 yd <sup>3</sup> (3.8 m <sup>3</sup> )		5.0 yd <sup>3</sup> (3.8 m <sup>3</sup> )	
	Struck	4.07 yd <sup>3</sup> (3.1 m <sup>3</sup> )		4.07 yd <sup>3</sup> (3.1 m <sup>3</sup> )		4.07 yd <sup>3</sup> (3.1 m <sup>3</sup> )	
Bucket Width		137" (3.49 m)		137" (3.49 m)		137" (3.49 m)	
Dump Clearance @ Max. Height and 45° Dump Angle		12'2" (3.71 m)		11'9" (3.57 m)		11'6" (3.51 m)	
Reach @ Max. Height and 45° Dump Angle		4'8" (1.42 m)		5'2" (1.56 m)		5'2" (1.58 m)	
Reach @ 7' (2.13 m) Clearance and 45° Dump Angle		7'5" (2.27 m)		7'9" (2.37 m)		7'9" (2.37 m)	
Overall Length, Bucket @ Carry Position		30'5" (9.27 m)		30'10" (9.40 m)		31' (9.45 m)	
Overall Length, Bucket on Ground		30'5" (9.28 m)		31'1" (9.48 m)		31'4" (9.55 m)	
Turning Radius, Outside Corner of Bucket @ SAE Carry		24'2" (7.37 m)		24'10" (7.57 m)		24'2" (7.38 m)	
Static Tipping Load,	Straight	41,239 lb (18706 kg)		44,178 lb (20039 kg)		40,701 lb (18462 kg)	
	Full Turn	35,053 lb (15900 kg)		37,507 lb (17013 kg)		34,595 lb (15692 kg)	
Breakout Force		63,079 lb (280.6 kN)		67,485 lb (300.2 kN)		51,861 lb (230.7 kN)	
Operating Weight		65,102 lb (29530 kg)		65,565 lb (29740 kg)		66,350 lb (30096 kg)	

# 555C WHEEL LOADER



## STANDARD EQUIPMENT

- Air cleaner, dry type, dual stage with dust discharge valve
- Alarm, back-up
- Alternator, 80 A
- Antifreeze, -34°F (-37°C)
- Axles, heavy duty, full floating, planetary type final drives, 4-wheel drive
- Batteries, (2) 12 V, 700 CCA, maintenance free
- Boom kickout, automatic
- Boom, standard
- Brake, parking, disc type, spring apply, hydraulic release with indicator light
- Brakes, service, 4-wheel wet multi disc, full hydraulic apply, with axle-by-axle actuation
- Bucket leveler, automatic, adjustable
- Cab, ROPS (SAE J1040) with sound suppression, heater/pressurizer/defroster, dome light, front and rear electric windshield wipers w/washers, rear view mirror and tinted safety glass
- Cooling module includes radiator, transmission oil cooler, hydraulic oil cooler, fuel cooler, charge air cooler; isolation mounted
- Counterweight 5,264 lb (2390 kg)
- Differentials, torque proportioning
- Drawbar, recessed
- Fan, hydraulically driven, suction type, variable speed
- Filters, engine oil, transmission, torque converter and hydraulic oil, cartridge type element
- Grill, rear, vertically hinged
- Ground level fueling and side drain ports for engine oil and engine coolant
- Horn, electric
- Hydraulic controls, single lever with transmission kick-down switch and reversing switch
- Hydraulic system – flow controlled with vane pumps and top mounted pressurized hydraulic tank
- Instruments:
  - Gauges: air cleaner service indicator, engine coolant temperature, engine oil pressure, fuel level, torque converter oil temperature, voltmeter, hourmeter, tachometer, low water indicator light
  - Sight gauges: hydraulic oil level, radiator coolant level, transmission oil level, fuel tank level, brake oil level
  - Warning lights: parking brake applied, hydraulic brake warning, engine coolant overheat, low engine oil pressure, transmission and hydraulic filter change indicator, torque converter oil temperature, air cleaner restriction
- Ladders, L.H.- cab access, R.H. – service
- Lifting eyes and tie downs
- Lights, halogen, working and traveling, 4 front, 2 rear, 2 stop and tail, turn signals
- Master electrical disconnect
- Mirrors, R.H. and L.H., rear view, wide angle type
- Muffler, underhood, insulated
- Panels, engine compartment side, quick access, swing out type for servicing
- Seat, adjustable, suspension type with arm rests, fabric cover
- Seat belt (SAE J386)
- Starting, 24 V, electric
- Steering, hydrostatic, articulated frame
- Steering wheel, tilt and telescoping
- Tires, 26.5 x 25, 28PR (L-4)
- Torque converter, single stage, single phase
- Tow-eye
- Transmission, 4-speeds forward and reverse with full soft shift, electrically controlled
- Valve, 2-spool
- Vandalism protection

## OPTIONAL ATTACHMENTS

- Air conditioner/heater/pressurizer/defroster
- AM/FM CD radio
- Auxiliary steering, ground driven
- Batteries, cold start, (4) 12 V, 1400 CCA
- Bucket, accessories:
  - cutting edge, bolt-on
  - tooth adapters, bolt-on
  - tooth point kit, set of 8 (general purpose, abrasion, quarry jobs, rock)
  - tooth removal kit
- Buckets, general purpose (standard boom):
  - 5.5 cu.yd (4.2 cu.m) with cutting edge or with teeth
  - 6 cu.yd (4.6 cu.m) with cutting edge or with teeth
  - 6.5 cu.yd (5.0 cu.m) with cutting edge or with teeth
- Buckets, general purpose (high lift boom):
  - 5 cu.yd (3.8 cu.m) with cutting edge or teeth
- Buckets, rock (standard boom):
  - 5.5 cu.yd (4.2 cu.m), spade nose or spade nose with teeth
- Bucket, rock (high lift boom):
  - 5 cu.yd (3.8 cu.m), spade nose with teeth
- Bucket, coal (standard boom):
  - 11 cu.yd (8.4 cu.m), straight edge
- Fan in cab
- Fenders, front and rear
- Fork-lift attachment (standard boom), 17,328 lb (7860 kg) lifting capacity
- Guard, transmission
- High lift boom, 184" (4.68 m) hinge pin height
- Hydraulic kit, 3-spool valve, piping and controls including auxiliary lever
- Lighting, auxiliary, front mounted (4 cab roof mounted, 2 low level)
- Logger kit, includes related hydraulics and bucket leveler
- Starting/charging receptacle
- Starting aid, ether
- Tool carrier, quick coupler, includes male master, third spool for hydraulic valve, piping and controls w/auxiliary lever
  - spade nose rock bucket, 5.5 cu.yd (4.2 cu.m), with tooth adapters and female adapter
  - fork-lift attachment, with female adapter, 16,535 lb (7500 kg) lifting capacity
- Tools in metal box
- Wheel protectors (special shipment less tires)

Specifications subject to change without notice. Illustrations and pictures may include optional attachments and accessories and may not include all standard equipment.

## DRESSTA NORTH AMERICA, LTD.

3 TIMBER COURT  
BOLINGBROOK, IL 60440  
phone (630) 759 9530 fax (630) 759 9534  
Toll free (877) DNA 2001  
www.dresstanorthamerica.com