



# SB-30M

PIPELAYER




**EXTRA**

■ **Net Horsepower**  
140 kW (188 hp)

■ **Max Lifting Capacity**  
33 100 kg (72,972 lb)

■ **Operating Weight**  
27 580 kg (60,803 lb)





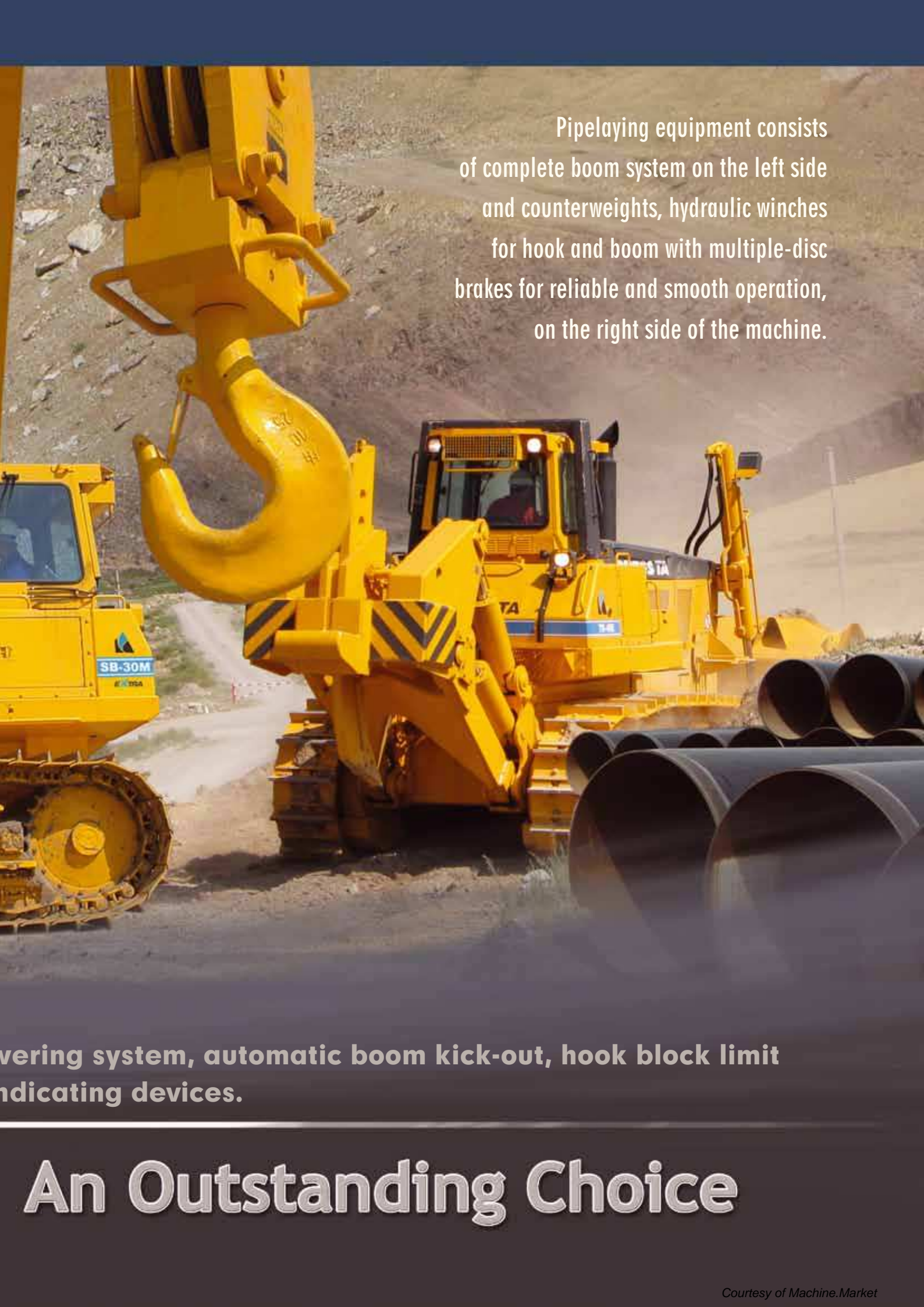
The DRESSTA SB-30M Extra has been specifically designed to handle and lay pipes. The pipelayer provides excellent choice for majority of gas and petroleum as well as utility projects.

Work safety is ensured by the use of emergency hook load switch and load in

---

# SB-30M Extra –





Pipelaying equipment consists of complete boom system on the left side and counterweights, hydraulic winches for hook and boom with multiple-disc brakes for reliable and smooth operation, on the right side of the machine.

...vering system, automatic boom kick-out, hook block limit  
...ndicating devices.

# An Outstanding Choice



# Excellent stability and easy operation



Two independently controlled hydraulic winches drive the boom and hook systems.



Optional electronic safe load indicator (ESLI) shows necessary load handling information.



Cab roof window provides full view of all operations while the emergency stop button provides operator's safety.



# B-30M

The Cummins QSB6.7 engine meets EU Stage IIIA and EPA Tier 3 emissions standards. This engine combines the highly efficient electronically controlled fuel injection system with high reliability, durability and long maintenance intervals.



Full vision of emergency hatch safety.



The two front levers control winches of the pipelaying equipment while the side levers actuate the counterweights that maintain the proper stability of the machine.

Six-sided deluxe interior demountable cab provides excellent visibility, operator's comfort and operation ease with low effort controls. The sound suppressed cab may be optionally equipped with two-post ROPS protecting an operator.

The instrument panels provide the operator with all necessary performance data. The left hand side joystick controls transmission system and steering drive of the machine. The right hand side four levers control the pipelaying equipment.

# Specification

## ENGINE

|  |  |
|--|--|
| * Make and Model .....                   | CUMMINS QSB6.7   |
| Type .....                               | In-line, 6-cylinder  |
| Aspiration .....                         | Turbocharged and CAC   |
| Fuel system .....                        | HPCR Electronic  |
| Gross Horsepower, SAE J1995 .....        | 151 kW (203 hp)  |
| Net Horsepower, SAE J1349/ISO 9249 ..... | 140 kW (188 hp)  |
| Rated rpm .....                          | 2000 rpm   |
| Maximum torque @ 1450 rpm.....           | 945 Nm (697 lb ft)   |
| Displacement .....                       | 6.7 l (408 in <sup>3</sup> )   |
| Bore and Stroke .....                    | 107 x 124 mm (4.21" x 4.88")   |
| Air Cleaner .....                        | dry type with exhaust aspirated<br>primary and safety elements and service indicator |

\* Meets EU Stage IIIA and EPA Tier 3 emission regulations

## FINAL DRIVES

Double-reduction module provides desired gear reduction at the sprocket. Ring-type sprocket distributes wear evenly over track bushings letting every tooth ride free one-half of the time to reduce wear. Final drives or sprockets are replaceable without removing track frames.

## TRACK FRAME

|  |                     |
|--|---------------------|
| Non-oscillating type, all-welded heavy box section track frame |                     |
| Track rollers, each side .....                                 | 8                   |
| Top idlers, each side .....                                    | 2                   |
| Front idlers (drum type) each side.....                        | 1                   |
| All rollers and idlers.....                                    | Lifespan lubricated |

## TRANSMISSION & TORQUE CONVERTER

Modular, countershaft type power shift, electro-hydraulic control. Single stage 370 mm (14.6") torque converter with a 2.6:1 stall ratio drives to transmission through a double universal joint.

## TRACKS

|  |   |
|--|---|
| The split master link reduces chain removal and installation time. |   |
| Track shoe width, standard.....                                    | 610 mm (24")                                |
| Track shoes, each side .....                                       | 43  |
| Ground contact area with std shoes .....                           | 3.7 m <sup>2</sup> (5,768 in <sup>2</sup> ) |
| Ground pressure.....   | 72.7 kPa (10.5 psi)                         |
| Height of grouser .....  | 64 mm (2.52")                               |
| Track adjustment.....  | full hydraulic                              |
| Ground clearance .....   | 445 mm (17.5")                              |

## TRAVEL SPEEDS

| Gear | Range | Forward |       | Reverse |       |
|------|-------|---------|-------|---------|-------|
|      |       | km/h    | (mph) | km/h    | (mph) |
| 1st  | Low   | 2.9     | (1.8) | 3.4     | (2.1) |
|      | High  | 3.9     | (2.4) | 4.6     | (2.9) |
| 2nd  | Low   | 5.2     | (3.2) | 6.1     | (3.8) |
|      | High  | 6.9     | (4.3) | 8.1     | (5.0) |
| 3rd  | Low   | 8.2     | (5.1) | 9.6     | (6.0) |
|      | High  | 10.8    | (6.7) | 12.6    | (7.8) |

## REFILL CAPACITIES

|                        | Liter | (US gal) |
|------------------------|-------|----------|
| Fuel tank              | 316   | (83.5)   |
| Cooling system         | 40    | (10.6)   |
| Crankcase w/filter     | 23    | (6.1)    |
| Transmission system    | 145   | (38.3)   |
| Final drive, each side | 38    | (10.0)   |
| Hydraulic reservoir    | 115   | (30.4)   |

## STEERING & BRAKING

Two speed geared steering module provides gradual turns while maintaining full power to both tracks plus conventional clutch-brake performance for tight or pivot turns. This type of steering system offers superior traction in all types of operations and terrain.

Coupled to 3-speed transmission provides 6 speeds forward and 6 reverse.

The left hand joystick controls transmission and steering drive for up and down shifting, steering, Hi/Lo selection and LH/RH gradual geared turn.

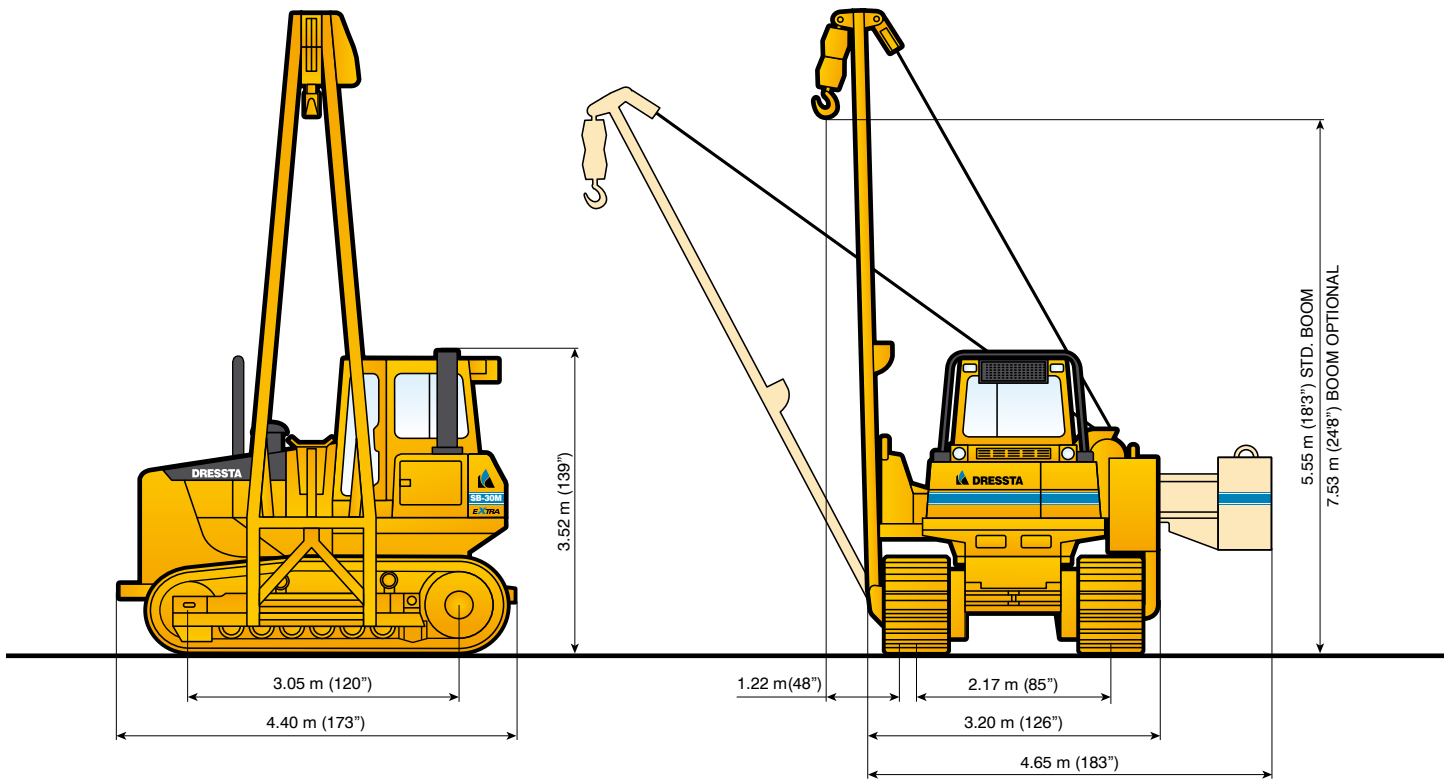
Foot pedal applies both brakes for parking and downhill control. Brakes are spring applied and hydraulically released.

## OPERATING WEIGHT

Includes standard equipment and full fuel .... 27580 kg (60,803 lb)

## OVERALL DIMENSIONS WITH EQUIPMENT

|  |               |
|--|---------------|
| Width, w/o counterweights and boom ..... | 3.20 m (126") |
| Width, counterweights extended .....     | 4.65 m (183") |
| Overall length.....                      | 4.40 m (173") |
| Height w/o boom .....                    | 3.52 m (139") |
| Track on ground.....                     | 3.05 m (120") |



## PIPELAYING EQUIPMENT

### COUNTERWEIGHTS

Adjustable, hydraulically controlled:

|   |                     |
|---|---------------------|
| Counterweight frames .....                | 980 kg (2,160 lb)   |
| 2 blocks at 2190 kg (4,828 lb) each ..... | 4380 kg (9,656 lb)  |
| Total weight extendable .....             | 5360 kg (11,817 lb) |

### BOOM

Welded box section. Length of standard boom – 6.5 m (21'4") and optional boom – 8.5 m (27'9").

### LIVE POWER

Continuous power to pipelayer winches, independent of torque converter.

### WINCH TRANSMISSION

Planetary gear box, 2 speeds for raising, 2 for lowering.

### DRUMS

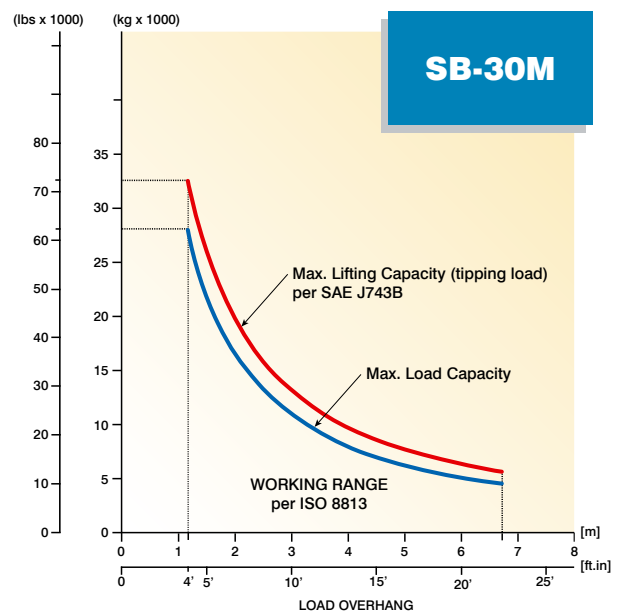
Operated independently or simultaneously.

|   | HOOK           | BOOM           |
|---|----------------|----------------|
| Drum diameter .....                           | 340 mm (13.4") | 340 mm (13.4") |
| Max capacity with<br>19 mm (3/4") cable ..... | 55 m (180'5")  | 45 m (147'7")  |

### HOOK SPEEDS (bare drum)

| Raise/Lower  | m/min       | (ft/min)      |
|--------------|-------------|---------------|
| – Low .....  | 11.7 / 11.7 | (38.4 / 38.4) |
| – High ..... | 21.3 / 27.1 | (69.9 / 88.9) |

### LIFTING CAPACITY for standard 6.5 m (21'4") boom



#### SPECIFIED EQUIPMENT

- 19 mm (3/4") WIRE ROPE, 26300 kg (57,981 lb) MINIMUM BREAKING STRENGTH
- 4 PART LOAD LINE
- 3 PART BOOM LINE
- COUNTERWEIGHTS EXTENDED – 5360 kg (11,817 lb)





## STANDARD EQUIPMENT

- Air cleaner, dry type w/exhaust aspirated primary and safety elements and service indicator
- Alarm back-up
- Alternator, 50 A
- Antifreeze, -37°C (-34°F)
- Batteries, (2) 12 V, 815 CCA, maintenance free
- Boom kickout, uppermost position
- Boom, welded type, box-section structure, "A" shape frame, length 6500 mm (21'4")
- Brakes, wet, multiple disc, closed type, spring applied, hydraulically released
- Brake, hook lowering, auxiliary
- Bumper, front
- Cab with sound suppression, air recirculation system, lights: 2F and 1 side (LH), 4 wipers w/washers, inside mirror, dome light, roof window and emergency hatch (approved according to FOPS-SAE J231)
- Cooling module; includes radiator, transmission oil cooler, hydraulic oil cooler, charge air cooler; isolation mounted
- Counterweights, adjustable, hydraulically controlled 2 blocks and 2 counterweight frames
- Decelerator – right foot pedal and brake – center foot pedal
- Diagnostic centers for power train pressures
- Drawbar, fixed
- Ecological drains for engine oil, radiator coolant and hydraulic oil
- Emergency hook lowering system
- Engine side doors, perforated type, hinged
- Engine hood, perforated type, sloped
- Exhaust pipe extension
- Fan, blower
- Filter, oil, spin-on type
- Filters, drive train system, hydraulic system, engine fuel system
- Final drive seal guard
- Guards: crankcase – hinged with front pull hook, fan, transmission and track roller
- Horn, electric
- Instruments:
  - Gauges: fuel level, engine coolant temp., engine oil pressure, torque converter oil temp., voltmeter, hourmeter, brake lock, emergency hook lowering, joystick control display
  - Warning lights: air cleaner filter, transmission oil filter, hydraulic oil filter, transmission/clutch oil low pressure, counterweights extended, hook top limit position, boom top limit position
  - Audible & visual warning system: low engine coolant level, low engine oil pressure, coolant high temperature, hydraulic oil high temperature
- Light, boom
- Lights w/guards, 2F–2R, tractor mounted
- Load capacity indicator, mechanical, on boom frame
- Muffler, under engine hood, insulated
- Radiator guard doors, louvered, two-piece, hinged
- Rear access platform
- Receptacle, starting/charging
- Seat belt (SAE J386) – 3" wide, retractable
- Seat, deluxe, air suspension type, fabric cover, adjustable with arm rests
- Starting aid – air grid heater
- Starting, 24 V
- Steering, planetary type, 2 speed, left hand single lever control (joystick)
- Strainers, fuel and hydraulic tanks
- Tools compartment
- Torque converter, single stage
- Track adjusters, hydraulic
- Track chain guides, integral
- Track chain sealed and lubricated (LTS) with split master link, 43 links
- Track frames, 8 roller, 2.16 m (85") gauge, non-oscillating type, lifespan lubricated rollers and idlers
- Track shoes 610 mm (24"), severe service
- Transmission, power shift, 3 speeds forward, 3 reverse combined with 2 speed steering provides, 6 speeds forward, 6 reverse
- Water separator, fuel system
- Winch transmission (two separate winches for hook and boom with hydrostatic drive system and planetary transmission)

## OPTIONAL ATTACHMENTS

- Air conditioner/heater/pressurizer/defroster, underseat mounted
- AM/FM CD radio
- Batteries (2) 12 V, 960 CCA, cold start
- Engine enclosures: solid hood and perforated side doors
- Guards:
  - Transmission, severe service
  - Crankcase, severe service, with front pull hook
- Heater/pressurizer/defroster
- Inspection lamp, 24 V, portable, with 6 m (20') cable
- Lights for cab, 2R
- Light, winch, cab mounted (RH)
- Mirrors, 2 pcs. exterior, cab mounted
- ROPS, 2 post (SAE J1040), for standard Cab  
Must be ordered to meet CE requirements
- Starting/charging receptacle plug assembly with cable
- Tools in metal box
- Track shoes, 711 mm (28"), severe service
- Vandalism protection
- Working attachments:
  - boom, welded type, box-section structure, "A" shape frame, length 8500 mm (27'9")
  - boom, length 6500 mm (21'4"), for use with load limit indicator
  - boom, length 8500 mm (27'9"), for use with load limit indicator
  - load limit indicator, Tensotronic
  - hook pulley block limit switch, uppermost position
  - load capacity indicator, mechanical, for 8500 mm (27'9") boom

Specifications subject to change without notice. Illustrations and pictures may include optional equipment and may not include all standard equipment.

# DRESSTA

Kwiatkowskiego 1, 37-450 Stalowa Wola, P O L A N D  
tel.: +48 15 813 5252, 15 813 4556 fax: +48 15 813 4763  
sales@dressta.com.pl www.dressta.com.pl