

Series 2

# DPM2-47 & DPM2-52

FEATURING A 22" BASKET ELEVATOR AND TOP MOUNTED JIB AND WINCH

# DUR-A-LIFT®

CATEGORIES C, D, & E NOW AVAILABLE TO MEET NEW ANSI A92.2 STANDARDS

Experience working heights up to **59 FEET**



## WORK FROM BOTH SIDES

The new top mounted jib and winch allows the operator to rotate the jib to work on either side of the rotating basket.

## 22" BASKET ELEVATOR

The hydraulically activated basket elevator allows the operator to raise the basket 22" without repositioning the booms or the jib.

**180°**  
BASKET  
ROTATION

Options available for double person baskets in the DU and DP series

Convenient access to all the storage compartments right from the basket.



[sales@dur-a-lift.com](mailto:sales@dur-a-lift.com)  
[www.dur-a-lift.com](http://www.dur-a-lift.com)

Dur-A-Lift Inc., P.O. Box 31, George, Iowa 51237  
(877) 4-DURALIFT (877) 438-7254 | Fax: (712) 475-2809

# DPM2-47 & DPM2-52

TELESCOPIC ARTICULATING PERSONNEL OR MATERIAL HANDLING AERIAL LIFT

## SPECIFICATIONS

	DPM2-47	DPM2-52
Height to bottom of platform*	49'	54'
Working height*	54'	59'
Side reach	31'6"	31'6"
Stowed travel height	10'5"	11'6"
Platform capacity (MH MODELS)	400#	400#
Platform capacity using jib (DU MODEL)	400#	400#
Platform capacity not using jib (DU MODEL)	550#	550#
Platform capacity (DP MODELS)	600#	600#
Approximate weight	4300#	4400#
Articulating arm travel	0 to 75	0 to 75
Main boom travel	-30 to 75	-30 to 75
Extension Travel	120"	120"

Minimum GVWR will change significantly depending on make of chassis and stabilizer option. Dur-A-Lift Inc. reserves the right to improve models and change specifications without notice or obligation. Dur-A-Lift equipment meets or exceeds all applicable ANSI Standards as of the date of manufacture.  
\*Maximum height achievable with addition of the optional 22" basket elevator.



## GROUND ACCESS

-35° boom angle allows access to the basket right from ground level.

## STANDARD

- Proportional controls
- Lower override controls
- Engine start/stop from basket
- **Basket access from ground**
- Compensated upper boom
- Insulated models available in category C, D and E
- Hydraulic basket leveling
- **Continuous rotation**
- Joystick and lockout controls
- **180° basket rotator**

## MH FEATURES

- MATERIAL HANDLING
- **Up to 1000# top mounted jib and winch**
  - Upper and lower winch control
  - 400# basket capacity
  - 24"x30" fiberglass basket

## DP FEATURES

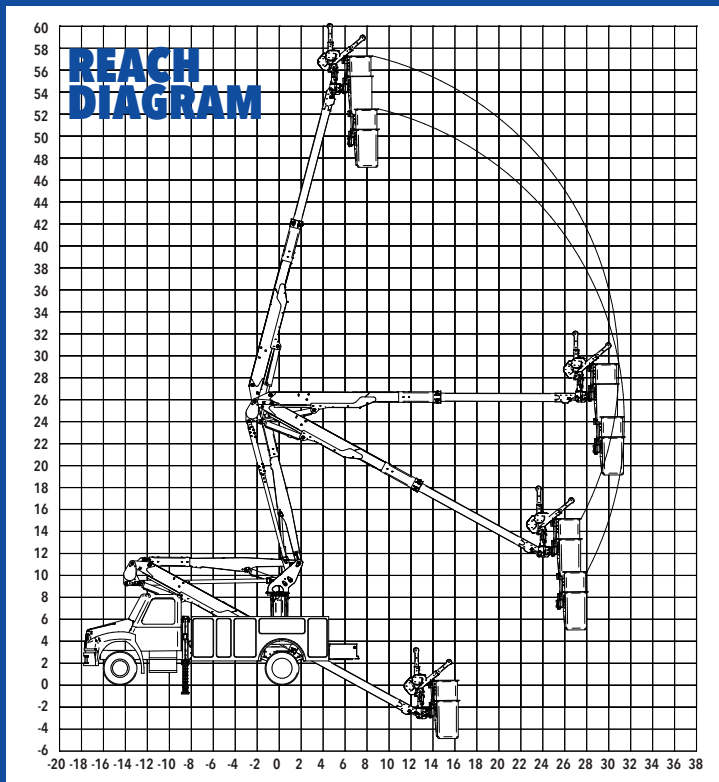
- DUAL PERSON
- 600# basket capacity
  - 24"x42" fiberglass basket
  - 24"x42" aluminum basket

## DU FEATURES

- DUAL CONFIGURATION:  
DUAL PERSON OR MATERIAL HANDLING
- **Up to 1000# top mounted jib and winch**
  - 550# basket capacity when not using winch
  - 400# basket capacity when using winch
  - 24"x42" fiberglass basket
  - 24"x42" aluminum basket

## OPTIONS

- High electrical resistant controls
- Outriggers
- Basket liner for fiberglass baskets
- Fiberglass main and articulating booms
- Tool circuits
- D.C. backup system
- **22" basket elevator**
- Non-insulated versions available
- 110 v outlet at basket (non-insulated only)



This aerial lift is sold and serviced by:



sales@dur-a-lift.com  
www.dur-a-lift.com

Dur-A-Lift Inc., P.O. Box 31, George, Iowa 51237  
(877) 4-DURALIFT (877) 438-7254 | Fax: (712) 475-2809

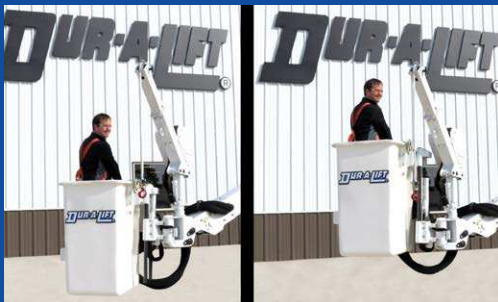
Series 2

# DPM2-36 & DPM2-40

FEATURING A 22" BASKET ELEVATOR AND TOP MOUNTED JIB AND WINCH

# DUR-A-LIFT®

CATEGORIES C, D, & E NOW AVAILABLE TO MEET NEW ANSI A92.2 STANDARDS



## WORK FROM BOTH SIDES

The new top mounted jib and winch allows the operator to rotate the jib to work on either side of the rotating basket.



## 22" BASKET ELEVATOR

The hydraulically activated basket elevator allows the operator to raise the basket 22" without repositioning the booms or the jib.

Working heights up to

# 47 FEET

SIDE REACH UP TO 33' 6"

Convenient access to all the storage compartments right from the basket.



**180°**  
BASKET  
ROTATION

Options available for double person baskets in the DU and DP series



[sales@dur-a-lift.com](mailto:sales@dur-a-lift.com)  
[www.dur-a-lift.com](http://www.dur-a-lift.com)

Dur-A-Lift Inc., P.O. Box 31, George, Iowa 51237  
(877) 4-DURALIFT (877) 438-7254 | Fax: (712) 475-2809



# DPM2-36 & DPM2-40

TELESCOPIC ARTICULATING PERSONNEL OR MATERIAL HANDLING AERIAL LIFT

## SPECIFICATIONS

	DPM2-36	DPM2-40
Height to bottom of platform*	38'	42'
Working height*	43'	47'
Side reach	27' 6"	31' 6"
Stowed travel height	10' 6"	10' 6"
Platform capacity (MH MODEL)	400#	400#
Platform capacity using jib (DU MODEL)	400#	400#
Platform capacity not using jib (DU MODEL)	550#	550#
Platform capacity (DP MODEL)	600#	600#
Approximate weight	3700#	3900#
Articulating arm travel	0 to 75	0 to 75
Main boom travel	-30 to 75	-30 to 75
Extension Travel	96"	120"

Minimum GVWR will change significantly depending on make of chassis and stabilizer option. Dur-A-Lift Inc. reserves the right to improve models and change specifications without notice or obligation. Dur-A-Lift equipment meets or exceeds all applicable ANSI Standards as of the date of manufacture.  
 \*Maximum height achievable with addition of the optional 22" basket elevator.

## STANDARD

- Proportional controls
- Lower override controls
- Engine start/stop from basket
- **Basket access from ground**
- Compensated upper boom
- Insulated models available in category C, D and E
- **Hydraulic basket leveling**
- Rotating basket
- **Continuous rotation**
- Joystick and lockout controls
- **180° basket rotator**



GROUND ACCESS FROM BASKET

## DU FEATURES

DUAL CONFIGURATION:  
DUAL PERSON OR MATERIAL HANDLING

- **Up to 1000# top mounted jib and winch**
- 550# basket capacity when not using winch
- 400# basket capacity when using winch
- 24" X 42" fiberglass basket

## MH FEATURES

MATERIAL HANDLING

- **Up to 1000# top mounted jib and winch**
- Upper and lower winch control
- 400# basket capacity
- 24" X 30" fiberglass basket

## DP FEATURES

DUAL PERSON

- 600# basket capacity
- 24" X 42" fiberglass basket

## OPTIONS

- **22" basket elevator**
- High electrical resistant controls
- Outriggers
- Basket liner for fiberglass baskets
- Fiberglass main and articulating booms
- Tool circuits
- D.C. backup system
- **Aluminum basket available DPM2S**

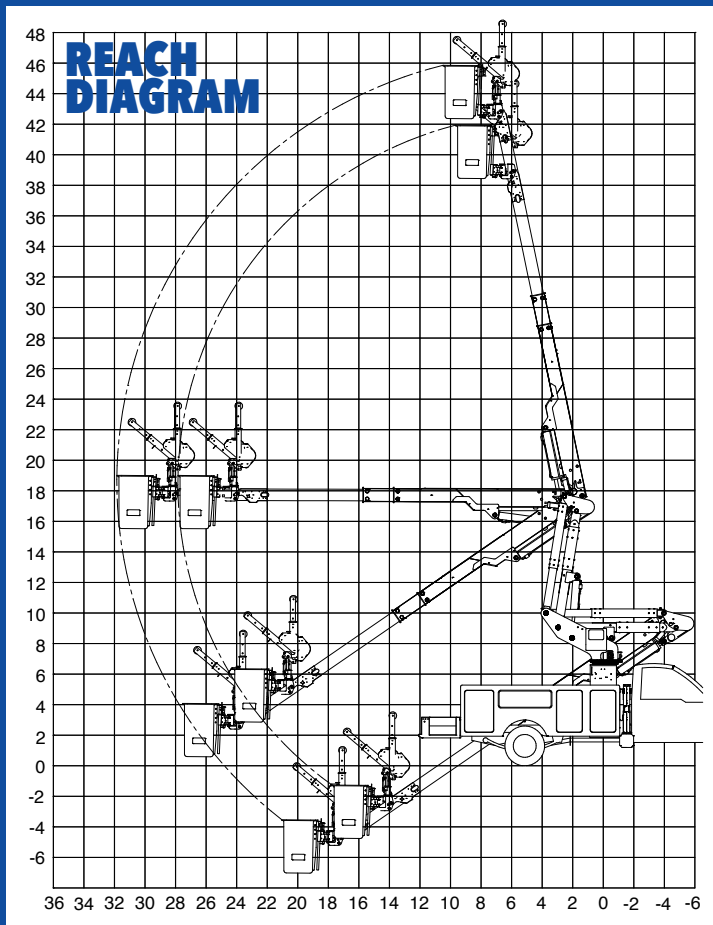


DP MODEL



MH MODEL

This aerial lift is sold and serviced by:



REACH DIAGRAM

36 34 32 30 28 26 24 22 20 18 16 14 12 10 8 6 4 2 0 -2 -4 -6



sales@dur-a-lift.com  
www.dur-a-lift.com

Dur-A-Lift Inc., P.O. Box 31, George, Iowa 51237  
(877) 4-DURALIFT (877) 438-7254 | Fax: (712) 475-2809