

Series 2

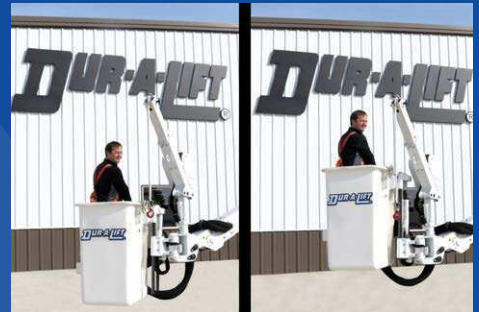
DPM2-47 & DPM2-52

FEATURING A 22" BASKET ELEVATOR AND TOP MOUNTED JIB AND WINCH

DUR-A-LIFT®

CATEGORIES C, D, & E NOW AVAILABLE TO MEET NEW ANSI A92.2 STANDARDS

Experience working heights up to **59 FEET**



WORK FROM BOTH SIDES

The new top mounted jib and winch allows the operator to rotate the jib to work on either side of the rotating basket.

22" BASKET ELEVATOR

The hydraulically activated basket elevator allows the operator to raise the basket 22" without repositioning the booms or the jib.

180°
BASKET
ROTATION

Options available for double person baskets in the DU and DP series

Convenient access to all the storage compartments right from the basket.



sales@dur-a-lift.com
www.dur-a-lift.com

Dur-A-Lift Inc., P.O. Box 31, George, Iowa 51237
(877) 4-DURALIFT (877) 438-7254 | Fax: (712) 475-2809

DPM2-47 & DPM2-52

TELESCOPIC ARTICULATING PERSONNEL OR MATERIAL HANDLING AERIAL LIFT

SPECIFICATIONS

	DPM2-47	DPM2-52
Height to bottom of platform*	49'	54'
Working height*	54'	59'
Side reach	31'6"	31'6"
Stowed travel height	10'5"	11'6"
Platform capacity (MH MODELS)	400#	400#
Platform capacity using jib (DU MODEL)	400#	400#
Platform capacity not using jib (DU MODEL)	550#	550#
Platform capacity (DP MODELS)	600#	600#
Approximate weight	4300#	4400#
Articulating arm travel	0 to 75	0 to 75
Main boom travel	-30 to 75	-30 to 75
Extension Travel	120"	120"

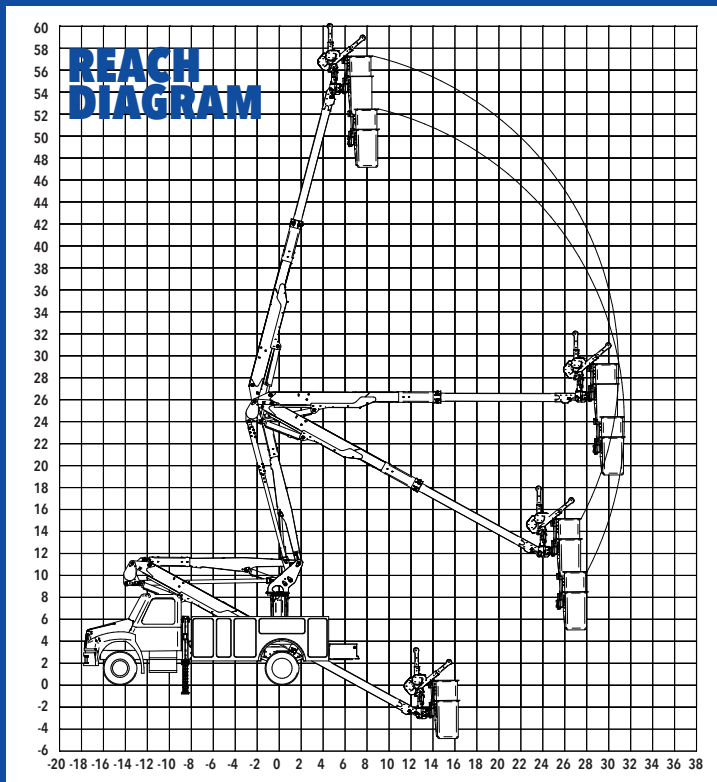
Minimum GVWR will change significantly depending on make of chassis and stabilizer option. Dur-A-Lift Inc. reserves the right to improve models and change specifications without notice or obligation. Dur-A-Lift equipment meets or exceeds all applicable ANSI Standards as of the date of manufacture.

*Maximum height achievable with addition of the optional 22" basket elevator.



GROUND ACCESS

-35° boom angle allows access to the basket right from ground level.



STANDARD

- Proportional controls
- Lower override controls
- Engine start/stop from basket
- Basket access from ground
- Compensated upper boom
- Insulated models available in category C, D and E
- Hydraulic basket leveling
- Continuous rotation
- Joystick and lockout controls
- 180° basket rotator

MH FEATURES

- MATERIAL HANDLING
- Up to 1000# top mounted jib and winch
 - Upper and lower winch control
 - 400# basket capacity
 - 24"x30" fiberglass basket

DP FEATURES

- DUAL PERSON
- 600# basket capacity
 - 24"x42" fiberglass basket
 - 24"x42" aluminum basket

DU FEATURES

- DUAL CONFIGURATION:
DUAL PERSON OR MATERIAL HANDLING
- Up to 1000# top mounted jib and winch
 - 550# basket capacity when not using winch
 - 400# basket capacity when using winch
 - 24"x42" fiberglass basket
 - 24"x42" aluminum basket

OPTIONS

- High electrical resistant controls
- Outriggers
- Basket liner for fiberglass baskets
- Fiberglass main and articulating booms
- Tool circuits
- D.C. backup system
- 22" basket elevator
- Non-insulated versions available
- 110 v outlet at basket (non-insulated only)

This aerial lift is sold and serviced by:



sales@dur-a-lift.com
www.dur-a-lift.com

Dur-A-Lift Inc., P.O. Box 31, George, Iowa 51237
(877) 4-DURALIFT (877) 438-7254 | Fax: (712) 475-2809

Series 2

DPM2-36 & DPM2-40

FEATURING A 22" BASKET ELEVATOR AND TOP MOUNTED JIB AND WINCH

DUR-A-LIFT®

CATEGORIES C, D, & E NOW AVAILABLE TO MEET NEW ANSI A92.2 STANDARDS



WORK FROM BOTH SIDES

The new top mounted jib and winch allows the operator to rotate the jib to work on either side of the rotating basket.



22" BASKET ELEVATOR

The hydraulically activated basket elevator allows the operator to raise the basket 22" without repositioning the booms or the jib.

Working heights up to

47 FEET

SIDE REACH UP TO 33' 6"

Convenient access to all the storage compartments right from the basket.



180° BASKET ROTATION

Options available for double person baskets in the DU and DP series



sales@dur-a-lift.com
www.dur-a-lift.com

Dur-A-Lift Inc., P.O. Box 31, George, Iowa 51237
(877) 4-DURALIFT (877) 438-7254 | Fax: (712) 475-2809

DPM2-36 & DPM2-40

TELESCOPIC ARTICULATING PERSONNEL OR MATERIAL HANDLING AERIAL LIFT

SPECIFICATIONS

	DPM2-36	DPM2-40
Height to bottom of platform*	38'	42'
Working height*	43'	47'
Side reach	27' 6"	31' 6"
Stowed travel height	10' 6"	10' 6"
Platform capacity (MH MODEL)	400#	400#
Platform capacity using jib (DU MODEL)	400#	400#
Platform capacity not using jib (DU MODEL)	550#	550#
Platform capacity (DP MODEL)	600#	600#
Approximate weight	3700#	3900#
Articulating arm travel	0 to 75	0 to 75
Main boom travel	-30 to 75	-30 to 75
Extension Travel	96"	120"

Minimum GVWR will change significantly depending on make of chassis and stabilizer option. Dur-A-Lift Inc. reserves the right to improve models and change specifications without notice or obligation. Dur-A-Lift equipment meets or exceeds all applicable ANSI Standards as of the date of manufacture.
 *Maximum height achievable with addition of the optional 22" basket elevator.

STANDARD

- Proportional controls
- Lower override controls
- Engine start/stop from basket
- **Basket access from ground**
- Compensated upper boom
- Insulated models available in category C, D and E
- **Hydraulic basket leveling**
- Rotating basket
- **Continuous rotation**
- Joystick and lockout controls
- **180° basket rotator**



GROUND ACCESS FROM BASKET

DU FEATURES

DUAL CONFIGURATION:
DUAL PERSON OR MATERIAL HANDLING

- **Up to 1000# top mounted jib and winch**
- 550# basket capacity when not using winch
- 400# basket capacity when using winch
- 24" X 42" fiberglass basket

MH FEATURES

MATERIAL HANDLING

- **Up to 1000# top mounted jib and winch**
- Upper and lower winch control
- 400# basket capacity
- 24" X 30" fiberglass basket

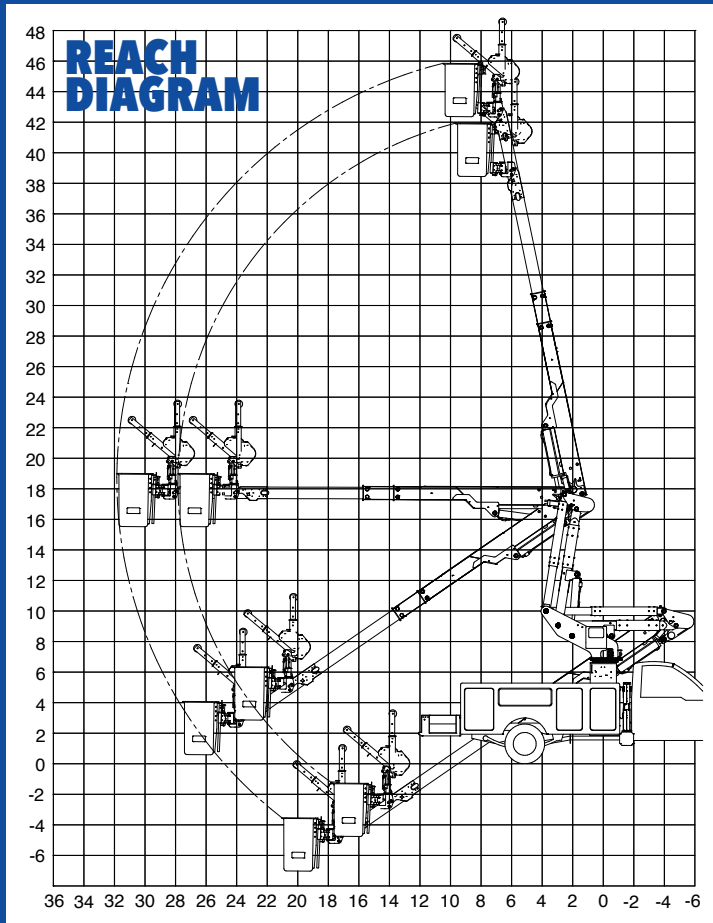
DP FEATURES

DUAL PERSON

- 600# basket capacity
- 24" X 42" fiberglass basket

OPTIONS

- **22" basket elevator**
- High electrical resistant controls
- Outriggers
- Basket liner for fiberglass baskets
- Fiberglass main and articulating booms
- Tool circuits
- D.C. backup system
- **Aluminum basket available DPM2S**



DP MODEL



MH MODEL

This aerial lift is sold and serviced by:



sales@dur-a-lift.com
www.dur-a-lift.com

Dur-A-Lift Inc., P.O. Box 31, George, Iowa 51237
(877) 4-DURALIFT (877) 438-7254 | Fax: (712) 475-2809