



**DESIGN & ENGINEERING INNOVATION**

## PRODUCT PARTS USER'S MANUAL



# MS-SERIES - MS30 / MS40 / MS50 / MS65

(Mobile Stockpiler) - REV 02

EDGE is a registered trademark. COPYRIGHT© 2010

EDGE. 30 Furlough Road, Newmills, Dungannon, Co. Tyrone,  
Northern Ireland. BT714DT.

Tel: 028 8774 0525. Fax: 028 8774 7244

E-mail: [info@edgeinnovate.com](mailto:info@edgeinnovate.com)



**DO NOT ATTEMPT TO OPERATE THIS PRODUCT UNLESS YOU HAVE READ  
AND UNDERSTOOD THESE SAFETY INSTRUCTIONS. FAILURE TO DO SO WILL  
INCREASE THE RISK OF INJURY OR MAY RESULT IN DEATH.**



**[www.edgeinnovate.com](http://www.edgeinnovate.com)**

- 1. GENERAL INFORMATION**
- 2. PRODUCT PARTS ORDERING PROCEDURE**
- 3. CONTACT DETAILS**
- 4. PRODUCT COMPONENT IDENTIFICATION**
- 5. CONTENTS**

### **1. General Information regarding Product Parts**

Customers should always order genuine EDGE recommended parts. Product parts must comply with requirements as specified by the manufacturer. Edge cannot be responsible for any damage arising from use of any parts not supplied by EDGE, and the guarantee will be invalid.

### **2. Product Parts Ordering Procedure**

To ensure delivery of your EDGE product parts, when ordering please quote:

- machine serial number
- illustration number and item number
- part number
- part description
- quantity required
- name and address
- method of delivery

#### **2.1 Spare Parts related to the engine**

For ordering spare parts related to the engine, a parts list issued by the manufacturers has been included with this manual. Follow the procedure as laid down within this parts list .

### **3. EDGE contact details**

#### **Contact Information:**

EDGE Design and Innovation  
Manufacturers of Quarry Plant and Recycling Equipment - Subcontract Specialists  
30 Farlough Road, Newmills, Dungannon, Co. Tyrone, N. Ireland. BT71 4DT

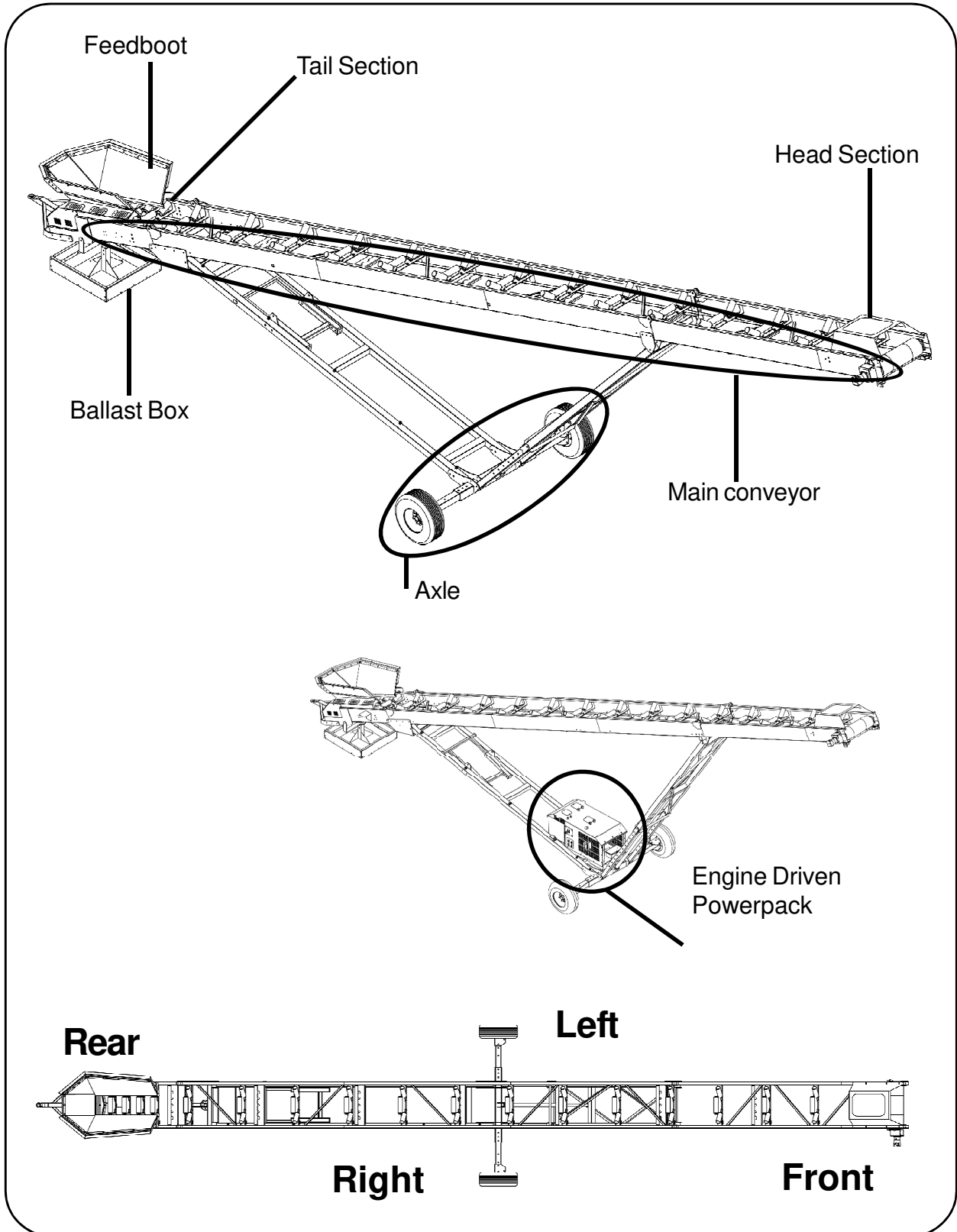
E-mail: [info@edgeinnovate.com](mailto:info@edgeinnovate.com)

Web: [www.edgeinnovate.com](http://www.edgeinnovate.com)

Tel: +44 (0) 28 8774 0525

Fax: +44 (0) 28 8774 7244

4. Product Component Identification



**4. Product Parts Order Form**

**Fax : + 44 (0) 28 8774 7244**

**Email: [info@edgeinnovate.com](mailto:info@edgeinnovate.com)**

**EDGE PRODUCT PARTS**

**ORDER FORM**

<b>EDGE M/C SERIAL NO.:</b>	
<b>YEAR OF MANUFACTURE:</b>	
<b>ENGINE TYPE AND SERIAL</b>	
<b>OPERATING M/C HOURS:</b>	

<b>CUSTOMER / DEALER NAME</b>	
ADDRESS	
PHONE:	
FAX:	
EMAIL:	

<b>DELIVERY DETAILS</b>	
ADDRESS	
PHONE:	
FAX:	
EMAIL:	

<b>MACHINE TYPE</b>	
<b>MACHINE SERIAL NO.</b>	

**REQUIRED PARTS**

	<b>PART NO.</b>	<b>DESCRIPTION</b>	<b>QUANTITY</b>	<b>FIGURE</b>	<b>ITEM NO.</b>
1					
2					
3					
4					
5					
6					
7					
8					
9					
10					
11					
12					
13					
14					
15					
16					
17					
18					
19					
20					



**5. Contents****MS30**

<b>FIGURE 01-01</b>	<b>MS30 CONVEYOR OPTIONS</b>	<b>PAGE 6 - 7</b>
<b>FIGURE 01-02</b>	<b>MS30 CONVEYOR WITH EXTENSIONS</b>	<b>PAGE 8 - 9</b>
<b>FIGURE 01-03</b>	<b>MS30 CONVEYOR SUPPORTS</b>	<b>PAGE 10-12</b>
<b>FIGURE 01-04</b>	<b>MS30 RECOMMENDED PARTS</b>	<b>PAGE 13-14</b>

**MS40**

<b>FIGURE 02-01</b>	<b>MS40 CONVEYOR TAIL LOWER SECTION</b>	<b>PAGE 16-17</b>
<b>FIGURE 02-02</b>	<b>MS40 CONVEYOR HEAD UPPER SECTION</b>	<b>PAGE 18-19</b>
<b>FIGURE 02-03</b>	<b>MS40 CONVEYOR SUPPORTS</b>	<b>PAGE 20-21</b>
<b>FIGURE 02-04</b>	<b>MS40 RECOMMENDED PARTS</b>	<b>PAGE 22-23</b>

**MS50**

<b>FIGURE 03-01</b>	<b>MS50 CONVEYOR TAIL LOWER SECTION</b>	<b>PAGE 24-25</b>
<b>FIGURE 03-02</b>	<b>MS50 CONVEYOR HEAD UPPER SECTION</b>	<b>PAGE 26-27</b>
<b>FIGURE 03-03</b>	<b>MS50 CONVEYOR AXLE &amp; SUPPORTS</b>	<b>PAGE 28-29</b>
<b>FIGURE 03-04</b>	<b>MS50 TOWBAR &amp; BALLAST BOX</b>	<b>PAGE 30-31</b>
<b>FIGURE 03-05</b>	<b>MS50 RECOMMENDED PARTS</b>	<b>PAGE 32-33</b>

**MS65**

<b>FIGURE 04-01</b>	<b>MS65 CONVEYOR TAIL LOWER SECTION</b>	<b>PAGE 34-35</b>
<b>FIGURE 04-02</b>	<b>MS65 CONVEYOR MIDDLE SECTION</b>	<b>PAGE 36-37</b>
<b>FIGURE 04-03</b>	<b>MS65 CONVEYOR HEAD SECTION</b>	<b>PAGE 38-39</b>
<b>FIGURE 04-04</b>	<b>MS65 CONVEYOR SUPPORTS</b>	<b>PAGE 40-41</b>
<b>FIGURE 04-05</b>	<b>MS65 CONVEYOR SUPPORTS</b>	<b>PAGE 42-43</b>

**OPTIONS - MS40 / MS50 / MS65**

<b>FIGURE 05-01</b>	<b>MS-SERIES - ELECTRIC HEAD MOTOR</b>	<b>PAGE 44-45</b>
<b>FIGURE 05-02</b>	<b>MS-SERIES - IMPACT BARS</b>	<b>PAGE 46-47</b>
<b>FIGURE 05-03</b>	<b>MS-SERIES - POWERPACK</b>	<b>PAGE 48-49</b>

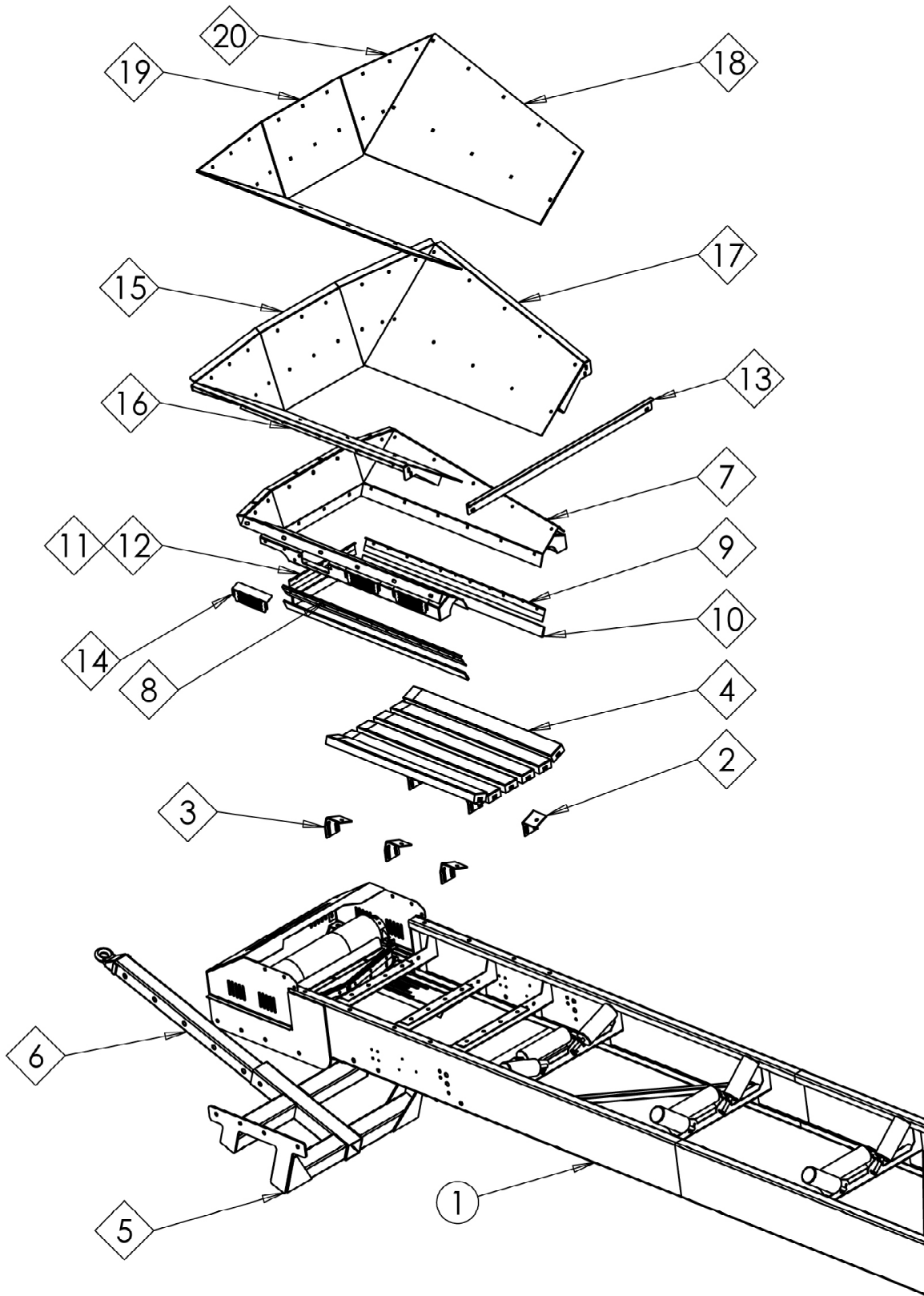


FIGURE : 01 - 01  
( MS-30 OPTIONS)

<b>ITEM NO.</b>	<b>PART NO.</b>	<b>REV.</b>	<b>DESCRIPTION</b>	<b>QTY.</b>
1	173-30-101	0	Tail Section Welded Assembly	1
2	153-30-103	0	L/H Impact Bed Bracket	3
3	153-30-102	0	R/H Impact Bed Bracket	3
4	18-01-1240	0	Impact Bed Runner	6
5	173-30-102	0	MS30 Towbar Option	1
6	173-30-103	0	Drawing Eye Assembly	1
7	173-30-201	0	Extra Wide Feed Boot Weldment	1
8	136-30-201	0	Feedboot Rubber Side Clamp - RHS	1
9	136-30-202	0	Feedboot Rubber Side Clamp - LHS	1
10	12-10-1310	0	Feedboot Side Rubber (1515 x 60mm)	2
11	136-30-203	0	Feedboot Rubber Back Clamp	1
12	12-10-1306	0	Feedboot Back Rubber (510 x 60mm)	1
13	173-30-202	0	Cross Brace	1
14	173-30-203	0	Inspection Plate	6
15	173-30-211	0	Rear Extensions	1
16	173-30-221	0	R/H Extensions	1
17	173-30-222	0	L/H Extensions	1
18	173-30-204	0	Side Wear Plate	2
19	173-30-205	0	Rear Wear Plate	1
20	173-30-206	0	Side Back Wear Plate	2

**LISTINGS TO FIGURE : 01 - 01  
( MS-30 OPTIONS)**

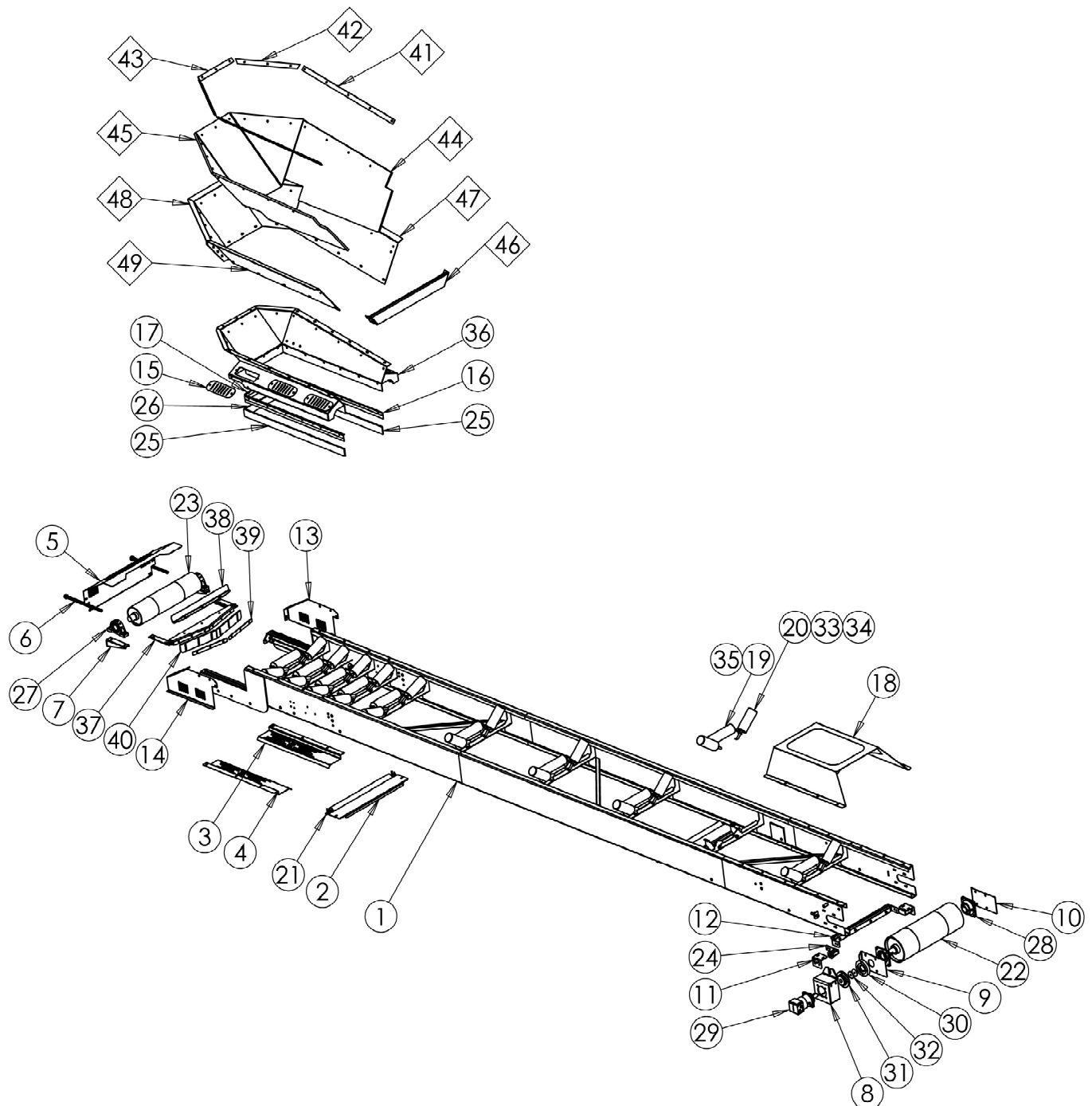


FIGURE : 01 - 02  
( MS-30 CONVEYOR WITH EXTENSIONS)

ITEM NO.	PART NO.	REV.	DESCRIPTION	QTY.
1	173-30-101	0	Tail Section Welded Assembly	1
2	173-70-001	0	Disc Return Nipguard	2
3	173-70-004	0	Guard Bottom - LHS	1
4	173-70-005	0	Guard Bottom - RHS	1
5	149-70-101	0	Conveyor Rear Guard	1
6	153-30-109	0	Tail Drum Adjuster Bar	2
7	136-30-102	0	Tail Drum Adjuster Assembly	2
8	136-30-502	0	Head Drum Motor Cover	1
9	136-30-503	0	Head Drum Adjuster Plate	1
10	136-30-504	0	Head Drum Adjuster Plate	1
11	136-30-505	0	Head Drum Scraper Mounting Bracket	2
12	136-30-506	0	Head Drum Scraper Assembly	1
13	136-70-004	0	Conveyor Guard - LHS	1
14	136-70-005	0	Conveyor Guard - RHS	1
15	136-70-002	0	Feedboot Support Guard	6
16	136-30-201	0	Feedboot Rubber Side Clamp	2
17	136-30-203	0	Feedboot Rubber Back Clamp	1
18	139-10-110	0	Head Drum Guard	1
19	10-01-0003	0	356x102 Center Roller (Shaft: 25x20)	10
20	10-02-0002	0	Wing Roller	20
21	10-03-0004	0	880x75 Return Roller (Shaft: 75x20)	2
22	11-01-0130	0	Head Drum Assembly	1
23	11-02-0130	0	Tail Drum Assembly	1
24	11-80-0001	0	Rosta Tensioner	2
25	12-10-1302	0	Feedboot Side Rubber	2
26	12-10-1303	0	Feedboot Back Rubber	1
27	13-01-0002	0	2.5" Pillar Block Bearing	2
28	13-02-4002	0	2 1/2" Flange Bearing	2
29	15-01-0003	0	OMT500-40mm Keyed Shaft Head Drum Motor	1
30	19-03-0001	0	HRC Coupling RM2517_F_RC_2.5in	1
31	19-03-0002	0	HRC Coupling RM2517_M_RC_2.5in	1
32	19-03-0003	0	Coupling Washer 2.5in	2
33	21-01-1008	0	U-Bolt	24
34	21-01-3006	0	J-Bolt	20
35	22-03-1003	0	R-Clip 201.212V	17
36	136-30-200	0	Feedboot Assembly	1
37	136-30-104	0	Plough Scraper Assembly	1
38	136-30-108	0	Tail Drum Scraper Plate	1

**LISTINGS TO FIGURE : 01 - 02  
( MS-30 CONVEYOR WITH EXTENSIONS)**

<b>ITEM NO.</b>	<b>PART NO.</b>	<b>REV.</b>	<b>DESCRIPTION</b>	<b>QTY.</b>
39	136-30-109	0	Tail Drum Scraper Mounting Plate	2
40	12-10-1301	0	Scraper Rubber	1
<b>Options</b>				
41	136-30-216	0	Feedboot Rubber Upper Side Clamp	2
42	136-30-215	0	Feedboot Rubber Upper Rear Clamp	2
43	136-30-214	0	Feedboot Rubber Upper Rear Clamp	1
44	12-10-1305	0	Feedboot Rubber Side Liner	2
45	12-10-1304	0	Feedboot Rubber Liner	1
46	136-30-213	0	Feedboot Cross Brace	1
47	136-30-211	0	Feedboot Ext Side Assembly - LHS	1
48	136-30-212	0	Feedboot Ext Back Assembly	1
49	136-30-210	0	Feedboot Extension Side - RHS	1

**CONTINUED LISTINGS TO FIGURE : 01 - 02  
( MS-30 CONVEYOR WITH EXTENSIONS)**



**THIS PAGE HAS BEEN LEFT INTENTIONALLY BLANK FOR CHAPTER  
SEQUENCE PURPOSES.**

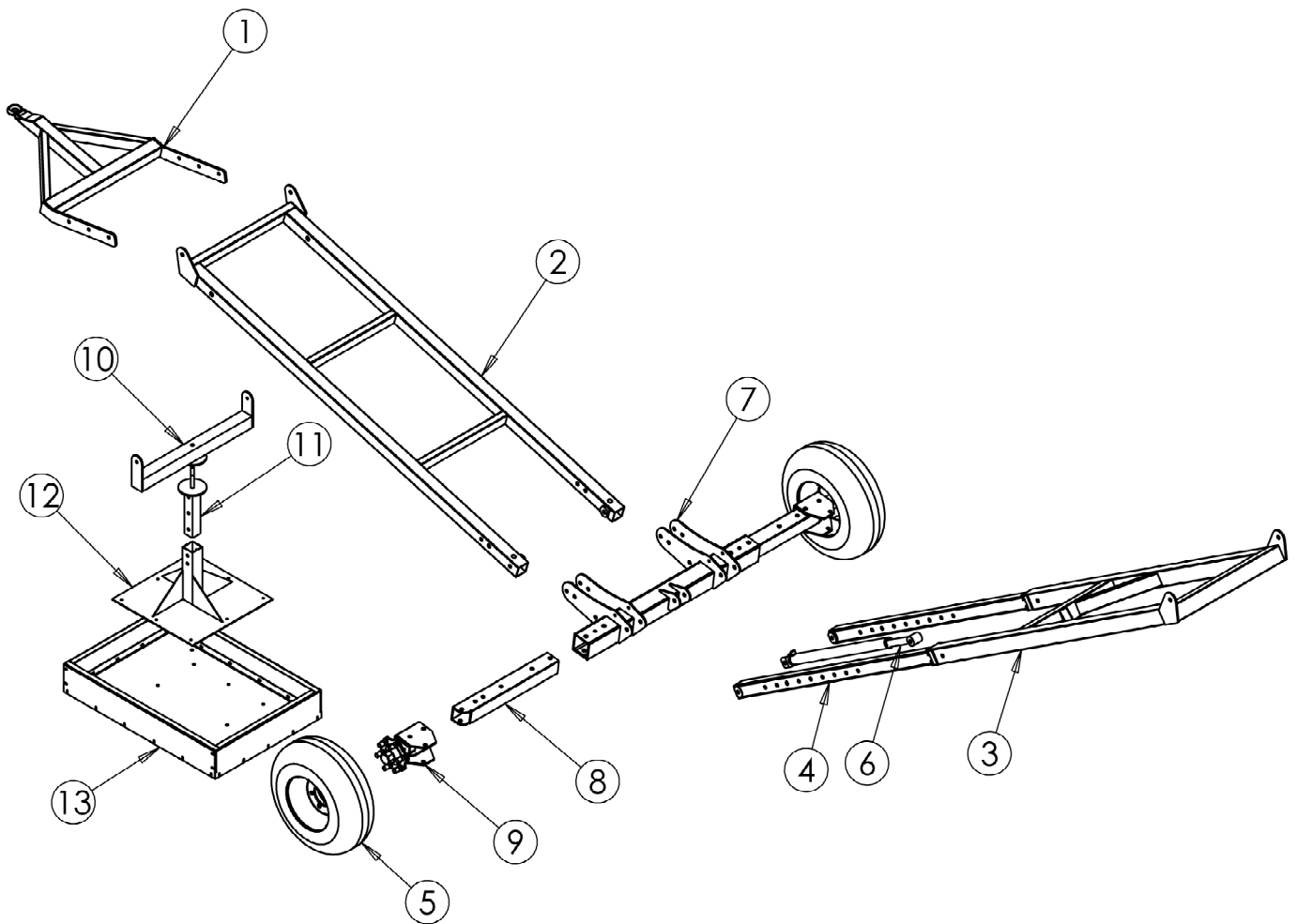


FIGURE : 01 - 03  
( MS-30 CONVEYOR SUPPORTS)



<b>ITEM NO.</b>	<b>PART NO.</b>	<b>REV.</b>	<b>DESCRIPTION</b>	<b>QTY.</b>
1	136-20-110	0	Towbar Assembly	1
2	173-20-100	0	MS30 Legs	1
3	173-20-101	0	Outer Box Axle Support Assembly	1
4	173-20-102	0	Telescopic Leg Inner	2
5	20-09-6120	0	Conveyor Wheel Assembly	2
6	25-05-0150	0	Hydraulic Conveyor Support Ram	1
7	136-20-200	0	MS30,40,50,65 Axle Assembly	1
8	136-20-201	0	Inner Stub Axle Assembly	2
9	136-20-202	0	Outer Stub Axle Assembly	2
10	136-20-102	0	Ballast Box To Conveyor Mounting Assembly	1
11	136-20-101	0	Telescopic Box Assembly	1
12	136-20-103	0	Ballast Box Base Assembly	1
13	136-20-104	0	Ballast Box	1

**LISTINGS TO FIGURE : 01 - 03  
( MS-30 CONVEYOR SUPPORTS)**

<b>ITEM NO.</b>	<b>PART NO.</b>	<b>REV.</b>	<b>DESCRIPTION</b>	<b>QTY.</b>
1	136-30-506	0	Head Drum Scraper Assembly	1
2	10-01-0003	0	356x102 Center Roller (Shaft: 25x20)	10
3	10-02-0002	0	Wing Roller	20
4	10-03-0004	0	880x75 Return Roller (Shaft: 75x20)	2
5	11-01-0130	0	Head Drum Assembly	1
6	11-02-0130	0	Tail Drum Assembly	1
7	12-10-1302	0	Feedboot Side Rubber	2
8	12-10-1303	0	Feedboot Back Rubber	1
9	13-01-0002	0	2.5" Pillar Block Bearing	2
10	13-02-4002	0	2 1/2" Flange Bearing	2
11	15-01-0003	0	OMT500-40mm Keyed Shaft Head Drum Motor	1
12	19-03-0001	0	HRC Coupling RM2517_F_RC_2.5in	1
13	19-03-0002	0	HRC Coupling RM2517_M_RC_2.5in	1
14	19-03-0003	0	Coupling Washer 2.5in	2
15	21-01-1008	0	U-Bolt	24
16	21-01-3006	0	J-Bolt	20
17	22-03-1003	0	R-Clip 201.212V	17
18	136-30-108	0	Tail Drum Scraper Plate	1
19	12-10-1305	0	Feedboot Rubber Side Liner	2
20	12-10-1304	0	Feedboot Rubber Liner	1
21	18-01-1240	0	Impact Bed Runner	6
22	12-10-1310	0	Feedboot Side Rubber (1515 x 60mm)	2
23	12-10-1306	0	Feedboot Back Rubber (510 x 60mm)	1
24	173-30-204	0	Side Wear Plate	2
25	173-30-205	0	Rear Wear Plate	1
26	173-30-206	0	Side Back Wear Plate	2
27	25-05-0150	0	Hydraulic Conveyor Support Ram	1

**LISTINGS TO FIGURE : 01 - 04  
( MS-30 RECOMMENDED SPARES)**



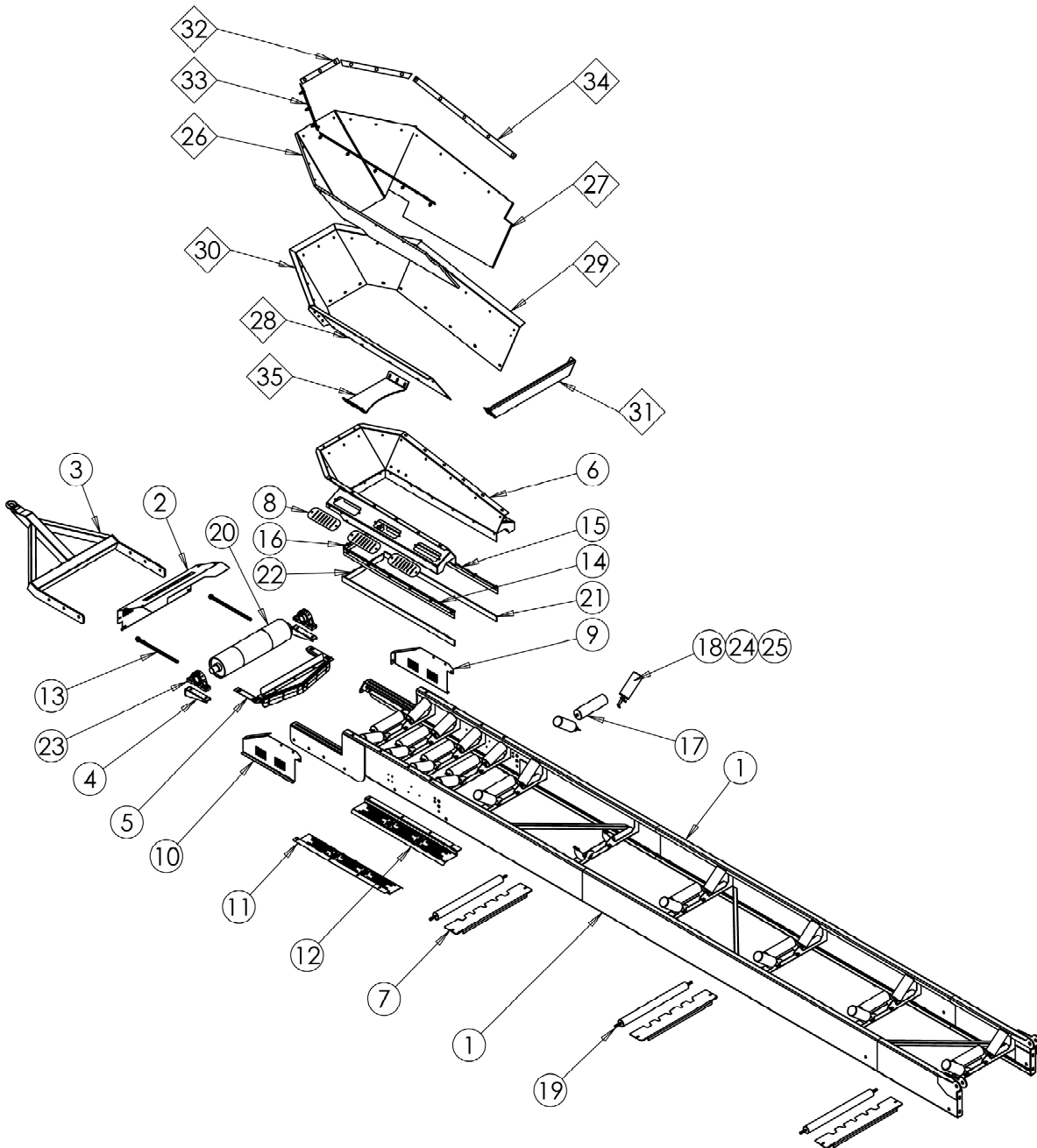


FIGURE : 02- 01  
 ( MS40 CONVEYOR TAIL LOWER SECTION )

ITEM NO.	PART NO.	REV.	DESCRIPTION	QTY.
1	149-30-101	0	Tail Section Welded Assembly	1
2	149-70-101	0	Conveyor Rear Guard	1
3	136-20-110	0	Towbar Assembly	1
4	136-30-102	0	Tail Drum Adjuster Assembly	2
5	136-30-103	0	Plough Scraper Assembly	1
6	136-30-200	0	Feedboot Assembly	1
7	136-70-001	0	Disc Return Nipguard	3
8	136-70-002	0	Feedboot Support Guard	6
9	136-70-004	0	Conveyor Guard - LHS	1
10	136-70-005	0	Conveyor Guard - RHS	1
11	136-70-006	0	Guard Bottom - RHS	1
12	136-70-007	0	Guard Bottom - LHS	1
13	153-30-109	0	Tail Drum Adjuster Bar	2
14	136-30-201	0	Feedboot Rubber Side Clamp - RHS	1
15	136-30-202	0	Feedboot Rubber Side Clamp - LHS	1
16	136-30-203	0	Feedboot Rubber Back Clamp	1
17	10-01-0003	0	356x102 Center Roller (Shaft: 25x20)	10
18	10-02-0002	0	Wing Roller	20
19	10-03-0004	0	880x75 Return Roller (Shaft: 75x20)	3
20	11-02-0130	0	Tail Drum Assembly	1
21	12-10-1310	0	Feedboot Side Rubber (1515 x 60mm)	2
22	12-10-1311	0	Feedboot Back Rubber (510 x 60mm)	1
23	13-01-0002	0	2.5" Pillar Block Bearing	2
24	21-01-1008	0	U-Bolt	26
25	21-01-3006	0	J-Bolt	20
<b>Options</b>				
26	12-10-1304	0	Feedboot Rubber Liner	1
27	12-10-1305	0	Feedboot Rubber Side Liner	2
28	136-30-210	0	Feedboot Ext Side Assembly - RHS	1
29	136-30-211	0	Feedboot Ext Side Assembly - LHS	1
30	136-30-212	0	Feedboot Ext Back Assembly	1
31	136-30-213	0	Feedboot Cross Brace	1
32	136-30-214	0	Feedboot Rubber Upper Rear Clamp	1
33	136-30-215	0	Feedboot Rubber Upper Rear Clamp	2
34	136-30-216	0	Feedboot Rubber Upper Side Clamp	2
35	136-30-230	0	Rock Shelf	1

**LISTINGS TO FIGURE : 02- 01  
( MS40 CONVEYOR TAIL LOWER SECTION )**

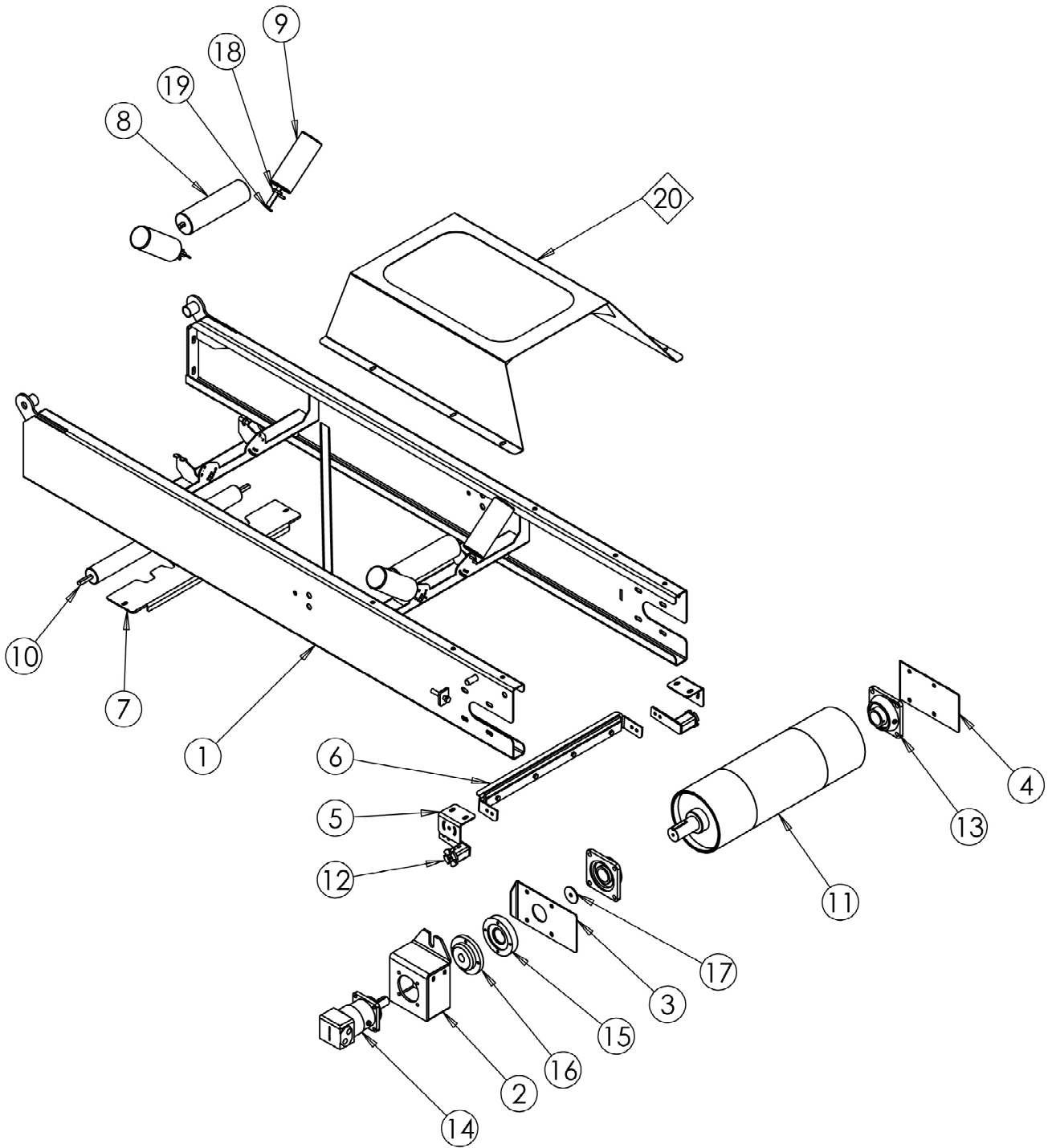


FIGURE : 02- 02  
( MS40 CONVEYOR HEAD SECTION )

ITEM NO.	PART NO.	REV.	DESCRIPTION	QTY.
1	149-30-301	0	Conveyor Head Section	1
2	136-30-502	0	Head Drum Motor Cover	1
3	136-30-503	0	Head Drum Adjuster Plt	1
4	136-30-504	0	Head Drum Adjuster Plt	1
5	136-30-505	0	Head Drum Scraper Mtg Brk	2
6	136-30-506	0	Head Drum Scraper Assembly	1
7	136-70-001	0	Disc Return Nipguard	1
8	10-01-0003	0	356x102 Center Roller (Shaft: 25x20)	2
9	10-02-0002	0	Wing Roller	4
10	10-03-0004	0	880x75 Return Roller (Shaft: 75x20)	1
11	11-01-0140	0	Head drum	1
12	11-80-0001	0	Rosta Tensioner	2
13	13-02-4002	0	2 1/2" Flange Bearing	2
14	15-01-0003	0	OMT500-40mm Keyed Shaft Head Drum Motor	1
15	19-03-0001	0	HRC Coupling RM2517_F_RC_2.5in	1
16	19-03-0002	0	HRC Coupling RM2517_M_RC_2.5in	1
17	19-03-0003	0	Coupling Washer 2.5in	1
18	21-01-1008	0	U-Bolt	6
19	21-01-3006	0	J-Bolt	4
<b>Options</b>				
20	139-10-110	0	Head Drum Guard	1

LISTINGS TO FIGURE : 02- 02  
( MS40 CONVEYOR HEAD SECTION )

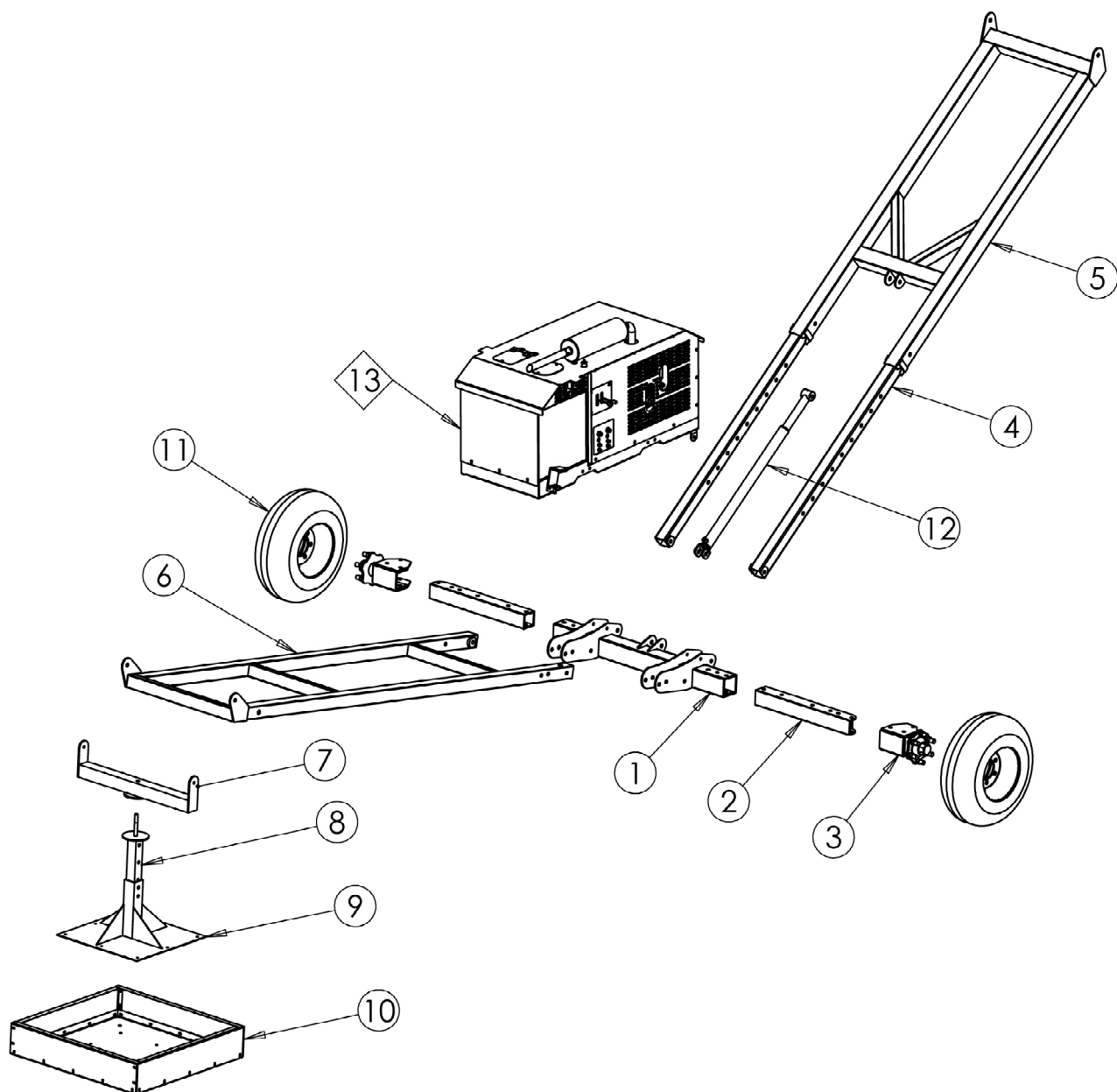


FIGURE : 02 - 03  
( MS40 CONVEYOR SUPPORTS )



<b>ITEM NO.</b>	<b>PART NO.</b>	<b>REV.</b>	<b>DESCRIPTION</b>	<b>QTY.</b>
1	136-20-200	0	MS40,50,65 Axle Assembly	1
2	136-20-201	0	Inner Stub Axle Assembly	2
3	136-20-202	0	Outer Stub Axle Assembly	2
4	149-20-106	0	Inner Telescopic Assembly	2
5	149-20-101	0	Outer Box Axle Support Assembly	1
6	149-20-100	0	Rear Axle Support Assembly	1
7	136-20-102	0	Ballast Box to Conveyor Mounting Assembly	1
8	136-20-101	0	Telescopic Box Assembly	1
9	136-20-103	0	Ballast Box Base Assembly	1
10	136-20-111	0	Ballast Box	1
11	20-09-6120	0	Conveyor Wheel Assembly	2
12	25-05-0300	0	Hydraulic Cylinder	1
<b>Options</b>				
13	166-00-000	0	Power Pack	1

**LISTINGS TO FIGURE : 02 - 03  
( MS40 CONVEYOR SUPPORTS )**

ITEM NO.	PART NO.	REV.	DESCRIPTION	QTY.
1	10-01-0003	0	356x102 Center Roller (Shaft: 25x20)	12
2	10-02-0002	0	Wing Roller	24
3	10-03-0004	0	880x75 Return Roller (Shaft: 75x20)	4
4	11-01-0140	0	Head Drum	1
5	13-02-4002	0	2 1/2" Flange Bearing	2
6	15-01-0003	0	OMT500-40mm Keyed Shaft Head Drum Motor	1
7	19-03-0001	0	HRC Coupling RM2517_F_RC_2.5in	1
8	19-03-0002	0	HRC Coupling RM2517_M_RC_2.5in	1
9	21-01-1008	0	U-Bolt	6
10	21-01-3006	0	J-Bolt	4
14	11-02-0130	0	Tail Drum Assembly	1
15	12-10-1310	0	Feedboot Side Rubber (1515 x 60mm)	2
16	12-10-1311	0	Feedboot Back Rubber (510 x 60mm)	1
17	13-01-0002	0	2.5" Pillar Block Bearing	2
18	21-01-1008	0	U-Bolt	32
19	21-01-3006	0	J-Bolt	24
20	12-10-1304	0	Feedboot Rubber Liner	1
21	12-10-1305	0	Feedboot Rubber Side Liner	2
22	25-05-0300	0	Hydraulic Cylinder	1

**FIGURE : 02- 04**  
**( MS40 RECOMMENDED SPARES )**



**THIS PAGE HAS BEEN LEFT INTENTIONALLY BLANK FOR CHAPTER  
SEQUENCE PURPOSES.**

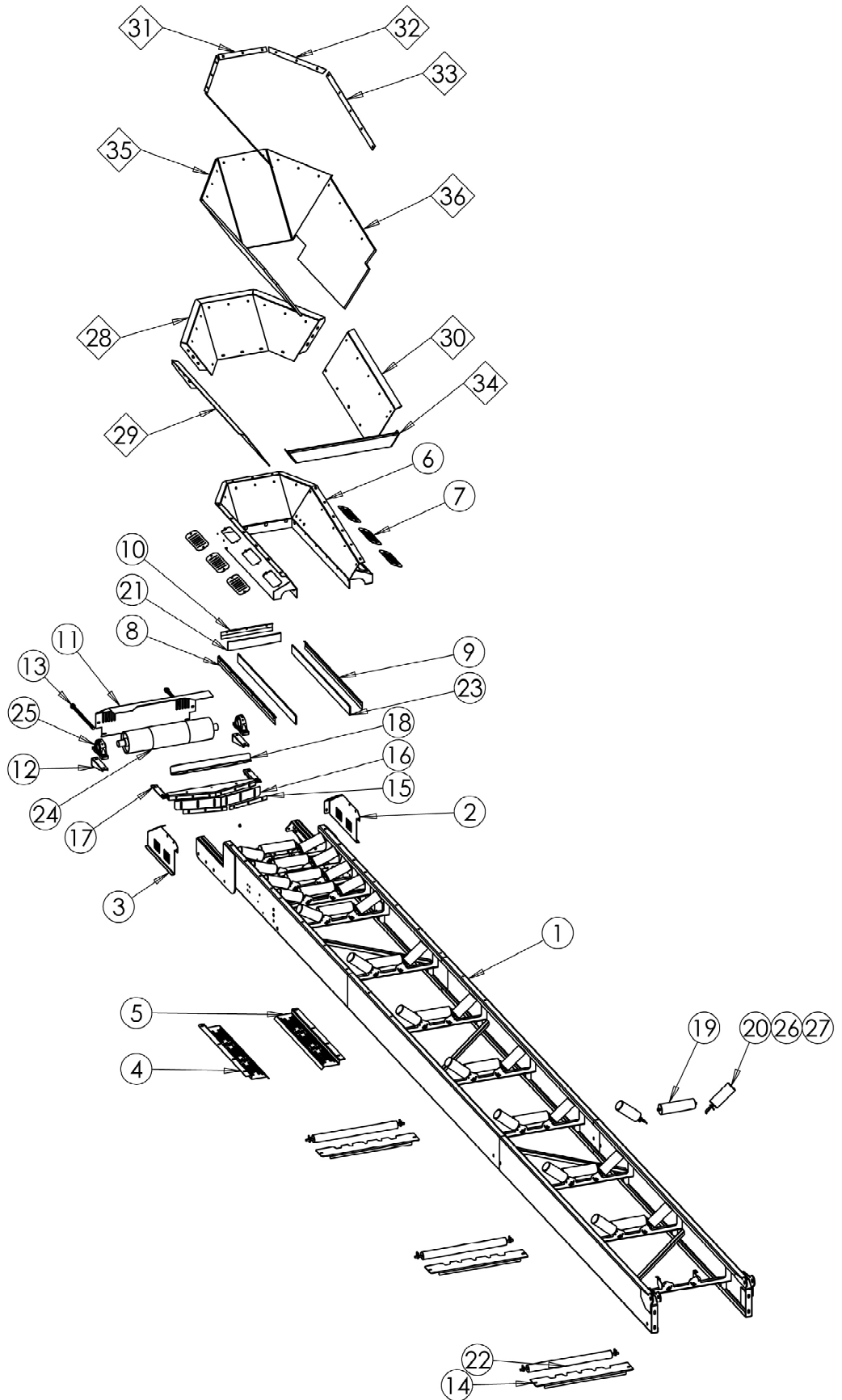


FIGURE : 03- 01  
( MS50 CONVEYOR TAIL LOWER SECTION )

<b>ITEM NO.</b>	<b>PART NO.</b>	<b>REV.</b>	<b>DESCRIPTION</b>	<b>QTY.</b>
1	136-30-101	0	Tail Section Welded Assembly	1
2	136-70-004	0	Conveyor Guard - LHS	1
3	136-70-005	0	Conveyor Guard - RHS	1
4	136-70-006	0	Guard Bottom - RHS	1
5	136-70-007	0	Guard Bottom - LHS	1
6	136-30-200	0	Feedboot Assembly	1
7	136-70-002	0	Feedboot Support Guard	6
8	136-30-201	0	Feedboot Rubber Side Clamp - RHS	1
9	136-30-202	0	Feedboot Rubber Side Clamp - LHS	1
10	136-30-203	0	Feedboot Rubber Back Clamp	1
11	136-70-003	0	Conveyor Rear Guard	1
12	136-30-102	0	Tail Drum Adjuster Assembly	2
13	153-30-109	0	Tail Drum Adjuster Bar	2
14	136-70-001	0	Disc Return Nipguard	3
15	136-30-103-02	0	Plough Scraper Mounting Plate	2
16	12-10-1301	0	Plough Scraper Rubber	1
17	136-30-104	0	Plough Scraper Assembly	1
18	136-30-103-01	0	Scraper Plate	1
19	10-01-0003	0	Center Roller (356x102mm)	12
20	10-02-0002	0	Wing Roller	24
21	12-10-1303	0	Feedboot Back Rubber	1
22	10-03-0004	0	Return Roller (880x75mm)	3
23	12-10-1302	0	Rubber (90x10mm)	2
24	11-02-0130	0	Tail Drum Assembly	1
25	13-01-0002	0	2.5" Pillar Block Bearing	2
26	21-01-1008	0	U-Bolt	30
27	21-01-3006	0	J-Bolt	24
<b>Options</b>				
28	136-30-212	0	Feedboot Ext Back Assembly	1
29	136-30-210	0	Feedboot Ext Side Assembly - RHS	1
30	136-30-211	0	Feedboot Ext Side Assembly - LHS	1
31	136-30-214	0	Feedboot Rubber Upper Rear Clamp	1
32	136-30-215	0	Feedboot Rubber Upper Rear Clamp	2
33	136-30-216	0	Feedboot Rubber Upper Side Clamp	2
34	12-10-1304	0	Feedboot Cross Brace	1
35	12-10-1305	0	Feedboot Rubber Liner	2
36	136-30-213	0	Feedboot Rubber Side Liner	1

**LISTINGS TO FIGURE : 03- 01  
( MS50 CONVEYOR TAIL LOWER SECTION )**

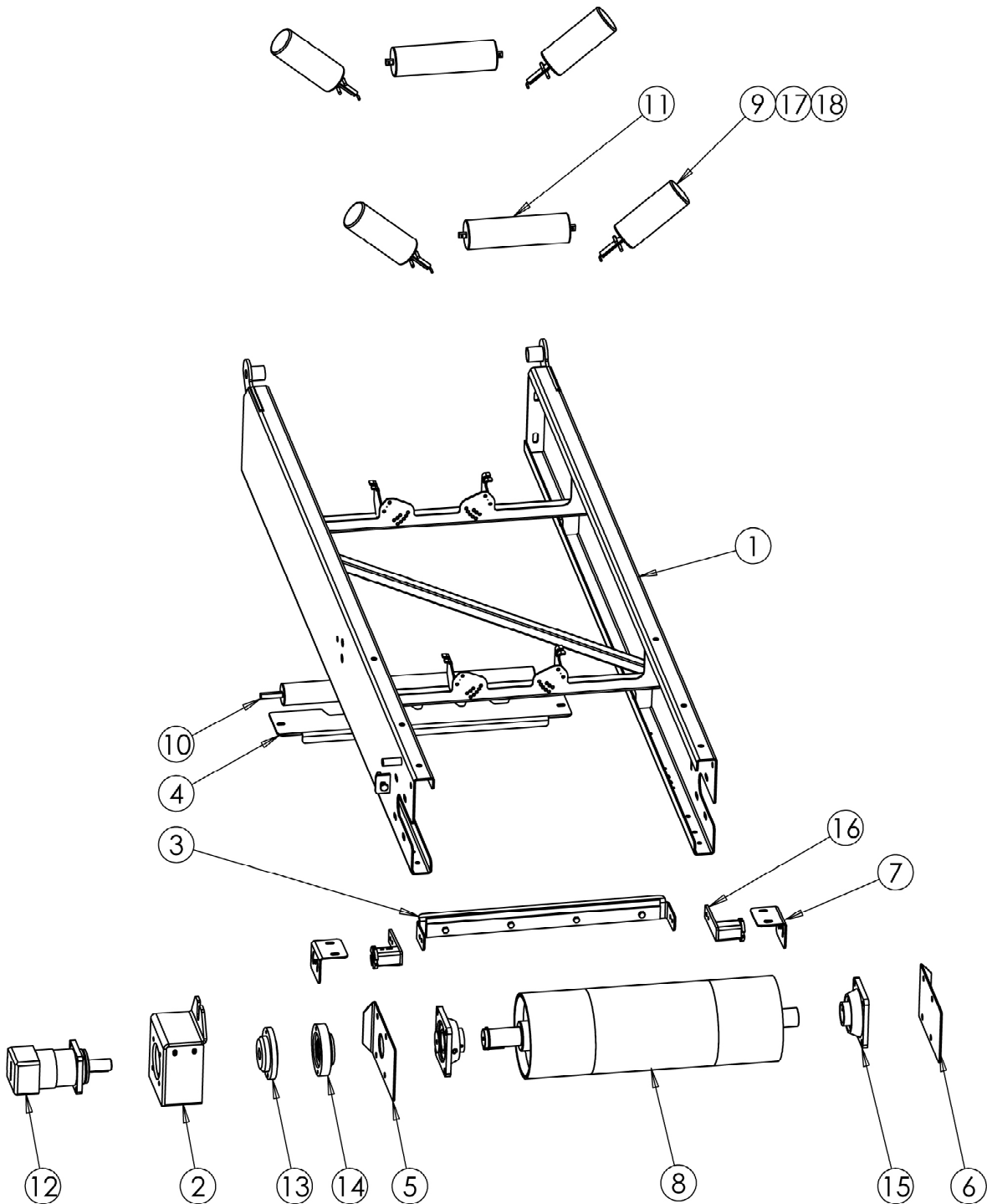


FIGURE : 03- 02  
( MS50 CONVEYOR HEAD UPPER SECTION )

<b>ITEM NO.</b>	<b>PART NO.</b>	<b>REV.</b>	<b>DESCRIPTION</b>	<b>QTY.</b>
1	136-30-501	0	Conveyor Head Section	1
2	136-30-502	0	Head Drum Motor Cover	1
3	136-30-506	0	Head Drum Scraper Assembly	1
4	136-70-001	0	Disc Return Nipguard	1
5	136-30-503	0	L/H Head Drum Adjuster Plt	1
6	136-30-504	0	R/H Head Drum Adjuster Plt	1
7	136-30-505	0	Head Drum Scraper Mtg Brk	2
8	11-01-0130	0	Head Drum	1
9	10-02-0002	0	Wing Roller	4
10	10-03-0004	0	Return Roller (880x75mm)	1
11	10-01-0003	0	Center Roller (356x102mm)	2
12	15-01-0003	0	Head Drum Motor	1
13	19-03-0002	0	2.5" Male Coupling	1
14	19-03-0001	0	2.5" Female Coupling	1
15	13-02-4002	0	2.5" Flange Bearing	2
16	11-80-0001	0	Rosta Tensioner	2
17	21-01-1008	0	U-Bolt	6
18	21-01-3006	0	J-Bolt	4

**LISTINGS TO FIGURE : 03- 02  
( MS50 CONVEYOR HEAD UPPER SECTION )**

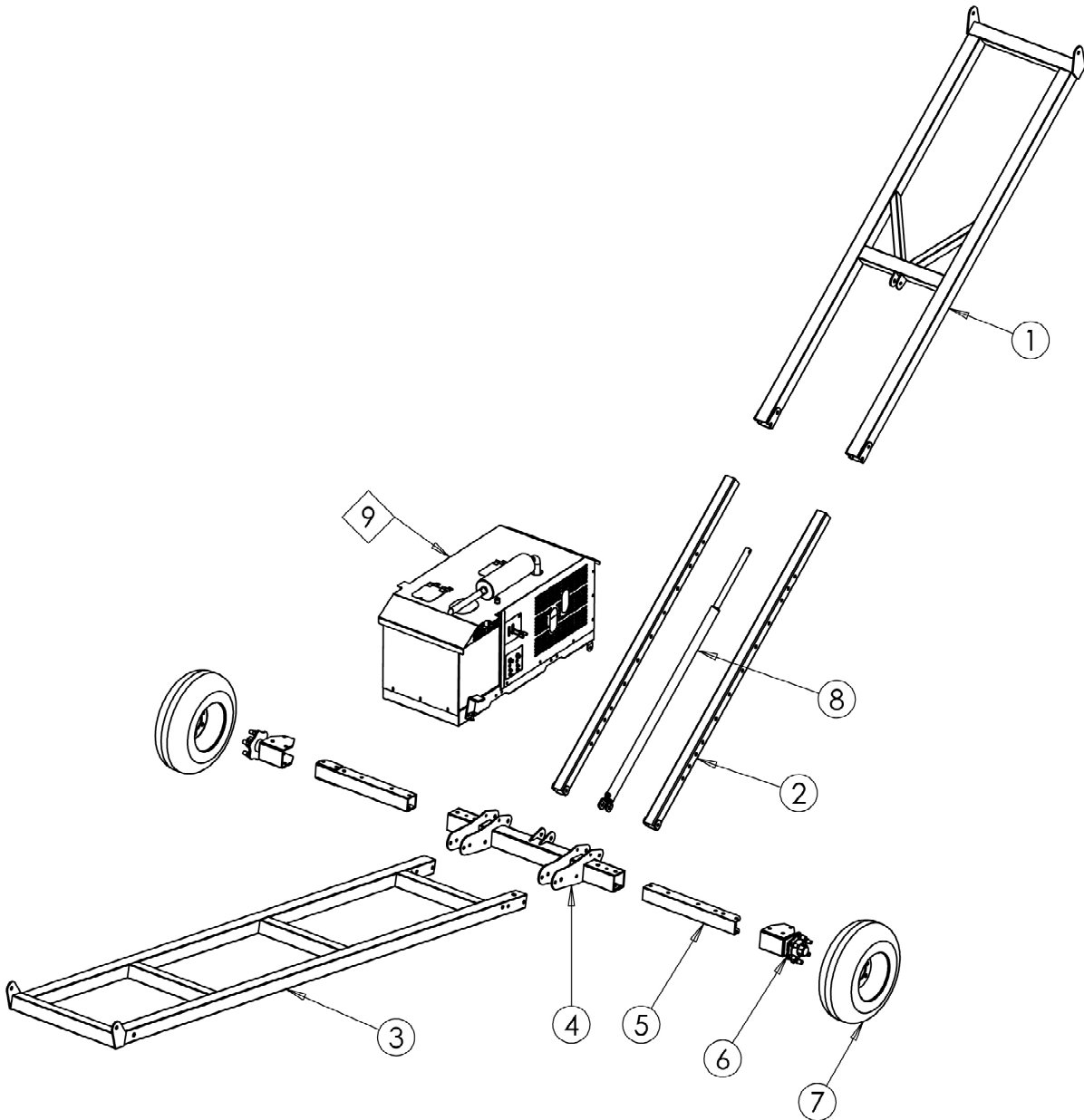
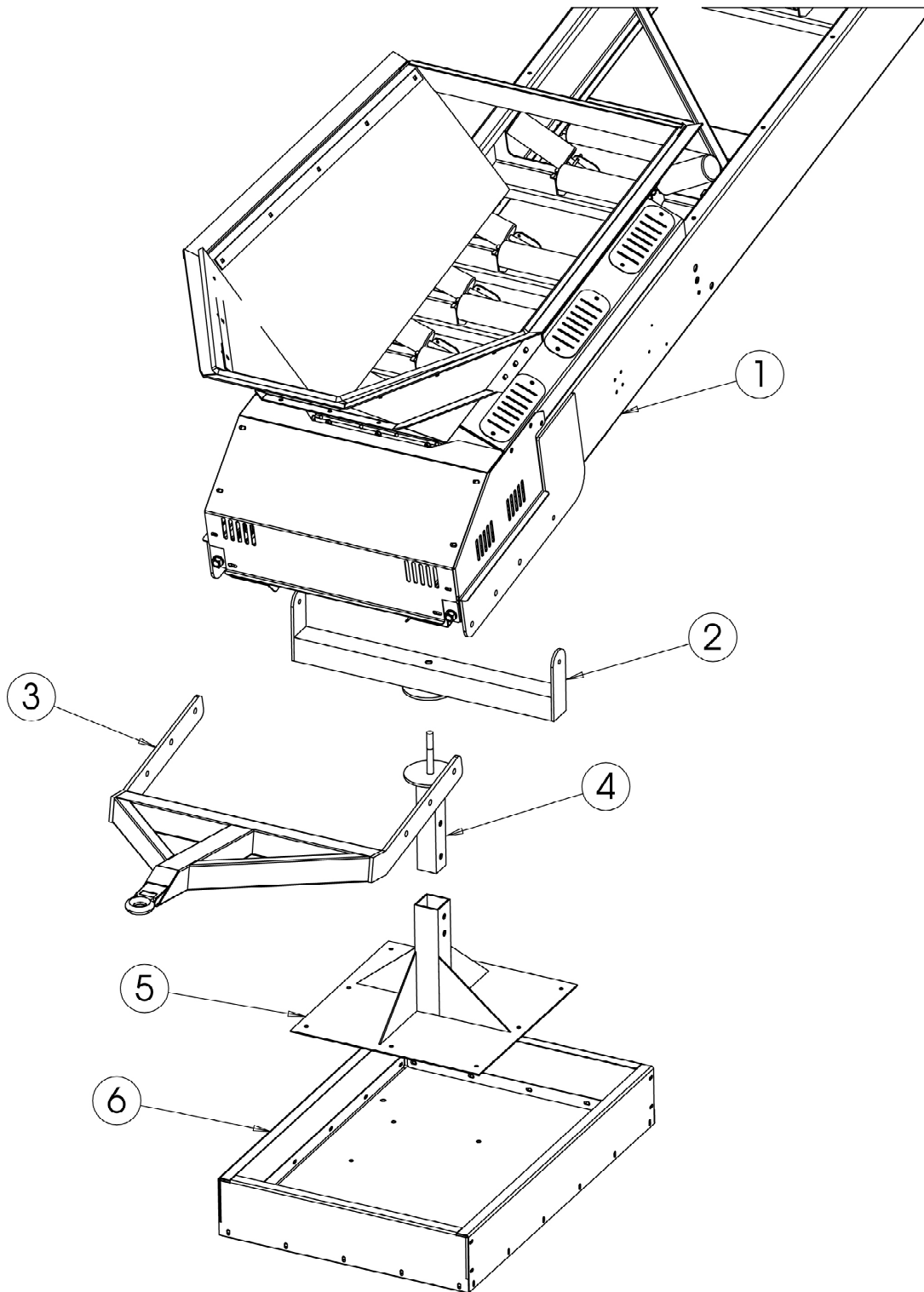


FIGURE : 03- 03  
( MS50 CONVEYOR AXLE & SUPPORTS)



<b>ITEM NO.</b>	<b>PART NO.</b>	<b>REV.</b>	<b>DESCRIPTION</b>	<b>QTY.</b>
1	136-30-701	0	Outer Box Axle Support Assembly	1
2	136-30-702	0	Inner Telescopic Box Section	2
3	136-30-700	0	Rear Axle Support Assembly	1
4	136-20-203	0	Main Axle Assembly	1
5	136-20-201	0	Inner Stub Axle Assembly	2
6	136-20-202	0	Outer Stub Axle Assembly	2
7	20-09-6120	0	Wheel Assembly	2
8	25-02-0200	0	Conveyor Ram Assembly	1
<b>Options</b>				
9	166-90-100	0	Power Pack	1

**LISTINGS TO FIGURE : 03- 03  
( MS50 CONVEYOR AXLE & SUPPORTS)**



**FIGURE : 03- 04**  
**( MS50 TOWBAR & BALLAST BOX)**

<b>ITEM NO.</b>	<b>PART NO.</b>	<b>REV.</b>	<b>DESCRIPTION</b>	<b>QTY.</b>
1	136-30-100	0	Conveyor Tail Section	1
2	136-20-102	0	Ballast Box / Conveyor Mounting Assembly	1
3	136-20-110	0	Towbar Assembly	1
4	136-20-101	0	Telescopic Box Assembly	1
5	136-20-103	0	Ballast Box Base Assembly	1
6	136-20-104	0	Ballast Box	1

**LISTINGS TO FIGURE : 03- 04  
( MS50 TOWBAR & BALLAST BOX)**

<b>ITEM NO.</b>	<b>PART NO.</b>	<b>REV.</b>	<b>DESCRIPTION</b>	<b>QTY.</b>
1	136-30-108	0	Scraper Plate	1
2	10-01-0003	0	Center Roller (356x102mm)	14
3	10-02-0002	0	Wing Roller	28
4	12-10-1303	0	Feedboot Back Rubber	1
5	10-03-0004	0	Return Roller (880x75mm)	4
6	12-10-1302	0	Rubber (90x10mm)	2
7	11-02-0130	0	Tail Drum Assembly	1
8	13-01-0002	0	2.5" Pillar Block Bearing	2
9	21-01-1008	0	U-Bolt	36
10	21-01-3006	0	J-Bolt	28
11	12-10-1305	0	Feedboot Rubber Liner	2
12	136-30-213	0	Feedboot Rubber Side Liner	1
13	25-02-0200	0	Conveyor Ram Assembly	1
14	136-30-506	0	Head Drum Scraper Assembly	1
15	11-01-0130	0	Head Drum	1
16	15-01-0003	0	Head Drum Motor	1
17	19-03-0002	0	2.5" Male Coupling	1
18	19-03-0001	0	2.5" Female Coupling	1
19	13-02-4002	0	2.5" Flange Bearing	2

**FIGURE : 03- 05**  
**( MS50 RECOMMENDED SPARES)**



**THIS PAGE HAS BEEN LEFT INTENTIONALLY BLANK FOR CHAPTER  
SEQUENCE PURPOSES.**

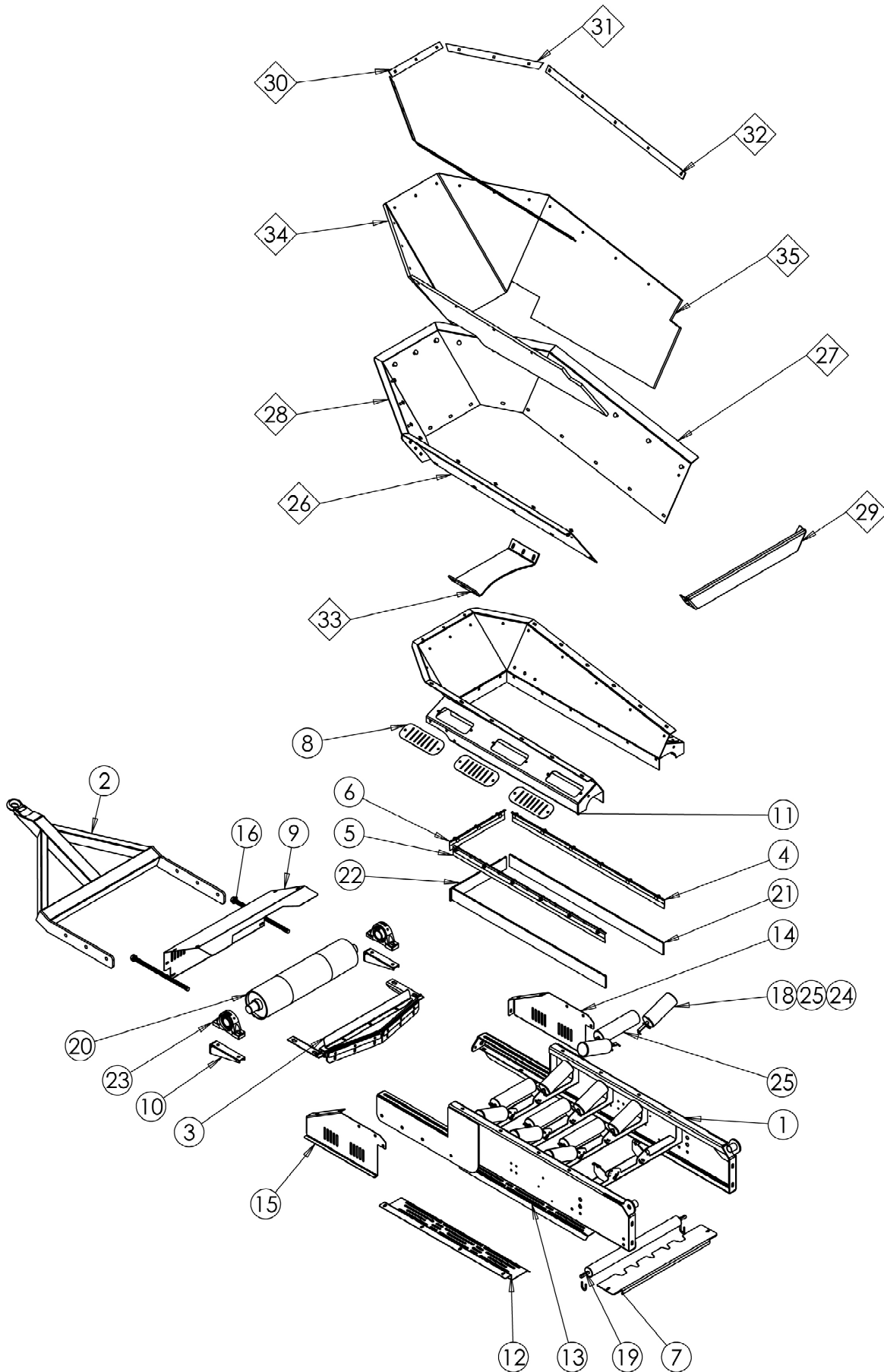


FIGURE : 04- 01  
 ( MS65 CONVEYOR TAIL SECTION )

<b>ITEM NO.</b>	<b>PART NO.</b>	<b>REV.</b>	<b>DESCRIPTION</b>	<b>QTY.</b>
1	139-30-101	0	Tail Section Welded Assembly	1
2	136-20-110	0	Towbar Assembly	1
3	136-30-103	0	Plough Scraper Assembly	1
4	136-30-201	0	Feedboot Rubber Side Clamp - RHS	1
5	136-30-202	0	Feedboot Rubber Side Clamp - LHS	1
6	136-30-203	0	Feedboot Rubber Back Clamp	1
7	136-70-001	0	Disc Return Nipguard	1
8	136-70-002	0	Feedboot Support Guard	6
9	136-70-003	0	Conveyor Rear Guard	1
10	139-30-117	0	Tail Drum Adjuster Assembly	2
11	139-30-120	0	Feedboot Assembly	1
12	139-70-102	0	Guard Bottom - LHS	1
13	139-70-103	0	Guard Bottom - RHS	1
14	139-70-104	0	Conveyor Guard - LHS	1
15	139-70-105	0	Conveyor Guard - RHS	1
16	153-30-109	0	Tail Drum Adjuster Bar	2
25	10-01-0003	0	356x102 Center Roller (Shaft: 25x20)	4
18	10-02-0002	0	Wing Roller	8
19	10-03-0004	0	880x75 Return Roller (Shaft: 75x20)	1
20	11-02-0130	0	Tail Drum Assembly	1
21	12-10-1306	0	Feedboot Side Rubber 100 x 10	2
22	12-10-1307	0	Feedboot Back Rubber	1
23	13-01-0002	0	2.5" Pillar Block Bearing	2
24	21-01-1008	0	U-Bolt	10
25	21-01-3006	0	J-Bolt	8
<b>Options</b>				
26	136-30-210	0	Feedboot Ext Side Assembly - RHS	1
27	136-30-211	0	Feedboot Ext Side Assembly - LHS	1
28	136-30-212	0	Feedboot Ext Back Assembly	1
29	136-30-213	0	Feedboot Cross Brace	1
30	136-30-214	0	Feedboot Rubber Upper Rear Clamp	1
31	136-30-215	0	Feedboot Rubber Upper Rear Clamp	2
32	136-30-216	0	Feedboot Rubber Upper Side Clamp	2
33	136-30-230	0	Rock Shelf	1
34	12-10-1304	0	Feedboot Rubber Liner	1
35	12-10-1305	0	Feedboot Rubber Side Liner	2

**LISTINGS TO FIGURE : 04- 01  
( MS65 CONVEYOR TAIL SECTION )**

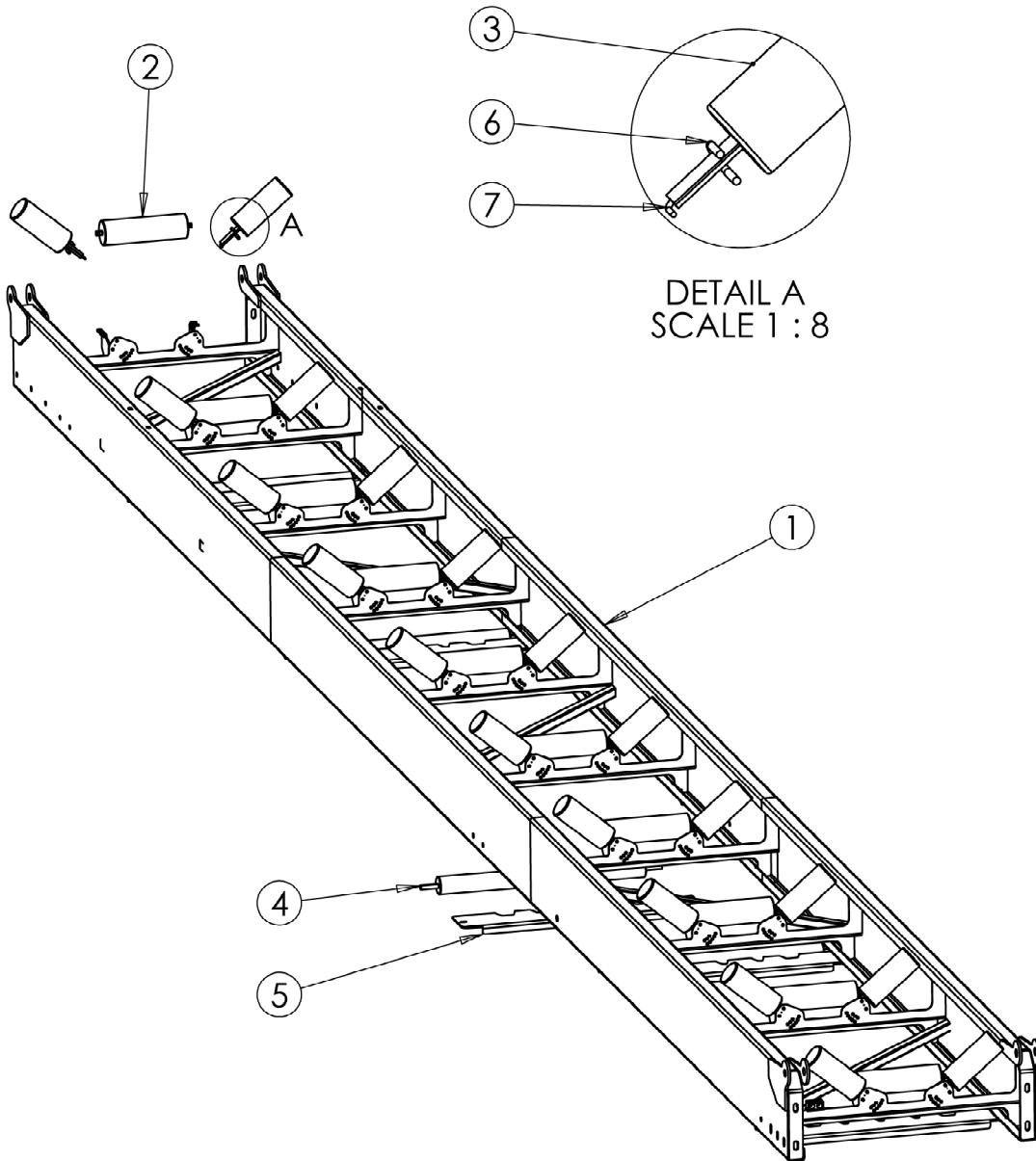


FIGURE : 04- 02  
( MS65 CONVEYOR MIDDLE SECTION )



<b>ITEM NO.</b>	<b>PART NO.</b>	<b>REV.</b>	<b>DESCRIPTION</b>	<b>QTY.</b>
1	139-30-301	0	Mid Section Welded Assembly	1
2	10-01-0003	0	356x102 Center Roller (Shaft: 25x20)	10
3	10-02-0002	0	Wing Roller	20
4	10-03-0004	0	880x75 Return Roller (Shaft: 75x20)	5
5	136-70-001	0	Disc Return Nipguard	5
6	21-01-1008	0	U-Bolt	30
7	21-01-3006	0	J-Bolt	20

**LISTINGS TO FIGURE : 04- 02**  
**( MS65 CONVEYOR MIDDLE SECTION )**

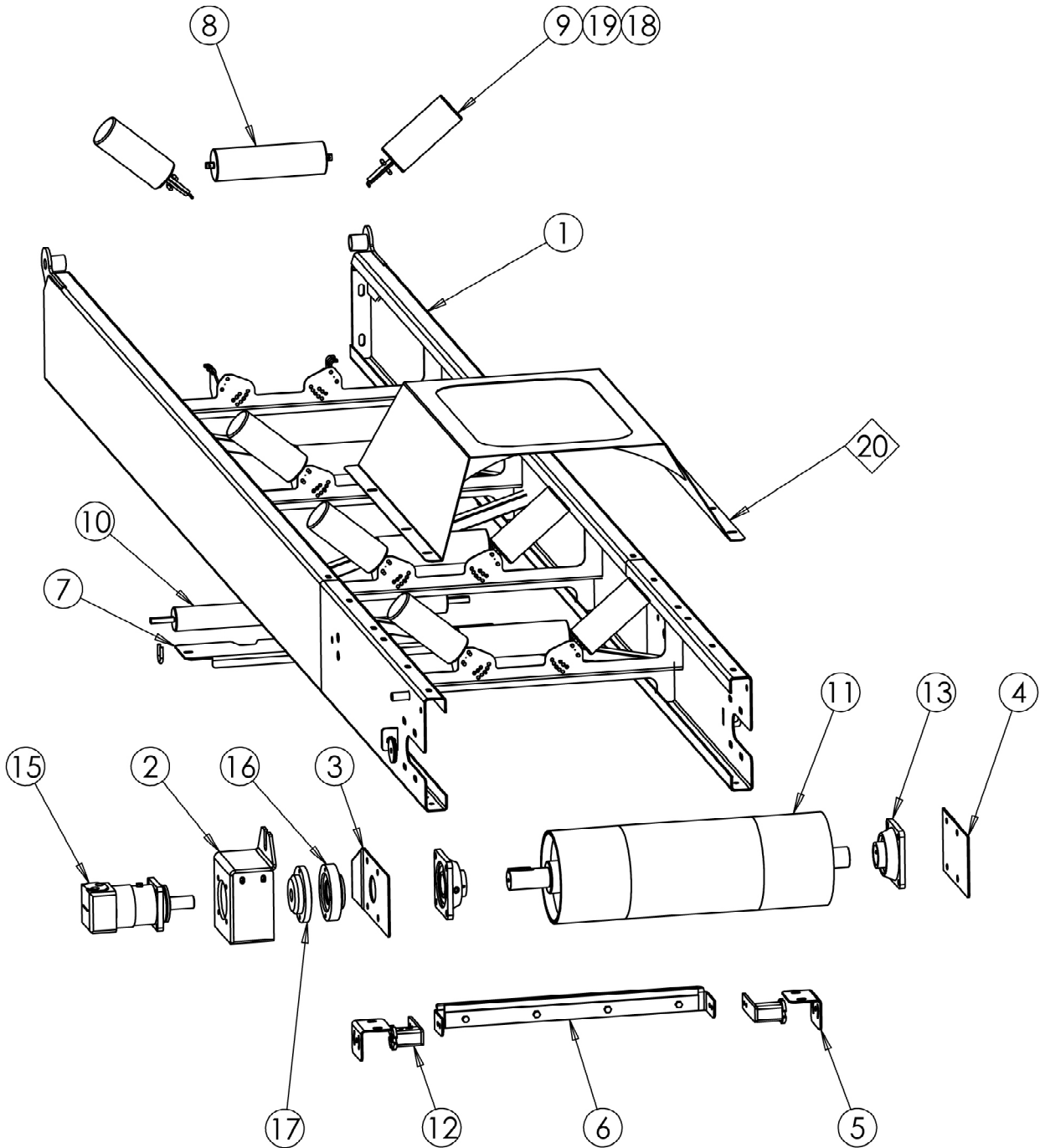


FIGURE : 04- 03  
( MS65 CONVEYOR HEAD SECTION )

<b>ITEM NO.</b>	<b>PART NO.</b>	<b>REV.</b>	<b>DESCRIPTION</b>	<b>QTY.</b>
1	139-30-501	0	Conveyor Head Section	1
2	136-30-502	0	Head Drum Motor Cover	1
3	136-30-503	0	Head Drum Adjuster Plt	1
4	136-30-504	0	Head Drum Adjuster Plt	1
5	136-30-505	0	Head Drum Scraper Mtg Brk	2
6	136-30-506	0	Head Drum Scraper Assembly	1
7	136-70-001	0	Disc Return Nipguard	1
8	10-01-0003	0	356x102 Center Roller (Shaft: 25x20)	4
9	10-02-0002	0	Wing Roller	8
10	10-03-0004	0	880x75 Return Roller (Shaft: 75x20)	1
11	11-01-0130	0	Head drum	1
12	11-80-0001	0	Rosta Tensioner	2
13	13-02-4002	0	2 1/2" Flange Bearing	2
14	14-17-0005	0	3/4" Double Clamp	4
15	15-01-0003	0	OMT500 Keyed Shaft Head Drum Motor	1
16	19-03-0001	0	HRC Coupling RM2517_F_RC_2.5in	1
17	19-03-0002	0	HRC Coupling RM2517_M_RC_2.5in	1
18	21-01-1008	0	U-Bolt	10
19	21-01-3006	0	J-Bolt	8
<b>Options</b>				
20	139-10-110	0	Head Drum Guard	1

**LISTINGS TO FIGURE : 04- 03  
( MS65 CONVEYOR HEAD SECTION )**

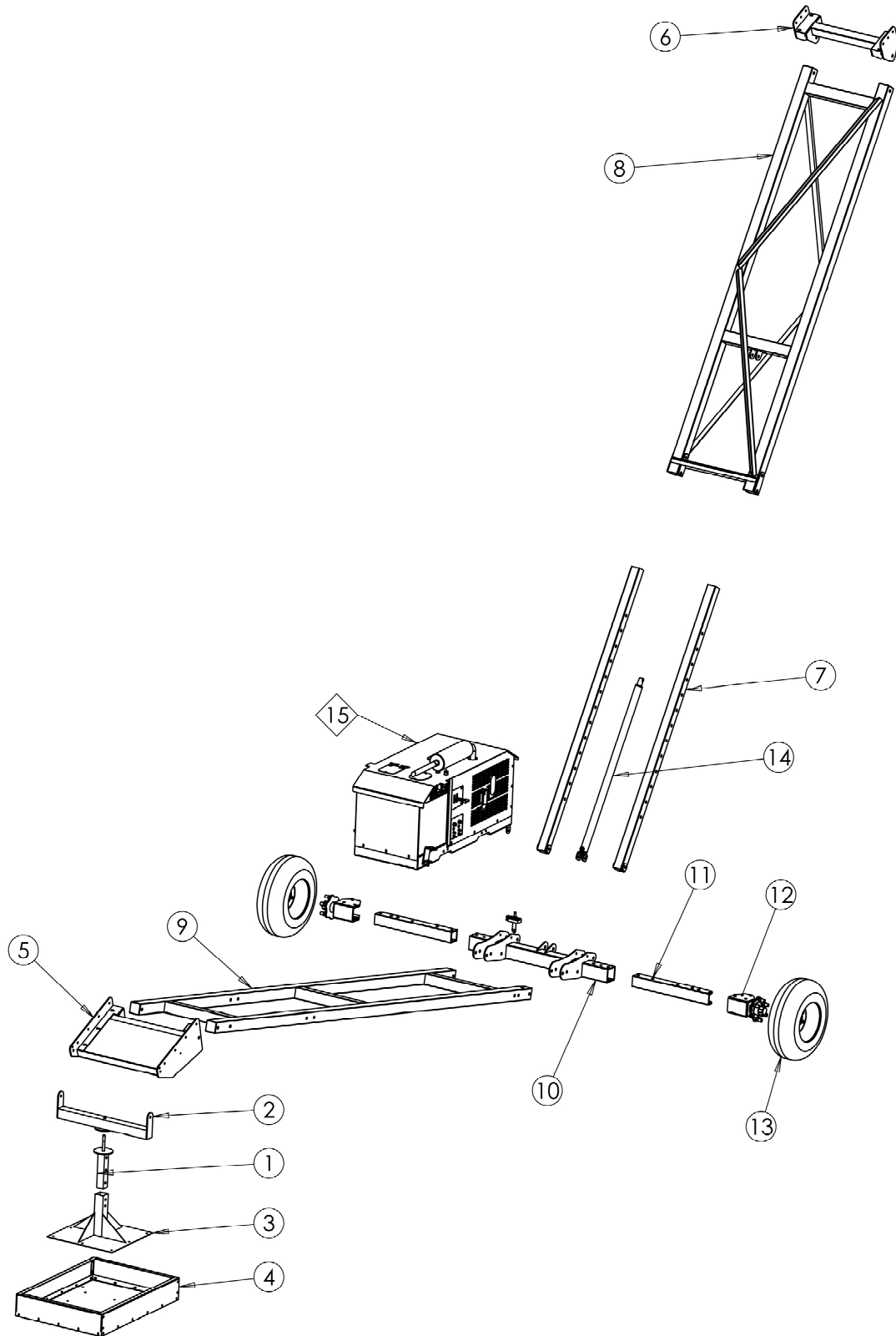


FIGURE : 04- 04  
( MS65 CONVEYOR SUPPORTS)

<b>ITEM NO.</b>	<b>PART NO.</b>	<b>REV.</b>	<b>DESCRIPTION</b>	<b>QTY.</b>
1	136-20-101	0	Telescopic Box Assembly	1
2	136-20-102	0	Ballast Box To Conveyor Mounting Assembly	1
3	136-20-103	0	Ballast Box Base Assembly	1
4	136-20-104	0	Ballast Box	1
5	139-10-120	0	Conveyor Fifth Wheel Plate Assembly	1
6	139-30-310	0	Conveyor Pivot Bracket Assembly	1
7	139-30-700	0	Inner Conveyor Support	2
8	139-30-701	0	Outer Conveyor Support	1
9	139-30-702	0	Conveyor Support Assembly	1
10	136-20-203	0	Main Axle Assembly	1
11	136-20-201	0	Inner Stub Axle Assembly	2
12	136-20-202	0	Outer Stub Axle Assembly	2
13	20-09-6120	0	Conveyor Wheel Assembly	2
14	25-02-0210	0	Hydraulic Cylinder	1
<b>Options</b>				
15	166-00-000	0	Power Pack	1

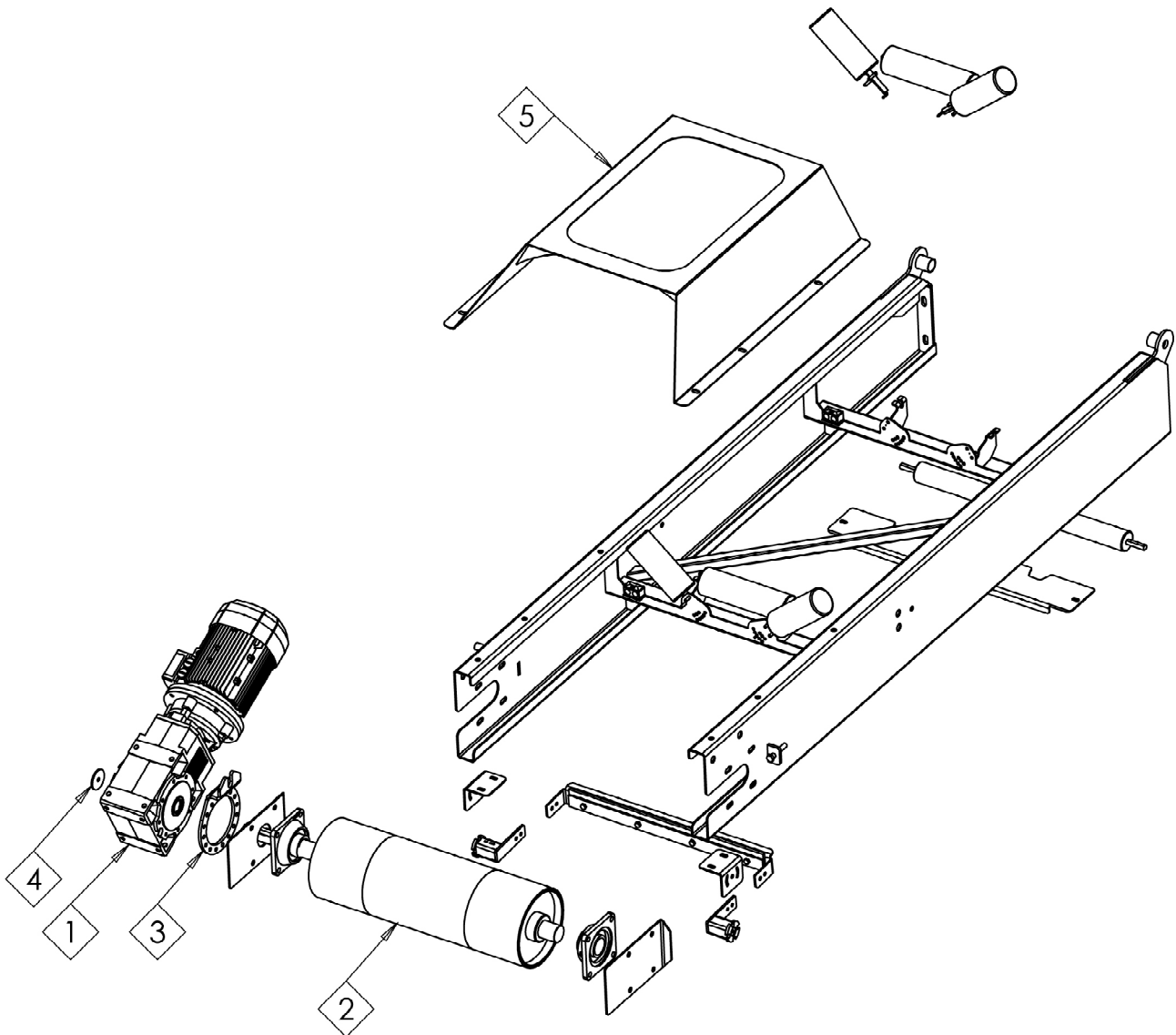
**LISTINGS TO FIGURE : 04- 04  
( MS65 CONVEYOR SUPPORTS )**

<b>ITEM NO.</b>	<b>PART NO.</b>	<b>REV.</b>	<b>DESCRIPTION</b>	<b>QTY.</b>
1	10-01-0003	0	356x102 Center Roller (Shaft: 25x20)	18
2	10-02-0002	0	Wing Roller	36
3	10-03-0004	0	880x75 Return Roller (Shaft: 75x20)	7
4	21-01-1008	0	U-Bolt	50
5	21-01-3006	0	J-Bolt	36
6	11-01-0130	0	Head Drum	1
7	13-02-4002	0	2 1/2" Flange Bearing	2
8	15-01-0003	0	Head Drum Motor	1
9	19-03-0001	0	2.5" Female Coupling	1
10	19-03-0002	0	2.5" Male Coupling	1
11	25-02-0210	0	Hydraulic Cylinder	1
12	11-02-0130	0	Tail Drum Assembly	1
13	12-10-1306	0	Feedboot Side Rubber 100 x 10	2
14	12-10-1307	0	Feedboot Back Rubber	1
15	13-01-0002	0	2.5" Pillar Block Bearing	2
16	12-10-1304	0	Feedboot Rubber Liner	1
17	12-10-1305	0	Feedboot Rubber Side Liner	2
18	136-30-506	0	Head Drum Scraper Assembly	1
19	136-30-108	0	Scraper Plate	1

**LISTINGS : 04- 05**  
**( MS65 RECOMMENDED SPARES )**



**THIS PAGE HAS BEEN LEFT INTENTIONALLY BLANK FOR CHAPTER  
SEQUENCE PURPOSES.**



**FIGURE : 05- 01**  
**( MS-SERIES CONVEYOR OPTIONS - ELECTRIC DRIVEN HEAD MOTOR)**



<b>ITEM NO.</b>	<b>PART NO.</b>	<b>REV.</b>	<b>DESCRIPTION</b>	<b>QTY.</b>
1	15-01-0006	0	7.5kW Drive Motor	1
2	11-01-0140	0	Head drum	1
3	136-30-510	0	Gearbox Mounting Bracket	1
4	19-03-0003	0	Coupling Washer 2.5in	1
5	139-10-110	0	Head Drum Guard	1

**LISTINGS TO FIGURE : 05- 01**  
**( MS-SERIES CONVEYOR OPTIONS - ELECTRIC DRIVEN HEAD MOTOR)**

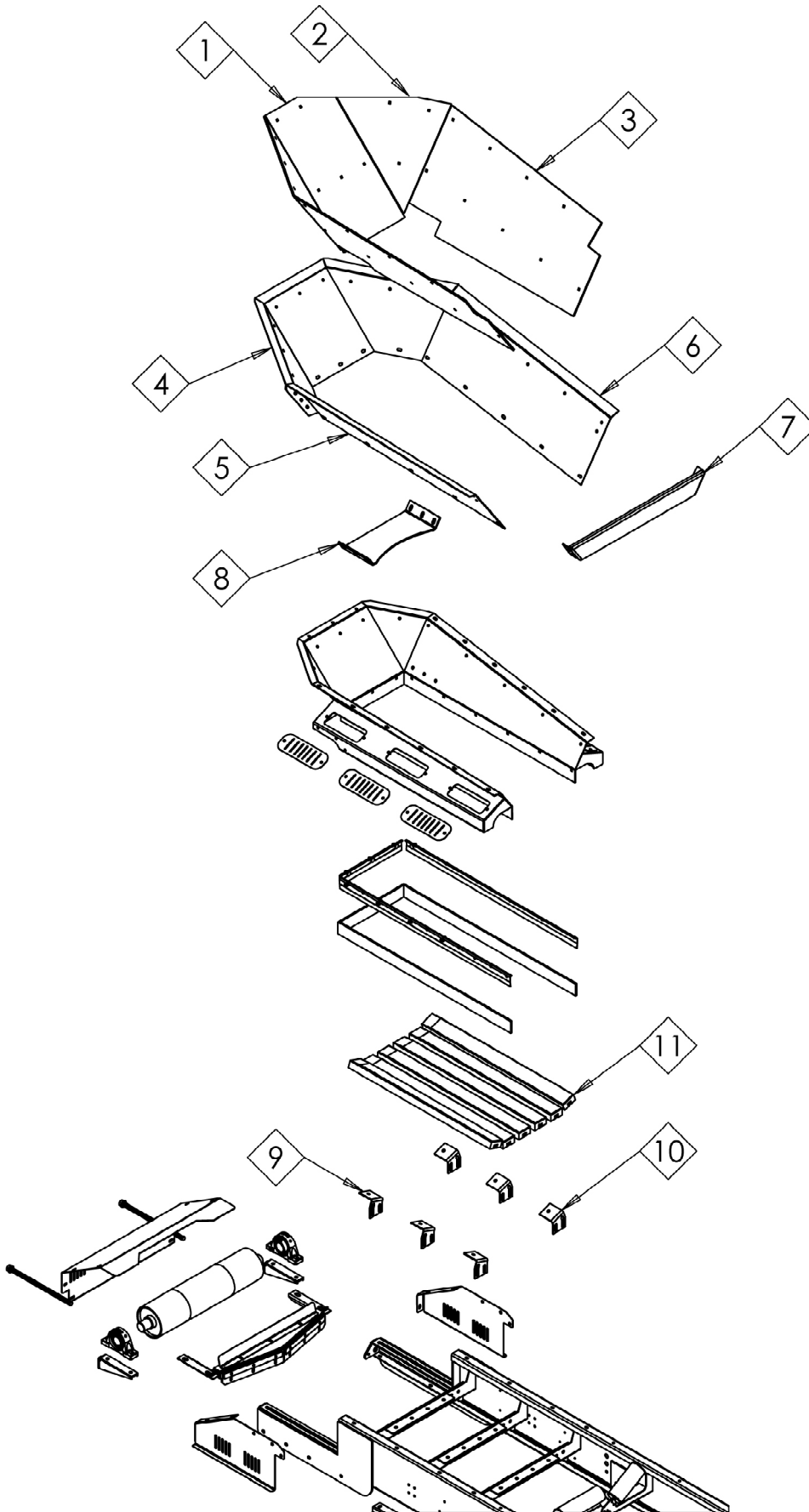


FIGURE : 05- 02  
( MS-SERIES CONVEYOR OPTIONS -IMPACT BARS)

<b>ITEM NO.</b>	<b>PART NO.</b>	<b>REV.</b>	<b>DESCRIPTION</b>	<b>QTY.</b>
1	149-30-103	0	Feedboot Back Wear Plate	1
2	149-30-102	0	Feedboot Corner Wear Plate	2
3	149-30-101	0	Feedboot Side Wear Plate	2
4	136-30-212	0	Feedboot Ext Back Assembly	1
5	136-30-210	0	Feedboot Ext Side Assembly - RHS	1
6	136-30-211	0	Feedboot Ext Side Assembly - LHS	1
7	136-30-213	0	Feedboot Cross Brace	1
8	136-30-230	0	Rock Shelf	1
9	153-30-102	0	R/H Impact Bed Bracket	3
10	153-30-103	0	L/H Impact Bed Bracket	3
11	18-01-1240	0	Impact Bed Runner	6

**LISTINGS TO FIGURE : 05- 02**  
**( MS-SERIES CONVEYOR OPTIONS - IMPACT BARS)**

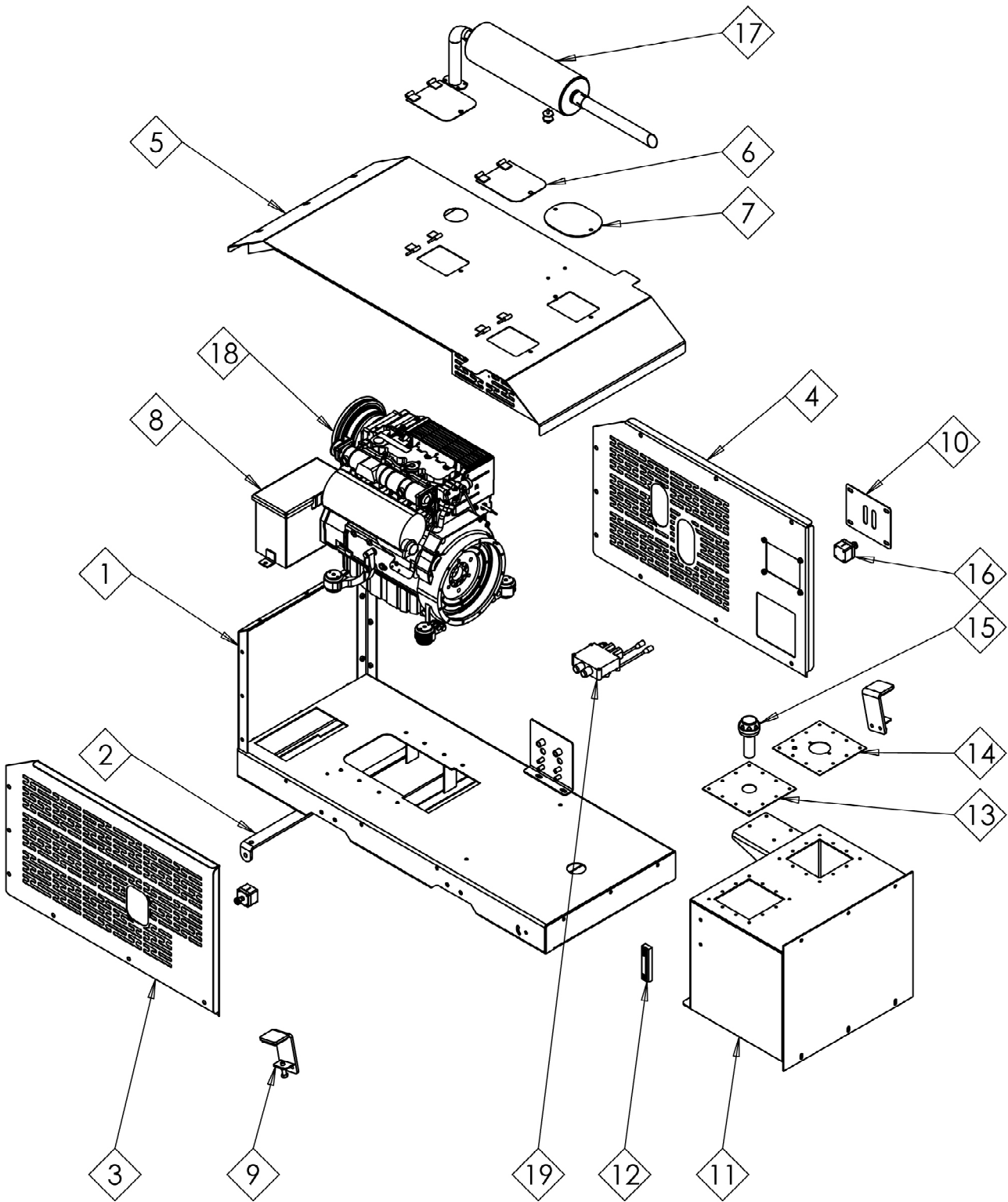


FIGURE : 05 - 03  
( MS-SERIES CONVEYOR OPTIONS - POWERPACK)

<b>ITEM NO.</b>	<b>PART NO.</b>	<b>REV.</b>	<b>DESCRIPTION</b>	<b>QTY.</b>
1	166-90-101	0	Engine Tray	1
2	166-90-108	0	Bracket	1
3	166-90-104	0	Side Guard	1
4	166-90-105	0	Side Guard	1
5	166-90-103	0	Power Unit Canopy	1
6	166-90-106	0	Hinged Flap	2
7	166-90-103-04	0	Bolt on Door	1
8	153-90-111	0	Battery Box	1
9	166-90-109	0	Clamp	2
10	166-90-105-02	0	Spool Valve Plate	1
11	166-90-102	0	Hydraulic Tank	1
12	14-01-3001	0	Level Gauge	1
13	153-90-132	0	Hyd filler cap mounting Plate	1
14	166-90-102-05	0	Filter Mounting Bracket	1
15	14-01-5002	0	Filler Cap Assembly	1
16	23-01-0003	0	Emergency Stop Keyed Type	2
17	16-05-1600	0	Powerpack Exhaust Assembly	1
18	16-01-1004	0	34Hp Engine	1
19	14-04-0009	0	2 Bank Spool	1

**LISTINGS TO FIGURE : 05 - 03  
( MS-SERIES CONVEYOR OPTIONS - POWERPACK)**



**THIS PAGE HAS BEEN LEFT INTENTIONALLY BLANK FOR CHAPTER  
SEQUENCE PURPOSES.**