

THIS AERIAL DEVICE IS NON-INSULATING. IT PROVIDES NO ELECTRICAL PROTECTION. CONTACT WITH OR INADEQUATE CLEARANCE TO AN ENERGIZED LINE OR APPARATUS IS AN ELECTROCUTION HAZARD.

Elliott Equipment Company reserves the right to change the specification of any unit at any time without prior notice. This brochure is only a statement of general specifications on the date of this publication. For more detailed info on specific HiReach trucks go to www.elliottequip.com

Notes:

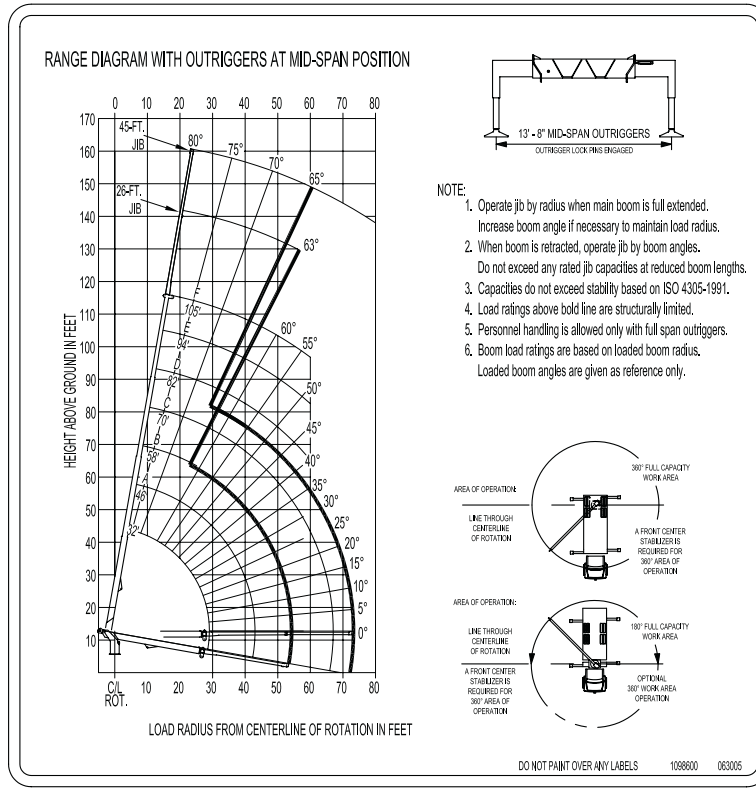
Notes:

MAIN BOOM LOAD RATINGS WITH OUTRIGGERS AT MID-SPAN POSITION											JIB LOAD RATINGS										
MAIN BOOM LOAD RATINGS											JIB LOAD RATINGS										
LOAD RATINGS IN LBS WITH OUTRIGGERS AND STABILIZERS EXTENDED											LOAD RATINGS IN LBS WITH OUTRIGGERS AND STABILIZERS EXTENDED										
LOAD RADIUS IN FEET	LOADED BOOM ANGLE	31-ft	LOADED BOOM ANGLE	A	LOADED BOOM ANGLE	B	LOADED BOOM ANGLE	C	LOADED BOOM ANGLE	D	LOADED BOOM ANGLE	E	LOADED BOOM ANGLE	F	24-FT. EXTENDABLE JIB	LOADED BOOM ANGLE	24-FT. JIB	LOADED BOOM ANGLE	24-FT. JIB	LOADED BOOM ANGLE	45-FT. JIB
5	80	56,000																			
6	79	44,000																			
8	75	36,800	80	30,000																	
10	71	31,000	77.5	27,000																	
12	66.5	26,500	75	24,900	79	22,500															
14	62.5	20,500	72.5	21,800	76.5	19,800	79.5	18,500													
16	58	18,500	69.5	19,500	74.5	17,700	78	16,000	80	14,300											
18	53	14,000	66.5	15,800	72.5	16,000	76	14,800	79	13,700											
20	48	11,000	63.5	12,800	70.5	13,300	74.5	13,400	77.5	12,500	79.5	11,500									
25	34	7,300	56.5	8,050	65	8,200	70	8,650	73.5	8,700	76.5	8,900	78.5	8,400							
30			48	5,750	59	5,950	65.5	6,050	69.5	6,100	73	6,300	75	6,400							
35			38	3,800	52.5	4,150	60.5	4,250	65.5	4,300	69.5	4,500	72	4,600							
40			24.5	2,600	45.5	2,950	55	3,000	61.5	3,100	66	3,200	69	3,300							
45					37.5	2,000	49.5	2,100	57	2,150	62	2,300	65.5	2,400							
50					27	1,250	43.5	1,400	52.5	1,450	58.5	1,550	62.5	1,700							
55							37	800	47.5	900	54.5	1,000	59	1,050							
60									42.5	500	50.5	550	55.5	550							
0	4,650	0	1,100	0	800																
ADD TO CAPACITIES WHEN JIB STOWED IN											ADD WHEN REMOVING TWO SECTION JIB (lbs)										
											ADD WHEN REMOVING ONE SECTION JIB (lbs)										

1-PART LINE	2-PART LINE	3-PART LINE	4-PART LINE	5-PART LINE	6-PART LINE	7-PART LINE	NOTICE
							- DO NOT DEACHEAD LINE BLOCK AGAINST BOOM TIP WHEN EXTENDING BOOM. - KEEP AT LEAST 5 WRAPS OF LOADLINE ON THE WINCH DRUM AT ALL TIMES. - USE ONLY 5/8" DIAMETER WIRE ROPE, AS SPECIFIED BELOW, WITH THE PROPER BREAKING STRENGTHS LISTED. - ANTI-TWO-BLOCK SYSTEM MUST BE ENGAGED OPERATING CONDITION BEFORE OPERATING CRANE. SEE OPERATION & SAFETY MANUAL. 5/8" - 11.3 KN (2550 LBS) MINIMUM BREAKING STRENGTH 5/8" - 11.3 KN (2550 LBS) MINIMUM BREAKING STRENGTH
MAX PULL: 9,600 lbs	19,200 lbs	28,800 lbs	38,400 lbs	48,000 lbs	57,600 lbs	64,000 lbs	
MAX PULL: 9,090 lbs	18,120 lbs	27,180 lbs	36,240 lbs	45,300 lbs	54,360 lbs	64,000 lbs	

CRANE MEETS ASME B30.1 REQUIREMENTS AT TIME OF MANUFACTURE

DO NOT PAINT OVER ANY LABELS 1098600 063005



THIS AERIAL DEVICE IS NON-INSULATING. IT PROVIDES NO ELECTRICAL PROTECTION. CONTACT WITH OR INADEQUATE CLEARANCE TO AN ENERGIZED LINE OR APPARATUS IS AN ELECTROCUTION HAZARD.

Elliott Equipment Company reserves the right to change the specification of any unit at any time without prior notice. This brochure is only a statement of general specifications on the date of this publication. For more detailed info on specific HiReach trucks go to www.elliottequip.com