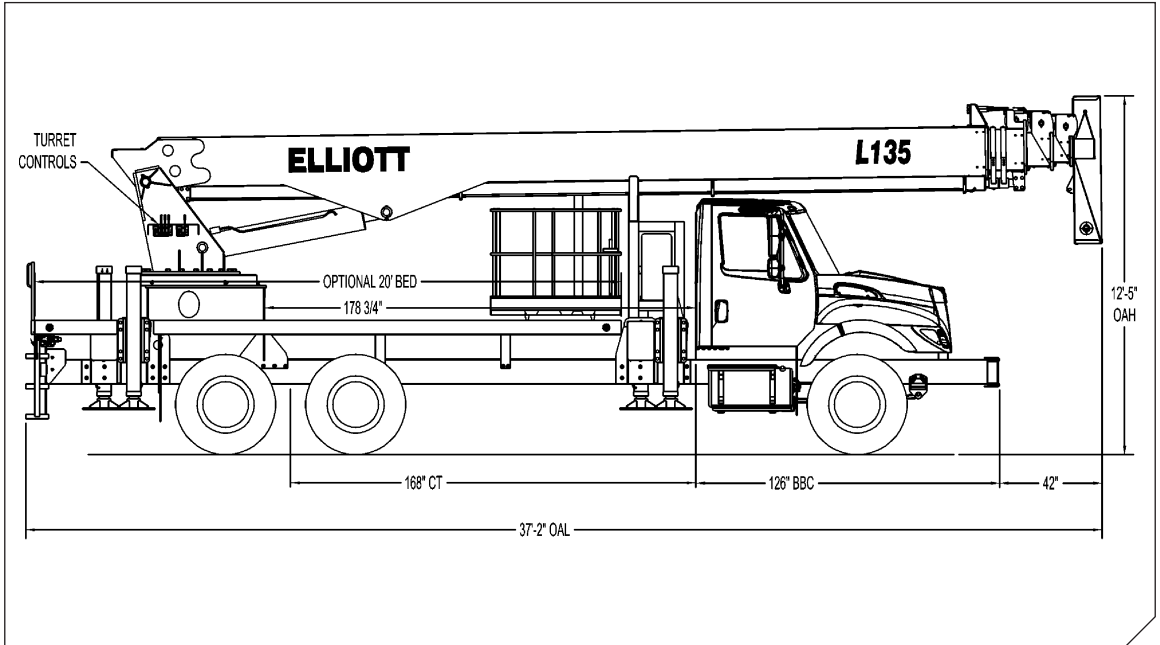


HiReach™ ECL-5-135



General Unit Description

HiReach – The machine that launched an industry, the wide-ranging Elliott HiReach telescoping aerial workplatforms and cranes allow you to do more with just a single machine. From material handling and digging to basic crane and boom, the HiReach does the work of a fleet of trucks. Available with heights ranging from 35 feet to 158 feet, the HiReach comes fully equipped with standard features that are sold as options by our competition. Our extension cylinder arrangement gives you the smoothest, most precise ride in the industry. What's more, all of Elliott's products can be customized to create tailor-made machines that include special platform features, pressure washers, body and tool box packages and more.

Basic unit includes base assembly supporting rear mounted rotating turret, hydraulically powered continuous rotation mechanism, oil reservoir, oil, and manual hydraulic controls mounted to turret. Radio proportional remote controls for platform. Base mounted "T3" type hydraulically powered, individually controlled main outriggers at rear and secondary outriggers behind cab. High strength steel five section hydraulic and cable telescoping boom with one double acting 9" lift cylinder. Gravity leveling and manually rotating 36" x 54" work platform with hand brake. Power take off and pump drive, pressure gauge, pump and holding valves on all cylinders. Remote start/stop at radio and lower controls, 12-volt emergency pump with switch at radio and lower controls, PTO hour meter, backup alarm, fire extinguisher, and two body harnesses and lanyards. Paint Hi-Reach white, outriggers red and bed and boxes black. Installed on chassis, tested and ready to operate. Unit certified to ANSI A92.2 for Vehicle-Mounted Elevating and Rotating Aerial Devices. Platform capacity 500 Lbs.

HiReach™ ECL-5-135

Technical Specifications

Minimum Platform Height: 132' ground to platform floor.

Working Range: 137' max. height and 89' max. side reach.

Work Platform: Gravity leveling and manually rotating 36" x 54" work platform with 40" high rails. Equipped with two safety lanyard attachment loops and two safety harnesses and 72" lanyards. Platform capacity 500 lbs.

Platform Leveling System: Gravity leveling with hand brake.

Radio Controls: Radio controllers meter pilot-operated, pressure-compensated modulating valves. Remote controls for boom operations mounted on the turret. Hi/Lo range, start/stop and engine speed toggle controls are also at the remote control.

Lower Controls: Remote controls mounted on curbside of turret.

Outrigger Controls: Parallel open-center stack valve for lever-operated control of right and left outriggers. The outrigger valves are mounted at the rear, under each corner of the bed with roadside valve controlling roadside outriggers and curbside valve controlling curbside outriggers.

Outriggers: "T3" out-and-down main rear outriggers and secondary outriggers behind cab with 22 ft. spread.

Frame: One piece, all welded, box-type fabrication with integral outrigger mounts. Bolt-on torque frame distributes load to front of truck.

Turret: Reverse offset turret is one-piece weldment. Turret rotates on large diameter ball bearing.

Rotation: Continuous turret rotation with no stops. Hydraulic motor drives turret through self-locking gear box.

Boom: High Strength steel plated rectangular tube sections. Assembly includes heavy-duty cylinder fittings, pivot pins, and replaceable wear pads.

Boom Extension: 5" external cylinder with 3" rod extends the largest telescopic boom section. The top, next-to-top, and middle boom sections extend with EEIP wire rope. Boom equipped with proximity switches to automatically control operating range.

Lift: One double-acting 9" full displacement, long stroke cylinders provide smooth and stable boom elevation. Holding valve prevent boom from falling in event of hose failure.

Cylinders: All cylinders use microhoned cylinder tubing, chrome shafts, top grade packing and protective rod wipers. Cylinder-mounted holding valves provided on all load-holding cylinders.

Hoses: All high pressure hose is wire braid reinforced with a minimum safety factor of 4 to 1.

Oil Tank Capacity: 70 gallon integrally mounted with boom stand.

Hydraulic System: Operating pressure approximately 3,500 PSI. System is parallel open center type and is equipped with liquid-filled pressure gauge. Oil is supplied to upper cylinders through hydraulic union in center of turret.

Pump: Gear type, direct mount to truck PTO. 20 GPM @ 3,500 PSI on high engine speed.

PTO: Heavy-duty, high-speed. Cable engaged from cab.

Cab Equipment: PTO cable with indicator lights installed in truck cab. Engine speed control and start/stop installed with control switches in platform remote control box and also located at lower controls. U/L approved 5-BC dry chemical fire extinguisher installed in truck cab.

Operators Manual & Video: Two copies of operation, maintenance, safety and parts manual provided with each unit. Operational and safety video provided at delivery.

Installation: Unit installed on customer's truck, painted, system and tank filled with oil, tested, inspected, certified and ready to operate.

Standard Paint: Paint Hi-Reach white, outriggers red, and bed and boxes black. Top of bed painted with black nonskid surface.

Bumper: Bureau of Motor Carrier Safety rear bumper.

Weight: Approximately 31,000 lbs. with 20' steel-floor bed less truck.

Truck Chassis Requirements: Approx. 168" C.T. RBM 3,200,000 in.-lb. per rail, 18,000 lb. front axle, minimum 34,000 lb. tandem, and 52,000 lb. GVWR required. Trucks must have extended front bumper, extended rear frame, increased cooling, heavy-duty front and rear springs, 12V electrical system with high capacity alternator, cab clearance stop/tail/backup lights, and I.D. lamps. Additional equipment to consider: front tow hook, pintle hook, mud and snow tires for off highway use. Recommended GVWR is minimum for HI-REACH with flatbed only. Contact factory when additional equipment is to be added.

Options

Bed: Length 20' (other lengths available) Width 98" with 3/16" steel tread plate floor, 6" rub rail and heavy duty cross members. Stake pockets on both sides of bed. Spray suppressant splash guard installed. Chassis stop/turn/back-up lights remounted as necessary. Rear clearance and side market lights with reflectors on bed.

Heavy-Duty Hydraulic Winch: Mounted at the base of the boom for a long fleet angle and flat level spooling of cable. Option includes separate PTO, pump and valve for winch. Heavy-duty two-speed winch supplied with 400 ft. of 1/2" diameter 6x37 EIPS IWRC wire rope and swivel hook. Radio anti-2-block switch, 3-part hook, horn, load indicator system with digital display and certification to ANSI B 30.5 mobile cranes provided.

110V Lines to Platform

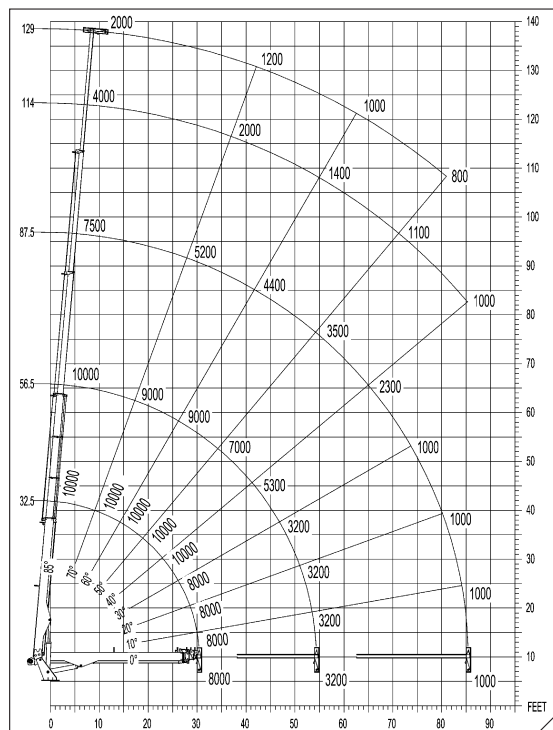
Welder Generators

Wood-Floor Bed

Line Bodies

Tool Storage

Miscellaneous Options...Contact factory for details



THIS AERIAL DEVICE IS NON-INSULATING. IT PROVIDES NO ELECTRICAL PROTECTION. CONTACT WITH OR INADEQUATE CLEARANCE TO AN ENERGIZED LINE OR APPARATUS IS AN ELECTROCUTION HAZARD.

ELLIOTT
EQUIPMENT COMPANY

4427 South 76th Circle

Omaha, NE 68127

Phone: 402-592-4500

Fax: 402-592-4553

Email: info@elliottequip.com

www.elliottequip.com