

# ETA 29/33/37

## FULL HYDRAULIC ARTICULATING NON-INSULATED



### CUSTOMIZED SOLUTION

When versatility is a priority, this articulating aerial model is a winning solution that can be customized to a 34', 38' or 42' working height. With each working height, the ETA model aerial has continuous rotation, full pressure hydraulic controls, and a positive chain and rod leveling system as standard components. Options such as emergency hydraulic power, single handle controls, oversized bucket or non-insulated upper boom are among some of the ways to customize this unit to suit your particular needs.

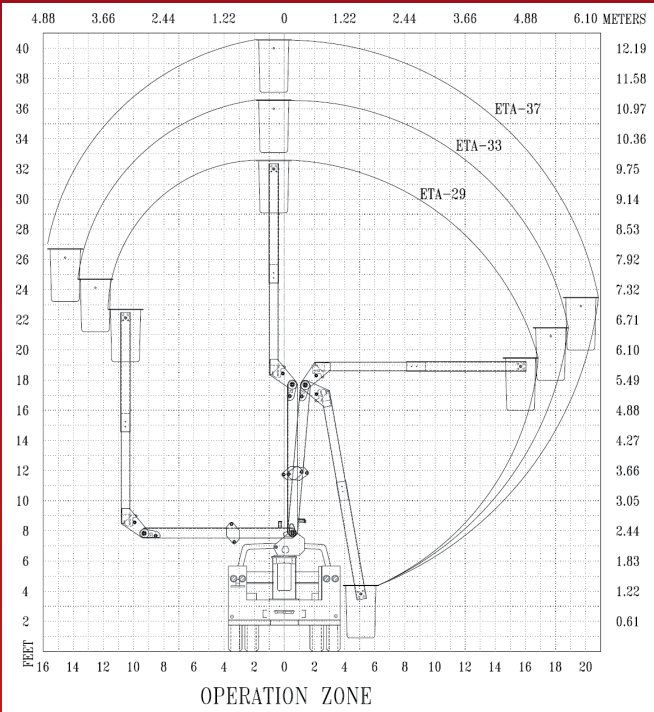


Courtesy of Crane.Market

DEPEND ON IT.



## ETA 29/33/37



**EQUIPMENT TECHNOLOGY LLC  
IS A FULL SERVICE SOLUTION  
PROVIDER OF THE HIGHEST  
QUALITY DESIGN,  
MANUFACTURING, AND POST  
SALE SERVICE.**

### EQUIPMENT TECHNOLOGY LLC

341 NW 122nd  
Oklahoma City, OK 73114  
Toll-Free: 1-888-748-3841 • Fax: 1-405-755-6829  
[etiequipment.com](http://etiequipment.com)

## GENERAL SPECIFICATIONS\*

|                                | ETA 29         | ETA 33         | ETA 37         |
|--------------------------------|----------------|----------------|----------------|
| Height to bottom of bucket*..  | 29 ft. - 0 in. | 33 ft. - 0 in. | 37 ft. - 0 in. |
| Working height .....           | 34 ft. - 0 in. | 38 ft. - 0 in. | 42 ft. - 0 in. |
| Side reach .....               | 17 ft. - 6 in. | 19 ft. - 6 in. | 21 ft. - 6 in. |
| Stow height* .....             | 9 ft. - 9 in.  | 9 ft. - 9 in.  | 9 ft. - 9 in.  |
| Rated bucket capacity .....    | 350 lbs.       | 350 lbs.       | 350 lbs.       |
| Operating pressure (min) ..... | 2,000 psi.     | 2,000 psi.     | 2,000 psi.     |
| Operating volume .....         | 4 gpm          | 4 gpm          | 4.25 gpm       |

## MINIMUM VEHICLE SPECIFICATIONS

|                              | ETA 29      | ETA 33      | ETA 37      |
|------------------------------|-------------|-------------|-------------|
| GVWR (dual rear wheels)..... | 11,000 lbs. | 11,000 lbs. | 15,000 lbs. |
| GAWR (front) .....           | 4,100 lbs.  | 4,100 lbs.  | 5,000 lbs.  |
| GAWR (rear) .....            | 8,250 lbs.  | 8,250 lbs.  | 11,000 lbs. |
| C.A. ....                    | 60 in.      | 60 in.      | 60 in.      |

## STANDARD FEATURES

- Continuous rotation is standard on all ETA units.
- Full pressure hydraulic controls located at basket and turret with full feathering capabilities from both upper and lower controls.
- Positive chain and rod leveling based on parallelogram system ensuring long life and minimum leveling system maintenance.
- Shear ball rotation gear driven by internal drive gear box. The gear box has an extended shaft for manual rotation.
- Internally mounted holding valves (integral part of cylinder) lock cylinders in place in the event of hydraulic failure.
- All pins turn on replaceable bushings.
- Ability to access body compartments from basket.

## OPTIONS

- Emergency hydraulic power (12 volt DC)
- Engine start/stop system
- Hydraulic tool circuit
- Two speed throttle system
- Bucket tilt/rescue
- Single handle control
- One foot riser
- 69 KV rating - category B
- Bucket liner
- Bucket cover
- Lower boom insert (ETA 37 only)
- Non-insulated upper boom
- Electric tool circuit (non-insulated units)
- Air line to bucket
- Oversize bucket (24"x 30"x 42")
- Foul weather bucket/splicer bucket (non-insulated units)



Specifications are subject to change without notice

Note (\*): All specifications are based on 40" frame height  
Courtesy of CraneMarket