

ETO 30/33/37

ARTICULATING OVER-CENTER INSULATED



CUSTOMIZED SOLUTION

As part of the insulated product line, this versatile ETO model comes with working heights from 35 feet to 42 feet in an articulating, over-center aerial. The ETO 30/33/37 offers continuous rotation, full pressure hydraulic controls, and a positive chain and rod leveling system as standard on its units. A welcome safety feature is also standard and includes internally mounted holding valves that lock cylinders in place in the event of a hydraulic failure. This model unit comes with a multitude of optional features including emergency hydraulic power, bucket tilt/rescue, a hydraulic tool circuit and more offering the end-user a host of solutions for their need.

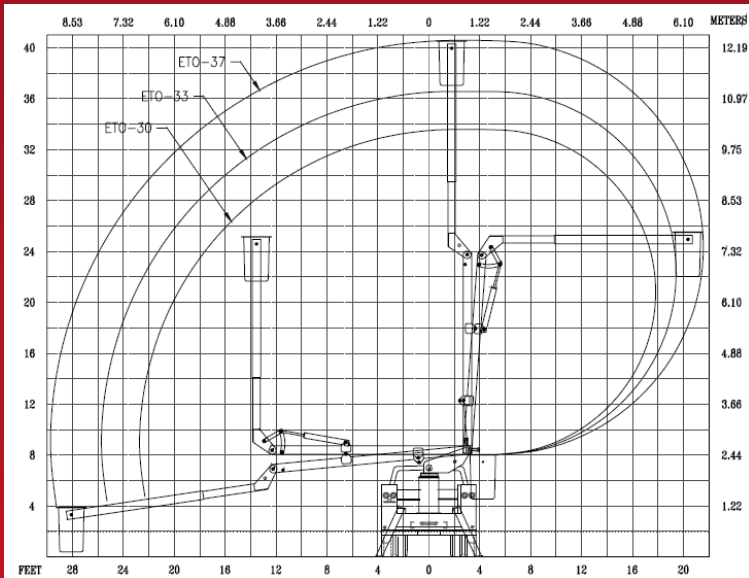


Courtesy of Crane.Market

DEPEND ON IT.™



ETO 30/33/37



**EQUIPMENT TECHNOLOGY LLC
IS A FULL SERVICE SOLUTION
PROVIDER OF THE HIGHEST
QUALITY DESIGN,
MANUFACTURING, AND POST
SALE SERVICE.**

EQUIPMENT TECHNOLOGY LLC

341 NW 122nd
Oklahoma City, OK 73114
Toll-Free: 1-888-748-3841 • Fax: 1-405-755-6829
etiequipment.com

GENERAL SPECIFICATIONS*

	ETO 30	ETO 33	ETO 37
Height to bottom of bucket*..	30 ft. - 0 in.	33 ft. - 0 in.	37 ft. - 0 in.
Working height	35 ft. - 0 in.	38 ft. - 0 in.	42 ft. - 0 in.
Side reach	22 ft. - 6 in.	25 ft. - 6 in.	29 ft. - 6 in.
Stow height*	9 ft. - 9 in.	9 ft. - 9 in.	9 ft. - 9 in.
Rated bucket capacity	350 lbs.	350 lbs.	350 lbs.
Operating pressure (min)	2,000 psi.	2,000 psi.	2,000 psi.
Operating volume	3.5 gpm	3.5 gpm	4 gpm

MINIMUM VEHICLE SPECIFICATIONS

	ETO 30	ETO 33	ETO 37
GVWR (dual rear wheels).....	11,000 lbs.	15,000 lbs.	15,000 lbs.
GAWR (front)	4,000 lbs.	5,000 lbs.	5,000 lbs.
GAWR (rear).....	8,250 lbs.	11,000 lbs.	11,000 lbs.
C.A.	60 in.	60 in.	60 in.

STANDARD FEATURES

- Continuous rotation is standard on all ETO units.
- Full pressure hydraulic controls located at basket and turret with full feathering capabilities from both upper and lower controls.
- Positive chain and rod leveling based on parallelogram system ensuring long life and minimum leveling system maintenance.
- Shear ball rotation with an extended shaft for manual rotation.
- Internally mounted holding valves (integral part of cylinder) lock cylinders in place in the event of hydraulic failure.
- All pins turn on replaceable bushings.

OPTIONS

- Emergency hydraulic power (12 volt DC)
- Engine start/stop system
- Hydraulic tool circuit
- Two speed throttle
- Bucket tilt/rescue
- Single handle control
- 69 KV rating - Category B
- Bucket liner
- Bucket cover
- Lower boom insert (ETO 33/37 only)
- Air line to bucket
- Oversize bucket (24"x30"x42")



Specifications are subject to change without notice
Note (*): All specifications are based on 40" frame height
Courtesy of Crane.Market